



SNOWPLOWS

Reversible Snowplows
One Way Snowplows
Expressway Snowplow
Snowplow Options



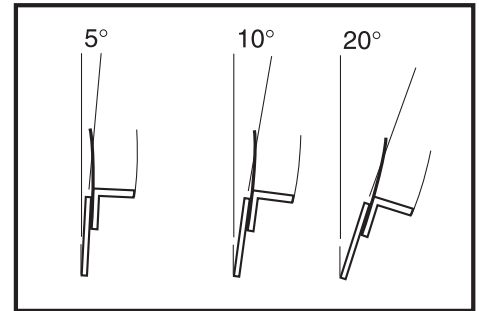
www.monroetruck.com

Other Product Offerings:
Wings • Hitches
Tailgate Spreaders
Liquid Systems • Scrapers
V-Box Spreaders

Full Trip Reversible

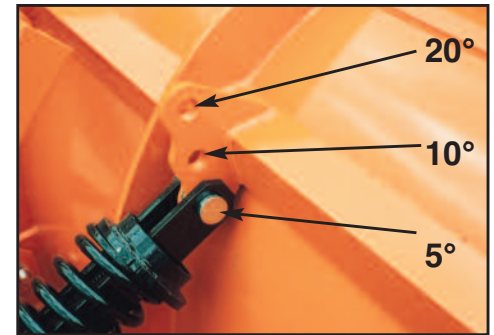


- Moldboard Thickness: 10 Gauge
- No. of 1/2" Vertical Ribs: 6
- Moldboard Reinforcing: (6) -1 piece, 1/2" Flame Cut Ribs
- Moldboard Top Angle: 2" x 3" x 3/8"
- Adjustable Moldboard Pitch Settings: 5°, 10°, 20°
 - Semi-Circle: 3 1/2" x 3 1/2" x 1/2" A36 Hot Rolled Angle
- Bottom Moldboard Angle: 3/4" x 4" x 4"
- Reversing Cylinders: (2) 3" x 10" Double Acting
- Reversing Limits (left & right): 35°
- Plow to Table Hinge Points: 4
- Cutting Edge: 5/8" x 8" Top Punched
- Pivot Pin: 1 1/4" Stopped
- Cylinder Pins: 1 1/4"
- Lift System: Built-In Level Lift



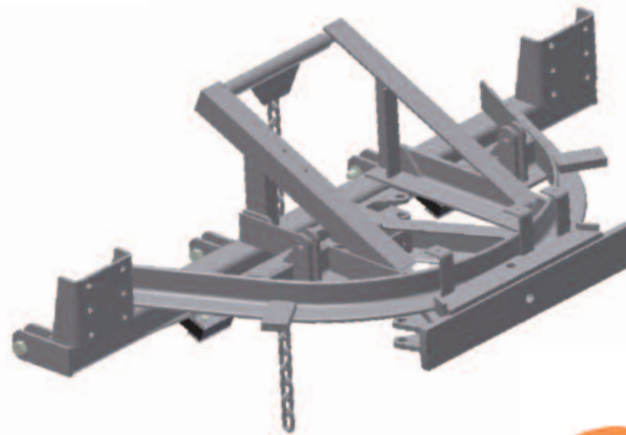
Force Required to Trip Moldboard

LIGHT TRIP **MEDIUM TRIP** **HARD TRIP**



Simple Three Position Adjustment for Plow Cutting Edge Attack Angle

Plow Model No.	Overall Length	Height w/ 5/8" x 8" Cutting Edge	Approx. Weight (lbs)
MP36R10-CT	10'	36"	1475
MP36R10-ISCT	10'	36"	1500
MP41R10-CT	10'	41"	1575
MP41R10-ISCT	10'	41"	1575
MP36R11-CT	11'	36"	1500
MP36R11-ISCT	11'	36"	1525
MP41R11-CT	11'	41"	1625
MP41R11-ISCT	11'	41"	1650
MP48R11-CT	11'	48"	1755
MP48R11-ISCT	11'	48"	1800
MP36R12-CT	12'	36"	1520
MP36R12-ISCT	12'	36"	1700
MP41R12-CT	12'	41"	1695
MP41R12-ISCT	12'	41"	1725
MP48R12-CT	12'	48"	1845
MP48R12-ISCT	12'	48"	2000



The Patented Level Lift allows plow to be parallel to the road surface at all times - raised, lowered, or angled.



Standard Moldboard vs Integral Shield Moldboard



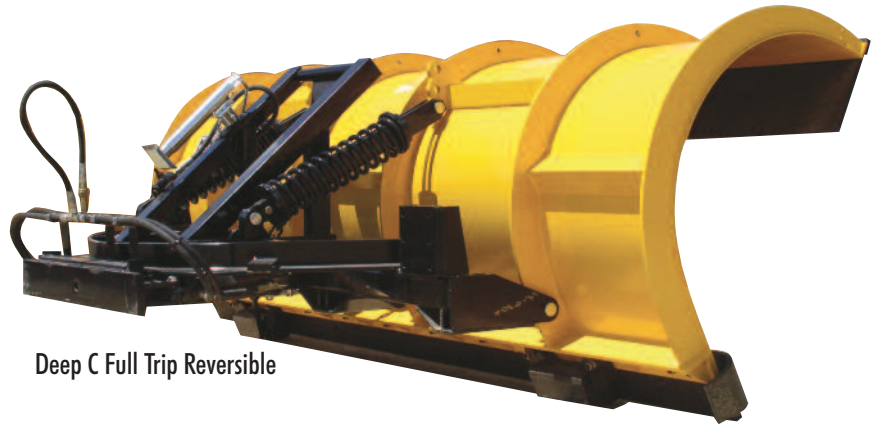
Q) When would I use a full trip reversible straight blade plow?

A) This plow is used for municipal, commercial, airport and off road plowing. Our most versatile, general purpose snowplow. Full trip is when the cutting edge hits an immovable object no higher than the center of the moldboard hinge pints and the whole moldboard moves forward until the cutting edge goes past center and slides over the object. The dual compression trip assemblies return the plow to plowing position once the obstacle is cleared.

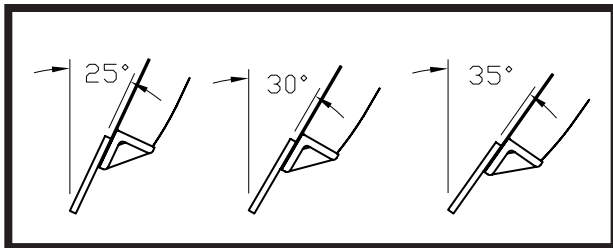
Deep C-Shaped Full Trip and Slotted Trip Moldboard

Q) Why would I need monroe's 45 degree attack angle plow?

A) This plow is typically for high speed rural use on paved roads. It handles heavy snow volumes better than most plows. However, because of the attach angle the plow will not clean hard pack as well as a cutting edge that is almost perpendicular to the road. You will be able to plow at higher speeds because the plow won't trip as easy because of the attach angle. Also, the deep moldboard curl helps prevent snow from blowing over the top of the plow back to your windshield.



Deep C Full Trip Reversible



Force Required to Trip Moldboard

LIGHT
TRIP

MEDIUM
TRIP

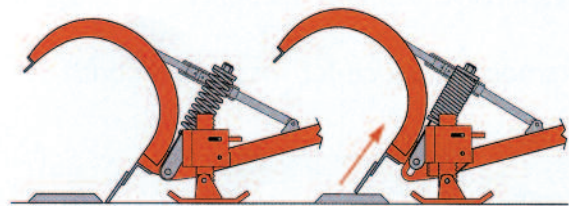
HARD
TRIP



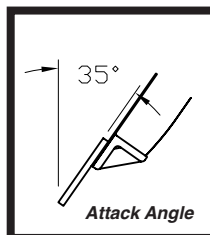
Deep C Slotted Trip Reversible

* Screw Adjustable Mushroom Shoes - Standard

* Dual Adjustable Telescopic Stabilizer Arms - Standard



Slotted Trip Moldboard shown tripping over obstacle.



Attack Angle

Q) Where is the best application for a slotted trip reversible plow?

A) This plow is used primarily in rural applications. Because of the attach angle, this plow is designed to pick up the snow and discharge it as higher speeds with less restriction. The slotted trip allows the moldboard to slide up into the slots, clear the obstruction and return to the plowing position. Recommended for paved or frozen roads, the plow tends to dig in on soft roads

- Moldboard Thickness: 10 Gauge
- No. of 1/2" Vertical Ribs: 6
- Moldboard Reinforcing: (6) -1 piece, 1/2" Flame Cut Ribs
- Moldboard Top Angle: 2" x 3" x 3/8"
- Adjustable Moldboard Pitch Settings: 25°, 30° & 35°
- Semi-Circle: 3 1/2" x 3 1/2" x 1/2" A36 Hot Rolled Angle
- Bottom Moldboard Angle: 3/4" x 4" x 4"
- Reversing Cylinders: (2) 3" x 10" Double Acting
- Reversing Limits (left & right): 35°
- Plow to Table Hinge Points: 4
- Cutting Edge: 5/8" x 8" Top Punched
- Pivot Pin: 1 1/4" Stopped
- Cylinder Pins: 1 1/4"

Lift System: 45" Built-In Level Lift; 55" Chain Lift Only

Plow Model No.	Overall Length	Height w/ 5/8" x 8" Cutting Edge	Approx. Weight (lbs)
MP45R11-ISCT	11'	45"	
MP45R11-ISST	11'	45"	2575
MP55R11-ISCT	11'	55"	
MP55R11-ISST	11'	55"	2680
MP45R12-ISCT	12'	45"	1755
MP45R12-ISST	12'	45"	2616
MP55R12-ISCT	12'	55"	2100
MP55R12-ISST	12'	55"	2724



Torsion Trip Edge



C-Style (6) Non-Adjustable 3/4" Square Torsion Spring Assemblies for a Bolt-On Trip Edge Assembly

Moldboard Thickness:	10 Gauge
No. of 1/2" Vertical Ribs:	6
Moldboard Reinforcing:	1 piece, 1/2" Flame Cut Ribs
Moldboard Top Angle:	2" x 3" x 3/8"
Adjustable Moldboard Pitch Settings:	0°, 5° & 10°
Semi-Circle:	3 1/2" x 3 1/2" x 1/2" A36 Hot Rolled Angle
Bottom Moldboard Angle:	3/4" x 4" x 4"
Reversing Cylinders:	(2) 3" x 10" Double Acting
Reversing Limits (left & right):	35°
Plow to Table Hinge Points:	4
Cutting Edge:	5/8" x 8" Top Punched
Pivot Pin:	1 1/4" Stopped
Cylinder Pins:	1 1/4"
Lift System:	Built-In Level Lift

Q) I have a lot of manhole covers and curbing in my city. Would the C-Style Torion Trip Edge Plow be good choice?

A) This plow is typically used in metropolitan areas on paved roads. This sectional trip allows you to pass over an immovable object without losing the snow load. Only the section hitting the immovable object will trip which would make it ideal in a city application. On the downside, if all sections trip at the same time the plow will jump when it resets to the plow position.

Plow Model No.	Overall Length	Height w/ 5/8" x 8" Cutting Edge	Approx. Weight (lbs)
MP39R10-TT	10'	39"	1900
MP39R10-ISTT	10'	39"	1950
MP44R10-TT	10'	44"	2020
MP44R10-ISTT	10'	44"	2080
MP39R11-TT	11'	39"	2000
MP39R11-ISTT	11'	39"	2080
MP44R11-TT	11'	44"	2100
MP44R11-ISTT	11'	44"	2160
MP51R11-TT	11'	51"	2195
MP51R11-ISTT	11'	51"	2255
MP39R12-TT	12'	39"	2060
MP39R12-ISTT	12'	39"	2110
MP44R12-TT	12'	44"	2180
MP44R12-ISTT	12'	44"	2240
MP51R12-TT	12'	51"	2310
MP51R12-ISTT	12'	51"	2400

J-Style Torsion Trip Edge

Moldboard Thickness:	3/8" Polymer
No. of 1/2" Vertical Ribs:	10
Moldboard Reinforcing:	1 piece, 1/2" Flame Cut Ribs
Moldboard Top Angle:	2" x 3" x 3/8"
Adjustable Moldboard Pitch Settings:	0°, 5°, 10° & 15°
Semi-Circle:	3 1/2" x 3 1/2" x 1/2" A36 Hot Rolled Angle
Bottom Moldboard Angle:	3/4" x 4" x 4"
Reversing Cylinders:	(2) 3" x 10" Double Acting
Reversing Limits (left & right):	35°
Plow to Table Hinge Points:	4
Cutting Edge:	5/8" x 8" Top Punched
Pivot Pin:	1 1/4" Stopped
Cylinder Pins:	1 1/4"
Lift System:	Built-In Level Lift



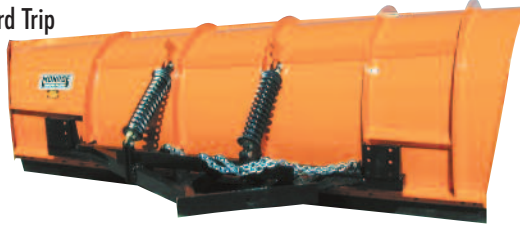
J-Style (6) Adjustable 3/4" Square Torsion Trip Spring Assemblies for a 1 Section Trip, 1-Piece Cutting Edge also features 4" x 4" x 3/8" Cross-Tube Support

Plow Model No.	Overall Length	Height w/ 5/8" x 8" Cutting Edge	Approx. Weight (lbs)	Moldboard
MPPJ39R10-ISTT	10'	39"	1860	Poly
MPJ39R10-ISTT	10'	39"	2460	Steel
MPPJ45R10-ISTT	10'	45"	1880	Poly
MPJ45R10-ISTT	10'	45"	2700	Steel
MPPJ39R11-ISTT	11'	39"	1925	Poly
MPJ39R11-ISTT	11'	39"	2550	Steel
MPPJ45R11-ISTT	11'	45"	1940	Poly
MPJ45R11-ISTT	11'	45"	2790	Steel
MPPJ39R12-ISTT	12'	39"	2140	Poly
MPJ39R12-ISTT	12'	39"	2640	Steel
MPPJ45R12-ISTT	12'	45"	1940	Poly
MPJ45R12-ISTT	12'	45"	2880	Steel

Q) How does the J-Style torsion trip edge plow compare to the C-Style torsion trip edge plow?

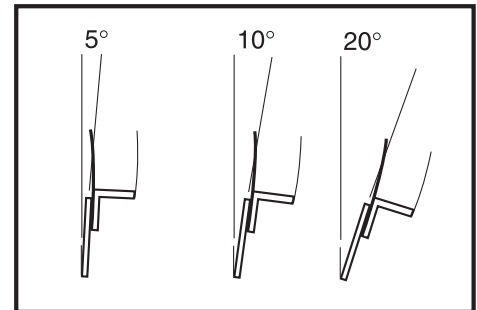
A) This plow is also typically used in metropolitan areas on paved roads. However, because the snow is discharged rapidly to the ground rather than casting it away, it helps prevent damage from thrown snow and avoids covering sidewalks and driveways. The bottom edge trips when hitting an immovable object and may tend to jump when it resets to the plowing position. Shoes are recommended. Spring tension is adjustable on the J-style plow whereas it is not adjustable on the C-style torsion trip edge.

Dual Compression Trip Spring Assemblies for Full Moldboard Trip



Plow Model No.	Overall Length	Height w/ 3/8" x 8" C.E. High End	Height w/ 3/8" x 8" C.E. Low End	Approx. Weight (lbs)
MPFA30-47-10	130"	46 1/2"	30"	1280
MPFA39-52-10	130"	51 1/2"	39"	1450
MPFA30-47-11	142"	47"	30"	1350
MPFA39-52-11	142"	52"	39"	1540
MPFA30-60-11	158"	60"	30"	1680
MPFA39-52-12	154"	52"	39"	1640
MPFA30-60-12	170"	60"	30"	1900
MPR30-47-10	130"	46 1/2"	30"	1580
MPR39-52-10	130"	51 1/2"	39"	1750
MPR30-47-11	142"	47"	30"	1650
MPR39-52-11	142"	52"	39"	1940
MPR30-60-11	158"	60"	30"	1980
MPR39-52-12	154"	52"	39"	2040
MPR30-60-12	170"	60"	30"	2200

Moldboard Thickness: 10 Gauge
 No. of 1/2" Vertical Ribs: 5
 Moldboard Reinforcing: 1 piece, 1/2" Flame Cut Ribs
 Moldboard Top Angle: 2" x 3" x 3/8"
 Adjustable Moldboard Pitch Settings: 5°, 10° & 20°
 Semi-Circle: 3 1/2" x 3 1/2" x 1/2" A36 Hot Rolled Angle
 Bottom Moldboard Angle: 3/4" x 4" x 4"
 Reversing Cylinders:
 Reversing Limits (left & right): 35°
 Plow to Table Hinge Points: 4
 Cutting Edge: 3/8" x 8" Top Punched
 Pivot Pin: 1 1/4" Stopped
 Cylinder Pins:
 Lift System: 2 Chain Lift



Force Required to Trip Moldboard

LIGHT TRIP **MEDIUM TRIP** **HARD TRIP**

Q) I plow a lot of rural highways. Is the one way full trip plow my best choice?

A) Used in both rural and metropolitan areas, the long, tapered moldboard allows the plow to lift and curl the snow which saves fuel and helps discharge the snow easier. This is a one-way plow, which means it's either tapered to discharge to the right or left. Can also be set up with a reversing table to permit cleanup at intersections. Because of the attack angle this will clean better and will not throw snow great distances. Most are manufactured to discharge to the right, but left discharge is an option.

MP311 & MP312

Moldboard Thickness: 10 Gauge
 No. of 1/2" Vertical Ribs: 5
 Moldboard Reinforcing: 1 piece, 1/2" Flame Cut Ribs
 Moldboard Top Angle: 2" x 3" x 3/8"
 Adjustable Moldboard Pitch Settings: 9 positions from 9° to 35°
 Bottom Moldboard Angle: 3/4" x 4" x 4"
 Reversing Cylinders:
 Reversing Limits (left & right): 35°
 Plow to Table Hinge Points: 4
 Cutting Edge: 3/8" x 8" Top Punched
 Pivot Pin: 1 1/4" Stopped



Q) When should I choose Monroe's MP311 or MP312 plow?

A) Used in rural areas and because of the attack angle and the deeper throat it will discharge large amounts of snow. The deeper the throat also helps prevent snow blowing over the top onto the truck's windshield.

Plow Model No.	Overall Length	Intake Height at 9°/35°	Discharge Height at 9°/35°	Approx. Weight (lbs)
MP311	144"	27.5"/27"	53"/56"	1450
MP312	156"	26"/26"	54"/57"	1785



One Way High Speed Slotted Trip

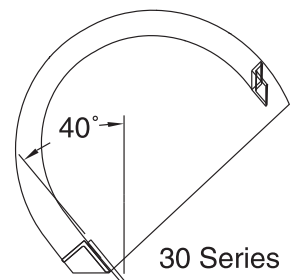
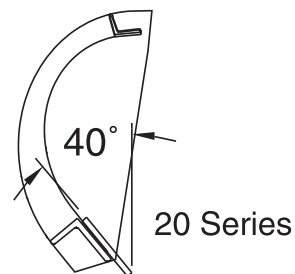
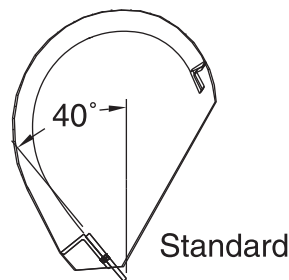


Moldboard Thickness:	10 Gauge
No. of 1/2" Vertical Ribs:	7
Moldboard Reinforcing:	1 piece, 1/2" Flame Cut Ribs
Moldboard Top Angle:	2" x 3" x 3/8"
Adjustable Moldboard Pitch Settings:	20° to 50°
Bottom Moldboard Angle:	4" x 6" x 1/2"
Reversing Limits (left & right):	37°
Plow to Table Hinge Points:	4
Cutting Edge:	5/8" x 8" Top Punched
Pivot Pin:	1 1/4" Stopped

Q) I plow long runs of open rural highways. Should I choose Monroe's high speed slotted trip one way?

A) This is a higher speed rural plow that will pick up the snow fast and discharge it fast. Designed for deep snow and high speed operation; minimum 15MPH. Higher speeds permit the snow to be cast away much further with this plow. The slotted trip assemblies protect the plow by allowing the cutting edge and moldboard to slide up in slots to clear an object, compressing the springs, then returning to the plowing position after clearing the obstruction. The pushframe has to be supported to make this work so skid shoes are standard. This is a very heavy, good cleaning snowplow.

Plow Model No.	Overall Length	Moldboard Height Nose	Cutting Edge Height Discharge	Approx. Weight (lbs)
MPHS26-54-11-ISST	13'10"	26"	54"	2250
MPHS35-64-11-ISST	14'4"	35"	64"	2410
MPHS45-72-11-ISST	14'4"	45"	72"	2450
MPHS26-56-12-ISST	14'9"	26"	56"	2310
MPHS35-66-12-ISST	15'10"	35"	66"	2470
MPHS45-72-12-ISST	15'10"	45"	72"	2525
MPHS25-67-11-OWIS	13'6"	25"	67"	2155
MPHS23-69-12-OWIS	14'7"	23"	69"	2263
MPHS36-62-11-OWIS	14'3"	36"	62"	2537
MPHS36-63-12-OWIS	15'4"	36"	63"	2625



Q) I have wide-open mountain roads. Is the full trip expressway reversible plow for me?

A) Primarily used in rural areas, mountain passes, expressways and Interstate highways, this plow is designed to discharge the snow farther to the right or left depending on the angle of the plow. It has a high discharge on each end allowing the snow to be cast farther out and higher than a straight blade reversible.



Full Trip Reversible

Plow Model No.	Overall Length	Moldboard Height Center	Moldboard Height Discharge End	Approx. Weight (lbs)
MPFT36-60-11-EXP	13'8"	36"	60"	1945
MPFT36-60-12-EXP	14'8"	36"	60"	2100

Moldboard Thickness:	10 Gauge
No. of 1/2" Vertical Ribs:	7
Moldboard Reinforcing:	1 piece, 1/2" Flame Cut Ribs
Moldboard Top Angle:	2" x 3" x 3/8"
Adjustable Moldboard Pitch Settings:	
Semi-Circle:	3 1/2" x 3 1/2" x 1/2"
Bottom Moldboard Angle:	4" x 4" x 3/4"
Reversing Cylinders:	(2) 3" x 10" Double Acting Cylinders
Reversing Limits (left & right):	37°
Plow to Table Hinge Points:	4
Cutting Edge:	5/8" x 8" Top Punched
Pivot Pin:	1 1/4" Stopped
Cylinder Pins:	
Lift System:	Built-In Level Lift

Expressway Slotted Trip

Moldboard Thickness:	10 Gauge
No. of 1/2" Vertical Ribs:	7
Moldboard Reinforcing:	1 piece, 1/2" Flame Cut Ribs
Moldboard Top Angle:	2" x 3" x 3/8"
Adjustable Moldboard Pitch Settings:	
Semi-Circle:	3 1/2" x 3 1/2" x 1/2"
Bottom Moldboard Angle:	4" x 4" x 3/4"
Reversing Cylinders:	(2) 3" x 10" Double Acting Cylinders
Reversing Limits (left & right):	37°
Plow to Table Hinge Points:	4
Cutting Edge:	5/8" x 8" Top Punched
Pivot Pin:	1 1/4" Stopped
Cylinder Pins:	
Lift System:	Built-In Level Lift

Plow Model No.	Overall Length	Moldboard Height Center	Moldboard Height Discharge End	Approx. Weight (lbs)
MPH40-58-11-EXP	13'3"	40"	58"	2400
MPH48-66-11-EXP	14'3"	48"	66"	2500
MPH40-58-12-EXP	14'3"	40"	58"	2600
MPH48-66-12-EXP	15'4"	48"	66"	2750

Q) When should I choose the slotted trip expressway reversible?

A) This is considered a higher speed plow because of the tapered design, attack angle and slotted trip. It will pick up snow and discharge it faster and farther. The plow is used primarily in rural areas, mountain passes, expressways and Interstate highways.

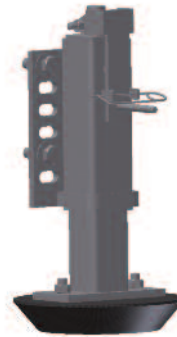
Shoes



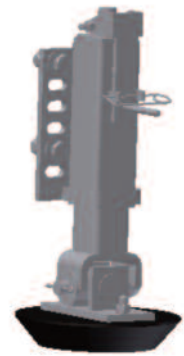
PN: 00052867 Skid Shoe w/ Jack Kit Pair
 PN: 00051200 Jack Assembly
 PN: 00098355 Skid Shoe Assembly



PN: 00061207 Carbide Skid Shoe w/ Jack Kit (Pair)
 PN: 00051200 Jack Assembly
 PN: 05050005 Carbide Skid Shoe



PN: 00012692 Mushroom Shoe w/ Jack Kit (Pair)
 PN: 00051035 Jack Assembly
 PN: 05051009 Mushroom Shoe



PN: 00029615 Mushroom Show w/ Jack Kit (Pair)
 PN: 00041967 Jack Assembly
 PN: 05051009 Mushroom Shoe Assembly



PN: 00061209 Oscillating Mushroom Shoe w/ Jack Kit (Pair)
 PN: 00054906 Jack Assembly
 PN: 05052870 Mushroom Shoe Assembly



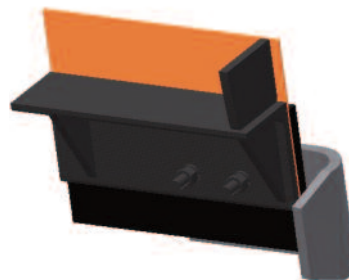
PN: 00057967 Caster Wheel w/ Jack Kit (Pair)
 PN: 00051200 Jack Assembly
 PN: 00011653 Wheel Assembly



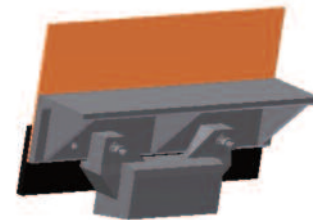
Removable Parking Jack Kit
 PN: 00061212



Half Moon Curb Guard Kit
 PN: 00061213



Wrap Around Curb Guard
 PN: 00039621



Moldboard Shoe Kit
 PN: 00061797

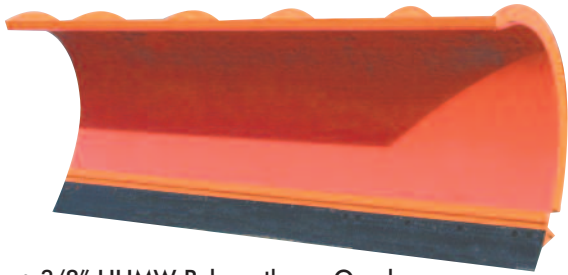


PN: 00106637 Pneumatic Wheels w/ Jack Kit
Foam Filled Option PN: 00106638
 PN: 00106639 Jack Assembly
 PN: 00011654 Pneumatic Wheel Assembly



PN: 00017257 Snow Wheel Kit
 PN: 05050762 Adjustable Swivel Snow Wheel

Polymer Over Steel



- 3/8" UHMW Polyurethane Overlay

Mailbox Trim with Rubber Snow Deflector



- Provides Optimal Mailbox Obstacle Clearance

Mouse Ear



- Improves Snow Casting Ability - Available on Right Side, Left Side or Dual Ears



Air Foil



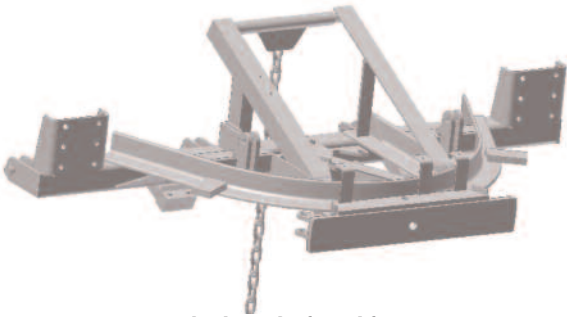
- Prevents Most of the Light Snow from Blowing Over the Top of the Moldboard onto the Driver's Windshield

Flexible Plastic Markers

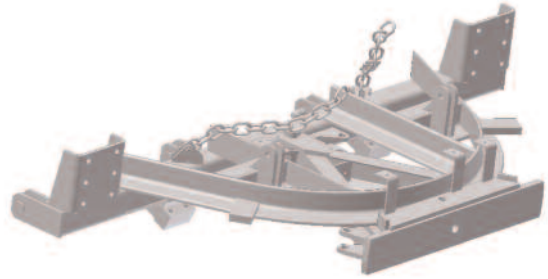


- 42" Flexible Cable Markers

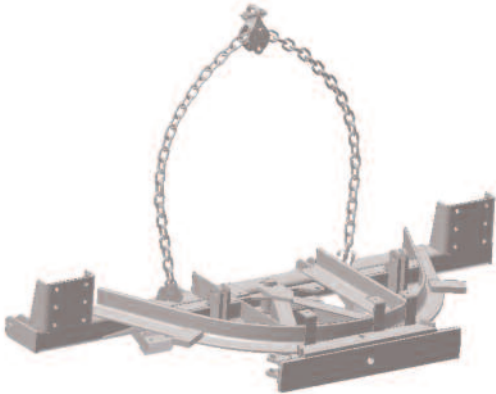
Pushframes



Standard Level Lift Pushframe Kit
PN: 00092344



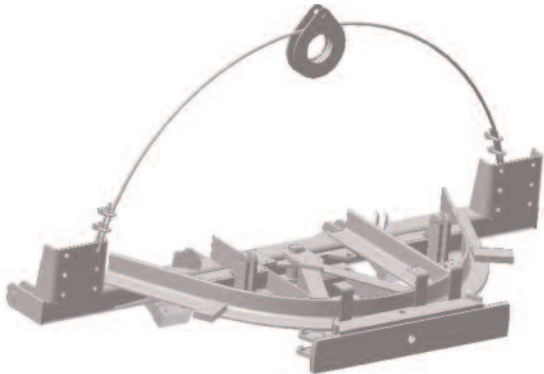
2-Chain Lift Pushframe Kit
PN: 00055940



Single Chain Lift Pushframe Kit
PN: 00130012



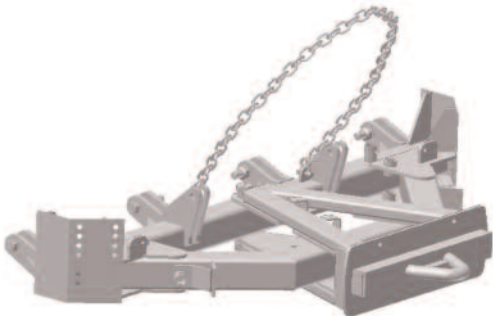
Continuous Chain with Sliding Block Level Lift Pushframe Kit
PN: 00055941



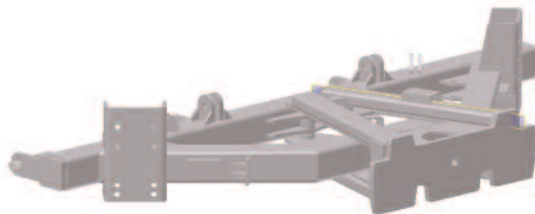
Cable Level Lift Pushframe Kit
PN: 00055942



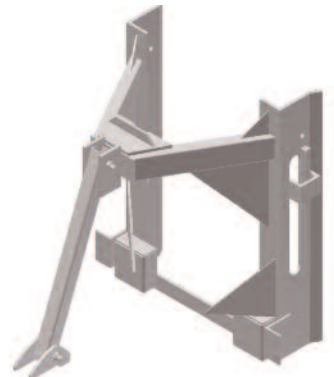
Y-Chain Lift Pushframe Kit
PN: 00099320



Heavy Duty 5" Tubular Pushframe Kit
PN: 00145827

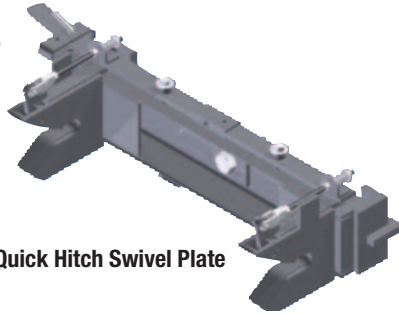


Pushframe Kit, Rvs, TT, 10'-12'
PN: 00126033



Husting Lift
PN: 00069488

Quick Type Hitch

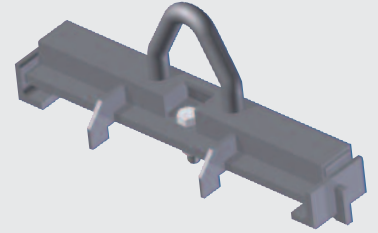


MC6000 Quick Hitch Swivel Plate

Loop Type Hitch



QCP Loop Weld On Style

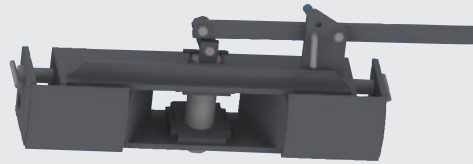


QCP Loop Weld On Style Swivel Plate

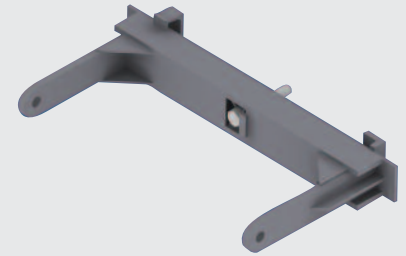
Pin Type Hitch



Pin Style Swivel Hitch Also Available in 21", 30.5" and 33.5" Center



MC801 Field Conversion Kit to Convert Pin Style to Loop Style Hitch



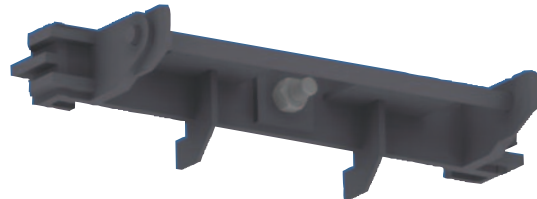
Pin Hitch for 26B Style Hitch

Husting Hitch



Husting Hitch Plow Portion

Quick Link Hitch



Quick Link Swivel Plate Hitch

Tor-Lock/Arrowhead Hitch

Weld On Plow Portion without Swivel Plate



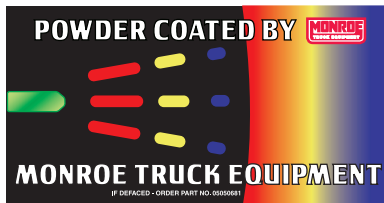
MC6000 Quick Hitch Swivel Plate

Monroe Snow & Ice

- Distribution Through The United States and Canada
- Manufactured in Monroe, WI, USA
- Installation Facilities in
DePere, WI; Marshfield, WI; Joliet, IL; Flint, MI; Louisville, KY



Powder Coat Finish



- The ability to withstand high levels of corrosion protection to salt, chemicals, humidity, scratching and impact, far surpassing conventional paint top coats
- Resists fading from U.V. rays
- Environmentally green process
- Excellent adhesion
- High degree of scuff, chip or scratch resistance

"We use our trucks and equipment in a high chemical and high abrasive environment. Powder coating is the best route for several reasons. The main reason for us is the appearance because we like to have the image of always having superior and functional equipment. For this reason a powder coat finish is the best option for us on our salt spreaders. We also have had great results from the powder coat finish on our Snow Bully Snow Pushers. We own over 20 of them and we have never had to repaint a single one. Some of the v-boxes we have are 10 years old and have had heavy usage. They also have never been repainted. Only minor touch ups due to either driver or loader error. We will never use any type of equipment that does not have a powder coat finish. That is one of the reasons we use Monroe Snow & Ice Control Products exclusively!"

- Trevor Biebrach, Director of Operations, Snow Systems Incorporated



- Environmentally SAFE Process
- Emits NO VOC's
- Contains NO Heavy Metals
- NO Solvents Disposal

**MTE Achieving
Exceptional Quality Finishes,
Our Customers Demand**



MTE's Engineering Research & Development Team

- 6 Design Engineers and 4 Designer Draftsmen
- Design Software: AutoCad, Inventory, Design Space
Finite Element Analysis Software for Stress Analysis
- Dedicated R&D Area and Technicians

Distributed By:

Manufactured By:

Monroe Snow & Ice Control

A Division of Monroe Truck Equipment

1051 W. 7th Street, Monroe, WI 53566

PH: 800-880-0109 • FX: 608-328-8390

www.monroetruck.com

