



FACILITIES & ACTIVITIES GUIDE

RETREATS - CONFERENCES
WEDDINGS - REUNIONS
SUMMER CAMPS
AND MORE

**In
This
Place...**

**We
Welcome
All...**

**Who Seek
Some
Peace...**

**Among
These
Trees.**

WELCOME TO SKYLINE

Since 1964, Skyline Camp and Retreat Center has been a setting for summer camps, retreats, weddings, reunions and more.

With 156 acres of rolling hills, woods, fields, and water, Skyline boasts the highest point in Lapeer County.

Skyline takes pride in its place, people and programs, and looks forward to welcoming you here.

This brochure is a very quick introduction to Skyline, and we invite you to contact us by phone or email anytime. We'd be delighted to show you around so you can see firsthand all that Skyline has to offer.



FOOD SERVICE

Skyline's kitchen staff will keep you well fed.

The Dining Hall can accommodate about 100 people in any season, and many more in the warmer months when the decks can be used.

Served buffet-style with plenty of options, Skyline's food is always highly praised by our guests. We are accustomed to working with special diets and allergies, and our kitchen leaders are ServSafe certified.

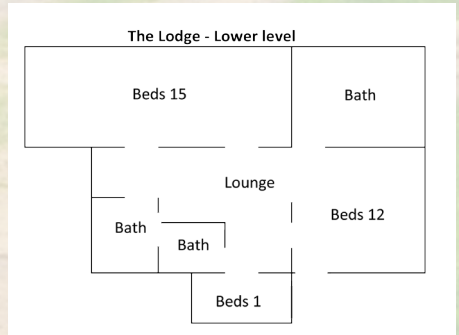
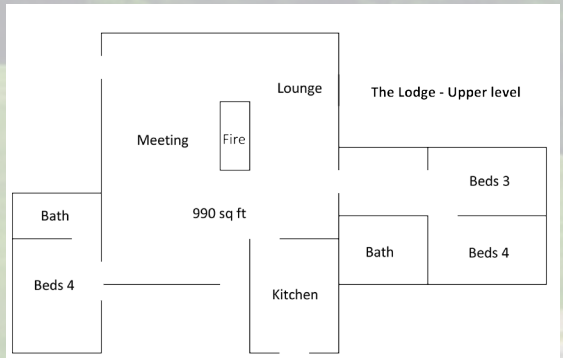
Sample menus are available upon request, and online.



THE LODGE

The main residence for what once was a country estate, The Lodge is at the top of the hill near Focus Hall and the Dining Hall.

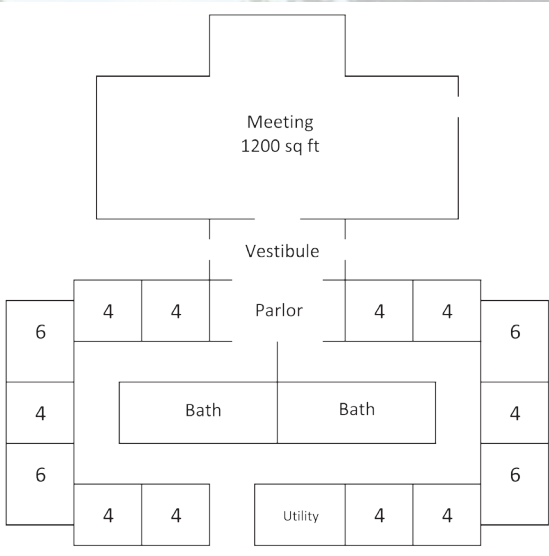
Fully winterized, it sleeps up to 39 people in a combination of semi-private and dormitory-style rooms. A full kitchen and flexible gathering areas around a central fireplace make The Lodge both charming and practical.



FOCUS HALL

Focus Hall overlooks Skyline from the county's highest point. This contemporary retreat center has excellent views and is in close proximity to the Dining Hall.

Focus Hall sleeps up to 64 individuals in 14 rooms, and is served by two large centralized bathrooms. A kitchen, parlor, vestibule and 1200 square feet meeting space offer flexibility for many purposes.



WEDDINGS



Skyline hosts weddings year after year, and no two weddings are the same. For everything from a few hours to a weekend-long extravaganza, Skyline has the space to let your own imagination flourish.



RUSTIC CABINS

Skyline's woods conceal 11 cabins each sleeping between 9 and 12 people in comfort and simplicity. Served by a nearby bath house, these cabins are open May through October.



SKYLINE ACTIVITIES

At Skyline there are opportunities to be as restful or as active as you choose, limited only by your imagination.

We can help you with ideas and let you know the kinds of resources we have available to share.

With 156 acres of woods, fields, hills and water, there really are countless ways to spend your days at Skyline.

For example:

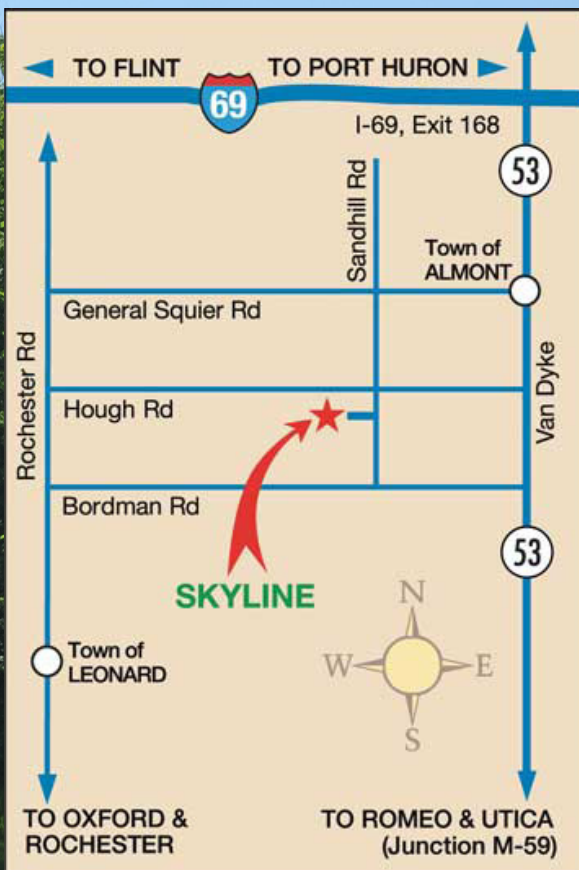
On your own...

Hiking
Fishing
Sledding
Tennis
Volleyball
Basketball
Soccer
Ping Pong
Campfires

With our help...

Swimming
Canoeing/Boating
Farm animal visits
Archery
Team building
Slingshots
Hayrides
Drum Circles
Guided night hikes

...and more!



Skyline Camp & Retreat Center

5650 Sandhill Road,
Almont MI 48003
Phone 810-798-8240
Fax 810-798-3680

Reservations:

248-644-2043

office@campskyline.org

www.campskyline.org



Skyline is licensed by the State of Michigan, Accredited by the American Camp Association, & is a 501(c)(3) non-profit organization.