

# Hazard, Risk Identification and Communication

## The Problem/Challenge

In accordance with the CDM Regulations it is preferred to include all significant risk analysis on **drawings rather than on written or numerical Design Hazard and Risk Assessment documents**. This is to encourage visual analysis and recording of significant construction, maintenance, and demolition issues without unnecessary bureaucracy.

## The Risks

**Significant hazards and risks can be hidden** in the bureaucracy of a project causing them to be overlooked during design, pricing, construction and maintenance stages of a project.

## The Solution

**Project drawings to be annotated** in simple graphic manner with key to further detail or references if required. More complex projects may need special CDM drawings. Hand annotation for design stage issues can suffice.

## The Benefits

**All relevant risk information is collated in one place** with all the associated complexity visually apparent to all participants in the risk reduction process.

## Key Points

Designer friendly technique ensures all significant and unusual or specific hidden issues are not missed even during design changes.

**Important not to confuse drawings with “trivial”, “obvious” or “routine” risk information** which a competent contractor is expected to understand or be aware of.

## Hazard Assessment Guidance

Project Name: Add Project Name

### HAZARD CATEGORIES

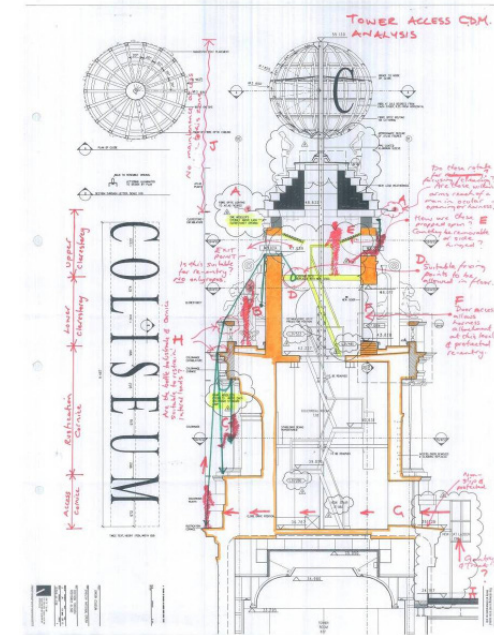
1. Collapse or instability of structure/components
2. Collapse from adjacent excavations
3. Falls from working at height
4. Working close to workplace transport
5. Asbestos removal/disturbance
6. Working in confined spaces
7. Working near/over water
8. Working with lifting services
9. Excessive manual handling
10. Working in a noisy environment
11. Whole/partial body vibration
12. Working with/next to unstable materials/surfaces
13. Working with/exposure to hazardous substances/materials
14. Other – describe in detail

LIKELIHOOD	SEVERITY		
	L	M	H
L	1	2	3
M	2	3	4
H	3	4	5

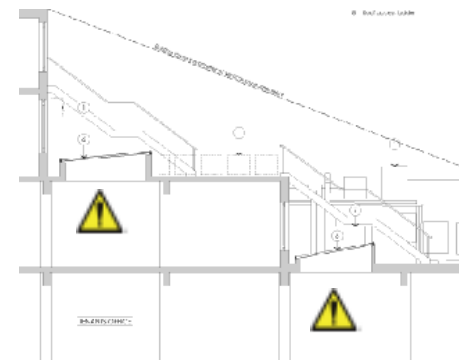
Likelihood of harm occurring  
 L: Very seldom/rare  
 M: Reasonably likely  
 H: Certain/near certain

Severity of harm caused  
 L: Minor injury/illness  
 M: Short term injury/disability  
 H: Fatality, major injury or illness

Risks should be avoided or reduced to the lowest acceptable level.  
 Risks with a high likelihood should be designed out.

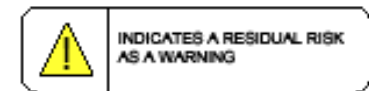


Hazard and risk analysis sketched and hand annotated



Simple symbols used on survey and construction drawings

### KEY



Keys in margin to amplify if required