

Tender / Contract Stage Design - Temporary Fall Protection Issues

The Problem/Challenge

To alert the contractor's temporary works designers to unprotected slab and roof edges where the designer could insert temporary protection works aides instead of a traditional perimeter scaffolding system.

The Risks

Falls from height during construction rather than during future maintenance.

The Solution

Designers to highlight typical roof edges and slab edges which need to be considered by contractors whilst pricing for temporary works. Project drawings can be used for site risk identification to all contracting staff irrespective of language and ability to understand drawings.

The Benefits

Enables contractor to identify key safety issues that he needs to respond to by traditional methods eg. full scaffolding. Or by means of proprietary edge guarding methods to which designers can contribute eg. sockets in slabs, fixing points in steel, etc.

Key Points

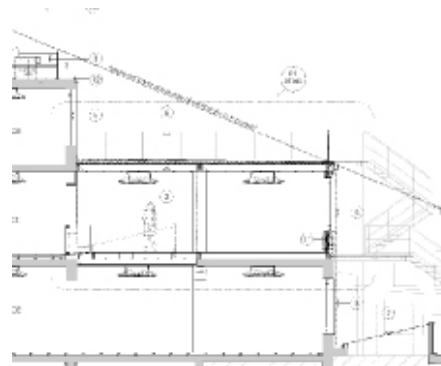
Avoidance of unnecessary bureaucracy and utilisation of contractor's advice at the appropriate stage of the project.



Holes in steel for net guards



Sockets in slabs for edge panels



Areas requiring edge guarding simply indicated on drawings



Other methods of fall protection eg. Air bags