

# Crash Mat Over Station Roof, Cannon Place - Designer Guidance

## The Problem/Challenge

Protection of public and workers using the station during demolition and construction works of offices above.

## The Risks

Materials accidentally dropped and puncturing the existing retained concrete slab deck.

## The Solution

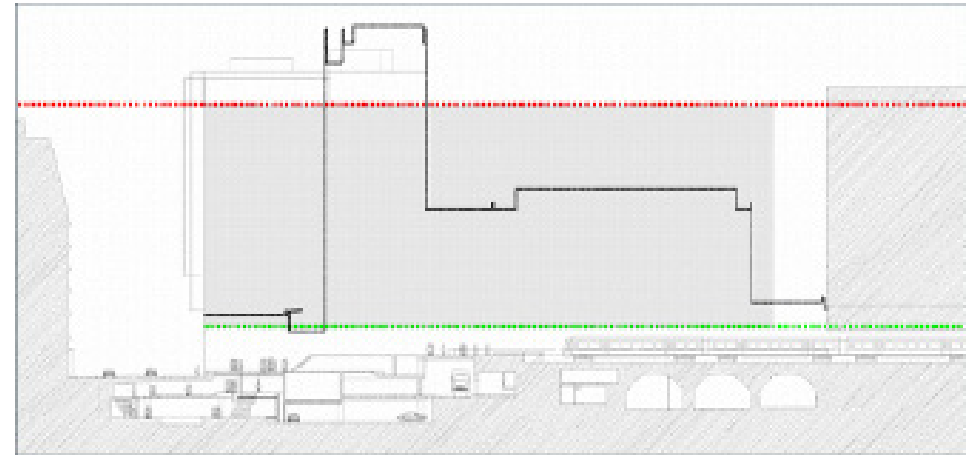
Two layers of 300mm plywood, on a 150mm RC slab, designed to withstand a 3 Ton column falling 40 metres end on.

## The Benefits

Cost effective temporary protection.

## Key Points

Heavy lifting installation and removal of plywood by tower crane.  
Method of demolition to respect this level of overhead protection.



Foggo Associates with Laing O'Rourke