

Access to Tower Lighting - Coliseum

The Problem/Challenge

Existing historic freestanding light fittings to be refurbished and replace those missing. These are located on unguarded parapets to the tower and façade. The light fittings vary between 2.5m and 3.5m and cannot be safely reached unaided.

The Risks

Falls from unguarded parapets during lighting maintenance access.

The Solution

Powered access equipment, and scaffolding were discounted after careful assessment as unsuitable.

A rope access system, allowing safe work positioning and fall restraint, agreed after detailed client, design team negotiations and specialist consultations.

Rope attachment anchors were built into the structural steel and terracotta cladding by design team integration.

Long life lamps were chosen to also minimise the frequency of access.

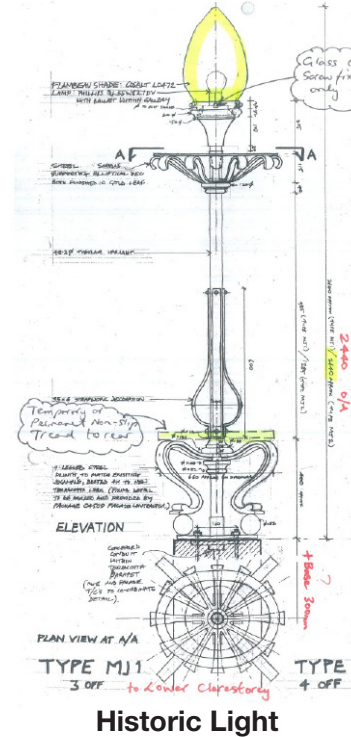
The Benefits

Provides safe and economic lamp replacement at short notice using “Working at Height” trained theatre maintenance staff.

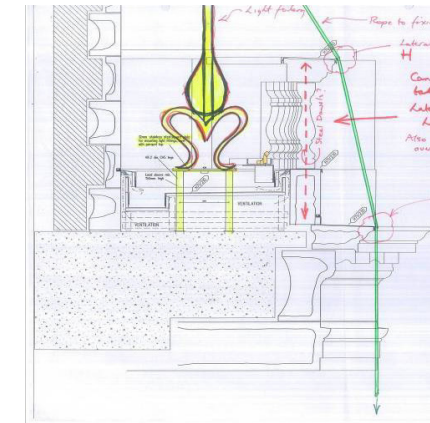
Key Points

Lighting design drawings were annotated to communicate the risks and solutions to entire team.

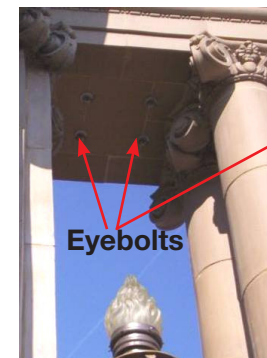
The annotated drawings were used by the construction team as the basis of the construction details.



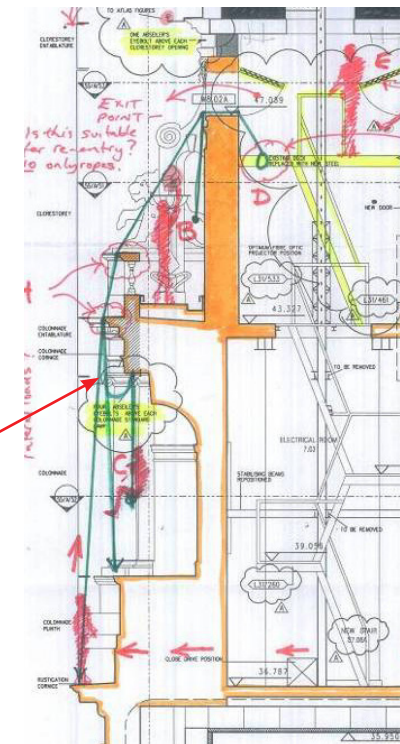
Historic Light



Parapet detail



Eyebolts installed



CDM analysis