

Riser ducts - Fall protection/ Construction and Maintenance

The Problem/Challenge

Maintaining the safety of floor openings before installation of service risers. The programme usually requires the installation of services after the riser holes formed.

The Risks

This can lead to openings in the floor that the contractor has to manage, creating a potential fall risk or trip hazard.

The Solution

Alert the contractor to the riser duct holes at tender on drawings. By keeping risers adjacent to walls they can be easier to protect. Co-ordination between M & E designers and structural designers can enable the size of riser openings to be reduced. Sleeves or ducts can be cast in ready for services. Alternatively, it may be possible to cast mesh into the floor. The contractor to agree the preferred solution with the health and safety subcontractor.

The Benefits

Significantly reduce the reliance on scaffolding or coverings that can be easily moved. Reduce the likelihood of accidents on site.

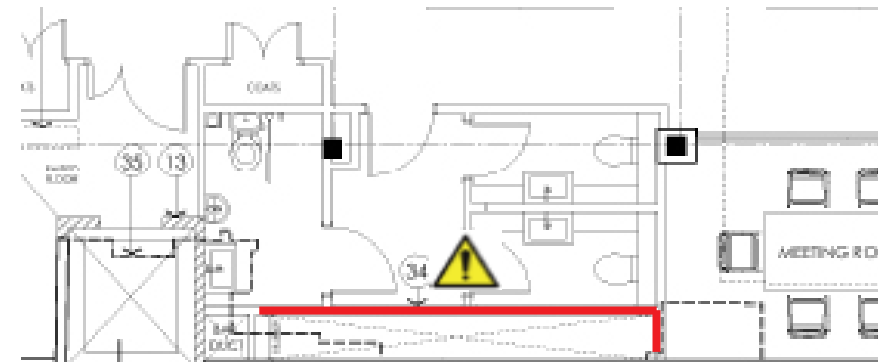
Key Points

Talk to other designers, involve M & E designers as early as possible to minimize risks and size of riser openings.

Consider casting in sleeves or mesh to eliminate fall risks.

Consider pre-assembly of services, reducing work at height.

This is a “competent contractor” issue to manage but the design team can assist to prevent accidents by alerting the contractors as early as possible in tendering process.



Large duct at party wall, fall risk highlighted



1. Sleeved services



2. Large metal mesh



3. Small metal mesh prevents falls in open areas

