

Precast concrete units - 'Turning Plate'

Although generally robust, the corners of precast concrete units are vulnerable to damage, particularly when lifting. In order to avoid damage on site, Morgan Sindall's Engineering Services Team developed a technique which enables precast units to be lifted without causing damage to the vulnerable nibs.

This was achieved by bolting a removable turning plate (pre-fabricated steel) onto the parapet unit before lifting. The turning plate is quickly and easily removed once the unit is vertical. Previously any damage to the nibs would have necessitated either the re-ordering of replacement units, resulting in additional costs and delays or insitu repair at height.

This technique can be replicated to suit a variety of different shapes and sizes of precast units.

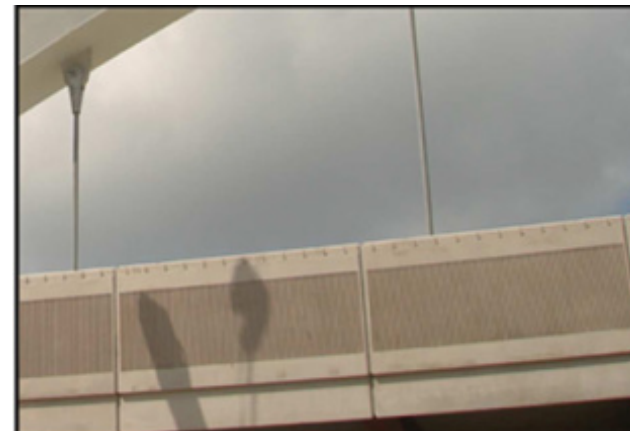
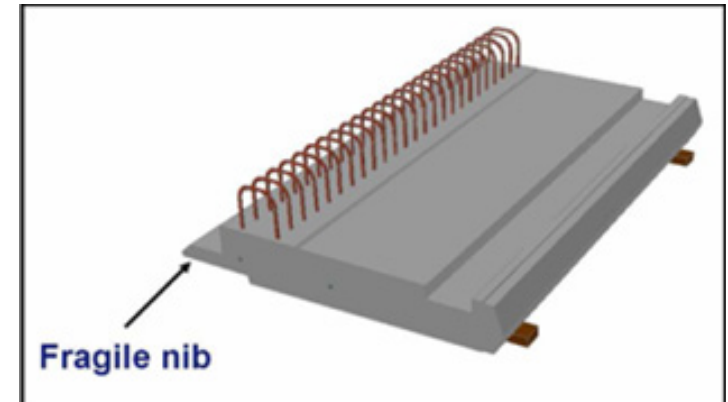
Key Points

1. Avoids damaging fragile nibs or precast units.
2. Reduces cost and time of replacing damaged units.
3. Removable and reusable turning plates.
4. Transferrable to a range of vulnerable elements that require lifting.



Temporary turning plates fitted to a precast panel.

View of a typical precast panel.



Finished panels erected.