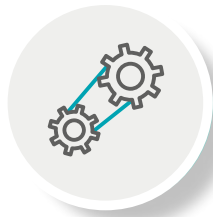
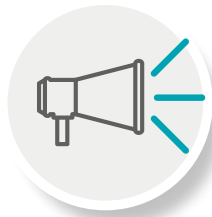


Insights Discovery is a **world leading diagnostic tool**, built to help you really understand yourself and others, and how best to connect with people to **create a productive team environment** where everyone communicates effectively. It shows you how to appreciate each other's strengths and weaknesses to enable better collaboration and **have a positive difference** in everything you do.

The tool is designed for anyone who:



Needs to understand the impact of their personal style



Wants to have effective relationships with their colleagues



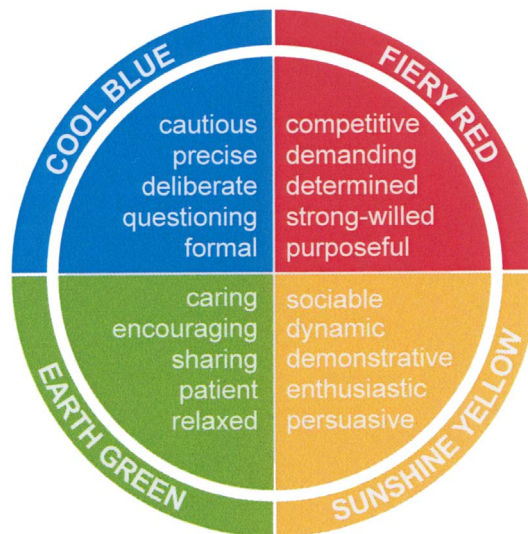
Hopes to achieve success through building strong partnerships



Is striving to improve communications and minimise conflict

When this tool is used throughout an entire organisation, it allows for **everyone to share a common language**, making it much **easier to communicate**. Work relationships become vehicles for business success and jobs get completed efficiently and successfully.

This tool uses a simple and memorable four colour model to help people understand why we behave the way we do. We call these the **colour energies**.



We each have a **unique mix of the 4 colour energies**, and in each person, **one tends to dominate**. Using this language of colour can help people **build a rapport, adapt their style, strengthen their relationships** and **recognise the value** they bring to a team.

Using the profiles as a springboard, **our insights practitioner will work with your people, teams and leaders** to tackle the challenges that are standing between them and peak performance, such as **effective communication, management styles, sales performance** and finding an environment that **inspires them to do their best work**.

Using Insights to improve your business can be a very **powerful tool**. When communication is consistently clear and respectful, when managers know how to motivate their people, when sales people beat their targets by understanding how to relate to their customers, and when everyone on the team is working towards the same goals, you'll realise the **measurable impact** that investing in people development can bring.