

Investing in Community

**London Community Foundation**  
**2014 Annual Report**



LONDON  
COMMUNITY  
FOUNDATION



# About London Community Foundation

London Community Foundation is a charitable organization that is dedicated to improving communities across London and Middlesex County. Our goal is to continue building London as a *Smart & Caring Community* through collaboration, strategic leadership and innovative solutions to charitable giving. To us, “Smart” means understanding the needs of the community and using our knowledge and expertise to tackle the tough issues. “Caring” is the passion that motivates us to act on our knowledge, facilitating community change and creating equal opportunities for all citizens.

## Our Mission

Through the power of giving, we create a vibrant and caring community by investing strategically in innovative community-based solutions.

## Our Vision

A community working together so that each member has the opportunity for an enriched quality of life.

## Our Goals

As strategic leaders, we hope to build on our partnerships, convening successes and knowledge of community issues to drive change and solutions in our community.

Inspiring innovative solutions through the power of giving will lead us to pursue and enhance our ability to engage existing and new philanthropists by offering new ways to give and provide exemplary donor stewardship and service.



SMART & CARING  
COMMUNITIES



COMMUNITY  
FOUNDATIONS  
OF CANADA





# A Message from President & CEO, Martha Powell

Community leadership has always been a priority for London Community Foundation. Through the power of endowment we are committed to building long-term community capacity. Three years ago we changed our strategic direction to focus on high impact, strategic grants that will move the needle on our community's most pressing issues. As we continue to evolve and magnify our impact on the community, I am excited to announce our most visionary project yet: **Back to the River**.

After much consideration, the Foundation determined it was time to add a fourth Pillar to our strategic plan: community mobilization. Still keeping with our vision, we have certainly not moved away from existing priorities such as community leadership, high impact granting, social finance and advocacy. However, I believe that citizens are truly the ones who make their communities. We want the people of London and Middlesex region to give back to the community that gives so much to them. The Foundation saw an on opportunity to take community engagement to the next level; that opportunity is the Thames River.

I believe The Thames River is the heart of London: past, present and future. As the Foundation embarks on its new strategic plan, I am honoured to take our community back to its roots with **Back to the River**.

London Community Foundation has a role to catalyze community change. As the Foundation revisited its strategic plan in 2014 we identified an opportunity to mobilize citizens and enhance civic engagement.

**Back to the River** will be the catalyst that unites our community around a common cause. Enhancing quality of life, environmental and economic development, this project has the potential to bring great changes

to London. A heritage river that is bound to our region's identity, I believe this project will have a transformative impact on our community.

After exploring the impact of river revitalization projects in other communities, I know the results are nothing short of extraordinary. Even in its very early stages, I am overwhelmed by the excitement, engagement, community pride and passion that has transpired as a result of this project. A sense of belonging, a sense of place, a sense of pride; this is what community is all about.

The ability of the Foundation to take on a project of such magnitude is an illustration of the power of endowment. Thanks to the continued support of caring Londoners like you, we are making bold changes in our community.

I challenge you to get involved. This is your London; your opportunity to make a change. I believe in London and I know this project has the power to bring new life to our community.

# A Message from Vijay Venkatesan, Director of Finance & Administration



## 2014 Investment Returns: Year in Review

Despite the low interest environment and its impact on the fixed income markets, the continued strength experienced during 2014 in both the domestic and international markets has contributed to London Community Foundation's goal of growing our assets and advancing our mission.

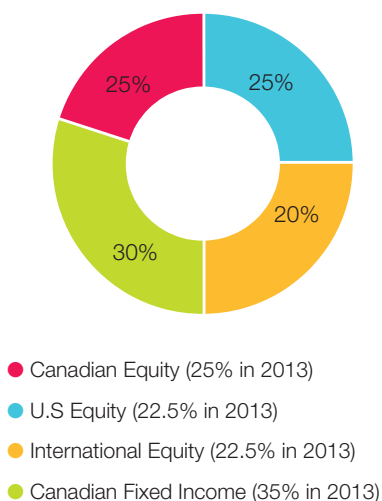
London Community Foundation ("LCF"), through its Investment Committee, has been diligently managing between \$60 million to \$65 million of assets during 2014 to ensure stable and consistent community impact in 2014 and beyond. In keeping with our commitment to financial accountability and transparency, full audited financial statements are available on our website at [www.lcf.on.ca](http://www.lcf.on.ca) or by mail.

2014 was another good year for our Endowment fund. Our commitment to balancing between our capital preservation mandate and investment growth in our portfolio saw continued success in managing our volatility and

risk during the year. The U.S economy continued its recovery through a stronger consumer, highlighted by decreased unemployment levels and improving housing markets. Domestic and international equities also increased albeit higher volatility experienced with a stronger US dollar relative to other currencies, dramatic decline in oil prices, and several countries in the EU experiencing high levels of debt.

The Investment Committee made some shifts in asset allocation in 2014 and remains committed to the following mix.

Current Asset Mix



London Community Foundation is a long-term investor and believes the asset mix, combined with value added performance from our investment managers, ensures we can continue to impact our community in a positive and meaningful way.

The following is a review of our performance by asset class during 2014.

#### Canadian Fixed Income:

The Canadian fixed income market as measured by the FTSE TMX Short Term Bond Index produced a return of 3.1% in 2014, while the Foundation's Canadian fixed income portfolio delivered 3.3% for the year. LCF is invested in an actively managed bond index. Most of the outperformance can be explained by the funds' overweight in corporate bonds which outperformed the overall short term bond market.

#### Canadian Equity:

During 2014, the Canadian equity portfolio provided a return of 7.7%, compared to the benchmark of 10.6%. Detracting from the performance compared to the benchmark was the investment manager's commitment to value investing, which kept it out of several expensively valued companies that over performed during the year.

#### U.S. Equity:

The U.S equity market as measured by the S&P 500 Index produced a return of 13.6% in 2014. LCF is invested in a passively managed U.S equity index which closely tracks the S&P 500.

#### International Equity:

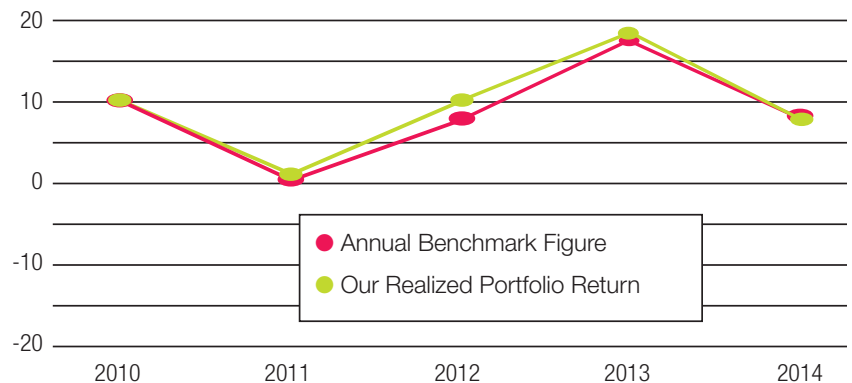
The Foundation's international equity performance resulted in a return of 3.9% vs. the benchmark of 3.7% during 2014. The portfolio commitment has been capital preservation and yield enhancement that tend to exhibit stable earnings and results.



# 5-year review

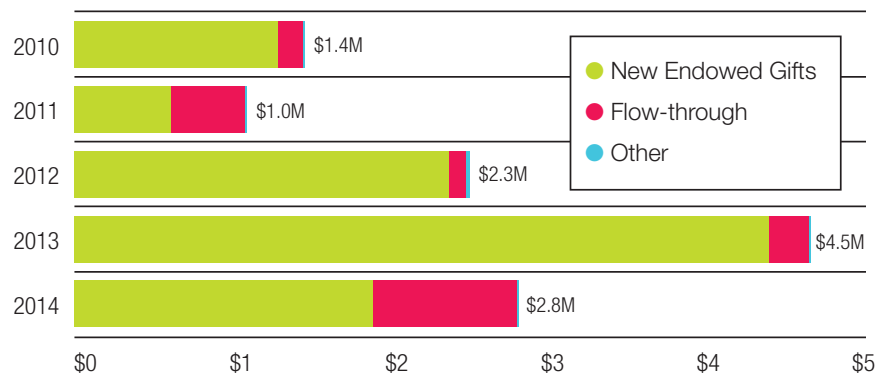
## Investment Returns (2010-2014)

The Foundation's financial stewardship strategy looks at a long term horizon to ensure legacies created by donors are respected and grant-making will continue in perpetuity. The 2014 return is 6.8%.



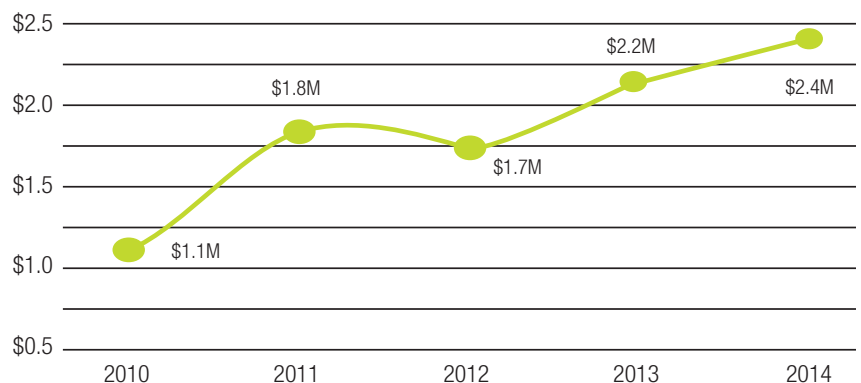
## Total Contributions

In 2014, the Foundation received \$2.8M in new gifts (2013 \$4.5M). 11 new funds were established (2013: 10); the threshold for establishing a named fund begins at \$5,000 and varies with fund type.



## Granting Activity

Total disbursements for charitable causes were \$2.4M (2013: \$2.2M). 409 grants supported 162 charitable organizations (2013: 352 supported 151).





## Our Granting

### **How WE are Driving Change**

It is people like you, our donors who make this impact possible.  
You are the catalyst of change and the anchors of our community.

We thank you for your support and dedication.

# How WE are Driving Change

London Community Foundation strives to strengthen the vitality of London and Middlesex region.

Through the generous support of our donors, the Foundation's impact on the community continues to grow. In 2014 alone, over \$2.4 million in grants supported the widest possible range of organizations and initiatives. Donor Advised and Donor Designated funds granted \$1.2 million into the community. Additionally, our unrestricted *Smart & Caring Community Fund* granted \$1.2 million to six game-changing projects that will help tackle our community's most pressing needs through the Foundation's Community Vitality grant program. Furthermore, the unrestricted *Smart & Caring Community Fund* supported the following organizations:

## ■ Arts, Culture, & Heritage

Aeolian Hall Musical Arts Association  
London Regional Children's Museum  
Museum London  
University of Western Ontario

## ■ Education

Brescia University College  
Brescia University College Foundation  
Growing Chefs! Ontario Society  
Literacy London Incorporated  
London Goodenough Association  
University of Western Ontario

## ■ Environment

Nature Conservancy of Canada  
Thames Talbot Land Trust  
Upper Thames River Conservation Authority

## ■ Health

Arthritis Society  
Brain Tumour Foundation of Canada  
Canadian Liver Foundation  
Canadian Mental Health Association  
London Health Sciences Foundation  
Schizophrenia Society of Ontario  
The Kidney Foundation of Canada

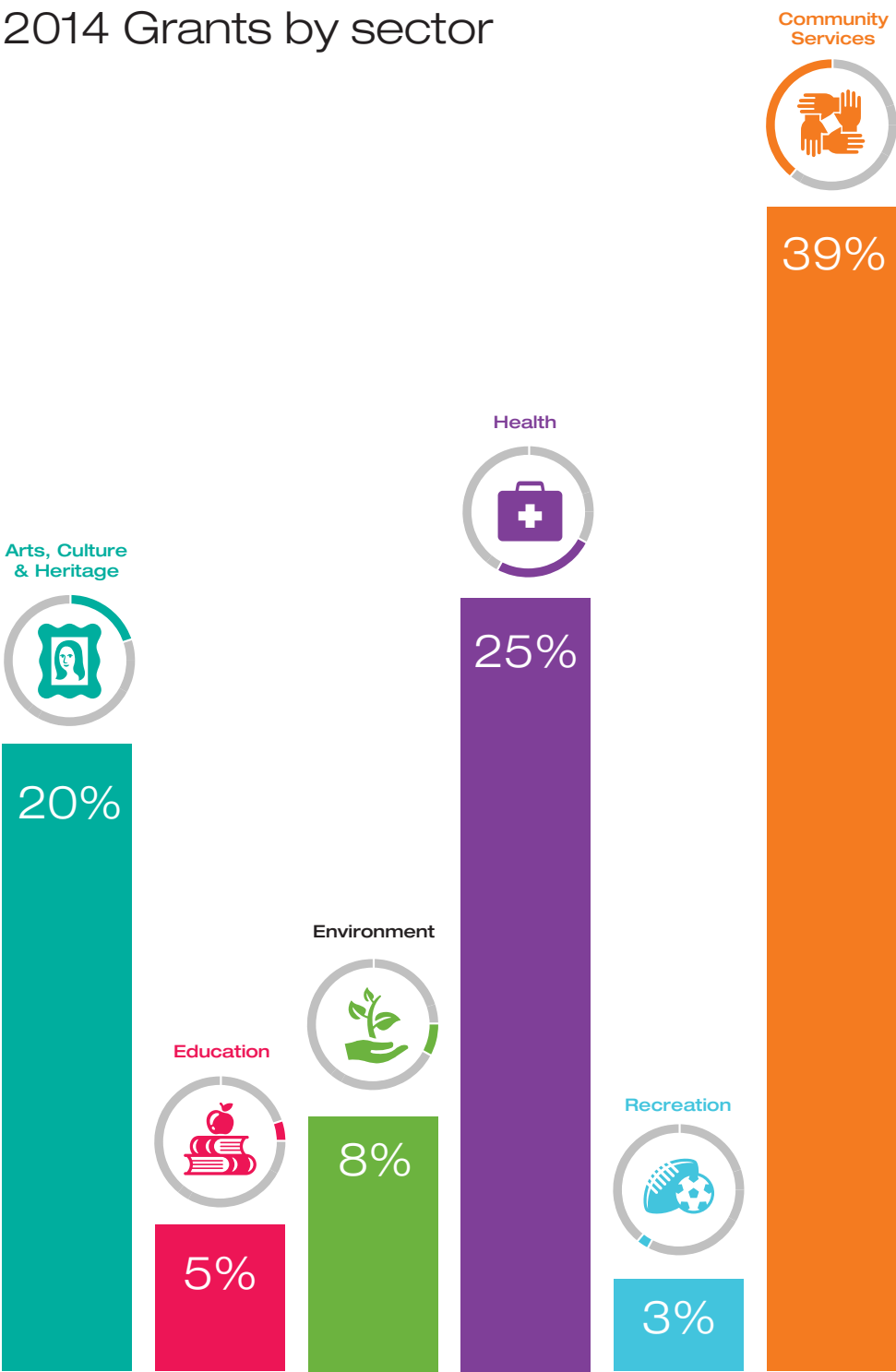
## ■ Recreation

Canadian National Institute for the Blind  
Hockey Helps The Homeless  
True Sport Foundation

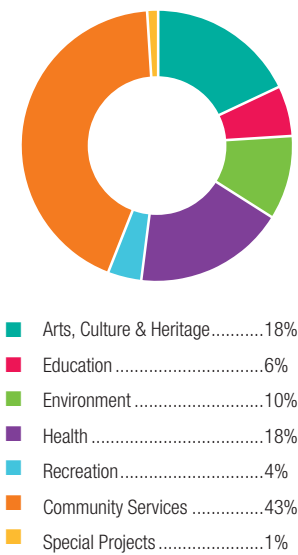
## ■ Community Services

At Lohsa Native Family Healing Services  
Boys' & Girls' Club of London  
Children's Aid Society of London and Middlesex  
Children's International Summer Villages Canada Inc.  
Community Foundations of Canada  
Faith Lutheran Church  
Family Service Thames Valley  
Habitat for Humanity Heartland Ontario  
Habitat for Humanity Toronto Inc.  
Hamilton Community Foundation  
London & District Distress Centre  
London Family Court Clinic Incorporated  
Low-Income Family Empowerment Sole-Support Parents (Life \* Spin)  
Merrymount Children's Centre  
Northwest London Resource Centre  
Parents of Technologically Dependent Children  
Pathways Skill Development and Placement Centre  
Pillar Nonprofit Network  
Right To Play International  
Sexual Assault Centre London  
Sisters of St. Joseph of the Diocese of London  
Thames Valley Education Foundation  
Unity Project for Relief of Homelessness in London  
Western Ontario Therapeutic Community Hostel Inc.  
WIL Counselling & Training for Employment  
Youth Opportunities Unlimited London and District

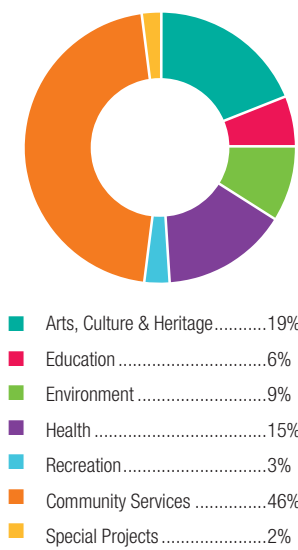
# 2014 Grants by sector



## 5 Years Grants by Sector



## 10 Years Grants by Sector





# 2014 Grants by fund type

Donor Advised **39%**



**DONOR ADVISED FUND** When you and your family (or your business or corporation) want to be fully involved. You recommend the grants; the community foundation does all the paperwork, in your name. Plus, you take advantage of our knowledge of local issues, if and when you want it.

Donor Designated **11%**



**DONOR DESIGNATED FUND** Choose specific organizations to benefit from your fund forever (designated funds are almost always endowed). Should the designated organization, or the purpose it served, eventually cease to exist, the community foundation will maintain your original charitable intent.

Field of Interest **9%**



**FIELD OF INTEREST FUND** Do you care deeply about a particular issue, such as the arts, education or health care, but not one particular charity? Field-of-interest funds follow the donor's wishes. Community Foundation staff continually monitor changing community needs to ensure that grants made in your fund's name have the most significant impact in your field of interest.

Registered Charity **16%**



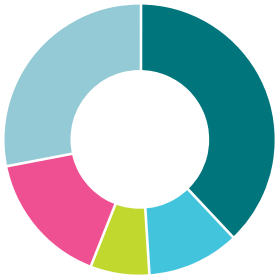
**REGISTERED CHARITY FUND** Many London and area nonprofits have already moved or established their endowments at London Community Foundation to take advantage of our investing capacity, stability, and ability to attract donors. An efficient way to support your charitable organization.

Community **25%**



**SMART & CARING COMMUNITY FUND** The earnings from all unrestricted donations make up the *Smart & Caring Community Fund*. The generous donors who established them were able to name their fund in honor or memory of someone, or create a charitable legacy in their family's name.

## 5 Years Grants by Fund Type



Donor Advised .....38%  
 Donor Designated .....11%  
 Field of Interest.....7%  
 Registered Charity.....16%  
 Community.....28%

## 10 Years Grants by Fund Type



Donor Advised .....37%  
 Donor Designated .....12%  
 Field of Interest.....6%  
 Registered Charity.....15%  
 Community.....31%



## Game Changers

### **Foundation tackles most pressing community needs with \$1.2 million in Community Vitality grants**

Funded by the Foundation's *Smart & Caring Community Fund*, the Community Vitality grant program strives to build a strong and vital community by investing in initiatives that will move the needle on London's most pressing issues identified in the Foundation's Vital Signs report. On November 25th, 2014, London Community Foundation granted \$1.2 million to six game-changing initiatives that will tackle issues such as poverty, mental health, homelessness, employment, environment, inclusion and belonging.





## Homes 4 Women – A Housing First Approach Adapted for Women

My Sisters’ Place, Canadian Mental Health Association, Middlesex- My Sisters’ Place; Women’s Community House; and Health Zone Nurse Practitioner-Led Clinic

Amount : \$250,000      Number of years: 2



Utilizing a housing first approach with supports, Homes 4 Women will assist women who experience chronic and episodic homelessness into stable successful housing. Currently there is no systematic collaborative strategy to direct and streamline services to optimize success for women. Because traditional homelessness supports have been developed with a gender neutral lens, women facing homelessness frequently fall through the cracks and remain invisible. Through this initiative fifty women will be housed with customized, around-the-clock supports such as health care, safety planning and counselling.



## El Sistema Aeolian

Aeolian Hall Musical Arts Association

Amount: \$182,500      Number of years: 2



For families of low socioeconomic backgrounds, accessing low cost recreational programming for children can be difficult. The El Sistema Aeolian program is an intensive after-school music education program provided free of charge to children and youth regardless of background, ability, gender or means. The main goal of the El Sistema program is to facilitate community development through the pursuit of music education. By helping children discover musical talents and work as part of a team, the program teaches children about the value of their contributions to the community while developing important life skills such as communication, problem solving, self-efficacy and self-esteem.



## Community-based income generating activities in London (IGAs)

African Canadian Federation of London and Area (ACFOLA) and Pathways Skill Development and Placement Centre

Amount : \$285,000

Number of years: 2



Striving to tackle the high unemployment rate in London, this initiative will pool human and financial resources to facilitate employment opportunities by creating Income Generating Activities (IGAs), impacting the livelihood of 45-75 families over the next four years. The goal is to demonstrate that pooled resources can provide a stable financial base to launch successful IGAs that create income by developing products that consumers want. The hope is that this project will inspire individuals in the community to become more involved in creating their own employment opportunities.



## Single Ceiling Project

Merrymount Children's Centre; Faculty of Education, Western University; Child and Youth Network, City of London

Amount : \$150,000

Number of years: 1



This initiative aims to systematically change the way children's mental health care is delivered by organizing children's mental health systems and experts all under one roof; a single ceiling approach. This will allow for more sharing of information to ensure that children in our community are getting the care they need without being bounced around to various service providers. Experts will be able to help more children while also researching new, evidence-based treatments that will substantially change the way we treat children's mental health. This approach is the first of its kind in North America. The hope is that the Single Ceiling Project will become a model for other communities across Canada and the United States.



## Sustainable Neighbourhood Retrofit Action Plan in Glen Cairn (SNAP)

Upper Thames River Conservation Authority

Amount : \$270,000

Number of years: 2



This initiative aims to accelerate the implementation of Low Impact Development (LID) by empowering the Glen Cairn community with the knowledge to implement these tactics. With climate change, traditional storm water management techniques cannot handle extreme waterfalls and melting events. This results in erosion and an increased risk of floods. The water picks up contaminants from roads, sidewalks and yards and transports them into creeks and streams and eventually Lake Erie. Low-impact development treats rainfall where it falls and slows down the flow to larger water courses. This initiative will bring the Glen Cairn Community together in a community building exercise and improve the health of the local environment.



## Southwestern Ontario Aboriginal Youth Opportunities Project (AYOP)

Right to Play International

Amount : \$118,035

Number of years: 3



This initiative is an innovative partnership between Chippewas of the Thames First Nation, Walpole Island First Nation, Aamjiwnaang First Nation and Right to Play. The project will empower and educate Aboriginal children and youth in the London region through collaborative, year-round leadership and life-skills development programming. The grant will enable the above First Nation communities to implement year-round weekly programming for Aboriginal children and youth in their community while creating meaningful employment opportunities for First Nation youth. London will become the hub for Aboriginal youth programming through bi-monthly inter-community youth-worker forums.





# Gord and Vicki Drimmie

Personal experiences can have a powerful impact on our passions and drive to make a difference. For Gord & Vicki Drimmie, the experience of having family members rely on community support inspired them to give back.

As an employee at the Ford St. Thomas Assembly Plant, Gord experienced the sense of community and personal commitment that annual United Way drives can bring to bear on one's outlook. After hearing the story of Jack Welch, the highly successful CEO of General Electric who, with great candour, identified the main reason for his success as simply "getting on the right train", it clearly registered that success, to some extent, is often about being in the right place at the right time. Those life experiences at Ford encouraged Gord to reflect on his own life's trajectory. Thankful to be successful and financially sound, he was struck by the thought that so many people in our community have to worry about things so simple as paying the rent and putting food on the table.

Always a numbers man, Gord had a hobby of following the financial markets and was introduced to the idea of setting up a charitable fund after reading an article about the

London Community Foundation in the local newspaper. Gord & Vicki had been making individual donations to a variety of different charities for some time. But for the Drimmies, the idea of investing funds into an endowment fund to create a continual stream of funds for charitable causes was very appealing. By setting up a Donor Advised Fund, a lasting legacy could be created amplifying the benefits for the causes most important to them.

"Our Family Fund will be our legacy and will ensure a stream of funds to our chosen social agencies for an indefinite period," says Gord.

"It gives us confidence and satisfaction knowing the care and due diligence that LCF exercises in the investment of funds and awarding of grants. LCF has a thorough understanding of community needs and has the ability to make strategic decisions with

great impact," says Gord. "We greatly appreciate their oversight, expertise, and guidance."

When various family members fell victim to issues including substance abuse and Alzheimer's, Gord and Vicki felt compelled to contribute to social services in a bigger way. The Alzheimer's Society of London and Middlesex was an obvious choice for support; but Gord and Vicki also began granting to Turning Point, a recovery home that provides temporary residence and support to individuals who have fallen prey to the ravages of substance abuse.

"Turning Point does a great job allowing residents to interact with peers who have lived the life, experienced the pain, and who are realists who understand the issues and can facilitate their recovery," explains Gord.

Gord and Vicki feel privileged to have the opportunity to support causes that hit close to home. They strongly believe that those who are fortunate enough to be able to help must not pass up the opportunity – and the social responsibility – to assist those who need help. A "Hand-Up" is always a good thing, and can be a source of great satisfaction to those helping people in need.

A photograph of an elderly man with white hair and glasses, smiling. He is wearing a dark blue t-shirt with a logo that says "DETROIT REHABILITATION INSTITUTE OF MICHIGAN & ATHLETICS" and "DIEHARDS". The background is a blurred indoor basketball court with other people in wheelchairs.

“Sharing my  
passion for the sport  
is a wonderful feeling.  
It gives me pride to know  
that through my legacy,  
the London Wheelchair  
Basketball Association will  
continue to be supported  
for years to come.”

– *Harvey Bishop*

# Harvey Bishop

When Harvey Bishop moved to London in 1957 to attend Western University, little did he know that one day he would leave a charitable legacy in this community.

A loyal supporter of the London Wheelchair Basketball Association, Harvey has had the opportunity to impact the lives of numerous disabled basketball players.

An avid basketball player in his hometown of Ridgetown, Harvey immediately got involved in recreational basketball as a referee during his time at Western University.

After finishing his studies, Harvey began his career at London Life in the actuarial department. One of his fellow employees happened to be one of the founding members of the Wheelchair Basketball Association of London and asked Harvey if he would be interested in refereeing. Passionate about the sport and always looking for ways to give back, Harvey willingly agreed.

After learning about the work of London Community Foundation through various co-workers and friends, Harvey established a fund within the Foundation's unrestricted *Smart & Caring Community Fund*. Holding the Foundation's sound

governance and due diligence in high regard, Harvey believed giving to the Foundation's unrestricted fund was an opportunity for him to be more strategic with his impact on the community. He had already been giving back in various ways and working with the Foundation seemed to be the most efficient way to give.

"The staff at the Foundation have in-depth knowledge of the issues facing our community," says Harvey. "This allows them to grant in the most strategic way."

Making contributions to the *Smart & Caring Community Fund* for many years, in 2014 Harvey believed it was time to evolve his charitable giving. With a desire to have a more personal impact, Harvey switched his Community Fund over to a Donor Designated Fund: The London Wheelchair Basketball Association Fund.

As a longtime volunteer of the organization, he wanted to give back in a bigger way.

"I had been making charitable gifts to the London Wheelchair Basketball Association for quite some time," explains Harvey. "This fund will ensure that the association continues to receive funds even after I am gone. It also allows others to contribute to the fund. It's a smart way to give."

The London Wheelchair Basketball Association Fund will support the needs of the players, including the funding of new wheelchairs.

Harvey believes the experience of giving individuals who are physically disabled the opportunity to play basketball is invaluable.

"Sharing my passion for the sport is a wonderful feeling. It gives me pride to know that through my legacy, the London Wheelchair Basketball Association will continue to be supported for years to come."





## Shelly and Bob Siskind inspire London's next-gen community builders to get engaged

Engage! London is a program for professionals in our community that helps them find the “good” in doing good. By connecting participants to causes they care about most and showing them how to make an impact, Engage demonstrates to participants that they can make a meaningful difference in our community.

Bob and Shelly Siskind are mentors in this program. We were lucky enough to chat with Bob and Shelly about their own community involvement and experiences being Engage! London mentors.



# Mentoring the next generation

## Q & A with Shelly & Bob Siskind

### **How did you become involved in community work?**

Shelly: Giving back was always part of our family value system so it came naturally. We are fortunate for all the opportunities we've been given in life and believe it's important to give back.

### **What interests you most about the Engage! London program?**

Shelly: Being an Engage mentor is a direct way for us to give back. Often we give back through board work but mentoring is very hands on. The individuals who are part of the Engage! London program are a group of people who have volunteered to make our community a better place; how could anyone refuse that! Learning and being with passionate and vibrant people is a privilege.

### **What is the most rewarding aspect of this program from a mentor's perspective?**

Bob: We get to work with a diverse group of professionals. No two people are from the same background. It's interesting to see how each individual applies their own perspective to the various case studies.

Shelly: You really get a snapshot of the community. It's fun to see the diversity in skills and it's

exciting to take a look at the case study organizations with fresh perspectives. What I love is that you're applying creativity in a pragmatic way.

### **What do you feel is the most important lesson participants gain from Engage! London?**

Shelly: To take their ideas and apply them in a concrete way. Participants gain a diverse set of skills and get exposure to different ways of solving problems.

Bob: I think it's understanding the power of giving back. Participants learn they can have an impact on the community and that the skills acquired in their professional lives are transferrable.

### **Did you have any leaders or mentors in your life's journey? How did they influence you?**

Bob: J. Allyn Taylor. He achieved great success with his community work but was very humble about it; that always impressed me. I loved his wisdom.

Shelly: I had many mentors. The ones who were most influential were those who lived their lives by example, didn't take no for an answer and had that "just do it" attitude. I admired strong female leaders, those who encouraged me to think expansively and pragmatically.

### **How were you able to balance your professional and family lives with volunteer efforts?**

Bob: The most common excuse I hear from people is that they don't have time to volunteer. Yes, you do have time. We all have the same amount of time in each day; it's how you allocate it.

Shelly: You need to make your volunteer work fit your lifestyle. Make it fun, make it something you are passionate about and want to do.

### **What's the best advice you could give to a younger professional who is looking to get involved in the community?**

Bob: Expand yourself beyond your education; get involved in the community in a way that makes you feel comfortable. Set your goals higher each time you participate and enjoy the process.

Shelly: Make time to do something for your community. What you will get out of it will be far beyond what you expect. Expect the unexpected and know that you have gifts that you may not realize. Giving back to the community is fun! Follow your heart and don't be afraid to take risks.



From left: Michael McDonald,  
Phil Killeen, Brian McGorman



# CIBC Wood Gundy Drives Change in Honour of Colleague

Too well-admired to ever be forgotten, Rob Killeen's legacy lives on through the Rob Killeen Memorial Fund at London Community Foundation. Sharing his passion for children, the outdoors and physical activity, the Rob Killeen Fund made a grant of over \$11,000 to the Anago Outward Bound summer program; a program that provides high-risk adolescent females with an unforgettable and empowering summer camp experience.

After losing his courageous battle to cancer, Rob's peers at CIBC Wood Gundy, Michael McDonald, Brian McGorman, Patrick O'Neill and Shawn McConville, came together with Phil Killeen, Rob's brother, to honour his legacy by starting and seeding the Rob Killeen Fund at London Community Foundation. With a desire to ensure his legacy in the community and highlight a passion for improving the lives of children and youth, funds were pooled from memorial donations, Rob's family and CIBC's Miracle Day to begin a Donor Advised Fund at the Foundation. Highly esteemed by his peers, the creation of the Rob Killeen Fund inspired the staff at CIBC to band together for a cause that represented the strength and courage embodied by their former friend and colleague.

Throughout the six year life of the Rob Killeen Fund, Advisors at CIBC have worked closely with London Community Foundation to fund worthy causes based on Rob's passion and interests. In 2014, when the Foundation met with the staff at Anago, they knew they had found a cause that Rob Killeen would have supported wholeheartedly.

As a man who believed in inspiring the lives of children and youth and led a very active lifestyle, the Anago Outward Bound program was a natural fit for the Rob Killeen Fund. Serving mentally fragile female youth, many of whom have experienced violence and abuse, addiction issues and run-ins with the law, Anago's Outward Bound program will provide these young women with an exciting wilderness excursion.

Helping develop self-esteem and self-confidence through shared group experiences in unfamiliar settings, the program prepares youth to be effective, contributing and resilient leaders within their own lives and their own communities. The young women will confront difficult tasks and learn to call upon their individual strength and perseverance to overcome challenges.

Thanks to the help of the Rob Killeen Fund and other donors within London Community Foundation, the Outward Bound summer program was made a reality for youth seeking self-confidence and empowerment. Without this funding the program would cease to exist.

The Advisors of the Fund at CIBC Wood Gundy are so pleased to see the momentum the firm has created with the Fund over the years. Providing a common cause for all to connect with, it has truly demonstrated a collective conscious. By seeing the impact this grant will have on the youth at Anago, they sincerely hope that everyone at CIBC Wood Gundy will be reminded of Rob and feel compelled to make a difference.





# Ivey Award for Environmental Excellence

The Ivey Award for Environmental Excellence recognizes an individual who has improved the quality of life in London or Middlesex County through his or her voluntary contributions to the environment in environmental justice, natural resource protection, conservation, advocacy, awareness, philanthropy, or land stewardship and management. The recipient has the ability to direct \$2,000 towards the charity of their choice.

## Stan Caveney

Stan Caveney was the recipient of the 2014 award, nominated by Thames Talbot Land Trust.

Stan has provided leadership in countless instances for numerous organizations. He actively leads group tours of Thames Talbot Land Trust (TTLT) properties to encourage community support for protecting natural areas. He has spearheaded three fundraising campaigns, (Tanager Tract 2011), (Wardsville Woods 2012), (Lusty Family Tract 2014), by igniting grassroots and community support for protecting our environmentally significant lands. The Thames Talbot Land Trust would not be the prosperous and respected

environmental organization that it is without Caveney's leadership.

He is a field trips leader for Nature London and he has served as president of TTLT and the Lower Thames Valley Conservation Authority. He has most recently been presented a 25-year service award as a scout leader with Scouts Canada. He is also currently taking leadership on a project with the Carolinian Canada Coalition and Ontario Nature to create a Natural Heritage Inventory and an Elgin Greenway Conservation Action Plan.

Stan has donated his \$2,000 to Thames Talbot Land Trust.



# 2014 J. Allyn Taylor Community Service Award

The J. Allyn Taylor Award recognizes students who exhibit outstanding service and are actively involved in their community. The award pays tribute to Foundation founder, J. Allyn Taylor, who was affectionately dubbed “Mr. London” for his passion for giving back to the community.



Ghadeir Ghadeir Madlol & Curtis Hiscox

## Ghadeir Madlol

2014 J. Allyn Taylor Award Recipient

Ghadeir, nominated for her dedication to helping others, is a caring studious, athletic and goal oriented young woman. She has only been in Canada for a short time and has already volunteered 600 hours to her new community! Her passion for helping others in need is evident. For example, being a newcomer to Canada, she understood the struggles of language and cultural acceptance and realized it was time to help others in her community facing that struggle by acting as an interpreter. Ghadeir has also demonstrated her passion for helping others by volunteering at the Boys and Girls Club summer camps. Highly driven, she has set ambitious goals for her future and hopes to one day become a lawyer so that she can help individuals in need. To recognize her outstanding contributions, Ghadeir was awarded \$1,500 to the Canadian post-secondary institution of her choice as well as \$500 awarded to the charity of her choice. Ghadeir directed her donation to the Boys and Girls Club of London.

## Curtis Hiscox

1st runner-up, 2014 J. Allyn Taylor Award

Nominated for his natural leadership qualities, Curtis loves to give back and feels great satisfaction in dedicating his time and heart to empower youth, helping those in need. Curtis is involved in numerous volunteer activities such as a Jr. Coach for Red Circle Hockey Organization, Youth Impact Guitar Instructor Helper, Volunteer Ya!, Real Voice City of London as well as school initiatives that include the Gay Straight Alliance, Sea of Pink anti-bullying day, Clarke Road Theatre, and Healthy School Committee, to name a few. Curtis was awarded \$1,000 towards the post-secondary institution of his choice.

# Vital People Award

Recognizes employees at charitable organizations by providing grants toward professional development endeavors. Nominees must demonstrate leadership, be employed by a registered charitable organization, work in London/Middlesex County and have a passion for professional growth.



From left: Jane McGregor, interim Executive Director, Sexual Assault Centre London; Heather Fredin, Counsellor, Sexual Assault Centre London; Jennifer Noel, Chair, Sexual Assault Centre London



From left: Carl Cadogan, CEO, Brain Tumour Foundation of Canada; Janic Gorayeb, Health Information Specialist, Brain Tumour Foundation of Canada



From left: Kate Ledgley, Director of Visitor Experiences, London Children's Museum; Amanda Conlon, Executive Director, London Children's Museum

## Heather Fredin

**Counsellor, Sexual Assault Centre London**

Heather will learn Eye Movement Desensitization and Reprocessing (EMDR) therapy which is an integrative psychotherapy approach extensively researched and proven effective for the treatment of trauma and many other mental health problems. EMDR therapy is helpful in supporting those who are seeking assistance with intrusive thoughts, images and feelings as a result of traumatic events.

## Janic Gorayeb

**Health Information Specialist, Brain Tumour Foundation of Canada**

The funds from Janic's Vital People award will be utilized for tuition towards her Masters in Leadership, Health Specialization Stream at Royal Roads University. The MA in Leadership program consists of two years of interdisciplinary study. In each year, students focus on relevant, real world problem-solving projects grounded in a rigorous theoretical understanding of the nature of today's organizations and the changing role of leadership within them.

## Kate Ledgley

**Director of Visitor Experiences, London Children's Museum**

Kate will attend the Association of Children's Museums (ACM) Interactivity Conference 2015: Bringing the World to Children and Families, being held in Indianapolis May 13-15, 2015. Kate will develop an international network of contacts and gain a unique perspective and in-depth understanding of the role children's museums play in the development of children and families around the world.



# Vital People Award



From left: Cheryl Legate, Executive Director, London and District Distress Centre; Kim Newman, Chairperson of the board of directors, London and District Distress Centre

## Cheryl Legate

**Executive Director, London and District Distress Centre**

Cheryl will become a certified facilitator in a 5-day training course: Mental Health First Aid. This program is recognized as a leading Mental Health educational tool for those who work with, and encounter, individuals who are experiencing mental illness. Having a London and District Distress Centre staff member trained as a facilitator in “Mental Health First Aid” will allow London and District Distress Centre to save thousands of dollars each year by providing the training to other employees and volunteers at a fraction of the cost, as well as expand that training opportunity to the broader community.



From left: Louise Pitre, Executive Director, Family Service Thames Valley; Jonathan Schmidt, Community Counselling Program Counsellor, Family Service Thames Valley

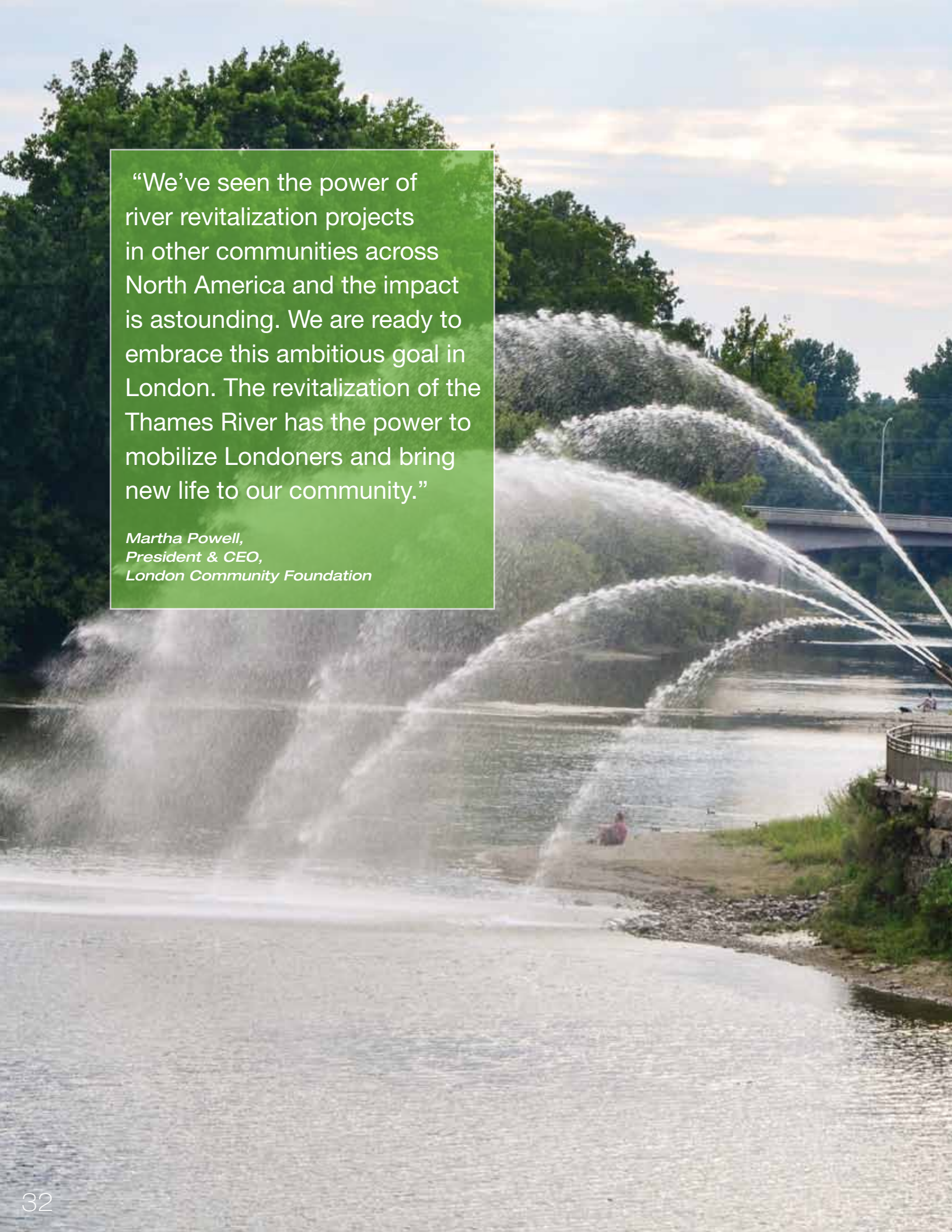
## Jonathan Schmidt

**Community Counselling Program Counsellor, Family Service Thames Valley**

Jonathan will enroll in the Sensorimotor Psychotherapy Institute’s Level I: Affect Dysregulation, Survival Defenses, & Traumatic Memory training program. This will allow clients to receive improved psychotherapeutic services to better heal from their traumatic experiences. Additionally, Jonathan will share the knowledge he gains with co-workers and in the Internship Seminar presentations. This will result in improved training of internship trauma services for clients while at the agency, but also by increasing the capacity of psychotherapists in the community.

Smart & Caring Leadership

**Foundation spearheads river revitalization  
to mobilize Londoners**



“We’ve seen the power of river revitalization projects in other communities across North America and the impact is astounding. We are ready to embrace this ambitious goal in London. The revitalization of the Thames River has the power to mobilize Londoners and bring new life to our community.”

*Martha Powell,  
President & CEO,  
London Community Foundation*



# Back to the River

With such a rich history behind it, the Thames River is not simply a landmark for the city of London. It is so much more. The Thames River is inexorably tied to London's identity. Representing its past, the early settlers saw the great value the river possessed in terms of sustenance, transportation, industry and life. Despite its historical significance, in recent years as a community, London has moved away from its roots, furthering itself more and more from this vast resource that was once synonymous with community vitality.

The Thames River is the heart of London: past, present and future. Though in present day its significance may not be as evident, the time has come for London to rediscover the value of this city's landmark and go back to the river.

One of its most visionary proposals yet, the Foundation will be spearheading a North American design competition to revitalize the land along the Thames River. Striving to enhance community quality of life, environmental and economic development, the goal is simple: give Londoners a place to work, to play and call home. Give Londoners a place that brings the entire community together.

The revitalization will take place along a five kilometer stretch emanating from The Forks to Oxford Street and Adelaide Street

South bridges and the stretch of river between Wellington Street and Adelaide Street South.

London Community Foundation is so committed to this river project that it has established connections with the City of Pittsburgh and RiverLife – Pittsburgh's coalition of groups responsible for the amazing revitalization of that city's riverfront. What has happened in Pittsburgh in the last fifteen years has been nothing short of remarkable and has helped that city find its feet again. The economic benefits derived from that effort have successfully rebooted the local economy and re-established a strong sense of community pride. London Community Foundation is determined to spearhead the effort to bring similar benefit to the fair city of London by reaching out to Pittsburgh's leaders for their vision

and expertise. That's how much the Foundation believes in this grand project.

With a mission to make London a smarter, more caring community, Back to the River is an integral part of the Foundation's new strategic plan that embraces community mobilization and civic engagement. The Thames River has and continues to be one of London's most definable community resources that contributes significant economic, recreation, social and other benefits highly valued by Londoners and central to London's story- past, present & future. That is why we believe so strongly this project has the power to catalyze community change.

"Change occurs when people believe in it," says Martha Powell, President & CEO, London Community Foundation. "The Foundation believes in London and I know this project has the power to bring new life to our community."





# Thank you!

## Named Funds

The support of our donors is invaluable to us. Your generous contribution helps us create a community that offers an improved quality of life and equal opportunities for all citizens living in London Middlesex region. By donating to London Community Foundation you are helping facilitate community-wide change.

## Community Fund

*When you support the Community Fund, your gift is endowed in perpetuity as an unrestricted donation that allows the Foundation to support strategic and innovative granting. Many people have established a named Community Fund with an initial donation of \$1,000 and a four-year pledge to reach the \$5,000 fund minimum.*

Aaron Family Fund

### **Alec and Joy Richmond Family Fund**

Allyn and Betty Taylor Family Endowment Fund

Angie and Cal Stiller Family Fund

Annabelle and Ron J. Logan Family Fund

### **Aurelia Hernandez Fund**

Barrie & Anne Neal Family Foundation Fund

Barry Pawley Grunple Fund

Beth and David Girvan Family Fund

Betty and Len Macdougall Family Fund

Bettye and John Girvin Family Fund

Bogdan Popovic Family Fund

Bookmark Photography Fund

Brander Family Fund

Campbell Bros. Movers Foundation Fund

Canada Trust (London) Employees' Charity Fund

Carol and Bud Johnston Family Fund

Charles and Sue Thompson Family Fund

CIBC Trust Corporate Fund

Dawn and Franco Paron Family Fund

Diane Y. Stewart Fund

Dillon Consulting Fund

Dot and Verse Cronyn Fund

Dr. & Mrs. Frederick W. Luney Family Fund

Dr. Olive and Ila Stewart Family Fund

Echidna Solutions Corporation Community Investment Fund

Edith Kains Fund

Edward and Dawn Ralph Family Fund

Eizenga-Cahill Family Fund

Evelyn and David Stiller Family Fund

Faust Family Fund

Fred & Beverly Galloway Fund

Gael and William T. Webster Family Fund

Gordon Lindsay Fund

Grace and Donald Wallace Family Fund

### **H. Franklin Sherlock Fund**

Heather and Gerald Klein Family Fund

Helen, Jean and Kay Renwick Memorial Fund

Hilstad Family Fund

Howie and Doris Evelyn Dunn Fund

Ian and Nell Haldane Fund

James & Florence Gibson Family Fund

Janet and Ross Imrie Fund

Janet Stewart Fund

Joan VanDuzer Family Fund

John L. M. and Ruth E. Fitzgerald Fund

June and Ronald Dawson Family Fund

Keith and Irene Muchan Family Fund

Kellogg Canada Inc. Fund

Koreen Family Fund

Lerners Fund

Libby and Peter Fowler Family Fund

Lockhart Foundation Fund

London 200 Endowment Fund

London Investment Dealers Association Fund

London Life Insurance Fund

Lorraine Ivey Shuttleworth Community Fund

Lucille and Norton Wolf Family Fund

Lucy Little Family Fund

Margaret and Innes Hammond Fund

Margi and John Nash Family Fund

Marion and Don Simpson Family Fund

Mary Ann and Bill Brady Family Fund

McClenaghan Family Fund

Mildred and Alexander Maclean Fund

Mitchell and Kathryn Baran Family Fund

Mr. & Mrs. Frank B. Campbell Fund

Mr. and Mrs. R.W. Trollope Family Fund

Myers Hayman Fund

Noble Fund for Family Giving

Penney and Peter McCain Family Fund

Richard and Jean Ivey Memorial Fund

Ritchie Family Fund

Rob Badun & Eileen Gillese Fund

Rochelle and Robert Siskind Family Fund

Sari and Sydney Vaisler Family Fund

Sellery Family Fund

Semotiuk Family Fund

Sheffar Potter Muchan Inc. Fund

Siskind, Cromarty, Ivey and Dowler Fund

Stephen A. Hayhurst Fund

Stuart and Jeannette Eberhard Fund

T.W. Johnstone Family Fund

Ted and Grace Kennedy Memorial Fund

The John and Arlene Cram Family Fund

The Lawson Foundation Challenge Fund

Tom & Shirley Mitchell Family Fund

William A. and Nan Paterson Family Fund

## Donor Advised Fund

*Many people support the community through a personal Donor Advised Fund. Functioning like a private foundation, Donor Advised Funds allow donors to choose which charities to support each year.*

2001 London Alliance Canada Summer Games

### **Ainsley Delaire Memorial Fund**

Alex Thomson Family Fund

Alexander Family Fund

All For Kids Fund

Allan and Susan Edwards Family Fund

Andra and Patrick O'Neill Family Fund

Arlene & Terry Campbell Homeless Fund

Ashley Grace Powell Memorial Fund

Bansal Family Fund

Beverly N. Baines Fund

Bourne Family Fund

Bowden Family Fund

**Brenda MacKay Memorial Fund**

Butler Family Fund

Cec Rorabeck Sr. Memorial Fund

Cold Springs Farm Fund, a member of Maple Leaf Foods; In Honour of Harvey and Erma Beaty

DeKay Family Fund

Dr. JC Kennedy Memorial Endowment Fund

Faith Tilk Memorial Fund

Gordon & Victoria Drimmie Family Fund

Haines Family Fund

**Jack & Louise Speake Family Fund**

Jean and Angus McKenzie Family Fund

John A. Taylor and Dr. Margaret A. Kirk Fund

John and Terri Kennedy Family Fund

Joseph Rea Environmental Fund

Judge John and Mrs. Jessica Seneshen Family Fund

Julia Hunter Memorial Fund

Jung Family Fund

Kayser Family Foundation

**Keith and Lynn Watson Family Fund**

Kirkby Bice Family Fund

London Endowment for Heritage Fund

London Life Community Fund

MacDonald-Pierce Foundation

Making a Difference - C. & J. Wright Family Fund

Marjorie and Brayl Copp Family Fund

McBurney Fund

Megan Holliday Memorial Fund

Michael Halls Social Services Fund

Milton and Jean Broderick Charitable Fund

Panabaker O'Neill Family Fund

Rasmussen Family Fund

Richard and Beryl Ivey Fund

Rick and Carol Richardson Family Fund

Rob Killeen Memorial Fund

**Robert and Moira Sansom Ideas Foundation**

Schalk Family Fund

Serendipity Fund

Springdale Foundation Fund

Terry and Doug Zavitz Family Fund

**The David A. and Eleanor E. Morrison Charitable Fund**

The Good Earth Fund

The Thirty-Two Associates Fund

Tom and Sue Allan Family Fund

William and Katharine Kostuk Family Fund

Willoughby Family Fund (DA)

**Youth Leadership Foundation**

**Donor Designated Fund**

*Donor Designated Funds allow donors to make a one-time selection of which non-profit organizations they would like to support annually and create a named legacy.*

Adam and Michelle Bain Family Fund

Allan and Jean Coote Fund

Allyn and Betty Taylor Family Endowment Fund

Arch Angelus Sturaitis and Laura Sturaitis Creative Control International Giving Fund

Arthur and Shirley Currie Family Fund

Associates Canada Fund (Citi Financial)

Barbara and John Cronyn Fund

Beth Girvan Children & Youth Fund

Bryan Walsh Memorial Fund

Cam Willis and Dale Atchison Willis Family Fund

Canaidian Fund

Chris Doty Endowment Fund

Connie Cunningham Memorial Bursary Fund

Cutsey Family Fund

Dale & Marion Creighton, Wil Rice, Bill Traut Athletic Award

Daphne & George Chorley Family Fund

Dave Richards Memorial Fund

**Devereux VanOstrand Fund**

Diane Y. Stewart Endowed Scholarship Fund

Diann Vail's Fairy Godmother Fund

Donald and Elizabeth Ness Fund

Doris Anna Foster Family Fund

Dorothy and Douglas Parnell Fund

Dr. Marvin S. & Anne D. Smout Family Fund

Eleanor and John Graham Foundation

Elizabeth C. Taylor Memorial Fund

Elizabeth Forbes Fund

Elsie Victoria Laing Memorial Fund

Faulkner Family Fund

Gerry and Vi Livingston Family Endowment Fund

Gertrude Vaughan Dragon Fund

Greg Curnoe Public Art Endowment

Harry and Jennie Jones Fund

Harvey Sullivan Endowment Fund

Ian and Lilyane Moyer Family Fund

J. Douglas Earthy Fund

J.B. Walker Memorial Endowment Fund

**Jack and Carolyn Scott Fund**

Jack and Nancy Jane Coups Family Fund

Jack Nichol Family Fund

Jamie Williamson Memorial Fund

Jean Bromley Fund

Jennifer Mott-Mifflin Memorial Fund

**Joanne & Tony Crncich Family Fund**

Jon and Roberta Hall Fund

Judge Maurice Genest Children and Youth Fund

Julia Beck Trust

Kay and Bob Elsdon Family Fund

Lakshmi Goela Memorial Fund

Larry and Susan Agranove Family Fund

Larry G. Myny Fund

LDCA - Jock Tindale Fund

London Branch ORMTA Fund

London Chamber of Commerce Corporate Challenge Legacy Fund

**London Wheelchair Basketball Association Fund**

Lottie Brown Choral Fund

Marvin S. Smout Endowment Fund

Mary and Arnold Stapleton Fund

Mary and Harold Carioni Fund

McNee Family Fund

Memorial & Funeral Advisory Society of London Fund

Montcalm 25th Anniversary Fund

Muriel McGuire Memorial Fund

Nicholson Family Fund

Oakridge Presbyterian Church Outreach Fund

Paul and Bernadette Wainwright Family Foundation

Paul and Suzanne Manders Family Fund

Rainbow Youth Bursary Fund

Robert H. Forbes Fund

Ronald and Lois Orr Memorial Fund

Ross Imrie Scholarship Fund for Junior Achievement

Roy and Gloria Cairncross Fund

Stephen and Linda Frosst Adams Fund

Thomas G. Whealy Fund

Tommy Readings Spirit Award

Treatment for Childhood Cancer Patients Fund

Van Dyck Colaes Fund

Verna D. Davis Endowment for the Arts

Verna J. Pierce Bursary Fund

William and Bernice Forbes Fund

William and Joan Intven Fund

William Proudfoot House Fund

### Field of Interest Fund

*Field of Interest Funds help a donor target gifts to address an issue area that they feel is vital to community life. Field of Interest Funds allow donors to support various charities in this area each year.*

Acorn Fund for Youth - In Honour of Terry Campbell

Alfred Edward Hathaway Petrie Memorial Fund

Beryl Ivey Endowment for the Arts

Beryl Ivey Endowment for the Environment

#### **Isabel Hodgkinson Fund**

Karen Ohland Memorial Fund

Keith Samitt Fund

Ontario Endowment for Children and Youth in Recreation Fund

STAY CLEAR Fund

TD Canada Trust Merv Lahn Community Development Fund

Wood Gundy Children's Miracle Day Fund

### Social Loan Fund

*The Loan Fund is a new social investment program that turns donations into capital loans for community and non-profit groups. With access to funding they typically couldn't get from a bank, groups can further their mission more efficiently and effectively.*

Anonymous Donor

Aurelia Hernandez

Bansal Family Fund Diane LeBlanc

### Registered Charity Fund

*Registered Charity Funds allow registered charities to create their own endowment, building reliable income for their organization.*

Beryl Ivey Women's Community House Endowment Fund

Big Brothers Big Sisters of London & Area Endowment Fund

Brain Tumour Foundation Endowment Fund

Community Care Access Centre (Ldn-Midd) Foundation

Conservatory Canada Endowment Fund - General

Conservatory Canada Endowment Fund - Scholarships

Daily Bread Endowment Fund

David Bloom Fund

Elgin Children's Foundation

Grand Theatre Endowment Fund

Hannah Patterson Legacy Fund

J Allyn Taylor/Canadian Medical Hall of Fame Endowment Fund

#### **Jane M. Bowles Stewardship Fund-Thames Talbot Land Trust**

John and Lowell Barron Amabile Choirs Fund

John McKim Childreach Fund

Kelly Northey Fund

London & Middlesex Stability Fund

London Humane Society Endowment Fund

London Regional Children's Museum Founders' Fund

Orchestra London Canada Endowment Fund

ReForest London Endowment Fund - The Community and Corporate Stewardship Fund

Richard and Beryl Ivey Fanshawe Pioneer Village Endowment Fund

SARI Riding for Disabled Endowment Fund

St. Aidan's Anglican Church Endowment Fund

St. Paul's Cathedral Endowment Fund

Thames Talbot Land Trust Fund

United Way of London & Middlesex Forever Fund

Urban League of London Endowment Fund

# Thank you!

## Donor Recognition

In these pages, we thank the donors who have made gifts totaling \$1,000 or more to the Foundation. Every effort has been made to ensure this is an accurate list of all donors who have made charitable contributions to London Community Foundation. If you notice an error, please accept our apology and let us know so we can update our records.

|   |   |   |
|---|---|---|
| Anonymous (30)  | Anne and James* Fisher                                      | Bernard & Norton Wolf Family Foundation       |
| 1061346 Ontario Ltd.                                      | Anne and John McLean  | Bernard Wolf*                                 |
| 2001 London Alliance Canada Summer Game Host Society Inc. | Anne and Robert Simpson                                     | Beryl* and Richard M. Ivey                    |
| 3M Canada Inc.  | Anne and William* McKenzie                                  | Beth and David Girvan                         |
| 947465 Ontario Ltd.                                       | Anne D. and Marvin S.* Smout                                | Beth and Stewart Bailey                       |
| Adriene and Hans Jonckheere                               | Anne H. Ames*   | Betsy and Sheldon Aaron                       |
| Agnes Paterson*   | Anne Louise Haslett*  | Betsy and Tony Little                         |
| Alan and Susan Torrie                                     | Anne Rasmussen  | Betty and Leonard Macdougall*                 |
| Aldena and Kerry Gerber                                   | Annie and David Shum  | Betty Ann and Peter* Widdrington              |
| Alex Thomson*   | Anthony Porteo  | Betty Grant Kennedy                           |
| Alex* and Elizabeth McIntosh                              | Antonia and Johannes* Schalk                                | Betty Seldon-MacFarlane                       |
| Alexander Johnston  | Aon Consulting Inc.   | Bettye and John Girvin                        |
| Alexandra Dousmanis-Curtis and Dave Curtis                | Arcangelo Rea Family Foundation                             | Beverley and Herbert Ballantyne               |
| Alfred E. H. Petrie*                                      | Arch Angelus Sturaitis and Laura Sturaitis                  | Beverley Petch*                               |
| Alice Fenn  | Archibald, Gray & McKay Ltd.                                | Beverly* and Peter Maurice                    |
| Allan J. Fox  | Architectural Conservancy of Ontario - London Region Branch | Beverly and Fred Galloway                     |
| Allan Lodberg   | Arlene and John W. Cram*                                    | Beverly and James G. Thompson                 |
| Allan Robinson  | Arlene and Terence Campbell                                 | Beverly and John A. Fowler*                   |
| Amabile Choirs of London, Canada                          | Arlene Kennedy  | Big Brothers Big Sisters of London and Area   |
| Amelia and William* Wehlau                                | Ashley Taylor   | Big V Pharmacies                              |
| Andra and Patrick O'Neill                                 | Aurelia Hernandez   | Blackburn Radio Incorporated                  |
| Andrea and Tom DeKay                                      | Averil and Stephen Eakins                                   | Bob Young                                     |
| Andrew Charabin   | Babette Blindert  | Boler Mountain                                |
| Andrina B. Carlton  | Bank of Nova Scotia   | Bonnie and Peter Regier                       |
| Angela and Norman Jonkhans                                | Barb and Jack Hyatt   | Bowes Publishers Limited                      |
| Angie and Calvin Stiller                                  | Barbara and Ian Walker-Renshaw                              | Brad-Lea Meadows Limited                      |
| Ann and Bill Fleming                                      | Barbara and John Cronyn*                                    | Brain Tumour Foundation of Canada             |
| Ann and David Spence                                      | Barbara and John Duff                                       | Brian Finch Pontiac Buick                     |
| Ann and Philip Bowman                                     | Barbara and Michael Lefcoe                                  | Bryce Holliday                                |
| Ann W. Lowry*   | Barbara and Robert Wenman                                   | Bud Gowan Clothes Limited                     |
| Anna Mae Metcalfe*  | Barbara Horne*  | Burgundy Asset Management Ltd                 |
| Annabelle and Ron* Logan                                  | Barbara Jackson   | Butler Janitorial Services                    |
| Anne and Barrie Neal                                      | Barclay Construction Hamilton Limited                       | C. F. and Barbara A. Fisher*                  |
| Anne and Donald Kershaw                                   | Beatrice and Gavin Hamilton                                 | C. & J. Wright                                |
| Anne and Douglas Alexander                                | Beaverbrook (London) Corp                                   | C. Van Wyck Laughton*                         |
| Anne and H. Robert Hayman                                 | Beehive Investments Ltd.                                    | Cambia Development Foundation                 |
| Anne and Henry (Hank) Vander Laan                         | Bell Canada   | Camille and Patrick Hodgson                   |
|   |   | Canada Trust (London) Employees' Charity Fund |



Canadale Nurseries Limited  
 Candice Thomson  
 Carol and Bud\* Johnston  
 Carol and David Walden  
 Carol Herbert and Fred Swartz  
 Carole Jones  
 Caroline L. and A. B. Conron\*  
 Catherine and Brent Holliday  
 Catherine and Gordon Sellery  
 Catherine and Hewett Littlejohn  
 Catherine and Peter Gudewill  
 Catherine Butt  
 Cathy and Donald Morphy  
 Cathy and James Dunlop  
 Cecilia and William Davies  
 Charles Sharp  
 Charlotte and James H. Little  
 Charlotte Brown\*  
 Cherie and Nick Fry  
 Childreach Centre  
 Children's Health Foundation  
 Christine and Craig Simpson  
 Christine and Richard\* Rankin  
 Church of the Transfiguration  
 CIBC Capital Management  
 CIBC Children's Foundation  
 CIBC Global Private Banking  
 CIBC Mellon  
 CIBC Wood Gundy  
 Cindy and Stuart Cottrelle  
 Citi Canada  
 City Hall Charity Chest Fund  
 Clarence\* and Marie Peterson  
 Claude and Earl Cherniak  
 Claus Anderson Photography Ltd.  
 Cold Springs Farm Limited, a Member of  
 Maple Leaf Foods  
 Colleen and Alfred\* Zettel

Colonel Charles F. Way\*  
 Community Foundations of Canada  
 Community Spirit Foundation of Western  
 Ontario  
 Compass Group Canada (Beaver) Limited  
 Comro Developments  
 Concepts in Data Management Inc.  
 Conservatory Canada  
 Copp's Buildall  
 CORE Energy London  
 County Heritage Forest Products Ltd.  
 Courtesy Ford Lincoln  
 D. Maxine Thomson\*  
 Dale Atchison Willis and Cameron Willis  
 Dan Grantham  
 Daniadown Quilts Ltd.  
 Daphne and Eric Chapman  
 Daphne and George Chorley\*  
 David and Diana Simpson  
 David and Urve Earthy and Family / Woods  
 Canada Limited  
 David Cardoso  
 David Morrison  
 David Wu  
 Dawn and Edward Ralph  
 Dawn and Errol Butler  
 Dawn and Franco Paron  
 Deanna and Bryan\* Smith  
 Debbie Acton  
 Debbie and John Sliskovic  
 Debra Parr Nash and Robert Nash  
 Decade Corporation  
 Delphine Van Dyck\*  
 Diana and Charles Coates  
 Diane and Bill Wall  
 Diane and Frank Pratt  
 Diane and James King  
 Diane and John Beattie  
 Diane and Vincent Calzonetti

Diane Y. Stewart  
 Dianne and Bill McCormick  
 Digital Echidna  
 Dillon Consulting Limited  
 Don Campbell  
 Donald Barclay  
 Donald G. Wallace\*  
 Donna and Al\* Gleeson  
 Donna and Bob Bourne  
 Donna and Tony Dagnone  
 Donna and W. Glen Sifton  
 Donna McIntosh  
 Donna Smith and Richard Ivey  
 Doreen and J. R.\* Brazier  
 Doreen and Ralph\* Duffus  
 Dorinda and Robert\* Greenway  
 Doris A. Foster\*  
 Doris and Mowbray Sifton  
 Doris Dunn\*  
 Doris Irene Spence\*  
 Doris Strathopolous  
 Dorothy and Douglas E.\* Parnell  
 Dorothy and Lloyd\* Henderson  
 Dorothy E. Airth\*  
 Dorothy Kayser\*  
 Dorothy L. Dowler\*  
 Dorothy M. Hardy\*  
 Dorothy M. Lawrence\*  
 Douglas Webber  
 Dr. and Mrs. G. G. Stewart  
 Dr. and Mrs. G.W. Manning\*  
 Dr. and Mrs. William Abbott  
 Dr. and Mrs. William C. Watson  
 Dr. Donald J. A. Wright\*  
 Dr. Elmer G. Butt\*  
 Dr. Larry Oehm  
 DuMoulin Philip\*  
 Dundas St. Centre United Church

Dwight Goertz\*  
 Earl\* and Marion Orser  
 Edith Kains\*  
 Edward Baker  
 Edward Graham Spence\*  
 Edythe M. Stewart  
 Eileen and R. W.\* Trollope  
 Elaine and David\* Brander  
 Eleanor and Jack Jung  
 Eleanor and John F.\* Graham  
 Eleanor and Melville\* Deacon  
 Eleanor and Norman\* Epp  
 Eleanor Miller  
 Eleanor N. Roberts\*  
 Eleanore C. Donnelly\*  
 Elgin Children's Foundation  
 Elizabeth and Allan Drewlo  
 Elizabeth and Edwin Carroll  
 Elizabeth and J. Allyn Taylor\*  
 Elizabeth and J. Peter Whatmore  
 Elizabeth and Jake\* Moore  
 Elizabeth and James G. Etherington  
 Elizabeth and James Hoover  
 Elizabeth and William Duffield  
 Elizabeth Harris  
 Elizabeth Robertson Ness\*  
 Elizabeth Spicer\*  
 Elizabeth Stratton\*  
 Ellen and John McKim\*  
 Elice Mitchell  
 Ellis-Don Construction Ltd.  
 Elsie Bruce  
 Emco Corporation  
 Emerson and Elisabeth\* Creed  
 Emma Ralph\*  
 Evelyn and David Stiller  
 Evelyn Bastow\*  
 Evelyn Dekeyzer\*

Evelyn J. Milner  
 Fanny and Jerry\* Goose  
 Fanshawe Pioneer Village  
 Faye and Rod Willis  
 Fidelity Investments Canada Limited  
 Florence and James Gibson  
 Florence C. Wettlaufer  
 Florence J. Buchanan\*  
 Ford Motor Company of Canada, Ltd.  
 Foyston, Gordon & Payne Inc.  
 Frances and Edmund Clark  
 Frances and J. Douglas\* Earthy  
 Frances and Samuel Lerner\*  
 Frances and William Robb\*  
 Frances Hendrix  
 Franklin Templeton Investments Corp.  
 Fred and Joan Armstrong  
 Fred Kime\*  
 Frederick L. and Sara A. Jenkins\*  
 G. Ralph Girvan\*  
 G. Toni Swart  
 Gael and William Webster  
 Gail and Peter\* Lockyer  
 Gail Yuzpe and Milt\* Goldrath  
 Gay and Robb Reynolds  
 Gayle and Terry Biehn  
 General Contractors' Section  
 General Motors Electro-Motive Division  
 George and Maxine Mills\*  
 George Linsell Foster Foundation  
 George P. Sinclair  
 Georges Lachapelle\*  
 Gerald and Violet Livingston\*  
 Gerald C. Baines Charitable Foundation  
 Geraldine and Gordon Osbaldeston  
 Gladys\* and Ronald Richardson  
 Glen\* and Alice Davis

Glenn Jones  
 Gloria and James Hales  
 Gloria and Joseph Gilbert  
 Gloria and Roy Cairncross\*  
 Gordon Lindsay\*  
 Grace and Ted Kennedy\*  
 Green Shield Canada  
 Greg Johnson  
 Gregory Playford  
 Gwendolyn and Ken Greene\*  
 H. J. Jones-Sons Limited  
 H.H.M. Scratch\*  
 Halina and Jim Bain  
 Harasym Homes Inc.  
 Hardy Mattress  
 Harris Rebar  
 Harrison G. Fraser\*  
 Harrison Pensa LLP  
 Harvey J. Bishop  
 Hastings & Aziz Limited  
 Hazel Elma Bell\*  
 Hazel M. Phillips\*  
 HBW Properties  
 Heather and Gerald Klein\*  
 Heather and Michael Lerner  
 Heather and Nicholas Russell  
 Heather Morris and Bob MacDonald  
 Helen and Andrew Spriet  
 Helen and Donald Thain  
 Helen and George Hayman  
 Helen and Gerald\* Wilson  
 Helen Dennis\*  
 Highstreet Asset Management Inc.  
 Hill Street Ad & Design  
 Homes Unlimited (London Inc.)  
 Honor and Kenneth Lemon\*  
 HSBC Asset Management (Canada) Limited

Human Resources Professionals of London  
 & District  
 Huron Davidson  
 Ian Campbell  
 IC Funding Financial Corporation  
 Ila May Stewart\*  
 Imasco Limited  
 Ina P. and David Weldon  
 Insights Inc.  
 Integrated Digital Solutions  
 Interface Centre for Oral and Maxillofacial  
 Surgery  
 International Union of Operating Engineers  
 Investment Dealers Association  
 Irene and Keith Muchan  
 Isobel M. Graham\*  
 J. Alex Richards  
 J. Marcia Gould  
 Jacqueline Farquhar and Reinhard Lohmann  
 James A. Harris Funeral Home  
 James A. Plant\*  
 James and Eva Good  
 James E. Bright\*  
 James Edwin O'Doud\*  
 James H. F. Blair\*  
 James J. Talman\*  
 James Richard Sansom  
 Jan Devereux and George VanOstrand  
 Jane A. Daniel  
 Jane and Beverley DeKay  
 Jane and Bob McMurtry  
 Jane and David Hamer  
 Jane and Donald Benson  
 Jane and Donald\* Coleman  
 Jane and J. Kenneth\* Earthy  
 Jane and Stuart F. Smith  
 Jane and William Dale  
 Janet and James Caskey

Janet and John Thompson  
 Janet and Kevin Fraser  
 Janet and R. A.\* Irwin  
 Janet and Ross Imrie\*  
 Janet E. Stewart  
 Janet Frood and Peter J. Hawke  
 Janet L. Hunten  
 Janet P. Campbell\*  
 Jean A. Smith  
 Jean and Allan Coote\*  
 Jean and Angus L.\* McKenzie  
 Jean and George Brook  
 Jean and Russell Allison  
 Jean and Stan Davies  
 Jean and Wesley Dunn  
 Jean and Wilf Feasby\*  
 Jean Bromley\*  
 Jean Eades\*  
 Jean M. Genest\*  
 Jean and Douglas Cousins\*  
 Jeanne and Syd Greenberg  
 Jennet and Daniel Sandler  
 Jennifer Dattels  
 Jennifer Gerdts and Alan Sellery  
 Jennifer Smout and Gregg Barrett  
 Jerry G. McEachern  
 Jessica Seneshen\*  
 Jim and Anna Rowcliffe\*  
 Jindal Financial Group Inc.  
 Joan and Bryan\* Walsh  
 Joan and David Grant  
 Joan and Donald\* McGeachy  
 Joan and Glenn Johnson  
 Joan and John\* Van Duzer  
 Joan and Lloyd\* Kerr  
 Joan and Peter\* Noble  
 Joan Smith  
 Joan\* and Geno Francolini

Joanne and Tony Crncich  
 Johanna Metcalf and Robert Reid  
 John A. Taylor\* and Dr. Margaret A. Kirk  
 John Bate & Co. Ltd.  
 John D. Harrison\*  
 John Dearness Public School  
 John G. Peebles  
 John H. Cox\*  
 John Heersink  
 John O'Neill  
 John Paul II Catholic Secondary School  
 John R. Dubois  
 John Schucht  
 Jonathan Rodger  
 Jonathon Bancroft-Snell  
 Jones Packaging Inc.  
 Joseph A. Rea  
 Joseph and Pamela Samuels  
 Josephine and L. D.\* Wilcox  
 Josephine and Leonard Johnson\*  
 Joy and Alec Richmond\*  
 Joy and Antony Abbott  
 Joy Roberts  
 Joyce Fleck and Harv Honsberger  
 Judith and Douglas\* McDonald  
 Judith and Gerald Wheaton  
 Judith and Wilson Rodger  
 Judith E. Blackburn  
 Judy and Benjamin Goldberg  
 Judy and Murray Bryant  
 Judy and Timothy Parnell  
 June\* and Ronald Dawson  
 June Payne  
 K & L Construction (Ontario) Ltd.  
 K. J. Muchan Planning Services & Referral (London) Inc.  
 Karen Smith  
 Karen\* and Robert Shaw

Karin Hausen  
 Katharine and William Kostuk  
 Katherine A. Smith  
 Kathleen and Frank\* Hallett  
 Kathleen Elizabeth Renwick\*  
 Kathleen McCullough\*  
 Kathleen Patchet  
 Kathleen\* and Henry Barnett  
 Kathy & Henry Berg  
 Kay and Bob Elsdon  
 Kay and Herbert Childs\*  
 Kay and Robert Bailey  
 Keith Samitt  
 Keith Thomson  
 Kellogg Canada Inc.  
 Kelly Roberts  
 Kenneth Myles Griffin\*  
 Kenneth W. Slade  
 Kevin O'Connor  
 King Animal Clinic  
 Kino Corporation  
 Kiwanis Club of Forest City - London  
 Kiwanis Club of North London  
 Krista and Jon Seabrook  
 Kristen and Colin Chisholm  
 L. Douglas Campbell  
 La Massagerie Inc.  
 Labatt Breweries of Canada  
 Labatt Breweries Ontario  
 Labatt's Ontario Breweries  
 Labour Relations Bureau of Ontario  
 Larry G. Myny  
 Larry\* and Susan Agranove  
 Laurel and Ian Hardgrove  
 Lauren and Paul Dickie  
 Lawrence McKenzie  
 Lawson Mardon Packaging (London)

Lee Myers and Phil\* Hayman  
 Leota\* and Russell Gonder  
 Lerner's LLP  
 Les Boutiques Nahtajo Inc.  
 Lever Industrial  
 Libby and Peter Fowler  
 Libby Seabrook  
 Libro Credit Union  
 Lillian C. Kroll\*  
 Lillian J. Hodgert\*  
 Lillian Rea Benson\*  
 Lily and Grant Hopcroft  
 Lilyane and Ian Moyer  
 Lina and Chris Bowden  
 Linda and Cecil Rorabeck  
 Linda and Mike Grace  
 Linda and Scott Ritchie  
 Linda and Stephen Foerster  
 Linda and William Szewczuk  
 Linda Nichol\*  
 Lindsay Kennedy  
 Linen Chest  
 Lisa and David Van Trigt  
 Lisbeth and Henry Draudt  
 Livingston Holdings Ltd.  
 Lloyd F. Stevens\*  
 Lois and Harvey Ohland  
 Lois Holiday\*  
 London and District Construction Association  
 London Arts Council  
 London Cartage & Delivery Ltd.  
 London Chamber of Commerce  
 London Downtown Business Association  
 London Fringe Theatre Festival  
 London Health Sciences Centre  
 London Health Sciences Foundation  
 London Humane Society  
 London Life Employees' SHARE Committee

London Life Insurance Co.  
 London Regional Children's Museum  
 Loretta and Donald Stevens  
 Lori and Chris Cahill  
 Lorna and Ian Anderson  
 Lorraine Ivey Shuttleworth  
 Lottie M. Brown\*  
 Louise and Gordon Thompson  
 Louise and Jack\* Speake  
 Louise and Jim Belton  
 Louise and Lindsay Somerville  
 Louise and Paul Sabourin  
 Lowell and John\* Barron  
 Lu Anne and John MacDonald  
 Lucille and Norton\* Wolf  
 Lutheran Social Services (London)  
 Lydia and Warren Blume  
 Lynda and Murray Faulkner  
 Lynn and John Graham  
 Lynn and Tom Van Beloos  
 Lynn Davis  
 Lynne and John Leitch  
 Lynne and William Gray  
 M. Adele Johnson\*  
 M. Eileen Parrish\*  
 M. Faye McLean Bass and Robert W. Bass\*  
 M.F. Arnsby Property Management Ltd.  
 Mainstreet London  
 Margaret A. and F. I.\* Hammond  
 Margaret and Bruce Hastings  
 Margaret and Carleton\* Williams  
 Margaret and David Leighton  
 Margaret and George Bowie\*  
 Margaret and Gordon\* Draper  
 Margaret and James Balfour\*  
 Margaret and John Nicholson  
 Margaret and Tom Lawson\*

Margaret and William McPhillips\*  
 Margaret C. McNee  
 Margaret Haig  
 Margaret Nisbet  
 Margi and John Nash  
 Margie and Ramsay\* Gunton  
 Marguerite and Albert\* Annen  
 Marian and J. Howard Taylor  
 Marie and John Robinson  
 Marilyn and Brent Kelman  
 Marilyn and Lucien\* Pare  
 Marilyn and Tom\* Williamson  
 Marion and Dale Creighton  
 Marion and Don McDougall  
 Marion and Don Simpson  
 Marion and Ned Elwood\*  
 Marion I. Murray\*  
 Marion Jackson\*  
 Marjorie and Brayl\* Copp  
 Marjorie L. Blackburn\*  
 Marjorie Lyons Colling and Kenneth\* Colling  
 Marjorie Rowntree\*  
 Mark Lerner and Janice Zolf  
 Marlene Miranda  
 Marna I. Blanchard  
 Marnie McArthur  
 Marny and Richard Flinn  
 Martha and John Powell  
 Martha Bishop\*  
 Martha G. Blackburn\*  
 Martyn Judson  
 Mary A. Sheridan  
 Mary and Arnold\* Stapleton  
 Mary and Darwin Semotiuk  
 Mary and Frank Pyka  
 Mary and John\* Summerby  
 Mary and Marty O'Brien  
 Mary and Norman Warner

Mary and Paul Harding  
 Mary and Peter Kryworuk  
 Mary and Roger Lillyman  
 Mary and William Bailey  
 Mary Ann and Bill Brady  
 Mary Ann and John Readings  
 Mary Ellen and Douglas Marshman  
 Mary Ellen\* and Fraser Fellows  
 Mary J. McKay\*  
 Mary J. Wright\*  
 Mary L. Tindale  
 Mary Lou Greenwood  
 Mary Lou Lafler  
 Mary Lynn and Ross Maclean  
 Mary M. Thomson  
 Mary Margaret and Gary Koreen  
 Mary Margaret Farrow  
 Mary Mason\*  
 Mary Murty  
 Masonville Place  
 Masonville Residents Association  
 Maude and John Winder\*  
 Maureen and Brian Cunliffe  
 Mayor's Task Force on Drugs  
 McCabe Promotional Advertising Inc.  
 McCarthy, Tetrault LLP  
 McCormick Canada Inc.  
 McFarlan Rowlands  
 McIntosh Gallery  
 McKay-Cocker Construction Ltd.  
 McKenzie Lake Lawyers  
 Meaghan Taylor  
 Meera Goela  
 Melba and Ernest Marr  
 Memorial Funeral Services Co-Op of London & District  
 Mercy Irene Misener\*  
 Meubles Gilles Emond

Michael Halls\*  
 Michael McDonald  
 Michelle and Adam Bain  
 Michelvincent Hair Studio  
 Michiel R. Leenders  
 Mildred and Alexander\* Maclean  
 Mildred and J. Paul\* Cutsey  
 Mildred and John Russell  
 Milisa and Andrew Burns  
 Milton Charles Broderick\*  
 MIM Wealth  
 Mimi and Theodore Lo  
 Minister of Canadian Heritage and Status of Women  
 Miss A. M. Hughes  
 Mitchell Kravitz  
 Moira and Robert Sansom  
 Mollyann and T. William\* Johnstone  
 Monica and Harbir Chhina  
 Montcalm Secondary School  
 Morley Faulds\*  
 Morphy Containers Limited  
 Mr. Albert Thornton\*  
 Mr. and Mrs. Benjamin Cozens  
 Mr. and Mrs. Bogdan\* Popovic  
 Mr. and Mrs. C. M. Willoughby\*  
 Mr. and Mrs. Daniel R. Ross  
 Mr. and Mrs. Del L. McLennan  
 Mr. and Mrs. Doug W. Lambert  
 Mr. and Mrs. Drew Wallace  
 Mr. and Mrs. Gordon W. Benson\*  
 Mr. and Mrs. Hume Cronyn  
 Mr. and Mrs. John J. Eberhard  
 Mr. and Mrs. John J. Kime  
 Mr. and Mrs. Mervin J. McGuffin\*  
 Mr. and Mrs. Murrough O'Brien\*  
 Mr. and Mrs. Philip S. Thornton

Mr. and Mrs. R. B. Thomas  
 Mr. C. V. Minor  
 Mrs. Elizabeth Zurbrigg\*  
 Mrs. Ercel H. Robison  
 Mrs. Isabel Hodgkinson\*  
 Mrs. Lois Orr\*  
 Mrs. P. Cameron  
 Ms. K. Anne Brander\*  
 Ms. Nancy F. McNee\*  
 Mukul Goela  
 Muriel McGuire\*  
 Murray Hunter  
 Murray Wilson  
 Museum London  
 Myra and Merv Lahn\*  
 Nancy and Cornelius O'Connor  
 Nancy and Gerald Wright  
 Nancy and Keith Sumner  
 Nancy and Ronald Passi  
 Nancy and Steve Tilk  
 Nancy J. Chisholm  
 Nancy Jane and Jack\* Coups  
 Natural Resource Gas Ltd.  
 Nechako Investments Ltd.  
 Nelco Mechanical Limited  
 Nell and Ian\* Haldane  
 Netta Brandon\*  
 Nettie and Leonard Shankman\*  
 New Nahant Country Club  
 Nexen Inc.  
 Nicholson Sheffield Architects Inc.  
 Nirvana Home Collection  
 Nora Olden McCausland\*  
 Norah Parker Beattie\*  
 Norma and Keith Bice\*  
 Norma and Richard Brock  
 Norman Burdick\*  
 North Pole Trim & Supplies Ltd.



NPT Wealth Management  
 Nunn's London Ltd.  
 Oak Trust Company  
 Oakridge Optimist Soccer Club  
 Old Masonville Ratepayers Association  
 Old Oak Properties Inc.  
 Old South Community Organization  
 Ontario General Contractors Association  
 Ontario Registered Music Teachers' Association  
 O-Pee-Chee Company Ltd.  
 Oracle Service Networks Corporation  
 Orchestra London Canada Inc.  
 Pacific & Western Bank of Canada  
 Pascale Daigneault and Carl Fleck  
 Patricia and Charles Robert\* Townshend  
 Patricia and Dennis\* Silverthorne  
 Patricia and James Rudder\*  
 Patricia and John\* Brown  
 Patricia and Maxwell Morden  
 Patricia and Robert\* McFarlane  
 Paul and Bernadette Wainwright  
 Paul Clifford Adams Medicine  
 Pauline and Darrel Skidmore  
 Pauline Faust\*  
 Penney and Peter\* McCain  
 Penny and Michael Eizenga  
 Peter and Jennifer Dillon  
 Peter G. White  
 Phil Vachon  
 Philippa and Eric Pemberton\*  
 Phillis M. Clark\*  
 Phyllis R. Gunn\*  
 Pillar Nonprofit Network  
 PricewaterhouseCoopers  
 Pride Art Show  
 Pride London Festival  
 R. C. Webster

R. Howard Webster Foundation  
 R. Margaret Walker\*  
 Raegan Kennedy  
 Ranic Developments Inc.  
 RBC Dominion Securities Inc.  
 RBC Foundation  
 ReForest London  
 Reginald Lamon\*  
 Reta and Harold Minshall\*  
 Rice/Traut Athletic Award  
 Richard A. Costley-White  
 Richard Walling  
 Rick and Carol Richardson  
 Rita and Shannon Sanborn  
 Rita and Tutis Vilis  
 Robco Inc.  
 Robert and Alexandra Kayser  
 Robert and Elaine Dowler  
 Robert Badun and Eileen Gillese  
 Robert G. E. Murray  
 Robert H. Forbes  
 Robert J. M. Lockhart  
 Robert Killeen\*  
 Robert Watson  
 Robin and John Armistead  
 Robyn Kennedy  
 Roger and Elizabeth Macaulay\*  
 Rogers Communications Inc.  
 Rogers Group Of Companies  
 Roger's Sleep Shop  
 Ronald\* and Helen Hinton  
 Rosalind Jones\*  
 Rosamond and Josiah Norris\*  
 Rose M. Beretta\*  
 Rose Marie Jaco  
 Rose Olley\*  
 Rosemary and Stuart Dickinson  
 Ross Dilling

Rotary Club of London  
 Roxanne and Andrew McClenaghan  
 Roy T. Cottier\*  
 Royal Bank Financial Group Foundation  
 Royal Bank of Canada  
 Royal Canadian Big Band Festival  
 Royal Trust Corporation of Canada  
 Russell G. Stephens\*  
 Ruth and David Werezak  
 Ruth and Edwin Jarman\*  
 Ruth and John Fitzgerald\*  
 Ruth and Steve Wilson  
 Ruth Gates-Jensen and Ben Jensen  
 Ruth\* and Howard S. Cameron  
 S. Hazel Francis\*  
 Sam Katz\*  
 Sandra and Blake Nicolucci  
 Sandra and James McCabe  
 Sandra McNee  
 Sandy Levin  
 Sarah and Archie Marcus\*  
 Sarah and Basil Kelly  
 Sari and Sydney Vaisler\*  
 SARI Therapeutic Riding  
 Save Reservoir Hill Association  
 Sceptre Investment Counsel Limited  
 Sean McKillop  
 Seanna and Charles Ross  
 Senton Incorporated  
 Sharon and Brian Lessard  
 Sharon and Norman Puhl  
 Sharon and Vito Finucci  
 Sheffar Potter Muchan Inc.  
 Sheila and Donald Johnson  
 Sheila and Robert Mizak  
 Shelly and Bob Siskind  
 Shirley and Arthur Currie  
 Shirley and David\* Gunn

Shirley and Ken Willoughby  
 Shirley and Tom\* Mitchell  
 Shirley Powell\*  
 Shmuel Farhi  
 Shoppers Home Health Care  
 Sian and William S.\* Scott  
 Siemens VDO Automotive Inc.  
 Siskinds LLP  
 Skyhawk Steel Construction Ltd.  
 Southwest Tractor  
 Spectrum United  
 Spencer Steel Limited  
 Spriet Investments Inc.  
 St. George's Church  
 St. Joseph's Health Care London  
 St. Paul's Cathedral  
 St. Paul's Social Services  
 Stark Warehouse Ltd.  
 Steelaway Investments INC.  
 Stephen N. Adams Q.C. and Linda Frosst Adams  
 Stewart Glass  
 Stilco Investments Limited  
 Stoneybrook Heights/Uplands Residents Association  
 Strategic Charitable Giving Foundation  
 Stuart and Jeannette Eberhard  
 Sue and Baxter Willis  
 Sue and Charles A. Thompson\*  
 Sue and R. Thomas\* Allan  
 Sue and Stan Martin  
 Susan and Allan Edwards  
 Susan and Bernie Bierbaum  
 Susan and Bill Ruth  
 Susan and Harold Merskey  
 Susan and John W. D. McDonald  
 Susan and Larry Riggan  
 Susan and Lawrence Patrick

Susan and Maurice H.\* Genest  
 Susan and Michael O'Connell  
 Susan and Ron Holliday  
 Susan E. Ryans  
 Susan J. Vonesh\*  
 Suzanne and John Kaufmann\*  
 Suzanne and Michael Tucker  
 Suzanne and Paul Manders  
 Sylvia Novak\*  
 T.W. Johnstone Co. Limited  
 Tara and David Suzuki  
 Tara Kennedy  
 TD Canada Trust  
 TD Wealth Private Client Services  
 Tempur Canada  
 Tempur-Pedic, Inc.  
 Terri and John Kennedy  
 Terry and Doug Zavitz  
 Terry and Mark R. Wilson  
 Terry L. West  
 Thames Talbot Land Trust  
 Thames Valley District School Board  
 The Canadian Medical Hall of Fame  
 The Chapman Group  
 The Corporation of the City of London  
 The Drake Foundation  
 The Executive Type, Canada Trust  
 The Fleck Family Foundation  
 The General Contractors Association of Hamilton  
 The Grand Theatre  
 The Haines Family  
 The Harbinger Foundation  
 The Irish Canadian Chamber of Commerce  
 The J.W. McConnell Family Foundation  
 The John Hayman & Sons Company, Limited  
 The Kitchener and Waterloo Community Foundation

The Lawson Foundation  
 The Mitchell and Kathryn Baran Family Foundation  
 The Ontario Trillium Foundation  
 The Patrick Hodgson Family Foundation  
 The Richard and Jean Ivey Fund  
 The Richard Hawkins Corp.  
 The Richard Ivey Foundation  
 The Sisters of St. Joseph of the Diocese of London  
 The Springdale Foundation  
 The United Church of Canada Foundation-Mary/Norman Warner  
 The Urban League of London  
 The Walter J. Blackburn Foundation  
 The Whiteoaks Group  
 The Women's Directory  
 Therese Saddy  
 Thomas and Madeline Lennon  
 Thomas C. Lawson\*  
 Thomas G. Whealy  
 Thomas Gosnell\*  
 Thomas Leslie Borrowman Hoskin\*  
 Tim Lawson  
 Tima Bansal and David Michael Riley  
 Timothy Carey  
 Todd and Stacey Townshend  
 Tom Logan  
 Tom Stewart  
 Tork Hillary  
 Toronto Dominion Bank  
 Tout Pour Le Dos  
 Trevor Bond  
 Triax Capital Corporation  
 Tricar Developments Inc.  
 Trojan Technologies Inc.  
 Trudell Medical Limited  
 Trudy and John Meyer  
 TSC Stores Ltd.

Turnay Electric Ltd.  
 Tyrone Traher  
 Unifin International Inc.  
 Union Gas Ltd.  
 United Way London & Middlesex  
 University Hospital Foundation  
 Valerie Richards  
 Valorie and David Scatcherd  
 Verna Pierce  
 Vicki and John Bisset  
 Victoria and Gordon Drimmie  
 Vimla and Kulwant Bansal  
 Vivian\* and Douglas Bocking  
 W. Edwin Jarman  
 W. G. Fisher\*  
 W. H. Loyens Construction  
 Walter and Duncan Gordon Foundation  
 Walter Duffield  
 Wastell Builders Inc.  
 Wendy and Archie Leach  
 Wesley-Knox United Church  
 Western University Students' Council  
 Westminster College  
 Westminster Township Historical Society  
 William and Elsie Laing\*  
 William and Lucy Book  
 William C. Heine and Vivian N. Heine\*  
 William C. McConnell  
 William C. Wingrove  
 William F. MacKay  
 William H. Brown  
 William M. Campbell  
 William Proudfoot House  
 William\* and Nancy Poole  
 Wilma Stanley  
 Winifred and David Wake  
 Wolverine Tube (Canada) Inc.

Wood Gundy Charitable Foundation  
 Woodfield Community Association  
 Woods Canada Limited  
 Y-Macette Club  
 YMCA of Western Ontario  
 Z Group  
 Zavitz Insurance Inc.

### Memorial Gifts

Brenden R. Andreozzi  
 Olga Badiuk  
 John Barron  
 Ruth T. Coghill  
 Lydia Collins  
 Patrick A. Curran  
 June R. Dawson  
 T. S. Eakins  
 David G. Evans  
 Megan Holliday  
 Brenda MacKay  
 John McCamus  
 Edna B. McLean  
 Tom Mitchell  
 Jennifer Mott-Mifflin  
 Susan B. Nieuwenhuizen  
 Cornelius O'Connor  
 David Richards  
 Martin L. Robinson  
 John H. Speake  
 Janet Thompson  
 Faith Tilk  
 Roberta L. Turner  
 Antonina Upenieks  
 Chandrika Venkatesan  
 John B. Walker  
 Dulcie Williams  
 Alfred Zettel

### Honour Gifts

Murray Faulkner  
Fred Galloway  
Victor Harris  
Patrick T. O'Neill  
Dorothy Parnell  
Douglas E. Parnell  
Gordon R. Sellery  
Robert G. Siskind  
Mary M. Thomson  
Catherine D. Urquhart

### Members of the Lorraine Ivey Shuttleworth Society

*Recognizes donors who have made a bequest or life insurance gift to London Community Foundation.*

Alexander Fetterly and Michelle Hall

#### Ann McCol Lindsay and David Lindsay

Beth and David Girvan  
David Heath Foundation  
Diane Y. Stewart  
Donna and Al\* Gleeson  
Donna and Bob Bourne  
Estate of Geoffrey L. Parkins  
Estate of Harriet Ripley Saunders  
Estate of James E. Bright  
Estate of Peter R. Noble  
Estate of R. Thomas M. Allan  
Estate of S. Hazel Francis  
Estate of T. Brayl Copp  
Evelyn J. Milner  
Frances and John C. Nash  
Fred Lamport  
Gordon and Victoria Drimmie  
Gordon Sellery

Harvey and Pat Burton

James G. Thompson

Janet E. Stewart

Jean A. Smith

Jean and Stan Davies

Joan Van Duzer

John William Fansher

Karen and James Moffat

#### Kobe Kwabena Adu-Poku

Larry G. Myny

Laurel Hardgrove

Lucille and Norton P.\* Wolf

Marni Williamson

Mary Margaret and Gary Koreen

Mildred and J. Paul\* Cutsey

Nancy and Gerald Wright

Nancy Houghton-Larue and Robert Larue

Nancy and Keith Sumner

Richard M. Ivey

Robert H. Forbes

Roberta and Jon Hall

Ronald and Helen Hinton

Ronald Dawson

Shirley and Arthur Currie

Shirley and Gary West

Sian and William S.\* Scott

Stephen A. Hayhurst

Susan and Allan Edwards

Susan and Larry\* Agranove

Susan Wetmore

Suzanne McDonald Aziz

Suzanne P. Allan

Terry and Mark R. Wilson

William and Marian Bieman

### Estate Gifts

#### Estate of Alec Richmond

Estate of Alfred E. H. Petrie

Estate of Angus L. McKenzie

Estate of Anna Mae Metcalfe

Estate of Anne H. Ames

Estate of Anne Louise Haslett

Estate of Barbara and John Cronyn

#### Estate of Barbara J. Sherlock

Estate of Bernard Wolf

Estate of Beverley Petch

Estate of Beryl Ivey

Estate of Donald G. Wallace

Estate of Doris Evelyn Dunn

Estate of Dorothy Annabel Kayser

Estate of Dorothy E. Airth

Estate of Dr. William Philip Hayman

Estate of Edith Kains

Estate of Edward Graham Spence

Estate of Edwin Milton Cralford Kearn

Estate of Elizabeth Robertson Ness

Estate of Elizabeth Spicer

Estate of Evelyn May Bastow

#### Estate of George and Maxine Mills

Estate of Gloria and Roy Cairncross

Estate of Gordon Lindsay

#### Estate of Gwendolyn B. Greene

Estate of Harrison G. Fraser

Estate of Hazel Elma Bell

Estate of Hazel M. Phillips

Estate of Isabel Hodgkinson

Estate of J. Allyn Taylor

Estate of Jack Coups

Estate of James Edwin O'Doud

Estate of James G. Balfour

Estate of James H. F. Blair

Estate of Janet P. Campbell

Estate of Jean Bromley

Estate of Jean Eades

Estate of John H. Cox

#### Estate of Joyce Marguerite Miller

Estate of Kathleen Elizabeth Renwick

Estate of Kathleen McCullough

Estate of Kenneth Myles Griffin

Estate of Lillian Hodgert

Estate of Lillian Rea Benson

Estate of Linda Nichol

Estate of Lottie M. Brown

Estate of M. Adele Johnson

Estate of Margaret Eileen Bowie

Estate of Maurice H. Genest

Estate of Mercy Irene Misener

Estate of Michael G. Halls

Estate of Milton Charles Broderick

Estate of Morley Faulds

Estate of Mr. Albert K. Thornton

Estate of Mrs. Elizabeth Zurbrigg

Estate of Mrs. Lois Orr

Estate of Mrs. Mary J. McKay

Estate of Muriel Anne McGuire

Estate of Nora Olden McCausland

Estate of Norah Parker Beattie

Estate of Pauline Faust

Estate of Philip A. DuMoulin

Estate of Robert Killeen

Estate of Rosalind Jones

Estate of Rose Olley

Estate of Susan J. Vonesh

Estate of T. William Johnstone

Estate of Thomas Leslie Borrowman Hoskin

Estate of William C. Heine and Vivian N. Heine

# 2014 Board, Committees & Staff

## Thank You!

### Honourary Directors

Richard M. Ivey, Honourary Director  
Lorraine Ivey Shuttleworth, Honourary Director

### Board of Directors

Patrick O'Neill, Chair  
Fred Galloway, Vice Chair  
Donna A. Bourne, Past Chair  
Joni Baechler  
Tima Bansal  
Peter Dillon  
Murray Faulkner  
Stephen Foerster  
Vic Jindal  
Tony Kyle  
Ron Mikula  
John Mockler  
Glen Pearson  
Greg Playford  
Jill Wright

### Advisory Council

Bill Brady  
Jeannette Eberhard  
M. Lee Myers  
Barrie Neal  
John Nicholson  
Judith Rodger  
Robert Siskind  
Diane Y. Stewart  
Janet Stewart  
Cal Stiller  
Gordon Thompson  
Lucille Wolf

### Finance and Audit Committee

Ron Mikula, Chair  
Sandy Levin  
John Mockler  
Geoffrey C. Pullford  
Janis Stuart  
Peter Whatmore  
Dale Zorgdrager

### Grants Committee

Tony Kyle, Chair  
Mary Ann Colihan  
Helen Connell  
Ian Dantzer  
Kevin Dixon  
Murray Faulkner  
Laurie Lashbrook  
Madeline Lennon  
Nicholas Spence

### Investment Committee

Vic Jindal, Chair  
Stephen Foerster  
Joaquim Balles  
Heather Broadhead  
Joe Goverde  
Mike Jaczko  
Paul Manders  
Jan Pryde

### Leadership Development Committee

Murray Faulkner, Chair  
Peter Dillon  
Teji Dhami  
Julie Elgie  
Franco Paron  
Jill Wright

### Social Finance Committee

Joel Adams  
Joan Atkinson  
Tima Bansal  
Joni Baechler  
Lina Bowden  
Nathan Ferguson  
Greg McQueen  
Greg Playford  
Glen Pearson  
John Nicholson

### Staff

Martha Powell, President & Chief Executive Officer  
Vijay Venkatesan, Director of Finance & Administration  
Diane Silva, Director, Donor Relations  
Lori Runciman, Manager, Community Initiatives  
Vanessa Dolishny, Manager, Communications & Donor Relations  
Ulyana Kordyuk, Office Administrator  
Cathy Dunmore, Finance & Administrative Assistant



**LCF Staff from left:** Lori Runciman, Manager, Community Initiatives; Diane Silva, Director, Donor Relations; Vanessa Dolishny, Manager, Communications & Donor Relations; Martha Powell, President & Chief Executive Officer; Vijay Venkatesan, Director of Finance & Administration; Cathy Dunmore, Finance & Administrative Assistant; Ulyana Kordyuk, Office Administrator



# Thank you to our 2014 Board



**Front row (from left):** Joni Baechler, Greg Playford

**Middle row (from left):** Ron Mikula, Tony Kyle, Jill Wright, Donna Bourne, Patrick O'Neill

**Back row (from left):** John Mockler, Vic Jindal, Peter Dillon, Fred Galloway, Murray Faulkner, Martha Powell





# Want to drive change? Invest in your community today!

For more information on how you can have an impact on your community,  
contact London Community Foundation.

519-667-1600 or [info@lcf.on.ca](mailto:info@lcf.on.ca)



SMART & CARING  
COMMUNITIES



COMMUNITY  
FOUNDATIONS  
OF CANADA

London Community Foundation | Covent Garden Market | 130 King Street, London Ontario N6A 1C5

t: 519.667.1600 f: 519.667.1615 | e: [info@lcf.on.ca](mailto:info@lcf.on.ca) | tw: [@LdnCommFdn](https://twitter.com/LdnCommFdn) | w: [www.lcf.on.ca](http://www.lcf.on.ca)