

# City of Birmingham

*"Connecting our neighborhoods to opportunities"*

## Bus Rapid Transit



BIRMINGHAM  
BRT

Connecting Our Neighborhoods to Opportunities

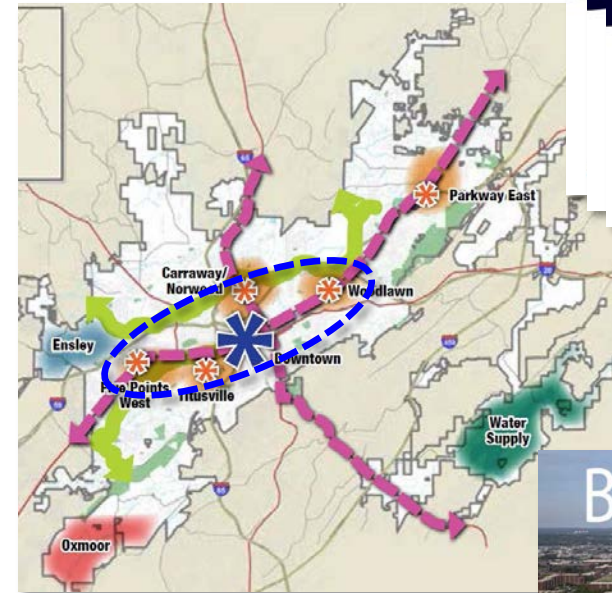
Project Review  
October 25, 2018



# Birmingham BRT Background

## Project Goals:

1. Connect Birmingham's Neighborhoods to Opportunities
2. Improve Mobility and Access to Jobs and Opportunities for Minority and Low In-come Residents
3. Complement and Encourage Community Reinvestment
4. Improve Birmingham's Public Transportation Network and State of Good Repair
5. Provide a Foundation for Special Events Transportation including The World Games 2021



# WHAT IS BRT?

## LIGHT RAIL ON TIRES

Bus Rapid Transit (BRT) is one of the technologies that could be used to implement Rapid Transit Service in key, heavily traveled corridors. BRT is essentially light rail on rubber tires - offering almost identical services features and characteristics as light rail, but with a significantly lower cost. BRT is intended to move large numbers of people quickly and efficiently to their destinations.

### FAST AND RELIABLE SERVICE

Dedicated lanes and signal priority

Could run as frequently as every 5 minutes

Stops every 1/2 mile to 1 mile (*less frequently than local bus*)

Real time travel information

### CONVENIENT

Level boarding

Off-board fare collection

Multiple doors for quick boarding

### MODERN

Vehicles are often longer articulated and specially designed

Latest energy efficient technologies

### COMFORTABLE

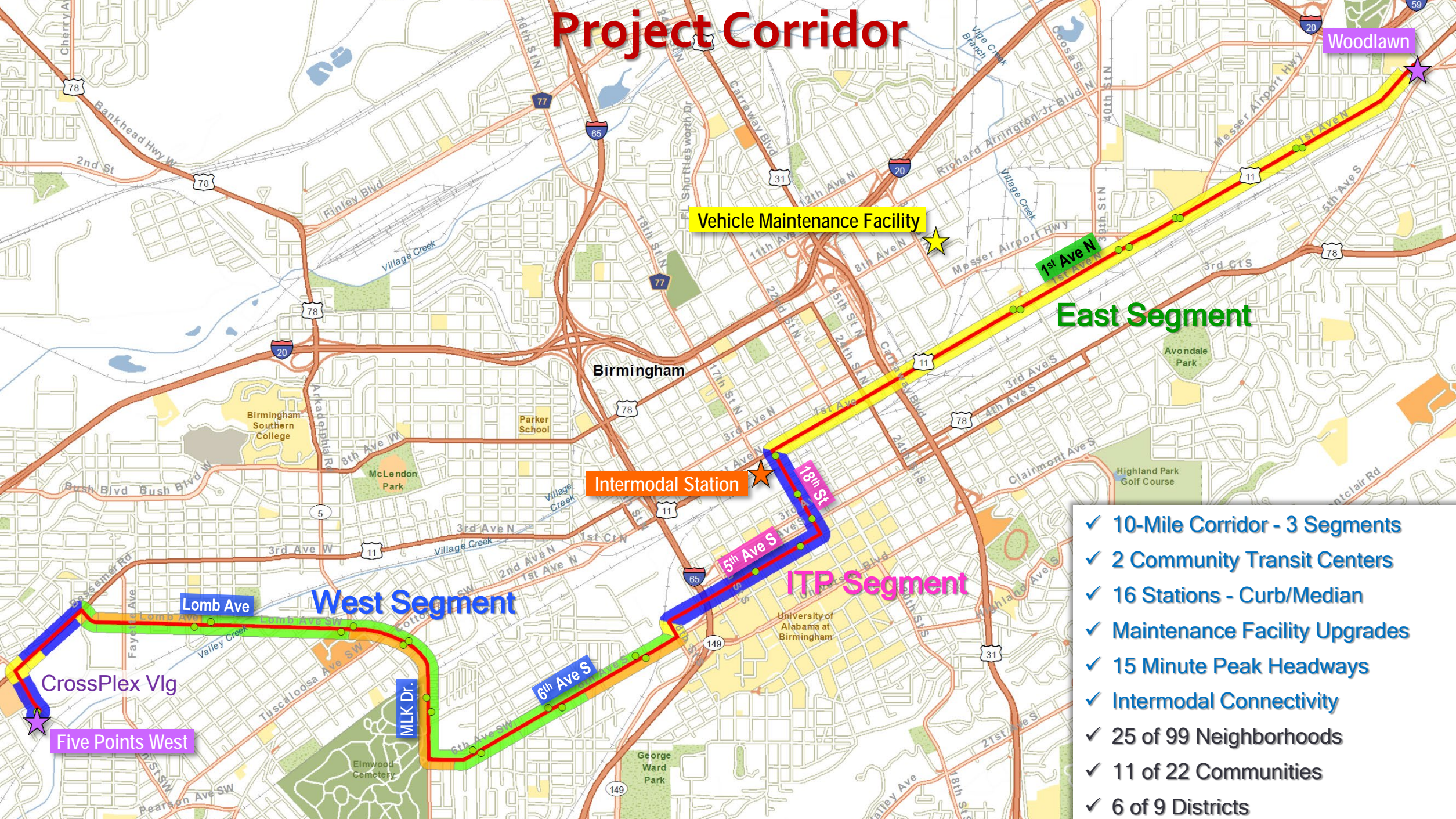
Spacious and comfortable interiors

Enhanced stations (*not stops*)

Amenities like Wi-Fi, bike racks, benches

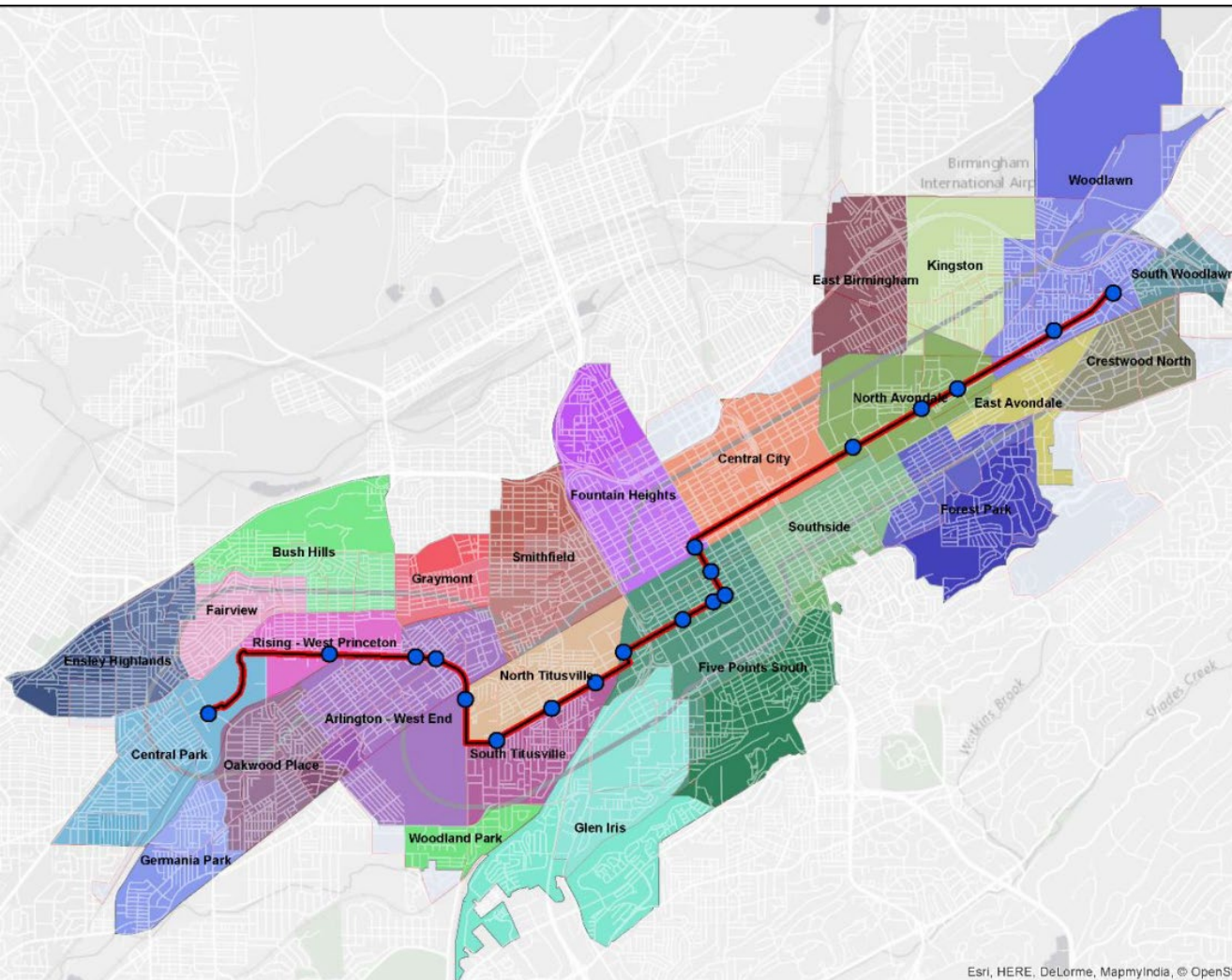


# Project Corridor



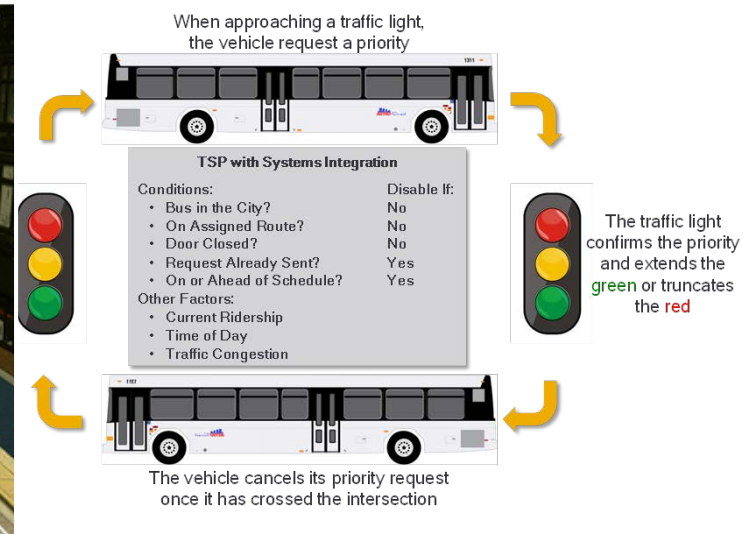
- ✓ 10-Mile Corridor - 3 Segments
- ✓ 2 Community Transit Centers
- ✓ 16 Stations - Curb/Median
- ✓ Maintenance Facility Upgrades
- ✓ 15 Minute Peak Headways
- ✓ Intermodal Connectivity
- ✓ 25 of 99 Neighborhoods
- ✓ 11 of 22 Communities
- ✓ 6 of 9 Districts

# Corridor Demographics



- 25 of 99 neighborhoods
- 21% of City population are within 1/2-mile walking distance
  - ~48k residents
  - 1/3 are low income (City is 26% - double national average)
  - 71% are minorities (City 79%)
  - 22% lack access to automobile (City 14%)
- 5 largest employers:
  - UAB
  - UAB Health Services
  - Regions Financial Corp
  - St Vincent Health System
  - City of Birmingham
- Access to 125k jobs (compared to 163k Citywide)
  - 70k (54%) with 5 largest employers
- Connectivity thru Central Station (Intermodal)
- Opening day ridership forecast: 3,120 daily passenger trips

# Birmingham BRT Features



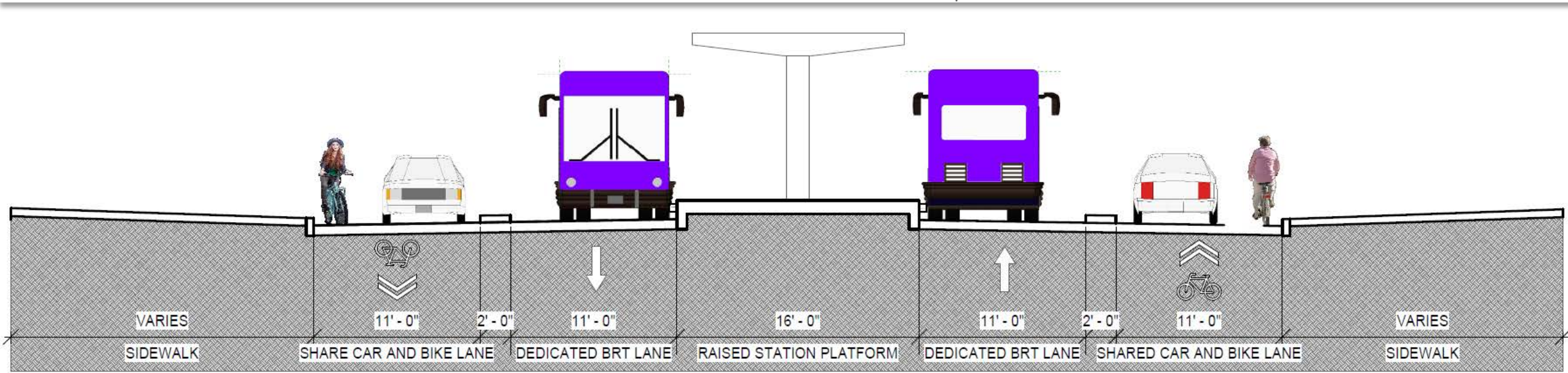
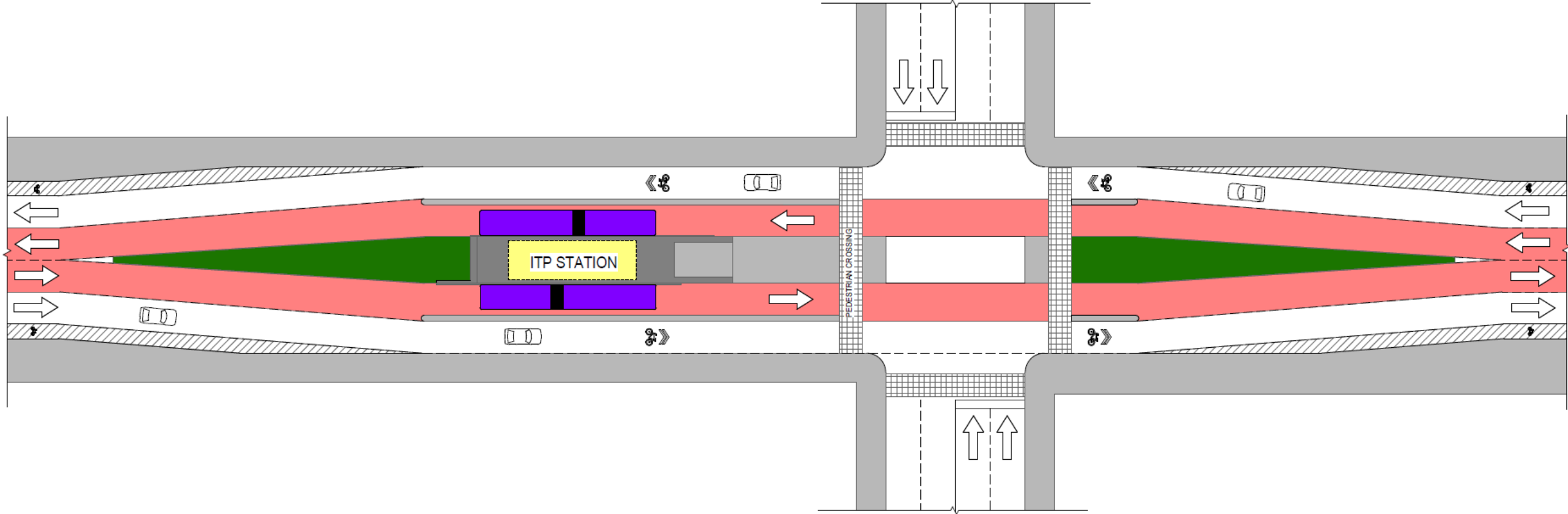
# BRT Sustainability

Here are 200 people in 177 cars



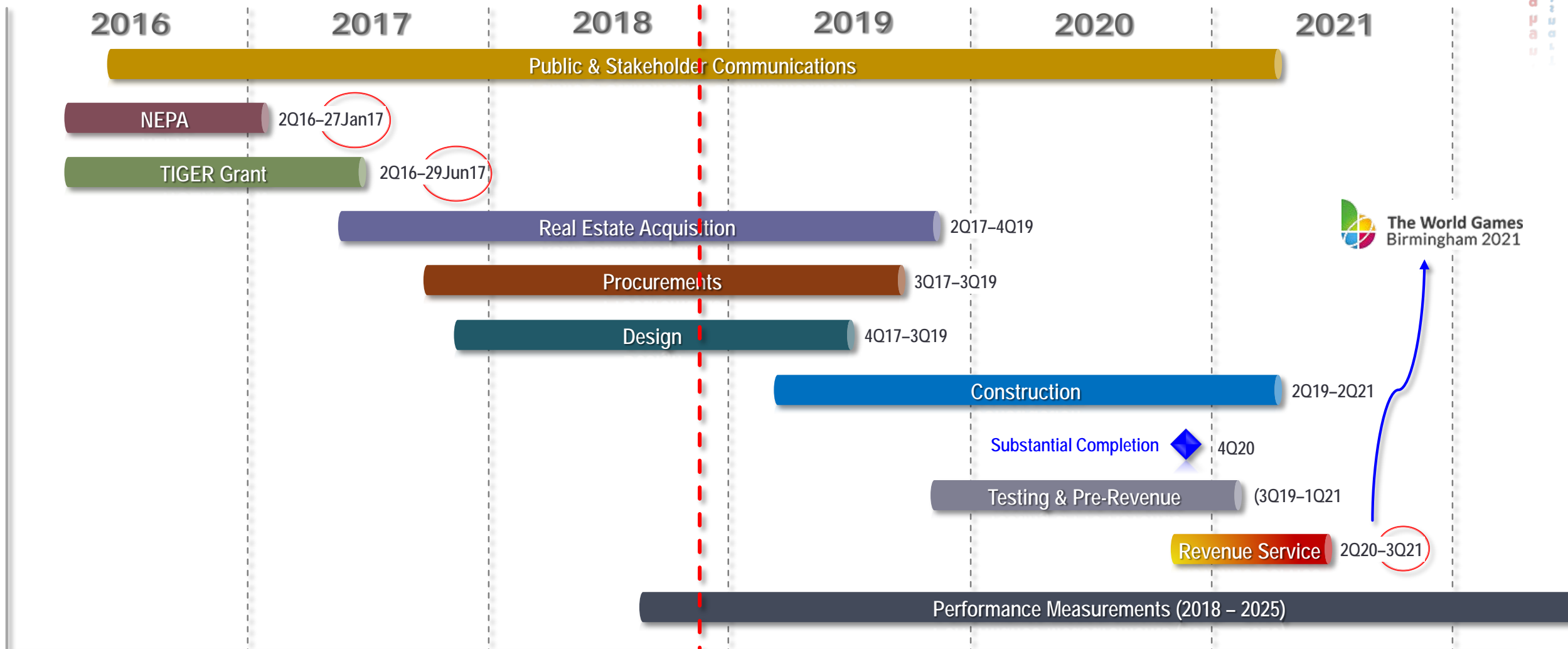
on 3 buses



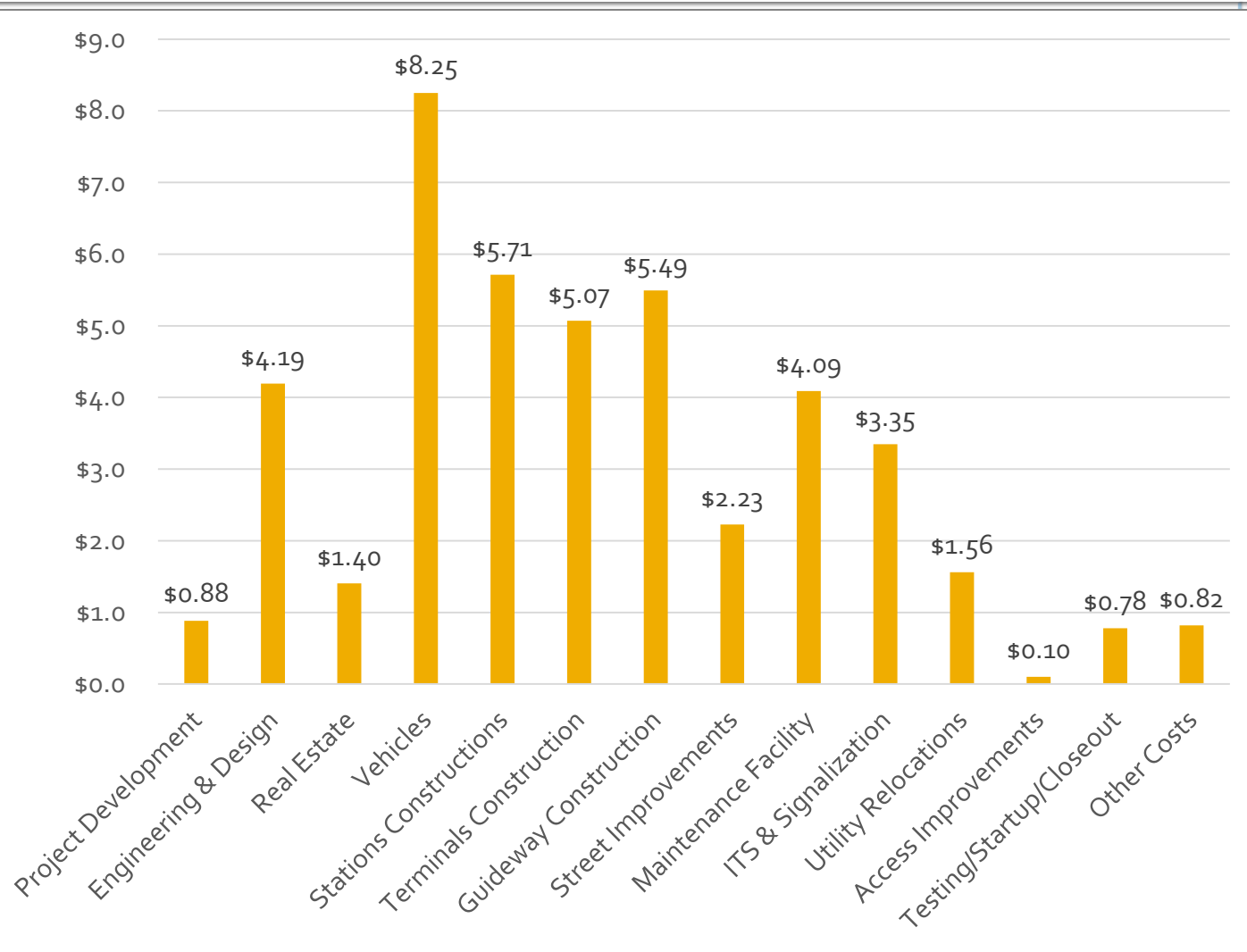




# High-Level Schedule



# Budget & Funding





# Next Steps

## ■ Planning

- Complete Traffic Studies
- NEPA Reevaluation
  - *Targeted Outreach*
  - *Submit NEPA Checklist*
  - *Other Activities As Required*
- FTA White Paper

## ■ Procurements

- Award 5 Pts. West Station A&E Services
- Complete Bus Procurement
- RFP's
  - Vehicle Maintenance & Storage Facility
  - Passenger Information & Communication Systems
  - Corridor Signage & Wayfindings

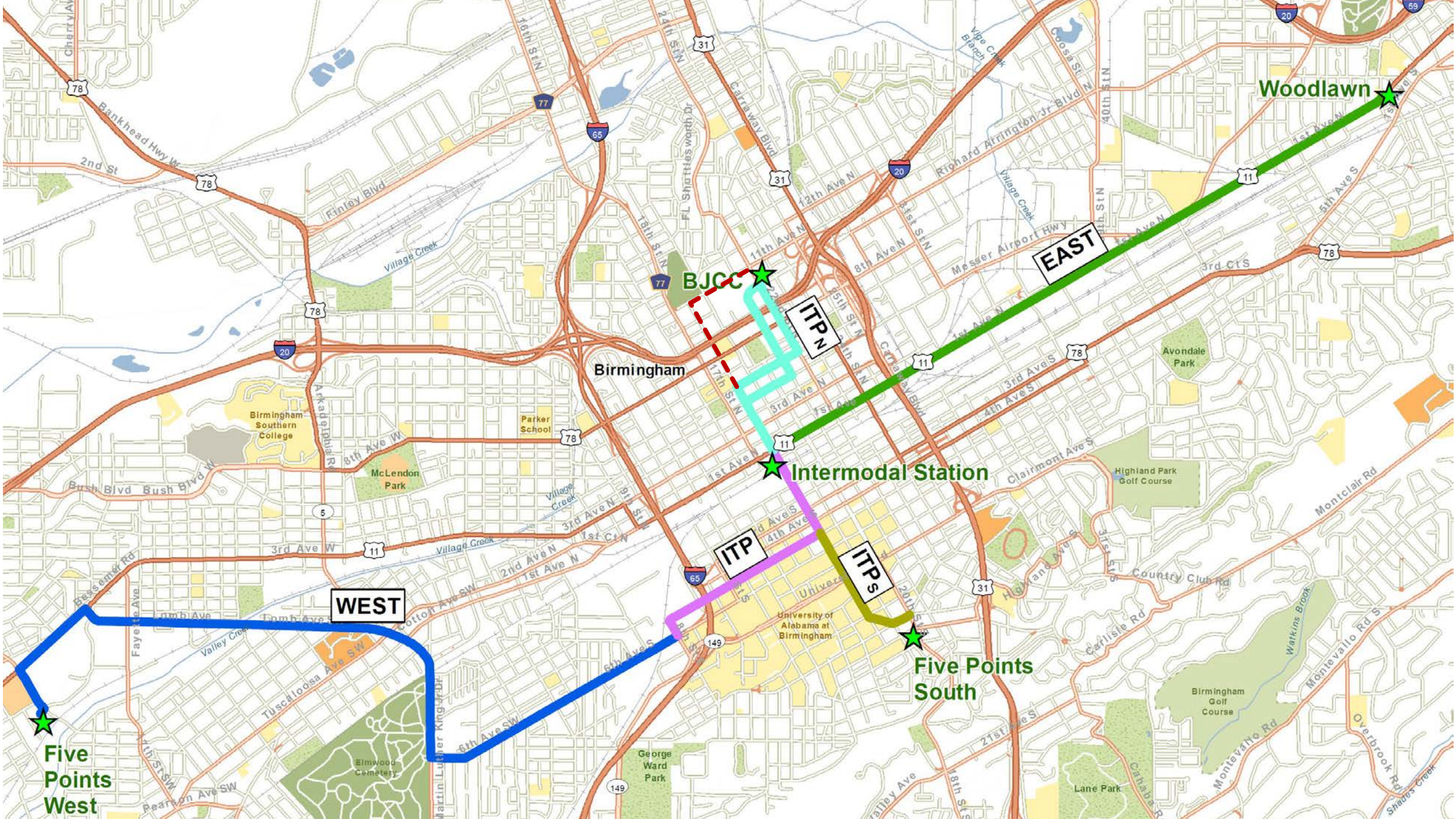
## ■ Design

- Complete Corridor Surveying
- ITP Median Stations 30% Design
- East & West Stations 30% Design
- Woodlawn Station Design
- Guideways & Roadways Preliminary Layout
- Utility Coordination

## ■ Other Activities

- Performance Measures Data Collection
- Branding
  - Name
  - Colors
  - Logo





Five Points West

WEST

ITP

ITP S

BJCC

ITP N

EAST

Woodlawn

Birmingham

Intermodal Station

Five Points South

**City of Birmingham**

***"Connecting our neighborhoods to opportunities"***

**Bus Rapid Transit**

<https://www.birminghamal.gov/brt>

**Howard G. Richards. P.E., MBA, CPIM**

Deputy Director/Birmingham Rapid Transit Program Manager

Capital Projects Management Office