

A few notes about PDF patterns. . . .

This PDF pattern prints on regular letter size paper (8.5" x 11").

Patterns containing larger pieces will need to be taped together before cutting out the fabric.

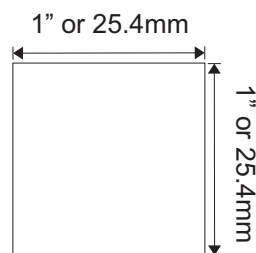
Be advised that this document needs to be printed to it's original scale. Please ensure that the printing options below are **not** selected.

Do Not: Rotate and Center, Fit to Page, Reduce to Fit or adjust the scale of this document.

Refer to the scale marker below to ensure that this copy is printed at the correct scale.

This PDF pattern is not licensed for commercial use and may not be shared, duplicated or distributed.

2021 Designs by Jude/VDC, All RIGHTS RESERVED. Personal use only. Not licensed for commercial use.



Designs by Jude

www.fletcherpatterncompany.com



VDC Club Grace
Noteworthy Style
for 16.5" RTB101 Dolls



Designed by
Tamara Casey



VDC Club Grace Collaboration

Noteworthy Style

For RTB101 Body Dolls

Fabric: Light weight woolens, crepe, gabardine or similar
Lining: Cotton, poly, silk essence
Notions: 7" Doll zipper, matching thread, 2 4/0 snap sets

Achieve professional results by following a few rules:

1. Press garment as you work through each step. Press seams open.
2. Tie darts and other loose ends of thread off, rather than backstitching.
3. Use a small stitch and clip seams close to stitches to reduce bulk.

Dress

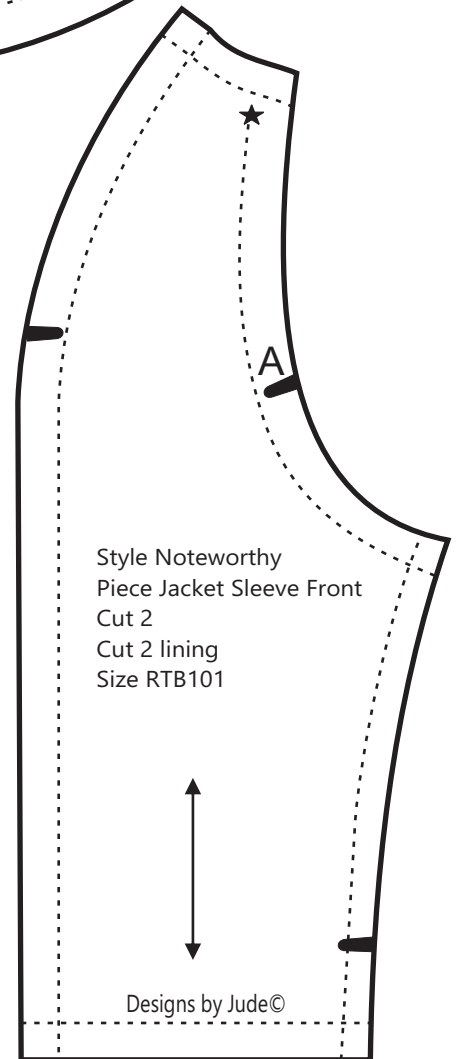
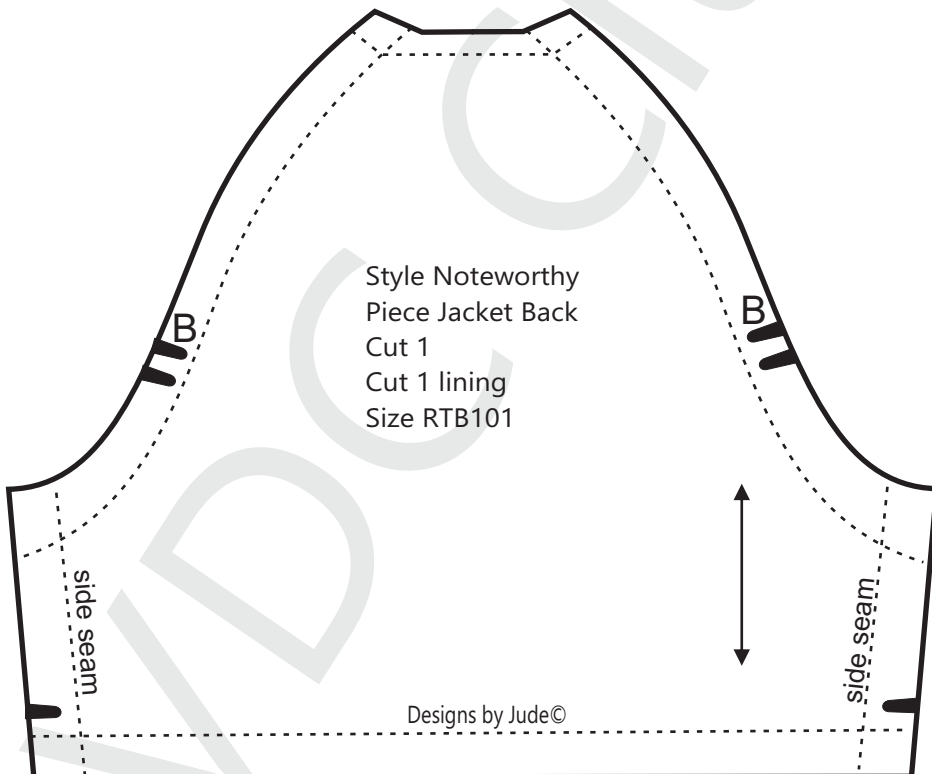
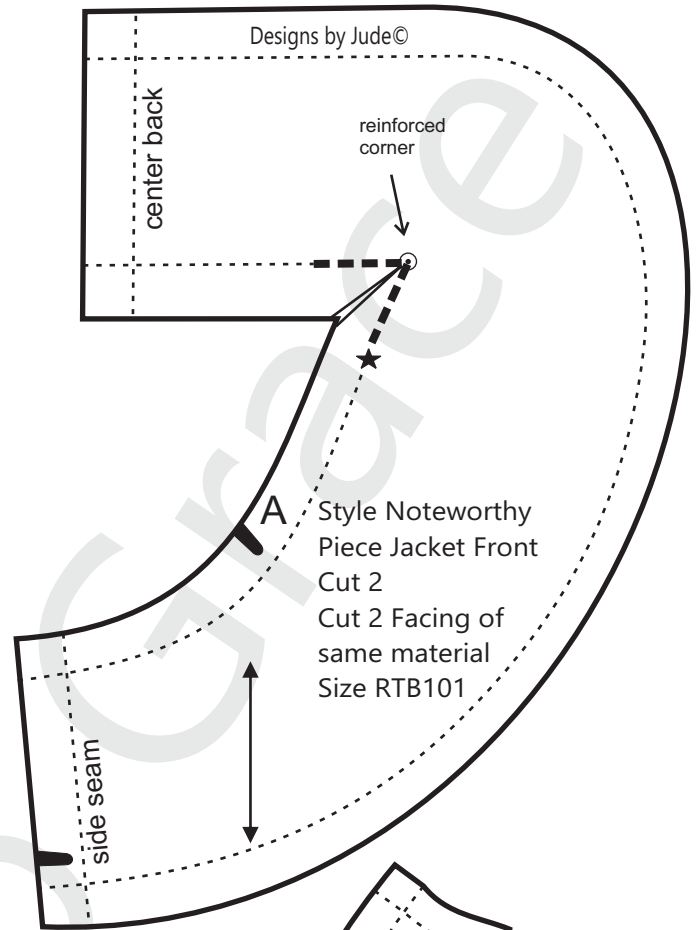
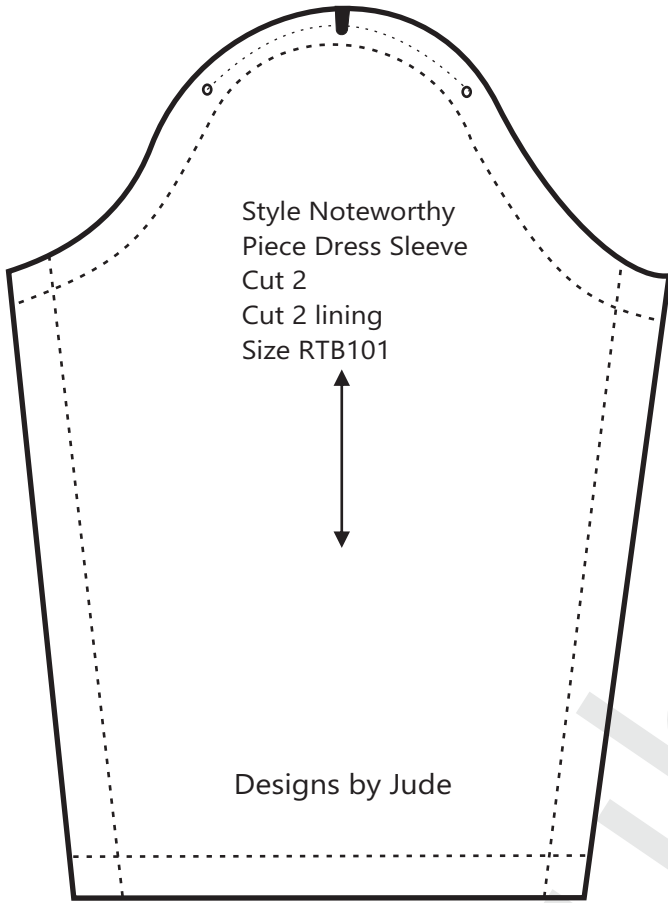
- Sew neck darts in front section of dress. Press open.
- Sew dress front darts and press darts to the side.
- Sew dress back darts and press darts to the side.
- RST sew dress back sections together from hem edge to dot. Press seam open for zipper placement.
- Pin zipper to opening and sew in place. (zipper can also be hand basted in place first and then sewn).
- Sew dress front to dress back at the shoulders. Press seams open.
- Turn lower edge of sleeve up a ¼" and press.
- Run a gather stitch at the upper edge of sleeves between dots.
- Pull gather stitch gently to ease sleeve to fit armhole opening, pin in place and sew.
- Sew dress front to dress back at the side seams.
- Fit to the doll.
- Sew neck darts in front lining section of dress. Press open.
- Sew dress front lining darts and press darts to the side.
- Sew dress back lining darts and press darts to the side.
- RST sew dress back lining sections together from hem edge to dot. Press seam open.
- Sew dress front lining to dress back lining at the shoulders. Press seams open.
- Turn lower edge of sleeve lining up a ¼" and press.
- Run a gather stitch at the upper edge of sleeve linings between dots.
- Pull gather stitch gently to ease sleeve to fit armhole opening of the lining, pin in place and sew.
- Sew dress front lining to dress back lining at the side seams.
- RST pin dress lining to dress at the neck.
- Sew around the neck. Clip seam and turn the lining to the inside of the dress. Press neck opening.
- Turn up hem edge of dress and press.
- Turn up hem edge of dress lining and press.
- Hand finish hem.
- Sew dress lining to zipper tape.
- Hand finish sleeve lining to sleeves.

Jacket

- Reinforce inner corners of jacket front and jacket front facing pieces, pivoting at the dot as shown on the pattern piece. Clip to the dot.
- RST sew the jacket front sections together at the center back of the collar. Press the seam open.
- RST sew jacket front to jacket back at the side seams. Press seams open.
- RST sew sleeve front to sleeve back at the shoulder and overarm edge.
- RST sew sleeve front to sleeve back at the underarm edge.
- RST pin sleeve front (marked A) to front (marked A) and sleeve back (marked B) to back armhole edges (marked B), matching side seam to underarm seam on sleeve.
- Sew in place, stopping $\frac{1}{4}$ " from the edge where the sleeve front meets the collar. (shown as a star on the pattern piece)
- RST pin the neck edge of the collar to the sleeve tops and back.
- Sew in place. Trim seam.
- Sew front facing together at the center back.
- Sew back lining to front facing at the side seams.
- Sew sleeve front lining to sleeve back lining at the shoulder and overarm edge.
- Sew sleeve front lining to sleeve back lining at the underarm edge.
- RST pin sleeve front lining (marked A) to front lining (marked A) and sleeve back lining (marked B) to back armhole lining edges (marked B), matching side seam to underarm seam on sleeve.
- Sew in place, stopping $\frac{1}{4}$ " from the edge where the sleeve front lining meets the collar. (shown as a star on the pattern piece)
- RST pin the neck edge of the collar facing to the sleeve tops and back lining pieces.
- Sew in place.
- With right sides together pin lining to jacket and sew together, leave an opening in the jacket back to turn the jacket right side out.
- Trim and clip seams. Turn jacket right side out and press.
- Hand finish back opening used to turn jacket.
- Hand finish sleeve lining to sleeves at the cuff edge.
- Fit to doll and mark placement for snaps.
- Sew snaps in place.

VDC Collaboration

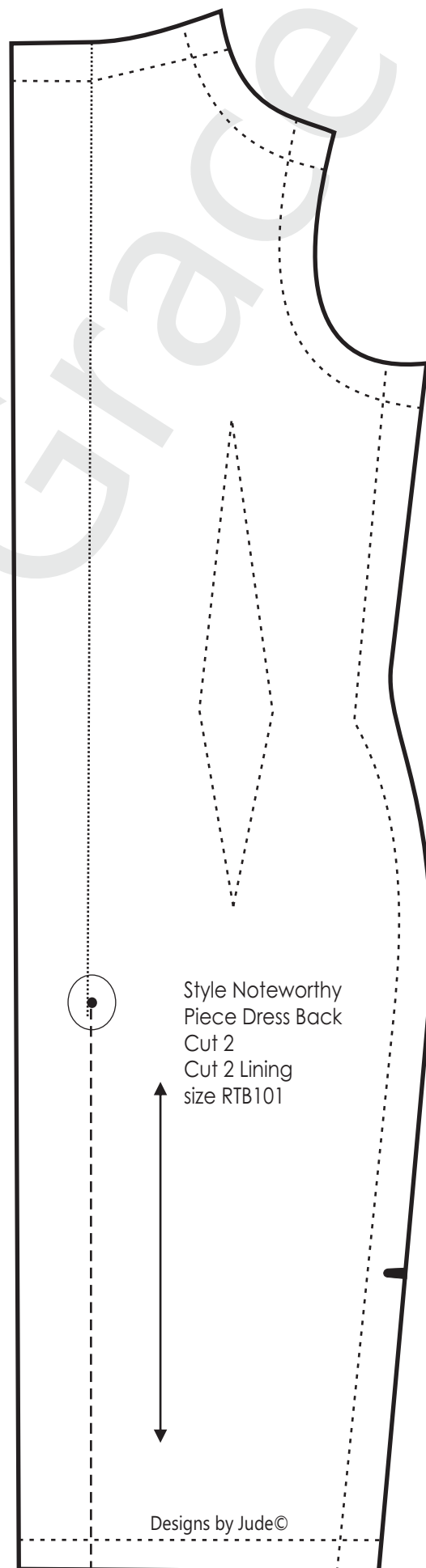
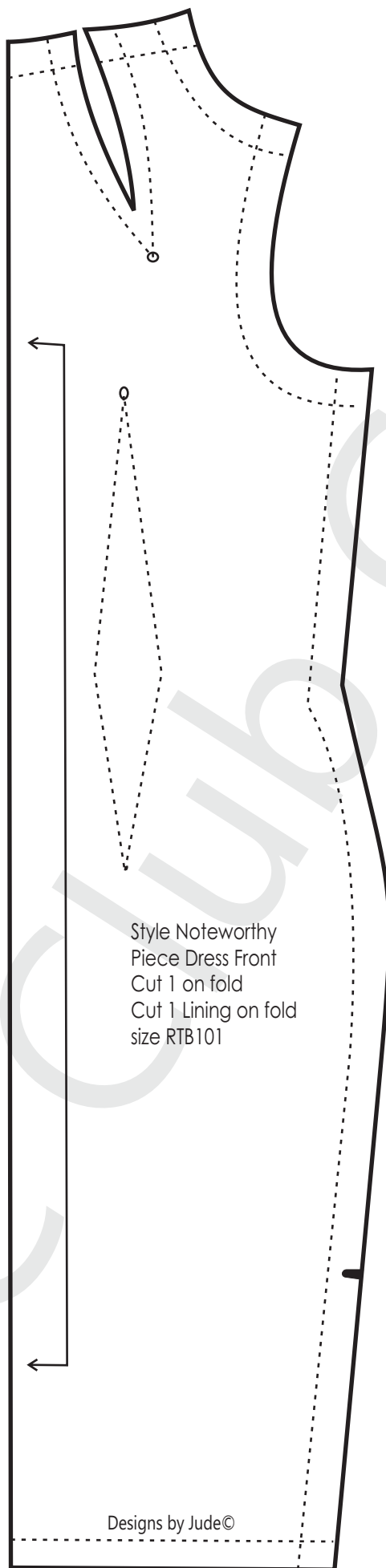
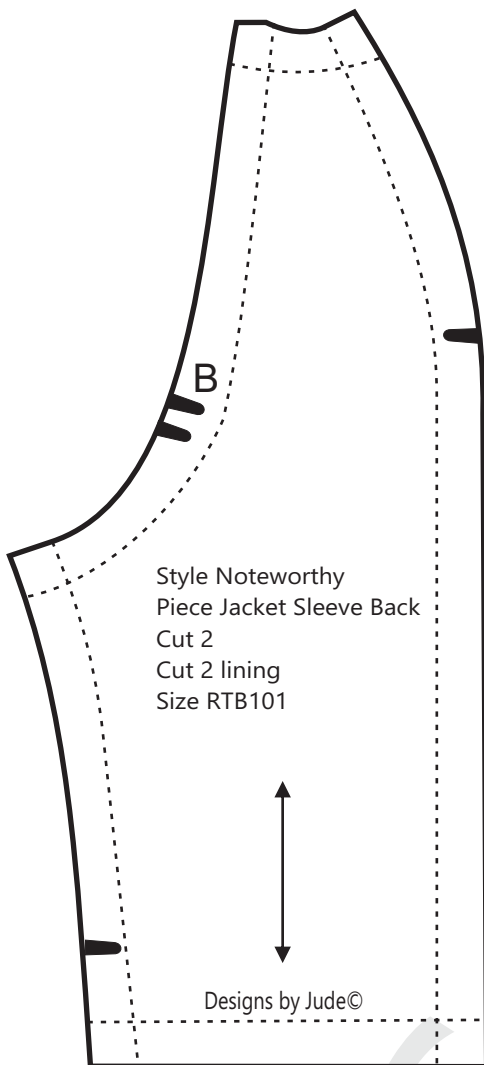
Noteworthy Style
for RTB101 Grace Dolls



VDC Collaboration

Noteworthy Style

for RTB101 Grace Dolls



Fold Line
Stitch Line - - - - -
Grain Line ← →
Notch ▴ Dot ○ Snap ⊗

Seam allowance of 1/4"
is already included in the
dimensions of the pattern