

Every plant in this pollinator plan was selected to attract both butterflies and hummingbirds, doubling your chances of beautiful garden visitors! There are also plants that provide food for several different species of butterfly caterpillars, which will encourage the adults to stick around and lay eggs. These plants were selected to provide season long color and rich sources of nectar from May through October, sustaining the butterflies and hummingbirds that you attract for the entire season while giving you a gorgeous garden spring through fall.

Your new garden will need full sun and moderate water. You could place it in the corner of a lot or on a berm— just be sure that it's oriented so that the lilac is placed at the north end of the garden. That way the taller plants won't shade the shorter plants. Add flat stones for sunning butterflies and wood mulch from Stone Market to finish the look! Butterflies will appreciate a shallow dish of water, and hummingbirds may enjoy a feeder.

The plan is presented below. We'll help you get to know the plants on the next page.

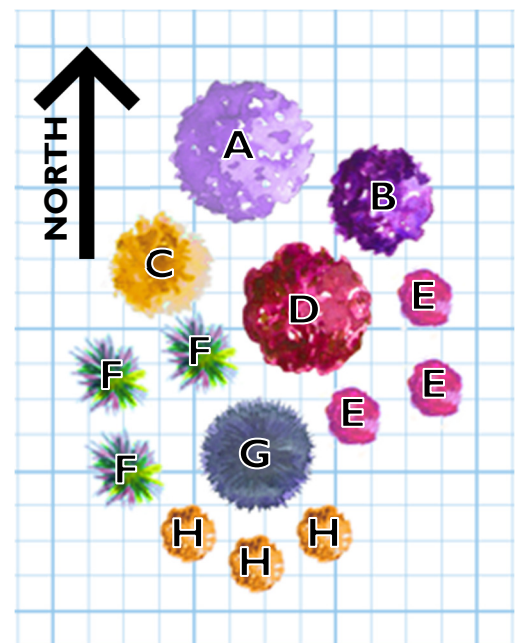
The Plan

Plant List:

- A. One **Lilac**
- B. One **Ironweed**
- C. One **Goldenrod**
- D. One **Hardy Hibiscus**
- E. Three **Perennial Salvia**
- F. Three **Anise Hyssop** or **Swamp Milkweed**
- G. One **Russian Sage**
- H. Three **Butterfly Milkweed**

Approximate cost of plant material: \$255

Dimensions as shown: 12'x14'



Each small square represents one square foot

The Plants



A. Lilacs are among the earliest bloomers here in Central Illinois. Common Lilacs are also a host plant for Tiger Swallowtail Butterfly caterpillars, so if you see a green caterpillar that looks like it has gigantic eyes on top of its head on your lilac, leave it be!

Lilacs come in a range of sizes, depending on the variety, so choose one that's appropriate to the space you have. Use a Bloomerang lilac if you'd like it to bloom more than once throughout the year.



B. Ironweed is a classic pollinator perennial, and also provides food for the caterpillars of American Lady Butterflies. It may look strange on paper to put a purple blooming perennial next to a purple blooming lilac in this plan, but the two of them will bloom at different times. Ironweed is an important late season nectar plant, with some blooming right up to the first frost. This plan is designed with a compact, Fall season variety in mind, such as 'Summer's Swan Song' or 'Summer Surrender.'



C. Goldenrod has been villainized as the cause of Autumn allergies, but the actual culprit is ragweed, so you can plant Goldenrod in your garden with no fear of the sniffles. It provides an important source of late season nectar, fortifying migrating Monarchs and Ruby Throated Hummingbirds for their journey back south. Humans will enjoy having it around too, because the cheery yellow flowers light up the late season garden all the way to frost.



D. Hardy Hibiscus is late to wake from its winter hibernation, but it makes up for it by putting on a stunning show! Huge 7-8" wide flowers appear midsummer into fall, contrasting dramatically with the finer textured Russian Sage and Anise Hyssop, which will be blooming at the same time. Hardy Hibiscus dies to the ground each winter, so cut off last year's growth 8"-12" from the ground in early spring, before the new growth emerges.



E. Perennial Salvia is a great plant for all kinds of pollinators, and most Salvias will re-bloom if you shear them back after each flush of flowers. Although a pink variety is pictured, they also come in white, purple, and periwinkle blue. Pick out whichever variety most appeals to you! No matter the color, pollinators will find them.

Continued on next page



F. Anise Hyssop is a pollinator magnet, and it blooms from summer into fall! (It's also tasty in herbal teas.) However, if you haven't got an unsprayed source of Milkweed available elsewhere and you're concerned about having enough Milkweed for Monarch caterpillars to eat, you may want to substitute Swamp Milkweed for the Anise Hyssop.



G. Russian Sage begins blooming in midsummer, picking up where the earliest blooming plants in this plan leave off, and continuing all the way to the first frost. The leaves and flowers have a lacy look, but Russian Sage is tough as nails, blooming even when the weather turns hot and dry. This plan was designed with a compact variety in mind, such as 'Denim n' Lace.' Choose a Russian Sage with a spread of no more than three feet.



H. Milkweed is the only thing that Monarch caterpillars can eat, making it essential in the pollinator garden. Enjoy the brilliant orange or yellow flowers of Butterfly Milkweed but don't worry if you suddenly notice striped caterpillars munching them! If you're specifically looking to attract and hand raise Monarchs, be sure to have a backup source of unsprayed Milkweed ready. Common Milkweed is easy to find locally once you know what it looks like.

Tips for installing your new garden:

- It's fine to plant during summer, as long as you're prepared to water deeply and often! Know how you plan to water your new plants *before* you plant them. Even if your plants are drought tolerant, they'll need regular water at first to get well established.
- We recommend using Root Stimulator at the time of planting during summer and fall. It gets your plants focused on putting down roots ahead of winter.
- If you have sand or heavy clay soil, dig holes at least twice as wide as you normally would and amend the soil by mixing in 50% compost. You can also use our own Premium Soil Blend, which comes with topsoil, compost and beneficial microbes that will get your plants off to a good start. You'll find both bagged and bulk landscape materials at our Stone Market, next door to the Hoerr Nursery Garden Center.
- A deep wood mulch will help the soil hold water and suppress weeds around your new plants. Bulk wood mulch is also available at Stone Market for pickup or delivery. If you'd like to arrange a bulk delivery of soil, compost, mulch or rock, you can call 309-689-2513 to reach Stone Market directly.
- If you have questions, we're here for you! To speak with one of our experts you can visit the Garden Center, email us at expert@hoerrnursery.com, message us on Facebook or Instagram, or call (309) 691-4561 any time during business hours.