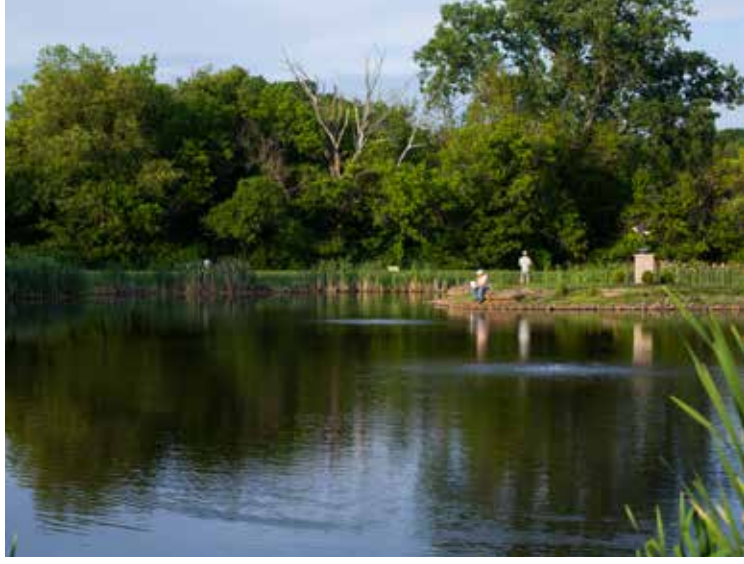


LIVING HERE

Cranberry Township New Resident Guide



Welcome to **CRANBERRY TOWNSHIP** *Pennsylvania*

On behalf of our Board of Supervisors and staff, I am delighted you've chosen to make your home here in Cranberry. As a Township resident, you have become part of one of the most exciting, progressive, and successful communities anywhere in the mid-Atlantic region.

We created the Cranberry Township New Resident Guide to help orient you to your new community. Between the guide and our website, www.cranberrytownship.org, you will be able to quickly learn about our essential services, resources, and policies.

I would also encourage you to sign up for our Alert system, which will notify you by email or text message about program cancellations, schedule changes, traffic alerts, and public safety advisories. Other Township notifications of interest are also available on request. On the website home page, click on the "Community" tab at the top, then click on "Connect With Us" on the menu.

Thank you for choosing Cranberry Township as your neighborhood! I cordially invite you to stop by your Township Municipal Center at 2525 Rochester Road to visit our administrative offices, library, gym, preschool and much more – all under one roof.

Feel free to call us at 724-776-4806 if we can be of assistance.

Welcome home!

Sincerely,



Daniel D. Santoro
Township Manager

CranberryTownship.org



A Little
ABOUT US

Cranberry Township is an ideal place to call home, to run a business, or visit our unique shops and restaurants. With easy access to everything, it's a family-oriented community with a forward-thinking outlook and a positive energy that's reflected in its people, shops, green spaces and businesses.

Cranberry includes just over 23 square miles and a population of more than 32,000+ – up from less than 15,000 in 1990. One reason for that rapid growth has been its prime location. Situated at the intersection of two major Interstate highways, I-79 and the PA Turnpike, Cranberry is easily accessible from anywhere in the region and approximately 20 miles from Pittsburgh.

Understanding
OUR GOVERNMENT

The Township is governed by a Board of Supervisors, five elected officials, each serving a six-year term. Meetings are open to the public and are held twice a month.

The Board appoints a Township Manager to implement policy decisions and serve as the chief of staff for all of the Township departments.

Township Manager:
Dan Santoro

Assistant Township Managers:
Bettelou Bertoncello
Lucas Martsof



*Cranberry Township
Board of Supervisors
(Row 1) Mike Manipole, Bruce
Mazzoni (Row2) John Skorupan,
Bruce Hezlep, Dick Hadley*

TOWNSHIP DEPARTMENTS

Administration: 724-776-4806 x1103; *Manager's Office, Human Resources, Information Technology & Communications*

Cranberry Highlands: 724-776-7372; *18 Hole, Par 70 Municipal Golf Course*

Cranberry Township Police: *Dial 9-1-1 for ALL emergency services; 724-776-5180*

Customer Service: 724-776-4806, option 3; *Primary interface between Township and residents, answering questions and scheduling services*

Engineering & Environmental Services: 724-776-4806 x1134; *Transportation, stormwater, sanitary, water, infrastructure projects, and waste collection*

Finance: 724-776-4806 x1110; *Management of Township finances*

Fire & Emergency Services: 724-776-6130 x1800; *Management of volunteer fire company and EMS*

Parks and Recreation: 724-779-4386; *Resources and services for parks, facilities, recreation, programs, partnerships, and events*

Planning & Development Services: 724-776-4806 x1104; *Planning, Land Development, and Code Enforcement*

Public Works: 724-776-4806 x1500 *Streets, Fleet, Facilities Management, Grounds, and Traffic Operations*

Utilities: 724-776-4806 x1600 *Waste Water Collection, Water Distribution, Solid Waste, Treatment, and Pre-treatment*

Stay Connected With Us!



FACEBOOK

- Cranberry Township
- Cranberry Parks & Recreation
- Cranberry Highlands Golf Course
- Cranberry Police Department
- Cranberry Waterpark
- Cranberry Early Learning Center
- Cranberry Rotary Dog Park
- Cranberry Community Fitness
- Cranberry Township Volunteer Fire Company
- Cranberry Area Diversity Network
- Cranberry Township Community Chest (CTCC)

INSTAGRAM

@cranberrytwp; @ctcchest

TWITTER:

@cranberry_twp; @CranHighlands

YOUTUBE: cranberrytownship

LINKEDIN: Cranberry Township

WEBSITES:

- CranberryTownship.org
- Cranberry4FUN.com
- CranberryHighlands.com
- CranberryLibrary.org

E-NEWS

- Cranberry Central
- Cranberry Highlands eClub
- Parks & Recreation
- Updates from the Board of Supervisors

ALERTS

CranberryTownship.org/Connect

MANAGER'S BLOG

CranberryTownship.org/Blog

CONTACT US:

CranberryTownship.org/ContactUs



New Resident Checklist



SEWER, WATER, AND TRASH SERVICE

Apply online at CranberryTownship.org/ServiceApplication or call Customer Service 724-776-4806. Residents are billed for these services in one convenient, monthly bill. More information on pages 6-8.



GAS AND ELECTRIC SUPPLIERS

In Pennsylvania, you may choose the company that provides your natural gas and electricity. Supplier lists may be found at www.PaGasSwitch.com and www.PaPowerSwitch.com.



PHONE, CABLE, AND INTERNET

Every home in Cranberry Township has all three services available. See page 10 for more information.



MAILING ADDRESS CHANGE

File a change of address online, <https://moversguide.usps.com> or at the Post Office, 240 Executive Drive.



SCHOOL ENROLLMENT

Cranberry Township is in the Seneca Valley School District, 124 Seneca School Road, Harmony, PA 16037. Call 724-452-6040 or visit www.svsd.net for more information on Seneca Valley School District. More school information on page 10.



DRIVER'S LICENSE

Out of state driver's licenses must be converted within 60 days of establishing residency. For more information, visit www.dmv.pa.gov.



MOTOR VEHICLE REGISTRATION

New residents must apply for a title and registration for their vehicle within 20 days. Annual vehicle registration and inspection are required in PA. Visit www.dmv.pa.gov.



VOTER REGISTRATION

To vote, you must be registered with the Butler County Bureau of Elections: www.co.butler.pa.us/vote or call 724-284-5308. For more information on voting in Cranberry, visit CranberryTownship.org/Vote or see page 10.



DOG LICENSE

Dogs over 3 months of age must be licensed in PA. Annual licenses may be purchased in the Cranberry Library or online. Lifetime licenses are available in the Butler County Treasurer's Office. For more information on dog licenses, visit <https://www.butlercountypa.gov/368/Dog-Licenses>.



SIGN UP FOR COMMUNITY ALERTS AND eNEWS

Be the first to know what is happening in Cranberry! Sign up for email or text alerts and announcements at CranberryTownship.org/Connect.



LIBRARY CARD

A card is free to Cranberry Township, Butler County residents with proper identification. For more information, visit CranberryLibrary.org or see page 5.

At Your SERVICE



CRANBERRY TOWNSHIP POLICE

The Cranberry Township Police Department is responsible for maintaining a safe and secure environment for residents and visitors. Visit CranberryTownship.org/Police for customer service desk hours and more information.

Police Administration

2525 Rochester Road, Suite 500
724-776-5180 (Non-emergency calls only)



PUBLIC LIBRARY

Cranberry Library has more than 90,000 catalogued materials including books, DVDs, and periodicals as well as public computer stations, a children's library, meeting rooms, Wi-Fi, and a new Makerspace. The library also offers year-round educational programs and classes for all ages, including storytimes, book clubs, computer classes, and seminars. For more information, visit CranberryLibrary.org.



FIRE & EMERGENCY SERVICES

Cranberry Fire & Emergency Services manages the volunteer fire company and emergency medical services in our community.



Administration:

2027 Route 19, Suite 21
724-776-6130 (Non-emergency calls only)

CRANBERRY TOWNSHIP VOLUNTEER FIRE COMPANY

CTVFC provides fire and rescue services, as well as safety education for the community. For more information, visit CTVFC21.org.

Park Fire Station:

2027 Route 19, Suite 21
724-776-6130 (Non-emergency calls only)

Haine Fire Station:

1629 Haine School Road



CRANBERRY TOWNSHIP EMS

Cranberry EMS provides emergency and non-emergency patient care, patient transportation, and community-oriented programs. Subscriptions are available to eliminate costly co-payments and deductibles. Visit CranberryTownshipEMS.org for more information.



Cranberry Township EMS Station

2027 Route 19, Suite 51
724-776-4480 (Non-emergency calls only)



RECREATION PROGRAMS AND ACTIVITIES

Cranberry Parks and Recreation offers a wide variety of classes and programs for all ages. For information on programs, classes and special events, visit Cranberry4FUN.com/Programs. See page 11 for more information on parks and facilities.

Parks and Recreation Customer Service

2525 Rochester Road, Suite 600
724-779-4FUN (4386); Cranberry4Fun.com



SEWER, WATER, AND TRASH SERVICE

Apply for service online or call Customer Service: 724-776-4806, Monday-Friday, 7:30 AM - 5:00 PM. Please allow at least one business day prior to the start of service for water, sewer, trash, recycling, and yard waste collection or to set up a new utilities account.

Billing is on a monthly basis. Statements are mailed the first week of the month and due on the last business day of each month.

SEWER AND WATER

Sewer and water quantity rates are charged on a per gallon basis and charges are based on water consumption as determined by a meter reading. The Township's Customer Portal gives in-depth data related to water usage. Sign up at CranberryTownship.org/CustomerPortal.

TRASH AND RECYCLING COLLECTION

Weekly curbside trash and recycling collection services are provided to the majority of homes in Cranberry. Yard waste is also collected weekly, during seasonal periods, and two weeks are set aside in January for Christmas tree pickup.

No Collection: New Year's Day, Memorial Day, Independence Day, Labor Day, Thanksgiving Day, and Christmas Day. **There is no schedule change if the holiday falls on a weekend**, regardless of when the holiday is observed.

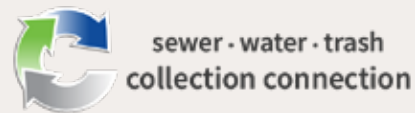
If your collection day is:

- On or after a weekday holiday, your collection will be 1 day later.
- Before a weekday holiday, there will be no change in your collection.

Extra Items: Our program uses prepaid stickers for the collection of extra items (*outside of the carts*) on regular collection days. Purchase online at CranberryTownship.org/CollectionStickers or during business hours in Customer Service, Parks & Recreation, or Cranberry Highlands Golf Course.

Easy as **1** **2** **3**

1. Apply online at CranberryTownship.org/ServiceApplication or call 724-776-4806 for Sewer, Water, and Trash Service, which is billed monthly.
 2. Select cart sizes- 35, 64, or 96 gallons. The monthly rate depends on the size of the GRAY-TOP cart selected for garbage. Recycling (BLUE) and yard waste (GREEN) are included at no additional charge.
 3. Put your carts at the curb the night before your collection day, facing the street at least 2 ft. apart and at least 5 ft. from mailboxes or other free-standing objects. (Please take carts back by the end of the day.)
- Visit CranberryTownship.org/TrashSchedule for a listing of collection days by streets.



Learn more: CranberryTownship.org/Collection



RECYCLING (Place inside BLUE bin with no plastic bags)

Material	Accepted	Not Accepted	Preparation
Glass	Clear, brown, amber and green glass bottles and food jars	Broken glass, light bulbs, dishes, drinking glasses, ceramics, mirrors, Pyrex or tempered glass	Rinse, remove and discard lids, and do not break glass. (Labels may be left on.)
Aluminum, Steel and Bi-Metal Cans	Food and beverage cans	Aluminum foil, cans containing food, clothes hangers, scrap metal, screws, nails, toys, lawn furniture, paint cans, and siding	Rinse cans (crush if space is needed). Please push lid down inside of can.
Plastics (PET, HDPE) Stamped #1 thru #6	Clear and green plastic soda bottles, milk and water jugs, liquid detergent, bleach and softener bottles, hair care bottles	Styrofoam peanuts and blocks, plastic plant pots, #7 plastic, foam plastic egg cartons, plastic wrap, bubble wrap, plastic bags (loose nor bundled), CD/DVD's, toys, lawn furniture, motor oil, cooking oil	Discard lids and rinse container (Crush if space is needed.) Lids are not recyclable, be sure to remove & discard in trash.
Newsprint/ Magazines	Newspapers, magazines, catalogs, office and computer paper, phone books, wrapping paper, junk mail	Foil wrapping paper	Place loose in cart.
Cardboard	Clean, corrugated, pressed cardboard cartons, boxes including, moving and shipping, paperboard boxes, tissue boxes	Pizza boxes, milk cartons, juice boxes, take-out food containers, oily, soiled, or contaminated cardboard	Flatten or break down into pieces no larger 4 feet. Remove all packing material including styrofoam blocks, peanuts, bubble wrap, etc.

SEWER, WATER AND TRASH BILL PAYMENT OPTIONS

Bills are mailed the first week of the month and are due by the last business day. A 10% penalty fee will be assessed if a bill is not paid by the due date.

- **Pay by Mail:** Include the statement stub and write your account number in the memo field on your check. Mail to Cranberry Township, P.O. Box 6075, Hermitage, PA 16148-1075. Returned checks are subject to a \$30 fee. Do not mail cash.
- **Pay in Person:** Pay by cash, check, or money order, by visiting our Customer Service Desk in the Administration Offices, Cranberry Township Municipal Center, 2525 Rochester Rd., Cranberry Township, PA 16066. Payments are accepted in person Monday - Friday, 7:30 AM. to 5:00 PM, except holidays. Returned checks are subject to a \$30 fee.
- **Township Office Drop Box:** Payments may be placed in the payment drop box located within the Municipal Center near the Administration Office doors. Payments placed in the box after 5 PM are credited on the following business day. Returned checks are subject to a \$30 fee.
- **Pay Online:** Credit card and eCheck payments are accepted online only. Convenience fees, charged by the payment service, are applied. Please allow up to 48 hours processing time to post the payment to your account.
- **Electronic Payment From Your Bank:** Set up the payment through your financial institution's online banking system. Use your 8-digit account number in the payee account field provided by the bank. Remember to update this account number if you move from one address to another within Cranberry Township.

SAVE TIME & MONEY- GO PAPERLESS!



EMAIL-BILL

Get your monthly bill by email. Pay it any way you choose.



EMAIL-BILL PLUS AUTOMATIC PAYMENT

Choose both and get a \$1 credit every month.



AUTOMATIC BILL PAYMENT

AutoPay lets Cranberry make an automatic withdrawal from your bank account on the due date.



MONITOR WATER USAGE AND SET ALERTS

Monitor and control water usage with the free Customer Portal feature. The tool is designed to give residents the option to better manage their water consumption. The portal will provide insights into water usage on a daily or weekly basis. To access the portal, visit CranberryTownship.org/CustomerPortal.

For additional information or help with setting up your account, please contact Customer Service at 724-776-4806.

STORMWATER MANAGEMENT

The Cranberry Township General Authority, formed in 2014 to undertake capital projects on behalf of the Township, imposed a Stormwater Utility Rate on all developed real estate in Cranberry starting January 1, 2020.

Proceeds from the rate, which will be collected by the Township through its monthly water/sewer/trash bills, will be used to maintain and enhance Cranberry's stormwater handling resources, as required by state and federal law.

Cranberry's current stormwater management system is extensive. All property owners are required to keep their stormwater facilities in working order at their own expense. Cranberry currently spends over a million dollars a year to maintain its portions of that system. Until recently, Cranberry financed its stormwater system and flood control maintenance from general tax revenues. However, with the state's updated regulations, that expense has grown.

The stormwater utility rate helps to offset the cost of U.S. Environmental Protection Agency and Pennsylvania Department of Environmental Protection mandates to manage the quantity and quality of stormwater.

Visit CranberryTownship.org/Stormwater for more information.





BUILDING AND ZONING CODES

Many residential construction projects require building permits, including additions, decks, and swimming pools.

For information on residential building/zoning permits, visit CranberryTownship.org/BuildingCodes or call Cranberry Planning and Development Services, 724-776-4806 x1104.



TRAFFIC MANAGEMENT

Cranberry's traffic signal timing is updated regularly using state of the art programs and timing principles coordinated in the TOC (Traffic Operation Center). Visit CranberryTownship.org/Traffic for more information on traffic management in Cranberry.



SIDEWALKS

Regardless of who originally built the sidewalk, the Township's ordinance requires the owner whose property is traversed by that sidewalk to maintain it and clear its full width within 48 hours of a snow event. Visit CranberryTownship.org/Sidewalks for more information.



SOLICITATION IN CRANBERRY TOWNSHIP

Soliciting is restricted to the hours of 10AM - 9PM, Monday through Saturday. Anyone wishing to sell goods door-to-door are required to apply for a license. Individuals going door-to-door not selling anything are not required to have a permit. Residents may register online for the Do Not Knock list (DNK) to avoid door-to-door sales. Visit CranberryTownship.org/DoNotKnock for more information.



SNOW REMOVAL

Throughout the winter, Cranberry's Public Works department plows and salts the roads that are owned by the Township. PennDOT is responsible for clearing state-owned roads in Cranberry. Property owners are responsible for finding contractors to clear privately owned roads in the Township. Visit CranberryTownship.org/WinterRoadCare for more information on snow removal and roads.



LOVE DOGS?

Join the
CRANBERRY CONNECTION



MEETINGS:
2nd Tuesdays in
April, June, August
and October
Details on our website!

CranberryK9Connection.com

EDUCATION

PUBLIC SCHOOL

Cranberry Township is in the Seneca Valley School District, which also includes Forward, Jackson and Lancaster Townships, Callery, Evans City, Harmony, Seven Fields and Zelenople Boroughs. The Administration Office is located on the same campus in Jackson Township as the senior high school, intermediate high school and 7-8 grade middle school. Three SV schools are located in Cranberry- Rowan Elementary, Haine Elementary and Middle Schools.



Seneca Valley School District

124 Seneca School Road
Harmony, PA 16037
724-452-6040; www.SVSD.net

PAROCHIAL/ PRIVATE SCHOOLS

St. Kilian Parish School, K-8
724-625-1665; www.saintkilian.org
North Catholic High School, Grades 9-12
412-321-4823; www.northcatholic.org

SENIOR SERVICES

CRANBERRY SENIOR CENTER

Located in the Municipal Center, the Senior Center is open year round. It is operated by the the Butler County Area Agency on Aging, offering daily lunches Monday-Friday, plus planned activities.

55+ drivers education classes are offered on a regular basis, call 1-800-559-4880 for class information or visit www.sfsd-pa.com. For more information, contact the Butler County Area Agency on Aging at 724-282-3008 or email AAAseior@co.butler.pa.us.

CRANBERRY SENIOR CLUB

Open to Cranberry Township residents, ages 55+, this group meets at 1:00 PM on the 2nd Tuesday of the month at the Municipal Center. The Club features activities, social opportunities, and visits to nearby points of interest. Interested? Contact Bill, 724-776-1933.

BART (BUTLER AREA RURAL TRANSIT)

BART is a shared ride system transporting 60+ seniors to senior centers, medical appointments, adult day care, and other destinations within Butler County using handicapped accessible vehicles. Call 724-282-6060 for more information.

BUTLER TRANSIT AUTHORITY (BTA)

BTA is a fixed route transit system that operates five local fixed routes in Butler, PA and commuter runs between Butler and Pittsburgh. For more information, visit www.butlertransitauthority.com.

HOSPITALS/ URGENT CARE

LOCAL HOSPITAL

UPMC Passavant- Cranberry

1 St. Francis Way, Cranberry Twp.
724-772-5300; www.upmc.com/locations/hospitals/passavant

LOCAL URGENT CARE FACILITIES

FalconER Urgent Care

1241 Freedom Road, Cranberry Twp.
724-235-6000; www.urgentcarecranberry.com

MinuteClinic

1181 Freedom Road, Cranberry Twp.
724-742-1888; www.cvs.com/minuteclinic

Absolute Primary Care - UPMC

20630 Rte 19 #101, Cranberry Twp.
724-779-2273; <https://providers.upmc.com>

UPMC Children's Express Care

8000 Cranberry Springs Drive, Cranberry Twp.
724-720-3098; www.chp.edu/locations/express-care-cranberry

Cranberry Township VA Clinic

900 Commonwealth Drive, Cranberry Twp.
742-3500; www.butler.va.gov/locations/Cranberry_Township_VA_Outpatient_Clinic.asp

CALL WHEN YOU NEED FIRE POLICE EMS

9-1-1

BUTLER COUNTY SERVICE

VOTING INFORMATION

For complete information on voting in Cranberry, poll locations, and related links, visit CranberryTownship.org/Vote.

Register to vote with the Butler County Bureau of Elections. The deadline to apply to register to vote is 30 days prior to each election. Call 724-284-5308 or visit www.co.butler.pa.us/vote for more information.

Polls are open from 7:00 AM - 8:00 PM on Election Day.

LOCAL TAX INFORMATION

Property Tax Office

The elected property tax collector office is located in the Municipal Center. P.J. Lynd is responsible for collecting Cranberry Township Property Taxes, Butler County Property Taxes, and Seneca Valley School District Property Taxes, as well as the Real Estate Transfer Tax. For information, visit CranberryTownship.org/PropertyTaxOffice or call 724-776-1103.

Earned Income/Business Privilege/ Mercantile Collector

Berkheimer Tax Administrator is the appointed tax collector for Earned Income Tax, Business Privilege / Mercantile Tax, and License and Local Services Tax. For more information on taxes, visit CranberryTownship.org/LocalTaxes.

UTILITY PROVIDERS

Natural Gas and Electric

In Pennsylvania, you may choose your own provider. For a list of providers, visit

- Natural Gas: www.PaGasSwitch.com
- Electric: www.PaPowerSwitch.com

PHONE, CABLE AND INTERNET

There are two companies that provide bundled TV, phone and internet service in Cranberry: Armstrong Utilities, which is the Township's dominant supplier, and Consolidated Communications. Homes north of North Boundary Road can get phone service from Verizon, but not TV or Internet connections. Other service providers are welcome to do business in Cranberry, but so far, none have taken advantage of the opportunity. Satellite TV is also a phone/ internet option.

- Armstrong: 877-277-5711
- Consolidated Communications: 724-443-2000
- Century Link: 1-866-906-2934
- Verizon: 1-888-546-6204



An Overview of OUR FACILITIES

Cranberry offers a wide range of facilities, recreational programs, activities and events. Enjoy 3 major parks, waterpark, disc golf, skatepark, dog park, public golf course, 15 miles of marked bikeways, 25+ miles of trails, and 150+ miles of sidewalks!



1. CRANBERRY MUNICIPAL CENTER
2525 Rochester Road

- Township Administration
- Parks & Recreation
- Cranberry Police
- Cranberry Library & Makerspace
- Cranberry Early Learning Center
- Cranberry Area Diversity Network
- Property Tax Collector
- Council Chambers
- Grange Hall (Senior/Teen Center)
- Class/Meeting Rooms
- Gazebo/Garden/Schoolhouse
- Gymnasium
- Indoor Walking
- AE Skate Park
- Free WiFi by Armstrong
- AED
- District 12 State Representative
- Chamber of Commerce Offices
- ATM



2. COMMUNITY PARK
111 Ernie Mashuda Drive

- Rotary Amphitheater
- Rotary Shelter
- Lions Shelter
- Jaycees Shelter
- Raider Pride Shelter
- 2 Sand Volleyball Courts
- 5 Baseball/Softball Fields
- Football/Multi-purpose Field
- Basketball Court
- Tennis Courts
- Rotary Dog Park
- Kids Castle Playground
- Nature Trail
- Little Free Library
- Restrooms
- Free WiFi by Armstrong



3. UPMC PASSAVANT SPORTSPLEX AT GRAHAM PARK
260 Graham Park Drive

- Baseball/Softball Campus
- Miracle League Field
- Pirates Charities Playground
- Little Free Library
- Heritage Village Display
- Soccer Campus
- Football/ Lacrosse Campus
- CTCC SportCourts
- (Pickleball/Tennis/Horseshoes/Bocce)
- Centennial Scouting Plaza
- Fishing Pond
- Brush Creek Trail
- Community Garden
- Bike Repair Station
- Dek Hockey Rink
- 2 Fitness Stations
- Free WiFi by Armstrong
- Free Parking
- Concessions
- Restrooms
- Outdoor AED
- ATM



Cranberry offers a variety of meeting rooms, multipurpose rooms, a gymnasium, and park shelters for community use. Rental fees apply. Visit Cranberry4FUN/FacilityRental for more information.



4. CRANBERRY HIGHLANDS
5601 Freshcorn Road

- 18 hole, Par 70 Course
- Clubhouse
- Pro Shop
- Food and Beverage Services
- Banquet & Meeting Rooms
- Grill Room & Patio
- Men's & Women's Locker Areas
- Audubon Pavilion
- USGA Handicapping
- Rental Clubs
- Club Fitting & Repair
- Driving Range
- Golf Carts with GPS Navigation
- Golf Instruction
- Audubon Nature Trail
- Free WiFi by Armstrong



5. NORTH BOUNDARY PARK
1171 North Boundary Road

- Community Waterpark
- Crocodile Cove Playground
- Nextier Walking Trail
- Disc Golf Course
- Nature Trail
- Veterans Memorial
- Dan Baker Shelter
- Penn Power Shelter
- Reynolds Shelter
- Veterans Baseball Field
- Giant Eagle Soccer Field
- Rodgers Soccer Field
- James Wolfe Soccer Field
- Skip Gross Wetlands
- Concession Building & ATM
- Playground
- Restrooms
- Bike Repair Station
- Fitness Station
- Free WiFi by Armstrong



Follow Us!



Sign up for Alerts!

Be the first to know about traffic alerts, weather delays, construction updates & more!
Visit [CRANBERRYTOWNSHIP.ORG/CONNECT](https://www.cranberrytownship.org/connect) to receive alerts via text or email.