

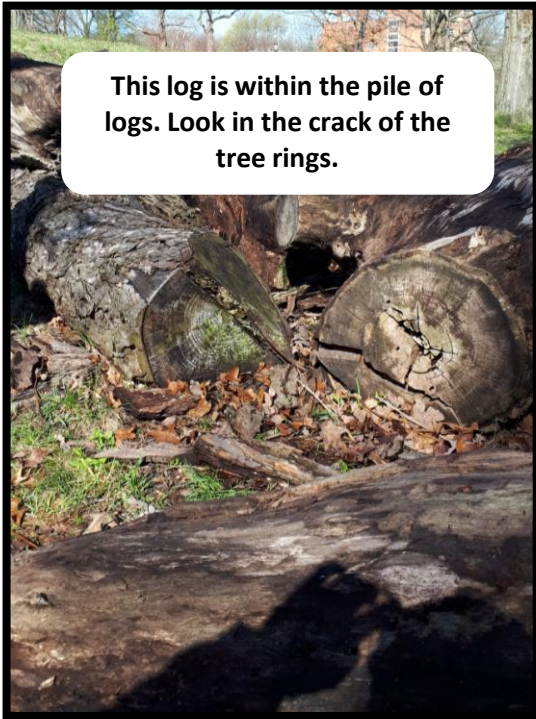
Access pt #1
Parking: parking lot



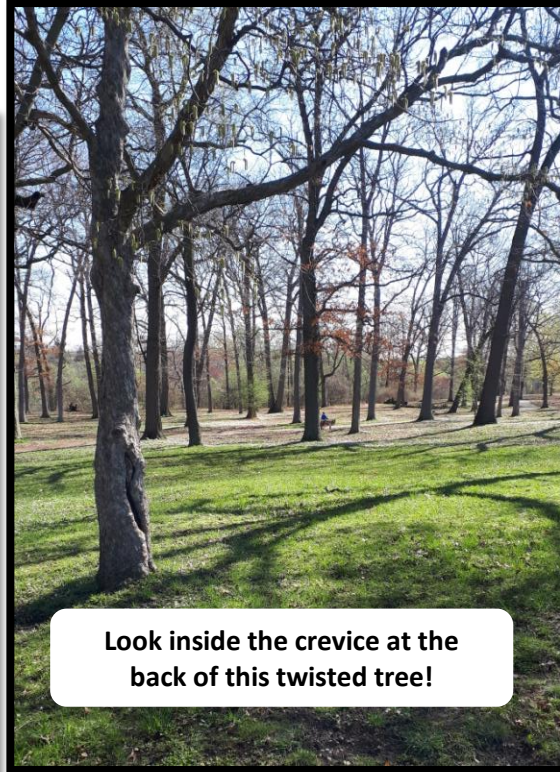
Pottersburg Valley

Enter off Trafalgar Street

Hint: all stones are hidden in the area before the bridge



This log is within the pile of logs. Look in the crack of the tree rings.



Look inside the crevice at the back of this twisted tree!



Look in the split of the log at the perimeter of the pile.



Look in the root protrusions of this fallen tree



Look in the hollow of this felled log leaning down the ravine.

Can you find all of these places and things?
Share your pictures on Facebook and Instagram with #WildChildESACallenge