



EQUILIBRIUM

Newsletter of the Seattle Chapter
Structural Engineers Association of Washington

November 2010

President:
Andrew McGlenn

Vice President:
Howard Burton

Treasurer:
Theodore E. Smith

Past President:
Peter Opsahl

Directors 2009-2011:
Cheryl Burwell
Tom Bykonen

Directors 2010-2012:
Lara Simmons
Michael Wright

YMF Representative:
Daniel Yeager

Executive Director:
M. Lynnell Brunswig

VISIT OUR WEBSITE:
www.seaw.org

In this issue

From the Board	2
YMF /Meeting Recap	3
NCSEA Report	4
Huston Receives Award	4
New LEED Credentials	5
Meetings, Seminars	7
Opportunities	9
Calendar	12
Membership	12

No
Chapter
Meetings
In
December
Happy
Holidays!

How the November 16, 2006 Bellevue Tower Crane Collapse Could Affect Your Professional Practice

Join SEAW Seattle and Southwest Chapters and ASCE for this three-part presentation, featuring:

George Twiss, PLS, Executive Director, Washington State Board of Registration for Professional Engineers and Land Surveyors, who will discuss "Steps and Decisions Taken by the Board on its Investigation of the Tower Crane Collapse."

Jon Magnusson, PE, SE, Hon. AIA, Chairman/CEO, Magnusson Klemencic Associates, who will present "Bellevue Crane Questions from a Professional Engineer's Viewpoint"

A panel discussion of issues related to the practice of engineering:

- Engineer of Record defined
- Designated Engineer
- Stamping of Work
- Maintenance of Records

About our Presenters:

George Twiss is Executive Director of the Board of Registration for Professional Engineers and Land Surveyors. Mr. Twiss was first employed by the Board in 1986 to be their first full-time investigator of complaints against engineers and land surveyors. He was subsequently promoted to the manager of the investigation program and later appointed Executive Director in 1997.

As Executive Director Mr. Twiss has also served in many NCEES committees and task forces. He has served and chaired committees on: Law Enforcement, National Records Program; Uniform Procedures and Legislative Guidelines, Finances, Advisory on Council Activities, and LS examinations. He has been on task forces studying electronic signatures, international credentialing, and evaluations of applications. His contributions to investigations at both the state and national level resulted in his recognition by the NCEES with the Meritorious Service Award in 1996.

Jon Magnusson, Chairman/CEO of Magnusson Klemencic Associates, is a registered engineer in 25 states. He has served as Principal-in-Charge on more than \$3 billion of



construction in the last 10 years. He is a Distinguished Member of ASCE, a Fellow of IStructE, and a Honorary Member of the National AIA.

This program is valued at 2 PDHs. Certificates will be available at the meeting.

Meeting Information:

Date:	Tuesday, November 16, 2010	
Place:	Best Western Executive Inn 200 Taylor Ave N, Seattle	
Time:	5:00—6:00 PM	Social Hour
	6:00—6:30 PM	Dinner
	6:30—6:40 PM	Welcome/Introductions
	6:40—9:00 PM	Program
Menu:	Entree Choices: Chicken Marsala or Pasta Primavera	
Price:	SEAW/ASCE Members	\$30.00
	Non-members	\$35.00
	Students/unemployed	\$15.00
	Registration after 11/10, add	\$5.00

Reservations Required

Reservation deadline is 5 PM Friday November 12

Register Online at www.seaw.org

Prepayment is Requested

No-shows and cancellations after the deadline will be subject to full charge.

Parking is available in the Best Western upper and lower lots, as well as on the street.

From the Board

I am currently in the second year of my time on the board of directors of the SEAW Seattle Chapter. The board is a very fluid entity as the terms are only two years. It has taken me a while to figure out how this group runs, what it does, and what it should be doing. In agreeing to serve on this board, I was hoping to find a way to be of some value to the organization. I've been really impressed by the effort and work that the group puts into SEAW.

At the start of my term I attended the board meetings without any idea of what to expect. In retrospect it would have been helpful to have more overlap with the exiting board members. Lynnell Brunswig really holds a lot of the organization's history and ties the group together over the years. Lynnell is an amazing resource.

My fellow board member, Howard Burton, started the process of updating and renewing the long-unchanged SEAW bylaws; not a glamorous task, but one that really needed some attention. In doing this, Howard researched successful structural engineering groups from other areas. In their board organization, these groups had commit-

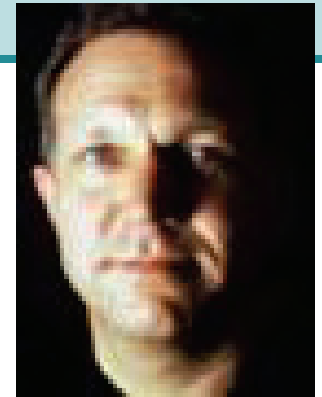
tees that basically oversaw the rest of the committees. This inspired the original idea of the Committee on Committees.

So what is the Committee on Committees? It is an entity that will help the committees do what they do. Committees are really where all the work takes place in SEAW. For a group of volunteers, they do a great job. The Committee on Committees is there to provide the assistance and support of the board of directors to the committees.

The first task of this group has been to identify committees, their leadership, and membership.

After compiling this information, the Committee on Committees can then focus on the following elements:

1. Improve the membership mix on committees. The Committee on Committees can help identify the need for the number of members on a committee and help create a good mix of experience and backgrounds for each group. This will help to keep the committee memberships balanced.
2. Help with recruiting. If a committee desires a certain level of expertise or experience, this group can help pull from all of SEAW's resources. If a member is looking to get involved in a committee, this group can help match the person to the committee needs at SEAW.
3. Create a transition for committee chairs. The Committee on Committees can help with developing a vice chair or a chair-in-waiting for these groups to prevent chair assignments from being life sentences. Development of successor leadership will ensure that when a chair needs to leave his/her position, the committee won't suffer from lack of leadership. The mentoring and training of individuals to help make them effective future chairs will help ensure continued committee success.
4. Help committees to set goals. The committees may not know what the overall structural engineering community may want or need from its groups. The Committee on Committees can help the committees set goals and timeframes for projects. This can include help with setting seminar topics and dates, preparing White Papers on topics of concern, and determining areas of focus.
5. Provide a connection to the board of directors. In the past, the board assigned a board member to each committee. This board member then reported to the board on the committee's ongoing activities. There is also an annual committee chair update presentation to the board. This system needs to be refined to provide a more direct link with the board, and will be a work in process.
6. Be responsible for the ongoing assessment of the effectiveness of committees as well as make recommendations for improvements and changes to the operations and structure of committees.
7. Help to develop a way for all of the committees and the Board to communicate more readily. This will most likely take the form of an



electronic open forum. We will work with the new Technology Committee to develop a platform.

This Committee on Committees concept still has a number of issues to be worked out. It is our hope that it will help make the overall SEAW organization better and more effective. The actual makeup is still being discussed. How many members the Committee on Committees will have, the mix of members, and the chair are still to be determined. If you have any feedback please let me know.

This is my last year on the Board, and the last "From the Board" column that I will have an opportunity to write. I want to thank everyone for their efforts and support. There are many things that I like about this profession. There are also many things that I would like to change. Perhaps one day. . .

Have a great and safe Thanksgiving Holiday.

Tom Bykonen
tmb@pxbyk.com

The SEAW Seattle Chapter *Equilibrium* is published monthly from September through May and is available online at www.seaw.org.

Articles, letters, and announcements are accepted by e-mail to seaw@seaw.org.

Advertising rates (prepaid)
Help Wanted/Job wanted, max 200 words, \$65; Display ads: Quarter page, \$115; Half Page, \$150; Full Page \$190. 10% discount for ads running two or more months. Deadline is the fourth Friday of the month. Contact SEAW for an advertising order form.

Except where noted, opinions expressed in this newsletter reflect those of the author and do not reflect or represent the position of SEAW. Portions of this newsletter may be reproduced provided credit is given.



YMF Corner: October YMF Meeting Recap

By Dan Yeager

Every fall the Seattle Younger Members Forum, with support from the Seattle Chapter Board, hosts a dinner meeting. This year's dinner meeting, as in years past, consisted of a Firms Showcase and presentations by students from Seattle University and the University of Washington.

This year's firms, **Reid Middleton, MKA, Quantum Consulting Engineers, Degenkolb, MRP Engineering, KPFF, DCI Engineers, Berger/ABAM, and Tetra Tech**, were gracious enough to sponsor the event as well as share their knowledge and experience with engineering students from the two universities. I would like to personally thank all of the firms again for their continued support.

The following is a recap of the student presentations:

Design of the PJF Community Center in Medellin, Columbia:

Due to the current project scope not being complete at this time, Seattle U students will either be performing a building retrofit on the current structure or a completely new design at an undetermined site. Requirements for both include increased rooms for educating children, offices for foundation employees, and rooms for job training. Students will take design to 35% construction document completion.

Design of Hand Rails and Guard Rails at Cedar Falls Dam

Since the dam at present does

not meet all current safety regulations, Seattle U students will be designing new guard rails and hand rails that meet current building codes. The challenge with this project will be creating rails that satisfy all loading requirement while meeting the aesthetic requirements set forth by the historical society. Students will provide complete design and cost analysis with each of the multiple connections required for each section of the dam.

Community Center and Dormitory in Ethiopia

Seattle U students will be working with Engineers Without Borders to design a new community center and dormitory near Addis Ababa, Ethiopia. The community center will be completed in multiple phases. When complete the community center will provide a much needed social center for residents and dormitories to house approximately 600 orphans. Students will provide complete design and cost analysis for Phase I, a single dormitory and a portion of the community center.

University of Washington Steel Bridge Team:

UW students for this year's team will travel to Alaska in order to compete for a chance to compete at nationals. Students were given a specific set of parameters for the size and shape of the bridge as well as a combination of loadings the bridge will be tested under. This year

provides a larger challenge due to a cantilevered portion of the bridge. Using analysis programs students iterated many different versions of their bridge to maximize strength and stiffness and minimize weight and construction time.

Rapid Construction of Bridges Using Precast Concrete

In order to decrease construction time and traffic congestion, the use of precast column elements and cast-in-place footings was investigated by Todd Janes at the University of Washington. Todd's findings were that a precast column can perform exceptionally well under seismic and gravity loads when properly connected to a cast-in-place foundation.

Embedded Concrete-Filled Steel Tube columns for Seismic Applications

Concrete-filled steel tubes are composite elements which combine the compression strength of concrete with the tensile ductility of steel, making them ideal for use in seismic areas. This study performed by Jason Lee has focused mainly on creating a standard connection of the columns to concrete foundations that will be efficient to

construct and will be less cumbersome than current design methodologies.

Seismic Performance of the Linked Column Framing System

In order to better serve their clients, some building owners feel that it is necessary for their tenants to immediately occupy offices after a seismic event. Research is being performed by Mohammad Malakoutian to create a framing system that will be simple and economical to replace after a seismic event. This framing system uses "closely spaced columns, adjacent to more flexible moment resisting frames" to provide high energy dissipation.

Thank you to all the student presenters. You all are doing some ground breaking research that may eventually change how we design and construct structures in the future.

Dan Yeager, YMF Chair
dyeager@dc-engineers.com



YMF Leadership

Chair:

Dan Yeager
dyeager@dc-engineers.com

Outreach Representative

Kevin Solberg
kms@mka.com

Vice Chair

Robyn Yang
ryang@dc-engineers.com

Social Representative

Amanda Johnson
ajohnson@quantumce.com

Past Chair:

Jessica Jenness
jessicajenness@hotmail.com

Upcoming YMF Events

Happy Hours:

November 9 THE SPOT on Main St, Bellevue 5:00 PM

Volunteer Events

November 13 Build Day with Habitat for Humanity, Seattle—8:30 AM—5:00 PM

November 20 Build Day with Habitat for Humanity, Seattle—8:30 AM—5:00 PM

Created in 2007, the Younger Member Forum provides networking and social opportunities to SEAW members 35 and under, as well as new non-member engineers and students. All SEAW members are welcome to participate in YMF functions.

NCSEA Annual Conference Report

by Chun Lau

The 2010 annual conference of the National Council of Structural Engineers Associations (NCSEA) was held recently from September 30 to October 3 in Jersey City, New Jersey. Over 110 attendees from 42 states along with 33 exhibitors attended this sixteenth annual event. SEAW was well represented at this national conference, with Seattle Chapter's Ed Huston, Chun Lau, Greg Schindler, Howard Burton, Dan Yeager, and Scott Douglas attending. Conference attendance was down somewhat due to the economy, although there were a number of attendees from the New York area. The number of vendor exhibitors was down as well as it is a bit more expensive for a vendor to attend the conference in the New York area.

The conference started Thursday morning with a keynote address by Robert LiMandri, Commissioner of NYC Department of Buildings, followed by a series of seminars and presentations, ending with a welcome reception for exhibitors and attendees. Thursday was also the day when the NCSEA Advocacy, SEER, Seismic, SI/QA and Licensing Committees/ Subcommittees met.

Friday's program included a series of seminars and presentations, including a presentation by SEAW's Ed Huston on "Harmonization of Masonry Design Requirements between ASD and SD." James Malley of Degenkolb Engineers, the incoming President of NCSEA, presented an abbreviated seminar of this year's T.R. Higgins Lecture, titled "AISC Seismic Design Provisions: Past, Present and Future." Friday ended with a dinner at Carmine's: a legendary NYC Italian restaurant in Times Square. During dinner, I sat with delegates from Ar-

kansas, Illinois, and Missouri, who shared ideas on how they plan their monthly meetings. It seemed that everyone had tried lunch meetings and informal dinner meetings in order to increase attendance. It should be noted that all of them provide member discounts for members attending their monthly meetings. Also, some of them have their meetings at a public facilities or on a college campus to cut down costs.

Saturday started off with a roll call and a brief report from each state's member organization (MO). There were 37 MOs represented. Next the NCSEA committee chairs gave reports on their committees' activities and accomplishments. With the new 16-hour structural examination by NCEES coming in April 2011, the licensing committee and continued education committee reported that they have been active in preparation for this change. The licensing committee has been encouraging MOs across the country to use this opportunity to discuss with their licensing boards in moving toward separate licensing of structural engineers as well as a practice act similar to our state. The continued education committee reported that they have been working with DF Institute Inc. d/b/a Kaplan Architecture and Engineering to develop a series of webinars that will prepare engineers for the new 16-hour exam. The publication committee reported that their first major publication titled "Guide to the Design of Diaphragms, Chords, and Collectors Based on the 2006 IBC and ASCE/SEI 7-05" is a success and has sold around 1,700 copies so far, with a half-day short course on the guide presented in OH, OK, TX, LA, VA, KY, and MO. SEAW is in the process of organizing the half-day seminar in Seattle in the near future:

Ed Huston Receives NCSEA Service Award

Well-known SEAW Seattle Chapter member Ed Huston was recognized at the National Council of Structural Engineers Association's annual conference award banquet in New York last month when he was presented with the NCSEA Service award. This award is presented to an individual who has worked for the betterment of NCSEA to a degree that is beyond the norm of volunteerism. It is given to someone who has made a clear and indisputable contribution to the organization and therefore to the profession.

Ed has been extremely active in NCSEA, joining the NCSEA Board of Directors in 2004 and ending his term in 2009 as NCSEA Past President. Ed presently serves NCSEA on the Licensing Committee and has been chair of the Code Advisory Committee's General Requirements Subcom-



Ed Huston, right, receives the NCSEA Service Award from outgoing NCSEA president Bill Blast

mittee since 2004. In 2009 Ed became Chair of the New Member Organization Committee.

Ed is the third SEAW member to receive the NCSEA Service award; other SEAW members to receive this notable award are John Hooper in 2005 and Mike Valley in 2008. Ed also received the NCSEA's prestigious James Delahay Award in 2009.

stay tuned for more information.

The outgoing President, Bill Blast presented the NCSEA strategic plan 2010-2015 during the Saturday afternoon session, summarized as follows:

The Vision:

"NCSEA and its Member Organizations constitute the premier professional society for practicing structural engineers in the United States of America."

The Mission:

"NCSEA serves to advance the practice of structural engineering and, as the autonomous national voice for practicing structural engineers, protect the public's right to safe, sustainable, and cost effective buildings, bridges, and other structures."

The delegates broke into six groups to further discuss the six goals identified by the

Board of Directors in achieving the proposed Vision and Mission of NCSEA. The goals are: promote the profession, represent the profession, improve the profession, enhance communications with the MO's, energize committee activity, and ensure financial security.

The conference ended with the Saturday Evening Reception and "Excellence in Structural Engineering" Awards Banquet. SEAW's own Ed Huston was recognized at the National Council of Structural Engineers Association's Annual conference awards banquet when he was presented with a Service Award for his service to NCSEA. It should be noted that the Escala project in Seattle, WA, designed by SEAW's member Cary Kopczynski & Company was the award winner for new building over \$100 million.

NCSEA welcomes volunteers

(Continued on page 7)

Sustainable Design Committee: New LEED Credentials

-by Amanda Schweickert and Luke Ruggeri

To all current and potential future LEED APs :

The requirements to earn and maintain your LEED credentials were changed in 2009. Read below for an update to these requirements, or go to the Green Building Certification Institute's website at <http://www.gbci.org/main-nav/professional-credentials/credentials.aspx>

New LEED credentials

The credential of LEED AP was discontinued in fall 2009 and will no longer be given out. The following new options for LEED credentials are now available (Table 1):

You can become a **LEED Green Associate (GA)** by passing the GA exam, and must receive 15 hours of continuing education (CE) every two years to maintain the LEED GA credential. You do not need to have experience on a registered LEED project if you are employed in a sustainable field, such as structural engineering. Many of the CE hours must be pre-approved by a review board to qualify as part of the 15 hours. In lieu of CE hours, you could retest every two years.

You can become a **LEED AP with specialty (LEED AP+)** by first passing the LEED GA

exam, and then passing another exam in your specialty, with Building Design & Construction (BD+C) being the most appropriate for structural engineers. You must have experience on a LEED project within the past three years to become a LEED AP+. You must receive 30 CE hours every two years to maintain the LEED AP BD+C credentials. In lieu of CE hours, you could retest every two years.

Current LEED APs

If you earned the LEED AP designation prior to fall 2009, you have until August 2011 (exact date varies by individ-

ual, available by logging in to your GBCI profile) to enroll to transition to a **LEED AP+**.

You can do this either by 1) passing the BD+C specialty exam or 2) achieving the 30 CE hours in specific areas of sustainable design as outlined by the GBCI (Table 2). Visit www.usgbc.org for more information about GBCI's *CMP Enrollment Guide* and GBCI's *Credential Maintenance Program Guide*. With option two, you will receive your new credentials and be able to use the new title immediately, with the assumption that you will complete

(Continued on page 6)

Table 1: Types of LEED Accreditation

Title	LEED Green Associate	LEED Accredited Professional	LEED AP without specialty
Eligibility Requirements	1) Agree to disciplinary & exam appeals policy	2) 1) Agree to disciplinary & exam appeals Policy	1) Credentialed under the LEED AP for New Construction v2.0- v2.2 [NC] between January 2001 and June 30, 2009; the LEED AP for Commercial Interiors v2.0 [CI] between June 2006 and June 30, 2009; or the LEED AP Existing Buildings v2.0 [EB] between June 2006 and December 31, 2008
	2) Submit to an application audit	2) Submit to an application audit	
	One of the following:		
	3a) Documented involvement on a project registered or certified for LEED	3) Documented involvement on a project registered or certified for LEED within 3 years of application	
	3b) Employment (or previous employment) in a sustainable field of work		
	3c) Engagement in (or completion of) and education program that addresses green building principles		
Obtaining the Credential	1) Application process	1) Application process	No Longer Available
	2) Multiple choice exam	2) Multiple choice exam	
Application Fee	\$50	\$100	
Exam Fee	Member \$150, nonmember \$200	Member \$300, nonmember \$450	
Specialty Exam Fee		Member \$150, nonmember \$250	
Biannual Maintenance Fee	\$50	\$50	None
Biannual CMP Requirements	15 Hours	30 Hours	None
Designation	LEED Green Associate	LEED AP BD+C, LEED AP HOMES, LEED AP O+M, LEED AP ID+C, LEED AP ND	LEED AP

Sustainable Design Committee, cont'd

(Continued from page 5)

your prescriptive CE hours within two years of your enrollment date. In order to maintain the LEED AP+ credential, you will need to continue earning 30 CE hours or retest every two years, just as a new LEED applicant would. You will never lose your LEED AP status, even if you fail to maintain your CE

hours for LEED AP+ at some point in the future.

If you do nothing by October 2011, you will be able to keep your **LEED AP** designation forever, and never need CE hours or need to pay a fee. You will continue to be listed in the USGBC membership directory and be allowed to practice as a LEED AP. If in the future you wish to also get the LEED AP+ designa-

tion, you will need to start from the beginning, as described above for New LEED credentials.

Opinion Piece Follow-up

Next month the SEAW Sustainable Design Committee will be publishing an opinion piece follow-up to this article. We will explore the opinions of several practicing structural engineers with regards to the relevance and chal-

lenges of obtaining, maintaining, and/or updating their LEED status. If you would like to contribute your opinion to the article please email Luke Ruggeri at lruggeri@degenkolb.com or Marjorie Lund at Marjorie@lundstructural.com.

Table 2: What Do I Do Next as a LEED AP?

	Option 1*	Option 2*	Option 3**
	LEED AP+ Upgrade: Test	LEED AP+ Upgrade: Prescriptive Credential Maintenance	Do Nothing
Eligibility Requirements	1)LEED AP credentialed under New Construction v2.0-v2.2	1)LEED AP credentialed under New Construction v2.0-v2.2 2) Enroll in initial reporting period within the first 2 yrs (date is dependent on your last name)	1)LEED AP credentialed under New Construction v2.0-v2.2 2)Did not enroll in initial reporting period within the first 2 yrs
Obtaining the Credential	1) Agree to disciplinary & exam appeals policy	1) Agree to disciplinary & exam appeals policy	
	2) Application process	2)Maintain CMP in a 2 yr cycle after enrollment	
	3)Take the specialty exam , and pass between 3-12 months from the end of their reporting period		
Application Fee	\$100		
Exam Fee	N/A	N/A	
Specialty Exam Fee	Member \$150, Nonmember \$250		
Biannual Maintenance Fee	\$50	\$50	
Biannual CMP Requirements	30 Hours	30 Hours	
Designation	LEED AP BD+C***	LEED AP BD+C***	LEED AP

*If you take the option 1 or 2 route, you are maintaining and continuing to learn about sustainability as a LEED Accredited Professional.

**If you take the option 3 route, you can still practice as a LEED AP.

***This is the most appropriate for structural engineers.

Meetings, Seminars, Announcements

ATC-20 Training Postponed to New Year

Due to loss of the scheduled meeting space, the ATC-20 training planned for Wednesday, November 17th had to be cancelled. Refunds have been issued to all paid registrants. The training will be rescheduled in January or February 2011. Watch the SEAW website www.seaw.org for updates.

PEER Workshop: Performance-Based Seismic Design Guidelines for New Tall Buildings

November 30, 2010
2:00—5:00 PM
[Red Lion Seattle](#)
1415 5th Ave

The Pacific Earthquake Engineering Research Center (PEER) has coordinated a major multi-disciplinary project to develop performance-based seismic design guidelines for new tall buildings. The project

brought together experts from academia and private practice to develop such guidelines. Supporting research and development case studies were also implemented to assist the development of the guidelines. The guidelines document is now complete. The purpose of the workshop to present and elaborate the key items in the seismic design guidelines. Practicing engineers, building officials, and researchers in academia are encouraged to attend.

Workshop Presenters:

Jack Moehle, University of California Berkeley

Ron Hamburger, Simpson Gumpertz & Heger

C.B. Crouse, URS

John Hooper, Magnusson Klemencic Associates

This workshop is valued at 2.5 PDH's. It is open to the public, free of charge, and registration is not required.

Mentor Opportunities

If you are interested in being a mentor for a night for college students, the Puget Sound Engineering Council (PSEC) and the University of Washington need your help! The purpose of the mentor night activity has been to bring as many practicing engineers together with as many students as possible.

A typical agenda for the PSEC mentor nights will include a welcoming and introduction, potentially a brief panel discussion by young engineering professionals, then breakout sessions where young and experienced engineers discuss their engineering experiences with the students. Students will rotate between mentors and tables to get a broad overview of answers to their questions.

PSEC Mentor Night:

University of Washington
Bothell Campus, Tuesday,
November 16, 2010, 6:00 to
8:00 PM, at Mobius Perform-

NCSEA

(Continued from page 4)

who are willing to actively serve to promote the cause of structural engineering by participating on one of the committees. If you are interested in getting involved with an NCSEA committee, please check out the website at www.ncsea.com for more information. You can also contact any of the following individuals:

Chun Lau, NCSEA Delegate
cclau@comcast.net

Ed Huston
Huston@smithhustoninc.com

Scott Douglas
sdouglas@dcj-engineers.com

Next year's NCSEA Conference is scheduled for October 20 -22 in Oklahoma City, OK, and promises to be as inspiring and informative as this years' conference.

Have You Paid Your 2010 SEAW Dues?

Our records show these members as unpaid

Applegate, Douglas
Baca, Noel
Baerwald, Dennis
Bishop, Erik
Bonner, Kevin
Bragdon, Jim
Brazil, Philip
Brown, Thad
Chappel, Julie
Christopoulos, Adam
Countiss, Anatalia
Dinsmore, Charles
Dorn, Gerald
Edmiston, Steven
Evanger, Derry
Gatto, Kip
Gilliland, Jeffrey
Glen, Kyle
Goodwin, Jeffrey
Griebenow, Robert
Hagensen, James
Hawksworth, Richard
Hjert-Bernardi, Maritzah
Hodges, Norman
Hornsby, David
Jacobson, Gregory
Jacobson, Jennyfer

Johnson, Alan
Johnson, Matthew
Johnston, Darren
Kimmerling, Robert
Koekemoer, Rocco
Kumar, Dinesh
Langton, Thomas
Larsen, Russell
Lee, Greg
Lee, Thomas
Lindblom, Patrick
Ludwig, C Adam
McDonald, Theodore
Meacham, Brent
Miller, Richard
Moll, Brian
Moore, Keith
Mow, Kai Ki
Murdock, Kyle
Ng, Sarah
Nguyen, Quyen
Nishina, Craig
Norlin-Voegele, Natosha
Olson, Craig
Peterfreund, Sean
Poshusta, Cathy
Povolny, Oldrich

Powers, Richard
Roberge, Shawn
Ryan, Patrick
Sadhvani, Lavina
Sandbo, William (Bill)
Shaw, Christopher
Showalter, Luke
Stainer, Craig

Stevens, Robert
Walkenhauer, Brian
Waugh, Charles
White, Christopher
Wies, Mathew
Wyble, Richard
Young, John Lowell
Yu, Jin

INSTRUCTIONS FOR PAYING YOUR DUES ONLINE:

1. Go to www.seaw.org
2. Log in to the member area (Default login name is your email address; password is your first name.)
3. Click on "My Membership" in the menu bar
4. Select "Membership Renewal" in the gray menu bar to see if there is an outstanding invoice.
5. Select the invoice and Follow the prompts to pay your dues online using your VISA or Mastercard.
6. When your payment has been made, you will receive an automated receipt by email.

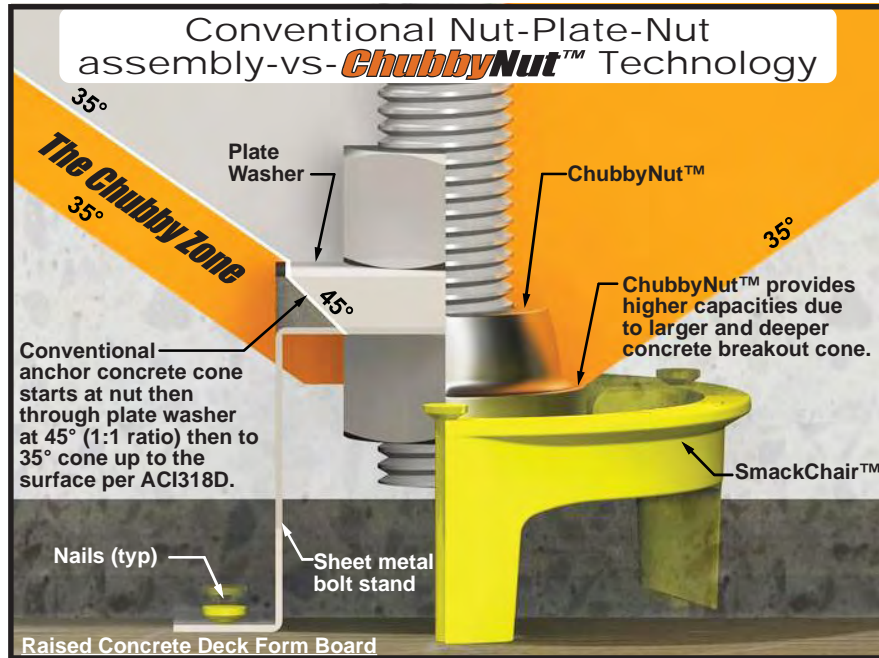
Have you forgotten your Login Information? Simply click on "Forgot Password" under the Member sign in area and enter your email address. Your information will be sent to the email address associated with your membership.

Increase Uplift Capacity

Optimize slab design thickness - Simplify anchor design - Specify with Confidence.



ACI 318 Appendix D
Calculations available
at ChubbySmack.com
U.S. and foreign patents pending.



ChubbySmack™
CONCRETE ANCHOR PRODUCTS
www.chubbysmack.com

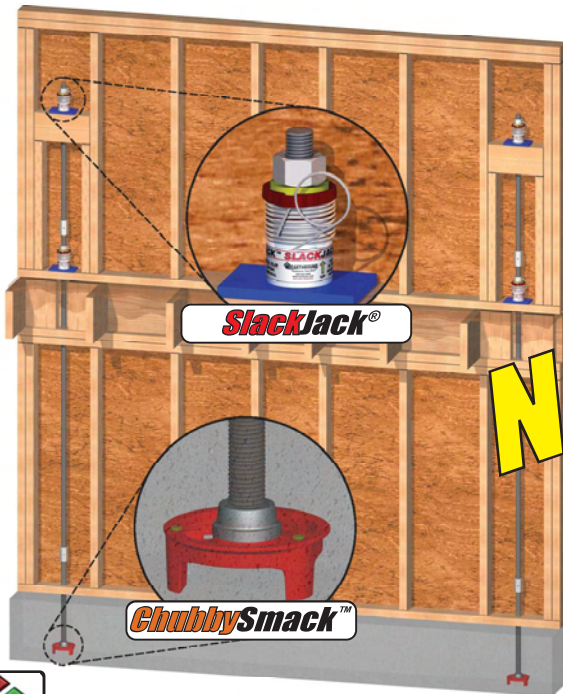
EARTHBOUND CORPORATION
17361 TYE STREET SE
MONROE, WA 98272

www.holdown.com
Phone: 800-944-5669
Fax: 360-863-0724

ChubbySmack.com

EARTHBOUND's NEW Online Design Tool!

Optimize design time - Simplify design, installation & inspection - Specify with Confidence.



New!

WOOD FLOOR LEVEL	UPLEFT TENSION LOADS	CALCULATED DIFFERENTIAL LOADS	ACCELERATED DIFFERENTIAL LOADS	WOOD COMPRESSION LOADS
1st	6000	6500	6000	6500
2nd	8000	2000	2000	8000
3rd				
4th				
5th				
6th				
7th				
8th				
9th				
10th				

BRIDGE LEVEL

Swivel Washer	Yellow
SlackJack	Yellow
Plate	A415 Red
Bridge Lumber	#6/6x6

2nd LEVEL

Rod Snap	RE
Coupler	C6C
Swivel Washer	Yellow
SlackJack	Yellow
Plate	A415 Red
Rod Steel	R6

1st LEVEL

Rod Snap	RE
Coupler	C6C

ANCHOR PARTS

Anchor Rod	A85
Nut	N6
Plate	AF2
Chair	CHR15-13
Nut	N6

BRIDGE BLOCK POSTING SCHEDULE

<< 4 Inch Wall Condition
2x4 + (HD Bay) + 2x4
6 Inch Wall Condition Below
2x6 + (HD Bay) + 2x6

POSTING SCHEDULE

4 Inch Wall Conditions
(2) 2x4 + (HD Bay) + 2x4
3x4 + (HD Bay) + 3x4
6 Inch Wall Condition Below
2x6 + (HD Bay) + 2x6

ICC ES U.S. GREEN BUILDING COUNCIL MEMBER

RunBuilder™ generates calculations and CAD details in PDF/DXF for specific run types for your project!



RunBuilder.com
SPECIFY THE EARTHBOUND SYSTEM™
FEATURING THE SLACKJACK® (ICC ESR-2848)

For more information about the EARTHBOUND SYSTEM, visit www.holdown.com.
US Patents: 7,762,030 7,665,258 7,617,642 7,340,867 7,159,366 6,951,078 6,688,058 6,494,654 6,161,350, other US & Foreign Patents Pending.

RunBuilder.com

Meetings, Seminars, Announcements

ing Center Hall. To participate, sign up online at www.pseconline.org/Events/MentorNights/SignUp

UW Engineering Networking Night.

Nov. 17th from 6-8pm. If you wish to participate, you may register on the site below.

<http://www.engr.washington.edu/alumcomm/exploration.html>



STRUCTURAL ENGINEERS ASSOCIATION 2011 NW CONFERENCE

SEAW SEAO SEAI BC

Hosted by:

Spokane and South Central Chapter SEAW

Thurs Sept. 22nd & Friday Sept. 23rd, 2011

Red Lion Inn at the Park Spokane, WA

EARN UP TO 10 PDH'S
INNOVATIVE TECHNICAL TOPICS
PROFESSIONAL NETWORKING
YOUNG MEMBER'S FORUM
FEATURED PROJECT
EXHIBITORS

Would your firm or organization like to participate?

Contact seaw@seaw.org

Opportunities

Senior Structural Engineer

CASE Forensics is a well-established forensic engineering firm that provides high quality forensic and multi-discipline engineering consulting/testing services. Primary services include fire investigations, product/system failure analysis, mechanical, electrical, and material analysis, structural/architectural damage evaluations and repair design, and accident reconstruction. Our current need is for an experienced and licensed Structural Engineer to join our Seattle, Washington team. We are looking for an articulate, confident, and professional individual who has excellent writing skills and experience in structural/architectural failure analysis, and structural design work related to buildings of all construction types.

The focus of this position will be to determine the cause and nature of structural and other types of construction failures. Some repair design is required. The ideal candidate is a self-starter who can establish and maintain client contacts and has a drive for building a business. CASE Forensics fosters an environment where the common goal is success and continued growth.

Minimum License Requirements

- WA State SE License required or the ability to obtain SE license through immediate reciprocity.

Minimum Requirements

- 10 + years of structural design and/or failure analysis.
- Extensive experience in the design or failure of wood frame, concrete, and metal commercial and residential structures.
- Willing and capable of performing hands-on investigations and working multiple assignments.
- Must be able to work effectively with the insurance, property management, and legal communities.
- Must possess the ability/experience to market services to potential clients.
- Must have excellent customer service, communication (written and verbal), and project management skills.
- Must have experience in failure/damage analysis, building codes, and construction best practice.
- Some travel required, primarily within the Pacific Northwest.
- Relocation costs may be considered.

Compensation / Benefits:

In addition to a competitive salary and a unique working environment, our benefits package offers full medical & dental (100% paid for employees), vacation, sick leave, and 401K.

Submission Instructions

If you are interested please send your resume to wwolfert@case4n6.com

Senior Civil Engineer

Seattle City Light is seeking a Senior Civil Engineer to supervise or perform senior-level professional civil engineering work in the planning, design, construction, operation and maintenance of municipal public works, utilities and services projects. This position will report to the Civil Engineer Supervisor in the Generation Mechanical/Civil Engineering unit.

Job responsibilities include:

Prepare civil and structural designs for hydroelectric plants, electric transmission, distribution and substation facilities; project engineers and lead presenter on different programs

Perform structural calculations, structural inspections, prepare engineering studies, and prepare project schedules, budgets

ets and cost estimates; technical expert and lead technical team; work with consultants, monitor progress.

Complete details can be found at:

<http://www.seattle.gov/light/>

Requirements:

Education: Bachelor's Degree in Civil Engineering or Civil Engineering Technology

Experience: Requires five years professional civil engineering experience.

Certification/License: PE License as a Civil Engineer in Washington State or ability to obtain one through community, and a current Washington State Driver's License or equivalent mobility.

Additional Information:

Salary-\$41.15 - \$47.91 Hourly
Type-Classified Civil Service, Regular, Full-Time

Please apply directly to:

<http://www.seattle.gov/light/>

HELP WANTED ADS are accepted through the fourth Friday preceding the publication month. The cost for text ads is \$65 per insertion **pre-paid**, with discounts for multiple runs. Ad copy should be limited to 200 words or less and must be submitted by e-mail. Advertising order forms and information about display advertising, can be found on our website at: http://www.seaw.org/resources_newsletter.cfm

TIME TRACKING | PROJECT MANAGEMENT | BILLING



Frustrated with Deltek?

Join *Thousands* who discovered the advantages of switching to BillQuick



"BillQuick gives me a very simple, cost effective solution to time tracking and billing. I replaced a very non-graphical, expensive finance system with BillQuick."

-Judy Ashley, Former Deltek User

CALL TODAY TO ASK ABOUT DELTEK CONVERSION

BillQuick.com | 888-BILLNOW
(245-5669)

TOP **7** Reasons Why Firms Switch To BillQuick

1 Easy Data Conversion

Let BillQuick help you get up and running quickly with our built-in data conversion tools.

2 Cut Billing Time By 50%

With our powerful smart batch billing you will never create an invoice again. Instead you will review, approve and send them in half the time.

3 Over 100 Professional Invoice Templates

Fourteen years of experience has helped us develop eye catching professional invoice templates that will enhance your corporate image.

4 Time & Expenses... Anytime, Anywhere

With our Web Suite and Mobile pack you and your staff can access project data and enter time from anywhere, anytime.

5 Reports that Help You Increase Profits

With over 350 reports, BillQuick will help you monitor your key performance indicators in real-time.

6 Lower Cost of Ownership

"The funny thing about BillQuick is that it costs less than Deltek and does more!"

-Joe South, CFO

Project Engineering Consultants Ltd.

7 Simple Yet Powerful Project Management

Manage your budget, resources and costs with BillQuick's built-in project management tools.

Call us today for
a **FREE** Trial Copy

888-BiLLNOW
245-5669

www.BillQuick.com

**DCAA
COMPLIANT**





STRUCTURAL ENGINEERS ASSOCIATION of WASHINGTON • Seattle Chapter

PO Box 44 • Olympia WA 98507 • 206/682-6026 • www.seaw.org

Seattle Chapter Committees & Chairs

House/Program	Peter Opsahl
Refresher Course	Mark Moorlegghen
Membership	Cheryl Burwell
Newsletter	Lynnell Brunswig
Presentations/Awards	Andrew McGlenn
Engineer of the Year	Ed Huston
Governance	Howard Burton
Committee Oversight	Tom Bykonen
YMF	Dan Yeager

Statewide Committees & Chairs

Code Advisory	John Hooper
Earthquake Engineering	Tom Xia
Building Engineering	Scott Beard
Existing Buildings	Peter Somers
Professional Practices	John Tawresey
Wind Engineering	Scott Douglas
Exam Liaison	Ed Huston

Scholarship	Bill Mooseker
Legislation	Matt Toton
Education	Joe Ferzli
Finance & Auditing	Ted Smith
Disaster Prep/Response	Paul Brallier
Public Information	Cale Ash
Sustainability	Marjorie Lund
Snow Load	John Tate
SEAW Historian	Don Northey

For Committee contact information, visit www.seaw.org and click the Committee page

Got Structure?

(Structure Magazine, that is)

All dues paying Members of NCSEA's Member Organizations receive a subscription to *Structure Magazine*. If you are not currently receiving this excellent publication, contact the SEAW office at seaw@seaw.org. We'll see that your subscription is registered.

Membership

Membership Applications

Fred J Barker
Coffman Engineers Inc
BSCE 2008, MSCE 2010, Washington State University
Class: Associate

Applications Accepted

Herb Ahten, Professional Associate
Diana Flores, Professional Associate
Emily Hooper George, Professional Associate

Membership Classification Changes

Amanda Johnson: from Associate to Professional Associate
Joshua Yunker, Professional Associate: resigned—left area

SEAW Calendar

NOVEMBER, 2010

Wed	9th	YMF Happy Hour THE SPOT on Main St, Bellevue, 5PM
Sat	13th	YMF Volunteer Event Build Day with Habitat For Humanity
Tues	16th	Seattle Chapter Dinner meeting Location TBA
Fri	19th	Seattle Chapter & State Board meeting
Sat	20th	YMF Volunteer Event Build Day with Habitat For Humanity
Fri	26th	December Newsletter Deadline
Tue	30th	PEER Tall Buildings Workshop Location TBA

COMPACTON GROUTING

The Performance Company

THE PRESSURE GROUT COMPANY
More than 45 Years of Innovative Grouting

Densifying, Solidifying, Improving Soils
Mitigation of Soil Liquefaction
Tie-downs & Tiebacks/Anchors
Thwarting Soil Settlements
Stone Columns
Vibrated Concrete Columns
Rapid Impact Compaction

206•621-0900
E-mail: pgc@pressuregrout.com
www.pressuregrout.com

CHEMICAL GROUTING

LENS GROUTING

PRESSGROUT PILES