

F.W. Moffat and Family

PENLAKE HISTORICAL COMMITTEE - 2016

ALL PHOTOS TAKEN BY F.W. OR HIS SON BRYCE MOFFAT, COURTESY OF BRYCE'S SON DAVID MOFFAT

Frederick William (F.W.) Moffat and Catherine (Kate) Janet McNish at their wedding, June 29, 1898.

F.W. was born in Loanhead, Scotland (1865), just south of Edinburgh. He immigrated to Canada with his family in 1871. Kate was born in Lyn, Ontario (1872).

Children include; Bryce Fulford (1900), James McNish (1903), Agnes King (1905), Fredrick William (1906) and Catherine Janet (1912). All were born in Weston, Ontario. The younger F.W. was known as Freddie.





The boathouse still stands today, in 2016, and is currently owned by Derrick and Sonia Muntwyler.

The original Corralyn Cottage, on the Springsyde Shore, was built around 1905 and was moved west along the ice in 1926 to the current John and Debbie Hay cottage, just west of the old Hall (later Musselman) cottage.



1905 – 1909



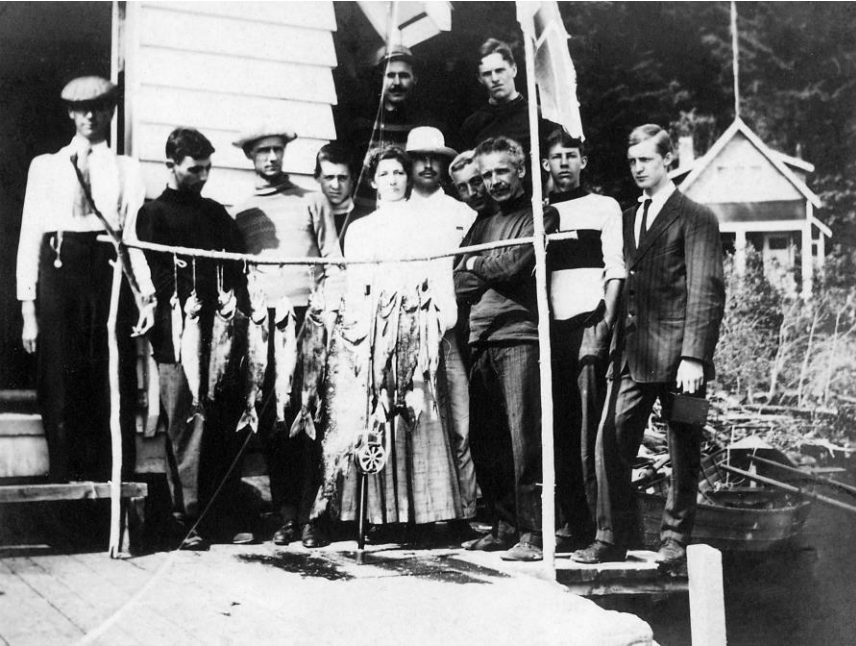
Bryce and Jim Moffat on a raft



Agnes Moffat washing her feet

1905 - 1909

F.W., Agnes, Jim, Bryce, Freddie and Kate Moffat



Fresh catch of the day, on the dock at Corralyn. Kate and F.W. Moffat in the foreground. Rothesay Cottage, owned by J.K. and Annie Moffat, is in the background.



1910 – 1914



F.W. and Kate Moffat with their children; Janet (married Spike Irwin), Bryce (became an engineer and married Peggy), Jim (married Beulah), Agnes (became a doctor and married Dr. Rusty McGee), and Freddie (who was studying to become a doctor, died in a auto/train accident in 1925).

F.W. Moffat holding Janet with Kate, Freddie, Agnes, Jim and Bryce





1910-14

Having lunch on the original Corralyn veranda. Kate and F.W. Moffat at each end of the table, and all the children and cousins.

Although not visible from this photo, there was a wonderful view from here out over Peninsula Lake.

1915-19



Perhaps at Flat Rock.

Back Row: Kate far left, Agnes in middle and Jim Moffat on far right

Front Row: Bryce far left, and Janet far right. Other people not known.



Early transportation to Peninsula Lake

1915 - 1919



Jim, Bryce, Agnes and Freddie Moffat in the back row, and Kate, F.W., and Janet in the front row

Agnes Moffat on the Huntsville dock





1915 – 1919

Picking blueberries. Janet Moffat on the left and Freddie on the right

Freddie Moffat in a dippy





1920 – 1924

Agnes Moffat in
fashionable
bathing costumes



1920 - 1924



Bryce and Agnes Moffat high stepping on a Portage Flyer car

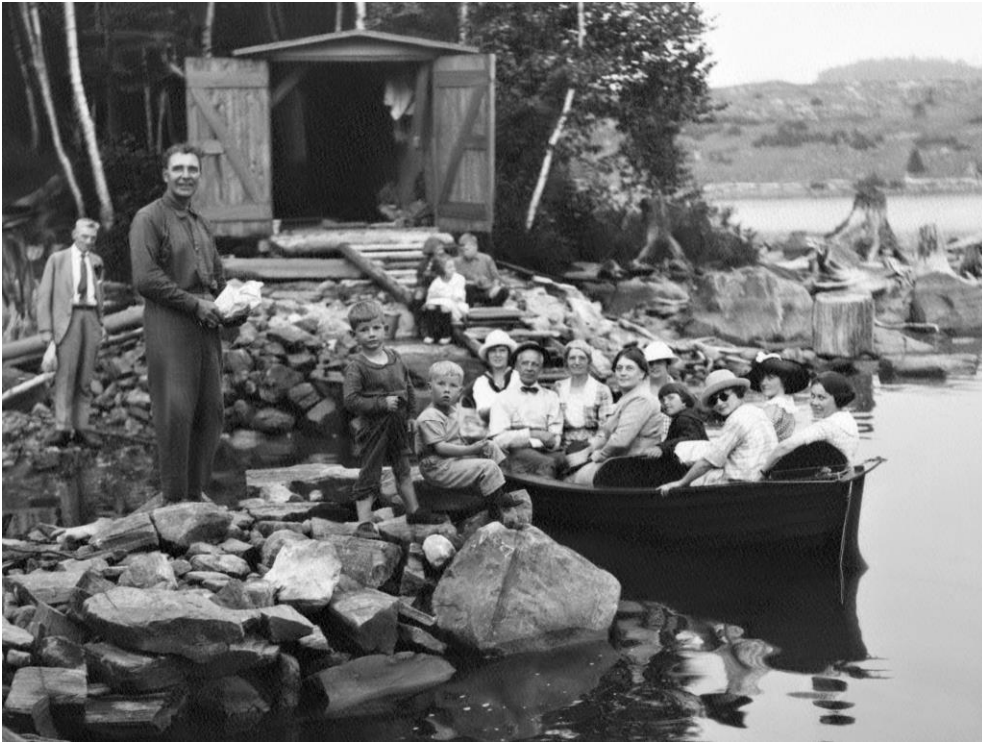
Agnes, Bryce and Janet Moffat

.



1925

FW Moffat bought property near South Portage so the family could picnic and dip in Lake of Bays. He could fish as well. David and Barbara Moffat now have a cottage on this property.





1925-27

Korea was one of the three missionary cottages built by F.W. Given to Bryce and Peggy in the late 1930s, and now owned by Tony and Ann Moffat.

F.W. in the stern of a dippy.
Others unknown





The Algonquin

1926 - 27

Springsyde dock



1926 - 1927



Canoe sailboat with Bryce Moffat at the helm, crew not known.

1955



The same canoe sailboat with Tony Moffat at the helm with friend Rob MacDonald.

1927



Family outing going through the canal

Janet Moffat, later married Spike Irwin and they had four children; Dick and Judy (twins), Cathie and Elizabeth



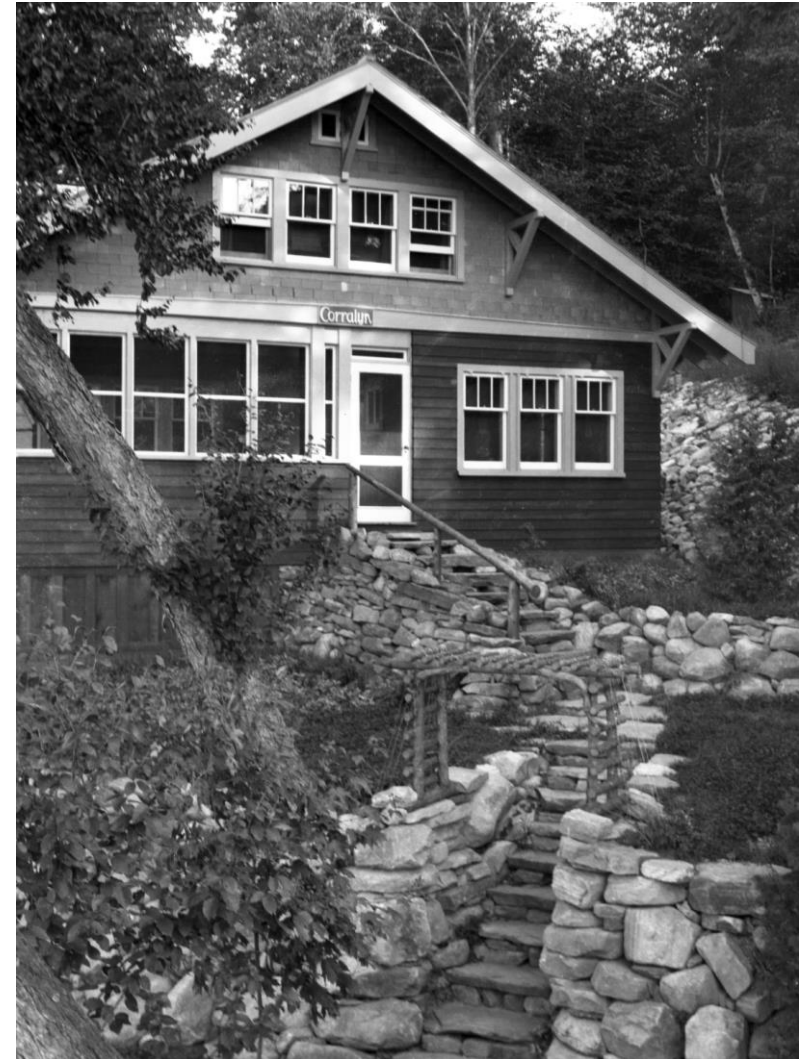
1927



Janet Moffat in a tunic with her mother Kate in the middle



Janet with her dog on the Portage Flyer



Jim Moffat and Beulah Porter were married in 1925 and the original Corralyn was moved over the ice for them in 1926. The new Corralyn was built after that move.

F.W.'s green thumb soon improved the landscaping



1933

Agnes Moffat and
Rusty McGee married
at Corralyn

1939

Peggy Moffat (wife of
Bryce) by the old gas
pump at North
Portage

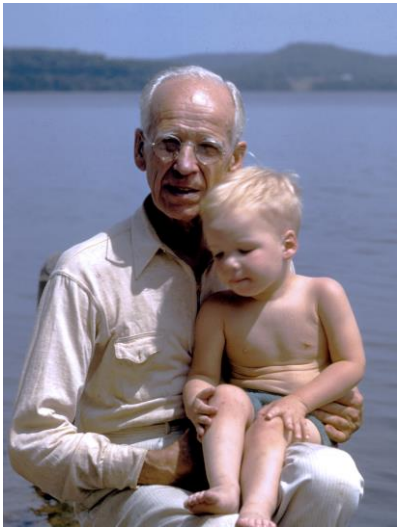




1941-1945



F.W. and Kate Moffat and a growing family.





1947

Algonquin at the
Huntsville dock

David Moffat at the
Huntsville sawmill



1947



FW Moffat gardening with Cathie Irwin and Tony Moffat



Peggy Moffat and her stepmother, Maude Boorman from England, in front of their cottage called Korea. Peggy was married to Bryce Moffat, oldest son of F.W. Moffat and had 2 sons; David and Tony. Tony and his wife Ann currently live in Korea and it is designated a heritage property.

1947



Thomas Lang Moffat III and Jim Moffat had twin boats built by Earl Barnes of Bracebridge. They were respectively called “The Nancy” after Jim’s daughter (Nancy Scarth) and “Will-o-the-Wisp”. The latter won boat races at the CNE in 1936 and 1937.



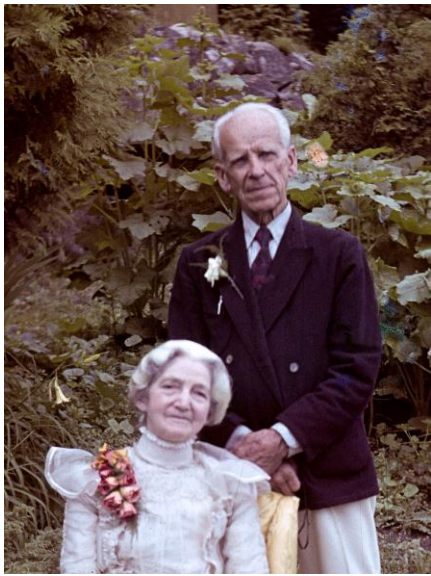
Dick, Cathie and Elizabeth Irwin, and David and Tony Moffat in a punt at Corralyn.



David Moffat in front of Korea cottage, south end of Put-in-Bay. Smart’s cottage in background.



Tony and David Moffat in the row boat that was used as a tender at the RCYC. Tony still uses this same boat.

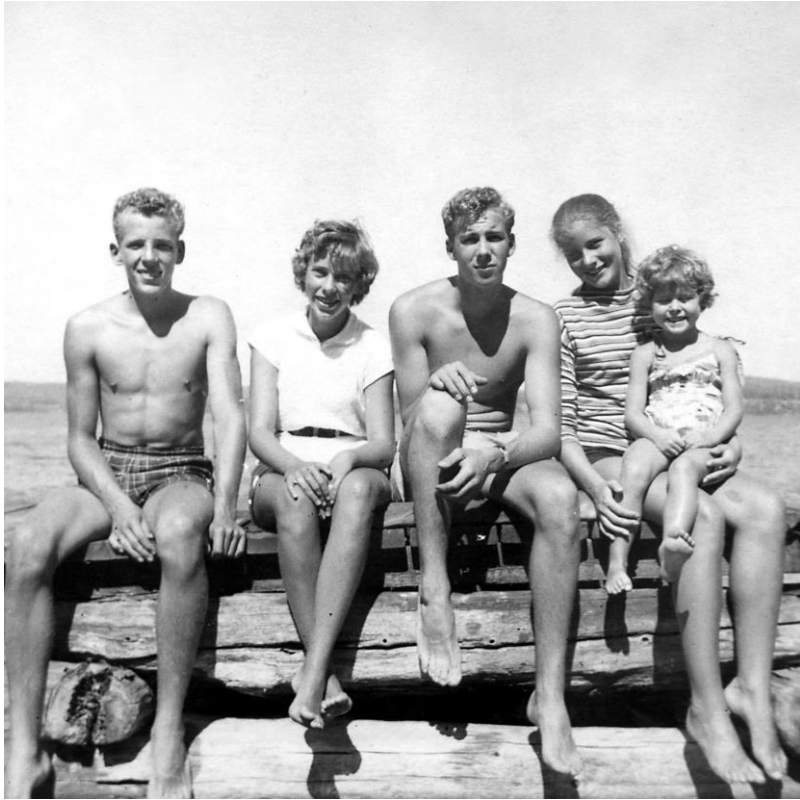


1948



FW and Kate Moffat celebrate their Golden Wedding anniversary at Corralyn. FW died in 1949 and Kate in 1956.





Dick Irwin (twin son of Janet and Spike Irwin), David Moffat (son of Bryce), Judy Irwin (twin of Dick) and Janet Moffat on knee (daughter of Bob and Margaret Moffat)

1955

David Moffat and Judy Irwin with the Iroquois captain and sitting on the deck at the North Portage dock.



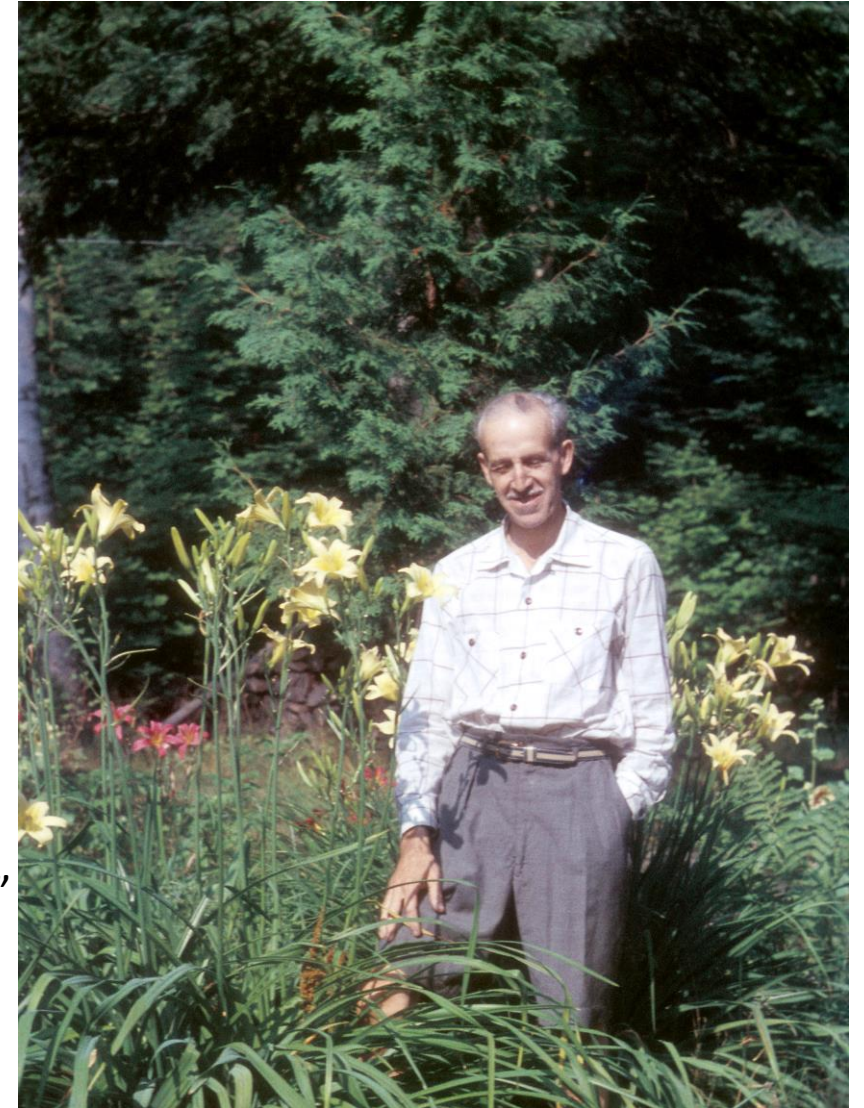


1954

Kate Moffat with David Moffat and his regatta award.

1956

Bryce Moffat beside his prized daylilies at Korea Cottage. Bryce developed many hybrid strains and became known for an early spring bloomer called “Springside” which he kindly offered to many cottagers along the Springsyde shore and around the lake. Many are still thriving today at Korea cottage.





Dippy

A disappearing propeller boat is often referred to as a dippy.

From the early 1920's, there has always be a dippy somewhere in the extended F.W. Moffat family. Beulah Moffat's family had one too.



Jim Moffat's dippy was a familiar sight on Peninsula Lake through the mid 1970's when David Moffat bought it and restored it. Since 1985, it has frequently been on Georgian Bay camping trips out of Snug Harbour or Killarney.



1963 - The wedding of Judy Irwin to Paul Ross at Corralyn

