

# NEQA ON THE NUSHAGAK

2022 Guide



# FISH ON!

Good luck to all the  
participants in  
Nega Derby 2022!



**WEIDNER**  
APARTMENT HOMES

[WEIDNER.COM](http://WEIDNER.COM)

Since its inception, Neqa on the Nushagak has raised close to \$250,000 in cash and in-kind contributions!

With your help, we hope to surpass our 2022 goal to provide more student scholarships and grant funding.

Make a donation at [neqaderby.net/](http://neqaderby.net/) donate (or scan this code).



# Waqaa!

Welcome to the 2022 Bristol Bay Native Corporation Education Foundation Neqa Derby on the Nushagak River. (Pronounced Neh-kah, Neqa is the Yup'ik word for food or fish.)

We are thrilled that you have chosen to visit Bristol Bay and trust you'll enjoy experiencing the bounty of our region of Alaska. This is our fifth year hosting a Neqa Derby to raise funds and awareness of BBNC Education Foundation, while celebrating one of our region's most cherished resources. BBNC Education Foundation provides direct scholarship support to approximately 250 Bristol Bay students each year who are pursuing higher education and vocational training. In addition, the foundation provides grants to support

# Table of Contents

BBNC EF Board	4
Committee	5
Event Agenda	6,9
Thank yous	10
Place Names	12
Tides	14
Cultural info	17
Derby Rules	24
<i>Times/Hours</i>	24
<i>Regulations</i>	25
<i>Catch/Release</i>	25
<i>Prizes</i>	27
<i>Boundaries</i>	28
<i>Reporting</i>	29
<i>Weigh scale</i>	31
<i>General</i>	32
Past Winners	34
My Catch	38
All Sponsors	40

cultural heritage activities that benefit BBNC shareholders and descendants. BBNC Education Foundation puts its highest priority around our values of family, taking care of each other, our environment and Native people. We have utmost respect for subsistence and our communities and are working hard to hold an event that reflects these values. You can learn more about the cultural importance on page 17.

Thank you again for joining us. See you on the river!

Quyana (Thank you),

Marie Paul, Board Chair

## **BBNC EDUCATION FOUNDATION**

111 WEST 16TH AVENUE, SUITE 400  
ANCHORAGE, AK 99501  
(907) 278-3602  
WWW.BBNCEF.ORG

# Alaska's leading broker for insurance, risk management and employee benefit services.

1031 W. 4<sup>th</sup> Avenue, Suite 400, Anchorage, AK 99501 | 907-276-5617



**MarshMcLennan  
Agency**

**MarshMMA.com**

d/b/a in California as Marsh & McLennan Insurance Agency LLC. CA Insurance Lic. 04118131. Copyright © 2022 Marsh & McLennan Agency LLC. All rights reserved.

## Honored to sponsor **Neqa Derby 2022**

### OUR VALUES

Compassion, Dignity, Justice,  
Excellence, Integrity



**Providence**

[alaska.providence.org](http://alaska.providence.org)



## Board of Directors

**Marie Paul**, Board President  
Togiak, AK

**Daniel Cheyette**, Vice President  
Anchorage, AK

**Patrick Patterson III**, Treasurer  
Huntsville, AL

**Andria Agli**, Secretary  
Anchorage, AK

**Jason Metrokin**, Director  
Anchorage, AK

**Michelle Ravenmoon**, Director  
Kokhanok, AK

**Terrence Shanigan**, Director  
Anchorage, AK

**Jayne Selanoff**, Director  
Anchorage, AK

**William Chythlook**, Director  
Puyallup, WA

## Staff

**Aleesha Towns-Bain**, Executive  
Director

**Angela Peacock**, Deputy Director

**Kay Larson-Blair**, Program  
Officer

**Chenita Sorensen**, Program  
Associate

**Seanna Huffman**, Administrative  
Assistant

**Laura Aspelund**, Intern

**Derby Master** – Russell Nelson

**Derby Assistant Master** –  
Carmell Engebretson

**All-round all-star** – Carol Wren

**Cultural ambassadors** – Marie  
Paul and Lucy Andrews

**Volunteer hosts** – Irene Fritze  
and Megan Johnson

**All our fishing ambassadors!**



BBNC Education Foundation thanks  
our 2022 Host Committee for their support!

Cohosts:

**Greg Cerbana**, Weidner Apartment Homes

**Krag Johnson & Heather Handyside**, GCI

Members:

**Peter Van Tuyn**, Besseney Van Tuyn LLC

**Kirk Leadbetter**, Marsh & McLennan Agency

**Preston Simmons**, Providence Alaska

**Diane Kaplan**, Rasmuson Foundation

**Bonnie Paskvan & Jill McLeod**, Dorsey & Whitney

**Jason Metrokin**, BBNC

**Guy Armfield**, Parker, Smith & Feek

**Gabe Kompkoff**, Grant Aviation

**Kevin Sweeney**, Six-7 Strategies

**Ryan York**, BBNC



# Event Agenda

## Friday, June 17

12-5 pm Corporate sponsor river arrivals. Welcome to camp!  
*Get settled and enjoy an afternoon of getting to know your camp.*

---

## Saturday, June 18

6 am NEQA DERBY 2022 Opens

---

Noon Weigh station opens at Toman's Camp

---

12:30- Traditional Welcome

1:30 pm Opening Community Lunch at Toman's Camp  
Native food lunch and cultural activity

---

1:30 pm Boat Mix-Up *(Participants will be assigned a boat for afternoon fishing.)*

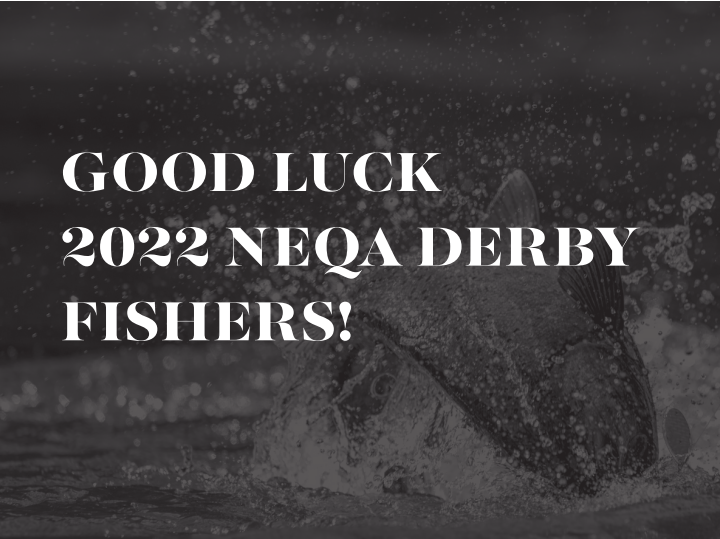
---



2 pm	Weigh station closes at Toman's
4 pm	Weigh station opens at Alaska Kingfishers - All Boats to Kingfishers!
4 pm	Silent Auction Opens at Alaska Kingfishers
4:30 pm	Neqa on Nushagak Cocktail Gathering at Kingfishers Camp. Join your host RC Woodson and guest bartender Guy Armfield to celebrate our first full day on the river!
6 pm	Weigh station at Kingfishers closes. Participants depart to home camps.
6:30 pm	Dinner at home camps.

### **From a BBNC EF Scholarship Recipient...**

*"Because of your scholarship, I can pursue a degree in mechanical engineering, and I can focus on maintaining my 3.98 cumulative GPA. I can spend my free time focusing on my coursework rather than working full-time to pay for my education. In the future, I will not have to worry about paying off debt from student loans and I will be able to comfortably find a career job. Your generous support will not only help me now, but far into the future as well and for that I cannot thank you enough."*



# GOOD LUCK 2022 NEQA DERBY FISHERS!

STRATEGIES 360 IS PROUD TO  
SUPPORT BBNCEF SCHOLARSHIPS  
AND PROGRAMMING.

[STRATEGIES360.COM](http://STRATEGIES360.COM)

**S360**

# Event Agenda continued

## Sunday, June 19

---

6 am All-day fishing!!

---

Noon Toman's Weigh station opens.

---

Lunch *Lunches will be provided by camps to enjoy on the river.*

---

2 pm Weigh station at Toman's closes

---

4 pm NEQA DERBY 2022 CLOSES • Weigh station at Kingfisher's opens

---

5:30 pm Dinner, Silent Auction, LIVE Music & Derby Award Ceremony • *Join us for an all camp gathering to celebrate Neqa on the Nushagak at Kingfishers (Music details: page 22)*

---

6 pm Weigh station at Kingfishers closes

---

## Monday, June 20

---

8 am-Noon Sponsor Teams depart

---

# Thank You!

We thank all the volunteers who are so dedicated to making this event successful! Neqa on the Nushagak would not be possible without the contributions of staff, board, volunteers, and our awesome hosts camps. Thank you to the whole crew at Mission Lodge, particularly Tiarna Stuhan and Sarah Fullhart, and all our friends at Eva's Wild. Apayuq Moore carves our trophies every year and we love them. Quyana to all for supporting us. Fish on!



## Sponsor Team Hosts

- Toman's King Camp – Andi & Jeremy Toman
- Alaska Kingfishers – Rob Fuentes
- Alaska Salmon Camp – Kent Anderson
- Bear Trail Lodge – Nanci Morris Lyon
- Agulowak Lodge – GCI

## Thank you to our Silent Auction and In-Kind Donors

Alaska Airlines • Alaska Industrial Hardware • Apayuq Moore • B&J's Sporting Goods • Beth Hill • Bristol Adventures • Bristol Bay Babes • Cloudberry Native • Costco • Diamond M Designs • Diana Gamechuck • Eva's Wild • Everts Air Cargo • Fishewear • Kim Williams • Miir • Oomingmak • Patrick Lind • Seattle Kraken • Skinny Raven • Steven Heyano • Tom Douglas Restaurants • Ulu Factory

# SUPPORTING INDUSTRY AND ECONOMIC DEVELOPMENT IN ALASKA

*with Insurance, Employee Benefits,  
and Risk Management Consulting.*



**COMMERCIAL INSURANCE**

**EMPLOYEE BENEFITS**

**PERSONAL INSURANCE**

**RISK MANAGEMENT**

**SURETY**

*Rooted in Alaska  
for over 30 years*

[www.psfinc.com](http://www.psfinc.com)

#thePSFdifference

# Place Names

Connections with land are essential to Bristol Bay culture. Each place has a story. Where there are berries or salmon, there are names. These place names were not written on paper, but kept in a community's understanding of its place. Here are a few place names near the Nushagak.

## **Ilgayaq - Nushagak River and name of Bristol Bay**

*Def: Possibly means a place to hide – the root word of ilgayaq is “iiq” to hide.* Everyone could identify the location on a map, but no one could explain the meaning of the name. Elders said it's a name that the elders were born into, and is a river name that people long ago named and our generation and their generation know it with no meaning.

## **Curyung: Dillingham: Choggiung**

*Def: Possibly related to murky, dirty like tea.* Located at the extreme northern end of the Nushagak Bay in northern Bristol Bay at the confluence of the Wood and Nushagak Rivers.

## **Akulivikcaq – Ekwok Lodge**

*Def. - Area between.* May be simply a place name or may reference the small creek that formerly divided the site into two equal parts. Located on the west bank of Nushagak River approximately 5 kilometers downstream of Ekwok. This was considered an important site and one of the largest on the river.

## **Iquaq – Ekwok**

*Def: End of bluff.* Located on the right bank of the Nushagak just above the mouth of Klutuk Creek, 43 miles northeast of Dillingham. It is the oldest continuously occupied Eskimo village on the river. The first post office established in 1935 known as “Ekwok.”

**More details and an interactive map: [www.bristolbayonline.com](http://www.bristolbayonline.com).**



In everything we do - from oil field services, to land management, we strive to nurture our connection to the land and strengthen our Native way of life.

*Leader In All We Do*



[www.doyon.com](http://www.doyon.com)

# TIDES

The closest tide station is 27 miles away in Dillingham-Snag Point. There will be some variation depending on what part of the river you're fishing.

## SATURDAY, JUNE 18

**Sunrise / 5:19 am      Sunset / 11:46 pm**

---

**High Tides / 7:53 am (24) / 7:44 pm (16.9)**

---

**Low Tides / 1:29 am (-2.1) / 2:41 pm (3.8)**

---

## SUNDAY, JUNE 19

**Sunrise / 5:19 am      Sunset / 11:47pm**

---

**High Tides / 8:45 am (23.6) / 8:49 pm (17)**

---

**Low Tides / 2:29 am (-1.3) / 3:35 pm (2.7)**

---

## MONDAY, JUNE 20

**Sunrise / 5:19 am      Sunset / 11:47 pm**

---

**High Tides / 9:36 am (23) / 9:56 pm (17.1)**

---

**Low Tides / 3:29 am (-.03) / 4:29 pm (1.7)**

---





**Besseney & Van Tuyn LLC**

***Specializing in Elder and  
Environmental Law***



*Thank you, participants!*  
**EDUCATION OPENS UP POSSIBILITIES.**





## **Thank you for your donation!**

This year, we are providing the opportunity to donate your fish heads to the benefit of Bristol Bay elders and community members. Locals value fish heads as a favorite food! Each part of the head has nutritional benefits. Salmon heads are diced and boiled to create a decadent fish head soup.

*“We want to give to our children the fish, and we want to keep the water clean for them ... It was a gift to us from our ancestors, which will then be given to our children.” – Bristol Bay elder*

# because we care

Giving back to the communities in which we live and work is a Dorsey core value. That's why Dorsey & Whitney LLP proudly supports the Neqa Derby and the work of Bristol Bay Native Corporation Education Foundation in its mission to provide support for shareholders to pursue educational opportunities and to promote cultural heritage.



[dorsey.com/anchorage](http://dorsey.com/anchorage)

# CG&L

CASHION GILMORE & LINDEMUTH



CALISTA CORPORATION  
[www.calistacorp.com](http://www.calistacorp.com)



**AT&T**



# Good luck to all Neqa Derby participants!



*And its Member companies*



Aerostar SES



Panhandle Power Solutions



Panhandle Renewable Solutions LLC

865.481.7837

[www.ses-grp.com](http://www.ses-grp.com)



## Milo Matthews

Neqa on the Nushagak is proud to present Milo Matthews LIVE on Sunday, June 19 at Alaska Kingfishers.

Born and raised in Boston, Milo began playing the bass at the age of 12. Through his teens and early 20's, he busked the subways making a living by playing for eight hours a day and he credits the experience with teaching him invaluable lessons about music and performing. Alaska was home for Milo for 10 years before moving to Hawaii. Milo's style of music ranges from jazz, blues, rock, pop, funk to even folk. Join us for a great evening of music.

---







# NFWF

Since its establishment in 2008,  
the Alaska Fish and Wildlife Fund  
has invested more than \$12 million into  
152 projects, leveraging more than  
\$26.9 million in matching contributions  
to generate a total conservation impact  
of more than \$38.9 million.

*[www.nfwf.org/alaska](http://www.nfwf.org/alaska)*

# Derby Rules

Neqa Derby will consist of two parts: the **Weigh-In Derby** and the **Catch and Release Derby**.

## Derby Headquarters and Weigh Station Location

---

The Neqa Fishing Derby will host two weigh station locations. The first station will be hosted at Toman's King Camp. The second hybrid station will be hosted at the Alaska Kingfisher Camp. The derby master will be based at both locations at different times during the event according to a weigh station schedule.

## Derby Times and Weigh Station Hours

---

**The Derby runs from 6 a.m. on Saturday, June 18 and closes at 4 p.m. Sunday, June 19. Fish may be caught at any time during this window.**

**The Toman's weigh station will be open:**

Noon - 2 p.m. - Saturday, June 18

Noon - 2 p.m. - Sunday, June 19

**The Kingfisher's weigh station will be open:**

4 p.m. - 6 p.m. Saturday, June 18

4 p.m. - 6 p.m. Sunday, June 19

All anglers are eligible, except guides and captains, and those actively engaging in commercial fishing.

## Derby Rules and Regulations

---

- All fishing must be done within the Neqa Derby rules;
- All derby participants **MUST** abide by Alaska Department of Fish & Game sport fishing regulations and be bound by any ADF&G fisheries Emergency Orders in effect at the time of the event;
- Fish caught outside the derby boundaries are not eligible;
- Fish caught outside the fishing times stated above are not eligible. (For example, a fish caught at 5 p.m. on Friday, June 17 is not eligible for the derby);
- Weigh In Derby participants can enter a maximum of 1 salmon per day in their name but may weigh more than 1 fish at the scales.
- There is no limit on the number of Catch and Release fish participants may document and enter.
- Fishing in the Derby must be done with sport fishing gear. All fish must be caught on rod and reel and in a sporting manner. Participants can fish with one rod per Derby ticket.
- All Derby participants must demonstrate that they have recorded their harvest on the back of their fishing license or on their harvest record card as required by regulation.

## Additional Rules for Catch and Release

---

- Fish must be released alive.
- Fish must be kept in water while handling and measured for total length and girth (see details below for measuring fish.) Measurements should be measured to the nearest half inch.
- Photos of the fish must be shown to derby weigh station staff and verified on a weigh station ticket. At least one photo must be a side-view of the fish with a clearly discernable measuring device, indicating both length and width.

**BANK OF AMERICA**



**Liberty  
Mutual<sup>®</sup>**

---

**SURETY**

## PRIZES

---

### Weigh-in Derby

The Derby will award (3) three major prizes for the heaviest salmon weighed during the Derby. Only (1) one major top salmon prize will be awarded per entrant.

- First Prize: 2 RT Alaska Airlines Tickets
- Second Prize: Seattle Kraken premier experience for two
- Third Prize: Orvis fishing waders

### Catch and Release Derby

For each 5 lbs of estimated weight, derby participants will receive a ticket for a drawing for a packaged Eva's Wild Salmon and FisheWear prize bundle i.e., a 20lb estimated King would equate to 4 raffle tickets. Tickets will be pooled, and a winner drawn at the conclusion of the Derby.

### Lodge Trophy

A Lodge Trophy will be awarded to the camp or lodge hosting the angler who catches the heaviest fish in the weigh-in derby.

*Depending on donations, the Derby may choose to issue other prizes, such as guide award, prizes for youth, first fish, last fish, etc.*

### Notes:

---

- Any unclaimed prizes shall be dispensed at the sole discretion of the Derby Committee.
- Following certification, the Derby Committee will notify winners by mail at the address listed on the participant's derby ticket. Prizes not claimed 30 days from the date notification is sent will be forfeited. The Committee may also use the telephone (for contestants with listed numbers) or e-mail (if available) to notify winning participants.

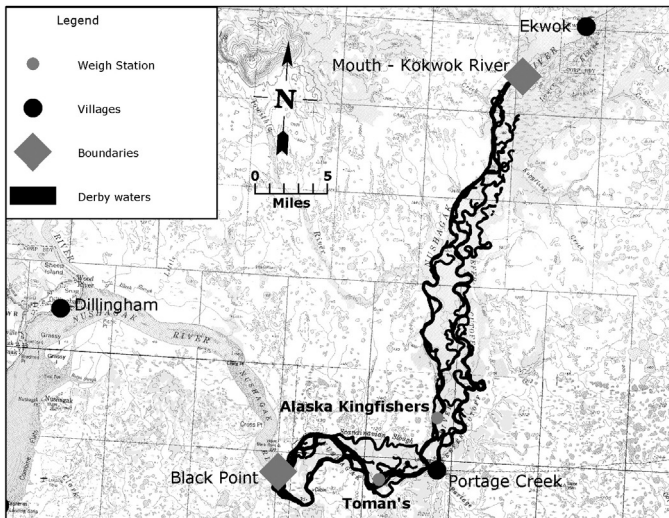
- IRS 1099 forms will be issued in accordance with IRS guidelines to all prize recipients. IRS and State of Alaska Gaming forms must be signed by the prize recipient before prizes are distributed.

## Fishing Boundaries

Neqa Derby contestants can fish the Nushagak River from:

- Mouth of Kokwok River (Upper River Boundary);
- Black Point, (Down River Boundary).

## DERBY BOUNDARY MAP



*Any participants fishing outside the fishing boundaries will be disqualified.*

## Weigh in and Reporting Procedures and Rules

---

- (i) Derby participants may participate in the Weigh-In Derby or Catch & Release Derby, or both.
- (ii) The tickets for Weigh-In Derby are \$100 per ticket and 150 will be available. Tickets for the Catch & Release Derby are \$50 per ticket and 150 will be available. All tickets are good for the length of the Derby. Event tickets will be available throughout the Derby until we are sold out and assigned to one person each. Once the name of the person on the entry ticket is assigned, only fish from that entrant can be weighed in against that ticket. (i.e., you cannot have one person weigh-in fish on a ticket on Friday and a different person weigh-in fish on that same ticket on Sunday).
- (iii) Participants turning in fish to the Derby MUST BE in the weigh scale line up by closing time each day to weigh or submit their fish.
- (iv) Participants weighing in fish MUST provide the weigh scale staff with their valid fishing license with necessary stamps attached for their entry to be validated. Derby staff will verify the Derby ticket was purchased by the participant and participant will sign the ticket agreeing to terms and conditions prior to salmon weigh-in. Additionally, all harvested King salmon must be recorded on the back of a sport fishing license or on a harvest record card.
- (v) All salmon entries must be greater than 28 inches in length (or five (5) pounds in weight).
- (vi) Only salmon that meet the size criteria set out in the Alaska Department of Fish & Game fishing regulations in place at the time of the Derby will be accepted at the scales, no exceptions will be considered.
- (vii) Any person attempting to weigh-in fish caught illegally, not in compliance with Derby rules, caught outside the boundaries, and/or caught outside the derby times will be disqualified immediately.
- (viii) All weigh-in fish, including fish that win 1st, 2nd, and 3rd place prizes, remain property of the individual.

- (ix) In the case of weigh-in ties, the first logged fish weighed will be awarded the higher prize.
- (x) For catch and release derby:
- Fish must be kept in water and measured for total length and girth. The girth is measured at the thickest portion of the midsection and the length is measured from the tip of the nose to the tip of the tail. All measurements should be in inches and to the nearest half-inch.
  - A photo of the fish must be shown to Derby weigh station staff and verified on a weigh station ticket. At least one photo must be a side-view of the fish with a clearly discernable measuring device, indicating both length and width.
  - An weight will be determined utilizing the following formula:

$$\text{(Length (inches) X Girth (inches) X Girth (inches)) / 740 = Weight}$$

EXAMPLE: A K salmon is 52 inches long and has a girth of 30.5 inches. The calculation is as follows:  $\text{Weight} = (52 \times 30.5 \times 30.5) / 740 = (48,373) / 740 = 65.37 \text{ lbs.}$

## From a BBNC EF Scholarship Recipient...

*"Thank you and all the BBNCEF donors for the many years of scholarships I have received – from my years at Brown University for my undergraduate degree to the vocational funding for becoming an EMT and now my three years doing my dual master's degree program in Boston, MA for Physician Assistant and Master of Public Health. I am excited to soon be starting as a PA in Anchorage in Primary Care. Once I become more comfortable as a PA, I hope to provide medical care in rural Alaska!"*



## **Weigh Scale Procedure**

---

When you arrive at the weigh scale you will be directed to a table where staff will look up your Derby ticket and have you verify agreement to terms with a signature, and check for a valid fishing license with king harvest properly recorded.

Please do not park in any fashion that interferes with the normal flow of river traffic.

## **Weigh In Derby**

Derby officials will hang each fish on the scale to be weighed, and the weight recorded. Pictures of anglers and leader board contending fish will be taken before the fish is removed from the scale. All photographs will be the property of the BBNCEF and can be freely used by BBNCEF without limitation.

Anglers, guides and lodges participating in the Derby will be given an option to donate their fish heads, collars and bellies. These donations will be conserved and donated to elders and other Bristol Bay communities.

## **Catch and Release Derby**

Derby officials will record the fisherperson's name, fish length, and girth, and provide drawing tickets for each estimated 5 lb increment (rounding up).

---

# SEALASKA

## General Rules

---

- (i) Derby tickets are non-refundable;
- (ii) the number of Derby tickets sales will be limited to 150 for each Derby (Weigh-In and Catch and Release);
- (iii) by purchasing a ticket and entering the derby, individuals agree to abide by the Derby rules;
- (iv) BBNC Education Foundation, the Neqa Derby organizer, will appoint derby officials to oversee the smooth and fair operation of the event;
- (v) Derby officials may, where necessary, make a ruling on or decisions related to the application of the official derby rules;
- (vi) in the event of any dispute the Derby officials' decisions will be respected and deemed as final;
- (vii) Derby officials shall have the right to conduct further examination or inspection of disputed or suspect catches that are in contention to win any prize, draws or event contests
- (viii) At the close of derby, the Derby Committee shall make its unofficial results available on the Derby website.
- (ix) All complaints of rule violations must be submitted in writing within 24 hours of the end of fishing. The protest must include the alleged rule(s) violation and list corroborating witnesses (if any) that can substantiate the violation. The Derby Committee shall investigate each written protest and respond to all parties in writing as to its decision in the matter.
- (x) Derby certification shall take place no more than fourteen days from the close of the Derby.



# BRISTOL

## ADVENTURES

---

**KULIK** **GROSVENOR** **BROOKS** **MISSION**  
LODGE      LODGE      LODGE      LODGE

**KATMAI**  
AIR

## Waiver of Liability

---

All participants shall recognize that their signature on a Derby ticket is a waiver of liability, absolving BBNCEF, its officers and directors, volunteers and any sponsors of the Derby, of any and all damages or liability growing out of the contest by entering or otherwise participating in the Derby.

## COVID-19 Health Measures

---

The Neqa Derby will observe guidelines and protocols to reduce the spread of the COVID-19 virus and promote the health and safety of the public while conducting derby operations.

## Nushagak River Land Use Program

---

Those individuals planning to enter the Derby and fish off the banks of the river and are not part of a lodge must obtain a Choggiung land use permit. Choggiung Limited is located on 104 Main Street, Suite 201, Dillingham, AK 99576. Office hours in Dillingham are Monday through Friday 8:00 a.m. to 5:00 p.m. You can contact office personnel at 907-842-5218.

## Past Winners

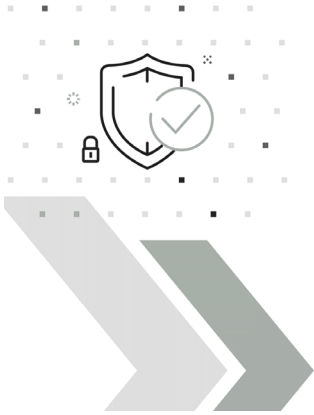
---

### LODGE WINNER

2018 – Alaska Kingfishers  
2019 – Toman’s King Camp  
2020 – Virtual Derby  
2021 – Alaska Salmon Camp

### INDIVIDUAL WINNER

2018 – David Baldwin  
2019 – Maggie Carr  
2020 – Virtual Derby  
2021 – Weigh-in: Lincoln Uyehara  
C&R: Preston Simmons



# Deltek.

## Power Your Projects

---

For nearly four decades, Government Contractors have trusted Deltek with security and audit requirements.

[deltek.com/cloud](https://deltek.com/cloud)

**Transcend**  
STRATEGIC CONSULTING

**Honored to Sponsor the 2022 Neqa Derby**

TSC provides consulting in all areas of government contracting, strategic planning, financial management and market research

[www.transcendstrategic.com](http://www.transcendstrategic.com)

# We measure our success by your success

---

Wells Fargo makes it our business to know your business. We take the time to listen and learn about your business and its operations, growth opportunities, and challenges, so we can offer relevant and informed recommendations.

Talk to Wells Fargo. No matter where you are in your business life cycle, we can help you explore possibilities and capitalize on opportunities.

*Alaska*<sup>®</sup>  
AIRLINES



Stoel Rives<sup>LLP</sup>

# My Catch

NAME \_\_\_\_\_

## Weigh-In Category

CIRCLE DATE

6/19    6/20

TIME CAUGHT

\_\_\_\_\_

WEIGHT

\_\_\_\_\_

WHERE CAUGHT \_\_\_\_\_

CIRCLE DATE

6/19    6/20

TIME CAUGHT

\_\_\_\_\_

WEIGHT

\_\_\_\_\_

WHERE CAUGHT \_\_\_\_\_

CIRCLE DATE

6/19    6/20

TIME CAUGHT

\_\_\_\_\_

WEIGHT

\_\_\_\_\_

WHERE CAUGHT \_\_\_\_\_

CIRCLE DATE

6/19    6/20

TIME CAUGHT

\_\_\_\_\_

WEIGHT

\_\_\_\_\_

WHERE CAUGHT \_\_\_\_\_

CIRCLE DATE

6/19    6/20

TIME CAUGHT

\_\_\_\_\_

WEIGHT

\_\_\_\_\_

WHERE CAUGHT \_\_\_\_\_



## Catch-and-Release Category

$(\text{Length (inches)} \times \text{Girth (inches)} \times \text{Girth (inches)}) / 740 = \text{Weight}$

CIRCLE DATE

6/19 6/20

TIME CAUGHT

\_\_\_\_\_

WHERE CAUGHT \_\_\_\_\_

LENGTH \_\_\_\_\_

GIRTH \_\_\_\_\_

GIRTH \_\_\_\_\_

WEIGHT \_\_\_\_\_

CIRCLE DATE

6/19 6/20

TIME CAUGHT

\_\_\_\_\_

WHERE CAUGHT \_\_\_\_\_

LENGTH \_\_\_\_\_

GIRTH \_\_\_\_\_

GIRTH \_\_\_\_\_

WEIGHT \_\_\_\_\_

CIRCLE DATE

6/19 6/20

TIME CAUGHT

\_\_\_\_\_

WHERE CAUGHT \_\_\_\_\_

LENGTH \_\_\_\_\_

GIRTH \_\_\_\_\_

GIRTH \_\_\_\_\_

WEIGHT \_\_\_\_\_

CIRCLE DATE

6/19 6/20

TIME CAUGHT

\_\_\_\_\_

WHERE CAUGHT \_\_\_\_\_

LENGTH \_\_\_\_\_

GIRTH \_\_\_\_\_

GIRTH \_\_\_\_\_

WEIGHT \_\_\_\_\_

# Our 2022

## Neqa on the Nushagak Sponsors

### **PREMIUM**

GCI  
Grant Aviation  
Rasmuson Foundation  
Weidner Apartment  
Homes

### **COHO**

Alaska Airlines  
Bristol Adventures  
Dorsey & Whitney  
National Fish and  
Wildlife Foundation

### **SOCKEYE**

Bank of America  
Bay Hills Capital  
Bessenyej &  
Van Tuyn LLC  
Calista Corporation  
CCI Alliance of  
Companies  
Doyon Limited  
Liberty Mutual Surety  
Marsh & McLennan  
Agency  
Parker, Smith & Feek  
S360  
SES Group of Companies  
Wells Fargo

### **HUMPY**

AT&T  
Cashion Gilmore &  
Lindemuth  
Deltak  
Providence Alaska  
Six-7 Strategies  
Stoel Rives LLP  
Transcend Strategic  
Consulting

### **FRY**

Sealaska



# Thank You!

# GRANT IS PROUD TO FLY WITH BRISTOL BAY COMMUNITIES.

Quyana BBNC Education Foundation  
for supporting Bristol Bay's cultures  
and future leaders.



Serving the Yukon-Kuskokwim Delta,  
Bristol Bay, the Aleutian Islands,  
and the Kenai Peninsula



GRANT AVIATION

[FlyGrant.com](http://FlyGrant.com)

#UnlimitedAlaskaLove



*Working together to*  
**CONNECT OUR COMMUNITIES**

GCI is a proud sponsor of the Neqa Derby and supports the BBNC Education Foundation's mission in helping shareholders reach their potential.

800.800.4800



[gci.com](http://gci.com)