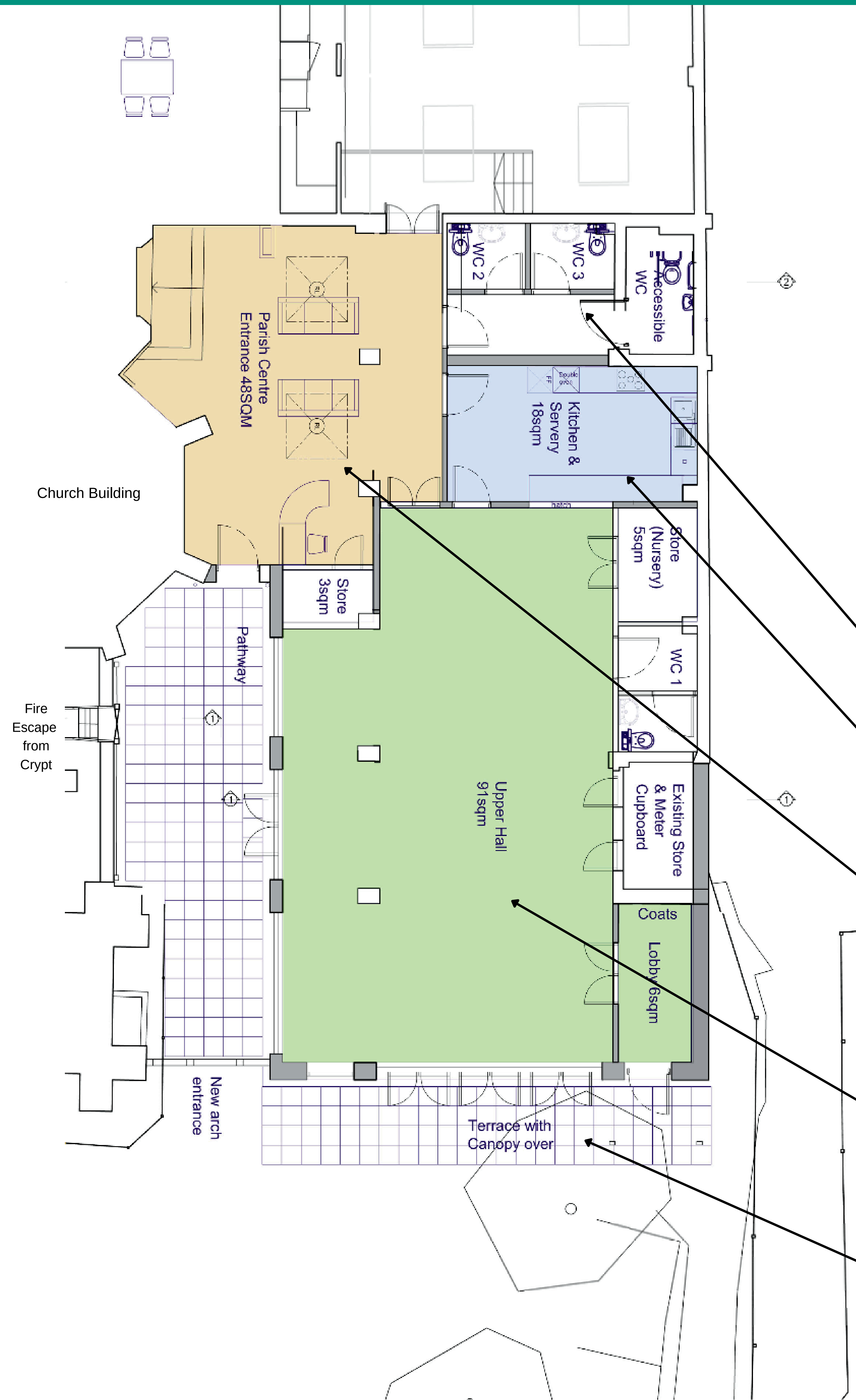
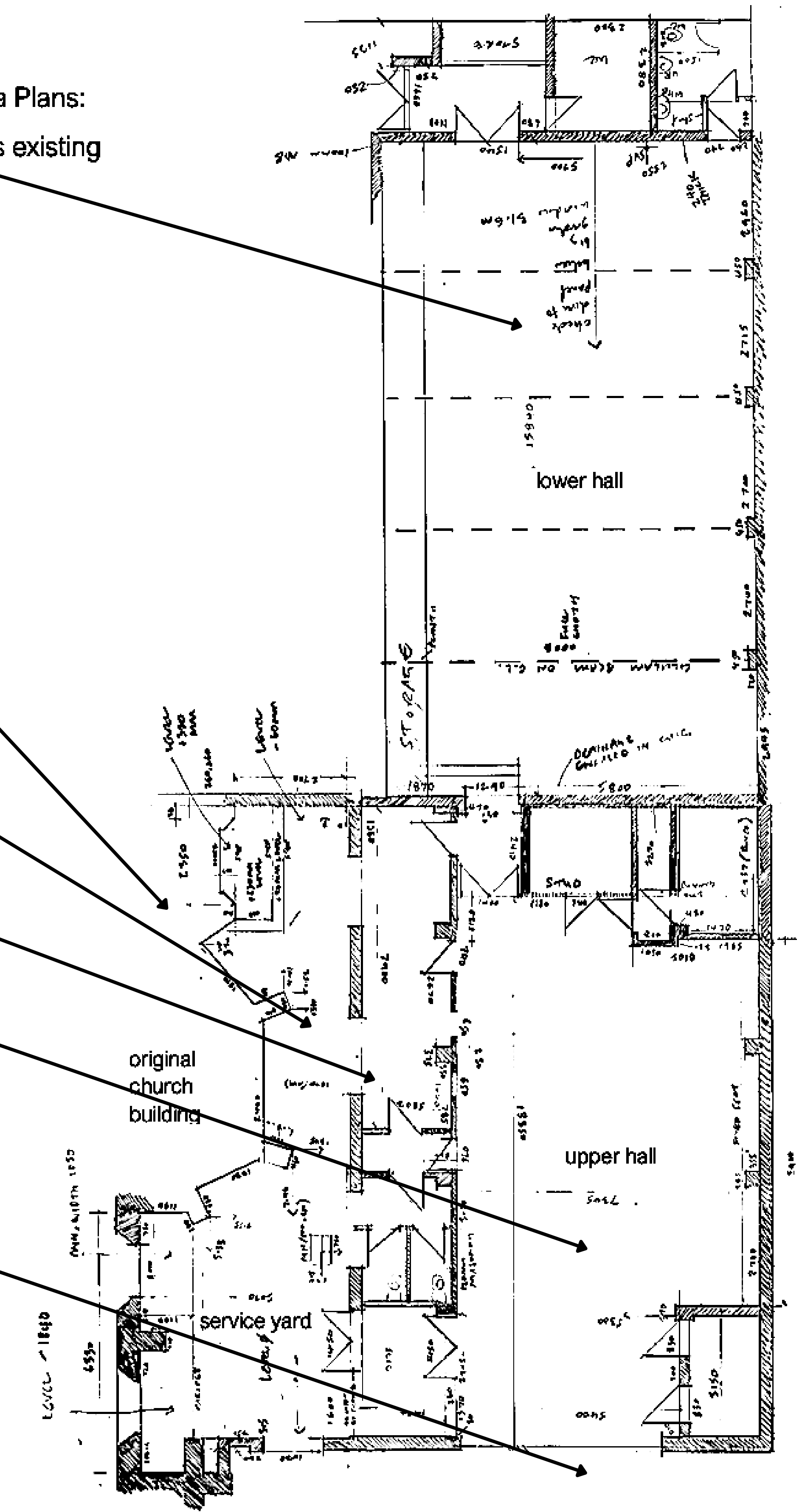


# Connecting the spaces

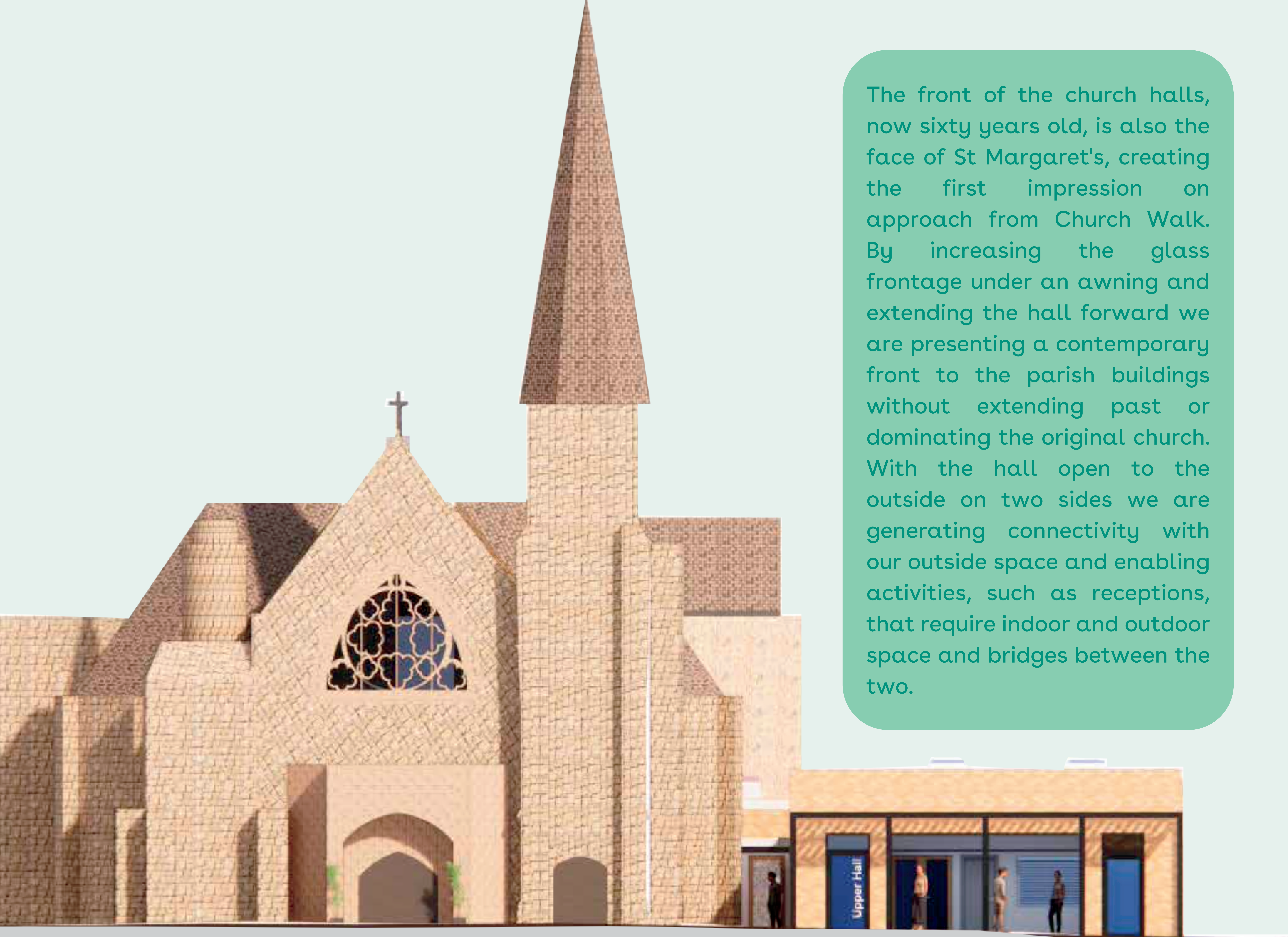
- Lower Hall only accessible through Upper Hall creating safeguarding issues and an inability to be used by two groups distinctly
- Church lacking separate indoor social space and inadequately provided with WCs.
- Service yard cramped with intimidating entrance gate
- Galley kitchen dated and narrow
- Upper hall showing its age, unattractively decorated with school-room feel
- Front showing 60s heritage, disconnected from garden

6a Plans:  
as existing



The current layout of buildings has no point of connection. Use by one group prevents access to other parts, while certain areas lack facilities. A new point of connection "the Parish Centre" is required that will facilitate access to all our assets.

- A new WC block accessible from all spaces
- An updated and enlarged kitchen can be used by both halls and church
- The Parish Centre creates a new space, providing support for users of the halls and church, and a new multi-purpose hospitality area. The Centre, crucially, creates a point of connection and independent access between the church, the upper hall, lower hall, kitchen and WCs.
- The Upper Hall opens to the outside space on two sides generating connectivity with the garden and church.
- A new open front to the hall creates light, a modern and appealing frontage to the church buildings, a separate entrance for the nursery, awning, opening out onto the garden.



The front of the church halls, now sixty years old, is also the face of St Margaret's, creating the first impression on approach from Church Walk. By increasing the glass frontage under an awning and extending the hall forward we are presenting a contemporary front to the parish buildings without extending past or dominating the original church. With the hall open to the outside on two sides we are generating connectivity with our outside space and enabling activities, such as receptions, that require indoor and outdoor space and bridges between the two.