

MFGA Aquanty Forecasting Tool

Quick Start Guide

This guide is an overview of how to sign up and access the main tools available within the MFGA Aquanty Forecasting tool. More detailed resources will also be made available to all users.

Please direct any questions or feedback to mfga@aquanty.com

This guide covers how to:

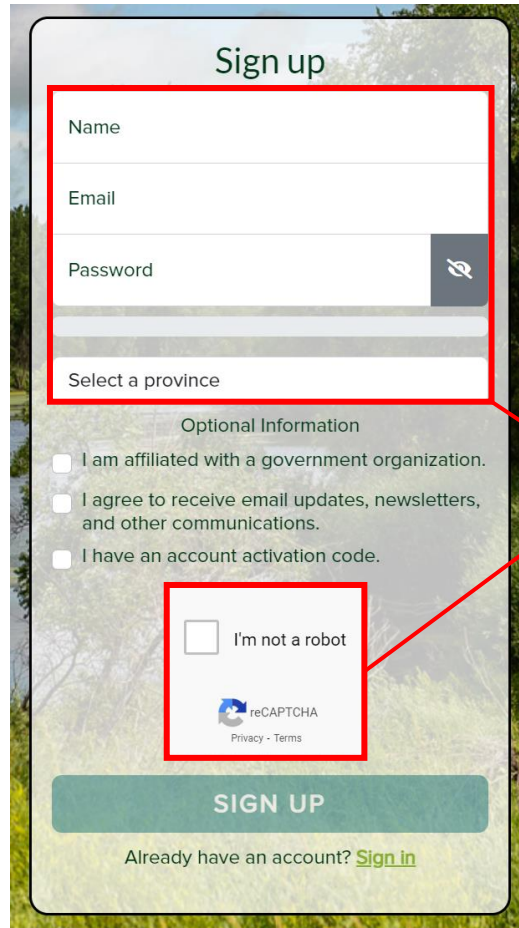
- Create an account 2
- Navigate the home page 3
- Check Forecast Feeds 4
- Access Remote Sensing Data 6

Create an account

Visit <https://waterforecast.mfga.net/signup> to create an account.

After entering your information, you will receive a confirmation email with a link to activate your account. Be sure to check all your email sub-folders and junk folder if this email does not arrive within a few minutes.

Please contact mfga@aquanty.com if you require any assistance during the account sign-up process.



The image shows a 'Sign up' form with the following fields and options:

- Name (required field)
- Email (required field)
- Password (required field, with a strength indicator icon)
- Select a province
- Optional Information:
 - I am affiliated with a government organization.
 - I agree to receive email updates, newsletters, and other communications.
 - I have an account activation code.
- I'm not a robot (reCAPTCHA)

A red box highlights the Name, Email, and Password fields. A red arrow points from the text 'Required Fields' to this box.

Required
Fields

Navigate the home page

On the left sidebar, navigate to one of two map views:

- 1) **Forecast Feeds:** to view hydrologic forecasts for a watershed
- 2) **Remote Sensing:** to view and download satellite imagery for a custom (user created) area of land

From this page you can also find your watershed and add it as a favourite through the “Add Favourite” option in the forecast feeds section of the page.

Any Areas of Interest you create in the Remote Sensing map view will be added to the home page.

Choose one of two main map views

Manitoba forage & grassland Association Water Forecast

DASHBOARD

Home

Forecast Feeds ^

Assiniboine

Remote Sensing

About App

Glossary

Feedback

Home

Available Forecast Feeds

Assiniboine

Add Favourite

Click on an AOI below to see more details.

Demo

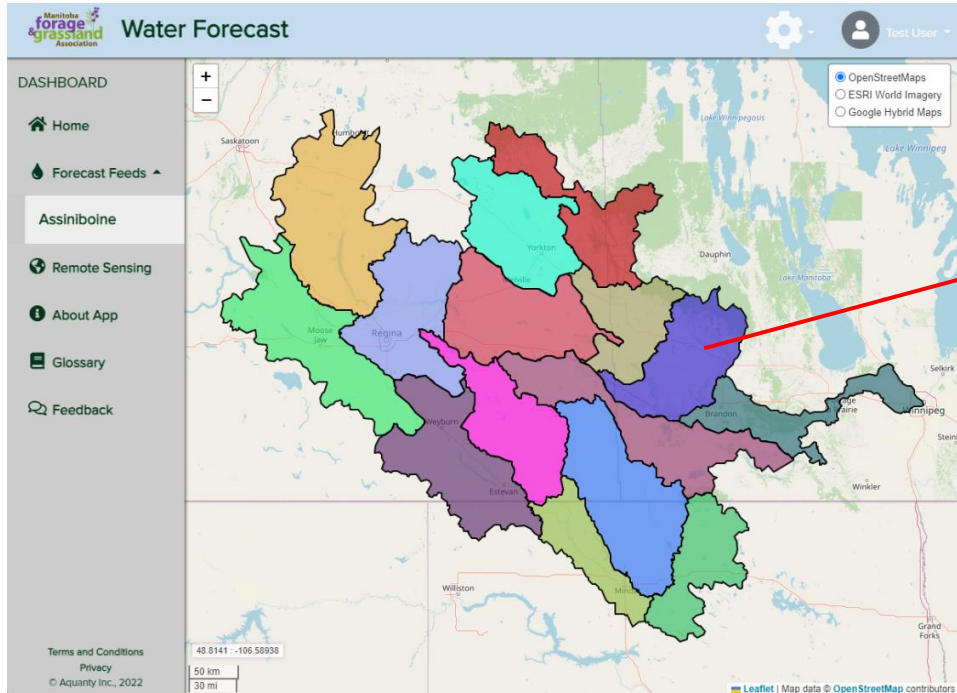
Terms and Conditions
Privacy
© Aquanty Inc., 2022

Pin a specific watershed to your homepage

Areas of interest you create show up here

Check Forecast Feeds

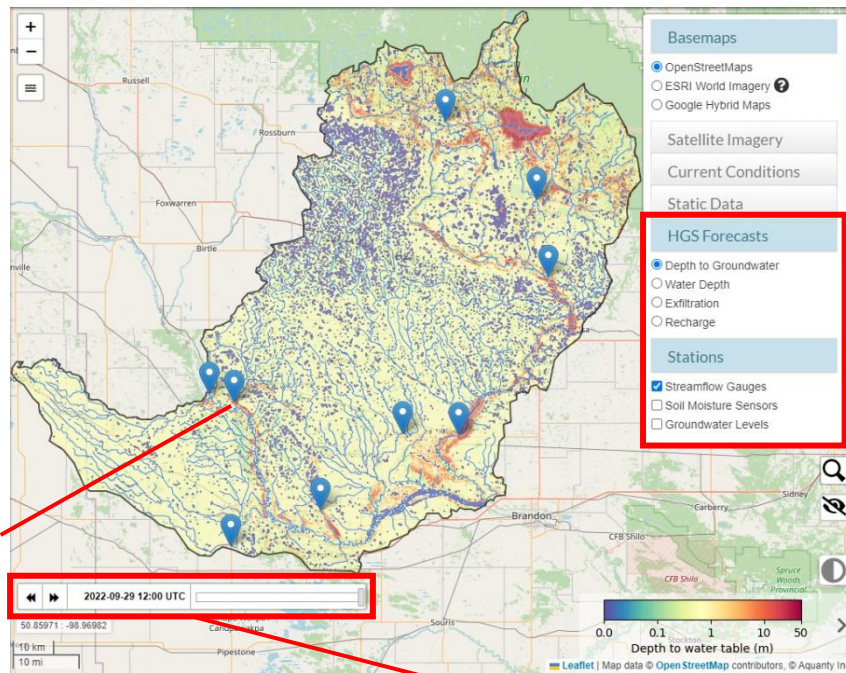
From the main Assiniboine Forecast Feed view, you can click on any watershed to see all available forecasts and data feeds.



Click on any watershed to see forecasts

Click any point on the map to view a forecast

Click on stations to view observations and forecasts



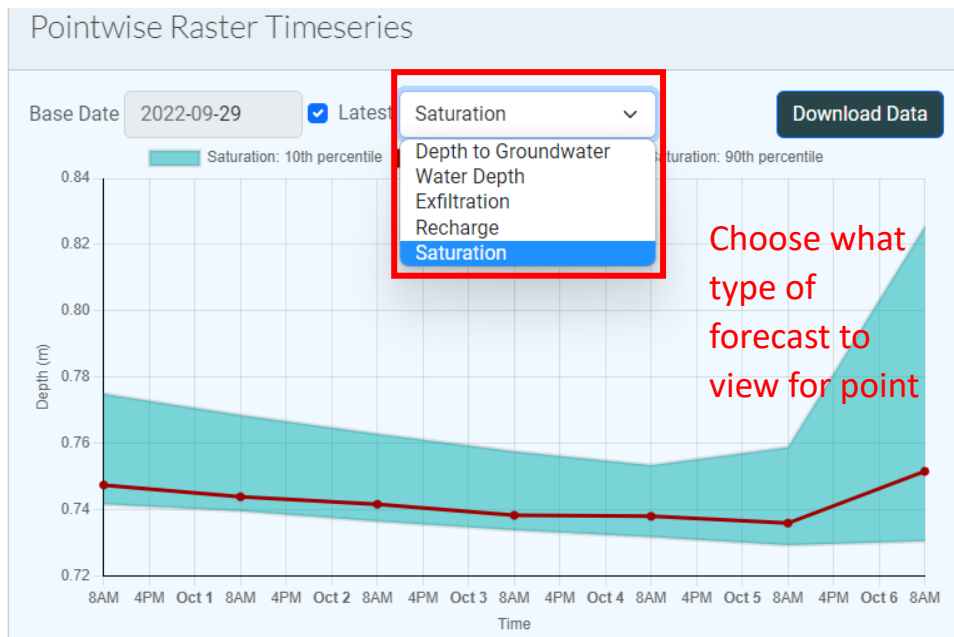
Toggle Forecast Maps and Stations from menu on the right

Time slider indicates the start date of the forecast

Once you are viewing the feed for a specific watershed you can turn map datasets and station locations on and off from the menu on the upper right.

To view a forecast for a specific location, click that location on the map. All locations on the map will show a forecast, not just station locations. Where the data is available, clicking on stations will show observations in addition to the forecast.

Forecast plots appear as a pop-up when you click on a point or a station.



Access Remote Sensing Data

The remote sensing map view allows you to view more detailed information about any areas you are interested in. Create your own custom area of interest using the editing tools on the left side of the map view. Click on your area of interest to explore satellite imagery, various calculators, precipitation plots, and agroclimate plots.

The screenshot shows a web-based map interface. On the left, a vertical toolbar contains icons for zooming, panning, and creating/editing areas of interest. A red box highlights these tools with the text "Tools to create and edit areas of interest". In the center, a map displays a satellite image with a color-coded overlay representing NDVI data for the period 2022/09/01 - 2022/09/30. A red box highlights a specific area on the map, with a red arrow pointing to a text box that says "Click on an area of interest in the map to access satellite imagery, calculators, and site-specific data plots." On the right side, a panel titled "AOIs" lists a "Demo Area of Interest" with a size of 163.98 ha. A red box highlights this panel with the text "Expandable menu to toggle map" and "Areas of interest you have created are listed here. Click to centre the map view on it." The bottom of the map shows a timeline for "2022-09-05 17:50 UTC" and a color scale for NDVI ranging from -0.4 to 0.8.