

# Merch<sup>®</sup>

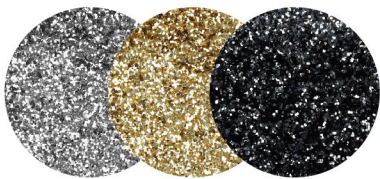
A SUSTAINABLE APPROACH TO UK PRINT AND PRODUCTION

<https://www.merchcmt.co.uk/eco-promise>

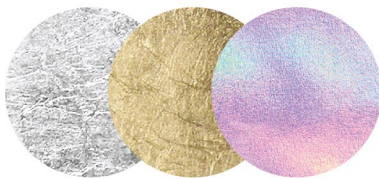


### PRINT TECHNIQUES:

GLITTER



FOIL



PUFF



FLOCK



EMBROIDERY



GLOW IN THE DARK

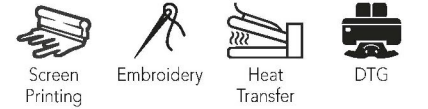
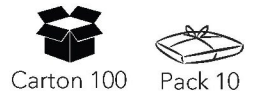


OR ANY COLOUR PIGMENT PRINT

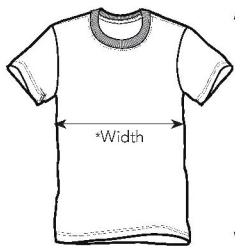


Best selling T-Shirt, made from quality, soft single-jersey in ringspun cotton with classic styling & a modern fit. Perfect for printing with consistently great results. This tee is ideal for retail, band merchandise and large events.

- Neutral Neck Label
- Ringspun Cotton T-Shirt
- European Size Specification
- Narrow Rib Knit Collar
- Taped Neck & Shoulders
- Double Needle Sleeves & Bottom Hem



 **MATERIAL** 100% Ringspun Cotton    
  **WEIGHT** 180 gm<sup>2</sup>    
  **SIZE** S-2XL    
  **ORIGIN** Bangladesh    
 **HS CODE** 6109100010    
  **COMPANION STYLES** Kids CR1500B



Sizes	S	M	L	XL	2XL
Chest To Fit (In)	34-36	38	40-42	44-46	48-50
Width (cm)*	46	51	56	61	66
Length (cm)†	68	71	73.5	76	78.5

Measurements Are Approximate. Manufacturer Tolerances Apply.

\*Half Chest Taken 2.5cm Below Underarm  
Taken From Highest Shoulder Point

Exceptions: White 170 gm<sup>2</sup> | Grey Heather 85% Cotton 15% Viscose



19-4007 TCX  
426C  
C | M | Y | K  
94 | 77 | 53 | 94



C12 TPX  
420C  
C | M | Y | K  
32 | 28 | 24 | 5



19-3921 TCX  
2380C  
C | M | Y | K  
100 | 65 | 0 | 60



19-1663 TCX  
7736C  
C | M | Y | K  
0 | 100 | 82 | 0



19-4050 TCX  
2111C  
C | M | Y | K  
91 | 64 | 0 | 0



11-0601 TCX  
663C  
C | M | Y | K  
0 | 0 | 0 | 0



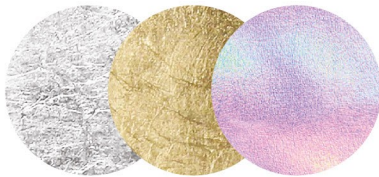


### PRINT TECHNIQUES:

GLITTER



FOIL



PUFF



FLOCK



EMBROIDERY



GLOW  
IN THE DARK



OR ANY COLOUR PIGMENT PRINT



# Merch.

**JT006**

AWDis Ladies Tri-Blend Cropped T-Shirt

Sizes: **XS - XL**

Material: **50% polyester/25% cotton/25% viscose.\***

Weight: **160 gsm**

## Features

- Ladies fit.
- Ribbed neckline.
- Taped neck.
- Cropped length.
- Twin needle sleeves and hem.
- Unbranded size label.

 Solid Black	 Heather Black	 Solid White	 Heather Grey
--	--	--	---

## Size conversions

	XS	S	M	L	XL
Size:	XS	S	M	L	XL
Ladies size:	8	10	12	14	16

## Product notices

Manufacturer code: **JT006**

Commodity Code: **61099020**

Country of origin: **Pakistan**

\*Heather black 40% cotton/40% viscose/20% polyester.

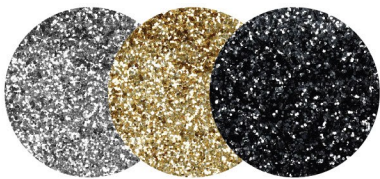
Colour representation is only as accurate as the web design process allows.



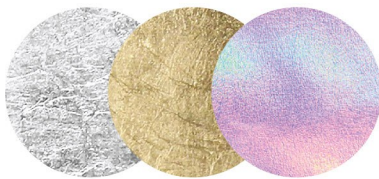


### PRINT TECHNIQUES:

GLITTER



FOIL



PUFF



FLOCK



EMBROIDERY



GLOW IN THE DARK



OR ANY COLOUR PIGMENT PRINT



# Merch.

**JH030**

AWDis Sweatshirt

Sizes: **XS - 5XL**

Material: **80% ringspun cotton/20% polyester.\***

Weight: **280 gsm**

## Features

- Soft cotton faced fabric.
- Ribbed collar, cuffs and hem.
- Brushed back fleece.
- Taped neck.
- Drop shoulder style.
- Twin needle stitching.
- Fashion fit.
- Tear out label.

 Deep Black	 Jet Black	 Black Smoke	 Arctic White	 Desert Sand	 Vanilla Milkshake	 Sky Blue	 Airforce Blue	 Hawaiian Blue	 New French Navy	 Oxford Navy	 Royal Blue
 Sapphire Blue	 Turquoise Surf	 Digital Lavender	 Lavender	 Plum	 Purple	 Dusty Green	 Peppermint	 Earthy Green	 Jade	 Bottle Green	 Forest Green
 Kelly Green	 Lime Green	 Olive Green	 Ash	 Moondust Grey	 Storm Grey	 Steel Grey	 Charcoal	 Heather Grey	 Nude	 Pumpkin Pie	 Caramel Latte
 Ginger Biscuit	 Hot Chocolate	 Fire Red	 Cranberry	 Red Hot Chilli	 Burgundy	 Baby Pink	 Dusty Pink	 Dusty Rose	 Candyfloss Pink	 Hot Pink	 Orange Crush
 Burnt Orange	 Sun Yellow	 Mustard	 Gold								

## Size conversions

	XS	S	M	L	XL	XXL	3XL	4XL	5XL
Size:	XS	S	M	L	XL	XXL	3XL	4XL	5XL
Chest (to fit):	34	36	40	44	48	52	56	60	62

## Product notices

Manufacturer code: **JH030**

Commodity Code: **61102091**

Country of origin: **Pakistan**

\*Black smoke 70% cotton/30% polyester.

\*\*Charcoal 52% cotton/48% polyester.

▲ Heather grey 75% cotton/25% polyester.

■ Hot pink, purple and sapphire blue available in 3XL.

\*Heather grey, jet black, deep black, new french navy, arctic white, baby pink, burgundy, charcoal, fire red and royal blue available in 3XL, 4XL and 5XL.

Colour representation is only as accurate as the web design process allows.



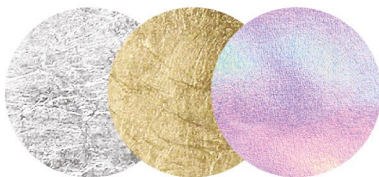


### PRINT TECHNIQUES:

GLITTER



FOIL



PUFF



FLOCK



EMBROIDERY



GLOW IN THE DARK



OR ANY COLOUR PIGMENT PRINT





# Merch.

**JH046**

AWDis Sophomore Zip Neck Sweatshirt

Sizes: **S - XXL**

Material: **80% ringspun cotton/20% polyester.\***

Weight: **280 gsm**

## Features

- Soft cotton faced fabric.
- Ribbed cuffs and hem.
- Brushed back fleece.
- Tear out label.
- Zip neck with metal YKK zip.



## Size conversions

	S	M	L	XL	XXL
Size:	S	M	L	XL	XXL
Chest (to fit):	36	40	44	48	52

## Product notices

Manufacturer code: **JH046**

Commodity Code: **61102091**

Country of origin: **Pakistan**

\*Charcoal 52% cotton/48% polyester.

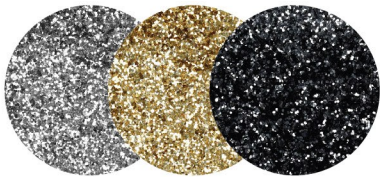
\*\*Heather grey 75% cotton/25% polyester.

Colour representation is only as accurate as the web design process allows.

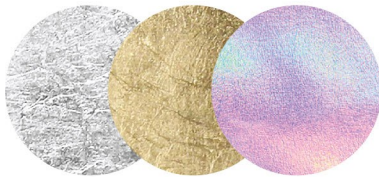


## PRINT TECHNIQUES:

GLITTER



FOIL



PUFF



FLOCK



EMBROIDERY



GLOW IN THE DARK



OR ANY COLOUR PIGMENT PRINT





# Merch®

**JH001**

AWDis College Hoodie

Sizes: **XS - 5XL**

Material: **80% ringspun cotton/20% polyester.\***

Weight: **280 gsm**

## Features

- Soft cotton faced fabric.
- Brushed back fleece.
- Drop shoulder style.
- Double fabric hood with self colour drawcord.
- Front pouch pocket.
- Ribbed cuffs and hem.
- Twin needle stitching.
- Tear out label.

Deep Black	Jet Black	Black Smoke	Arctic White	Desert Sand	Vanilla Milkshake	Cornflower Blue	Dusty Blue	Sky Blue	Airforce Blue	Hawaiian Blue	Tropical Blue
Deep Sea Blue	Denim	Ink Blue	Navy Smoke	New French Navy	Oxford Navy	Royal Blue	Sapphire Blue	Turquoise Surf	Digital Lavender	Dusty Purple	Lavender
Magenta Magic	True Violet	Plum	Purple	Ultra Violet	Wild Mulberry	Apple Green	Dusty Green	Peppermint	Alien Green	Spring Green	Earthy Green
Moss Green	Jade	Bottle Green	Forest Green	Kelly Green	Lime Green	Combat Green	Olive Green	Ash	Moondust Grey	Storm Grey	Shark Grey
Steel Grey	Charcoal	Heather Grey	Mocha	Nude	Caramel Toffee	Pumpkin Pie	Caramel Latte	Ginger Biscuit	Hot Chocolate	Fire Red	Brick Red
Cranberry	Red Hot Chili	Red Rust	Burgundy	Burgundy Smoke	Baby Pink	Dusty Pink	Dusty Rose	Candyfloss Pink	Pinky Purple	Lipstick Pink	Hot Pink
Peach Perfect	Orange Crush	Sunset Orange	Burnt Orange	Sherbet Lemon	Sun Yellow	Mustard	Gold				

## Size conversions

	XS	S	M	L	XL	XXL	3XL	4XL	5XL
Size:	XS	S	M	L	XL	XXL	3XL	4XL	5XL
Chest (to fit):	34	36	40	44	48	52	56	60	62

## Product notices

Manufacturer code: **JH001**

Commodity Code: **61102091**

Country of origin: **Pakistan**

\*Smoke colours 70% cotton/30% polyester.

\*\*Charcoal 52% cotton/48% polyester.

▲ Heather grey 75% cotton/25% polyester.

**KNITWEAR GAUGES:**

FINE KNIT - 30 GAUGE  
MEDIUM KNIT - 24 GAUGE  
HEAVY KNIT- 7 GAUGE

Gauge is the number of stitches per inch on a piece of knitwear  
In general, the fatter the yarn, the fatter the needle you should use with it, the bigger the stitches it will make and so you will need fewer of them.  
The thinner the yarn, the thinner the needle you should use with it, the smaller the stitches, so you need more of them.