



THIS PHOTO: Interior designer Heather Peterson designed the custom-built vanity with distinctive cane inset panels and topped it with durable quartz. Increasing the backsplash height to 6 inches and adding shapely edges and a footed finish define the piece. **OPPOSITE:** Repeating petal motifs jump from paper to flower to a honeycomb-inspired vase.

DRAWN FROM

NATURE



A Minnesota bath channels year-round beachy vibes with nature-inspired patterns, colors, and textures.

WRITER AND FIELD EDITOR *Kelly Ryan Kegans*
PHOTOS *Adam Albright*

SHE MIGHT NOT HEAR WAVES CRASH

outside her window, but when Nicole Duggan steps into the renovated master bath she shares with her husband, Rory, she gets carried away to a seaside sanctuary. That speaks volumes since Nicole's St. Paul home is more than 1,600 miles from the nearest ocean. "I'm a beach girl, but we don't live next to water," she says. "Still, I wanted to make the bathroom seem beachy without looking like it's out of place in Minnesota."

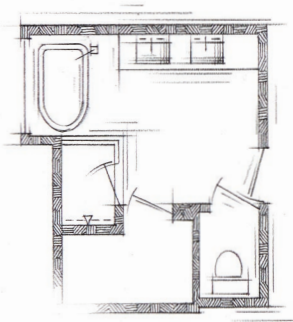
Outside her bathroom window there is a body of water—a private pond surrounded by leafy trees. Taking advantage of the natural surroundings, Nicole's sister-in-law, interior designer Heather Peterson, opened up the bath and installed nods to nature throughout the space. The scene-stealer is the striking apple green wallpaper inspired by chinoiserie panels illustrated with cherry blossoms and birds perched on branches. Brass, acrylic resin, crystal, and chrome hardware and accessories are the jewelry in the space. "I grew up in the country and love nature," Nicole says. "Since we spend a lot of time in winter here, I knew I wanted that pop of green."

Cane inset panels on the custom vanity's doors warm the white porcelain tile floor and further the resort-style vibe. For Rory, there are classic shapes. "My brother is more traditional," Peterson says. "So, for him, we have transitional plumbing fixtures, the bathtub's simple skirt, and other updated gestures like the glass shower surround."

Peterson also tempered the feminine features so the room felt more shared. On the wallpaper, for example, the gray-scale pattern adds edge to the green background. Leafy shapes on the



the plan



Bulky golden oak built-ins once defined this 1980s bathroom. Working within the same footprint, interior designer Heather Peterson carved out more open space with the freestanding soaking tub and custom-designed double vanity.



A secret garden takes shape in this renovated master bath where birds and botanical illustrations are reimagined on wallpaper inspired by an antique Chinese silk panel. The cast-iron soaking tub sits below a picture window overlooking a pond. "There's a really pretty birch outside the window and I love watching the birds come sit on the branches," homeowner Nicole Duggan says.



“**I’M ALWAYS LOOKING FOR WAYS TO BRING IN SOFT ELEMENTS TO BALANCE THE HARD EDGES IN A BATHROOM.**

—HEATHER PETERSON, INTERIOR DESIGNER

”

wall sconces and curvy mirrors are balanced with simple round cabinet pulls and mixed metal finishes. “The flourishes are small but impactful, and the balance feels timeless and easy to live with,” she says.

The classic look extends to the chevron tile floor feature, which Peterson created as a solution to the awkward 1980s floor plan the couple inherited when they bought the house five years ago. Although they gutted the former bath, the size of the room didn’t change. “Visually, we filled that open area in the middle with a tile ‘rug,’ and the statement wallpaper was another strategy to draw attention,” Peterson says. A freestanding soaking tub and the shapely new vanity replaced expanses of oak cabinetry and a built-in tub that once dominated the room.

Although none of the design choices are particularly trendy, Peterson says she and the couple purposely picked pieces with the most personality—wallpaper and lighting—as features that could more easily be refreshed in the future. “So often what makes the bathroom really special can be colorful tile or a colorful vanity, so we flipped the script on that,” Peterson says. “You could change nothing but the wallpaper and lighting in here and have a totally different space.”

Resources begin on page 100.



TOP LEFT: “I’m always looking for ways to bring in soft elements to balance the hard edges in a bathroom, so that’s why I brought in these linen lampshades,” Peterson says of the gold-leaf sconces flanking the mirrors. Leaflike petals along the lights’ bases play off the wallpaper’s botanical motif. **MIDDLE LEFT:** The white-beaded, flush-mount chandelier carries the beachy-glam look to the ceiling. **LEFT:** Classic chrome faucets—and other plumbing fixtures—mix with acrylic resin, crystal, and brass finishes on the hardware, mirrors, and lights. “Mixing metals is a great way to warm up a space and keep things from looking too trendy,” Peterson says. **OPPOSITE:** The glass shower enclosure provides open (yet private) views to the nature scene in the backyard. “My one must-have was a bigger shower,” homeowner Rory Duggan says. Built-in shower shelves provide ample space for bath products.



DESIGNER INSIGHTS: THE LONG GAME

As classic as the wallpaper is in Nicole and Rory Duggan's bathroom, Nicole knows 10 years down the road, she might be ready for a bathroom refresh. Interior designer Heather Peterson says the design decisions they made now will help avoid costly updates in the future.

- **Neutral necessities.** The white bathtub, vanity, flooring, and countertops are more expensive investments that support the statement-making colorful wallpaper and mixed metal finishes of the faucets and hardware.

- **Classic but not boring.** The bathroom is large enough that there needed to be some interest beyond the bold wallpaper. "We gave the backsplash a little shape, so there's some personality there even though we went with a plain white countertop," Peterson says. "The vanity's cane inset could also be changed out for an easy update down the road."

- **Walls that wow.** Eye-catching wallpaper—which covers two walls in the bathroom—can be replaced or even removed and the walls painted. "People think of wallpaper as a big investment, and it is, but it's not the same investment as tile, and it's not as difficult to change," Peterson says. "It's sort of counterintuitive: We made the biggest statement in here with the lowest-cost item."