

Thank you for choosing to ride the Banshee Rune. You have chosen one of the fastest and most capable enduro bikes on the planet, and we hope that it inspires confidence, and puts a big grin on your face.



This manual is designed to be a simple reference for you to help you look after your frame properly.

Torque specs

	Torque (Nm)
Lower Link Pivots	8
Top Link Pivots	5
Rear Thru Axle	8
Rear Thru Axle Lock Nut	3
Shock Bolt - Frame side (front)	10
Shock Bolt - Swing Arm (rear)	12
Derailleur Hanger Bolt	5

Maintenance schedule

We recommend following this maintenance schedule to ensure optimal performance.

Check bolts are tight	Before every ride
Clean and re-grease pivot assemblies	Every 50 hours of riding
Bearing replacement	Every 250 hours of riding

If riding in wet or very dusty conditions you should carry out maintenance more regularly as you see fit.

Bearing replacement instructions

Tools needed:

- Allen key set with two 5mm keys
- Torque wrench
- Grease
- Blue Loctite
- Bearing puller
- Bearing press
- Rubber mallet

For the **Rune**, a complete bearing replacement will require a total of:

4 x 608 2RS (for upper link pivots)

4 x 6001 2RS (for lower link pivots)

For best performance we only recommend using high quality bearings (SKF, FAG, INA)



1: Remove the shock from the frame using a single 6mm allen key at the rear and two 5mm allen keys at the front.



2: Stuff a rag under the bottom link to prevent damages to the frame.



3: Remove the pivot bolt hardware from the frame using appropriate allen keys.



4: Repeat the same process for all pivot axles.



5: Remove the pivot axles by sliding them out of the frame. If an axle is difficult to remove, use a punch or allen key that fits inside the hollow axle, and tap it out being careful not to damage axle threads.



6: Remove the bearing from the frame with a bearing puller.



7: Clean and inspect the frame once the bearings are removed.

Reinstallation:



8: Press the bearings into the frame using a bearing press.

⚠ **Caution:** Do NOT press the bearings into the frame without the links in place; doing so can damage the frame.

Clean and inspect all pivot axles prior to reassembly. If needed, order replacement axles through Banshee or your local dealer.

The links can fit very tightly in the frames at times, take time and be gentle when inserting them, and ensure that they are going in straight.



9: Lightly grease the pivot axles and reinsert them into the frame. Prepare the threads of all axle bolts with blue Loctite. Using two allen keys, tighten the pivot axle bolts. Use a torque wrench and confirm that it is torqued to no greater than marked on the pivot axle or bolt being tightened.



10: Apply blue Loctite to shock bolts and reinsert the rear shock.

Dropout kits installation instruction:

Tools needed:

- One 6mm allen key
- One 4mm allen key
- Torque wrench
- Blue Loctite



1: Install the derailleurs hanger onto the drive side dropout using a 4mm allen key. Tighten to 5Nm



2: Install the flip chips and the dropout bolts onto the rear triangle with the rear axle loosely in place to ensure good alignment initially. Torque to 12Nm.

For information on which flip chip settings to use refer to the FAQ section on the Banshee website

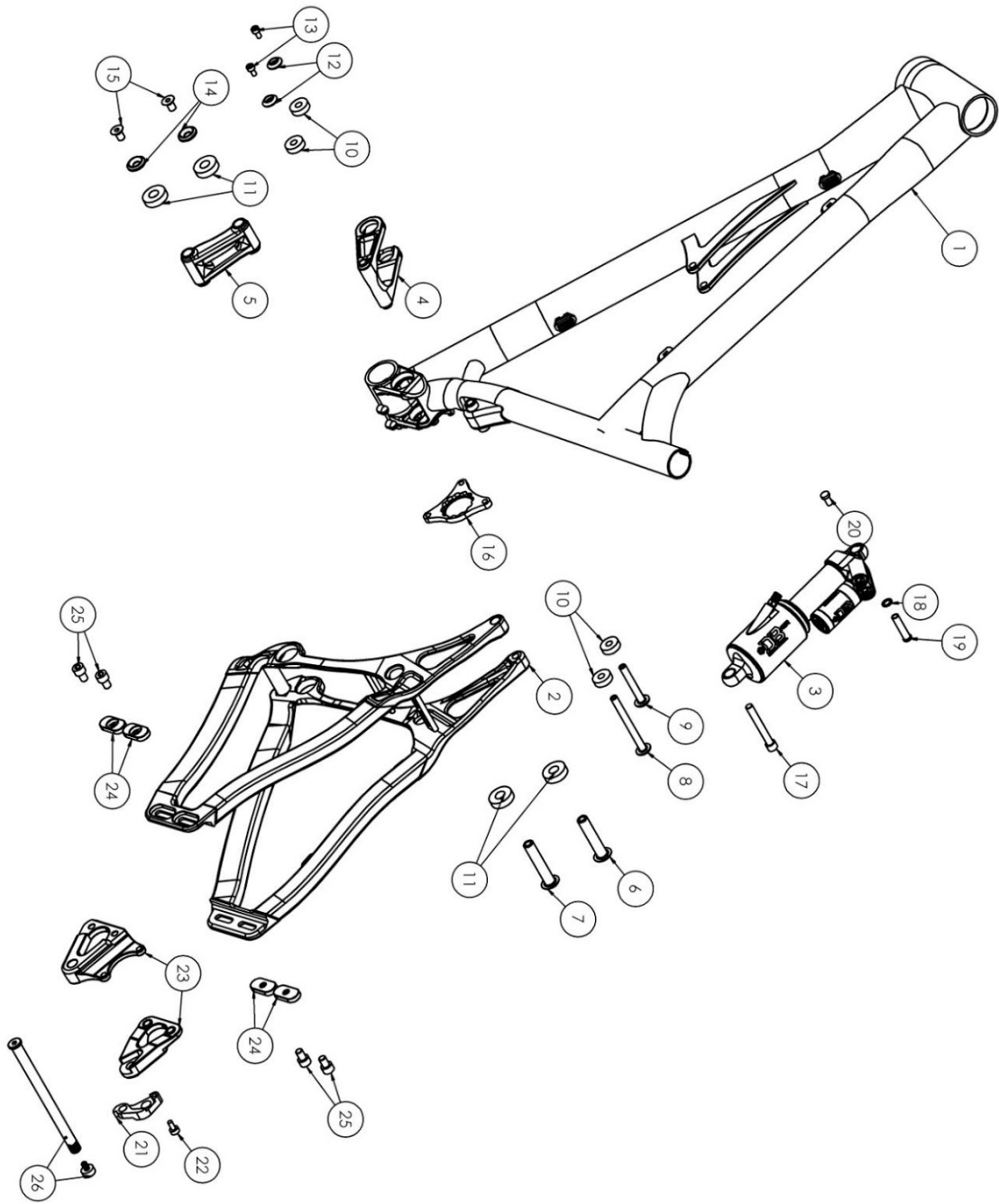


3: Apply grease to the rear axle and threads. Once wheel is installed, torque axle to 8Nm.



4: Apply a dab of blue loctite to axle lock bolt. Install the rear axle bolt, torque to a maximum of 3Nm. (this bolt is not structural, it is purely to prevent the axle from working loose) Be careful not to over-tighten this bolt otherwise it may be damaged.

Exploded view + parts list



Item No.	Part Number	Description	QTY
			.

1	011PCT16060	Front Triangle	1
2	012PCT14010	Rear Triangle	1
3	Shown	Cane Creek DB Air	1
4	540PCTPHA0-LKT-SK	Upper Link	1
5	540PCTPRI1-LKB-SK	Lower Link	1
6	6407522119760-HBL	Main Pivot Axle	1
7	64075221197645-HBL	Chainstay Pivot Axle	1
8	640751879786-HBL	Seat Stay Pivot Axle	1
9	640751879758-HBL	Seat Tube Pivot Axle	1
10	6306082RS-FAG	608-2RS Bearing	4
11	63060012RS-FAG	6001-2RS Bearing	4
12	6206185245-AB	Upper Link Compression Washer	2
13	600SI514ASCR	Upper Link Compression washer bolt	2
14	620622945-AB	Lower Link Compression Washer	2
15	600LI816SSN	Lower Link Compression Washer Bolt	2
16	0A1PCTDAR0-CGH-HB	ISCG Plate	1
17	600SI865ASCRN-1	Shock Bolt (Rear of shock)	1
18	620W8-2SS	Shock washer	1
19	600BI837ASCR	Front Shock Bolt Female	1
20	600BI612SSN	Front Shock Bolt Male	1
21	553PCTLEG1-RDH-AN	Derailleur Hanger	1
22	600SI512SSN-1	Derailleur Hanger Bolt	1
23	Shown	Swappable Dropout	2
24	Shown	Flip Chip	4
25	Shown	Flip Chip Bolt	4
26	Shown	KS Axle	c

Available Dropout Configurations:	
142x12m m	26"/27.5" Wheel
150x12m m	26"/27.5" Wheel

Rebuild kits

Kit Name	Kit part number	Qty	Part number	Exploded view ref	Description
----------	-----------------	-----	-------------	-------------------	-------------

Bearing kit	SP-KSBRG	4	63060012RS-FAG	11	Bearing 6001 2RS (lower link)
		4	6306082RS-FAG	10	Bearing 608 2RS (upper link)

Axle kit	SP-KSPVT	2	600LI816SS N	15	Lower Link Compression Washer Bolt
		2	620622945-AB	14	Lower link Compression Washer
		2	600SI514AS CR	13	Upper Link Compression washer bolt
		2	6206185245-AB	12	Upper Link Compression Washer
		1	64075187975 8-HBL	9	Rocker Pivot Axle (front of upper link)
		1	64075187978 6-HBL	8	SS Pivot Axle (rear of upper link)
		1	64075221197 60-HBL	6	Main pivot axle (front of lower link)
		1	64075221197 645-HBL	7	CS Pivot Axle (rear of lower link)

ShockBolt kit	SP-KSBLT	1	600BI612SS N	20	Shock bolt male (front)
		1	600BI837AS CR	19	Shock Bolt female (front)
		1	600SI865AS CRN-1	17	Shock Bolt (rear)
		1	620W8-2SS	18	Shock Bolt Washer

Dropout kit 135x10m m 26"	DF- KS135	1	554PCTPRI1 -DRLO-1-AB		135DS dropout with threaded inserts
		1	554PCTPRI1 -DRRO-1-AB		135NDS dropout with threaded inserts
		2	550A1777M7 075-SL	(same as paradox)	Derailleur Hanger (/bolt)
		4	600SI812SS N		M8x12 dropout bolt (attach dropout to frame)
		4	550PCTPRI0 -DRFB-1-AB		Chip - neutral
		4	550PCTPRI0 -DRFB-2-AB		Chip - High / Low

Dropout kit 142x12m m 650-b	DF- KS650	1	554PCTPRI1 -DRRO-1-AB		142DS dropout with threaded inserts
		1	554PCTPRI1 -DRLO-1-AB		142NDS dropout with threaded inserts
		1			142x12mm axle
		1			rear axle bolt
		2	550A1777M7 075-SL		Derailleur Hanger /bolt
		4	600SI812SS N		M8x12 dropout bolt (attach dropout to frame)
		4	550PCTPRI0 -DRFB-1-AB		Chip - neutral
		4	550PCTPRI0 -DRFB-2-AB		Chip - High / Low

Dropout kit 142x12m m	DF- KS142				
		1	554PCTPRI1 -DRRO-1-AB		142DS dropout with threaded inserts
		1	554PCTPRI1 -DRLO-1-AB		142NDS dropout with threaded inserts
		1			142x12mm axle

		1			rear axle bolt
		2	550A1777M7 075-SL		Derailleur Hanger /bolt
		4	600SI812SS N		M8x12 dropout bolt (attach dropout to frame)
		4	550PCTPRI0 -DRFB-1-AB		Chip - neutral
		4	550PCTPRI0 -DRFB-2-AB		Chip - High / Low

Dropout kit 150x12m m 650-b	DF- KS650- 150				
		1	554PCTPRI1 -DRRO-1-AB		150DS dropout with threaded inserts
		1	554PCTPRI1 -DRLO-1-AB		150NDS dropout with threaded inserts
		1			150x12mm axle
		1			rear axle bolt
		1	550A1777M7 075-SL		Derailleur Hanger /bolt
		4	600SI812SS N		M8x12 dropout bolt
		4	550PCTPRI0 -DRFB-1-AB		Chip - neutral
		4	550PCTPRI0 -DRFB-2-AB		Chip - High / Low

Dropout kit 150x12m m	DF- KS150				
		1	554PCTPRI1 -DRRO-1-AB		150DS dropout with threaded inserts
		1	554PCTPRI1 -DRLO-1-AB		150NDS dropout with threaded inserts
		1			150x12mm axle
		1			rear axle bolt
		2	550A1777M7 075-SL		Derailleur Hanger /bolt
		4	600SI812SS		M8x12 dropout bolt

			N		
		4	550PCTPRI0-DRFB-1-AB		Chip - neutral
		4	550PCTPRI0-DRFB-2-AB		Chip - High / Low

142mm Hanger Kit	DF-HNG142				
		2	553PCTLEG1-RDH-AN		Derailleur Hanger
		1	600SI512SS N-1		Derailleur Hanger Bolt

135mm Hanger Kit	DF-VHNG	2	550A1777M7 075-SL		Derailleur Hanger (/bolt)
-------------------------	---------	---	-------------------	--	---------------------------

150mm axle kit	SP-AX150				
Axle			no part number listed		150x12mm axle
nut			no part number listed		rear axle bolt

142mm axle kit	SP-AX142				
Axle			no part number listed		142x12mm axle
nut			no part number listed		rear axle bolt

Headset 44/56mm	DP-HST56				Banshee Munro Taper Headset 44/56 (For Spitfire, Rune, Prime, Darkside MY16Legend)
------------------------	----------	--	--	--	--

ISCG Plate	SP- ISCG	1	0A1PCTDAR 0-CGH-HB		ISCG Plate
-----------------------	-------------	---	-----------------------	--	------------

Warranty

For the warranty related questions and the most up to date warranty information please go to the Banshee website, or contact Banshee directly.