

HILS-LSW SERIES

Horizontal Display Lighting

General description:

The HILS-LSW is a complete series of wall or canopy fixed display and/or wall wash lighting. Designed with high technical characteristics for merchandise illumination for both refrigeration and shelf display applications. The HILS-LSW is the most versatile display lighting solution on the market and is available in standard lengths of 1', 2', 3', 4', 5', 6' with optional dimming controls.

Performance:

- UL cUL
- IP65
- 24V DC External Driver
- 5W - 26W - Watts
- 285Lm - 2680Lm - Lumens
- 1ft - 6ft - Lengths
- Slim and compact size
- Optional dimming with PWM driver
- 5 Year Warranty

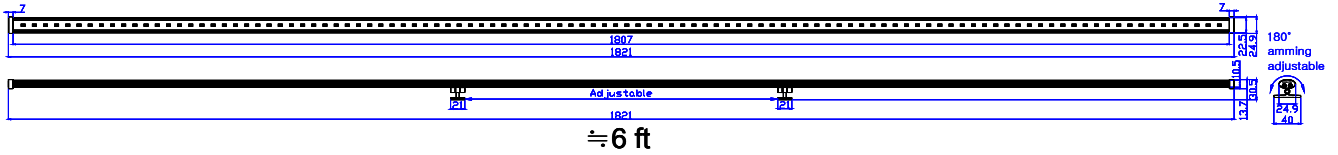


Ordering Information:

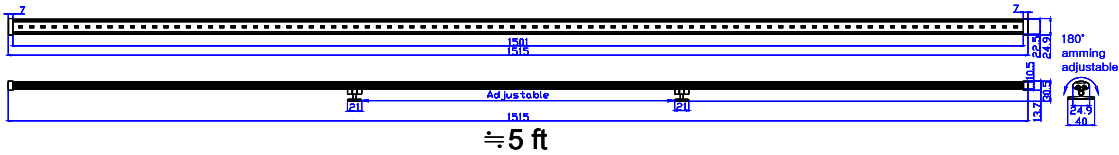
EXAMPLE PART #: HILS-LSW048T-4K

SERIES	LENGTH	VERSION	-	CCT
HILS-LSW	018 (1ft)	T	-	2K (2150K)
	036 (2ft)			3K (3000K)
	054 (3ft)			4K (4000K)
	072 (4ft)			5K (5000K)
	090 (5ft)			
	108 (6ft)			

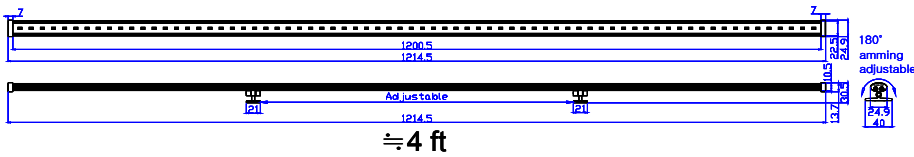
Dimensions:



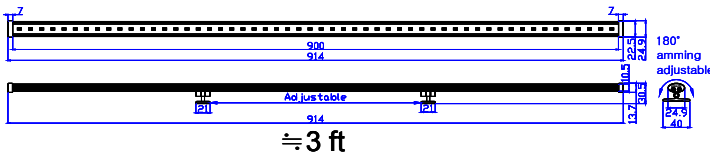
≅ 6 ft



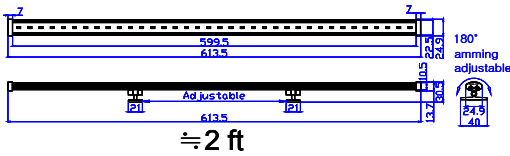
≅ 5 ft



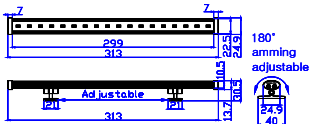
≅ 4 ft



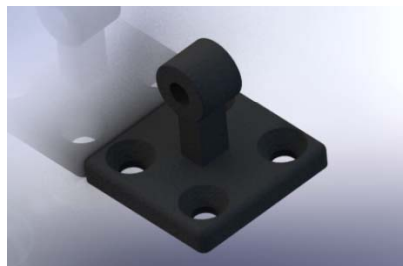
≅ 3 ft



≅ 2 ft



Mounting Details:



Measurement & Tolerance

Parameter	Symbol	Ratings						Unit
		1 ft	2 ft	3 ft	4 ft	5 ft	6 ft	
Input Power	P _I	24						DCV
Wattage	P _D	4.32	8.64	12.96	17.28	21.6	25.92	W
*1 Dimensions	L × W × H	1' - 6' × 1" × 1.2"						Ft/In
Weight	W	100	195	287	380	475	570	g
Operating Temperature	T _{opr.}	-20 ~ +55						°C
Storage Temperature	T _{stg.}	-25 ~ +70						°C

*1 Please refer to Dimensions.

Electric-Optical Characteristics

ITEM	Rating	Sampling R & T	Measurement method		
Power Dissipation	Max. 28.5W	5ea/Lot	According to DIGILITE Test Spec. HIOT-LFE Item -1-		
White color C.I.E Characteristics	3°K - 5°K <small>x=0.3736,y=0.3874 / x=0.3670,y=0.3578 x=0.3898,y=0.3716 / x=0.4006,y=0.4044</small>	5ea/Lot	According to DIGILITE Test Spec. HIOT-LFO Item -2-		
	2150°K <small>x=0.4707,y=0.3807 / x=0.4807,y=0.3607 x=0.5107,y=0.3907 / x=0.5007,y=0.4107</small>				
Luminous Flux	3000°K	5ea/Lot	According to DIGILITE Test Spec. HIOT-LFO Item -3-		
				1ft 445 Lumen	
				2ft 895 Lumen	
				4000°K	
				3ft 1,340 Lumen	
				4ft 1,785 Lumen	
	5000°K			5ft 2,235 Lumen	
				6ft 2,680 Lumen	
				2150°K	1ft 285 Lumen
					2ft 575 Lumen
					3ft 860 Lumen
					4ft 1,145 Lumen
5ft 1,435 Lumen					
6ft 1,720 Lumen					
Angle Sensitivity at 50%	±60°	5ea/Lot	According to DIGILITE Test Spec. HIOT-LFO Item -4-		

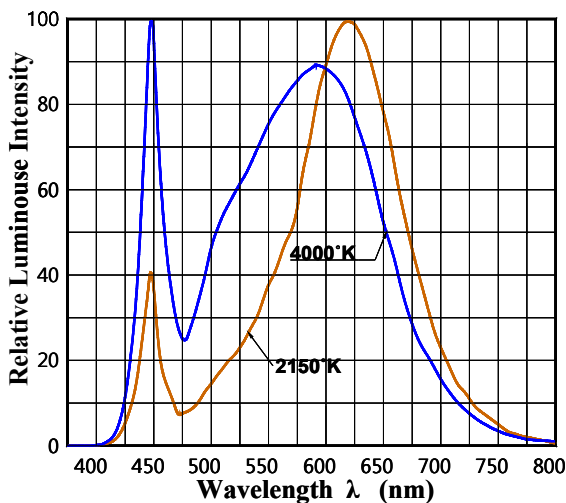
Optics:

Parameter	Symbol	Ratings						Unit
		1 ft	2 ft	3 ft	4 ft	5 ft	6 ft	
* ² Color Temperature	Ct	4,000						°K
Luminous Flux		445	895	1,340	1,785	2,235	2,680	Lumen
* ² Color Temperature	Iv	2,150						Lumen
Luminous Flux		285	575	860	1,145	1,435	1,720	
Angle Sensitivity at 50%	20½	±60°						Deg.
Interface	-	DC, PWM Signal						

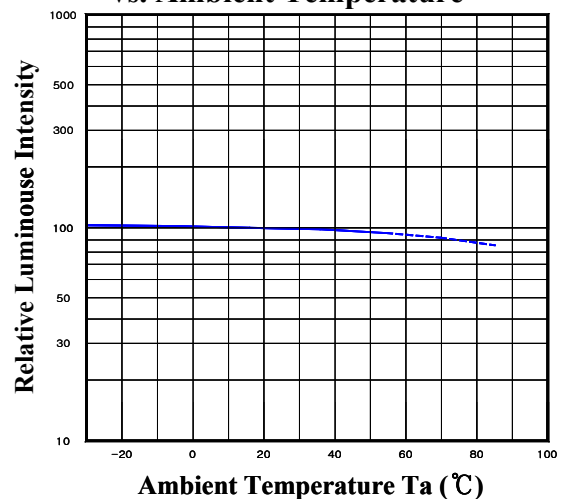
*² Please refer to Color C.I.E Characteristics.

Photometrics:

■ Wavelength Characteristics



■ Relative Luminous Intensity vs. Ambient Temperature



■ Directive Characteristics

