



# RESONANT VOICES

Sameness, Difference and Mutuality  
in the Consulting Room, Clinic and Community

**APRIL 3-6, 2019**

Loews Philadelphia Hotel • Philadelphia, PA

# 2019 BOARD OF DIRECTORS

## President

V. Barry Dauphin, PhD, ABPP

## Past President

Dennis Debiak, PsyD

## Secretary

Lara Sheehi, PsyD

## Treasurer

Jill Bellinson, PhD

## APA Council Representatives

Mary Beth Cresci, PhD, ABPP    Arlene "Lu" Steinberg, PsyD  
 Steven Reisner, PhD    Bryant Welch, JD, PhD  
 Stephen Soldz, PhD

## Members-at-Large

Dana Charatan, PsyD    Scott Pytluk, PhD, ABPP  
 David L. Downing, PsyD, ABPP    Shara Sand, PsyD  
 Matthew LeRoy, PsyD    Usha Tummala-Narra, PhD  
 Johanna Malone, PhD    Kirkland Vaughans, PhD  
 JoAnn Ponder, PhD

## Section Representatives

Section I: Albert J. Brok, PhD  
 Section II: Virginia Shiller, PhD  
 Section III: Marilyn Metzl, PhD, ABPP  
 Section IV: Joseph Schaller, PsyD  
 Section V: Ghislaine Boulanger PhD  
 Section VIII: Antonia Halton, PhD  
 Section IX: Alice Shaw, PhD

## Parliamentarian

Joseph Schaller, PsyD



# TABLE OF CONTENTS

<b>Division 39 Board of Directors .....</b>	<b>Inside Cover</b>
<b>Conference Organizers.....</b>	<b>2</b>
<b>Welcome Message.....</b>	<b>3</b>
<b>General Conference Information.....</b>	<b>4</b>
<b>Division 39 Sections &amp; Committees .....</b>	<b>5</b>
<b>Continuing Education Information .....</b>	<b>6</b>
<b>Special Events .....</b>	<b>7</b>
<b>Keynotes .....</b>	<b>10</b>
<b>The Marsha D. McCary Fund for Psychoanalysis.....</b>	<b>13</b>
<b>Award Recipients.....</b>	<b>21</b>
<b>Poster Presentations.....</b>	<b>23</b>
<b>Conference Program Day by Day.....</b>	<b>13</b>
<b>Wednesday.....</b>	<b>13</b>
<b>Thursday.....</b>	<b>14</b>
<b>Friday .....</b>	<b>28</b>
<b>Saturday.....</b>	<b>39</b>
<b>List of Presenters.....</b>	<b>49</b>
<b>Hotel Maps.....</b>	<b>57</b>

# CONFERENCE ORGANIZERS

## CONFERENCE CO-CHAIRS

Joseph Schaller, PsyD  
Matthew Whitehead, PsyD

## STEERING COMMITTEE

Sara Bressi, PhD, LSW  
Leilani Salvo Crane, PsyD, MBA  
Rachel Kabasakalian McKay, PhD  
Jill Ragozzino McElligott, MSS, LCSW  
Ari Pizer, PsyD, MMT  
Luis Ramirez, LCSW  
Courtney Slater, PhD  
Sarah White, PsyD

## CONFERENCE COORDINATORS

Natalie Shear Associates, LLC

## PROPOSAL REVIEWERS

Cindy Baum-Baicker, PhD	Lisa Lyons, PhD
Joan Berzoff, MSW, EdD	William MacGillivray, PhD, ABPP
Christopher Bonovitz, PsyD	Cheri Marmarosh, PhD
Monique Bowen, PhD	Madeline Maxson, PhD
Mary Kim Brewster, PhD	Jill McElligott, MSS, LCSW
Albert Brok, PhD	Rachel Kabasakalian McKay, PhD
Chaim Bromberg, PhD	Kevin Meehan, PhD
Noelle Burton, PsyD	Jay Moses, PhD
Batsirai Bvunzawabaya, PhD	Sanjay Nath, PhD
David Byers, MSW, PhD	Duangporn O'Toole, MS, MS
Carter Carter, LICSW	Ari Pizer, PsyD, MMT
Dana Charatan, PsyD	JoAnn Ponder, PhD
Marilyn Charles, PhD, ABPP	Tracy Prout, PhD
Leilani Salvo Crane, PsyD, MBA	Scott Pytluk, PhD, ABPP
Dennis Debiak, PsyD	David Ramirez, PhD, ABPP
Karen Dias, PsyD	Larry Rosenberg, PhD
Colin Ennis, PsyD	M. Sasha Rudenstine, PhD
Rebecca Ergas, PhD	Shara Sand, PsyD
Katie Gentile, PhD	Kyle Schultz, PsyD
Barbara Goldsmith, PsyD	Lara Sheehi, PsyD
William Gottdiener, PhD	Courtney Slater, PhD
Anton Hart, PhD	Arlene "Lu" Steinberg, PsyD
Toni Hellman, LCSW	Melanie Suchet, PhD
Heejin Kim, PhD	Sarah White, PsyD
Matthew LeRoy, PsyD	Jane Widseth, PhD
Holly Levenkron, LICSW	

# Welcome!

Philadelphia is a city rich with culture and contradictions. The “City of Brotherly Love” has had more than its share of division and violence related to racial and other social differences. It is a city which saw some of the most significant early movements in the effort to establish fairness and equality for the LGBTQ community. It is an old city with a very new and lively metropolitan scene. In the midst of it all, the vibrancy of music, art and other cultural forms helps give voice and visibility to the many citizens and cultures who make Philadelphia their home. Much of this is depicted in representations from Philadelphia’s Mural Arts Project which has been used in our print and online material.

Our conference theme: *Resonant Voices: Sameness, Difference and Mutuality in the Consulting Room, Clinic and Community* seeks to engage our imagination in the ways in which psychoanalysis as an art and a science has been evolving to help us understand what makes our experiences both unique and common in being “more human than not.” But we are also striving toward a more inclusive experience of psychoanalytic theory and practice. Throughout these three days, we will have the opportunity to hear about many different ways in which individuals practice in a variety of settings and situations. We are seeking to become even more aware of the cultural and social forces which shape our lives and the lives of others, and to hear the voices of those who have often felt unheard. We have the opportunity to listen to one another’s stories, theoretical perspectives and ways of engaging in our work with diverse populations. We have also made an effort to include opportunities to reflect on the experience of children, who have often been only minimally represented at our gatherings.

This year marks an important transition in what we have known as *Division 39*, which is now known as *The Society for Psychoanalysis and Psychoanalytic Psychology*, (*Division 39 of the American Psychological Association*). This change reflects the recognition that the Division has long been home to many with diverse training and interest in psychoanalytic and psychodynamic theory and practice.

On behalf of the 2019 Steering Committee, we want to extend a special welcome to those who may be joining us for the first time, as well as all graduate students who are the future of our field. We also welcome those who have been coming for many years and have formed the foundation of this Society, and who continue as analysts, therapists, researchers, teachers and mentors. Welcome to all!

Joseph Schaller, PsyD  
CO-CHAIR

Matthew Whitehead, PsyD  
CO-CHAIR

# GENERAL INFORMATION

## On-Site Registration and Check-In

Registration at the Hotel opens **Wednesday, April 3 at 11:00am** so that those attending the pre-conference continuing education sessions can register and pick up their credentials and materials. All attendees may also take advantage of this early opportunity.

## Daily Registration Hours

**LOCATION:** Parlor P-2, 3rd Floor

**Wednesday, April 3** ————— 11:00am–5:30pm

**LOCATION:** Millennium Foyer, 2nd Floor

**Thursday, April 4** ————— 7:30am–5:00pm

**Friday, April 5** ————— 7:30am–6:00pm

**Saturday, April 6** ————— 7:30am–5:00pm

## Book Exhibitor Location and Hours

Exhibitors will be located in the **Millennium Foyer on the second floor**. Exhibitors include Association Book Exhibit, Routledge, Taylor and Francis and several others.



**Wednesday, April 3**

Move-in

**Thursday, April 4 – Saturday, April 6**

9:00am–5:00pm

**Note:** Hours may change depending on the conference program. Notices will be posted online and onsite indicating new times when necessary.

## Gender Neutral Restroom

The Loews Philadelphia Hotel has a gender neutral restroom which will be clearly marked for those wishing to use it.

Full Program details online! [www.division39springmeeting.com](http://www.division39springmeeting.com)

# DIVISION 39

## DIVISION 39 SECTIONS

- I – Psychological Psychoanalysis Practitioners
- II – Childhood and Adolescence
- III – Women, Gender, and Psychoanalysis
- IV – Local Chapters
- V – Applied Clinical Psychoanalysis
- VIII – Couple and Family Therapy and Psychoanalysis
- IX – Social Responsibility

## DIVISION 39 COMMITTEES

American Board and Academy of Psychoanalysis  
(ABAPsa)

Awards Committee

Candidate Outreach Committee

Committee on Education and Training

Committee on International Relations  
in Psychoanalytic Psychology

Committee on Multicultural Concerns

Committee on Psychoanalysis and Healthcare

Committee on Sexualities and Gender Identities

Early Career Professionals Committee

Ethics Committee

Graduate Student Committee

Membership Committee

Program Committee

Psychoanalytic Psychology Editorial Board

Publications Committee

Research Committee

# CONTINUING EDUCATION

The Society for Psychoanalysis and Psychoanalytic Psychology (Division 39) is approved by the American Psychological Association (APA) to sponsor continuing education (CE) for psychologists. The Society maintains responsibility for these programs and their content. Wednesday Master Classes and Spring Meeting programs are open to all mental health professionals; participants may receive CE credit for attending these programs. Participants from professions other than psychology should consult with their respective licensing boards regarding the acceptance of APA-approved Certificates of Attendance as documentation of CE. For programs sixty minutes in duration or longer, one credit is awarded for each hour of CE activity, with additional quarter-increments of CE credit awarded beyond one hour; for example, attending a one-hour-and-forty-five-minute program will yield 1.75 CE credits.

Wednesday Master Classes require registration separate from general registration for the Spring Meeting and are offered for additional fees. At the conclusion of Master Classes, participants will receive a *paper* certificate of attendance upon completing a *paper* evaluation form [on site](#).

Each CE-eligible Spring Meeting program is identified by a letter/number code (e.g. TH-1, FR-3, SA-5, SU-2) indicating the day of the presentation and its order in that day's schedule. For all CE-eligible programs, there is no partial credit for attending only a portion of an eligible program. Attendance of CE-eligible Spring Meeting programs will be confirmed using a scanning system. Participants will be required to have the barcode on their badges scanned both at the start of the program session and as they leave at the conclusion of the session. To receive a Certificate of Attendance for any CE-eligible program, it is necessary to (1) register for the Spring Meeting, (2) attend the entire presentation, and (3) submit a completed evaluation form through Express Evaluations, the Society's online evaluation and certificate service. Please note our transition away from paper evaluations to online evaluations! Instructions for using Express Evaluations will be available at the Registration Desk and included in each attendee's packet of materials received during registration.

The Society for Psychoanalysis and Psychoanalytic Psychology (Division 39) is committed to accessibility and non-discrimination and conducts CE activities in conformity with the APA Ethical Principles for Psychologists. There is no commercial support for any of the Wednesday Master Classes or Spring Meeting CE programs; all presenters have denied the existence of any relationships (e.g. research projects, grants or other funding/support) that could be construed as conflicts of interest. Presenters of CE-eligible programs will address, whether during the program or via a list of references, the utility of the presentation content and the basis for these statements as well as the limitations and risks associated with the program content. Presenters and participants are asked to honor the need for privacy and confidentiality throughout these programs. If program content becomes emotionally distressing, participants are encouraged to process these feelings during discussion periods. If participants have special needs, we will make reasonable attempts to accommodate them.

Please contact Natalie Lewis at [natalielewis@natalieshear.com](mailto:natalielewis@natalieshear.com) with requests for accommodation. Please contact Soffia Palsdottir (Chair of the Division 39 Continuing Education Committee) at [div39ce@gmail.com](mailto:div39ce@gmail.com) for additional information about presentations, questions or complaints.

Wednesday, April 3, 2019

SPECIAL  
EVENTS

## Barnes Foundation

5:30pm–7:00pm • Cost per person: \$50

Limited to 48 people

Come early to Philadelphia and take advantage of some of its artistic treasures! Tour the Barnes Foundation after-hours and enjoy a one-and-a-half hour tour with a docent. The Barnes has the world's greatest collection of impressionist, post-impressionist and early modern paintings. Groups will be limited to eight persons. [www.barnesfoundation.org](http://www.barnesfoundation.org)



## Philadelphia Mural Arts Walking Tours

10:00am or 2:00pm • Cost per person: \$22

Limited to 20 people per 2 hour tour

Experience firsthand how art ignites change: explore the world's largest outdoor art gallery and get to know Philadelphia's stunning mural collection on an exciting guided tour. Weave through diverse neighborhoods on foot, and get inspired by the incredible public art that makes the city the mural capital of the world. Murals represent a variety of themes, artistic processes, and public art at its finest. [www.muralarts.org](http://www.muralarts.org)



## NEW THIS YEAR! Continuing Discussion Groups

This year's Spring Meeting will offer three small Discussion Groups as a new type of programming. The format will be presentations and discussions focused on a specific general topic facilitated by a leader in that field. These groups will be limited to 20 participants to provide an intimate and enriching conversation on clinical and theoretical material with experts in their respective fields. Our initial offerings will be on Trauma, Erotic Transference and Countertransference, and Children and Adolescents. There will be no additional cost to attend one of the Discussion Groups, but sign-up at the time of the Meeting Registration is required and on a first-come basis.

*Please see session details on pages 14, 29 and 45.*

Thursday, April 4, 2019  
5:45pm



## St. Thomas Gospel Choir

Rated as one of the best, the 60 choir members of all ages and backgrounds represent over 10 different area churches. Based at the historic African Episcopal Church of St. Thomas in Philadelphia, the St. Thomas Gospel Choir shares their music at over 100 services, programs, concerts, and celebrations of all kinds every year. Among their sold out performances was one at Radio City Music Hall in New York City. They have also performed as far as San Jose and Limon in Costa Rica and an 11 day tour in Rome, Florence and Venice, Italy in June 2018. Their joyous music resonates with every audience and we are fortunate to have them with us on **Thursday evening in Millennium Hall at 5:45pm**. It is a don't miss experience that will have you dancing in the aisles.

[www.stthomasgc.org](http://www.stthomasgc.org)

Thursday, April 4, 2019  
6:00pm-10:00pm

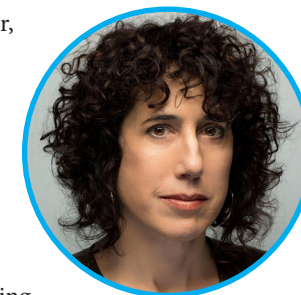
## Welcome Reception, Poster Presentations and Evening Program

Please join us for the Welcome Reception and take time to meet and chat with this year's poster presenters. Following this will be a Conversation with Eve Ensler (playwright, author and activist) and Jennifer Fox (filmmaker and director) moderated by Jill Gentile and Ken Feiner, that will address each other's work, their experiences of sexual abuse and psychotherapy in their lives and art, and offer their reflections as female artists on the impact of the #MeToo movement. Selected film clips will be shown. Ample time will be provided for audience Q & A. The program will take place in **Millennium Hall at 8:00pm**.



**EVE ENSLER** is best known for her play, *The Vagina Monologues*, which in 2006, was called by Charles Isherwood of *The New York Times* "the most important piece of political theater of the last decade" and, which was recently included in the newspaper's list of the 25 best American plays since 1993. Ensler has written numerous plays including *The Good Body*, *Emotional Creature*, and *In the Body of the World*. She is the founder of V-Day, the global activist movement that raised over \$100 million to stop violence against women and girls.

**JENNIFER FOX** is an internationally acclaimed producer, director, and writer whose groundbreaking and award winning films include: *Beirut*, *the Last Home Movie*, *An American Love Story*, and *Flying Confessions of a Free Woman*. Her first narrative feature, *The Tale*, premiered at the 2018 Sundance Film Festival to critical acclaim, and was nominated for an Emmy Award. The film has spawned an international educational outreach campaign to promote awareness of childhood sexual abuse. Fox has been nominated for several awards including a Gotham in the Breakthrough Director category.



Friday, April 5, 2019

10:30am-12:15pm

## When Peter Pan Lurks in the Shadows: Development, Psychoanalysis and the Catastrophic Longitudinal Effect of Childism



**NORKA T. MALBERG, PsyD**

Dr. Norka T. Malberg is a Certified Child and Adolescent Psychoanalyst. She is a member of the Western New England Psychoanalytic and the Contemporary Freudian Societies. She trained at the Anna Freud Centre in London and obtained her clinical doctorate from University College London. She is an Assistant Clinical Professor at the Yale Child Study Center as a member of the early childhood team in New Haven, CT where she is in full-time practice working with children and adults as a psychoanalyst and in the community as a consultant to schools and other service organizations. She is an active member of Section 2 (Child and Adolescent) of Division 39 and of the Association for Child Psychoanalysis where she serves as Chair of the Social Issues Committee. Dr. Malberg is co-editor a book of the Lines of Development Book Series for which she co-edited the first book: *The Anna Freudian Tradition*. Dr. Malberg is co-editor of the Child and Adolescent Sections of the recently published PDM-2 (Psychodynamic Diagnostic Manual). She is one of five authors of the recently published book: *Time limited MBT-C* published by the American Psychological Association Press and a guest master clinician for the APA video series on Metalization. She is originally from San Juan, Puerto Rico.

Saturday, April 6, 2019

10:30am-12:15pm

## Recognizing the Other in the Face/Place of Social Injustice: Reconsidering Responsibility

### Keynote Speakers



**JESSICA BENJAMIN, PhD**, is a supervising faculty member of the New York University Postdoctoral Psychology program in Psychotherapy and Psychoanalysis and at the Stephen Mitchell Center for Relational Studies where she is a founder and board member. She has been part of the relational psychoanalytic movement from its inception, helped to found the relational track at New York University Postdoctoral, the International Association for Relational Psychoanalysis and Psychotherapy and the Mitchell Center for Relational Studies as well as the journal *Studies in Gender and Sexuality*. She is the author of *The Bonds of Love (1988)*; *Like Subjects, Love Objects (1995)*; and *Shadow of the Other (1998)*. Her most widely cited article is "Beyond Doer and Done to: An Intersubjective view of Thirdness" (*Psychoanalytic Quarterly*, 2004). Her new book *Beyond Doer and done To: Recognition Theory, Intersubjectivity and the Third* appeared with Routledge in 2017/18. From 2005-2010 she initiated and directed "The Acknowledgment Project" together with Dr. Eyad el Sarraj of Gaza involving Israeli and Palestinian mental health practitioners and international dialogue leaders. Her current work considers the importance of acknowledgment with reference not only to clinical practice but also collective, historical trauma.



**FRANCISCO J. GONZÁLEZ, MD**, is a Personal and Supervising Analyst & Faculty at the Psychoanalytic Institute of Northern California (PINC), where he also serves as Co-Chair of the Community Psychoanalysis Committee, which won the 2017 APF/Division 39 Grant for innovation in psychoanalytic education. He is a founding member of Reflective Spaces Material Places, now in its 6th year, a meeting place for public and private analytic providers working in and with community on matters including mental health and race/racialization, immigration, social justice, and material inequity. He presents and writes on a variety of issues often having to do with the social link in psychoanalysis, including such topics as immigration, psychoanalytic identity, queer gender and sexuality, film, severe mental states, political processes in analysis, and collective dimensions of subjectivity. He serves on the editorial boards of *Psychoanalytic Dialogues and Studies in Gender and Sexuality*, and has been the recipient of the Symonds Prize (Studies in Gender & Sexuality) and the Ralph Roughton Award (American Psychoanalytic Assoc).

(continued on following page)

# KEYNOTE PLENARY (cont'd)

**Saturday, April 6, 2019**

**10:30am-12:15pm**

## Keynote Speaker



**KATHLEEN POGUE WHITE, PhD**, Principal, Pogue White Consultancy, LLC, is a psychoanalyst, executive coach, and organization consultant. She is an experienced educator and was a founding member and past director of the Organization Program at the William Alanson White Institute for Psychology and Psychoanalysis. She is currently a core faculty for an advanced coaching offering, the Dynamics of Consulting Program, NY. She is a member

of the AK Rice Institute, International Society for the Psychoanalytic Study of Organizations (ISPSO), and a Professional Associate of the Tavistock Institute of Human Relations. Kathleen has published papers and given numerous talks on such issues as using the consultative stance in organization role consultation; opening a Race Dialogue in the psychoanalytic dyad; and the importance of developing reflective practice skills in organizational role consultation. Her publications include: "The Price of the Fear of Fading: Some thoughts on women's resistance to taking the role of Elder from a psychoanalytic perspective," *Socio-Analysis* 16, 7-20, 2014; "Surviving hating and being hated: Some personal thoughts about racism from a psychoanalytic perspective," *Contemporary Psychoanalysis*, 38(3), 401-422, 2002; "Applying learning from experience: The Intersection of Psychoanalysis and Organizational Role Consultation," *The Systems-Psychodynamics of Organizations*. London: Karnac, 1997.

## Panel Convener



**RACHEL KABASAKALIAN MCKAY, PhD**, is Co-Director of the Institute for Relational Psychoanalysis of Philadelphia, and faculty member at the Stephen Mitchell Center for Relational Studies in New York.

## Moderator



**MELANIE SUCHET, PhD**, is Faculty member at NYU Postdoctoral Program in Psychotherapy and Psychoanalysis and the Stephen Mitchell Center for Relational Studies in New York.

Full bios available online: [www.division39springmeeting.com](http://www.division39springmeeting.com)

**WEDNESDAY, APRIL 3, 2019**

**1:00pm-4:00pm**

**Pre-Conference Workshops**

**Pre-Conference  
Workshop**

**3 Credits**

**Anthony Room  
3rd Floor**

### Re-Minding The Brain: Psychoanalysis and Psychological Assessment

This workshop will familiarize participants with a theoretical model and prototype of clinical practice that integrates Psychoanalysis and Psychological Assessment.

**Presenters:** William Braun, PsyD  
Benjamin Rubin, PsyD

**Pre-Conference  
Workshop**

**3 Credits**

**Jefferson Room  
3rd Floor**

### What's Wrong With My Clinical Theory? What's Right About Yours?

In this workshop, Lewis Aron, Sue Grand and Joyce Slochower invite you to step back from your own way of working and thinking about clinical processes.

**Presenters:** Lewis Aron, PhD, ABPP  
Sue Grand, PhD  
Joyce Slochower, PhD, ABPP

## The Marsha D. McCary Fund for Psychoanalysis

The Marsha D. McCary Fund for Psychoanalysis, established in 2010, recognizes and promotes contributions of psychoanalysis to psychology as a science and a profession. Since 2014, the Fund has awarded grants of \$4,000 to \$6,000 annually to support programs in public awareness, educational innovation, community services and research. Our grants target populations in need of support such as early career professionals, students from diverse backgrounds, and therapists working with underserved populations. Since its founding, the Fund has received over \$200,000 in donations and pledges from almost 150 individuals and organizations. At this critical time for psychoanalysis, please help us take the future into our own hands by donating to the Fund now.

The conference registration form has a place for Division Fund donations.

Visit [www.division39springmeeting.com/register](http://www.division39springmeeting.com/register)  
to access the registration form.



8:00am–4:00pm

Division 39 Board Meeting **Lescaze Room** 33rd Floor

8:30am–10:15am

Sessions and Presentations

Panel

TH-01

1.75 Credits

**Adams Room**  
3rd Floor

**Resonance and its Discontents: Shifting Sameness and Difference in the Therapeutic Dyad**

This panel will explore experiences within the therapeutic dyad when resonance in sexual identity shifted over the course of treatment, and clinical moments when this resonance (or lack thereof) was revealed in surprising ways outside the consulting room. Case material/discussion will examine finding and losing resonance in sexual identity as pathways to mutuality, a sense of community, as well as grief.

**Presenters:** Sara K. Bressi, PhD, LSW  
Kyle J. Schultz, PsyD

**Chair/Discussant:** Matthew L. Whitehead, PsyD

Roundtable

TH-02

1.75 Credits

**Anthony Room**  
3rd Floor

**Contemporary Challenges of Childhood: Playing for Our Lives**

When children are marching for their lives, play is difficult. Three experienced child therapists recognize the impact of contemporary cultural realities on the therapeutic encounter. The purpose of this roundtable is to process together the implications to the co-creation of safety in child therapy for children, parents and therapists.

**Presenters:** Laurel M. Silber, PsyD  
Marjorie W. Bosk, PhD, ABPP  
Jacqueline Gotthold, PsyD

Discussion Group #1

**Parlor P-2**  
3rd Floor

**Cacophony and Resonance in Working with Complex Trauma**

This case presentation will focus on a psychoanalytic psychotherapy with an adult female who has a history of complex trauma and dissociation. According to her therapist, Ryan Parker, the patient works diligently to understand the origins, needs, intentions, and embodied experiences of the parts of herself.

**Presenter:** Ryan Parker, LCSW  
**Chair:** JoAnn Ponder, PhD  
**Discussant:** Elizabeth F. Howell, PhD

Panel

TH-03

1.75 Credits

**Tubman Room**  
3rd Floor

**Strangers in Paradise: Listening to the Foreigner in Children and Adolescents**

Presenting treatments along the developmental ladder, this panel takes up the experience of otherness and other voices. A young girl discovers her animalistic, unladylike self. A 12 year old questions her parents "less than" image of her. And an adolescent case of Wicka; a teen drawn to witchcraft.

**Presenters:** Seth Aronson, PsyD  
Francesca Schwartz, PhD  
Susan Goodman, LCSW

Panel

TH-04

1.75 Credits

**Washington A**  
3rd Floor

**Silenced Voices: Epistemic Injustice, Ethical Loneliness, and the Devastation of Marginalization**

Addressing systematic marginalization and sociocultural denial, panelists consider ways in which ideas of epistemic injustice (refusal to recognize certain groups as legitimate holders of knowledge) and ethical loneliness (the isolation that occurs with systematic injustice) can help us to contextualize and enrich our psychoanalytic understandings of projection and alienation.

**Presenters:** Marilyn Charles, PhD, ABPP  
Annie Lee Jones, PhD  
Bianca Manrique, PA  
**Moderator:** Natalia Potter, LMSW

Panel

TH-05

1.75 Credits

**Washington B**  
3rd Floor

**Warts and All: Turning a Critical Eye on our own Theory**

We psychoanalysts formulate our theory in contradistinction to that of the Psychoanalytic Other. This defensive orientation forecloses a frank investigation of our own clinical/theoretical lacks. This panel moves beyond "othering" by inviting two well-known clinicians to cast a critical eye on their own theory.

**Presenters:** Barry Magid, MD  
Joyce Slochower, PhD, ABPP  
**Chair:** Maureen Murphy, PhD  
**Discussant:** Lewis Aron, PhD, ABPP

Collaborative Panel

TH-20

1.75 Credits

**Washington C**  
3rd Floor

*in collaboration with the Early Career professional Committee*

**Are We Being Framed by Technology?: Intrusions, The Unconscious, and the Challenge of Working in the Digital Age**

This panel, comprised of four early career psychologists, examines the impact of technology on the therapeutic encounter and frame. Particular attention will be paid to the ways in which technological advances affect intimacy in the therapeutic dyad, expression of uncomfortable affect states, unconscious desires and fears, and the classical understanding of the frame in psychoanalytic practice. These panelists set out to wrestle with the zeitgeist in which they find themselves practicing and living, and all that comes with it in this rapidly changing technocultural society; the outdated, the updated, and the innovated.

**Presenters:** Laura Levin, PhD  
Brian Brown, PsyD  
Carrie Nantais, PhD  
Tanya H. Hess, PhD  
**Chair:** Brian Brown, PsyD  
**Co-Chair:** Laura Levin, PhD

10:30am-12:15pm

Sessions and Presentations

Panel

TH-06

1.75 Credits

Millennium Hall  
2nd Floor

**Women's Voices in Opera: Live Performance of Three Arias**

Through the live performance of three arias by Carmen, Maddelena, and Lucretia, the presentation will explore the ways in which the power and beauty of their music subverts patriarchy and thus transcends through nonverbal means their subjugation and their tragic deaths.

**Presenters:** Ellen Toronto, PhD  
Emily Toronto

Panel

TH-07

1.75 Credits

Adams Room  
3rd Floor

**Prison, Boardroom, Elected Office, Consulting Room: How Psychopaths Seduce, Beguile, Elude Detection, and Induce Dissociation**

We explore the personal qualities and psychodynamics characterizing the psychopath. Charm, ruthlessness, deception, unconstrained by shame or guilt, psychopaths are motivated by self-interest and maintaining and expanding their grandiose self-structure. We explore counterdissociation; dissociation analysts manifest when faced with dissociative, traumatic, overwhelming material in patients with psychopathic abusers.

**Presenters:** Sheldon Itzkowitz, PhD  
Elizabeth F. Howell, PhD  
Richard B. Gartner, PhD  
**Discussant:** Sheldon Itzkowitz, PhD

Panel

TH-08

1.75 Credits

Anthony Room  
3rd Floor

**The Embodiment of Sameness and Difference in Treatment and Society**

This panel shows how the bodily experience of sameness and difference functions in treatment and in society. It examines the intensification of the sameness-difference binary in the aftermath of both individual and societal traumas and explores embodied imitation in treatment as well as in copy-cat violence in society.

**Presenters:** Doris Brothers, PhD  
Jon Sletvold, PsyD  
**Discussant:** Karen Starr, PsyD

Panel

TH-09

1.75 Credits

Tubman Room  
3rd Floor

**Hearing Voices: Lacan on Psychosis**

In this panel a variety of perspectives are presented that examine what Lacan had to say about psychosis, from his nuanced theories represented in select texts, including omissions, extrapolations, and new applications, as well as how clinical methodology and technique have been adapted and advanced by practitioners treating psychotic individuals.

**Presenters:** Jon Mills, PsyD, PhD, ABPP  
Marilyn Charles, PhD, ABPP  
**Chair:** David L. Downing, PsyD, ABPP

Roundtable

TH-10

1.75 Credits

Washington A  
3rd Floor

**What's Going On? Supervision across Racial Lines in Community Mental Health**

Issues presented by same-race and cross racial supervision will be explored from the perspective of one Black supervisee who worked with a White and a Black supervisor (all women). We discuss how racialized experiences were addressed in both supervisory relationships and as an aspect of the the therapeutic alliance.

**Presenters:** Ellen D. Nasper, PhD  
Nakia M. Hamlett, PhD  
LaToya Gaines

Panel

TH-11

1.75 Credits

Washington B  
3rd Floor

**Collisions of Transgenerational Trauma, Moral Omnipotence and Gendered Dilemmas in the Clinic, in the US and in Ourselves**

This panel illuminates ways that cultural experience and social histories resonate in our relationships, minds and bodies. Looking at how social and psychic violence, past and present, impacts experiences of race, class, gender and sexual orientation, the papers explore transgenerational trauma as it resonates between the sociopolitical and clinical environments.

**Presenters:** Sandra Silverman, LCSW  
Deborah Sherman, BC-DMT, LMHC  
Malin Fors, MSc  
**Chair/Discussant:** Katie Gentile, PhD

Invited Panel

TH-12

1.75 Credits

Washington C  
3rd Floor

**Feet on the Ground: Leading the Way for Community Psychoanalysis**

Three generations of psychoanalytically-informed practitioners will discuss their experiences with leading the way for psychoanalysis in under-resourced community-based settings serving marginalized persons through multiple modalities including practice, teaching, and supervision. Panelists will explore working with clients' transference to community-based institutions, practicing psychoanalytically within the regulatory and financial constraints of the community-clinic, and how this work feels rewarding, invigorating and psychically necessary for the clinician. In addition, feedback from therapists participating in a program sponsored by the Section for Applied Clinical Psychoanalysis, and designed to spark the interest of front line staff in community mental health settings in psychoanalytic modes of understanding and practice, will be discussed.

**Presenters:** Ghislaine Boulanger, PhD  
Almas (Ally) Merchant, PhD  
Jordan J. Dunn, MA  
**Chair:** Sara K. Bressi, PhD, LSW

12:15pm–2:00pm

Lunch Break

12:15pm–2:15pm

Scholar's Reception **Howe Room** 33rd Floor

2:15pm–4:00pm

Sessions and Presentations

Panel

TH-13

1.75 Credits

**Millennium Hall**  
2nd Floor

**Resonating in a Different Register: The Musical Dimensions of Psychoanalysis**

Stepping outside the typical verbal register of the conference space, the panelists, three musician-clinicians, will give a live performance and invite audience responses and associations. The panelists will then offer their own reflections on the vicissitudes of sameness, difference, and mutuality in musical performance and psychoanalytic praxis. More discussion follows.

**Presenters:** Elizabeth Clark, PsyD, Soprano  
Scott D. Pytluk, PhD, ABPP, Clarinet  
Nina K. Thomas, PhD, ABPP, piano  
**Chair:** Steven H. Knoblauch, PhD

Panel

TH-14

1.75 Credits

**Adams Room**  
3rd Floor

**Losing Our White Minds: An Intervention**

We will present from three different racial perspectives. Marginalization, code switching, the lack of containment available for engaging race, the ethics of practicing without teachers, mentors and supervisors of color, and ways to de-construct privilege and the effects of race and power in all clinical interactions will be discussed.

**Presenters:** Regina Shields, PhD  
Diane Swirsky, PhD  
Lani Chow, PhD  
Mahima Muralidharan, PsyD

Panel

TH-15

1.75 Credits

**Anthony Room**  
3rd Floor

**Don't just do something: stand there!! Dealing with Trauma and Racial Injustice in and Beyond the Consulting Room**

What is the clinician's stance in the face of racial injustice and suffering? Can we be both containers for suffering and activists for justice? Honoring social context and historical trauma, the authors offer point and counterpoint to each other's perspectives. A lively discussion will be encouraged.

**Presenters:** Joan Berzoff, MSW, EdD  
Christine Schmidt, MSW  
**Chair:** Jaine L. Darwin, PhD, ABPP

Panel

TH-16

1.75 Credits

**Tubman Room**  
3rd Floor

**LatinX/LatinΨ: Current Psychoanalytic Theorizing about Latinos, Latino communities, and Anti-Latino Rhetoric**

Examines the rise of anti-Latino rhetoric in American politics as symptomatic of shifting individual and collective identities; Kernberg's model of oscillating object-relations alongside Benjamin's theory of intersubjectivity and the moral third applied to Latino communities; and, assumptions about the applicability of psychoanalysis to marginalized Latino communities.

**Presenters:** Ricardo C. Ainslie, PhD  
Patricia Gherovici, PhD  
Daniel Gaztambide, PsyD  
**Moderator:** Christopher Christian, PhD, ABPP

Roundtable

TH-17

1.75 Credits

**Washington A**  
3rd Floor

**Other Voices, Other Rooms: Graduate Students Speak of their Experiences Working with Youth in the Public Sector**

This roundtable featuring six graduate students, clinicians in the public sector, presenting challenging aspects of their work with children and adolescents today. Issues include work with transgender youth, cross racial and ethnic dyads, and negotiating the interface of culture and bureaucracy. Audience participation in general discussion is encouraged.

**Presenters:** Seth Aronson, PsyD  
Larry Rosenberg, PhD  
Amira Hanna, Soo Hyun Cho, Kareen Matouk  
Felicia Sitrin, Noelle Wilson, Molly Wolosky  
**Discussant:** Larry Rosenberg, PhD

Collaborative Panel

TH-18

1.75 Credits

**Washington B**  
3rd Floor

*in collaboration  
with the Research  
Committee*

**The Alliance in Psychotherapy: Contemporary Research in Honor of Jeremy Safran**

Colleagues and students of the late Dr. Jeremy Safran will honor his memory by presenting contemporary psychotherapy research on the therapeutic alliance. Dr. Eubanks will present an alliance-focused case formulation for attending to ruptures with personality disorder patients. Dr. Zilcha-Mano will propose a new model for the therapeutic role of the alliance in psychotherapy. Dr. Reading will evaluate therapist Reflective Functioning as a predictor of process and outcome in Brief Relational Therapy. Dr. Muran will provide a discussion of research on the therapeutic alliance, and Dr. Safran's lasting contribution to our field.

**Presenters:** Catherine F. Eubanks, PhD  
Sigal Zilcha-Mano, PhD  
Romy A. Reading, PhD  
**Chair:** Kevin Meehan, PhD  
**Moderator:** Tracy A. Prout, PhD  
**Discussant:** J. Christopher Muran, PhD

2:15pm-4:00pm

Sessions and Presentations (continued)

Invited Panel

TH-19

1.75 Credits

Washington C

3rd Floor

**Psychic Emancipation in a Racialized Society — Clinical Considerations**

Because racism, as an outgrowth of American slavery and its aftermath are foundational to our society, racist fantasies (conscious and unconscious) are an inherent aspect of human existence and cause trauma on an incomprehensible scale. Clinicians' unawareness of their 'racist states of mind' and their complex countertransference reactions preclude effective treatment with patients whom are racially different, if unacknowledged. This panel will address core dilemmas that compromise working in an increasingly multi-racial society, providing clinical examples that demonstrate the work needed to deepen the therapeutic encounter when it comes to race and cultural bias.

**Presenters:** Dionne R. Powell, MD  
Dhwani Shah, MD

**Chair:** Jill Ragozzino McElligott, MSS, LCSW

4:00pm-4:30pm

Break Millennium Foyer 2nd Floor

4:30pm-6:00pm

President's Address, Awards and Welcoming Ceremony

Award Ceremony

Millennium Hall

2nd Floor

**Leadership Award:** Lynne Layton, PhD

**Diversity Award:** Shara Sand, PsyD

**Research Award:** Jacques P. Barber, PhD, ABPP

**Scholarship Award:** Stephen Seligman, DMH

**Founders Award:** Marilyn Metzler, PhD, ABPP

*(please see bios on pages 21-22; full bios are available online)*

**Chair:** Barry Dauphin, PhD, ABPP

**Awards Committee Chair:** Elliot Jurist, PhD, PhD

The **St. Thomas Gospel Choir** will be performing at 5:45pm.  
*Please see website for bio and more details.*

6:00pm-7:30pm

Welcome Reception and Poster Presentations

Millennium Foyer 2nd Floor *(please see poster list on page 23)*

8:00pm-10:00pm

Special Program

Millennium Hall

2nd Floor

**A Conversation with Eve Ensler and Jennifer Fox with Kenneth Feiner and Jill Gentile**

Ken Feiner and Jill Gentile will moderate a conversation between Eve Ensler, playwright & author (The Vagina Monologues), and Jennifer Fox, filmmaker and director (The Tale), that will address each other's work, their experiences of sexual abuse and psychotherapy in their lives and art, and offer their reflections as female artists on the impact of the #MeToo movement. Selected film clips will be shown to stimulate conversation and illuminate themes that arise during the discussion. Ample time will be provided for audience Q & A.

**Presenters:** Eve Ensler, Jennifer Fox  
*(please see bios on page 9; full bios available online)*

**Moderators:** Jill Gentile, PhD  
Kenneth Feiner, PsyD



**LEADERSHIP AWARD**

**LYNNE LAYTON, PhD**

Lynne Layton is a psychoanalyst and Assistant Clinical Professor of Psychology, Part-Time, Harvard Medical School. She supervises at the Massachusetts

Institute for Psychoanalysis and is adjunct faculty in the Community Psychology, Liberation Psychology, and Ecopsychology Ph.D. program at Pacifica Graduate Institute, where she teaches a course on social psychoanalysis. Her writing and teaching has centered on identity formation and the ways that clinicians unconsciously reproduce and resist reproducing gender inequality, racism, heterosexism, and classism in clinical encounters. Her concept of "normative unconscious processes" has been taken up by numerous clinicians. She has been a leading voice in the field in advocating for a social psychoanalysis that counters the individualist tendency to dissociate people from their social and historical context. Currently past-president of Section IX (Psychoanalysis for Social Responsibility), she led an effort during her presidency to craft an apology to native peoples for harm done by psychology.



**DIVERSITY AWARD**

**SHARA SAND, PsyD**

Shara Sand, Psy.D. received her doctorate in clinical psychology from the Ferkauf Graduate School of Psychology, Yeshiva University, Albert Einstein College of Medicine and her Postdoctoral training in Medical Psychology/AIDS at St. Luke's/Roosevelt Hospital Center, NYC. She recently retired as an Associate Professor of Psychology at LaGuardia Community College, but has retained her position as Adjunct Assistant Clinical Professor of Psychology at the CUNY Doctoral Program in Clinical Psychology. Dr. Sand is the Director of Counseling at the Manhattan School of Music and maintains a private practice in Manhattan specializing in gender and sexual identity. Her interests in psychology, music, gender and sexuality are an integral part of her work and she has written about sexual/gender orientation, sexual/gender identity, performing and creative artists, as well as social justice issues, receiving several grants in these areas of study. Dr. Sand has also lectured on issues related to illness and end-of-life issues, torture and interrogation and the psychological impact of hatred and stigma.

*(continued on following page)*

Full bios available online: [www.division39springmeeting.com](http://www.division39springmeeting.com)

# AWARD RECIPIENTS 2019

(continued from  
previous page)

## RESEARCH AWARD **JACQUES P. BARBER, PhD, ABPP**



Jacques P. Barber, Ph.D., ABPP is Professor and Dean, Gordon F Derner School of Psychology formerly the Institute of Advanced Studies in Psychology at Adelphi University. He is emeritus professor of psychology in the Department of Psychiatry and in the Psychology Graduate Group at the University of Pennsylvania. He is also Adjunct Professor of Psychiatry at New York University School of Medicine. He is past president of the International Society for Psychotherapy Research and was a recipient of its early career award in 1996 and its Distinguished Research Career Award in 2014. He recently received the Distinguished Psychologist Award from the Society for the Advancement of Psychotherapy (Division 29, 2018). He has been visiting professor at the Department of Clinical Neuroscience of the Karolinska Institute in Stockholm and at two universities in Australia. He is a licensed clinical psychologist in New York and Pennsylvania. His research focuses on the outcome and process of psychodynamic and cognitive therapies for depression, panic disorder, substance dependence and personality disorders.

## SCHOLARSHIP AWARD **STEPHEN SELIGMAN, DMH**



Stephen Seligman is Clinical Professor of Psychiatry at the University of California, San Francisco; author of *Relationships in Development: Infancy, Intersubjectivity, Attachment* (Routledge, 2018); Joint Editor-in-Chief of *Psychoanalytic Dialogues*; Training and Supervising Analyst at the San Francisco Center for Psychoanalysis and Psychoanalytic Institute of Northern California. He is Clinical Professor of the New York University Postdoctoral Program in Psychoanalysis and on the faculty of the Infant Mental Health Certificate Programs at UC-Davis and University of Massachusetts, Boston. In addition, he is the co-editor of the American Psychiatric Press' *Infant and Early Childhood Mental Health: Core Concepts and Clinical Practice*. He is also associate editor of *Studies in Gender and Sexuality*, and was a member of the founding executive board of the *Journal of Infant, Child and Adolescent Psychotherapy*. Dr. Seligman continues the project of bridging psychoanalysis and infancy intervention and research.

## FOUNDERS AWARD **MARILYN METZL, PhD, ABPP**

Marilyn MetzL is a psychoanalyst and clinical assistant Professor at the University of Missouri-Kansas City School of Medicine. She also supervises and teaches at The Greater Kansas City-Topeka Psychoanalytic Institute and is Adjunct Faculty at the University of Kansas. She has reviewed written commentary on 38 professional publications and has authored 13 published articles, has presented both nationally and internationally on topics such as self-esteem, depression, men's issues, social competence, women's human rights, attention deficit across the lifespan, anxiety disorders, and narcissism. Dr. MetzL is past-President of Sections III, Women; IV, Local Chapters; and VII, Couples and Family, and is on the teaching faculty of the Chinese-American Psychoanalytic Alliance.



# POSTER PRESENTATIONS

Poster submissions were evaluated by the Division 39 Research Committee. The two highest ranking posters from a graduate student or Early Career Professional will be selected as "Division 39 Scholars" at the Poster Presentation Session on Thursday evening, April 4.

Abstracts for these posters are available at  
[www.division39springmeeting.com/poster-submissions/](http://www.division39springmeeting.com/poster-submissions/)

## Defensive Functioning and its Relationship to Personality and Wellbeing in College Students

**Saja Almusawi, BA** Clinical Psychology Doctoral Student, University of Detroit Mercy, Detroit, MI; **Caleb Siefert, PhD**, University of Michigan Dearborn, Dearborn, MI; **John H. Porcerelli, PhD, ABPP** University of Detroit Mercy, Detroit, MI

## Interoception and Body Representations in Dancers

**Amanda Arena-Miller, PhD** Candidate in Clinical Psychology, The New School for Social Research, New York, NY

## Vicarious Traumatization of Therapists: Implicit Assessment via Language Use

**Nicole Belletti, MA**, Doctoral Student Clinical Psychology, Derner School of Psychology, Adelphi University, Garden City, NY

## Defending Against Death Anxiety: Narcissistic Personality Features, Self-Esteem, and Self-Enhancement

**Leslie Bermingham, MA, PhD** student Clinical Psychology, Long Island University, Brooklyn, NY; **Thomas Mounsey, MA, PhD** student Clinical Psychology, Long Island University, Brooklyn, NY; **Kevin Meehan, PhD**, Program in Clinical Psychology, Long Island University, Brooklyn, NY

## Anaclitic-Introjective Personality Traits and Client Outcomes in Psychoanalytic Treatment

**Luke Bieber, MA, Elizabeth Bryant, MA, Marc Schwendemann, BA**, Graduate Students; **Karl Stukenberg, PhD, ABPP**, Faculty Advisor, Xavier University, Cincinnati, OH

## Reflective Functioning and the Working Alliance as Predictors of Psychoanalytic Treatment Outcomes

**Elizabeth Bryant, MA, Luke Bieber, MA, Marc Schwendemann, BA**, Graduate Students; **Karl Stukenberg, PhD, ABPP**, Faculty Advisor, Xavier University, Cincinnati, OH

## Psychotherapists Undergoing Psychotherapy: An Examination of Psychological Well-Being

**Katherine Cadwalader, MS, Behnoosh Nadealizadeh, MS, MA, Amanda Clark, MS**, Graduate Students; **Alexandru Cue, PhD**, Faculty Sponsor; Nova Southeastern University, Fort Lauderdale, FL

# POSTER PRESENTATIONS (CONTINUED)

## Evaluation of Regulation-Focused Parent Groups for Parents of Children with Oppositional Defiant Disorder

**Tali Clements, MS, Sophia Aizin, MA, Doctoral Candidates; Tracy A. Prout, PhD, Advisor; Ferkauf Graduate School of Psychology, Yeshiva University, New York, NY; Timothy R. Rice, MD, New York Psychoanalytic Society and Institute, Leon Hoffman, MD, Mount Sinai Hospital, New York, NY, Advisors**

## The End of Privacy As We Know It: Implications for Psychoanalysis

**Sarah Davis, BA, Current MA Student, Eastern University, St. Davids, PA; Madison Oberndorf, BA, Dani Saliari, BA, Jonathan O'Hadi, BA, Remi Appel, BA, Marie Salerno, Matthew Berler, MsEd, School/Clinic-Child Psychology PsyD program, Pace University, New York, NY; Leora Trub, PhD, Pace University, New York, NY; Danielle Magaldi, PhD, Lehman College, City University of New York**

## The Relationship Between Therapist Emotional Characteristics and Patient Retention in an Urban Community Clinic

**Roberta Goldman, BA, Ben Bernstein, BA, Michael Ferrara, BA, Michelle Hernandez, BA, Sasha Rudenstein, PhD, City College, City University of New York**

## Qualitative Analysis of Alliance Formation, Rupture, and Repair Themes in Psychotherapy for Pregnancy Loss Patients From the Therapist's Perspective

**Shivam K. Gossai, Graduate Student; Rayna D. Markin, Associate Professor; Department of Counseling and Education, Villanova University, Villanova, PA**

## Identity, Instability and Inebriation: A Psychoanalytic Exploration of the Mediating Effect of Borderline Personality Disorder on the Associations Between Separation-Individuation Outcomes, Substance Use Disorder and Alcohol Use Disorder

**David Gottlieb, PsyD, Beth Hart, PhD, Nils Myszkowski, PhD, NYU Postdoctoral Program in Psychotherapy and Psychoanalysis, New York, NY**

## The Impact of the Presence of Comorbid Personality Disorder Traits on Defensive Functioning for Individuals Diagnosed with Panic Disorder

**Kathryn Graham, BA, Fernando Krause, MA, Mathew Brigante, MA, Clinical Psychology Doctoral Candidates; Jacques P. Barber, PhD, Mary V. Minges, PhD, Faculty, Derner School of Psychology, Adelphi University, Garden City, NY; Barbara Milrod, MD, Weill Cornell Medicine, New York, NY; Dianne Chambless, PhD, University of Pennsylvania, Philadelphia, PA**

## Exploring the Relationship Between Mindfulness and Psychodynamic Theory: Defensive Functioning and Reflective Functioning

**Lara Gross, MS, Doctoral Candidate, Leslie Parkes Shralow, PhD, Cheryl Rothery, PsyD, Kevin McCarthy, PhD, Chestnut Hill College, Philadelphia, PA**

## The Mediating Role of Emotional Intelligence and Emotion Regulation in the Relation Between Attachment Characteristics and Aspects of Personality Organization

**Kseniia Gvozdieva, MA, Michelle Hernandez, BA, Sasha Rudenstein, PhD, Adriana Espinosa, PhD, Clinical Psychology Program, City College of New York**

## Therapist Perceived Ruptures: Comparisons Between Therapist and Observer Ratings and the Impact of Therapist Attachment

**Charlotte Howson, BA, Jasmine Kaleka, BA, Jordan Ohanesian, MA, Molly Tulipan, BA, Cheri L Marmarosh, PhD, Professional Psychology Program, The George Washington University, Washington, DC**

## The Impact of Psychoanalysis on Anaclitic and Introjective Depressive Personality Features: A S W A P-200 Outcome Study

**Callie E. Jowers, MS, and Rachel Pad, BGS, Doctoral Students, University of Detroit Mercy, Detroit, MI; John H. Porcerelli, PhD, ABPP, Psychology Clinic Director, University of Detroit Mercy, Detroit, MI; Rosemary Cogan, PhD, ABPP, Professor Emeritus, Texas Tech University, Lubbock, TX**

## The Needy Patient: A Meta-Analysis on Interpersonal Dependency in Psychotherapy

**Fallon A. Kane, MA, Graduate Student, Derner School of Psychology, Adelphi University, Garden City, NY**

## Patient Improvements in Eating Disorder Treatment

**Andrea Keffer, MsEd and Garrett Tanner, MA, Doctoral Candidates in Clinical Psychology; Rebecca Curtis, PhD, Professor of Psychology; Derner School of Psychology, Adelphi University, Garden City, NY**

## Do Broken Bones Heal Stronger? The Impact of Rupture and Repair on the Real Relationship

**Ceeste M. Kelly, MPsy, Alexander J. Abramowicz, MPsy, Bryce R. Gold, MPsy, Lisa M. Moscattello, MPsy, Clinical Psychology Doctoral Students; Cheri L. Marmarosh, PhD, Faculty, The George Washington University, Washington, DC**

## Parental Reflective Functioning in Regulation Focused Psychotherapy for Children: Initial Findings Using the Psychotherapy Process Q-Set (PQS)

**Tatianna Kufferath-Lin, MS, Barry Eichenbaum, Samantha Mahr, Ayden Pahmer, Nofar Yaacoby, Henri Zalman, Doctoral Candidates; Tracy A. Prout, PhD, Katie Aafjes-van Doorn, PhD., Faculty, Ferkauf Graduate School of Psychology, Yeshiva University, New York, NY; Timothy Rice, MD, Department of Psychiatry, Icahn School of Medicine at Mount Sinai, New York, NY; Leon Hoffman, MD, Pacella Research Center, New York Psychoanalytic Society and Institute**

## Preliminary Steps in Establishing the Early Memory Attachment Q-Sort (EMA): A New Measure of Attachment

**Stephanie Lechich, MA, Kelly Goss, MA, Doctoral Students; Liam B. Reilly, PhD, Graduate; Philip S. Wong, PhD, Director, Clinical Psychology PhD Program, Long Island University, Brooklyn, NY**

# POSTER PRESENTATIONS (CONTINUED)

---

## Toward Understanding Difference: Psychoanalytic Reflections on Narratives

**Bess Lewis, MA**, *Doctoral Student* and **Theresa Clement Tisdale, PhD, PsyD**, *Faculty, Azusa Pacific University, Azusa, CA*

---

## Effect of Patient Attachment Style on Therapist Countertransference Type

**Tiffany Lin, MPsy**, **Natalia N. Baez, MPsy**, **Laura Bowles, MPsy**, **Greta R. Carlson, MPsy**, *Doctoral Students*; **Cheri I. Marmarosh, PhD.**, *Faculty; Professional Psychology Program, The George Washington University, Washington, DC*

---

## Blatt's Subtypes of Depression Related to Serotonin, Cortisol, Platelet Levels, and Treatment Perceptions: Implications for Heart Disease and Diabetes Risks

**Kaiwen Liu, MPsy**, **Victoria Todd, MS**, **Xi Bi, MA, MPsy**, *Doctoral Candidates* and **James Sexton, PhD**, *Assistant Professor, Professional Psychology Program, The George Washington University, Washington, DC*

---

## Validating an Observational Coding Scale for Subtypes of Parent-Adolescent Role Confusion Through the Examination of Adolescent Symptomatology

**Rebecca M. Mahan, MA**, **Stephanie B. Kors, MA**, *Doctoral Students, Clinical Psychology*; **Jenny Macfie, PhD**, *University of Tennessee, Knoxville, TN*

---

## Internalized Racism Among an Urban Clinical Population and Mindfulness as a Potential Mediator

**Lian Malki-Schubert, BA**, *Doctoral Student*; **Sasha Rudenstine, PhD**, *Assistant Professor; The City College of New York*

---

## Psychodynamic Psychotherapy for Pregnancy After Perinatal Loss: A Case Study Analysis of Alliance Rupture and Repair

**Megan McKechnie, Shivam Gosai**, *Graduate Students* and **Rayna D. Markin, Associate Professor**, *Department of Counseling and Education, Villanova University, Villanova, PA*

---

## Getting Close from Far Away: Unconscious Conflict in Searching for Love, Sex and Romance Online

**Lisa Moise, BA**, **Ana Lomidze, BA**, **Alexandra Silverman, BA**, **Megan Ludwig, BA**, **Matthew Berler, MsEd, PsyD** *School/Clinical-Child Psychology Program, Pace University, New York, NY*; **Leora Trub, PhD**, *Pace University, New York, NY*

---

## Content Analysis of the Literature on Psychoanalysis of Color: 1962 to 2018

**Maryam Omid, MA**, *Doctoral Student in Clinical Psychology*; **Megan Blocker, MA** and **Jamie Gardella, MA**, *Doctoral Students in Psychology, The New School, New York, NY*

---

## Examining Differences in Cognitive and Emotional Empathy Across Adaptive and Pathological Narcissism

**Ursula Rogers, MA**, *Doctoral Student*; **Nicole Cain, PhD**, **Linda Penn, PhD**, *Long Island University, Brooklyn, NY*

---

## Social Media Discusses Common Themes of Successful and Unsuccessful Psychotherapy: What Patients Are Saying Works for Them

**Adam Rosen, BA**, **Margaret Hilton, BA**, **Debanjoli Das, BA**, *Doctoral Students in Clinical Psychology*; **James Sexton, PhD, PhD**, *Faculty; The George Washington University, Washington, DC*

---

## Experiences of Adolescents in Residential Treatment at the Orthogenic School 2013–2015: A Qualitative Study

**Elizabeth Scholom, PhD**, *Maimonides Medical Center, Brooklyn, NY*

---

## The Role of Online Dating Harassment in Objectification of Women, Perspectives on Gender Equality, Mental Health Consequences, and Coping Styles

**Felicia R. Sitrin, MA**, **Amber N. Cope, MA**, *Doctoral Students* and **Benjamin A. Saunders, PhD**, *Clinical Psychology Program, Long Island University, Brooklyn, NY*

---

## Intellectualization, Grounding, & Creativity: The Analyst's Use of Generative Language in Session

**Lily Swistel, MA, MFA**, *Doctoral Student Clinical Psychology, Derner School of Psychology, Adelphi University, Garden City, NY*

---

## How Helpful Do Trauma Survivors Find Different Therapeutic Techniques?

**John Tanner, MA**, **Andrea Keffer, MA**, *Doctoral Candidates in Clinical Psychology*; **Rebecca Curtis, PhD**, *Professor of Psychology; Adelphi University, Garden City, NY*

---

## Early Memories of Emotion: A Qualitative Exploration of the Role of Gender Socialization in Emotional Development

**Elizabeth Uribe, BA**, *Doctoral Student*, and **Karen Lombardi, PhD**, *Derner School of Psychology, Adelphi University, Garden City, NY*

---

## Approaching History and Ourselves: Results of a Participatory Mixed Methods Study of an Interactive Racial Equity Training for Clinical Psychology Doctoral Students

**Marina R. Weiss, MA**, **N. Essosinam Ward, BA**, **Naa-Adjeley Kuma, MA**, **Sophie Cassell, MA**, **Firouz Ardalan, MA**, *Doctoral Candidates, Clinical Psychology, Derner School of Psychology, Adelphi University, Garden City, NY*

---

## Affect, Behavior & the Unconscious: Integrating Results from Youth's Self-Reported Symptomatology and Projective Tests at a Community-Based Clinic

**Laurel G. Wright, MPH, MA**, *Doctoral Student* and **Sasha Rudenstine, PhD**, *Assistant Professor, CUNY Graduate Center and City College of New York*

7:15am–8:30am

Section III Morning Conversation **Parlor P-2** 3rd Floor

**When A Tree Falls Soundlessly: The Impact and Resonance of Christine Blasey Ford – A Conversation with Carol Gilligan and Section III: Women, Gender and Psychoanalysis**

What impact has Dr. Ford’s story had on us? How has it affected our patients and what is playing out in our consulting rooms? What is our role as psychoanalysts and our community at large? How do we work through this personally, clinically, and as a profession? Let’s discuss. Continental breakfast will be served.

8:00am–5:00pm

ABAPsa Examinations **Mezzanine C**

8:30am–10:15am

Sessions and Presentations

Panel

FR-01

1.75 Credits

Commonwealth A-1  
2nd Floor

**(Re)Claiming a Space for the Voice of Research in Psychoanalytic Discourse**

Is there a conflict between psychoanalytically-oriented researchers and research—and psychoanalytical practice and practitioners—and theoreticians? Psychoanalytical researchers and academicians examine this question from the perspective of occupying positions that straddle different professional communities. Significantly, the presenters of this panel have published their research into psychoanalytical theory and practice.

**Presenters:** Robert F. Bornstein, PhD  
William H. Gottdiener, PhD  
Jon Mills, PsyD, ABPP

**Chair:** David L. Downing, PsyD, ABPP  
**Moderator:** Theresa Clement Tisdale, PhD, PsyD

Panel

FR-02

1.75 Credits

Commonwealth A-2  
2nd Floor

**Two Can Play: Allyship Experiences in Psychoanalytic Community Spaces**

This panel will address how psychologists with different identities can support one another within organizational contexts. Three dyads/partnerships will share their experiences of and challenges around allyship from psychoanalytic and queer theory perspectives. Attendees will then have the opportunity to reflect upon their own experiences with allyship.

**Presenters:** Shara Sand, PsyD  
Leilani Salvo Crane, PsyD  
Brian Brown, PsyD  
Almas Merchant, PhD  
Kori Bennett, PsyD  
Mamta Dadlani, PhD  
**Chair:** Elizabeth A. Clark, PsyD

Roundtable

FR-03

1.75 Credits

Millennium Hall  
2nd Floor

**Toward a Vital and Sustainable Future for Psychoanalysis: A Leadership Roundtable**

Roundtable participants will discuss how our profession must change and innovate in order to respond to societal trends and best serve a diverse constituency. These prominent practitioner/scholar/organizational leaders will engage each other and the audience in the creative and pragmatic task of envisioning the future of psychoanalysis.

**Presenters:** Nancy McWilliams, PhD, ABPP  
Laurel M. Silber, PsyD  
Kerry J. Sulkowicz, MD  
Usha Tummala-Narra, PhD  
Paul L. Wachtel, PhD  
Bryant L. Welch, JD, PhD  
**Chair:** Steven D. Axelrod, PhD  
**Moderator:** Dennis Debiak, PsyD

Discussion  
Group #2

Adams Room  
3rd Floor

**Erotic Transference and Countertransference**

This discussion group will provide an opportunity for attendees to consider their/our experiences with erotic transference and countertransference in the consulting room. A vignette will be emailed to attendees which exemplifies a senior clinician’s challenging experience with erotic transference-countertransference. This will be a springboard for our discussion. Come prepared to share your experiences and we will all grapple with these challenging moments in a safe and supportive environment.

**Presenters:** Judie Alpert, PhD  
Arlene (Lu) Steinberg, PsyD

Panel

FR-04

1.75 Credits

Washington A  
3rd Floor

**Resonance and Dissonance: Enactment and the use of Self in Analytic Therapy**

Increasingly, enactment is being defined, not as a discrete event, but as the continuous conscious and unconscious flow between analyst and patient. Enactment often registers as dissonant and disruptive. Through theory and case study this panel presents varying views of enactment and the role of self-disclosure in working through.

**Presenters:** Roy Barsness, PhD  
Karen Maroda, PhD, ABPP  
Tony Bass, PhD

Full Program details online!  
[www.division39springmeeting.com](http://www.division39springmeeting.com)



8:30am-10:15am

Sessions and Presentations (continued)

Scholar Award Presentation

FR-05

1.75 Credits

Washington B  
3rd Floor

**Scholarship Does Not Equal Empiricism: Nonlinear Creativity in Psychoanalytic Theory, Practice and Developmental Research**

This advanced presentation will address the methods, differences and overlap of empirical research and scholarship. "Research" once meant learning a lot about something and integrating that knowledge into something informative. Currently, though, empirical research methods have become the coin of all too many realms: While empirical research is valuable, the very long standing traditions of scholarship may well be overlooked. This presentation features the rewards of deep, thorough sorting through different sources and perspectives. The transactions between developmental research and developmental psychoanalysis will taken up in this context. The presenter will read a paper and provide opportunity for interaction with the audience.

**Presenter:** Stephen Seligman, DMH  
**Moderator:** Maureen Murphy, PhD

Invited Panel

FR-06

1.75 Credits

Washington C  
3rd Floor

**Crippling Psychoanalysis: From Ableism/ Disableism Toward Inclusion and Mutual Resonance**

Crippling – connoting an analysis of structures and assumptions to reveal able-bodied and exclusionary practices (McRuer, 2006). Increasingly divisive political rhetoric from world leaders about difference has also contributed to more fervent calls for mutuality and recognition by activists. In psychoanalysis, more attention to similarities and differences between both therapists and patients is also contributing to new understandings about subjectivity, power, privilege, and oppression. The papers and subsequent discussion will help clinicians contextualize dis/ableism, its relevance, and remedies in their own work.

**Presenters:** JoAnn Ponder, PhD  
Ari Pizer, PsyD, MMT  
Usha Tummala-Narra, PhD  
**Chair:** Sanjay Nath, PhD

Full Program details online!  
[www.division39springmeeting.com](http://www.division39springmeeting.com)

Panel

FR-08

1.75 Credits

Lescaze Room  
33rd Floor

**Frantz Fanon and Issues of Race in the Clinic and Community**

Inspired by Fanon's psychoanalytic critique of racism, this panel examines the psychodynamics of the racialization of others, both black and white; the white fragility and possibilities of allyship that can emerge in the clinical relationship; and Fanon's critique of the role of recognition in the development of subjectivity.

**Presenters:** Steven H. Knoblauch, PhD  
Annie Lee Jones, PhD  
Celia Brickman, PhD  
**Chair:** Celia Brickman, PhD

10:30am-12:15pm

Keynote

FR-09

1.75 Credits

Millennium Hall  
2nd Floor

**Keynote Presentation – Norka T. Malberg, PsyD**

**When Peter Pan Lurks in the Shadows: Development, Psychoanalysis and the Catastrophic Longitudinal Effect of Childism**

Psychoanalysis has its roots in the exploration of early experiences and the listening of the echoes from the past in the context of the here and now. In this context, the developmental perspective is the fundamental and inherently indispensable motor that drives analytic work since its inception. Despite this, psychoanalysis still falls prey to blind spots in the form of adult-centric biases. This presentation explores the longitudinal effects of prejudice against children in society and specifically in the field of psychoanalysis. It explores the value of a more radical developmental approach as understood through the lens of a more inclusive psychoanalysis. This invitation allows a quest towards personal freedom acquired through the experience of a two-person transformative play that is only possible when development is held in mind. Psychoanalysts lose their way when they no longer look and listen for the child. The work becomes an intellectual enterprise without diversity and devoid of genuine mentalizing. When analyst and patient are haunted by the shadow of the dissociated child, they must choose to either put the shadow in the drawer or find their way to Neverland and back. Clinical examples will be presented to illustrate how a contemporary developmental psychoanalytic perspective enriches and widens the scope of practice within and beyond the doors of the consulting room.

**Presenter:** Norka T. Malberg, PsyD  
*(please see bio on page 10; full bio available online)*  
**Chair:** Laurel M. Silber, PsyD

12:15pm–2:00pm

Lunch Break

12:15pm–2:00pm

**Psychoanalysis and Healthcare Committee Board Meeting**

**Commonwealth A-1** 2nd Floor

**Early Career Board Meeting**

**Commonwealth A-2** 2nd Floor

**Section III Board Meeting**

**Adams Room** 3rd Floor

**Section IV Senate Meeting**

**Washington A** 3rd Floor

**Section VIII Board Meeting**

**Washington B** 3rd Floor

**Section IX Board Meeting**

**Washington C** 3rd Floor

**International Relations Committee Board Meeting**

**Parlor P-2** 3rd Floor



2:15pm–4:00pm

Panel

**FR-10**

1.75 Credits

**Commonwealth A-1**  
2nd Floor

Panel

**FR-11**

1.75 Credits

**Commonwealth A-2**  
2nd Floor

Roundtable

**FR-12**

1.75 Credits

**Millennium Hall**  
2nd Floor

Sessions and Presentations

**Psychodynamic Assessments of Urban, Impinged Populations: Linking the Inner Life to Outer Marginalizations**

The present panel reviews an ongoing systematic attempt to link assessments of psychotherapy process to a variety of self-report and projective measures of intrapsychic life in young children. Each study depicts a variety of ways we have compared projective data to self-report data by the child and caregiver(s).

**Presenters:** Kari Gray, PhD  
Laurel Wright, MPH  
Emma Routhier, MA  
**Chair:** M Sasha Rudenstine, PhD  
**Discussant:** Steve Tuber, PhD, ABPP

**Class Dismissed: The Silence of Class in Our Discourse**

Without deeper consideration of how social class resonates through development, our work, and our interactions, is this aspect of identity left silent, prone to continued enactment and loss? This panel endeavors to pursue increased mutual empathy within our field by promoting recognition of class dynamics that have traditionally been muted.

**Presenters:** Sanjay R. Nath, PhD  
Stephen Anen, PhD  
Karen Dias, PsyD  
**Discussant:** Lynne Layton, PhD

**Contradictions in Silence and Speech when #MeToo Gets Close to Psychoanalytic Home**

This roundtable aims to moderate a discussion about the #metoo campaign, both within and outside the field. While psychoanalysis is uniquely positioned to disrupt either/or accusations, it has also had a history of silencing. This roundtable aims to build community around best restorative practices toward accountability and justice.

**Presenters:** Virginia Goldner, PhD  
Lara Sheehi, PsyD  
Ali Shames-Dawson, MA  
Chakira Haddock-Lazala, PhD  
Adrienne Harris, PhD  
Cynthia Chalker, MSS  
Andrea Celenza, PhD

**Chair/Co-Moderator:** Jill Gentile, PhD  
**Moderator:** Katie Gentile, PhD

2:15pm–4:00pm

Sessions and Presentations (continued)

Panel

FR-13

1.75 Credits

Adams Room  
3rd Floor

**Intersectionality and Identity Integration: Reflections of the Personal Journey and Clinical Experiences of Three Generations of Immigrant-Origin Therapists**

Reflecting on their personal experiences and clinical encounters, three generations of immigrant clinicians explore the processes of adaptation and identity development of individuals of immigrant origin. How the therapist's understanding of the similarities, differences, and mutuality of issues between herself/himself and the client inform clinical practice is examined.

**Presenters:** Heejin Kim, PhD  
Duangporn O'Toole, MS, MS  
Nishant Patel, PsyD  
Tanya H. Hess, PhD

**Chair:** Duangporn S. O'Toole, MS, MS

**Discussant:** Spyros D. Orfanos, PhD, ABPP

**Committee on Education and Training Meeting**

Parlor P-2 3rd Floor

Roundtable

FR-14

1.75 Credits

Washington A  
3rd Floor

**Psychoanalysis Around the Globe: China**

In this roundtable, five Chinese and American practitioners discuss massive and pervasive trauma among the Chinese, mark of past and present political violence (i.e., the Cultural Revolution, One Child Policy, etc.). Psychoanalysis holds a great promise in helping the Chinese heal their often unspeakable emotional wounds.

**Presenters:** Elise Snyder, MD  
Robert Gordon, PhD  
Summer Xiubing Wang, MS  
Wendy Cuiqin Wen, MS  
Miranda Sze, PhD

**Chair/Moderator:** Kris Yi, PhD, PsyD

Full Program details online!  
[www.division39springmeeting.com](http://www.division39springmeeting.com)

Panel

FR-15

1.75 Credits

Washington B  
3rd Floor

**The Whiteness Taboo: Three White Psychoanalytic Candidates Interrogate Whiteness in Psychoanalytic Theory, History, Training, and Contemporary Practice**

Three white psychoanalytic candidates interrogate whiteness and its seduction in the field. Using case examples, psychoanalytic theory, personal process, and community dialogue, the presenters offer practical options for practitioners to investigate whiteness in themselves, clinical work, theory, and training institutes. Their training institute's president joins the candidates as discussant.

**Presenters:** Benjamin Ringler, MFT  
Janie Riley, MFT  
Molly Merson, MFT

**Discussant:** Julie Leavitt, MD

Invited Roundtable Panel

FR-16

1.75 Credits

Washington C  
3rd Floor

**Another Look at What Lies Within: Psychoanalytic Reflections on Microaggressions**

"Microaggression" is a term that has entered common usage, but is often misunderstood and misused. As a psychological concept, microaggression taps into unconscious processes resulting in words and actions that harm people. Microaggressions resonate deeply for those who are their targets, frequently resulting in trauma responses. This panel is designed to clarify the terms and concepts of microaggressions in order for us to become more aware of their mechanisms and effects, particularly as we seek to do no harm in the consulting room and beyond.

**Presenters:** Mamta Dadlani, PhD  
Kori Bennett, PsyD  
David Ramirez, PhD, ABPP  
Carnella Gordon-Brown, MSW, LCSW

**Chair:** Leilani Salvo Crane, PsyD

Special Invited Panel

FR-17

1.75 Credits

Howe Room  
33rd Floor

**Psychoanalysis and Buddhism: The Continuing Dialogue. A Tribute to Jeremy Safran**

The dialogue between Buddhism and Psychoanalysis that Jeremy Safran helped initiate has only continued to grow. More and more analysts have themselves begun to practice meditation, with increased appreciation for the relevance of spirituality to clinical work. At the same time, our analytic perspective appears critical in understanding the persistent, dissociated blind spots that remain despite seemingly profound and transformative spiritual experiences, manifesting in repeated power abuses in Buddhist communities. We will revisit this dialogue, attempting to bring it up to date, and to pay special attention to Jeremy Safran's contributions to understanding therapeutic change across different modalities.

**Presenters:** Barry Magid, MD  
Polly Young-Eiendrath, PhD  
Pilar Jennings, PhD

**Chair:** Barry Magid, MD

2:15pm–4:00pm

Sessions and Presentations (continued)

Demonstration

FR-18

1.75 Credits

Lescaze Room  
33rd Floor

**Supervision Demo: Graduate Student Committee – The Dynamics of the Supervisory Relationship: A Live Demonstration**

This interactive presentation will include a live supervisory experience in which a graduate student will present a case to a senior clinician. A junior and senior discussant will offer their perspectives on the clinical material before opening the floor to the audience to provide input for the supervisee.

**Supervisor:** Nancy McWilliams, PhD, ABPP  
**Case Presenter:** Karla Lizette Gomez, BA  
**Moderator:** Anna Maria Baldauf, PsyD  
**Discussants:** Scott Pytluk, PhD, ABPP  
Amauri Rodriguez Zamores, BA

4:00pm–4:30pm

Break Millennium Foyer 2nd Floor

4:30pm–5:30pm

Sessions and Presentations

Paper Discussion

FR-19

1 Credit

Commonwealth A-1  
2nd Floor

**What is Mentalized Affectivity and How is it Useful Clinically?**

A psychoanalytically-informed view of emotion regulation and its clinical relevance.

**Presenters:** Elliot Jurist, PhD, PhD  
David Greenberg, PhD

Keynote  
Conversation

Commonwealth A-2  
2nd Floor

**Conversation with Norka T. Malberg for Graduate Students, Candidates and Early Career Professionals**

**Presenter:** Norka T. Malberg, PsyD  
*(please see bio on page 10; full bio available online)*

Meet the Author

Adams Room  
3rd Floor

**Homosexuality, Transsexuality, Psychoanalysis and Traditional Judaism**

The book highlights psychoanalytic, rabbinic, feminist and queer voices, from Interpersonal and Relational perspectives, in addressing sex and gender in the Orthodox Jewish community. The book focuses on the challenges faced by LGBTQ members of the Orthodox Jewish world and the clinicians and rabbis who work with them.

**Presenter:** Alan Slomowitz, PhD

Meet the Author

Parlor P-2  
3rd Floor

**Psychoanalysis and Contemporary American Men: Gender Identity in a time of Uncertainty**

Critics contend there are no patients and therapists as such, but individuals marked by their race, class, gender, etc. I consider the clinical implications of theorizing patient and therapist as men. Criticizing a stereotype of phallicism underpinning psychoanalysis, I offer an alternative construct of manhood and explore its clinical implications.

**Presenter:** Steven Seidman, PhD

Paper Discussion

FR-20

1 Credit

Washington A  
3rd Floor

**The Otherness of Fat: An Enactment of Epic Proportions**

Visible difference typically indicates lesser status. Being fat evokes such an objectionable sense of dread, that it is almost always excluded from consideration with other social disabilities. Thus, when both analyst and patient are “fat” and “female,” intersectional conditions are ripe for an enactment of epic proportions.

**Presenter:** Hilary Offman, MD

Paper Discussion

FR-21

1 Credit

Washington B  
3rd Floor

**On Moral Resonance and its Absent-Presence in Psychoanalysis: Can We Cultivate Our Voices On A Dangerous Topic?**

The absent-presence of morality haunts psychoanalysts in our consulting rooms and beyond. Is psychoanalysis—by tradition a wonderfully subversive troublemaker with radical roots in sex, aggression, and that which feels too frightening for words—evading a topic too dangerous to discuss? How can we find our voices on morality?

**Presenters:** Margery Kalb, PsyD  
Joyce Slochower, PhD, ABPP

Paper Discussion

FR-22

1 Credit

Washington C  
3rd Floor

**Voices We’d Rather Not Hear: Finding Racist States of Mind Where You Least Expect**

This interactive presentation will use clinical excerpts (from therapy with children and people of color) to discuss ideas that will aid the audience in identifying the racist dynamics embedded even in the affectionate and benevolent attitudes of clinicians, individuals and groups, in and outside of the consulting room.

**Presenter:** Joseph S. Reynoso, PhD

Full Program details online!  
[www.division39springmeeting.com](http://www.division39springmeeting.com)

4:30pm–5:30pm

Sessions and Presentations (continued)

Meet The Author

Howe Room  
33rd Floor

**Celebrating the Wounded Healer Psychotherapist: Pain, Post-Traumatic Growth and Self-Disclosure**

Carl Jung created the archetype of the wounded healer. He believed the wounded healer's suffering is both a burden and a compelling force in his need to heal the problems of others. Sometimes the wounded healer becomes a wounding healer; Freud was the prototype. Chapters by wounded healers are included.

**Presenter:** Sharon K. Farber, PhD

Meet The Author

Lescaze Room  
33rd Floor

**Relationships in Development: Infancy, Intersubjectivity and Attachment**

The clinical insights of "relational-developmental psychoanalysis" integrate the immediacy of today's "intersubjective baby" (attachment, infant interaction research, neuroscience and trauma), with "classical babies:" (Freud's, Klein's, Winnicott's). Analogies between infant-parent and psychotherapeutic dyads vitalize how we see clinical movement, emotion and the body.

**Presenter:** Stephen Seligman, DMH

6:00pm–7:30pm

**Section VIII Reception and Conversation Hour**  
Whiskey and Rye 1st Floor

6:00pm–7:30pm

**President's Reception for Graduate Students, Candidates and Early Career Professionals**  
The Terrace 33rd Floor



8:00am–9:00am

Editorial Board Meeting Lescaze Room 33rd Floor

8:30am–10:15am

Sessions and Presentations

Roundtable

SA-01  
1.75 Credits

Commonwealth A-1  
2nd Floor

**Asserting the Hidden: Working Through Palestinian Identity**

In parallel to the unspoken in clinical work, some narratives and voices in political discourse are, by design, hidden, marginalized, and unattended to. This roundtable will explore ways to cultivate a working through of hidden Palestinian voices with the intent of keeping them resonant clinically and psychoanalytically.

**Presenters:** Helena Vissing, PsyD  
Selma Zaki, EdM  
Nadine Obeid, PhD

**Chair:** Lara Sheehi, PsyD

**Moderator:** Lynne Layton, PhD

Panel

SA-02  
1.75 Credits

Commonwealth A-2  
2nd Floor

**The Stonewall Fiftieth Anniversary Panel – The Resonance of Riots: Psychoanalytic Celebrations of Queer Humor**

This panel will honor the fiftieth anniversary of the Stonewall riots in 1969. Panelists represent resonant, diverse queer voices who will be retrospective and prospective in honoring this historic milestone. The panelists will address the theme of humor as a special feature of LBGTQ resistance to oppression.

**Presenters:** Malin Fors, MSc  
Kori Bennett, PsyD

**Moderator/Discussant:** Dennis Debiak, PsyD

Panel

SA-03  
1.75 Credits

Commonwealth B  
2nd Floor

**Suicidality as Connection: The Tension between Disappearing and Being Recognized**

This clinically-focused panel explores issues of longing, connection, and community raised by suicidality in three distinctive populations: adults who are childhood trauma survivors, youth in Japan considering group suicide, and emergent adults in the US. The desire for recognition is examined via presentation of these diverse voices.

**Presenters:** Julia Mayer, PsyD  
Ai Ikunaga, PsyD  
Sanjay R. Nath, PhD

**Discussant:** Jane Tillman, PhD

8:30am–10:15am

Sessions and Presentations (continued)

Invited  
Roundtable Panel

**SA-04**  
1.75 Credits

**Commonwealth C**  
2nd Floor

**Ethical Distances: The Double-Edged Uses of Sameness and Difference**

Working from a round robin type approach—with story telling, theoretical musings, and clinical struggles—the panelists consider the manners and means by which we create ethical distances from one another. This critical topic is explored via the following guiding questions: “How is sameness used to mute one’s sense of responsibility for one’s neighbor?” “How is difference used toward the same end?” Explored from various disciplinary angles and dimensions represented by the panelists, the implications of such distancing for the clinic and broader societal trends are considered. After the panelists engage with one another, the format opens for audience engagement.

**Presenters:** Ann Pellegrini, PhD  
Mark Freeman, PhD  
Donna Orange, PhD, PsyD  
Adrienne Harris, PhD  
David Goodman, PhD

Collaborative Panel

**SA-05**  
1.75 Credits

**Commonwealth D**  
2nd Floor

**In collaboration with the Graduate Student Committee: Clinical Vignettes: Am I Recognizing All Voices of Intersectionality?**

This panel seeks to examine intersectionality within and across case presentations from a group of diverse graduate students who are each working with patients experiencing disintegration in their sense of identity. A senior discussant will facilitate a dialogue in order to identify resonant voices brought into these sessions.

**Presenters:** Ashland Thompson, MA  
Laura Captari, MA, MS  
Luis Ramirez, MSW, LCSW  
Alicia A. MacDougall, BA  
Jabeen Shamji, MA

**Chair/Moderator:** Anna Maria Baldauf, PsyD  
**Discussant:** Carnella Gordon-Brown, MSW, LCSW

Panel

**SA-06**  
1.75 Credits

**Adams Room**  
3rd Floor

**Sameness, Difference and Mutuality: The Centrality of the Developmental Lens in Adult and Child Treatment**

This panel will begin with a brief introduction highlighting the components of a “developmental lens” that allows for a longitudinal within a person approach that uniquely draws upon and integrates interdisciplinary research studies and subjective experiences of relatedness. The role of a developmental perspective within the two clinical cases.

**Presenters:** Norka T. Malberg, PsyD  
Johanna Malone, PhD

Roundtable

**SA-07**  
1.75 Credits

**Washington A**  
3rd Floor

**Where Does Mutuality Lie? Navigating Clinician Self-Disclosure Across Difference and Sameness in Race, Gender, and Sexuality**

What voices are resonant or dissonant in moments of self-disclosure? What identities and experiences are assumed at first glance, and what remains hidden unless disclosed? This roundtable of early-career clinicians of color complicates psychoanalytic notions of sameness and difference in clinical work by exploring clinical and political implications of self-disclosure.

**Presenters:** Tara Bredesen, MSW  
Brianna Suslovic, MSW  
Jixia Ao, MSW  
Mamta Dadlani, PhD

Research Award  
Presentation

**SA-08**  
1.75 Credits

**Washington B**  
3rd Floor

**The Process of Studying Outcome and the Outcome of Studying Process: My Journey as a Psychotherapy Researcher**

**Presenters:** Jaques P. Barber, PhD, ABPP  
Elliot Jurist, PhD, PhD

Panel

**SA-09**  
1.75 Credits

**Washington C**  
3rd Floor

**What Are Relational Analysts Thinking?**

The mind of each Relational analyst carries a legacy of psychoanalytic theories that patterns what is offered to the patient. Through extensive clinical vignettes, our papers bring to life what three relational analysts are thinking or, more accurately, what comes to mind that shapes a healing and transformational process.

**Presenters:** Jack Foehl, PhD  
Stuart Pizer, PhD, ABPP  
**Discussant:** Hazel Ipp, PhD

9:00am–4:00pm

**ABAPsa Board** **Howe Room** 33rd Floor

9:00am–10:00am

**Publications Committee** **Lescaze Room** 33rd Floor

Full Program details online!  
[www.division39springmeeting.com](http://www.division39springmeeting.com)

<p><b>10:30am-12:15pm</b></p>	<p><b>Keynote Plenary</b></p>	<p><b>12:15pm-2:00pm</b></p>	<p><b>Ethics Committee Board</b> Commonwealth A-2 2nd Floor</p>
<p><b>Panel</b> <b>SA-10</b> 1.75 Credits <b>Millennium Hall</b> 2nd Floor</p>	<p><b>Recognizing the Other in the Face/Place of Social Injustice: Reconsidering Responsibility</b></p> <p>Recognition of the other, as Benjamin has established, is an achievement—a form of mutual relatedness that continually slips away, which we work to restore. Central to the repair of ruptures is acknowledgment, including acknowledgment of how I have failed to see something essential about your experience, about who you are, about how I am affecting you. Here, our panelists speak to different facets of this challenge, in which our dyadic relationships are both infused with the social contexts in which we are embedded, and in which we are called to move beyond consideration of the dyad alone. White, in revisiting her landmark paper, “Surviving hating and being hated,” challenges us to talk together frankly about the hatred that racism engenders—including what it is to be the object of hatred, to hate the self, to hate the other. She speaks to the need to name and talk about such experiences of hatred, so that we may begin to demystify it and work toward lessening its devastating effects. Benjamin, for whom recognition of the Other is always understood within social contexts of domination and oppression, engages here with James Baldwin’s <i>The fire next time</i>, and asks, what mix of pain and insight comes with encountering this prophetic voice, his scathing yet compassionate critique of oppression? Finally, González challenges us to go beyond the dyad, and in looking outward, to look within: evoking the ethic of psychoanalysis, the acknowledgement of unconscious forces as primary motivators, he asserts the need for us to interrogate how such forces influence psychoanalytic training in regard to developing or failing to develop our capacities to recognize “the other.” This would lead us, he concludes, to re-envisioning training by placing community and social psychoanalysis at its core, a project which can invigorate our field even as we are called to redefine it.</p> <p><b>Presenters:</b> Jessica Benjamin, PhD Francisco González, PhD Kathleen Pogue White, PhD</p> <p><b>Panel Convener:</b> Rachel Kabasakalian McKay, PhD <b>Moderator:</b> Melanie Suchet, PhD <i>(please see bios on pages 11–12; full bios are available online)</i></p>	<p><b>12:30pm-2:00pm</b> <b>Commonwealth D</b> 2nd Floor</p> <p><b>2:15pm-4:00pm</b></p>	<p><b>Scholars Board</b> Commonwealth B 2nd Floor</p> <p><b>Section I Board Meeting</b> Commonwealth C 2nd Floor</p> <p><b>Section IV Open Meeting</b> Adams Room 3rd Floor</p> <p><b>Section V Board Meeting</b> Washington A 3rd Floor</p> <p><b>Committee on Sexualities and Gender Identities Board Meeting</b> Washington B 3rd Floor</p> <p><b>Section II Board Meeting</b> Washington C 3rd Floor</p> <p><b>Awards Committee Board</b> Lescaze Room 33rd Floor</p>
<p><b>12:15pm-2:00pm</b></p>	<p><b>Lunch Break</b></p>	<p><b>Continuing the Conversation – Recognizing the Other in the Face/Place of Social Injustice: Reconsidering Responsibility</b></p> <p>All are welcome; Graduate Students, Early Career Professionals, and Candidates are especially encouraged to participate in this post-plenary discussion with the speakers. <b>Feel free to bring your lunch.</b></p> <p><b>Jessica Benjamin, PhD</b> <b>Francisco J. Gonzalez, MD</b> <b>Kathleen Pogue White, PhD</b></p> <p><b>Panel Convener:</b> Rachel Kabasakalian McKay, PhD <b>Moderator:</b> Melanie Suchet, PhD <i>(please see bios on pages 11–12; full bios are available online)</i></p>	<p><b>Section II Board Meeting</b> Washington C 3rd Floor</p> <p><b>Awards Committee Board</b> Lescaze Room 33rd Floor</p>
<p><b>12:15pm-2:00pm</b></p>	<p><b>Multicultural Concerns Committee</b> Commonwealth A-1 2nd Floor</p>	<p><b>Roundtable</b> <b>SA-11</b> 1.75 Credits <b>Commonwealth A-1</b> 2nd Floor</p>	<p><b>Sessions and Presentations</b></p> <p><b>Mixed Race Children, Mixed Race Families: Psychoanalytic Explorations of Sameness and Difference</b></p> <p>This roundtable of multiracial clinicians will explore the experiences of mixed race children and families through clinical process, forensic case studies, and media. We aim to make space for the resonant voices of multiracial psychoanalytic clinicians, and to provide an expansive space for discussion that explores sameness, difference, and mutuality.</p> <p><b>Presenters:</b> Carter J. Carter, MSW Leilani Salvo Crane, PsyD Mary Kim Brewster, PhD <b>Moderator:</b> Hilary Hla, PsyD</p>

2:15pm–4:00pm

Sessions and Presentations (continued)

Panel

SA-12

1.75 Credits

Commonwealth A-2  
2nd Floor

**Analysts Face the Aging Process**

Aging inevitably emerges, over time, as an ineluctable experience for patients and analysts alike. Aging remains a daunting and relatively unexplored frontier in psychoanalysis—clinically, personally, and in analytic theorizing. This panel sheds light on this dark existential edge, applying theoretical, clinical, and intimately personal perspectives on the aging process.

**Presenters:** Joyce Slochower, PhD, ABPP  
Stuart Pizer, PhD, ABPP  
Barbara Pizer, EdD, ABPP

Panel

SA-13

1.75 Credits

Commonwealth B  
2nd Floor

**Unconscious Fantasies of Sameness and Difference in Politically Motivated Groups**

Using a computerized text analysis of Ku Klux Klan online communications, a clinical psychologist explores the psychological processes underlying ideological extremism. In the second paper, a cultural historian and Arab scholar views Islamophobia through a psychoanalytic lens, exploring the role that white supremacy has played in its rise.

**Presenters:** Shuki Cohen, PhD  
Stephen Sheehi, PhD  
**Chair:** Ghislaine Boulanger, PhD  
**Discussant:** Usha Tummala-Narra, PhD

Invited Panel

SA-14

1.75 Credits

Commonwealth C  
2nd Floor

**Shame and Possibility: The Limits and Potential of Male Sexuality in the Era of #MeToo**

Freud famously noted that unlike adult male sexuality, the sexual life of women is a “dark continent” for psychology. This panel will challenge the myth of this gendered, split binary, via an exploration of the also sometimes enigmatic sexual life of adult men. We will focus on sexuality’s potential as a vehicle for expressing aggression, vulnerability and revenge, self-expression vs. inhibition, regulation vs. dysregulation, self-esteem vs. shame, and in the treatment room; a diagnostic tool and possible component of the therapeutic action. These dynamics will be examined within the context of socio-culturally-imposed limitations on what it means to be a man, especially in the era of “me-too.”

**Presenters:** Robert Grossmark, PhD  
Galif Atlas, PhD  
Steven Kuchuck, DSW  
**Chair:** Steven Kuchuck, DSW

Panel

SA-15

1.75 Credits

Commonwealth D  
2nd Floor

**Welcoming the Silent, the Sequestered, the Slighted: Cultivating Space for Resonance, Dissonance, and Mutuality in a Time of Global Sociopolitical Trauma and Unrest**

Two analysts of different cultural backgrounds will present clinical cases illustrating ways in which therapists, patients, and therapeutic dyads are impacted by historical and current sociopolitical unrest, war, and cultural trauma. Each will discuss sources that inspire and sustain space for sameness, difference, and mutuality. Audience engagement will follow discussant.

**Presenters:** Theresa Clement Tisdale, PhD, PsyD  
Marie Hoffman, PhD  
**Chair:** Laura Captari, MS, MA  
**Discussant:** Lowell Hoffman, PhD

Discussion Group #3

Adams Room  
3rd Floor

**Treatment of a 17-year-old Trans Girl: Clinical Discussion Group Focusing on Child and Adolescent Work**

Dr. Fink will present clinical material from treatment of a 17-year-old trans girl. Dr. Saketopoulou will lead discussion of the case from a variety of theoretical vantage points, with audience participation and discussion to follow.

**Presenter:** Sophie Fink, PsyD  
**Moderators:** Seth Aronson, PsyD  
Virginia Shiller, PhD  
**Discussant:** Avgi Saketopoulou, PsyD

Panel

SA-16

1.75 Credits

Washington A  
3rd Floor

**History, Racism, and African American Silences**

The panel/conversation will explore historical roots of and clinical implications for certain silences of African Americans, both inside and outside the psychotherapy consulting room. Two presenters will offer observations from Black history, research about child development, and clinical vignettes with African American adults to explore this phenomenon.

**Presenters:** Dasefa Gray, MEd  
Ruth Fallenbaum, PhD

Panel

SA-17

1.75 Credits

Washington B  
3rd Floor

**Apart Together: An In-Depth Conversation on Healing Cultural Trauma**

Three psychologists sharing the experiences of how conversations about their struggles with being “Chinese” unlocked past cultural traumas and brought identity acceptance through mutual recognition and articulation of previously unrepresented cultural experiences. Relational theories are applied to examine and understand this process, followed by clinical implications.

**Presenters:** Yaguang (Grace) Yan, PsyD  
Flora Chan, PsyD  
Christine Wai, PsyD  
**Chair/Moderator:** Lani Chow, PhD



2:15pm–4:00pm

Sessions and Presentations (continued)

Panel

SA-18

1.75 Credits  
Washington C  
3rd Floor

**“He Just Makes Theory Out Of His Own Sickness:”  
Disguised Autobiography as Clinical Case Study**

It is our contention that many notable contributions to psychoanalytic theory are the result of our forbearers’ own analyses and self-analyses. Though not a comprehensive survey, we begin with Sigmund Freud’s discovery of screen memories through his self-analysis and discuss other examples and their impact on psychoanalysis.

**Presenters:** Chaim Bromberg, PhD  
Lewis Aron, PhD, ABPP  
**Discussant:** Adrienne Harris, PhD

4:00pm–4:30pm

**Break Millennium Foyer 2nd Floor**

4:15pm–5:30pm

**Town Hall**

Washington C  
3rd Floor

This year’s Town Hall meeting will be a follow-up/continuation of the dialogues begun at last year’s conference in New Orleans. Last year’s Town Hall was attended by a diverse group of conference attendees. Those least in representation were older members of the division. The discussion focused on numerous panels presented, particularly ones in which hostility was directed at the presenters due to the subject matter. The group also discussed issues of race, gender, sexuality and their intersection. Participants discussed generational divides that exist in the division and what some felt were schisms that occurred. It was a productive and respectful discussion. As such, it was decided to hold a second Town Hall in Philadelphia. We hope more people will choose to attend in order to explore the growth and changes resulting from the increased presence of racial, gender and sexual minorities, as well as the increasing age differences in the Society. The conversation will be lively, respectful and be an important component of the conference.

**Moderator:** Shara Sand, PsyD

4:30pm–5:30pm

Sessions and Presentations

Paper Discussion

SA-19

1 Credit  
Commonwealth A-1  
2nd Floor

**Your Heart and My Heart are Old Friends**

This paper illustrates complex dynamics in an analytic treatment between a White analyst and an African American patient in which both share resonant familial experiences in the face of racial differences and experiences.

**Presenter:** Rhona Kaplan, MSW

Paper Discussion

SA-20

1 Credit  
Commonwealth A-2  
2nd Floor

**Clinical Arpeggios: Disambiguating Power,  
Professionalism, and Bodies**

When an older white female supervisor advises a younger white female supervisee on “appropriate professional attire” a series of conversations about what is “appropriate professional attire,” who owns women’s bodies, power, authority, and the supervisory relationship become part of a conversation which is explored from each one’s perspective.

**Presenters:** Sarah L. Hedlund, PhD  
helen DeVinney, PsyD

Meet The Author

Commonwealth B  
2nd Floor

**Psychodynamic Perspectives On Asylum Seekers  
And The Asylum Seeking Process: Encountering  
Well Founded Fear**

Book begins by describing the psychosocial assessment of asylum seekers from three perspective: forensic, psychodynamic, and political and then attempts to understand, from a psychodynamic points of view, differences in the motivation of three groups of asylum seekers: “heroic” seekers, women who endured FGM, and women fleeing feminicide in Central America.

**Presenter:** Barbara K. Eisold, PhD  
**Moderator:** Spyros D. Orfanos, PhD, ABPP

Meet The Author

Commonwealth C  
2nd Floor

**The Critique of Regression: A Psychoanalytic Model  
of Irreversible Lifespan Development**

Gregory Rizzolo demonstrates that where we think we see regressions to past stages of the lifespan, we in fact find the emergence of novel structures in experience. The implication is that when we revisit the past, in private or in dialogue, we remake it afresh in light of the present. The analysis of the past is always, in this sense, an exploration of the present.

**Presenter:** Gregory Rizzolo, PhD

Meet The Author

Commonwealth D  
2nd Floor

**Race in Psychoanalysis: Aboriginal Populations in  
the Mind**

Race in Psychoanalysis analyzes the often-unrecognized racism in psychoanalysis by examining how the colonialist discourse of late nineteenth-century anthropology made its way into Freud’s foundational texts, where it has remained and continues to exert a hidden influence.

**Presenter:** Celia Brickman, PhD

4:30pm-5:30pm

Sessions and Presentations (continued)

Meet The Author

Adams Room  
3rd Floor

**Psychoanalysis in the Barrios: Race, Class and the Unconscious**

“Psychoanalysis in the Barrios: Race, Class and the Unconscious” explores the unconscious realm that underpins crucial symptomatic behavior among Latinos affected by poverty; captures the complexities introduced by differences of culture, class, gender, language, ethnicity, and race; and defines an ethical position with liberatory and emancipatory potential.

**Presenters:** Patricia Gherovici, PhD  
Christopher Christian, PhD

Paper Discussion

SA-21

1 Credit

Washington A  
3rd Floor

**Liberating Native Language Use through Hypnosis**

A project using hypnosis to assist in bringing forth native language skills in two women traumatized in childhood, one Passamaquoddy, and one Filipino, will be described and discussed (including a participatory demonstration of the hypnotic method). Creative discoveries made during this project assisted in integration, including the liberation of language.

**Presenter:** Elizabeth S. R. Goldstein, PhD

Paper Discussion

SA-22

1 Credit

Washington B  
3rd Floor

**The Stephen Mitchell Award: Towards a Tender Sexuality. From Freud’s Implicit Taboo on Adult Erotic Tenderness, to the Unexplored Tender Critical Potential of Mitchell and Freud’s Clinical Practice**

Stephanie Koziej, the recipient of the 2019 Steven Mitchell Award, explores Freudian texts in which the split between tenderness and sensuality is positioned at the core of “civilized” and “healthy” “adult” sexuality. The author addresses an unexplored critical potential by returning to the sex, gender and racial assumptions of Freud’s tender-sensual split; and she critiques the implicit imperative that healthy civilized adult sexuality requires the repression of tenderness.

**Presenter:** Stephanie Koziej  
**Chair:** Elliot Jurist, PhD, PhD

5:30pm-6:30pm

**Section V Authors Conversation Hour**

**Whiskey and Rye** 1st Floor

6:00pm-7:30pm

**Joint Reception Co-Sponsored by Section IX and the Committees on Early Career Professionals, International Relations, Multicultural Concerns and Sexualities and Gender Identities** **Lescaze Room** 33rd Floor

6:00pm-7:30pm

**Presidential Conversation Hour and Reception: An Open Conversation on Psychoanalytic Training (Section 1 and the Candidate Committee)**  
**Howe Room** 33rd Floor

LIST OF PRESENTERS

A

- Ricardo C. Ainslie, PhD** \_\_\_\_\_ 19  
University of Texas, Austin, TX
- Judie Alpert, PhD** \_\_\_\_\_ 29  
NYU Postdoctoral Program in Psychotherapy and Psychoanalysis, New York, NY
- Stephen Anen, PhD** \_\_\_\_\_ 33  
New Orleans-Birmingham Psychoanalytic Center, New Orleans, LA
- Jixia Ao, MSW** \_\_\_\_\_ 41  
YouthCare, Seattle, WA
- Lewis Aron, PhD, ABPP** \_\_\_\_\_ 13,15,46  
NYU Postdoctoral Program in Psychotherapy and Psychoanalysis, New York, NY
- Seth Aronson, PsyD** \_\_\_\_\_ 14,19,45  
William Alanson White Institute, New York, NY
- Galif Atlas, PhD** \_\_\_\_\_ 44  
NYU Postdoctoral Program in Psychotherapy and Psychoanalysis, New York, NY
- Steven D. Axelrod, PhD** \_\_\_\_\_ 29  
NYU Postdoctoral Program in Psychotherapy and Psychoanalysis, New York, NY

B

- Anna Maria Baldauf, PsyD** \_\_\_\_\_ 36,40  
Tufts University, Somerville, MA
- Jaques P. Barber, PhD, ABPP** \_\_\_\_\_ 20,22,41  
Derner School of Psychology, Adelphi University, Garden City, NY
- Roy Barsness, PhD** \_\_\_\_\_ 29  
The Seattle School, Seattle, WA
- Tony Bass, PhD** \_\_\_\_\_ 29  
Independent Practice, New York, NY
- Jessica Benjamin, PhD** \_\_\_\_\_ 11,42,43  
NYU Postdoctoral Program in Psychotherapy and Psychoanalysis, New York, NY
- Kori Bennett, PsyD** \_\_\_\_\_ 28,35,39  
Columbia University, New York, NY
- Joan Berzoff, MSW, EdD** \_\_\_\_\_ 18  
Smith College School for Social Work, Northhampton, MA
- Robert F. Bornstein, PhD** \_\_\_\_\_ 28  
Adelphi University, Derner Institute, Garden City, NY

- Marjorie W. Bosk, PhD, ABPP** \_\_\_\_\_ 14  
Institute of Relational Psychoanalysis of Philadelphia, Philadelphia, PA
- Ghislaine Boulanger, PhD** \_\_\_\_\_ 17,44  
NYU Postdoctoral Program in Psychotherapy and Psychoanalysis, New York, NY
- William Braun, PsyD** \_\_\_\_\_ 13  
New York Psychoanalytic Society & Institute, New York, NY
- Tara Bredesen, MSW** \_\_\_\_\_ 41  
Smith School for Social Work, Northampton, MA
- Sara K. Bressi PhD, LSW** \_\_\_\_\_ 14,17  
Bryn Mawr College, Bryn Mawr, PA
- Mary Kim Brewster, PhD** \_\_\_\_\_ 43  
Ackerman Institute for the Family, New York, NY
- Celia Brickman, PhD** \_\_\_\_\_ 31,47  
Center for Religion & Psychotherapy of Chicago, Chicago, IL
- Chaim Bromberg, PhD** \_\_\_\_\_ 46  
Manhattan Institute for Psychoanalysis, New York, NY
- Doris Brothers, PhD** \_\_\_\_\_ 16  
Training and Research in Intersubjective Self Psychology, New York, NY
- Brian Brown, PsyD** \_\_\_\_\_ 15,28  
The Chicago Psychoanalytic Institute, Chicago, IL

C

- Laura Captari, MA, MS** \_\_\_\_\_ 40,45  
University of North Texas, Denton, TX
- Carter J. Carter, MSW** \_\_\_\_\_ 43  
Smith College School for Social Work, Northampton, MA
- Andrea Celenza, PhD** \_\_\_\_\_ 33  
Boston Psychoanalytic Society and Institute, Boston, MA
- Cynthia Chalker, MSS** \_\_\_\_\_ 33  
Manhattan Institute for Psychoanalysis, New York, NY
- Flora Chan, PsyD** \_\_\_\_\_ 45  
Richmond Area Multi-Services Inc., San Francisco, CA
- Marilyn Charles, PhD, ABPP** \_\_\_\_\_ 15,16  
Austen Riggs Center, Stockbridge, MA
- Soo Hyun Cho** \_\_\_\_\_ 19  
Long Island University, Brooklyn, NY

# LIST OF PRESENTERS (CONTINUED)

**Lani Chow, PhD** \_\_\_\_\_ 18,45  
California Institute of Integral Studies,  
San Francisco, CA

**Christopher Christian, PhD, ABPP** \_\_\_\_\_ 19,48  
City College NY, New York, NY

**Elizabeth A. Clark, PsyD** \_\_\_\_\_ 18,28  
Fordham University, New York, NY

**Theresa Clement Tisdale, PhD, PsyD** \_\_\_\_\_ 28,45  
Azusa Pacific University, Department of  
Clinical Psychology, Azusa, CA

**Shuki Cohen, PhD** \_\_\_\_\_ 44  
John Jay College, New York, NY

## D

**Mamta Dadlani, PhD** \_\_\_\_\_ 28,35,41  
Private Practice, Berkeley, CA

**Jaine L. Darwin, PhD, ABPP** \_\_\_\_\_ 18  
Harvard Medical School, Boston, MA

**Barry Dauphin, PhD, ABPP** \_\_\_\_\_ 20  
University of Detroit-Mercy, Detroit, MI

**Dennis Debiak, PsyD** \_\_\_\_\_ 29,39  
Institute for Relational Psychoanalysis,  
Philadelphia, PA

**helen DeVinney, PsyD** \_\_\_\_\_ 47  
The George Washington University,  
Washington, DC

**Karen Dias, PsyD** \_\_\_\_\_ 33  
University of California Santa Barbara,  
Santa Barbara, CA

**David L. Downing, PsyD, ABPP** \_\_\_\_\_ 16,28  
Los Angeles Institute and Society for  
Psychoanalytic Studies, Los Angeles, CA

**Jordan J. Dunn, MA** \_\_\_\_\_ 17  
New School for Social Research, New York, NY

## E

**Barbara K. Eisold, PhD** \_\_\_\_\_ 47  
Cardozo School of Law, New York, NY

**Eve Ensler** \_\_\_\_\_ 9,20  
Playwright & Author, New York, NY

**Catherine F. Eubanks, PhD** \_\_\_\_\_ 19  
Yeshiva University, Bronx, NY

## F

**Ruth Fallenbaum, PhD** \_\_\_\_\_ 45  
Private Practice, Berkeley, CA

**Sharon K. Farber, PhD** \_\_\_\_\_ 38  
NYU School of Social Work, New York, NY

**Kenneth Feiner, PsyD** \_\_\_\_\_ 20  
Private Practice, New York, NY

**Sophie Fink, PsyD** \_\_\_\_\_ 45  
Private Practice, Philadelphia, PA

**Jack Foehl, PhD** \_\_\_\_\_ 41  
Boston Psychoanalytic Society & Institute,  
Brookline, MA

**Malin Fors, MSc** \_\_\_\_\_ 17,39  
Finnmark Hospital Trust, Hammerfest, Norway

**Jennifer Fox** \_\_\_\_\_ 9,20  
Filmmaker & Director, Narberth, PA

**Mark Freeman, PhD** \_\_\_\_\_ 40  
College of the Holy Cross, Worcester, MA

## G

**LaToya Gaines** \_\_\_\_\_ 17  
Fordham University, New York, NY

**Richard B. Gartner, PhD** \_\_\_\_\_ 16  
William Alanson White Institute, New York, NY

**Daniel Gaztambide, PsyD** \_\_\_\_\_ 19  
New School for Social Research, New York, NY

**Jill Gentile, PhD** \_\_\_\_\_ 20,33  
NYU Postdoctoral Program in Psychotherapy  
and Psychoanalysis, New York, NY

**Katie Gentile, PhD** \_\_\_\_\_ 17,33  
John Jay College, CUNY, New York, NY

**Patricia Gherovici, PhD** \_\_\_\_\_ 19,48  
Philadelphia Lacan Group, Philadelphia, PA

**Carol Gilligan, PhD** \_\_\_\_\_ 28  
New York University, New York, NY

**Virginia Goldner, PhD** \_\_\_\_\_ 33  
Stephen A. Mitchell Center for Relational  
Psychoanalysis, New York, NY

**Elizabeth S. R. Goldstein, PhD** \_\_\_\_\_ 48  
Mansfield Psychotherapy Associates, Burlington, VT

**Karla Lizette Gomez, BA** \_\_\_\_\_ 36  
University of Monterrey, Monterrey, Mexico

**Francisco González, PhD** \_\_\_\_\_ 11,42,43  
Psychoanalytic Institute of Northern  
California, San Francisco, CA

**David Goodman, PhD** \_\_\_\_\_ 40  
Boston College, Boston, MA

**Susan Goodman, LCSW** \_\_\_\_\_ 14  
New York University, New York, NY

**Camella Gordon-Brown, MSW, LCSW** \_\_\_\_\_ 35,40  
Reflective Spaces, Material Places,  
San Francisco, CA

**William H. Gottdiener, PhD** \_\_\_\_\_ 28  
John Jay College of Criminal Justice – The City  
University of New York, New York, NY

**Jacqueline Gotthold, PsyD** \_\_\_\_\_ 14  
Institute for Psychoanalytic Study of  
Subjectivity, New York, NY

**Robert Gordon, PhD** \_\_\_\_\_ 34  
Independent Practice, Allentown, PA

**Sue Grand, PhD** \_\_\_\_\_ 13  
NYU Postdoctoral Program in Psychotherapy  
and Psychoanalysis, New York, NY

**Dasefa Gray, MEd** \_\_\_\_\_ 45  
Harlem Family Institute, New York, NY

**Kari Gray, PhD** \_\_\_\_\_ 33  
City College of New York, New York, NY

**David Greenberg, PhD** \_\_\_\_\_ 36  
Cambridge, Cambridge, United Kingdom

**Robert Grossmark, PhD** \_\_\_\_\_ 44  
NYU Postdoctoral Program in Psychotherapy  
and Psychoanalysis, New York, NY

## H

**Chakira Haddock-Lazala, PhD** \_\_\_\_\_ 33  
Harlem Family Institute, New York, NY

**Nakia M. Hamlett, PhD** \_\_\_\_\_ 17  
Yale School of Medicine, New Haven, CT

**Amira Hanna** \_\_\_\_\_ 19  
Long Island University, Brooklyn, NY

**Adrienne Harris, PhD** \_\_\_\_\_ 33,40,46  
NYU Postdoctoral Program in Psychotherapy  
and Psychoanalysis, New York, NY

**Sarah L. Hedlund, PhD** \_\_\_\_\_ 47  
The George Washington University, Washington, DC

**Tanya H. Hess, PhD** \_\_\_\_\_ 15,34  
VA Medical Center, University of Pennsylvania,  
Philadelphia, PA

**Hilary Hla, PsyD** \_\_\_\_\_ 43  
Swarthmore College, Swarthmore, PA

**Lowell Hoffman, PhD** \_\_\_\_\_ 45  
Brookhaven Institute, Fogelsville, PA

**Marie Hoffman, PhD** \_\_\_\_\_ 45  
New York University, New York, NY

**Elizabeth F. Howell, PhD** \_\_\_\_\_ 14,16  
NYU Postdoctoral Program in Psychotherapy  
and Psychoanalysis, New York, NY

## I

**Ai Ikunaga, PsyD** \_\_\_\_\_ 39  
Private Practice, Philadelphia, PA

**Hazel Ipp, PhD** \_\_\_\_\_ 41  
Toronto Institute for Contemporary  
Psychoanalysis, Toronto, ON Canada

**Sheldon Itzkowitz, PhD** \_\_\_\_\_ 16  
NYU Postdoctoral Program in Psychotherapy  
and Psychoanalysis, New York, NY

## J

**Pilar Jennings, PhD** \_\_\_\_\_ 35  
Union Theological Seminary, New York, NY

**Elliot Jurist, PhD, PhD** \_\_\_\_\_ 20,36,41,48  
The City University of New York, New York, NY

## K

**Rachel Kabasakalian McKay, PhD** \_\_\_\_\_ 12,42,43  
Institute for Relational Psychoanalysis of  
Philadelphia, Philadelphia, PA; Stephen Mitchell  
Center for Relational Studies, New York, NY

**Margery Kalb, PsyD** \_\_\_\_\_ 37  
NYU Postdoctoral Program in Psychotherapy  
and Psychoanalysis, New York, NY

**Rhona Kaplan, MSW** \_\_\_\_\_ 46  
William Alanson White Institute, New York, NY

**Heejin Kim, PhD** \_\_\_\_\_ 34  
Swarthmore College, Swarthmore, PA

**Steven H. Knoblauch, PhD** \_\_\_\_\_ 18,31  
New York University, New York, NY

**Stephanie Koziej** \_\_\_\_\_ 48  
Emory University, Atlanta, GA

**Steven Kuchuck, DSW** \_\_\_\_\_ 44  
National Institute for the Psychotherapies,  
New York, NY

## L

**Lynne Layton, PhD** \_\_\_\_\_ 20,21,33,39  
Massachusetts Institute for Psychoanalysis,  
Boston, MA

**Julie Leavitt, MD** \_\_\_\_\_ 35  
Psychoanalytic Institute of Northern  
California, San Francisco, CA

**Annie Lee Jones, PhD** \_\_\_\_\_ 15,31  
New York Harbor Department of Veterans  
Affairs, Jamaica Estates, NY

# LIST OF PRESENTERS (CONTINUED)

**Laura Levin, PhD** \_\_\_\_\_ 15  
The Family Institute at Northwestern University, Evanston, IL

## M

**Alicia A. MacDougall, BA** \_\_\_\_\_ 40  
Antioch University New England, Keene, NH

**Barry Magid, MD** \_\_\_\_\_ 15,35  
Institute for Contemporary Psychotherapy, New York, NY

**Norka T. Malberg, PsyD** \_\_\_\_\_ 10,31,36,40  
Yale Child Study Center, School of Medicine, New Haven, CT

**Johanna Malone, PhD** \_\_\_\_\_ 40  
Harvard University, Cambridge, MA

**Bianca Manrique, PA** \_\_\_\_\_ 15  
Mexican Association for Psychoanalytic Practice, Mexico City, Mexico

**Karen Maroda, PhD, ABPP** \_\_\_\_\_ 29  
Independent Practice, Milwaukee, WI

**Kareem Matouk** \_\_\_\_\_ 19  
Long Island University, Brooklyn, NY

**Julia Mayer, PsyD** \_\_\_\_\_ 39  
Private Practice, Media, PA

**Jill Ragozzino McElligott, MSS, LCSW** \_\_\_\_\_ 20  
Psychoanalytic Center of Philadelphia, Haverford, PA

**Nancy McWilliams, PhD, ABPP** \_\_\_\_\_ 29,36  
Rutgers Graduate School of Applied and Clinical Psychology, New Brunswick, NJ

**Kevin Meehan, PhD** \_\_\_\_\_ 19  
Long Island University, Brooklyn, NY

**Almas (Ally) Merchant, PhD** \_\_\_\_\_ 17,28  
Brightpoint Health, Brooklyn, NY

**Molly Merson, MFT** \_\_\_\_\_ 35  
Psychoanalytic Institute of Northern California, San Francisco, CA

**Marilyn Meitzl, PhD, ABPP** \_\_\_\_\_ 20,22  
Kansas City Institute of Contemporary Psychoanalysis, Kansas City, MO

**Jon Mills, PsyD, PhD, ABPP** \_\_\_\_\_ 16,28  
Adler Graduate Professional School, Toronto, ON

**Mahima Muralidharan, PsyD** \_\_\_\_\_ 18  
Private Practice, San Francisco, CA

**J. Christopher Muran, PhD** \_\_\_\_\_ 19  
Derner School of Psychology, Adelphi University, Garden City, NY

**Maureen Murphy, PhD** \_\_\_\_\_ 15,30  
Psychoanalytic Institute of Northern California, San Francisco, CA

## N

**Carrie Nantais, PhD** \_\_\_\_\_ 15  
The Michigan Psychoanalytic Institute, Farmington, IL

**Sanjay Nath, PhD** \_\_\_\_\_ 30,33,39  
Widener University, Chester, PA

**Ellen D. Nasper, PhD** \_\_\_\_\_ 17  
Yale School of Medicine, New Haven, CT

## O

**Nadine Obeid, PhD** \_\_\_\_\_ 39  
William Alanson White Institute, New York, NY

**Hilary Offman, MD** \_\_\_\_\_ 37  
Toronto Institute for Contemporary Psychoanalysis, Toronto, ON Canada

**Donna Orange, PhD, PsyD** \_\_\_\_\_ 40  
NYU Postdoctoral Program in Psychotherapy and Psychoanalysis, New York, NY

**Spyros D. Orfanos, PhD, ABPP** \_\_\_\_\_ 34,47  
NYU Postdoctoral Program in Psychotherapy and Psychoanalysis, New York, NY

**Duangporn O'Toole, MS, MS** \_\_\_\_\_ 34  
Chestnut Hill College, Philadelphia, PA

## P

**Nishant Patel, PsyD** \_\_\_\_\_ 34  
VA Medical Center, Washington, DC

**Ryan Parker, LCSW** \_\_\_\_\_ 14  
Center for Psychoanalytic Studies, Austin, TX

**Ann Pellegrini, PhD** \_\_\_\_\_ 40  
NYU Postdoctoral Program in Psychotherapy and Psychoanalysis, New York, NY

**Ari Pizer, PsyD, MMT** \_\_\_\_\_ 30  
Widener University, Chester, PA

**Barbara Pizer, EdD, ABPP** \_\_\_\_\_ 44  
Massachusetts Institute for Psychoanalysis, Cambridge, MA

**Stuart Pizer, PhD, ABPP** \_\_\_\_\_ 41,44  
Massachusetts Institute for Psychoanalysis, Cambridge, MA

**Kathleen Pogue White, PhD** \_\_\_\_\_ 12,42,43  
Pogue White Consultancy, LLC, New York, NY

**JoAnn Ponder, PhD** \_\_\_\_\_ 14,30  
Center for Psychoanalytic Studies, Austin, TX

**Natalia Potter, LMSW** \_\_\_\_\_ 15  
Manhattanville College, South Salem, NY

**Dionne R. Powell, MD** \_\_\_\_\_ 20  
Columbia University Center for Psychoanalytic Training and Research, New York, NY

**Tracy A. Prout, PhD** \_\_\_\_\_ 19  
Yeshiva University, Bronx, NY

**Scott D. Pytluk, PhD, ABPP** \_\_\_\_\_ 18,36  
Illinois School of Professional Psychology, Chicago, IL

## R

**David Ramirez, PhD, ABPP** \_\_\_\_\_ 35  
Swarthmore College, Swarthmore, PA

**Luis Ramirez, MSW, LCSW** \_\_\_\_\_ 40  
University of Pennsylvania, Philadelphia, PA

**Romy A. Reading, PhD** \_\_\_\_\_ 19  
NYU Postdoctoral Program in Psychotherapy and Psychoanalysis, New York, NY

**Joseph S. Reynoso, PhD** \_\_\_\_\_ 37  
Metropolitan Institute for training in psychoanalytic psychotherapy, New York, NY

**Janie Riley, MFT** \_\_\_\_\_ 35  
Psychoanalytic Institute of Northern California, San Francisco, CA

**Benjamin Ringler, MFT** \_\_\_\_\_ 35  
Psychoanalytic Institute of Northern California, San Francisco, CA

**Gregory Rizzolo, PhD** \_\_\_\_\_ 47  
Chicago Institute for Psychoanalysis, Chicago, IL

**Larry Rosenberg, PhD** \_\_\_\_\_ 19  
Private Practice, Stamford, CT

**Emma Routhier, MA** \_\_\_\_\_ 33  
City College of New York, New York, NY

**Benjamin Rubin, PsyD** \_\_\_\_\_ 13  
Rockland Children's Psychiatric Center, Orangeburg, NY

**M Sasha Rudenshine, PhD** \_\_\_\_\_ 33  
City College of New York, New York, NY

## S

**Avgi Saketopoulou, PsyD** \_\_\_\_\_ 45  
NYU Postdoctoral Program in Psychotherapy and Psychoanalysis, New York, NY

**Leilani Salvo Crane, PsyD** \_\_\_\_\_ 28,35,43  
Independent Practice, Swarthmore, PA

**Shara Sand, PsyD** \_\_\_\_\_ 20,21,28,46  
Manhattan School of Music, New York, NY

**Christine Schmidt, MSW** \_\_\_\_\_ 18  
Private Practice, Brooklyn, NY

**Kyle J. Schultz, PsyD** \_\_\_\_\_ 14  
University of Pennsylvania, Philadelphia, PA

**Francesca Schwartz, PhD** \_\_\_\_\_ 14  
IPTAR, New York, NY

**Steven Seidman, PhD** \_\_\_\_\_ 37  
Private Practice, New York, NY

**Stephen Seligman, DMH** \_\_\_\_\_ 20,22,30,38  
University of California, San Francisco, CA

**Dhwani Shah, MD** \_\_\_\_\_ 20  
Psychoanalytic Center of Philadelphia, Philadelphia, PA

**Ali Shames-Dawson, MA** \_\_\_\_\_ 33  
New School for Social Research, New York, NY

**Jabeen Shamji, MA** \_\_\_\_\_ 40  
University North Texas, Denton, TX

**Lara Sheehi, PsyD** \_\_\_\_\_ 33,39  
The George Washington University, Washington, DC

**Stephen Sheehi, PhD** \_\_\_\_\_ 44  
College of William and Mary, Williamsburg, VA

**Deborah Sherman, BC-DMT, LMHC** \_\_\_\_\_ 17  
Institute for the Psychoanalytic Study of Subjectivity, New York, NY

**Regina Shields, PhD** \_\_\_\_\_ 18  
Private Practice, Oakland, CA

**Virginia Shiller, PhD** \_\_\_\_\_ 45  
Yale University Child Study Center, New Haven, CT

**Laurel M. Silber, PsyD** \_\_\_\_\_ 14,29,31  
Institute of Relational Psychoanalysis of Philadelphia, Philadelphia, PA

**Sandra Silverman, LCSW** \_\_\_\_\_ 17  
Institute for Contemporary Psychotherapy, New York, NY

**Felicia Sitrin** \_\_\_\_\_ 19  
Long Island University, Brooklyn, NY

**Jon Sleivold, PsyD** \_\_\_\_\_ 16  
Norwegian Character Analytic Institute, Oslo, Norway





**Society for Psychoanalysis & Psychoanalytic  
Psychology: Division 39 of the American Psychological  
Association • 39th Annual Spring Meeting**

c/o Natalie Shear Associates  
1000 Vermont Ave., NW, Third Floor  
Washington DC, 20005



**RESONANT VOICES**

Sameness, Difference and Mutuality  
in the Consulting Room, Clinic and Community

**April 3-6, 2019**

**LOEWS PHILADELPHIA HOTEL**  
1200 Market St.  
Philadelphia, PA 19107

[www.division39springmeeting.com](http://www.division39springmeeting.com)

PRESORTED  
FIRST CLASS MAIL  
U.S. POSTAGE PAID  
LAUREL, MD  
PERMIT NO. 6326