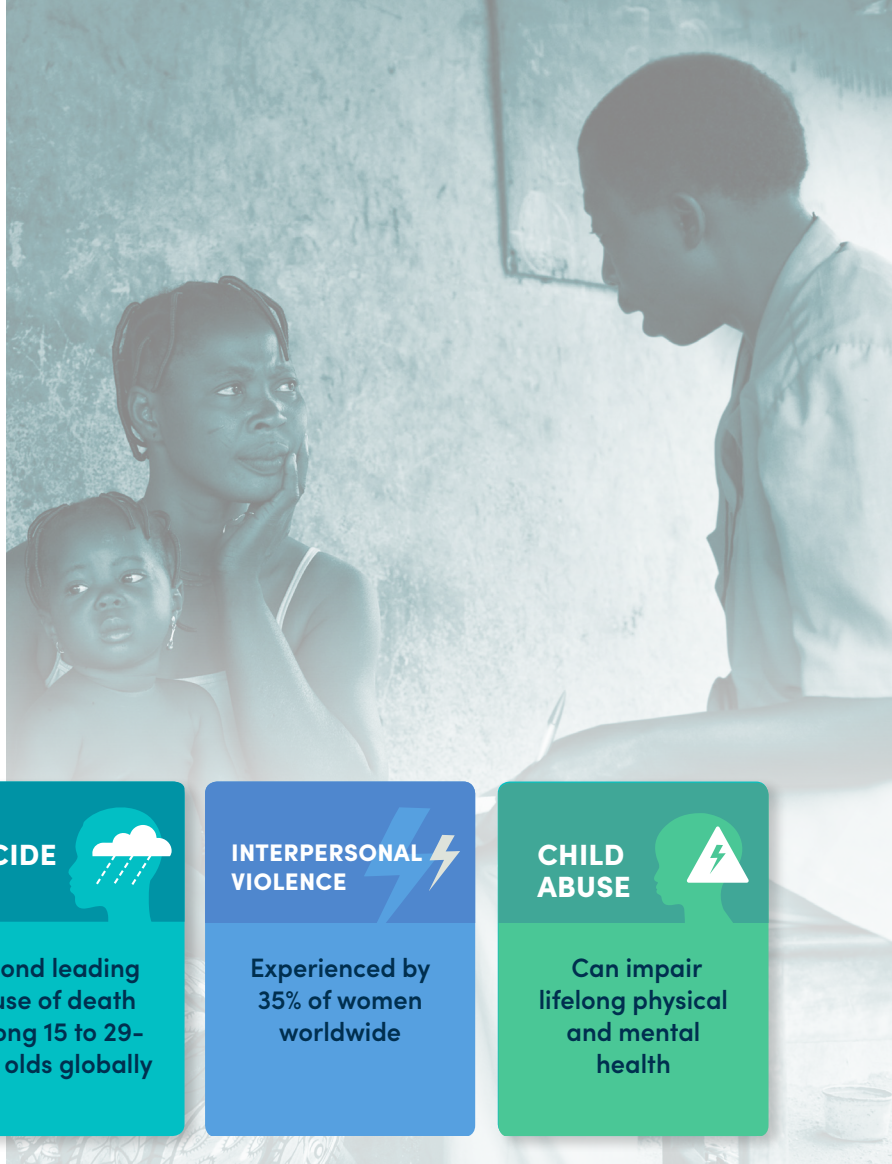




# Every Global Program Should Ask About Safety

BE A PART OF THE SOLUTION

High-risk public health issues like **Suicide**, **Interpersonal Violence (IPV)**, and **Child Abuse** are major concerns in low-to-middle-income countries around the world. Yet safety and risk are rarely screened for or addressed by global development programs.



## SUICIDE



Second leading cause of death among 15 to 29-year olds globally

## INTERPERSONAL VIOLENCE



Experienced by 35% of women worldwide

## CHILD ABUSE



Can impair lifelong physical and mental health

High-risk safety issues have **profound** negative impacts on individual lives, families, & society

- Increase in deaths and injuries
- Heightened aggression and violence towards self and others
- Long-term mental health issues (e.g., depression, traumatic stress, anxiety)
- Negative economic impacts (e.g., loss of breadwinner/caregiver)

## WHY ORGANIZATIONS OFTEN DO NOT SCREEN FOR SAFETY:

- Safety is not core to their mission/program
- Not trained in how to screen for safety issues
- Unaware of what steps to take when someone reveals safety risks
- Unable to find resources or partners for ongoing care or support

## MAKE SAFETY A GLOBAL PRIORITY

With growing evidence that suicide, IPV, and child abuse are prevalent, we believe every organization or agency working in low-to-middle income communities could assess everyone for safety risks and offer basic support or resources.

# A Viable Solution To Reducing Safety Risks

**Common Elements Treatment Approach (CETA)** contains an element that provides an easy and effective way to integrate safety into a wide-range of existing global programs and activities

## COMMON ELEMENTS TREATMENT APPROACH

CETA is a scientifically-proven transdiagnostic intervention, combining treatments for a range of mental health issues (trauma, depression, anxiety, substance abuse) into a single model.

CETA's modular, community-based approach addresses several mental health challenges in concert, enabling scale-up and sustainability in low-to-middle-income environments.

Engagement  
& Education

Cognitive Coping  
/ Think Differently

Behavioral  
Activation

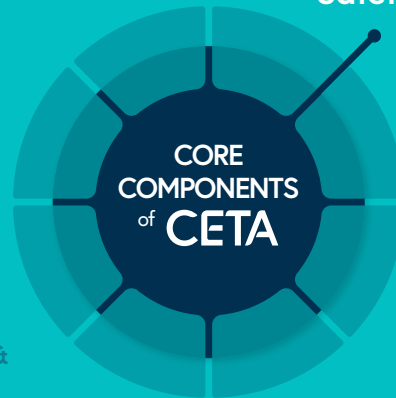
Confronting Fears &  
Trauma Memories

Safety Assessment  
& Planning

Substance Abuse  
Intervention

Problem-  
Solving

Anxiety  
Management



## THE CETA SAFETY ELEMENT ENABLES THE ABILITY TO:



Identify local  
resources or  
partners



Determine how  
to refer clients  
for higher-  
levels of care



Assess safety  
risks with just  
a few standard  
questions



Develop individualized  
safety plans to:

- Identify warning signs
- Recommend coping practices
- Reduce means to hurt self/others
- Develop a safety watch

## SAFETY TRAINING FOR YOUR ORGANIZATION

CETA partners with organizations of all sizes and areas-of-focus to offer support to integrate safety capacity into public health programs and interventions around the world

We offer **ONE-DAY TRAININGS** with options for ongoing support for:

- Non-professionals
- NGO/research staff
- Front-line field workers
- Global development professionals
- Country directors
- Organizational staff



**READY TO INTEGRATE SAFETY  
INTO YOUR PROGRAM?**

TO LEARN MORE VISIT [CETAglobal.org](http://CETAglobal.org)

OR CONTACT:

Laura Murray, Ph.D.  
[lmurray@CETAglobal.org](mailto:lmurray@CETAglobal.org)

Stephanie Skavenski, MPH, MSW  
[sskavenski@CETAglobal.org](mailto:sskavenski@CETAglobal.org)