

Felt Tape – is manufactured as an anti-marking product. The felt coating stops printed surfaces being marked, scratched or smudged.



Application 1

Can be used on folder gluers on parts of the machine such as belts on the infeed and during the folding process any surface that comes into contact with cartons or boxes.



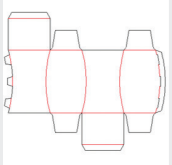
Application 2

Used on die cutting machines in the stripping and blanking stations, when the printed surface is reverse i.e. printed face opposite to the die face.



Application 3

Used for creasing into or onto – It's difficult to create a crease in a curve or radius cutting small piece of matrix. A good example of this is elliptical wallets either on a flat bed or cylinder die cutter. Using the felt tape as a female matrix or surface in relation to the male crease rule will enable a similar result as a matrix. The definition is not as good, but it will do the job. To improve the definition, you can always lay another strip on top of the first.



Contact our UK customer service team

01933 273444

Becky: becky.webb@candtmatrix.co.uk

Emma: emmaclose@candtmatrix.co.uk

C&T **MATRIX**

FELT FOLDER

ANTI MARKING TAPE