

**TUESDAY** *Make plans to join us!*  
**MARCH 22 2022**

Lewistown Livestock Yards | Lewistown, MT  
Lunch • Noon | Sale • 1 p.m.



Musgrave Feature



Tehama Patriarch F028



Spring Cove Crossbow



Leachman Resource 8566

*Selling*  
**38 Yearling  
Angus Bulls**

**1 Registered  
Donation Heifer**

**Sires Featured:**

Circle L Gus • A A R Frontman(Gambler)  
O C C Cortez • Musgrave Feature  
Leachman Resource 8566  
Patriarch F028  
Shipwheel Resource 5621

***DVAuction***



*Offering bulls,  
selling  
cow families*

*Snowy Mountain Angus*

# TUESDAY *Make plans to join us!* MARCH 22, 2022

Lewistown Livestock Yards | Lewistown, MT  
Lunch at Noon | Sale at 1 p.m.

## Auctioneer

Kyle Shobe

## Special Representatives

Andy Rest, *Cattle Business Weekly* . . . . . 406-670-5678  
Jay Rost, *DVAuction* . . . . . 406-978-2124

## Sale Day Phones

406-535-3535 Lewistown Livestock Yards  
406-538-3471 Lewistown Livestock Yards  
406-350-1059 JR Lund  
406-951-0212 Katie Lund  
406-366-0292 Theresa Abegglen

## Sale Order

Bulls will sell in catalog order

## EPDs

EPDs are current as of 2/25/2022. Updated EPDs can be viewed at [www.Angus.org](http://www.Angus.org)

## Terms and Conditions

All cattle sell under the terms and conditions of the American Angus Association. Terms of the sale are cash on sale day, unless prior arrangements have been made. Announcements made the day of the sale take precedence over all the printed information.

## Delivery

We are offering free deliver on all bulls up to 300 miles with a total purchase of \$3000.00 or more. The balance of the distance will be at a cost. Bulls will be delivered starting anytime after the sale at a convenient time for both parties, but arrangements must be made before April 15th.

We are also offering a \$50 credit if you pick your bull up the day of the sale.

## Sight-Unseen Purchases

If you are unable to attend, but wish to place a bid, call any of the sale day phones. Your satisfaction is guaranteed. Our sale will be broadcast live on [DVAuction.com](http://DVAuction.com). Please call Jay Rost at 406-978-2124 for auction information. See page 4.

This sale will be broadcast live on the internet.



## 1st Year Guarantee

We are guaranteeing our bulls for the first breeding season for any bull purchased over \$3000. A breeding season is defined as the 90-day period following the first turnout of the bull. If a replacement bull is available, he will be provided or if the buyer prefers, credit toward one bull will be given in the following sale, less salvage value of the injured bull. Please notify us as soon as possible should injury occur and prior to the injured bull being sold for salvage.

## Registrations

Transferred on request of buyer.

## Retained Interest

All consignors will retain 1/3 semen interest in all bulls sold.

## Fertility

Rockin L bulls were fertility tested by Clear Creek Veterinary; Dr. Logan Potts, DVM. Snowy Mountain Angus bulls have been tested by Laurie Gaugler. Every bull has tested negative for BVD.

## Liability

All persons attending the sale do so at their own risk, legal or otherwise for their own safety or the behavior of the animals. The owner's and sale staff assume no liability for property loss or any accidents that may occur.



Theresa Abegglen  
406-366-0292 or 406-374-2222  
[ffatheresal@yahoo.com](mailto:ffatheresal@yahoo.com)



J.R. & Katie Lund  
406-350-1059 or 406-951-0212  
[rockinLgenetics@hotmail.com](mailto:rockinLgenetics@hotmail.com)

Dear Fellow Cattlebreeders:

We would like to take this opportunity to extend an invitation to our 7th Annual Bull Sale, which will be held on Tuesday March 22, 2022 at the Lewistown Livestock Auction Yards, starting at 1:00 pm. We hope to see you there!

This pen of bulls have been selected as our top end bulls that provide optimal calving ease, efficient gain, eye appeal, and phenomenal growth. This past fall, we culled harder on the bulls than ever before creating a solid, uniform set for the sale. As you look through this catalog, you will find some exciting new outcross genetics to compliment your existing herds.

This group of bulls have been fed out by Jeremy Grove of Porter Ridge Livestock, LLC located near Moccasin, MT. We invite you to stop by anytime and check out this great pen of bulls. If you have any questions or need information, please feel free to contact me at any time.

As we all know and felt, 2021 was not for the faint of heart. It was one of the most difficult years we have all lived through in several decades. With one of the widest spread droughts in history, created lighter calves in the fall, massive herd dispersions, as well as record high feed costs going into the winter. As dry as it was this past summer, I haven't heard any complaints about getting snow other than maybe they wished there was more of it. I think that tells us all what a humbling year 2021 was for all involved in agriculture.

Even though 2021 was less than ideal on several accounts, the Good Lord still took care of us and our cattle. The pasture conditions we had in Central Montana gave us a "hold nothing back" view of what our cows are capable of and what they can tolerate. I was so thankful for the amount of feed efficiency bred into this herd so they could hold their own in less-than-ideal feeding conditions this summer and going into fall. The bulls were a little lighter going into the feedlot this past year, but hit the ground running right away. When we took the yearling weights in early January, the group of bulls were averaging a 4.12 pounds per day on the average. They have far surpassed any of our expectations and we couldn't be happier with the performance of this group of yearling bulls. This is, by far, our most heavily muscled group of bulls and we are completely confident they will walk into the ring on sale day packing plenty of flesh to stay in shape during their first breeding season, without being too fat to get the job done.

Please join us for lunch starting at noon at Lewistown Livestock Yards. Thank you for your time and consideration and we look forward to seeing you at the sale!

Theresa Abegglen, Snowy Mountain Angus  
406-366-0292 • 406-374-2222 • ffatheresal@yahoo.com



  
Snowy Mountain Angus

Welcome to our 7th annual bull sale! A full year of unknowns from start to finish. Again, we are truly blessed that we are here and proud to be serving all of our customers and are so appreciative of your continued support to our program. Drought conditions proved to be challenging this year for producers and cattle alike. The cows and calves were pushed to their limits and unfortunately we were forced to do some strong culling due to lack of pasture and hay. We continued to have cattle scattered throughout, but thankful for each and every lease opportunity and every day we can continue to move forward in the industry.

We are confident in our genetics and the quality of our cattle. There is a lot to be said of their performance, especially in the adverse conditions of the past few years. This offering of bulls was no exception. They were fed out at our home feedlot again this year, by adding a mixer wagon we were better able to utilize our feed and the bulls did phenomenal with a ration of alfalfa and grain hay. Being hand-fed twice daily with a B-15 amino pellet from Hubbard Feeds, the docility is very present. We couldn't be more pleased with their performance and growth. Stop by anytime you want to walk through the bulls or just come say hello. Again your feedback is extremely valuable to our program and our success. We look forward to seeing you sale day!

JR, Katie, Bodie, Nash, Oakley, Blaze & Kort Lund

406-350-1059 • 406-951-0212  
rockinlgenetics@hotmail.com





# Reference Sires

## Tehama Patriarch F028



Reference Sire

### Tehama Patriarch F028

\*18981191 | calved: 02/03/17

HOOVER DAM  
S S NIAGARA Z29  
JET S S X144

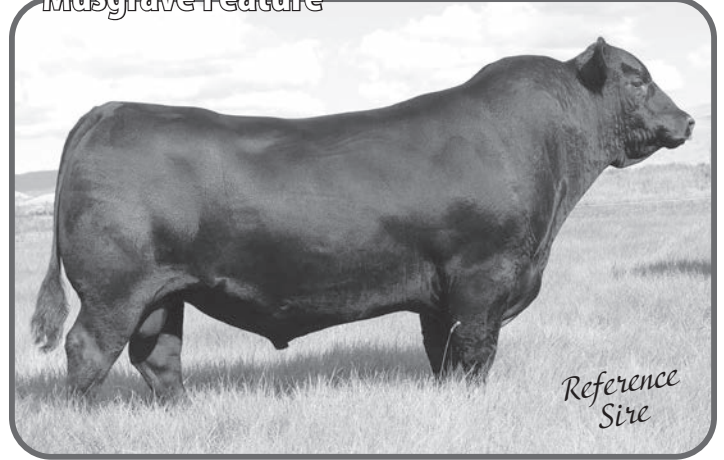
SYDGEN C C & 7  
ERICA OF ELLSTON C124  
B/R NEW DAY 454  
JET S S T151

CONNEALY THUNDER  
TEHAMA ELITE BLACKBIRD D826  
TEHAMA ELITE BLACKBIRD Z630

BALDRIDGE KABOOM K243 KCF  
PARKA OF CONANGA 241  
MCC DAYBREAK  
TEHAMA ELITE BLACKBIRD T766

CED	BW	WW	YW	Milk	SC	Marb	RE	Fat	\$F	\$B
+15	-1.8	+66	+132	+34	+1.05	+0.90	+0.98	+0.016	+105	+171

## Musgrave Feature



Reference Sire

### Musgrave Feature

\*19202252 | calved: 01/08/18

MUSGRAVE BIG SKY  
MUSGRAVE SKY HIGH 1535  
FLAG QUEEN W 00649

CONNEALY EARNAN 076E  
SAV PRIMROSE 7861  
S A V 004 DENSITY 4336  
PLATTEMERE QUEEN W 660

MOGCK BULLSEYE  
MUSGRAVE PRIDE 1416-166  
WATERS PRIDE ROSE 166

MOGCK SURE SHOT  
MOGCK MARY 1255  
BON VIEW NEW DESIGN 878  
PRIDE ROSE AFTON L I 130 N

CED	BW	WW	YW	Milk	SC	Marb	RE	Fat	\$F	\$B
+0	+2.9	+62	+113	+22	+0.55	+0.61	+0.56	+0.032	+79	+126

## Spring Cove Crossbow



Reference Sire

### Spring Cove Crossbow

17924903 | calved: 01/24/14

SUMMITCREST COMPLETE 1P55  
KM BROKEN BOW 002  
SUMMITCREST PRINCESS 0P12

C F RIGHT DESIGN 1802  
SUMMITCREST ELBA 1M17  
BASIN AMBUSH 8161  
SUMMITCREST PRINCESS 2J10

C C A EMBLAZON 702  
SPRING COVE PRETTY 205  
SPRING COVE PRETTY 009

O C C EMBLAZON 854E  
LIMESTONE BLACKCAP R128  
SYDGEN 928 DESTINATION 5420  
SPRING COVE PRETTY 737

CED	BW	WW	YW	Milk	SC	Marb	RE	Fat	\$F	\$B
+15	-1.5	+56	+106	+27	+0.37	+1.02	+0.60	+0.009	+101	+168

## Leachman Resource 8566



Reference Sire

### Leachman Resource 8566

19324789 | calved: 01/30/18

RITO 707 OF IDEAL 3407 7075  
S A V RESOURCE 1441  
S A V BLACKCAP MAY 4136

R R RITO 707  
IDEAL 3407 OF 1418 076  
S A V 8180 TRAVELER 004  
S A V MAY 2397

TC ABERDEEN 759  
LEACHMAN BLACKCAP 1046  
LEACHMAN BLACKCAP 6009

C R A BEXTOR 872 5205 608  
TC BLACKBIRD 4034  
LEACHMAN RIGHT TIME  
LEACHMAN BLACKCAP 3006

CED	BW	WW	YW	Milk	SC	Marb	RE	Fat	\$F	\$B
-2	+3.7	+64	+119	+24	+1.15	+0.35	+0.80	+0.003	+87	+127

# Reference Sires

Reference Sire

## Circle L Gus

\*17993084 | calved: 01/24/14

S ALLIANCE 3313  
**S CHISUM 6175**  
S GLORIA 464

HARB PENDLETON 765 J H  
**CIRCLE L PRIDE X097**  
CIRCLE L PRIDE 38T

PAWS UP ALLIANCE 9561  
PAWS UP 9048 EMULATION EXT  
S ECLIPSE 169  
S GLORIA 209

S A V FINAL ANSWER 0035  
H A R B BLACK LADY 375 J H  
G A R RETAIL PRODUCT  
CIRCLE L PRIDE 550R

CED	BW	WW	YW	Milk	SC	Marb	RE	Fat	\$F	\$B
+14	-1.1	+63	+105	+18	+63	+22	+64	+0.77	+121	+148

Reference Sire

## A A R Frontman 8071

19231150 | calved: 02/05/18

A A R FRONTMAN 3132  
**A A R FRONTMAN 6073**  
A A R ELLUNA 4142

KG JUSTIFIED 3023  
**A A R JANNET 6164**  
A A R JANNET 2012

APEX FRONTMAN 081  
A A R BLACKBIRD 9044  
D R SIERRA CUT 7404  
K A ELLUNA 9349

CONNEALY JUDGMENT  
KG MISS MAGIC 1443  
A A R TEN X 7008 S A  
A A R JANNET 0034

CED	BW	WW	YW	Milk	SC	Marb	RE	Fat	\$F	\$B
+9	-1.1	+84	+150	+22	+1.55	+75	+50	+0.015	+103	+156

Reference Sire

## SMA Tundra 941

19647154 | calved: 02/16/19

BASIN EXCITEMENT  
**BUSHS TUNDRA 602**  
BUSHS LADY TIMELESS 2850

KRAMERS APOLLO 317  
**KR LADY CASH 6302**  
WK LADY CASH 0270

BASIN EXPEDITION R156  
BASIN LADY S532 AK  
WMR TIMELESS 458  
BUSHS LADY FREEDOM 9812

KOUPAL JUNEAU 797  
KRAMERS EVERGREEN ERICA 1204  
MOORE BEEF  
WK LADY CASH 6468

CED	BW	WW	YW	Milk	SC	Marb	RE	Fat	\$F	\$B
+5	+3.0	+66	+110	+27	na	+21	+61	+0.013	+94	+125

Reference Sire

## O C C Cortez 819C

18736736 | calved: 05/07/15

O C C REAR END 751R  
**O C C BIG TIME 746Z**  
O C C DIXIE ERICA 771R

O C C PAXTON 730P  
**O C C DIXIE ERICA 680W**  
O C C DIXIE ERICA 903E

O C C HOMER 650H  
FCC REVOLUTION ROSE 995N  
O C C MISSING LINK 830M  
O C C DIXIE ERICA 776M

O C C FOCUS 813F  
O C C BLACKBIRD 736K  
O C C CANDOR 763C  
O C C DIXIE ERICA 799B

CED	BW	WW	YW	Milk	SC	Marb	RE	Fat	\$F	\$B
-1	+3.4	+59	+96	+11	+1.02	+14	+63	-0.012	+59	+89

Reference Sire

## Rockin L Upward Z238

17656224 | calved: 02/13/12

CONNEALY ONWARD  
**SITZ UPWARD 307R**  
SITZ HENRIETTA PRIDE 81M

WOODHILL COMBO 344-626  
**BALDRIDGE BLACKBIRD N128**  
BALDRIDGE BLACKBIRD 217H

CONNEALY LEAD ON  
ALTUNE OF CONANGA 6104  
SITZ VALUE 7097  
SITZ HENRIETTA PRIDE 1370

G T TIME SAVER  
WOODHILL LASS 1172-344  
SUMMITCREST HI FLYER 3B18  
J B BLACKBIRD BLOSSOM 139B

CED	BW	WW	YW	Milk	SC	Marb	RE	Fat	\$F	\$B
+0	+2.8	+63	+113	+26	+1.86	+49	+51	+0.027	+111	+152

Reference Sire

## Rockin L Down Payment C35

18237910 | calved: 02/07/15

BASIN FRANCHISE P142  
**EF COMPLEMENT 8088**  
EF EVERELDA ENTENSE 6117

G A R PREDESTINED  
**DTC JESSIE 9119**  
HOS BIG ELBAN'S JESSIE 5061

C A FUTURE DIRECTION 5321  
BASIN CHLOE 812L  
BR MIDLAND  
H F EVERELDA ENTENSE 869

B/R NEW DESIGN 036  
G A R EXT 4206  
HOS BIG ELBAN OF GRAHAM 3009  
JETHRO'S STOCKWOMAN 365

CED	BW	WW	YW	Milk	SC	Marb	RE	Fat	\$F	\$B
+2	+0.6	+53	+86	+34	+50	+68	+38	+0.035	+78	+125

Reference Sire

## Connealy Front & Center

\*17029809 | calved: 01/10/11

CONNEALY FRONT PAGE 0228  
**KESSLERS FRONTMAN R001**  
KESSLERS BELL 0024

CONNEALY RIGHT ANSWER 746  
**JAIS OF CONANGA 9585**  
JASE OF CONANGA 4660

CONNEALY FOREFRONT  
EBONY LIT OF CONANGA 840  
TC RANCHER 056  
KESSLERS BELL 8055

S A V FINAL ANSWER 0035  
HAPPY DELL OF CONANGA 262  
MYTTY IN FOCUS  
JAZE OF CONANGA 234

CED	BW	WW	YW	Milk	SC	Marb	RE	Fat	\$F	\$B
+11	-0.6	+61	+105	+31	+1.56	+22	+77	+0.022	+77	+110

# DVAuction

www.dvauction.com

Watch & Bid online for FREE!

**Can't make the sale?**  
Let DVAuction bring the sale to you!  
**Busy during the sale?**  
Let DVAuction represent your bid!

**Visit www.dvauction.com and Register!**  
It's as easy as 1, 2, 3...

1. Create an account at www.dvauction.com under the "create new account" tab
2. Apply for bidding by clicking "apply for bidding" in the upper left corner of your screen, at least 24 hours prior to the auction
3. Tune into the sale and make your purchases!

For General Questions Please Contact Our Office:  
(402) 316-5460 or support@dvauction.com

\*High Speed Internet Access Required





# 1 Rockin L Cross Bow J12

20279976 | calved: 02/19/21

KM BROKEN BOW 002  
**SPRING COVE CROSSBOW**  
 SPRING COVE PRETTY 205

A A R TEN GAUGE 1501  
**ROCKIN L BEEBE QUEEN 748**  
 DTC BIG EYE 016

SUMMITCREST COMPLETE 1P55  
 SUMMITCREST PRINCESS 0P12

C C A EMBLAZON 702  
 SPRING COVE PRETTY 009

A A R TEN X 7008 S A  
 A A R CLOVA PRIDE 9549

ALC BIG EYE D09N  
 DTC BEEBE QUEEN 8141

Birth Wt | **75**  
 Wean Wt | **692**  
 205 Wt | **644**  
 365 Wt |

CED	BW	WW	YW	Milk	SC	Marb	RE	Fat	SF	SB
+10	+0.5	+65	+128	+38	+98	+39	+78	-.033	+112	+156

Heifer bull. Maternal Grandam has raised many daughters and bulls throughout her years. 748 is just one of many continuing on her legacy. Crossbow is a proven sire with data from the ABS Sire Alliance; Top 3% total profit, top 10% feed efficiency, and top 20% Maternal Index.



# 3 Rockin L Resource J09

20293544 | calved: 02/18/21

S A V RESOURCE 1441  
**SHIPWHEEL RESOURCE 5621**  
 APEX ERISKAY 5506

EF COMPLEMENT 8088  
**ROCKIN L BLACKBIRD 548**  
 BALDRIDGE BLACKBIRD N128

RITO 707 OF IDEAL 3407 7075  
 S A V BLACKCAP MAY 4136

MYTTY IN FOCUS  
 APEXETTE ERISKAY 3032

BASIN FRANCHISE P142  
 EF EVERELDA ENTENSE 6117

WOODHILL COMBO 344-626  
 BALDRIDGE BLACKBIRD 217H

Birth Wt | **85**  
 Wean Wt | **685**  
 205 Wt | **622**  
 365 Wt |

CED	BW	WW	YW	Milk	SC	Marb	RE	Fat	SF	SB
+12	-1.6	+37	+74	+19	+71	+62	+28	+0.041	+87	+130

Heifer bull. Strong cow loaded with longevity.



# 2 Rockin L Crossbow J14

20280010 | calved: 02/20/21

KM BROKEN BOW 002  
**SPRING COVE CROSSBOW**  
 SPRING COVE PRETTY 205

CIRCLE L GUS  
**ROCKIN L BARBARAMERENEIL 801**  
 ROCKIN L BARBARAMERENEIL 603

SUMMITCREST COMPLETE 1P55  
 SUMMITCREST PRINCESS 0P12

C C A EMBLAZON 702  
 SPRING COVE PRETTY 009

S CHISUM 6175  
 CIRCLE L PRIDE X097

SCHIEFELBEIN PROTOCOL 392  
 ROCKIN L BARBARAMERENEIL 338

Birth Wt | **83**  
 Wean Wt | **666**  
 205 Wt | **645**  
 365 Wt |

CED	BW	WW	YW	Milk	SC	Marb	RE	Fat	SF	SB
+9	+0.5	+71	+125	+18	+52	+74	+53	+0.029	+105	+157

Heifer bull and another strong Crossbow son.



# 4 SMA Resource 106

20184656 | calved: 01/16/21

S A V RESOURCE 1441  
**LEACHMAN RESOURCE 8566**  
 LEACHMAN BLACKCAP 1046

BOBCAT BLACK DIAMOND  
**SMA MISS FOREVER 611**  
 KR MISS FOREVER 3375

RITO 707 OF IDEAL 3407 7075  
 S A V BLACKCAP MAY 4136

TC ABERDEEN 759  
 LEACHMAN BLACKCAP 6009

CONNELLY BLACK GRANITE  
 BOBCAT ERICA 870

KOUPALS B&B IDENTITY  
 WK MISS FOREVER 8243

Birth Wt | **91**  
 Wean Wt | **715**  
 205 Wt | **641**  
 Year Wt | **1255**

CED	BW	WW	YW	Milk	SC	Marb	RE	Fat	SF	SB
+0	+3.9	+62	+115	+28	+99	+56	+69	+0.009	+95	+143

This is a phenomenal cross of Leachman Resource on a beautiful Black Diamond daughter. Her pedigree is stacked with Black Granite, Nebraska, and Upward 307R. Combine that with the Resource, Aberdeen, and Right Time on the sire side and you have an incredible, high volume, pounds producing, efficient package. He's definitely a cow bull that packs a huge punch. This cow is reporting a NR of 3@104.





## 5 SMA Pearl Snaps 103

20184670 | calved: 01/13/21

S A V RESOURCE 1441  
**LEACHMAN RESOURCE 8566**  
 LEACHMAN BLACKCAP 1046

KOUPALS B&B IDENTITY  
**KR LOLA 3256**  
 WK LOLA 1257

RITO 707 OF IDEAL 3407 7075  
 S A V BLACKCAP MAY 4136  
 TC ABERDEEN 759  
 LEACHMAN BLACKCAP 6009  
 SITZ UPWARD 307R  
 B&B ERICA 605  
 BON VIEW NEW DESIGN 1407  
 WK LOLA

Birth Wt | **88**  
 Wean Wt | **765**  
 205 Wt | **680**  
 Year Wt | **1355**

CED	BW	WW	YW	Milk	SC	Marb	RE	Fat	SF	SB
+1	+3.2	+64	+124	+27	na	+46	+69	-.003	+103	+147

This is a cowman's bull right here. Heaviest weighing bull we had at the feedlot in January and was showing a 4.96 pound per day average daily gain. He's the type of bull that's going to put pounds on the ground for you and calves that won't miss a beat. He's been catching our eye all summer long and hasn't missed a beat once he went in on feed.



## 6 SMA Resource 146

20184662 | calved: 02/22/21

S A V RESOURCE 1441  
**LEACHMAN RESOURCE 8566**  
 LEACHMAN BLACKCAP 1046

BARSTOW CASH  
**KR LASSIE 4303**  
 WK LASSIE 2552

RITO 707 OF IDEAL 3407 7075  
 S A V BLACKCAP MAY 4136  
 TC ABERDEEN 759  
 LEACHMAN BLACKCAP 6009  
 SITZ DASH 10277  
 BARSTOW QUEEN W16  
 CONNEALY IMPRESSION  
 FLAG PRIM LASSIE 00631

Birth Wt | **84**  
 Wean Wt | **670**  
 205 Wt | **664**  
 Year Wt | **1190**

CED	BW	WW	YW	Milk	SC	Marb	RE	Fat	SF	SB
+6	+1.9	+63	+115	+24	+97	+34	+76	+0.023	+80	+118

This bull is packing quite a punch in so many categories. He's out of our Leachman Resource son we bought and a Cash Pathfinder cow. He's going to be one the deepest sided bulls in the sale with a ton of eye appeal. He's going to produce some heifers you're going to want to retain. His dam has a reported NR of 6@103.

## 7 Rockin L Gus F02 J17

20260612 | calved: 02/20/21

CIRCLE L GUS  
**ROCKIN L GUS F02**  
 ROCKIN L OAKLEY'S QUEEN 615

QUAKER HILL RAMPAGE 0A36  
**ROCKIN L BLACKBIRD 805**  
 ROCKIN L BLACKBIRD 357

S CHISUM 6175  
 CIRCLE L PRIDE X097  
 EF COMPLEMENT 8088  
 DTC QUEEN 12010  
 MCC DAYBREAK  
 QHF BLACKCAP 6E2 OF4V16 4355  
 V D A R REALLY WINDY 4097  
 DTC BLACKBIRD 969

Birth Wt | **89**  
 Wean Wt | **638**  
 205 Wt | **620**  
 365 Wt |

CED	BW	WW	YW	Milk	SC	Marb	RE	Fat	SF	SB
+6	+2.4	+61	+107	+26	+1.53	+53	+94	+0.003	+99	+149



## 8 Rockin L Gambler J04

20276297 | calved: 02/15/21

A A R FRONTMAN 6073  
**A A R FRONTMAN 8071**  
 A A R JANNET 6164

EF COMPLEMENT 8088  
**ROCKIN L QUALITY 602**  
 ROCKIN L QUALITY 402

A A R FRONTMAN 3132  
 A A R ELLUNA 4142  
 KG JUSTIFIED 3023  
 A A R JANNET 2012  
 BASIN FRANCHISE P142  
 EF EVERELDA ENTENSE 6117  
 S A V THUNDERBIRD 9061  
 DTC QUALITY 801

Birth Wt | **75**  
 Wean Wt | **750**  
 205 Wt | **674**  
 365 Wt |

CED	BW	WW	YW	Milk	SC	Marb	RE	Fat	SF	SB
+13	-1.2	+59	+113	+35	+69	+93	+43	+0.047	+83	+141

Herd sire prospect. We are calving the first set of Gambler daughters this year. They are doing great and we are really looking forward to seeing their calves grow throughout the summer. Certified Angus Beef stamp on this bull.








## 9 Rockin L Patriarch J07

20276296 | calved: 02/17/21

S S NIAGARA Z29	HOOVER DAM		
<b>TEHAMA PATRIARCH F028</b>	JET S S X144	Birth Wt	<b>89</b>
TEHAMA ELITE BLACKBIRD D826	CONNEALY THUNDER	Wean Wt	<b>798</b>
	TEHAMA ELITE BLACKBIRD Z630	205 Wt	<b>722</b>
	SITZ UPWARD 307R	365 Wt	
BRUIN UPROAR 0070	FALCON BLACKBIRD 6071		
<b>ROCKIN L QUALITY 512</b>	S A F STRATEGY 9015		
DTC QUALITY 801	MAR MISS QUALITY 6048		

CED	BW	WW	YW	Milk	SC	Marb	RE	Fat	SF	SB
+3	+2.7	+80	+139	+22	+1.50	+0.69	+0.56	+0.037	+110	+160

Herd sire prospect. Patriarch is a new sire for us, but being discovered by a lot of breeders. We are planning on using him more heavily in the coming years. 



## 11 SMA Heavy Metal 108

20184660 | calved: 01/17/21

MUSGRAVE SKY HIGH 1535	MUSGRAVE BIG SKY		
<b>MUSGRAVE FEATURE</b>	FLAG QUEEN W 00649	Birth Wt	<b>85</b>
MUSGRAVE PRIDE 1416-166	MOGCK BULLSEYE	Wean Wt	<b>720</b>
	WATERS PRIDE ROSE 166	205 Wt	<b>646</b>
	VAR ROCKY 80029	Year Wt	<b>1200</b>
WK ROCKY 1004	WK MISS 7554		
<b>KR LASS 3477</b>	H A R B RICK O'SHAY 838 J H		
WK LASS 1435	WK LASS 9518		

CED	BW	WW	YW	Milk	SC	Marb	RE	Fat	SF	SB
+5	+2.0	+53	+99	+26	+0.56	+0.65	+0.46	+0.029	+79	+126

This bull has one of the most solid frames of any bull in the pen. Huge, stout hind legs and wide across the back. This Rocky daughter has performed year after year and never disappoints. The Rocky in the background can throw a little weight at you at birth, but still comes with enough calving ease, you rarely have to assist. The cow reports a NR of 5@101.



## 10 SMA Feature 116

20184668 | calved: 01/22/21

MUSGRAVE SKY HIGH 1535	MUSGRAVE BIG SKY		
<b>MUSGRAVE FEATURE</b>	FLAG QUEEN W 00649	Birth Wt	<b>82</b>
MUSGRAVE PRIDE 1416-166	MOGCK BULLSEYE	Wean Wt	<b>750</b>
	WATERS PRIDE ROSE 166	205 Wt	<b>680</b>
	SITZ UPWARD 307R	Year Wt	<b>1185</b>
KOUPALS B&B IDENTITY	B&B ERICA 605		
<b>KR QUEEN IDELETTE 3353</b>	H S A F BANDO 1961		
SCR QUEEN IDELETTE 80502	SCR QUEEN IDELETTE 60630		

CED	BW	WW	YW	Milk	SC	Marb	RE	Fat	SF	SB
+3	+1.3	+58	+97	+26	+0.79	+0.58	+0.45	+0.025	+81	+125

This bull could be used on cows or larger framed heifers as well. His dam has been a stellar performer from the start and we have kept multiple females out of her over the years that are still in the herd. She reports a NR of 4@104



## 12 SMA Aether 198

20184657 | calved: 01/27/21

MUSGRAVE SKY HIGH 1535	MUSGRAVE BIG SKY		
<b>MUSGRAVE FEATURE</b>	FLAG QUEEN W 00649	Birth Wt	<b>90</b>
MUSGRAVE PRIDE 1416-166	MOGCK BULLSEYE	Wean Wt	<b>775</b>
	WATERS PRIDE ROSE 166	205 Wt	<b>727</b>
	KOUPALS B&B IDENTITY	Year Wt	<b>1145</b>
MUSGRAVE AVIATOR	MCATL FOREVER LADY 1429-138		
<b>SMA MISS FRANCINE 728</b>	ER JUSTICE N013		
ICC EVERELDA ENTENSE 1832	ICC EVERELDA ENTENSE 8530		

CED	BW	WW	YW	Milk	SC	Marb	RE	Fat	SF	SB
+1	+2.3	+66	+106	+19	+0.94	+0.79	+0.59	+0.031	+82	+136

This was the heaviest bull of the cow this fall at 775 pounds in the middle of September. He's out of a beautiful Aviator daughter, who has been shown in a couple of fairs and just received her Pathfinder Status this year. She is going to be one of the pillars of the herd for sure with a reported NR of 3@108. The cow has bred back first cycle every year and her calves always weigh up in the fall and maintain a calm, easy temperament. I retained her bull calf the previous year as a herd sire and he has not disappointed at all.





# 15 Rockin L Cortez J34

20258971 | calved: 03/02/21

O C C BIG TIME 746Z  
**O C C CORTEZ 819C**  
 O C C DIXIE ERICA 680W

CIRCLE L GUS  
**ROCKIN L LASS 705**  
 DTC LASS 1207

O C C REAR END 751R  
 O C C DIXIE ERICA 771R  
 O C C PAXTON 730P  
 O C C DIXIE ERICA 903E

S CHISUM 6175  
 CIRCLE L PRIDE X097  
 MYTTY IN FOCUS  
 DTC LASS 935

Birth Wt | 89  
 Wean Wt | 633  
 205 Wt | 608  
 365 Wt |

CED	BW	WW	YW	Milk	SC	Marb	RE	Fat	\$F	\$B
+2	+3.1	+60	+105	+18	+1.44	+0.28	+0.52	+0.032	+82	+113



# 13 Rockin L Gus J35

+20258959 | calved: 03/02/21

S CHISUM 6175  
**CIRCLE L GUS**  
 CIRCLE L PRIDE X097

DTC TRAVELER U30  
**LUND TRAVELER 0103**  
 CIRCLE L GEORGINA 5529

S ALLIANCE 3313  
 S GLORIA 464  
 HARB PENDLETON 765 J H  
 CIRCLE L PRIDE 38T

S A V 8180 TRAVELER 004  
 OX BOW PRIDE 486  
 SITZ ALLIANCE 9800  
 LEACHMAN GEORGINA 9352

Birth Wt | 82  
 Wean Wt | 654  
 205 Wt | 612  
 365 Wt |

CED	BW	WW	YW	Milk	SC	Marb	RE	Fat	\$F	\$B
+4	+2.3	+56	+93	+19	+0.69	+0.25	+0.48	+0.022	+98	+129



The first of the embryo calves offered. They are all going to be moderately framed. Full brother to Lot 19 and Lot 33.



# 16 SMA Whiplash

20247435 | calved: 01/24/21

CONNEALY BLACK GRANITE  
**BOBCAT BLACK DIAMOND**  
 BOBCAT ERICA 870

AB-LVS CAPITALIST 4507  
**SMA LADY MAY 910**  
 KR LADY MAY 3348

CONNEALY CONSENSUS 7229  
 EURA ELGA OF CONANGA 9109  
 BALDRIDGE NEBRASKA 901  
 VERMILION ERICA 0418

CONNEALY CAPITALIST 028  
 AB-LVS EMMA 096  
 JAF OVER THE LIMIT 14U  
 THOENE SANDHILLER H14

Birth Wt | 83  
 Wean Wt | 695  
 205 Wt | 702  
 Year Wt | 1225

CED	BW	WW	YW	Milk	SC	Marb	RE	Fat	\$F	\$B
+6	+2.2	+66	+115	+25	na	na	na	na	+85	na

This is the only bull we kept out of a first calf heifer and he is a whopper who has caught our eye all year. He's out of a beautiful Capitalist 4507 out of one of our stellar Pathfinder cows. He weaned off the cow at just under 700 pounds and ratioed 111- this is a true ratio against the whole herd, not just the heifers.



# 14 Rockin L Patriarch J18

20276299 | calved: 02/20/21

S S NIAGARA Z29  
**TEHAMA PATRIARCH F028**  
 TEHAMA ELITE BLACKBIRD D826

S A F STRATEGY 9015  
**DTC BLANCHE 9117**  
 OX BOW BLANCHE 801

HOOVER DAM  
 JET S S X144  
 CONNEALY THUNDER  
 TEHAMA ELITE BLACKBIRD Z630

S A F FOCUS OF E R  
 S A F ROYAL QUEEN 5084  
 TC DIVIDEND 963  
 BAND BLANCH H 5102 E A R

Birth Wt | 69  
 Wean Wt | 676  
 205 Wt | 637  
 365 Wt |

CED	BW	WW	YW	Milk	SC	Marb	RE	Fat	\$F	\$B
+18	-4.2	+52	+110	+36	+2.02	+0.98	+0.56	+0.034	+99	+162



Big time heifer bull. Dam has earned herself a spot as a flush cow for us with Birth ratios of 10@93 and Weaning Ratio of 10@106.

# 17 SMA Black Diamond 128

20247451 | calved: 02/03/21

CONNEALY BLACK GRANITE  
**BOBCAT BLACK DIAMOND**  
 BOBCAT ERICA 870

MOGCK BULLSEYE  
**KR MONTANA 3413**  
 WK MONTANA 1335

CONNEALY CONSENSUS 7229  
 EURA ELGA OF CONANGA 9109  
 BALDRIDGE NEBRASKA 901  
 VERMILION ERICA 0418

MOGCK SURE SHOT  
 MOGCK MARY 1255  
 VAR ROCKY 80029  
 WK MONTANA 8267

Birth Wt | 87  
 Wean Wt | 720  
 205 Wt | 674  
 Year Wt | 1260

CED	BW	WW	YW	Milk	SC	Marb	RE	Fat	\$F	\$B
+7	+1.7	+60	+111	+29	+0.90	+0.64	+0.55	+0.024	+96	+144

Here is your heifer bull out of Black Diamond and a Bullseye Daughter. I bred a few cows to Black Diamond in the spring of 2020. We've used him in the past and really liked the combination on our cows. The two Black Diamond bulls that were at the feedlot averaged 4.5 pounds per day in January.

# 18 SMA Renown 115

20185913 | calved: 01/21/21

RITO 707 OF IDEAL 3407 7075 <b>SAV RENOWN 3439</b> S A V BLACKCAP MAY 4136	R R RITO 707 IDEAL 3407 OF 1418 076 S A V 8180 TRAVELER 004 S A V MAY 2397	Birth Wt   <b>88</b>
S A V BRAND NAME 9115	S A V BISMARK 5682 S A V BLACKCAP MAY 5530	Wean Wt   <b>680</b>
<b>AB-LVS LAKOTA 243</b> AB LVS RIGHT LAKOTA 643	LEACHMAN RIGHT TIME V A ALVITA 916	205 Wt   <b>616</b>
		Year Wt   <b>1185</b>

CED	BW	WW	YW	Milk	SC	Marb	RE	Fat	SF	SB
+1	+2.6	+58	+109	+21	+34	-.05	+.57	+.015	+82	+101

Every great herd bull is backed by a tremendous cow family and this bull has it. She comes from one of the strongest cow families in our herd. This Brand Name female goes back to the legendary Leachman Right Time and adds a maternal edge for anyone that keeps their own replacement heifers. Pack that with the punch of the famous SAV Renown and you have an unstopable herd bull prospect.

# 19 Rockin L Gus J26

+20258960 | calved: 02/25/21

S CHISUM 6175 <b>CIRCLE L GUS</b> CIRCLE L PRIDE X097	S ALLIANCE 3313 S GLORIA 464 HARB PENDLETON 765 J H CIRCLE L PRIDE 38T	Birth Wt   <b>81</b>
DTC TRAVELER U30	S A V 8180 TRAVELER 004 OX BOW PRIDE 486	Wean Wt   <b>642</b>
<b>LUND TRAVELER 0103</b> CIRCLE L GEORGINA 5529	SITZ ALLIANCE 9800 LEACHMAN GEORGINA 9352	205 Wt   <b>593</b>
		365 Wt

CED	BW	WW	YW	Milk	SC	Marb	RE	Fat	SF	SB
+14	-0.9	+37	+61	+26	+.76	+.13	+.13	+.056	+59	+77

Flush brother to Lot 13 and Lot 33.



# 22 SMA Real Deal 100

20184663 | calved: 01/11/21

MUSGRAVE SKY HIGH 1535 <b>MUSGRAVE FEATURE</b> MUSGRAVE PRIDE 1416-166	MUSGRAVE BIG SKY FLAG QUEEN W 00649 MOGCK BULLSEYE WATERS PRIDE ROSE 166	Birth Wt   <b>86</b>
SPA HOOVER DAM 019	HOOVER DAM SPA 7145 OF 242 X FD	Wean Wt   <b>710</b>
<b>SPA 3154 OF 3041 X HD 019</b> LCC MARATHON K3041	B A R EXT TRAVELER 205 LEACHMAN MARATHON G3044	205 Wt   <b>629</b>
		Year Wt   <b>1150</b>

CED	BW	WW	YW	Milk	SC	Marb	RE	Fat	SF	SB
+6	+0.4	+46	+77	+28	+.81	+.47	+.43	+.016	+66	+106

This is your heifer bull right here. This bull has been a born performer from the start. He has been turning heads from day one and hasn't stopped. His moderate frame dam, has always bred back first cycle and puts far more than 50% of her body weight out every single fall. She's been one of the most efficient dams on the place.



# 20 Rockin L Upward J44

20258948 | calved: 03/05/21

SITZ UPWARD 307R <b>ROCKIN L UPWARD Z238</b> BALDRIDGE BLACKBIRD N128	CONNEALY ONWARD SITZ HENRIETTA PRIDE 81M WOODHILL COMBO 344-626 BALDRIDGE BLACKBIRD 217H	Birth Wt   <b>88</b>
QUAKER HILL RAMPAGE 0A36	MCC DAYBREAK QHF BLACKCAP 6E2 OF4V16 4355	Wean Wt   <b>680</b>
<b>ROCKIN L LASS 742</b> DTC LASS 116	MYTTY IN FOCUS BAR LASS L627	205 Wt   <b>657</b>
		365 Wt

CED	BW	WW	YW	Milk	SC	Marb	RE	Fat	SF	SB
+1	+2.5	+58	+104	+28	+1.83	+.38	+.46	+.018	+98	+135



# 23 SMA Stamina

20184659 | calved: 01/19/21

MUSGRAVE SKY HIGH 1535 <b>MUSGRAVE FEATURE</b> MUSGRAVE PRIDE 1416-166	MUSGRAVE BIG SKY FLAG QUEEN W 00649 MOGCK BULLSEYE WATERS PRIDE ROSE 166	Birth Wt   <b>84</b>
KOUPALS B&B IDENTITY	SITZ UPWARD 307R B&B ERICA 605	Wean Wt   <b>705</b>
<b>KR ANN 3024</b> WK ANN 0339	GENETICS BY DESIGN 049 D 300 ANN T7170	205 Wt   <b>635</b>
		Year Wt   <b>1180</b>

CED	BW	WW	YW	Milk	SC	Marb	RE	Fat	SF	SB
+6	+1.4	+59	+104	+25	+.83	+.62	+.50	+.027	+86	+133

This big stout Feature son could be used on cows or larger framed heifers. He adds calving ease without sacrificing growth. This cow has maintained flesh during the toughest of years and should pass that feed efficiency onto her calves.

# 21 Rockin L Front & Center J05

20258967 | calved: 02/17/21

KESSLERS FRONTMAN R001 <b>CONNEALY FRONT &amp; CENTER</b> JAIS OF CONANGA 9585	CONNEALY FRONT PAGE 0228 KESSLERS BELL 0024 CONNEALY RIGHT ANSWER 746 JAISE OF CONANGA 4660	Birth Wt   <b>65</b>
SPRING COVE CROSSBOW	KM BROKEN BOW 002 SPRING COVE PRETTY 205	Wean Wt   <b>521</b>
<b>ROCKIN L BEEBE QUEEN 901</b> ROCKIN L BEEBE QUEEN 733	CIRCLE L GUS OX BOW BEEBE QUEEN 5114	205 Wt   <b>540</b>
		365 Wt

CED	BW	WW	YW	Milk	SC	Marb	RE	Fat	SF	SB
+12	-0.3	+48	+89	+29	+.48	+.75	+.65	-.001	+67	+123

Heifer bull. Certified Angus Beef Stamp.



# 24 SMA Feature 119

20184669 | calved: 01/27/21

MUSGRAVE SKY HIGH 1535 <b>MUSGRAVE FEATURE</b> MUSGRAVE PRIDE 1416-166	MUSGRAVE BIG SKY FLAG QUEEN W 00649 MOGCK BULLSEYE WATERS PRIDE ROSE 166	Birth Wt   <b>85</b>
JAF OVER THE LIMIT 14U	EXAR PIT BOSS 409 BT POLLY 54L	Wean Wt   <b>640</b>
<b>KR LADY MAY 3348</b> THOENE SANDHILLER H14	THOENE SANDHILLER THOENE TRAVELER 004-563	205 Wt   <b>589</b>
		Year Wt   <b>1110</b>

CED	BW	WW	YW	Milk	SC	Marb	RE	Fat	SF	SB
+0	+2.4	+56	+96	+23	+.98	+.59	+.32	+.029	+80	+123

Another feature son out of one of Pathfinder cows. She has been one of the best additions to our herd over the years. He's one of the more moderate frame bulls in the sale, weighing just over 1100 pounds in January, but packs the weight in a smooth pattern across a thick frame.





# 31 Rockin L Down Payment J65

20258949 | calved: 03/13/21

EF COMPLEMENT 8088  
**ROCKIN L DOWN PAYMENT C35**  
 DTC JESSIE 9119

ROCKIN L THUNDERBIRD A47  
**ROCKIN L POLY 588**  
 ROCKIN L POLY 353

BASIN FRANCHISE P142  
 EF EVERLEDA ENTENSE 6117  
 G A R PREDESTINED  
 HOS BIG ELBAN'S JESSIE 5061  
 S A V THUNDERBIRD 9061  
 LUND EMMA 959  
 SITZ RAINMAKER 11127  
 DTC POLY 633

Birth Wt | **77**  
 Wean Wt | **626**  
 205 Wt | **605**  
 365 Wt |

CED	BW	WW	YW	Milk	SC	Marb	RE	Fat	SF	SB
+10	-2.1	+41	+85	+37	+4.3	+0.89	+0.32	+0.048	+61	+115

Heifer bull



# 32 SMA Charlie 151

20184661 | calved: 03/02/21

BUSHS TUNDRA 602  
**SMA TUNDRA 941**  
 KR LADY CASH 6302

ER JUSTICE N013  
**ICC EVERLEDA ENTENSE 1832**  
 ICC EVERLEDA ENTENSE 8530

BASIN EXCITEMENT  
 BUSHS LADY TIMELESS 2850  
 KRAMERS APOLLO 317  
 WK LADY CASH 0270  
 ER FALCON K177  
 JR HENRIETTA 001L  
 SITZ ALLIANCE 6595  
 ER EVERLEDA ENTENSE K251

Birth Wt | **84**  
 Wean Wt | **670**  
 205 Wt | **705**  
 Year Wt | **1140**

CED	BW	WW	YW	Milk	SC	Marb	RE	Fat	SF	SB
+4	+2.2	+67	+112	+27	na	na	na	na	+81	na

One of two bulls offered out of a Busch's Tundra son we raised. This particular bull is out of a tremendous pathfinder cow, purchased at the Stars of Montana Sale in December of 2016. He is one that will surely catch your eye as you step into the pen. His dam reports 9 NR @ 106. As you can tell, this cow doesn't skip a beat.

# 33 Rockin L Gus J20

+20258961 | calved: 02/22/21

S CHISUM 6175  
**CIRCLE L GUS**  
 CIRCLE L PRIDE X097

DTC TRAVELER U30  
**LUND TRAVELER 0103**  
 CIRCLE L GEORGINA 5529

S ALLIANCE 3313  
 S GLORIA 464  
 HARB PENDLETON 765 J H  
 CIRCLE L PRIDE 38T  
 S A V 8180 TRAVELER 004  
 OX BOW PRIDE 486  
 SITZ ALLIANCE 9800  
 LEACHMAN GEORGINA 9352

Birth Wt | **80**  
 Wean Wt | **564**  
 205 Wt | **518**  
 365 Wt |

CED	BW	WW	YW	Milk	SC	Marb	RE	Fat	SF	SB
+8	+1.3	+55	+94	+23	+0.38	-0.01	+0.53	+0.030	+95	+114

Flush Brother to Lot 13 and Lot 19



# 34 Commercial

commercial | calved: 3/14/2021

BUSHS TUNDRA 602  
**SMA TUNDRA 941**  
 KR LADY CASH 6302

BASIN EXCITEMENT  
 BUSHS LADY TIMELESS 2850  
 KRAMERS APOLLO 317  
 WK LADY CASH 0270

Birth Wt | **85**  
 Wean Wt | **690**  
 205 Wt | **na**  
 Year Wt | **1085**

CED	BW	WW	YW	Milk	SC	Marb	RE	Fat	SF	SB
na	na	na	na	na	na	na	na	na	na	na

This is a commercial bull- the second son out of the Busch's Tundra son we raised. One of the younger bulls with a more moderate frame, without sacrificing muscle mass.

# 35 Commercial Bull J22

commercial | calved: 02/23/21

UNKNOWN SIRE

ROCKIN L UPWARD Z231  
**ROCKIN L BLACKBIRD 777**  
 ROCKIN L BLACKBIRD 357

ROCKIN L UPWARD 231  
 DTC POLY 633  
 V D A R REALLY WINDY 4097  
 DTC BLACKBIRD 969

Birth Wt | **100**  
 Wean Wt | **665**



# 36 SMA Resource 150

20184667 | calved: 02/28/21

S A V RESOURCE 1441  
**LEACHMAN RESOURCE 8566**  
 LEACHMAN BLACKCAP 1046

WK BAR NONE 9086  
**KR LUCY ROSE 3556**  
 WK LUCY ROSE 6427

RITO 707 OF IDEAL 3407 7075  
 S A V BLACKCAP MAY 4136  
 TC ABERDEEN 759  
 LEACHMAN BLACKCAP 6009  
 LEMAR WINDY 435  
 WK ERICA 6309  
 BON VIEW NEW DESIGN 1407  
 WK LUCY ROSE 4329

Birth Wt | **85**  
 Wean Wt | **610**  
 205 Wt | **617**  
 Year Wt | **1125**

CED	BW	WW	YW	Milk	SC	Marb	RE	Fat	SF	SB
+6	+1.5	+59	+108	+25	+1.13	+0.49	+0.66	+0.015	+91	+134

This bull is packing a huge punch when you look at him. He's got a solid structure holding up a smooth, well-muscled, thick body. He's got a ton of eye appeal, like the rest of the Leachman Resource sons, but with maybe a little more flash.

# 37 Commercial Bull 184

commercial | calved: 03/21/21



Birth Wt | **88**  
 Wean Wt | **562**

# 38 SMA Resource 132

20184665 | calved: 02/06/21

S A V RESOURCE 1441  
**LEACHMAN RESOURCE 8566**  
 LEACHMAN BLACKCAP 1046

JAF OVER THE LIMIT 14U  
**KR PRINCESS TEE 2929**  
 THOENE LEAD ON 529

RITO 707 OF IDEAL 3407 7075  
 S A V BLACKCAP MAY 4136  
 TC ABERDEEN 759  
 LEACHMAN BLACKCAP 6009  
 EXAR PIT BOSS 409  
 BT POLLY 54L  
 CONNEALY LEAD ON  
 THOENE HI FLYER 892

Birth Wt | **86**  
 Wean Wt | **585**  
 205 Wt | **553**  
 Year Wt | **1080**

CED	BW	WW	YW	Milk	SC	Marb	RE	Fat	SF	SB
+0	+2.5	+50	+95	+22	+0.98	+0.33	+0.54	+0.001	+89	+125

Our final bull of the sale with nice calm temperament and plenty of thickness- just no ears on this one either. Not all days last winter were beautiful and he's proof that calves are resilient and can flourish in all kinds of weather.



# 39 Donation Heifer

Rockin L Genetics is pleased to offer Rockin L Barbaramere Jet 124. We are sad to let this gal go, but are excited for her to be added as a great dam to your program!

Central Montana experienced many pains last year, but nothing greater than the loss of a child. Two wonderful families lost their sons. We continue to hold these families in our hearts and our prayers. Rockin L Genetics has decided to donate 50% of the proceeds to split between these two amazing families.

## 39 Rockin L Barbaramere Jet 124

Cow   20258963   calved: 02/20/21		
S CHISUM 6175	S ALLIANCE 3313	
<b>CIRCLE L GUS</b>	S GLORIA 464	Birth Wt   76
CIRCLE L PRIDE X097	HARB PENDLETON 765 J H	Wean Wt   615
	CIRCLE L PRIDE 38T	205 Wt
MYTTY IN FOCUS	S A F FOCUS OF E R	365 Wt
<b>DTC BARBARAMERE JET 1220</b>	MYTTY COUNTESS 906	
DTC JET 997	WOODHILL FORESIGHT	
	OX BOW BARBARAMERE JET 5150	
<b>CE</b>	<b>BW</b>	<b>WW</b>
<b>YV</b>	<b>Milk</b>	<b>SC</b>
<b>Marb</b>	<b>RE</b>	<b>Fat</b>
<b>\$F</b>	<b>\$B</b>	
+11	+0.1	+60
+107	+24	+1.26
+40	+60	+0.047
+111	+147	



**Wyatt Weir** was a 4th grader at Our Lady of Lourdes Catholic School. He was a cowboy through and through; enjoying kid rodeos, time spent on the back of his horse and shooting gophers. He was a loving big brother to Weston & Wakely. He was an outdoor lover and one heck of a fire starter.

Wyatt leaves behind his mom; Jen, brother & sister and tons of family. Wyatt and his Dad; Tyler went to their heavenly home together. 25% of the proceeds will be donated to the Grass Range Rodeo Club as a memorial in Wyatt's name.

**Dylan Morris** was a senior at Fergus High and a standout athlete as well as an amazing young man. He had an infectious personality, a love for the outdoors and was a kind soul to all he met. His smile could light up a room and always left those around him laughing.

Dylan leaves behind his parents; Brandon & Crista and siblings Emily, Adysen & Colter as well as lots of family. 25% of the proceeds will be set up in a scholarship fund for Dylan's sisters and brother or to a memorial of the family's choosing.

### A Special Thank You to:

**Kyle Shobe • Andy Rest • Jay Rost**

**Lewistown Livestock Auction**

*Kyle & Jodie Shobe & Crew*

**The Grove Families**

*Jeremy & Amanda, Greg & Karen and Taylor Jones*

**Hubbard Feeds**

*Calvin Bacon & Josh Stroh*

**Clear Creek Veterinary**

*Dr. Logan Potts*

**Hughes Veterinary Services**

*Laurie Gaugler, DVM*

**Sid Bar Cattle**

**Mike Vanek**

**Ballyhoo Printing & Design**

**All of our family and friends**



Justin (J.R.) & Katie Lund  
PO Box 42  
Winnett, MT 59087

**FIRST CLASS**

US Postage  
Paid  
Ballyhoo Printing  
59457

**FIRST CLASS**



J.R. & Katie Lund  
406-350-1059  
406-951-0212  
rockinLgenetics@hotmail.com



Theresa Abegglen  
406-366-0292 or 406-374-2222  
ffatheresal@yahoo.com

**TUESDAY** *Make plans to join us!*  
**MARCH 22 2022**

Lewistown Livestock Yards | Lewistown, MT  
Lunch • Noon | Sale • 1 p.m.

**DVAuction**