



## 86" Double-Sided Outdoor LCD Sign



### **Model: NILDK-860PC-106, Portrait**

- ✓ 86" Outdoor 3000cd Sunlight readable high brightness LCD screen
- ✓ Tamper-proof, anti-reflection, tampered glass
- ✓ Embedded computer, heater, ventilation system
- ✓ Remote hardware maintenance module
- ✓ Heavy duty custom vandal proof enclosure

## Screen

Parameter	Specification
Video Orientation	Landscape
Screen Dimensions (W x H)	1066mm x 1896mm; (42.0in. x 74.6in.)
Enclosure Dimensions (W x H x D)	1340mm x 2189mm x 297mm; (52.8in. x 86.2in. x 11.7in.)
Resolution	3840 x 2160 pixels
Color	1.07 billion colors (10-bit)
Dimming	50-100% automatic dimming
Calibrated Intensity	3000 Cd/m <sup>2</sup>
Color Temperature Modes	Warm / Medium / Cool
Refresh Rate	60 Hz
Contrast Ratio	2,000:1 (Typical); 10,000:1(DCR)
Viewing Angle	178 degrees (side/side) 178 degrees (up/down)
Calibration	At factory or via rs232c

## Power, Computer & Electronics

Parameter	Specification	
Power Consumption	1800 W (Typical);	
Embedded computer	CPU	Intel Core i7 3337U(1.8GHz/Dual-Core)
	RAM	DDR3 4GB
	Storage	64GB
	Dimensions (W x D x H)	150mm x 50mm x 150 (5.9in x 2in x 5.9in)
	OS	Windows 10
Inputs / Outputs	PC Input via 15-Pin Sub "D" 1 Composite Video Input 1 DVI :720p/1080i/1080p RS-232C Input Female-to- Female Crossed Type External Speaker Out LAN:1Gbps	
On Screen Display (OSD)	English (default)	
Hardware Maintenance Software	Installed networking module to control hardware	

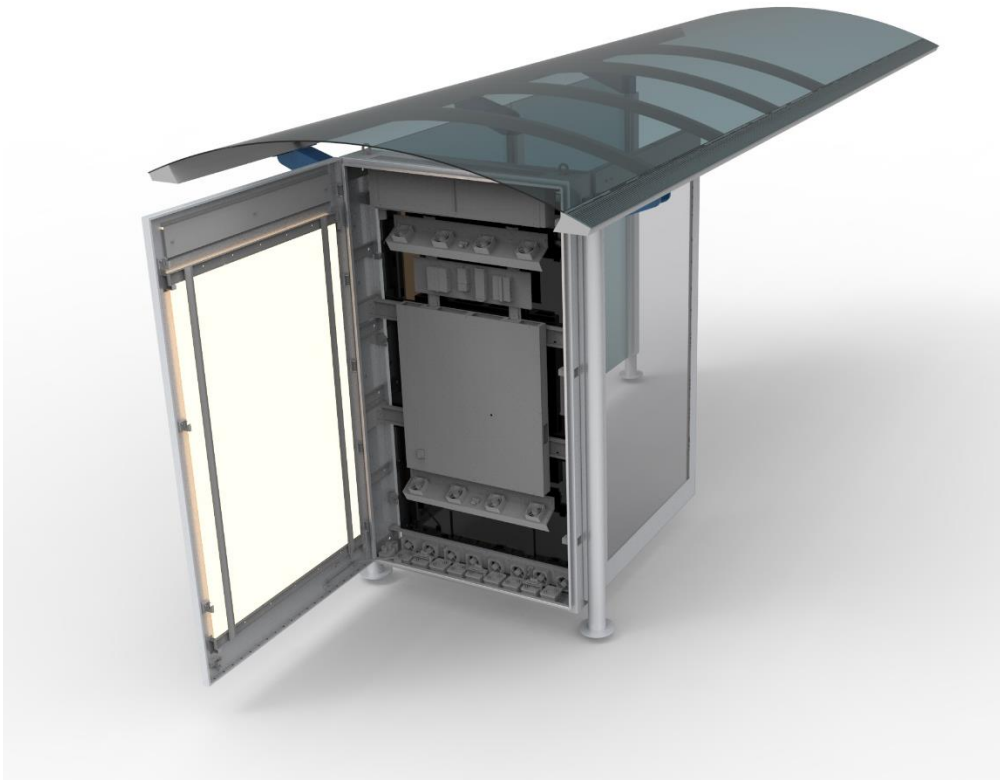
## System Level Design & Durability

Parameter	Specification
Rated Operating Conditions	Temperature: -40°C to +50°C Humidity: 20% to 80%
Heating, Ventilation & Air Circulation (HVAC)	Automated system for heating & cooling with active air inflow & exhaust
External Housing	Fully-sealed, weather-proof enclosure Powder coated surface treatment
Glass	Anti-vandal, anti-reflection, tempered glass
Compliance	UL48 - Input Test - Normal Temperature Test - Dielectric Voltage Withstand Test - Bond Impedance Test - Leakage Current Test - Abnormal Operation Test: - Maximum Output Voltage Test: - Maximum Output Current and Power Test - Glass Impact Test - Locked Rotor Test - Rain Test UL879 Nanov Controller Sign UL609650 LCD Panel Compliance

Parameter	Specification
Warranty	36 Months
Mean Time Between Failure	50,000 hours
<p>KIOSK Health Maintenance Module (Remote hardware control board)</p> <p>[Model: NRMCB-10]</p>	<p>Remote capabilities:</p> <ul style="list-style-type: none"> <li>- Control internal temperature using fan speed</li> <li>- Adjust screen brightness</li> <li>- Screen power on/off</li> <li>- Computer power on/off</li> <li>- Analog-Digital board on/off</li> <li>- Pixel moving detection sensor when the screen does not move pixel</li> <li>- Alarm Management</li> <li>- Three months monitoring service included</li> <li>- Sensor Diagnostic Logs</li> </ul>

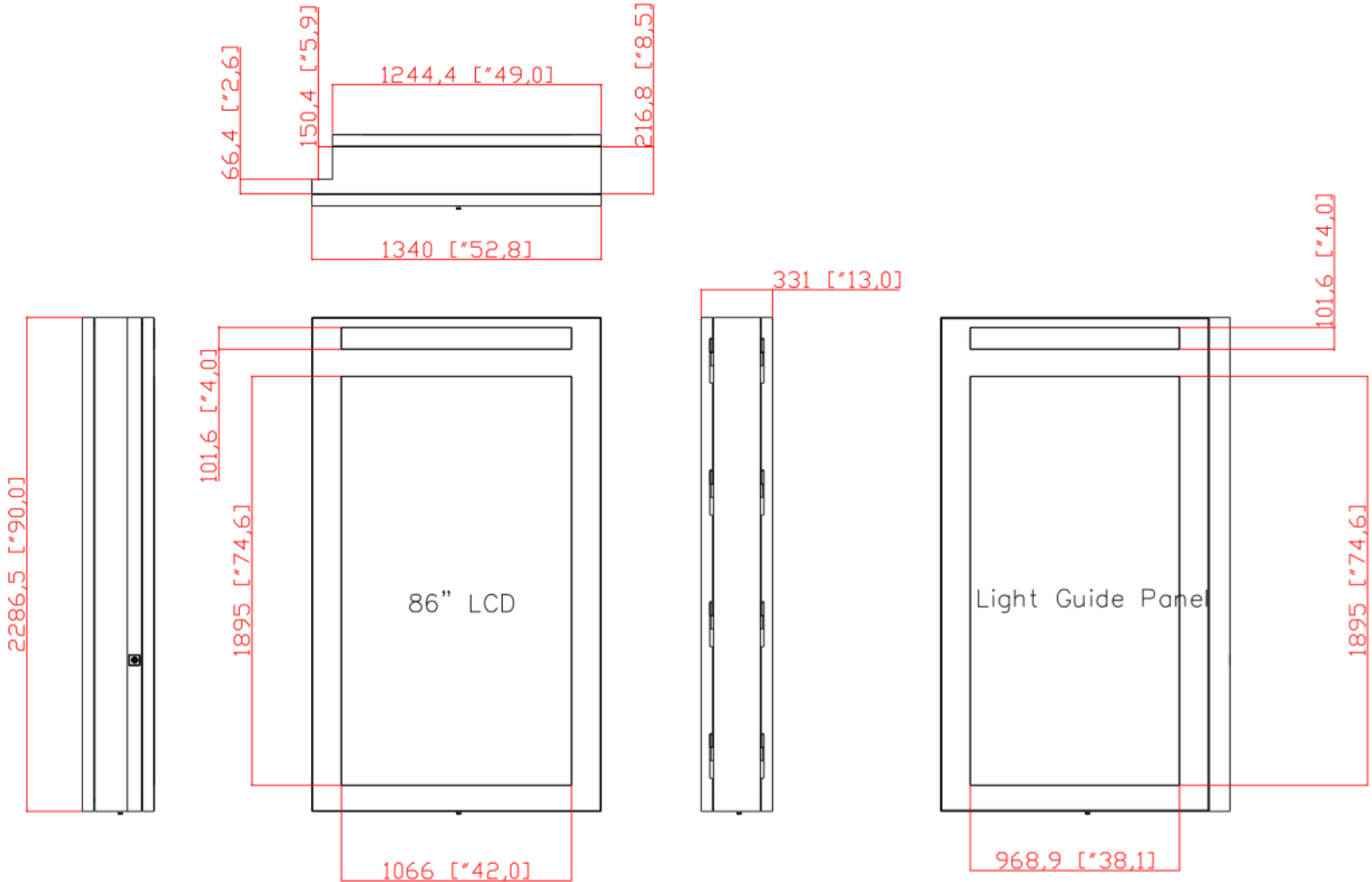
## Maintenance Door Concept

This Nanov Display product is designed with easy maintenance access in mind. You can swing open the enclosure door to access the monitor in no time at all. Next, to access the electronics directly, the screen can pivot upwards thanks to its mounting with heavy-duty pneumatic spring.



# Physical Dimensions

Total System Weight: 350 kg (772 lb.) per unit



## NILDK-860PC-106 Design 1 Concept Drawing







## **NANOV DISPLAY INC.**

141 Flushing Avenue, Suite 705

Brooklyn, NY 11205

[www.nanov.info](http://www.nanov.info)

Tel: 1-877 408-9944 Fax: 866 431-7242