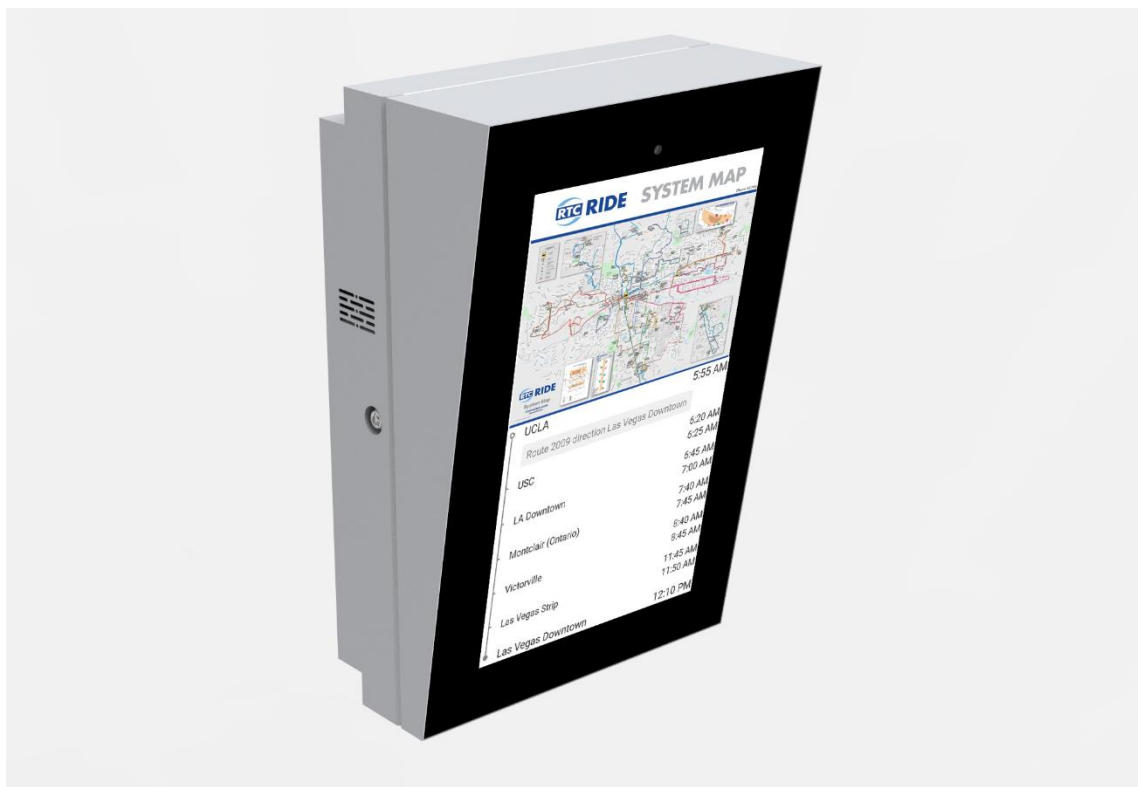




32" Outdoor Single-sided Interactive Touch PIDS Portrait, Tilted



Model: NIASM-320PC-224-LAS, Portrait, Single-sided

- ✓ Tamper-proof, anti-reflection, tempered glass over 32" screen
- ✓ Daylight readable, full high definition 1920 x 1080 pixels
- ✓ UL48 LCD Outdoor signs certified, UL879 Sign controller certified
- ✓ 3M IR film to block sunlight solar energy
- ✓ Option: Remote Hardware Maintenance Module
- ✓ Powdered steel enclosure structure

Screen

Parameter	Specification
Video Orientation	Portrait
Screen Dimensions	392.85mm(width) x698.4mm(height) (27.5inches x 15.5inches)
Enclosure Dimensions	570mm(width) x 880mm(height) x 344mm(depth) (22.4inches x 34.6 inches x 13.57inches)
Resolution	1920 x 1080 pixels
Color	1.07 billion colors (10-bit)
Dimming	50-100% automatic dimming
Calibrated Intensity	1000 Cd/m ²
Color Temperature Modes	Warm / Medium / Cool
Refresh Rate	60 Hz
Contrast Ratio	2,000:1 (Typical); 10,000:1 (Dynamic)
Viewing Angle	178 degrees (side/side) 178 degrees (up/down)
Burn Time (one static image)	30 min

Power, Computer & Electronics

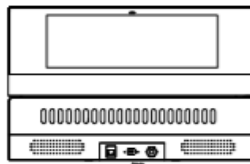
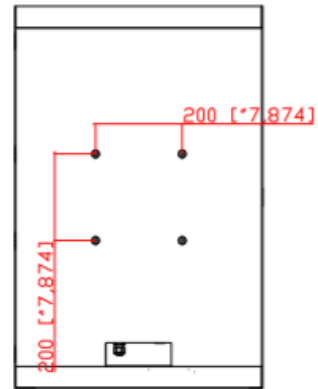
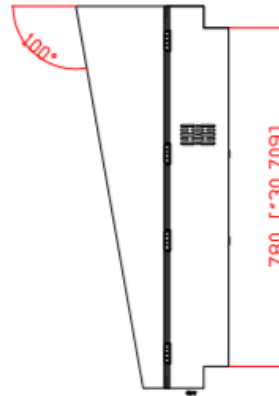
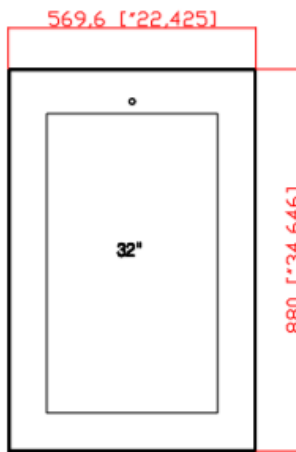
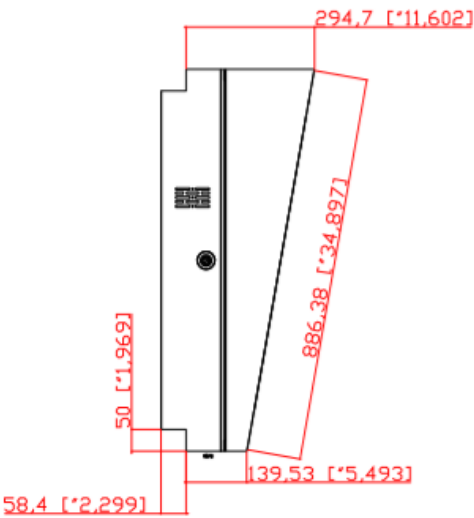
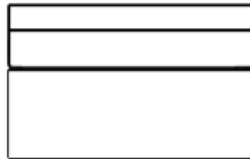
Parameter	Specification	
Power Consumption	270 W	
Embedded computer	CPU	Intel Core i5 processor
	RAM	DDR3 3GB
	Storage	SSD 64GB
	Dimensions (W x H x D)	150mm x 150mm x 50mm; (5.9inches x 5.9inches x 2.0inches)
	OS	Windows 10
Inputs / Outputs	HDMI DVI (720p/1080i/1080p) Composite Video Input PC Input via 15-pin LAN (RJ45, Cat 6) RS-232C	
On Screen Display (OSD)	English (default),	
Hardware Maintenance Software	Installed networking module to control hardware	

System Level Design & Durability

Parameter	Specification
Rated Operating Conditions	Temperature: -30°C to +45°C Humidity: 20% to 80%
Heating, Ventilation & Air Circulation (HVAC)	Automated system for heating & cooling with active air inflow & exhaust <i>[patent pending]</i>
External Housing	Fully-sealed, weather-proof enclosure Powder coated surface treatment Available finishing materials: Stainless steel, Aluminum, Architectural glass
Glass	Anti-vandal, tempered glass
Certification	FCC, CSA, Components UL
Warranty	36 Months
Mean Time Between Failure	50,000 hours
Electric Sign Health Monitoring System [Model: NRMCB-300]	Remote Health Monitoring capabilities: <ul style="list-style-type: none"> - Monitor internet connection - Environmental control via IoT sensors <ul style="list-style-type: none"> • (2) Temperature sensors • (1) Ambience sensor • (1) Moisture sensor • (1) Pixel moving sensor to detect screen is working or not • (1) Door sensor for enhanced security and safety - Sequential power booting program <ul style="list-style-type: none"> • Remote power reset • Remote computer reset • Remote LCD reset • Remote IoT reset

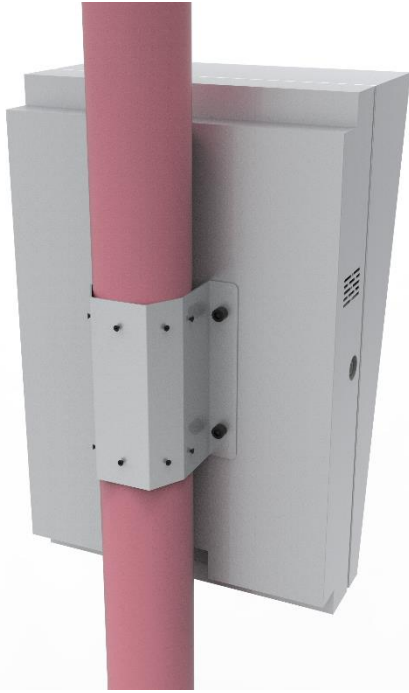
Physical Dimensions

Total System Weight: 50 kg. (110 lbs.) per unit



Concept Drawing – Speakers, Mount Concept, Input/Output Ports





NIASM-320PC-224-LAS Concept Drawing



Nanov Display Inc.

141 Flushing Ave Suite 705

Brooklyn, NY 11205

Tel: +1-877-409-8844, Fax: +1-866-431-7242

info@nanovdisplay.com