



## Outdoor Double-Sided Smart Cities Kiosk Interactive LCD Screen



### **Model: NISDK-550PC-105-EWR, 55" Double-Sided**

- ✓ Two 55" weatherproof/outdoor high brightness 2500cd LCD screen
- ✓ Tamper-proof, anti-reflection, tempered glass
- ✓ Projected capacitive 2 points zoom interactive Zytronic glass
- ✓ Remote maintenance and system health monitoring
- ✓ Fully sealed IP55 anti-erosion enclosure with maintenance door



## Proprietary Notice

The information disclosed herein contains proprietary rights of Nanov Display, Inc. (Nanov). Neither this document nor the information disclosed herein shall be reproduced or transferred to other documents. Nor shall the information be used or disclosed to others for manufacturing or any other purposes except as specifically authorized in writing by Nanov.

Copyright© 2020 Nanov Display, Inc. All rights reserved.

## Screen

Parameter	Specification
Video Orientation	Portrait
Active Screen Dimensions (Width x Height)	680mm x 1210 mm; (26.8in. x 47.6in.)
Enclosure Dimension (Width x Height x Depth)	892mm x 2640mm x 273mm; (35.1in. x 79.4in. x 10.8in.)
Resolution	1080 x 1920 pixels
Color	16.7 million colors (8-bit)
Dimming	50-100% automatic dimming
Calibrated Intensity	2500 Cd/m <sup>2</sup>
Color Temperature Modes	Warm / Medium / Cool
Refresh Rate	60 Hz
Contrast Ratio	1400:1
Viewing Angle	178 degrees (side/side) 178 degrees (up/down)
Burn Time (one static image)	30 min

## Power, Computers & Electronics

Parameter	Specification	
Power Consumption	1300 W (Average); 1500 W (Maximum)	
Embedded computer (One per each side)	CPU	Intel Core i5 1.8 GHz Dual Core
	RAM	16 GB
	Storage	256 GB
	Dimensions (W x D x H)	150mm x 50mm x 150 mm; (5.9in. x 2.0in. x 5.9in.)
	OS	Window or (Linux) Ubuntu 14.04 Server Ed.
Inputs / Outputs	HDMI DVI (720p/1080i/1080p) Composite Video Input PC Input via 15-pin Sub LAN (RJ45, Cat 6) RS-232C  Expandable per request: LTE Modem, Switcher, Wi-Fi Module	
On Screen Display (OSD)	English (default), French, Spanish	
Hardware Maintenance Software	Installed networking module to control hardware	

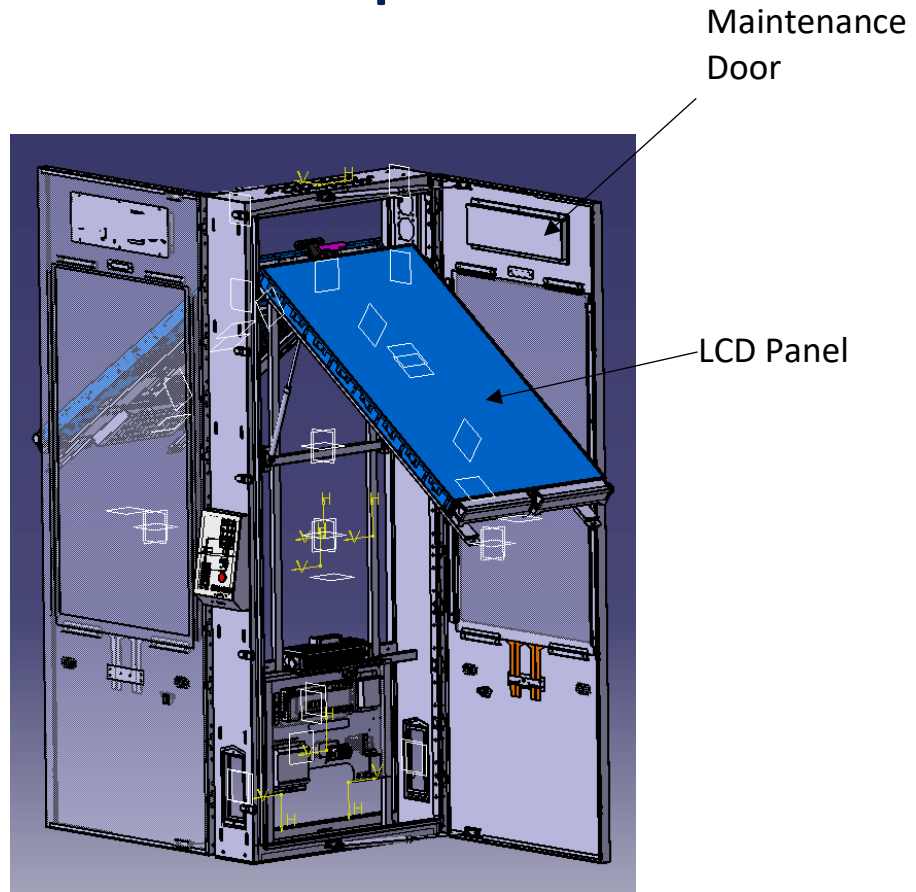
## System Level Design & Durability

Parameter	Specification
Rated Operating Conditions	Temperature: -30°C to +45°C Humidity: 20% to 80%
Heating, Ventilation & Air Circulation (HVAC)	Automated system for heating & cooling with active air inflow & exhaust <i>[patent pending]</i>
External Housing	Fully-sealed, weather-proof enclosure Powder coated surface treatment Available finishing materials: Stainless steel, Aluminum, Architectural glass
Glass	Anti-glare, 1% max haze, anti-vandal, tempered glass.
Audio	Two outdoor 10W speakers
Certification	FCC, UL48
Warranty	36 Months
Mean Time Between Failure	50,000 hours
KIOSK Health Maintenance Module (Remote hardware control board)  [Model: NRMCB-10]	Alarm management when environment control sensors detect abnormality Remote capabilities: <ul style="list-style-type: none"> <li>- Control internal temperature using fan speed</li> <li>- Adjust screen brightness</li> <li>- Screen power on/off</li> <li>- Computer power on/off</li> <li>- Analog-Digital board on/off</li> <li>- Pixel moving detection sensor when the screen does not move pixel</li> <li>- Alarm Management</li> <li>- Sensor Diagnostic Logs</li> </ul>

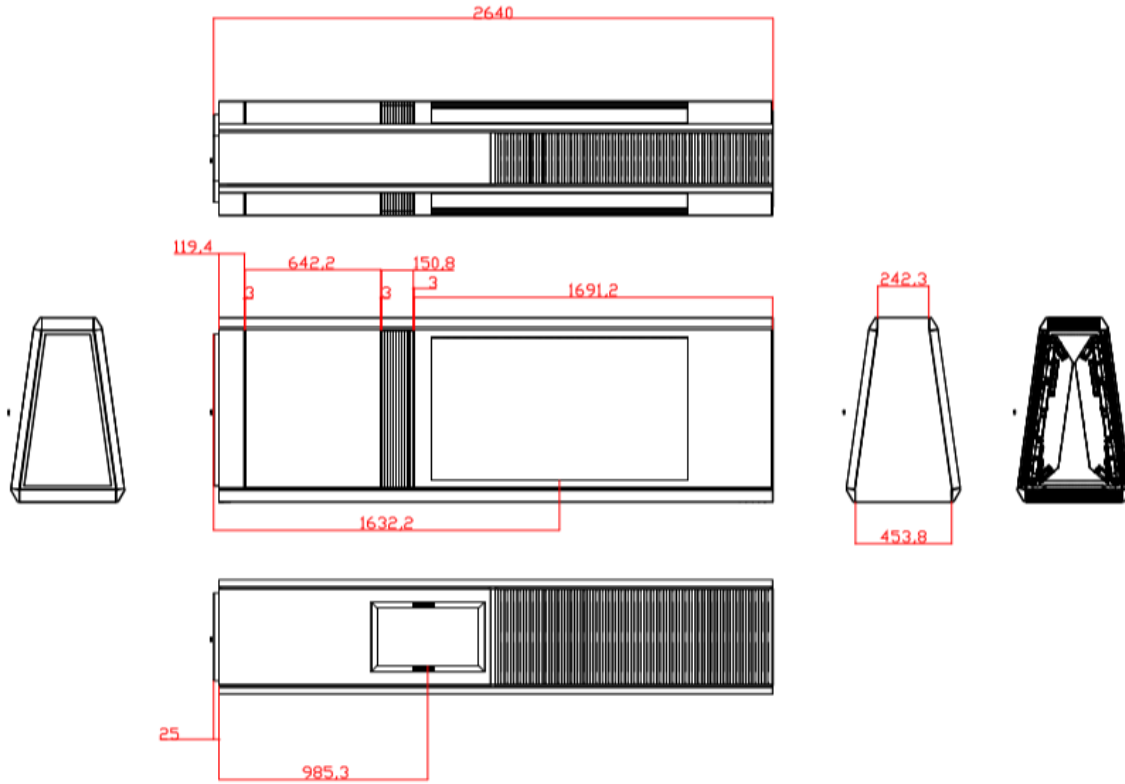
## Qualification

Parameter	Project Experiences
PIDS outdoor LCD signs project references	<ul style="list-style-type: none"> <li>• Calgary transit system</li> <li>• City of Little Rock, Arkansas</li> <li>• Montgomery county in Maryland</li> <li>• Sheridan College</li> <li>• City of Newark, New Jersey</li> </ul>
Compliance	<ul style="list-style-type: none"> <li>• North America Electrical code</li> <li>• State of Florida Wind load codes</li> <li>• Americans with disabilities act accessibility guidelines</li> <li>• UL, Canada UL listing: UL48 Outdoor LCD sign UL879 LCD electric sign controller</li> </ul>
QC/Maintenance program	<ul style="list-style-type: none"> <li>• FAT report</li> <li>• Remote LCD signs health maintenance program: Alarm management via email &amp; text</li> <li>• Emergency maintenance networking</li> <li>• Auto environmental controls thru sensors report.</li> <li>• Repair parts at Miami service depot.</li> <li>• Factory maintenance program available in the State of Florida</li> </ul>
Buy USA provision	<ul style="list-style-type: none"> <li>• Outdoor interactive LCD signs structure</li> </ul>
Warranty and maintenance center	<ul style="list-style-type: none"> <li>• Miami, Florida</li> <li>• Brooklyn, New York</li> <li>• Toronto, Ontario</li> </ul>

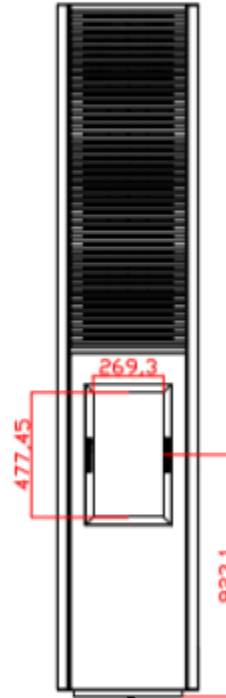
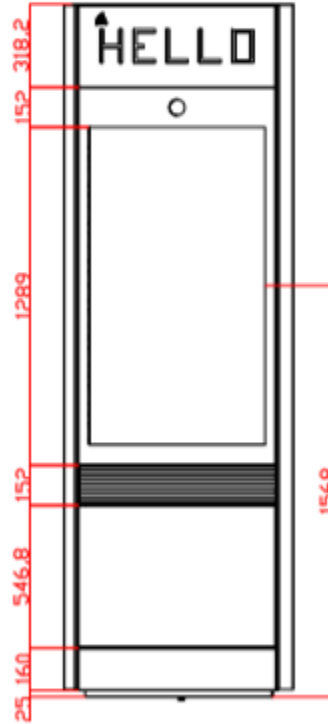
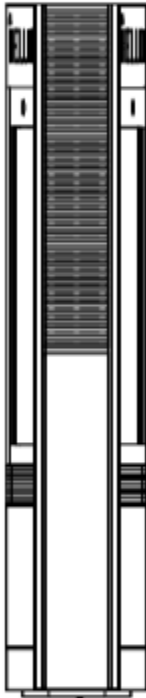
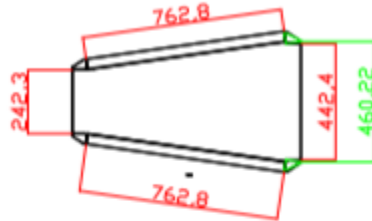
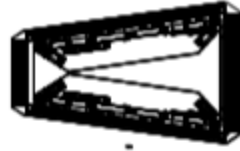
## Maintenance Door Concept



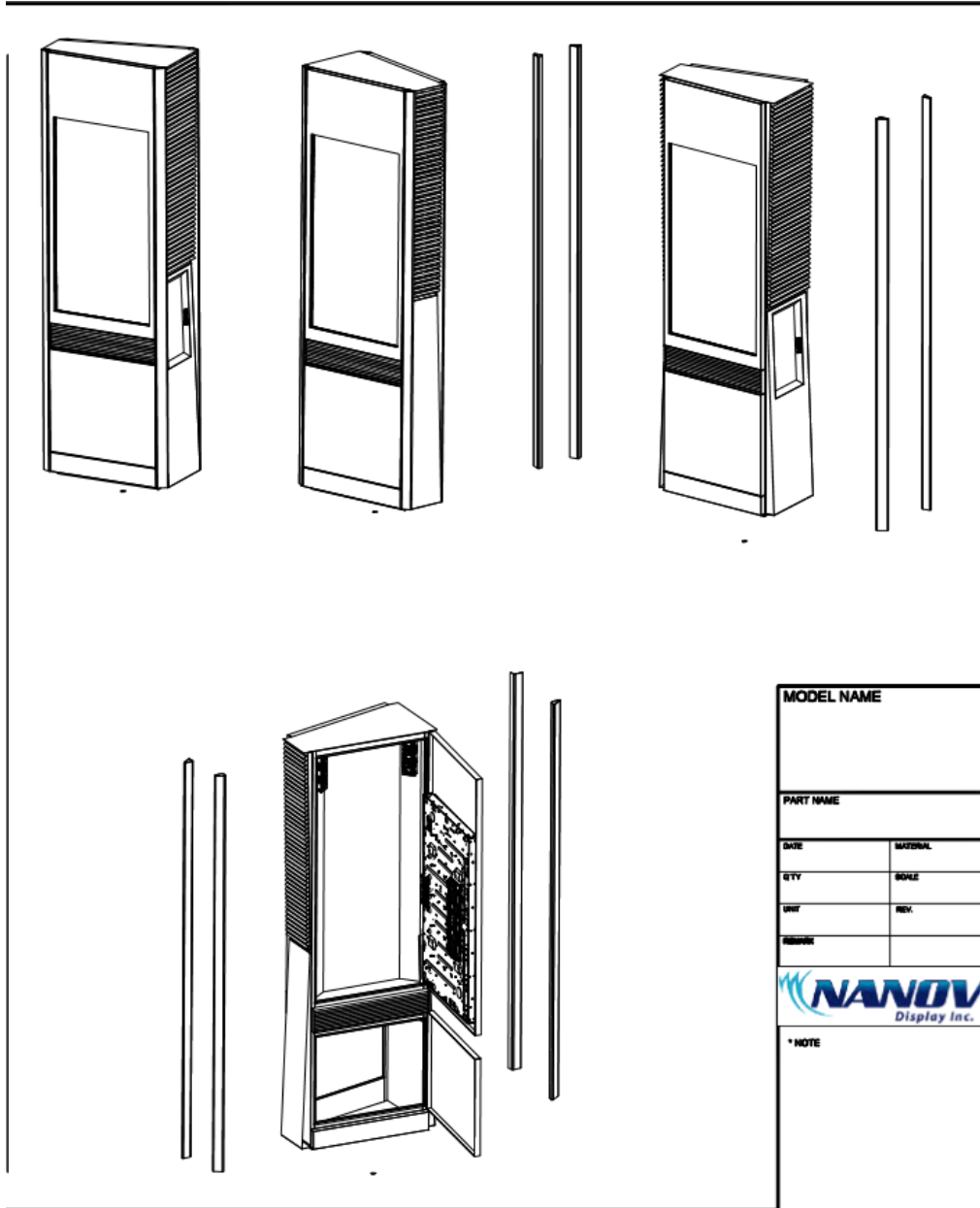
# Physical Dimensions

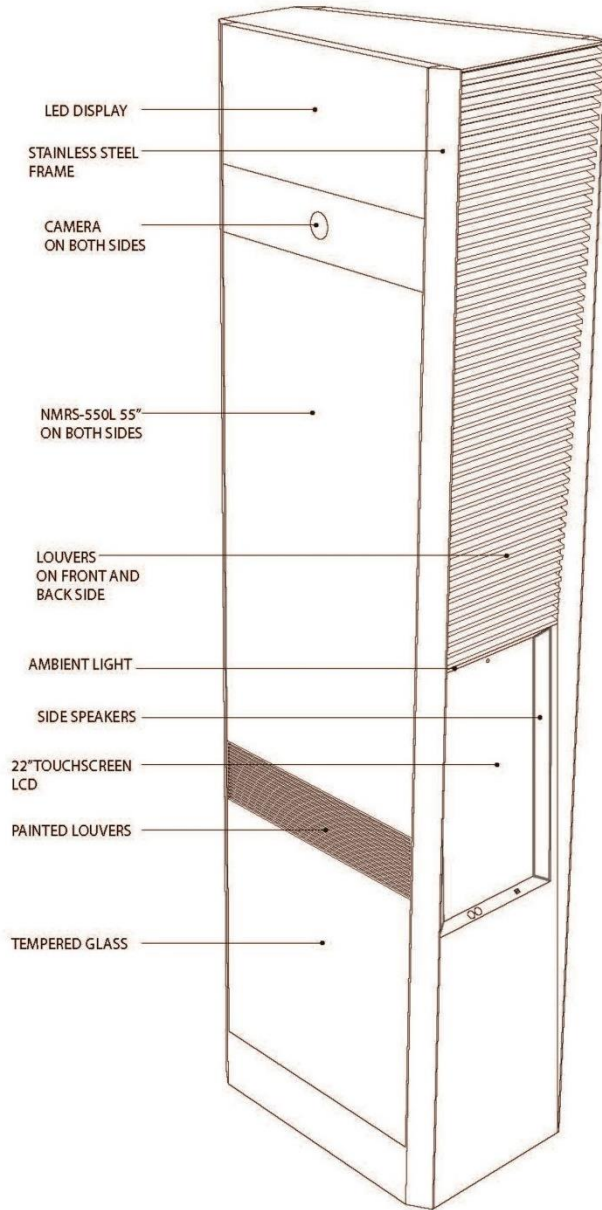






# Technical Drawings





# Managed Pro Kiosk Switch Specification

## Model GS310TP

### Features

- Conforms to IEEE 802.3, 802.3u and 802.3ab Ethernet Standards
- 2 Ports Dedicated SFP Fiber Ports
- 8 ports auto-negotiation 10/100/1000Mbps Ethernet RJ-45 ports
- Automatic MDI/MDIX crossover for each RJ-45 port
- Backpressure for Half-duplex mode and Flow control for Full-duplex mode
- Store-and-forward switching architecture
- 4K entry MAC address table and automatic address learning
- Jumbo Frame support (9KByte)
- L2/L3/L4 Access Control Lists
- QoS (Quality of Service) for traffic prioritization including port based, 802.1p and L2/L3/L4 DSCP-based
- Performs non-blocking full wire speed
- Snmp V1, V2c, V3 and RMON
- LED-indicator for Power, LNK/ACT

### GS310TP



Adobe Acrobat  
Document

[Click to open NetGear GS310TP datasheet](#)

## Model GS310TP

<b>Model Name</b>	GS310TP
<b>Form-Factor</b>	Desktop
<b>Hardware at Glance</b>	
<b>Parameter</b>	<b>Description</b>
<b>10/100/1000 Base-T RJ45 ports</b>	8 ports
<b>1000BASE-X Fiber SFP Ports</b>	2 ports
<b>PoE+802.3at Ports (Budget)</b>	8 PoE+ (55W)
<b>Power Supply</b>	1 external PSU, DC 54V 1.25A
<b>Fans</b>	Fan-less
<b>Software at Glance: Layer 2 Features</b>	
<b>Parameter</b>	<b>Description</b>
<b>Management</b>	Web Browser-based GUI (HTTP/HTTPS), PC-Based Smart Control Center Utility (SCC) RMON, SNMP
<b>IPv4 ACL and QoS</b>	L2, L3, L4, ingress
<b>IPv4 Multicast Filtering</b>	IGMP Snooping, Querier, Fast Leave, L2 Multicast Router
<b>Auto-VOIP/Auto Video</b>	Yes
<b>IEEE(802.3az) Energy Efficient Ethernet</b>	Yes
<b>MAC VLANs</b>	8K or 16K Max MAC 64 VLANs Static, Dynamic, Voice
<b>Convergence Advanced Features</b>	LLDP-MED RADIUS 802.1X LACP, STP, SNMP

<b>Environmental Characteristics</b>	
Storage	-20°C ~ 70°C
Humidity	10% to 90%
Size	236 x 101 x 30mm
Power Full Load	69.3 W
Heat Dissipation (Max)	236.59 BTU/hr

Hardware Features	Benefits
Dedicated SFP Fiber Uplinks	Dedicated SFP ports provides fiber uplinks without sacrificing any downlink Gigabit port. Up to 4 SFP ports provide not only redundant uplinks, but can also build dual redundancy by a trunked uplink with link aggregation and failover, the dual-redundancy, a powerful design for the network virtualization
PoE + Support on all ports (GS310TP and GS324TP)	Flexible to plug-in or change into high-power PD devices on any port without worrying which one port to plug in and whether it will be running out of PoE+ ports.
Low Acoustics	Fan-less design on GS308T/GS310TP/GS324T, and maximum acoustic noise level at 32.8dB for GS324TP and 26dB for GS348T respectively at 25°C (77°F) ambient for quieter office environment
L2 Software Features	Benefits
Advanced per port PoE controls	Remote power management of PoE connected devices including operation scheduling (e.g. Wireless APs, IP security cameras, secure access door locks, IoT devices...)
ACL filtering to permit or deny traffic based on	Provide granular network access control including L2/L3/L4 access control lists (ACLs).
Robust security features: <ul style="list-style-type: none"> <li>• 802.1x authentication (EAP)</li> <li>• Port-based security by locked MAC</li> <li>• DHCP Snooping</li> </ul>	Build a secured, converged network with all types of traffic by preventing external attacks and blocking malware, while allowing secure access for authorized users with RADIUS 802.1x port authentication.
Comprehensive QoS features: <ul style="list-style-type: none"> <li>• Port-based or 802.1p-based prioritization</li> <li>• Layer 3-based (DSCP) prioritization</li> <li>• Port-based ingress and egress rate limiting</li> </ul>	Advanced controls for optimized network performance and better delivery of mission-critical traffic such as voice and video.
Auto-VoIP, Auto-Voice VLAN, and Auto-Video VLAN	Automatic Voice over IP prioritization (Auto-VoIP) simplifies most complex multi-vendor IP telephone deployments either based on protocols (SIP) or on OUI bytes (default database and user-based OUIs) in the phone source MAC address, providing the best class of service to VoIP streams (both data and signaling) over other ordinary traffic by classifying traffic, and enabling correct egress queue configuration. Similarly, Auto-Video VLAN enables IGMP snooping to minimize broadcast streams.

IGMP Snooping	Facilitate fast receiver joins and leaves for multicast streams. Save cost and improve network efficiency by ensuring multicast traffic only reaches designated receivers without the need of an extra multicast router
Protected Ports	Ensure no exchange of unicast, broadcast, or multicast traffic between the protected ports on the switch, thereby improving the security of your converged network. This allows your sensitive phone conversations to stay private and your surveillance video clips can be forwarded to their designated storage device without leakage or alteration.
DHCP Snooping	Ensure IP address allocation integrity by only allowing DHCP messages from trusted DHCP servers and dropping malformed DHCP messages with a port or MAC address mismatch.
Dynamic VLAN Assignment (RADIUS)	IP phones and PCs can authenticate on the same port but under different VLAN assignment policies. Users are free to move around and enjoy the same level of network access regardless of their physical location on the network.
Dual Firmware Images	Dual firmware images for transparent firmware updates with minimum service interruption.



## Speaker Specification, Model NICS-100825

<b>Impedance</b>	8 Ohms	
<b>Power</b>	Nominal	25 Watts
	Maximum	50 Watts
<b>General Specifications:</b>		
<b>Type</b>	<b>Descriptions</b>	
Nominal Diameter	100 mm (4 inches)	
SPL	86 dB /W/M	
Frequency Range	FO - 13000 Hz	
Voice Coil Diameter	24.45 mm (1 inch)	
Voice Coil Material	Copper	
Magnet Weight	0.28 Kg (10 oz.)	
Piston Diameter	83 mm (2.9 inches)	
Magnet Gap Depth	4 mm (0.14 inches)	
Voice Winding Depth	10 mm (0.35 inches)	
<b>Thiele/Small Parameter:</b>		
<b>Type</b>	<b>Descriptions</b>	
DC resistance	6.2 Ohm	
Fs	79.9 Hz	
Qts	0.432	
Qes	0.532	

<b>Qms</b>	2.283
<b>Vas</b>	3.4 L (0.12ft3)
<b>Sd</b>	0.0031 m2 (4.8 inch2)
<b>Xmas</b>	2.75 mm (0.10 inches)
<b>Vd</b>	8.525 ccm
<b>Half-Space Reference Efficiency</b>	0.13%
<b>Efficient Bandwidth</b>	94.7 Hz
<b>Le</b>	0.32 mH
<b>Cms</b>	0.00097 m/N
<b>BL</b>	3.1 N/A
<b>Rms</b>	0.96 Kg/s
<b>Mounting Information:</b>	
<b>Type</b>	<b>Descriptions</b>
<b>Overall Diameter</b>	106 mm (4.1 inches)
<b>Bolt Circle Diameter</b>	116 mm (4.5 inches)
<b>Baffle Cutout Diameter</b>	102 mm (4.0 inches)
<b>Depth</b>	55 mm (2.1 inches)
<b>Net Weight</b>	0.74 Kg (1.63 lb.)



## **Additional Options Include:**

- Axis F44 integrated Camera
- VIX CR600 Validator
- Cradle Point 5G Modem

## Axis F44 Main Unit

### Video

Parameter	Specification
Video compression	H.264 (MPEG-4 Part 10/AVC) Baseline, Main and High Profiles Motion JPEG
Resolution	1920x1080 (1080p)a to 480x270 1280x720 to 480x270
Wide dynamic range	Forensic WDR
Frame rate	In 1080p with no WDR: up to 12.5/15 fps (50/60 Hz) In 720p with no WDR: up to 25/30 fps (50/60 Hz) In 720p with WDR: up to 12.5/15 fps (50/60 Hz)
Video streaming	Multiple, individually configurable streams in H.264 and Motion JPEG Axis Zipstream technology in H.264 Controllable frame rate and bandwidth VBR/MBR H.264 Quad view, max 1080p resolution 25/30 fps (50/60 Hz) with 720p capture mode 12.5/15 fps (50/60 Hz) with 1080p capture mode
Image settings	Compression, color, brightness, sharpness, contrast, white balance, exposure value, exposure control, exposure zones, local contrast, rotation, Corridor Format, text and image overlay, privacy mask, mirroring of images Wide Dynamic Range – Forensic Capture: Up to 120 dB depending on scene

## Audio

Parameter	Specification
Audio streaming	Two-way
Audio compression	AAC-LC 8/16 kHz, 8-64 kbit/s G.711 PCM 8 kHz 64 kbit/s G.726 ADPCM 8 kHz 32 kbit/s or 24 kbit/s Configurable bit rate
Audio input/output	External microphone input or line input, line output

## Network

Parameter	Specification
Security	Password protection, IP address filtering, HTTPSb encryption, IEEE 802.1Xb network access control, Digest authentication, User access log, Centralized Certificate Management
Supported protocols	IPv4/v6, HTTP, HTTPSb, SSL/TLSb, QoS Layer 3 DiffServ, FTP, SFTP, CIFS/SMB, SMTP, Bonjour, UPnP, SNMPv1/v2c/v3 (MIB-II), DNS, DynDNS, NTP, RTSP, RTP, TCP, UDP, IGMP, RTCP, ICMP, DHCP, ARP, SOCKS, SSH

## System Integration

Parameter	Specification
Application Programming Interface	Open API for software integration, including VAPIX <sup>®</sup> and AXIS Camera Application Platform; specifications at <a href="http://www.axis.com">www.axis.com</a> AXIS Video Hosting System (AVHS) with One-Click Connection ONVIF <sup>®</sup> Profile S and ONVIF <sup>®</sup> Profile G, specification at <a href="http://www.onvif.org">www.onvif.org</a>
Analytics	Included AXIS Video Motion Detection Active tampering alarm, audio detection Supported AXIS Cross Line Detection Support for AXIS Camera Application Platform enabling installation of third-party applications, <a href="http://www.axis.com/acap">www.axis.com/acap</a>
Audio input/output	Analytics, external inputs Edge storage events
Event actions	File upload: email, FTP, HTTP, HTTPS, network share Notification: email, HTTP, HTTPS and TCP Pre- and post-alarm video buffering Video and audio recording to edge storage, play audio clip, external output activation WDR mode
Built-in installation aids	Pixel counter
Data streaming	Event data

## General

Parameter	Specification
Casing	Aluminum
Sustainability	PVC free
Memory	1024 MB RAM, 256 MB Flash
Power	Power over Ethernet (PoE) IEEE 802.3af/802.3at Type 1 Class 3 max 12.95 W 8-28 V DC, max 13.33 W
Connectors	RJ45 for 10BASE-T/100BASE-TX PoE RJ12 for sensor units 6-pin terminal block for four configurable inputs/outputs (12 V DC output), max load 50 mA 3.5 mm mic/line in, 3.5 mm line out 5-pin terminal block RS232 2-pin terminal block for 8-28 V DC input
Storage	Two SD/SDHC/SDXC slots, (card not included) Support for SD card encryption Support for recording to network-attached storage (NAS) For SD card and NAS recommendations, see <a href="http://www.axis.com">www.axis.com</a>
Operating conditions	-30 °C to 60 °C (-22 °F to 140 °F) Humidity 10-85% RH (non-condensing)
Storage conditions	-40 °C to 65 °C (-40 °F to 140 °F)
Approvals	ECE R10 rev.04, EN 50121-4, EN 50581, IEC/EN/UL 60950-1, IEC 60068-2-1, IEC 60068-2-2, IEC 60068-2-14, IEC 60068-2-30, IEC 60068-2-60, IEC 60068-2-78, IEC 60529 IP4X, IEC 60721-3-5 5M3 (vibration, shock), IEC 62236-4, EN 55024, EN 61000-6-1, EN 61000-6-2, EN 61000-3-2, EN 61000-3-3 EN 55022 Class A, FCC Part 15 Subpart B Class A, ICES-003 Class A, VCCI Class A, C-tick AS/NZS CISPR 22 Class A, KCC KN22 Class A, KN24 EN 55022 Class A, FCC Part 15 Subpart B Class A, ICES-003 Class A, VCCI Class A, C-tick AS/NZS CISPR 22 Class A, KCC KN22 Class A, KN24



<b>Dimensions</b>	<b>51 x 121 x 121 mm (2 1/16 x 4 12/16 x 4 12/16 in)</b>
<b>Weight</b>	<b>542 g (1.19 lb)</b>
<b>Included accessories</b>	<b>Installation Guide, Windows decoder 1-user license, AVHS Authentication key</b>
<b>Optional accessories</b>	<b>AXIS F8001 Surface Mount with Strain Relief AXIS F8002 DIN Rail Clip AXIS T8120 15 W Midspan 1-port AXIS T83 Microphones For more accessories, see <a href="http://www.axis.com">www.axis.com</a></b>
<b>Video management software</b>	<b>AXIS Companion, AXIS Camera Station, Video management software from Axis' Application Development Partners available on <a href="http://www.axis.com/vms">www.axis.com/vms</a></b>
<b>Languages</b>	<b>English, German, French, Spanish, Italian, Russian, Simplified Chinese, Japanese, Korean, Portuguese, Traditional Chinese</b>
<b>Warranty</b>	<b>Axis 3-year warranty and AXIS Extended Warranty option, see <a href="http://www.axis.com/warranty">www.axis.com/warranty</a></b>

## Axis F1005-E Sensor Unit

Parameter	Specification
Models	AXIS F1005-E 3 m / 10 ft. cable: Standard, IP66/IP67-rated AXIS F1005-E 12 m / 39 ft. cable: Standard, IP66/IP67-rated

## Camera

Parameter	Specification
Image sensor	1/2.8" (effective) progressive scan RGB CMOS
Lens	Fixed iris 2.8 mm, F2.0 With AXIS F34/F41/F44 in 1080p: Horizontal angle of view: 113° Vertical angle of view: 62° With AXIS F34/F44 in 720p: Horizontal angle of view: 73° Vertical angle of view: 41°
Resolutions	Max. 1920x1200/1080
Wide dynamic range	WDR – Forensic Capture With AXIS F41: 1080p, 25/30 fps (50/60 Hz) With AXIS F44: 720p, 12.5/15 fps (50/60 Hz)
Minimum illumination	Color: 0.3 lux

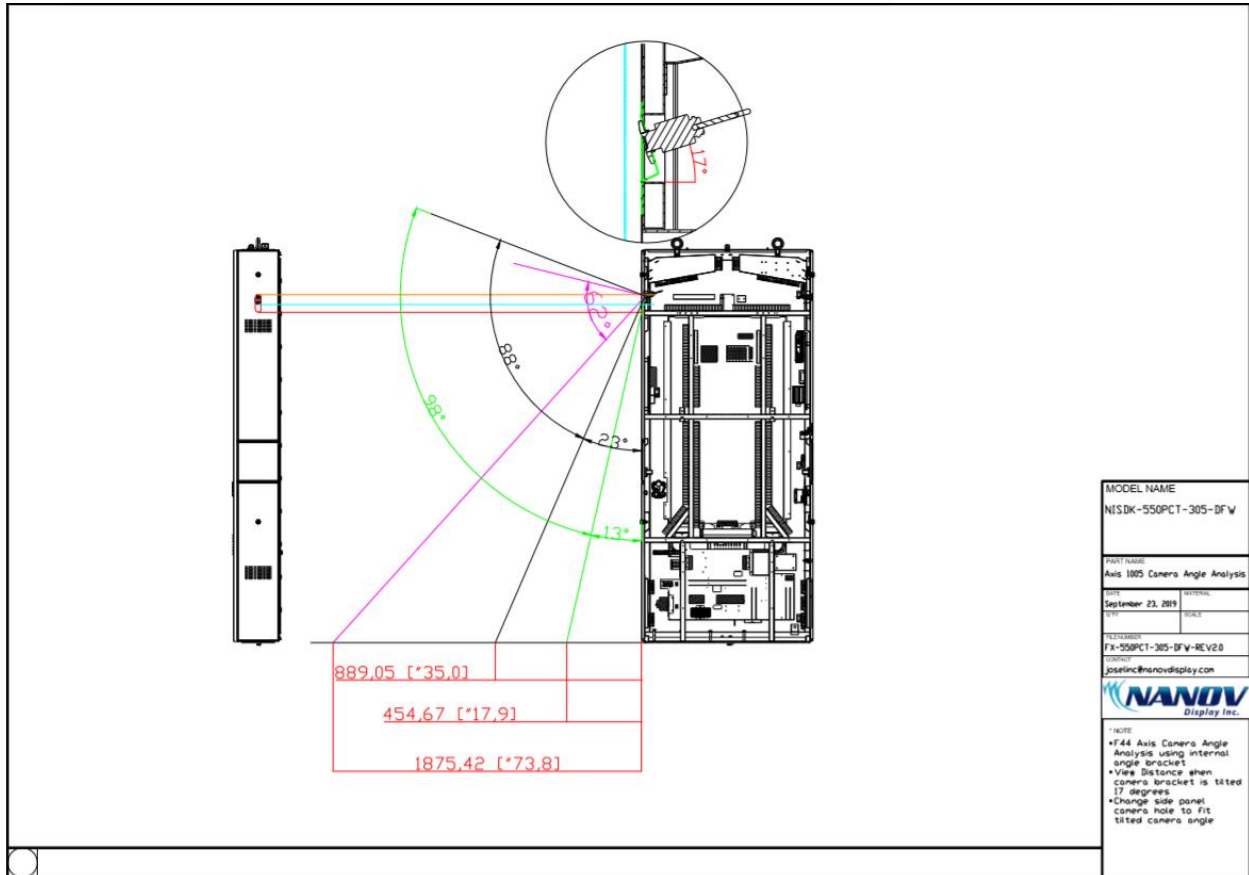
Shutter time	<p>With AXIS F34/F44: HDTV 720p 25/30 fps: 1/28000 s to 2 s 1080p 12.5/15 fps: 1/22500 s to 2 s</p> <p>With AXIS F41: HDTV 1080p 25/30/50/60 fps: 1/143000 s to 2 s WUXGA (1920x1200) 25/30 fps: 1/143000 s to 2 s</p>
Frame rate	Max. 50/60 fps (50/60 Hz)

## General

Parameter	Specification
Casing	IP66-, IP67-rated, Aluminum
Operating conditions	-30 °C to 55 °C (-22 °F to 131 °F) Humidity 10-100% RH (condensing)
Storage conditions	-40 °C to 65 °C (-40 °F to 140 °F)
Approvals	ECE R10 rev.04, EN 50121-4, EN 50581, IEC/EN/UL 60950-1, IEC 60068-2-1, IEC 60068-2-2, IEC 60068-2-14, IEC 60068-2-30, IEC 60068-2-60, IEC 60068-2-78, IEC 60529 IP4X, IEC 60721-3-5 5M3 (vibration, shock), IEC 62236-4, EN 55024, EN 61000-6-1, EN 61000-6-2, EN 61000-3-2, EN 61000-3-3 EN 55022 Class A, FCC Part 15 Subpart B Class A, ICES-003 Class A, VCCI Class A, C-tick AS/NZS CISPR 22 Class A, KCC KN22 Class A, KN24 EN 55022 Class A, FCC Part 15 Subpart B Class A, ICES-003 Class A, VCCI Class A, C-tick AS/NZS CISPR 22 Class A, KCC KN22 Class A, KN24
Dimensions	62 mm (2 7/16 in) ø 30 mm (1 3/16 in)

Weight	3 m / 10 ft. cable: 116 g (0.26 lb) 12 m / 39 ft. cable: 366 g (0.81 lb)
Required hardware	AXIS F34/F41/F44 Main Unit
Included accessories	Installation Guide AXIS F8201 Vari-angle Mounting Bracket
Optional accessories	AXIS F8203 Fixed Mount Bracket AXIS F8204 Mounting Band AXIS F8205 Bullet Accessory AXIS F8212 Trim Ring AXIS F8401 Clear Lens Protector
Warranty	Axis 3-year warranty and AXIS Extended Warranty option, see <a href="http://www.axis.com/warranty">www.axis.com/warranty</a>

# Angle Comparison



# Validator Specification

## Model: VIX CR600

General Specifications:	
Type	Descriptions
Configuration	400MHz ARM9      One ISO 7816 compliant SAM socket, 128MB RAM        able to communicate at up to 625Kbps 128MB Flash       Supports Linux 2.6.31 or newer
Compliance	Vix supplies products to meet many local and globally recognized standards such as CE, RoHS, various smartcard standards and many others. For more details on how Vix can meets your local requirements please contact Vix directly.
Panel, Gate and Desktop Configurations:	
Type	Descriptions
Compliance	Certified to EMV2.0.1
Dimensions	Panel: 148mm x 128mm x 38mm, Desktop: 141mm x 107mm x 32mm
User Interface	Colour TFT LCD (3.5" 1/4VGA) RGB LED ring around the display for user feedback Audio feedback >=72dBA at 1m
Antenna	Card reader antenna extends around the circumference of the unit, providing maximum target for reading cards
Physical Features	Can be used on a desktop and also panel or wall mounted
Features	10/100Mbps Ethernet                      Digital audio-driven speaker Diagnostics port with RS232            1 x High Speed USB2.0 Host or Device RS422 serial connection - at up to 460kbps    1 x Full Speed USB2.0 Host Support for wide input voltages - min 9-38v    Battery-backed real time clock

Antenna:	
Type	Descriptions
Configuration	EMV level 1 capable
Dimensions	104mm(w) x 67mm (d) x 20mm (h)
Antenna	Ferrite-backed antenna included for maximum read range
Physical Features	Suitable for integrating into kiosks, vending machines, or any equipment requiring contactless payment capability
TP5 Upgrade Kit:	
Physical Features	Mount kit for conversion of Vix TP5000 and TP5700 ticketing machines for AFC integration with EMV payments



## Modem Specification

### Cradlepoint Model COR IBR1700

Parameter	Specification
Model	MA1-17001200-NNA
LTE	Embedded 600 Mbps or 1 Gbps* LTE Advanced Pro modem & DC-HSPA+ fallback
WIFI	Simultaneous Tri Band 802.11 a/b/g/n/ac Wave 2 MU-MIMO
Material	Metal
Ignition Sensing	Automatic ON & time-delay OFF
OBDII Support	Yes, with accessory cable
Input Range	9-33 VDC (and low voltage shutoff)
Weight	3 lb. 7 oz (1.7 kg)
Support	Phone support: 24-hour weekdays with emergency response on weekends, Web: 24x7, Chat: 24x5
Cloud Managed	Yes, with NetCloud Manager
Carriers / Operators	AT&T, Verizon, T-Mobile, Sprint, Canada (Bell, Rogers, TELUS), Europe, Australia/New Zealand***
Ethernet Ports	5 LAN/WAN switchable 10/100/1000
Ruggedized	Yes, IP64, Shock/Vib/Humidity MIL Spec 810G & SAE J1455
GPS / GNSS	Yes, with active antenna & dead reckoning (GNSS/GPS + 3D Accel. + OBD-II)
Operating Temperature	-30 °C to 70 °C (-22 °F to 158 °F)
Size	8.8 × 7.5 × 1.7 in (224.3 × 190 × 44 mm)



Fallover	Yes
Dual Modem Capable	Yes, field-upgradable MC400 modem slot



## NANOV DISPLAY INC.

141 Flushing Ave Unit 705  
Brooklyn, NY 11205  
www.nanov.info  
Tel: 877 408-9944 Fax: 866 431-7242