



Drylac®
Powder Coatings

BASS
NEW YORK
ARCHITECTURAL METAL FABRICATOR



RAL 1000 49/15200



RAL 1001 49/15190
38/15001



RAL 1002 49/22590
38/20002



RAL 1003 49/22580



RAL 1004 49/22570



RAL 1005 49/22560



RAL 1006 49/22550



RAL 1007 49/22540



RAL 1011 49/15180



RAL 1012 49/22530



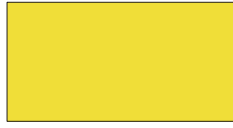
RAL 1013 49/11280
38/10013



RAL 1014 49/15170
38/15014



RAL 1015 49/15320
38/15015



RAL 1016 49/22520
38/20016



RAL 1017 49/22510



RAL 1018 49/21830



RAL 1019 49/13660
38/15019



RAL 1020 49/22500



RAL 1021 49/22280



RAL 1023 49/22490



RAL 1024 49/22480
38/20024



RAL 1027 49/22470



RAL 1028 49/22460



RAL 1032 49/22450



RAL 1033 49/22240



RAL 1034 49/23910



RAL 1037 49/20096



RAL 2000 49/24570



RAL 2001 49/24560



RAL 2002 49/24550



RAL 2003 49/24540



RAL 2004 49/24530



RAL 2008 49/24340



RAL 2009 49/24360



RAL 2010 49/24520



RAL 2011 49/24580



RAL 2012 49/24690



RAL 3000 49/33120



RAL 3001 49/31120



RAL 3002 49/31110



RAL 3003 49/31100



RAL 3004 49/33900



RAL 3005 49/31900



RAL 3007 49/31910



RAL 3009 49/31920



RAL 3011 49/31090



RAL 3012 49/31940
38/30012



RAL 3013 49/31950



RAL 3014 49/31080



RAL 3015 49/33670



RAL 3016 49/31980



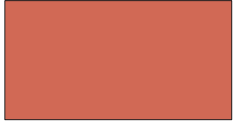
RAL 3017 49/31060



RAL 3018 49/31050



RAL 3020 49/31040



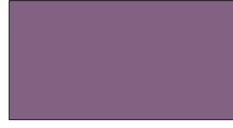
RAL 3022 49/33700



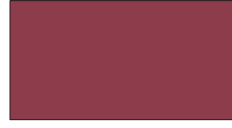
RAL 3027 49/33660



RAL 3031 49/34730



RAL 4001 49/43160



RAL 4002 49/31030



RAL 4003 49/32270



RAL 4004 49/31020



RAL 4005 49/42780



RAL 4006 49/32090



RAL 4007 49/32540



RAL 4008 49/32280



RAL 4009 49/34740



RAL 4010 49/40490



RAL 5000 49/42200



RAL 5001 49/42210



RAL 5002 49/42220



RAL 5003 49/42230



RAL 5004 49/42240
38/40004



RAL 5005 49/43190



RAL 5007 49/42250
38/40007



RAL 5008 49/42260
38/40008



RAL 5009 49/42270



RAL 5010 49/42280



RAL 5011 49/43180
38/40011



RAL 5012 49/43170



RAL 5013 49/42310
38/40013



RAL 5014 49/42320



RAL 5015 49/42330



RAL 5017 49/40760
38/40017



RAL 5018 49/41140
38/40020



RAL 5019 49/42360
38/40019



RAL 5020 49/44270
38/40018



RAL 5021 49/41190
38/40021



RAL 5022 49/42390



RAL 5023 49/44650



RAL 5024 49/44660



RAL 6000 49/53160
38/50000



RAL 6001 49/52900
38/50005



RAL 6002 49/52890



RAL 6003 49/52880
38/50003



RAL 6004 49/50980
38/50004



RAL 6005 49/50670
38/50002



RAL 6006 49/52870
38/50006



RAL 6007 49/52860
38/50007



RAL 6008 49/53240
38/50008



RAL 6009 49/52840
38/50009



RAL 6010 49/52830
38/50031



RAL 6011 49/52820
38/50011



RAL 6012 49/51540
38/50012



RAL 6013 49/52810
38/50013



RAL 6014 49/52800



RAL 6015 49/52790



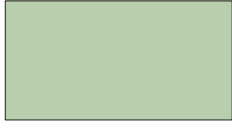
RAL 6016 49/51020
38/50016



RAL 6017 49/52780
38/50017



RAL 6018 49/52720
38/50018



RAL 6019 49/51000
38/50019



RAL 6020 49/52710
38/50020



RAL 6021 49/52700
38/50021



RAL 6022 49/52690
38/50022



RAL 6024 49/52680



RAL 6025 49/52670



RAL 6026 49/52660
38/50026



RAL 6027 49/50990
38/50027



RAL 6028 49/52650
38/50028



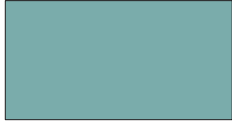
RAL 6029 49/52640
38/50029



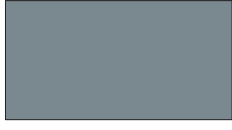
RAL 6032 49/52630
38/50032



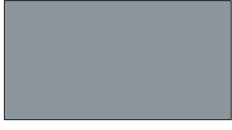
RAL 6033 49/55010
38/50033



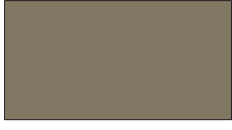
RAL 6034 49/55020
38/50034



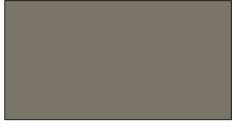
RAL 7000 49/72700
38/70000















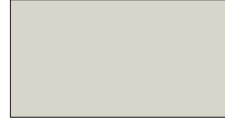
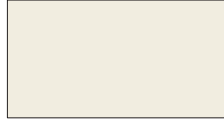

RAL 7001 49/72710



RAL 7002 49/72720
38/70007



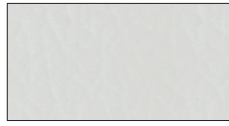
RAL 7003 49/72600

					
RAL 7004 49/73300 38/70004	RAL 7005 49/72590 38/70005	RAL 7006 49/72580 38/70006	RAL 7008 49/72570	RAL 7009 49/72770 38/70009	RAL 7010 49/72560 38/70014
					
RAL 7011 49/72790 38/70011	RAL 7012 49/71180 38/70012	RAL 7013 49/72550 38/70013	RAL 7015 49/72820 38/70015	RAL 7016 49/72830 38/70016	RAL 7021 49/72540 38/70021
					
RAL 7022 49/72850 38/70022	RAL 7023 49/72530 38/70023	RAL 7024 49/72870 38/70024	RAL 7026 49/72880 38/70026	RAL 7030 49/72890 38/70027	RAL 7031 49/72520 38/70031
					
RAL 7032 49/72910 38/70001	RAL 7033 49/72510 38/70033	RAL 7034 49/72500	RAL 7035 49/73510 38/70035	RAL 7036 49/72950 38/70036	RAL 7037 49/72480 38/70037
					
RAL 7038 49/72470 38/70038	RAL 7039 49/71020 38/70039	RAL 7040 49/75470 38/70046	RAL 7042 49/73250 38/70042	RAL 7043 49/72460 38/70043	RAL 7044 49/75480 38/70044
					
RAL 7045 49/77890 38/70045	RAL 7046 49/72010 38/70002	RAL 7047 49/72020 38/70047	RAL 8000 49/66170	RAL 8001 49/66160 38/60005	RAL 8002 49/66150 38/60002
					
RAL 8003 49/66140 38/60003	RAL 8004 49/66130 38/60004	RAL 8007 49/66120 38/60007	RAL 8008 49/66110 38/60008	RAL 8011 49/66100 38/60011	RAL 8012 49/66090 38/60012
					
RAL 8014 49/65230 38/60010	RAL 8015 49/63040	RAL 8016 49/66080 38/60016	RAL 8017 49/65220 38/60017	RAL 8019 49/65490 38/60019	RAL 8022 49/63080 38/60022
					
RAL 8023 49/66070 38/60023	RAL 8024 49/66060 38/60024	RAL 8025 49/66050 38/60025	RAL 8028 49/66500 38/60028	RAL 9001 49/10016 38/10001	RAL 9002 49/70520 38/10002
					
RAL 9003 49/11400 38/10003	RAL 9004 49/81950 38/80004	RAL 9005 49/82830 38/80010	RAL 9010 49/11500 38/10004	RAL 9011 49/80540	RAL 9016 49/11340 38/10010
					
RAL 9017 49/80550 38/80017	RAL 9018 49/72490 38/10018				

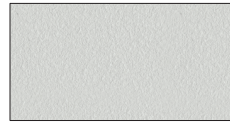
Textured and Smooth Finishes



rough texture matte



rough texture glossy



fine texture



smooth matte



smooth semigloss

The chart below lists all the RAL colors available in Textured and Smooth Finishes

approx RAL color	rough texture matte	rough texture glossy	fine texture	smooth matte	smooth semigloss
RAL 1013	09/10030	89/10020	89/10990	09/10870	-
RAL 1015	-	89/15080	89/15430	09/15380	-
RAL 1021	-	89/20120	-	-	-
RAL 3002	-	89/30560	89/30450	-	-
RAL 5003	-	89/40930	89/41040	-	-
RAL 5009	-	-	89/41050	-	-
RAL 5010	09/41000	89/40480	89/41060	-	89/40880
RAL 5012	09/40110	89/40940	89/41070	-	-
RAL 5015	09/41130	89/41110	-	-	-
RAL 7001	-	89/71320	89/71460	-	-
RAL 7012	09/71410	-	89/71470	-	89/71200
RAL 7016	09/71420	-	89/71480	-	89/71260
RAL 7021	09/70110	-	89/71490	09/71190	-
RAL 7030	09/70160	-	89/71500	-	-
RAL 7032	09/70200	89/70190	89/71520	-	-
RAL 7035	09/70230	89/70220	89/71530	09/71230	89/71300
RAL 7038	09/71440	89/71380	89/71540	09/71240	-
RAL 7040	-	89/70640	89/70630	-	89/76930
RAL 7044	-	89/70690	89/70680	-	-
RAL 8014	09/60060	89/60050	-	09/60320	-
RAL 8019	09/60160	-	89/60850	-	-
RAL 9001	09/10060	-	89/11000	09/10880	-
RAL 9002	09/10090	-	89/11010	09/10890	-
RAL 9003	09/10980	89/10960	89/11020	09/10900	89/10950
RAL 9005	09/80440	39/81420	09/80160	09/80130	89/80400
RAL 9010	09/10130	-	89/11030	09/10120	89/10110
RAL 9011	09/80450	-	89/80410	-	-
RAL 9016	-	89/10430	89/10420	09/13120	89/13130

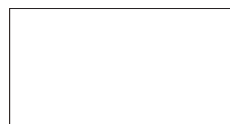
FDA-compliant | electrostatic dissipative | epoxy



FDA-compliant
Black FDA - 09/80108
gloss level 85±5



FDA-compliant
Grey FDA - 09/70339
gloss level 85±5



FDA-compliant
White FDA - 09/10126
gloss level 90+



electrostatic dissipative
Black Conductive - 09/81760
gloss level 20±5



epoxy
Black - 69/80291



Metallics



brilliant reflective | 49/91312
Chrome OGF ✱✱✱✱



brilliant reflective | 49/91260
Mirror Silver ✱



brilliant reflective | 49/95001
Kromezone ✱



glitter | 49/00320
Silver (top coat) ✱✱
(Black 49/82830 base coat)



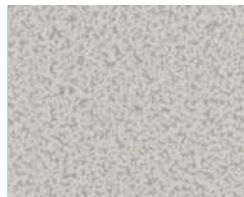
glitter | 49/00390
Twilight (top coat) ✱✱
(Black 49/82830 base coat)



glitter | 49/90009
Black Stardust ✱✱



antique/vein | 09/90160
White Hybrid ✱
Interior only



antique/vein | 09/90170
Grey Hybrid ✱
Interior only



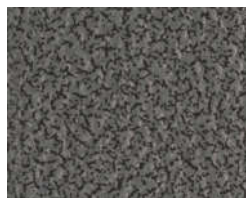
antique/vein | 09/90180
Copper Hybrid ✱
Interior only



antique/vein | 49/90620
Copper



antique/vein | 09/90190
Silver Hybrid ✱
Interior only



antique/vein | 49/93240
Silver



antique/vein | 09/68631
Silver Gold ✱
Interior only



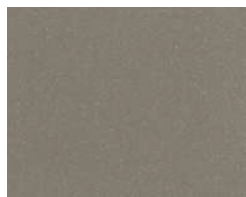
antique/vein | 09/90200
Gold Hybrid ✱
Interior only



antique/vein | 49/91190
Gold



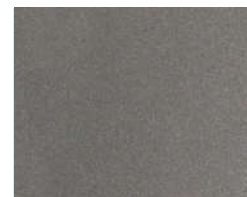
glimmer smooth | 49/70190
P 2 Glimmer



glimmer smooth | 49/70200
P 3 Glimmer



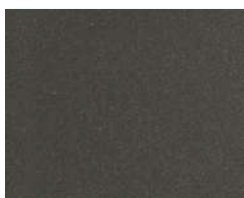
glimmer smooth | 49/70220
P 4 Glimmer



glimmer smooth | 49/80180
P 5 Glimmer



glimmer smooth | 49/70210
P 6 Glimmer



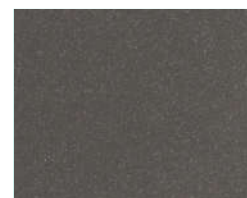
glimmer smooth | 49/80190
P 7 Glimmer



glimmer smooth | 49/70230
P 14 Glimmer



glimmer smooth | 49/77790
DB 702 Glimmer



glimmer smooth | 49/84340
DB 703 Glimmer



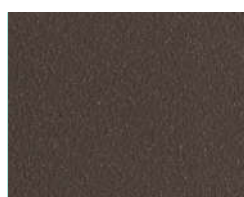
glimmer fine texture | 49/70785
US 1 Fine Texture Glimmer



glimmer fine texture | 49/70787
US 2 Fine Texture Glimmer



glimmer fine texture | 49/70789
DB 702 Fine Texture Glimmer



fine texture | 59/91611
Oil Rubbed Bronze Fine Texture



fine texture | 38/68192
Gold Brown



fine texture | 49/79680
Anthracite Metallic

ONLINE VERSION: The colors/effects shown here will deviate from the original color/effect due to screen technology.



fine texture | 09/90530
Silver Fine Texture
Interior only



fine texture | 09/68560
Rustico
Interior only



fine texture | 38/68130
Greco



fine texture | 09/68420
Copper Blast ***



glossy | 38/91020
Anodized Silver



glossy | 49/90380
Standard Silver *****



glossy | 49/90450
Sparkle Silver **|***



glossy | 38/90080
Brilliant Sparkle Silver **|***



glossy | 39/90000
Silver



glossy | 49/92790
No-Smudge Silver



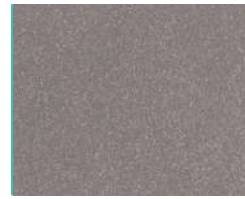
glossy | 38/90010
Marine Silver One Coat



glossy | 59/93370
APRX to RAL 9006 Gloss One Coat



glossy | 49/91558
Twinkle



glossy | 09/90460
APRX to RAL 9007 Gloss Silver
Interior only



glossy | 49/92880
APRX to RAL 9007 Silver Gloss



glossy | 49/92890
APRX to RAL 9006 Gloss One Coat



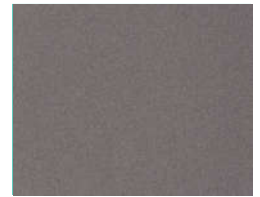
glossy | 49/93061
Stardust Silver Dark Metallic



glossy | 49/99999
Bengal Silver ***



glossy | 49/92900
Silver Gloss One Coat



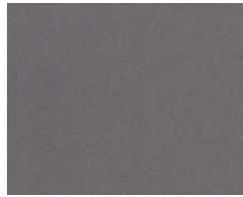
glossy | 59/95726
Gun Metal



glossy | 38/15020
Champagne 303



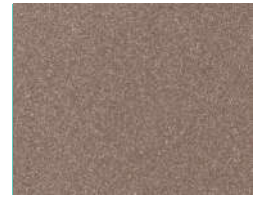
glossy | 09/96114
Satin Nickel *
Interior only



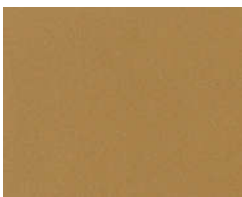
glossy | 09/80340
Grey Metallic *
Interior only



glossy | 09/80170
Anthracite Metallic
Interior only



glossy | 09/60610
Beige Metallic
Interior only



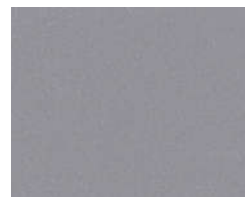
glossy | 49/90137
Sahara Gold *



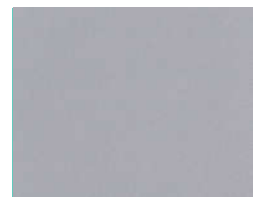
matte | 69/91390
Epoxy Silver Matte *
Interior only



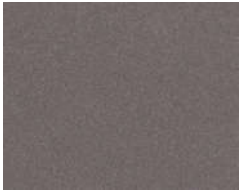
matte | 49/90500
Silver Matte



matte | 49/92380
Silver Matte One Coat



matte | 49/92910
APRX to RAL 9006 Matte One Coat



matte | 09/60600
Bronze Metallic
Interior only



matte | 39/60020
Bronze Matte



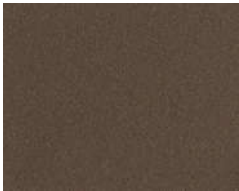
matte | 49/66220
Bronze C34 One Coat



matte | 49/61120
Low Lights Bronze



matte | 09/68635
High Lights Bronze
Interior only



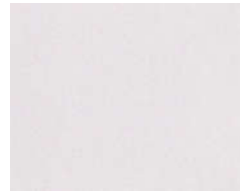
matte | 49/66230
Brown C33 One Coat



matte | 49/15240
Beige C32 One Coat



matte | 49/92780
Copper Metallic *



pearlescent | 49/18140
Pearlescent White ***



Metallics

* To increase durability and chemical resistance, TIGER Drylac® recommends the application of a clear top coat for interior and exterior applications.

** To enhance the depth of the finish, TIGER Drylac® suggests the application of a clear top coat.

Recommended clear top coats | For interior : Clear Flat Matte epoxy 69/00300 | For exterior and interior : Clear Matte acrylic hybrid 16/00030 | Clear Satin polyester TGIC 49/00280 | Clear Glossy polyester TGIC 49/00530 | Bengal Clear Glossy polyester TGIC 49/01234 | Clear Glossy polyester TGIC super durable 38/00001 | Anti-graffiti Clear Glossy polyester-urethane 44/00018.

*** Due to semi transparency of the product, the opacity of the color and finish will depend upon the substrate type and the film thickness. A film below 2.8 mils will exhibit limited hiding.

Special Effects

▲ Candy transparent and one-coat fluorescent finishes provide limited hiding. Candy transparent and fluorescent finishes have limited UV stability.

▲▲ Two-coat dormant transparent system. Applied as basecoat and top coated with a clear glossy top coat | Recommended clear top coats for interior and exterior: Clear Flat Matte acrylic hybrid 16/00030 | Geronimo satin polyurethane 44/00049 | Clear Semi Matte polyester TGIC 49/00280 | Bengal Clear Glossy polyester TGIC 49/01234 | Clear High Gloss SD polyester TGIC super durable 38/00001 | Clear Anti-Graffiti Glossy polyurethane 44/00018.

▲▲▲ Two-coat fluorescent system. Applied over a high gloss smooth White Base Coat 49/11000.

ONLINE VERSION: The colors/effects shown here will deviate from the original color/effect due to screen technology.

Special Effects



candy transparent | 49/20170
Gold ▲



candy transparent | 49/20180
Brass ▲



candy transparent | 49/03001
Nunavut ▲



candy transparent | 49/31570
Candy Raspberry ▲



candy transparent | 49/33340
Candy Red ▲



candy transparent | 49/35810
Transparent Red ▲



candy transparent | 49/63130
Copper ▲



candy transparent | 49/54810
Candy Lime Green ▲



candy transparent | 49/55730
Transparent Green ▲



candy transparent | 49/42130
Candy Teal ▲



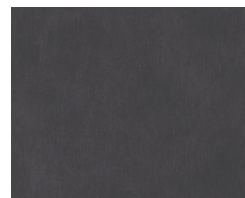
candy transparent | 49/46110
Transparent Blue ▲



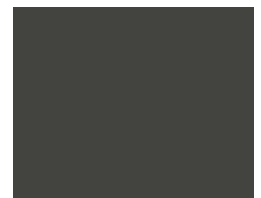
candy transparent | 49/43600
Candy Blue ▲



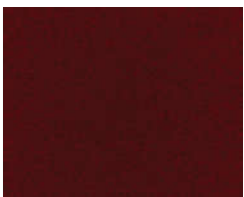
candy transparent | 49/41480
Candy Purple ▲



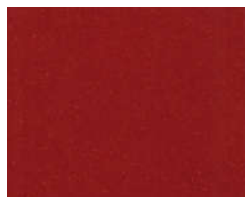
candy transparent | 49/80375
Black Smoke Transparent ▲



candy transparent | 49/80924
Black Smoke Transparent Matte ▲



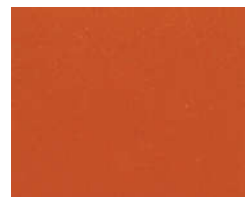
dormant transparent | 49/30193
Sparkle Burgundy ▲▲



dormant transparent | 49/30028
Sparkle New Red ▲▲



dormant transparent | 49/25002
Sparkle Copper ▲▲



dormant transparent | 49/23531
Sparkle Bomber Orange ▲▲



dormant transparent | 49/25006
Sparkle Light Orange ▲▲



dormant transparent | 49/50024
Sparkle Green ▲▲



dormant transparent | 49/50032
Sparkle Granny Smith ▲▲



dormant transparent | 49/40074
Sparkle Sky Blue ▲▲



dormant transparent | 49/40233
Sparkle Electric Blue ▲▲



dormant transparent | 49/40940
Blue ▲▲



dormant transparent | 49/41100
Violet ▲▲



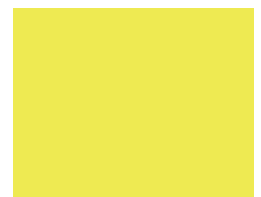
fluorescent one-coat | 49/24620
Red Orange ▲



fluorescent one-coat | 49/24610
Orange ▲



fluorescent one-coat | 49/22200
Yellow ▲



fluorescent one-coat | 59/20043
Neon Yellow ▲



fluorescent one-coat | 49/51340
Green ▲



fluorescent one-coat | 59/30075
Neon Pink ▲



fluorescent two-coat | 49/30760
Red ▲ | ▲▲▲▲



fluorescent two-coat | 49/24080
Orange ▲ | ▲▲▲▲



fluorescent two-coat | 49/21500
Yellow ▲ | ▲▲▲▲



fluorescent two-coat | 49/30430
Bright Pink ▲ | ▲▲▲▲



anodized effect | 61/00015
Silver (clear)



anodized effect | 61/78003
Champagne



anodized effect | 61/78002
Light Bronze



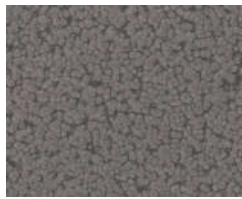
anodized effect | 61/68002
Medium Bronze



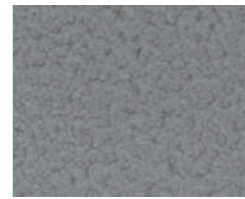
anodized effect | 61/68001
Dark Bronze



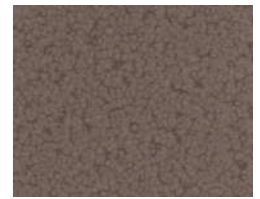
anodized effect | 61/80079
Black



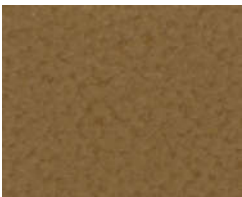
hammered | 39/90020
Silver



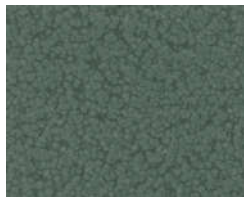
hammered | 39/90980
Light Silver



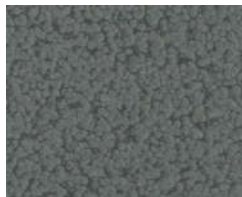
hammered | 39/60002
Sepia



hammered | 39/90280
Gold Brown



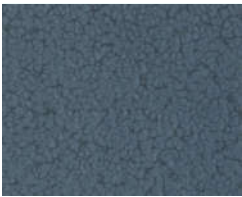
hammered | 39/40003
Malachite



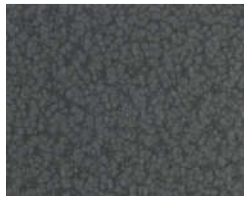
hammered | 39/50002
Reseda



hammered | 39/40002
Sapphire



hammered | 39/40750
Capri



hammered | 39/80005
Black



designer finish | 44/10033
Quartzite Design Texture Matte



designer finish | 44/60035
Lava Design Texture Matte



designer finish | 49/62711
Rust Fine Texture



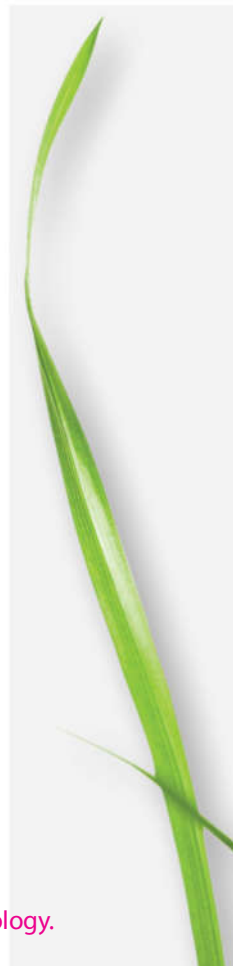
designer finish | 44/60034
Breccia Design Texture Matte



designer finish | 49/60015
Pyrite Fine Texture



designer finish | 44/80026
Graphite Design Texture Matte



ONLINE VERSION: The colors/effects shown here will deviate from the original color/effect due to screen technology.



Drylac[®]
Powder Coatings

Super Durable

Super Durable Powder Coatings | Volume 1

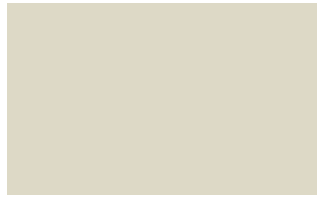




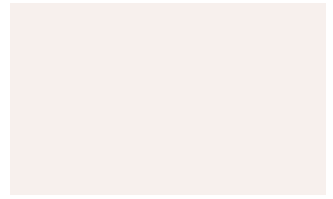
satin | 38/15002
Sierra Tan *** | gloss level 30±5



satin | 38/15012
Sandstone *** | gloss level 30±5



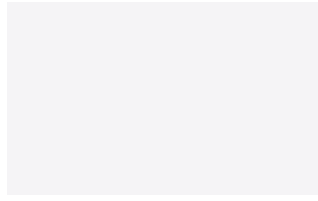
satin | 38/15003
Almond *** | gloss level 26-35



satin | 38/10070
Bone White *** | gloss level 22-32



satin | 38/10130
Seashell White *** | gloss level 26-35



semi matte | 38/11401
Pompano White *** | gloss level 45±5



satin | 38/70070
Taupe *** | gloss level 26-35



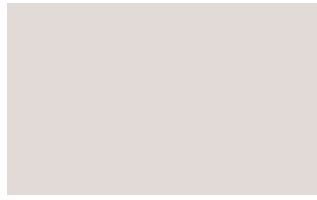
satin | 38/70019
Slate Grey | gloss level 26-35



satin | 38/70049
Grey | gloss level 26-35



satin | 38/70025
Ash Grey | gloss level 26-35



satin | 38/70048
Sky Grey | gloss level 26-35



satin | 38/40051
Military Blue | gloss level 25±5



satin | 38/80020
Jet Black | gloss level 26-35



satin | 38/60090
Dark Anodized Bronze | gloss level 30±5



satin | 38/60080
Statuary Bronze | gloss level 26-35



satin | 38/60014
Medium Bronze | gloss level 26-35



satin | 38/60018
Koko Brown | gloss level 26-35



satin | 38/30041
Redwood | gloss level 26-35



satin | 38/50110
Hartford Green | gloss level 26-35



satin | 38/50037
Classic Green | gloss level 25±5



satin | 38/50080
Ivy Green | gloss level 26-35



matte | 38/40025
Interstate Blue | gloss level 16-25



matte | 38/30028
Brick Red | gloss level 16-25



matte | 38/30033
Boysenberry | gloss level 16-25



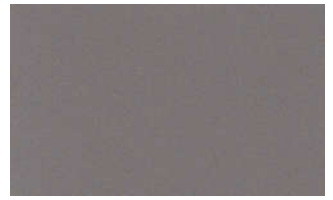
matte | 38/60006
Aged Copper | gloss level 16-25



metallic | 38/88005 **NEW**
Sparrow Grey



metallic | 38/90018
Argento 314



metallic | 38/90016
Argento 312

ONLINE VERSION: The colors/effects shown here will deviate from the original color/effect due to screen technology.

*** To enhance the depth of finish, TIGER Drylac® recommends the application of a clear top coat. | *** Due to semi transparency of the product, the opacity of the color and finish will



metallic | 38/90011
Argento 308



metallic | 38/90009
Argento 307



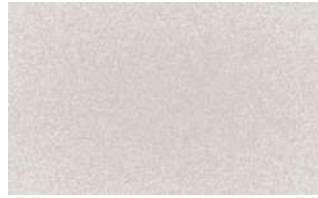
metallic | 38/90007
Argento 305



metallic | 38/90003
Argento 301



metallic | 38/90080
Brilliant Sparkle Silver ***|***



metallic | 38/99999
Bengal Silver ***



metallic | 38/90010
Marine Silver One Coat



metallic | 38/91020
Anodized Silver



metallic | 38/68008
Spartacus Bronze **NEW**



metallic | 38/60060
Medium Bronze



metallic | 38/96021
Neptune Bronze **NEW**



metallic | 38/68015
Venetian Copper **NEW**



metallic | 38/15021
Champagne 304



metallic | 38/15020
Champagne 303



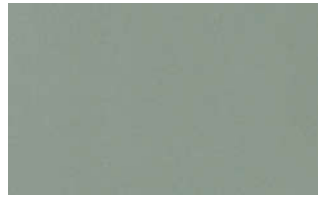
metallic | 38/15018
Champagne 302



metallic | 38/15017
Champagne 301



metallic | 38/20014
Deore 302 ***



metallic | 38/50035
Seafoam Green



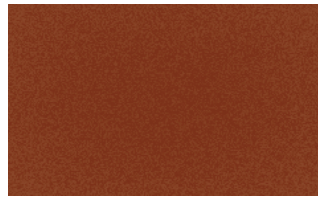
metallic | 38/50043
Highland 301



metallic | 38/90015
Pearl Dark Grey



metallic | 38/40127
Pearl Night Blue



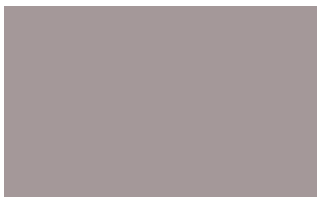
metallic | 38/60064
Pearl Copper



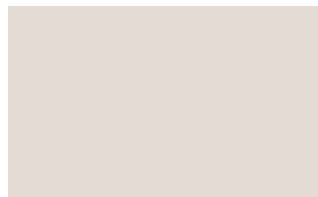
glossy | 38/70061
Grey Classic 314 | gloss level 80-95



glossy | 38/70056
Grey Classic 310 | gloss level 80-95



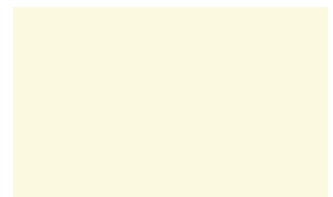
glossy | 38/70054
Grey Classic 308 | gloss level 80-95



glossy | 38/70032
Grey Classic 303 | gloss level 80-95



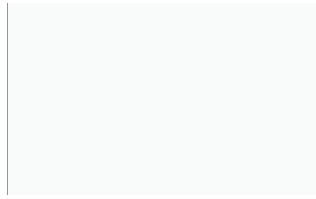
glossy | 38/15009
Creme 305 *** | gloss level 80-95



glossy | 38/15007
Creme 303 *** | gloss level 80-95



glossy | 38/15005
Creme 301 *** | gloss level 80-95



glossy | 38/10007
Bianco 302 *** | gloss level 80-95



glossy | 38/60039
Marrone 308 | gloss level 80-95



glossy | 38/60026
Marrone 306 | gloss level 80-95



glossy | 38/50041
Highland 307 | gloss level 80-95



glossy | 38/50040
Highland 306 | gloss level 80-95



glossy | 38/50039
Highland 305 | gloss level 80-95



glossy | 38/40033
Azzurro 307 | gloss level 80-95



glossy | 38/80002
Carbon 301 | gloss level 80-95



semi gloss | 38/81009
Railing Black | gloss level 60±5



BLM | 38/60500
Carob Brown | gloss level 60±5



BLM | 38/60400
Sudan Brown | gloss level 60±5



BLM | 38/71700
Shadow Gray | gloss level 60±5



BLM | 38/16500
Carlsbad Canyon Brown | gloss level 60±5



BLM | 38/50400
Beetle | gloss level 60±5



BLM | 38/53000
Yuma Green | gloss level 60±5



BLM | 38/51400
Juniper Green | gloss level 60±5



BLM | 38/52600
Shale Green | gloss level 60±5



BLM | 38/50500
Covert Green | gloss level 60±5



anodized effect | 61/00015
Silver (clear)



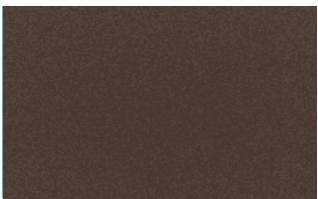
anodized effect | 61/78003
Champagne



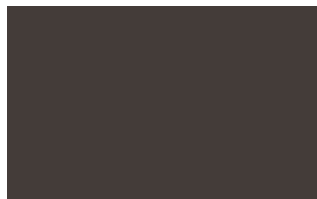
anodized effect | 61/78002
Light Bronze



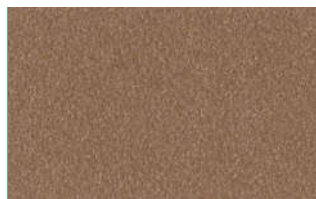
anodized effect | 61/68002
Medium Bronze



anodized effect | 61/68001
Dark Bronze



anodized effect | 61/80079
Black



fine texture | 38/68130
Greco



fine texture | 38/68192
Gold Brown

ONLINE VERSION: The colors/effects shown here will deviate from the original color/effect due to screen technology.



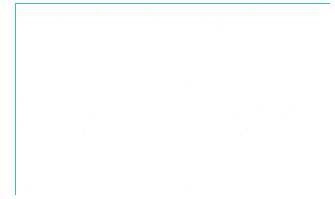
primer | 69/70000
Dryprotector | gloss level 3±2



primer | 09/73841
OGF | gloss level 70±5



primer
69/90500 (USA/Mexico)
69/90701 (Canada)
Zinc-Rich Primer | gloss level 75±15



fine texture
all colors can be custom made in this finish

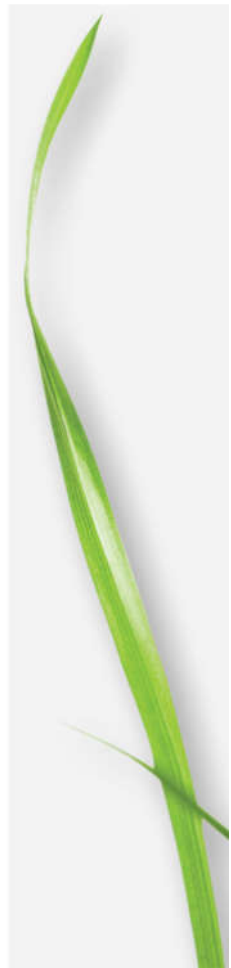
TIGER Drylac® Super Durables are available in the following clear finishes:



Product Name	Product ID	Finish
Clear High Gloss SD	38/00001	clear glossy super durable
Clear Matte SD	38/00088	clear super durable

TIGER Drylac® Super Durables are available in smooth glossy finish (gloss level 85±5) in the following RAL colors as standard and custom products*. Please contact TIGER Drylac® for more information:

RAL color Product ID	RAL color Product ID	RAL color Product ID	RAL color Product ID
RAL 1001 38/15001	RAL 6009 38/50009	RAL 7011 38/70011	RAL 8001 38/60005
RAL 1002 38/20002	RAL 6010 38/50031	RAL 7012 38/70012	RAL 8002 38/60002
RAL 1013 38/10013	RAL 6011 38/50011	RAL 7013 38/70013	RAL 8003 38/60003
RAL 1014 38/15014	RAL 6012 38/50012	RAL 7015 38/70015	RAL 8004 38/60004
RAL 1015 38/15015	RAL 6013 38/50013	RAL 7016 38/70016	RAL 8007 38/60007
RAL 1016 38/20016	RAL 6016 38/50016	RAL 7021 38/70021	RAL 8008 38/60008
RAL 1019 38/15019	RAL 6017 38/50017	RAL 7022 38/70022	RAL 8011 38/60011
RAL 1024 38/20024	RAL 6018 38/50018	RAL 7023 38/70023	RAL 8012 38/60012
RAL 5004 38/40004	RAL 6019 38/50019	RAL 7024 38/70024	RAL 8014 38/60010
RAL 5007 38/40007	RAL 6020 38/50020	RAL 7026 38/70026	RAL 8016 38/60016
RAL 5008 38/40008	RAL 6021 38/50021	RAL 7030 38/70027	RAL 8017 38/60017
RAL 5011 38/40011	RAL 6022 38/50022	RAL 7031 38/70031	RAL 8019 38/60019
RAL 5013 38/40013	RAL 6026 38/50026	RAL 7032 38/70001	RAL 8022 38/60022
RAL 5017 38/40017	RAL 6027 38/50027	RAL 7033 38/70033	RAL 8023 38/60023
RAL 5018 38/40020	RAL 6028 38/50028	RAL 7035 38/70035	RAL 8024 38/60024
RAL 5019 38/40019	RAL 6029 38/50029	RAL 7036 38/70036	RAL 8025 38/60025
RAL 5020 38/40018	RAL 6032 38/50032	RAL 7037 38/70037	RAL 8028 38/60028
RAL 5021 38/40021	RAL 6033 38/50033	RAL 7038 38/70038	RAL 9001 38/10001
RAL 6000 38/50000	RAL 6034 38/50034	RAL 7039 38/70039	RAL 9002 38/10002
RAL 6001 38/50005	RAL 7000 38/70000	RAL 7040 38/70046	RAL 9003 38/10003
RAL 6003 38/50003	RAL 7002 38/70007	RAL 7042 38/70042	RAL 9004 38/80004
RAL 6004 38/50004	RAL 7004 38/70004	RAL 7043 38/70043	RAL 9005 38/80010
RAL 6005 38/50002	RAL 7005 38/70005	RAL 7044 38/70044	RAL 9010 38/10004
RAL 6006 38/50006	RAL 7006 38/70006	RAL 7045 38/70045	RAL 9016 38/10010
RAL 6007 38/50007	RAL 7009 38/70009	RAL 7046 38/70002	RAL 9017 38/80017
RAL 6008 38/50008	RAL 7010 38/70014	RAL 7047 38/70047	RAL 9018 38/10018



* minimum order quantity applies