

KITCHENS BEDROOMS & BATHROOMS

FRESH
NEW
LOOK

Perfectly placed

WHICH KITCHEN LAYOUT WORKS FOR YOU AND YOUR FAMILY?

All you need to know about kitchen lighting



KNOW HOW

Recreate your favourite hotel bathroom look at home

The latest wine storage solutions

Two designers work up ideas for a reader's new kitchen extension

ON-TREND UPDATE

26

statement beds

"We cook every day so wanted the island to be as big as possible."



Yoko designed the cabinet doors, drawers, and cover panels with a smart brass recess. She had a joiner make them and build the kitchen using Ikea carcasses. The cabinetry is painted in Farrow & Ball's Oval Room Blue.

Calm & Collected

With clever ideas and a delicate colour palette, designer Yoko Kloeden has created a stylish home that can withstand the demands of three young children and busy family life ▷

Words: Jacky Parker Photography: Bill Kingston

Looking for beautiful kitchen lighting like this? Click to [p74](#) for inspiration



As a former corporate investor, business travel was a large part of Yoko Kloeden's life. She spent long periods of time in serviced apartments around the world – but whether in Toronto, Moscow, or Singapore, they often looked the same. “They were these generic, boring, beige apartments with no personality or sense of place,” says Yoko, who is originally from Japan. “I’d always loved design, but it got me thinking about how space affects the way we feel and I decided it was something I wanted to explore.” While based in Singapore with her husband Andrew, a telecom executive, the couple had the opportunity to transfer to London. “We got here and it seemed everyone was renovating,” says Yoko. “Interior design was popular; I was also seven months pregnant with our first child, so it felt like a good time to retrain.” Yoko completed an interior design course at the Interior Design School, and applied her new craft to her first London home. As client projects and two more children followed, the couple outgrew their space. Setting their sights on family-friendly Richmond, they rented a house until they found the perfect doer-upper: a ramshackle three-bedroom Victorian semi on a quiet, tree-lined street. Over the next year, Yoko transformed the neglected property into the beautiful, functional family home she and Andrew share with Alex, Richard, and Sakura, now seven, five, and three. Here, she tells us how she did it...

How did you plan the ground-floor layout?

I wanted an open living space with a separate office. The old layout was chopped up: there was a half-width extension at the back, which was divided into three rooms, and at the front two rooms were knocked through but separate, with the hallway enclosed. We demolished the rear and created a full-width extension to maximise the space, and built out as far as the neighbour's extension. I closed off the front room to become an office and opened up the rest of the ground floor as a kitchen, dining, and living space. I tucked the utilities and a cloakroom under the stairs and used the remaining width as a study area for the children, so they can do their homework there rather than at the dining table.

How did you decide on the look of the open-plan kitchen?

We already had the trailing ivy and apple tree in the garden, so the back of the house was about the view and connecting with the outside. I decided on the exposed brick wall in the extension quite quickly and thought Crittall-style windows would work well. It needed to be robust but also elegant and understated. I like a calming palette and I'm drawn towards greens, blues, and Mediterranean colours, so chose those with brass fittings and splashes of black for a touch of glamour.

What were your priorities for the kitchen?

We cook every day and the children love helping, so we wanted the island to be as big as possible. It's useful to have a large surface area and usually one of the children will sit here while we're preparing. I didn't want the mess of pots and pans or clutter on the island, so placed the range cooker along the wall and included plenty of storage either side.

What inspired the design of the master bedroom?

In our previous home, our bedroom was white and Scandinavian in style. We had blackout blinds but it was still very bright, particularly in the summer. We were able to convert the loft here, and as the room was at the top of the house, I wanted a cocooning effect with dark and moody colours to create an escape from daily life. I'd used the blue on a client's project and really liked it, so chose it here, layered with greys, greens, and deep-ocean shades.

How did you plan the master ensuite?

We wanted a walk-in shower and when I saw the marble I just loved its striped veining. The tones worked with the bedroom colours, so rather than solid walls I used full-height glass panels to connect the space and make it feel bigger. ▶



↑ A classic marble-topped Eero Saarinen Tulip table and Eames DCM dining chairs are beautifully offset by the rustic backdrop. The stunning Modo chandelier by Roll & Hill completes the relaxed yet elegant look.

← The original bricks from the demolished external walls were reused inside to connect the house and garden. Lush foliage inside and out enhances the connection.

"I decided on the exposed brick wall in the extension quite quickly and thought Crittall-style windows would work well. It needed to be robust but also elegant and understated."





The bold black lines of the Crittall-style windows beautifully frame the garden. Other elements, such as the door handles, range cooker, and lights, were chosen in black to balance the look. ▶

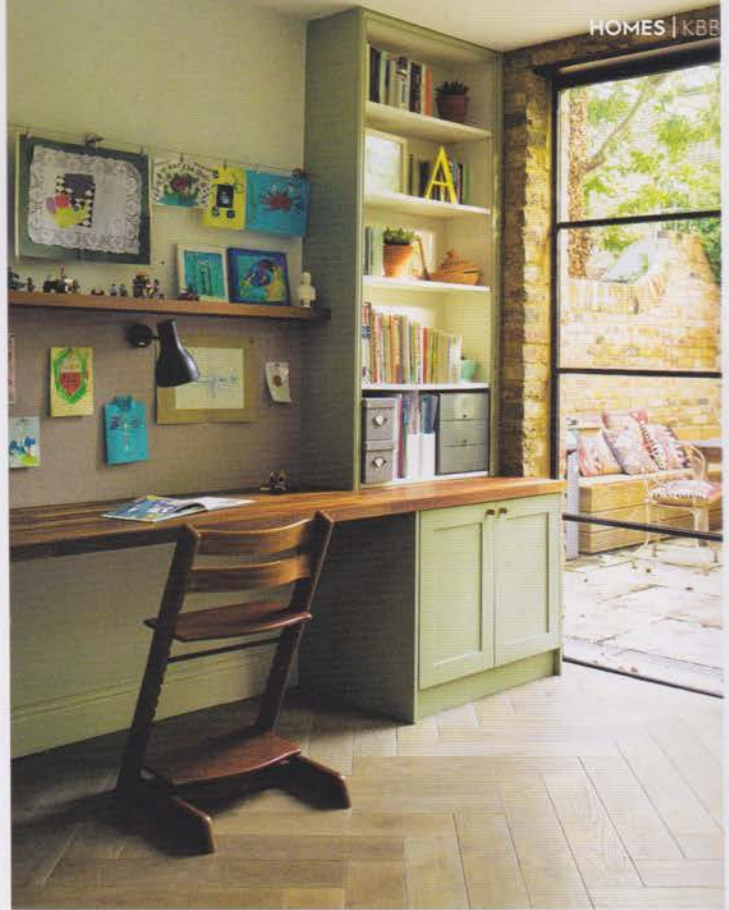
Slick white Silestone worktops are a cool foil to the warm natural tones and offer durability. The Carrara marble splashback and brass details introduce a luxurious edge. Gubi pendant lights and Cherner barstools add classic mid-century style.



Expert advice

"When planning an island, don't forget to think about where the plug sockets will go. You'll need easily accessible power points for using with small appliances, such as a food processor or a mixer."

Ruth Bell, Editor



↑ The children's desk chairs double up as their dining chairs, keeping the space uncluttered. Books and toys can be easily put away in the cupboards. Herringbone engineered oak flooring looks beautiful and is robust enough to withstand the children running in and out.

↓ The utility room and cloakroom are tucked away under the stairs. In the cloakroom, the plastering was done after the hexagonal tiles were laid, to achieve the beautiful smooth, flush finish.



↓ Original floorboards from the ground floor were stained and re-laid in the bedroom. "Victorian houses were made from good, solid materials," says Yoko. "We wanted to make sure we reused anything we removed." Granite side tables and a buttoned velvet headboard add texture.





Yoko chose a mix of brass and chrome fittings in the ensuite. The wardrobes are to the left of the shower, tucked under the eaves.

Q&A

Homeowner and designer Yoko Kloeden says...

What element took up the majority of the budget?

The structure of the extension, as we demolished and rebuilt the house at the rear and upwards. People are short of space, especially in London, and getting the balance right between extending as much as possible and saving enough funds for the interior is a dilemma we definitely faced.

Any places you managed to save money?

We went for off-the-shelf skylights (three in the house) rather than having them made bespoke – even the big skylight over the kitchen. I have seen clients spend a small fortune on architectural glazing, but I would advise spending more on what you use and touch on a daily basis.

Biggest challenge with the project?

Wanting to do everything and not having enough funds! We always have a very tight grip on a budget and this was certainly the case here.

Any tips for people embarking on a similar project?

Find good professionals who listen to you and really care about what you want to achieve. ▶





The cupboard and vanity unit were created from Ikea kitchen units. As it's the family bathroom, Yokō introduced the warm ash surfaces to prevent it looking too stark. The walk-in shower with its floor-to-ceiling glazing gives a clean, uncluttered effect.



↑ In the boys' bedroom, the original floorboards from the ground floor have been sanded, oiled, and reused. Handily, the bunk beds from Aspace have storage in the base.

← The bathroom's monochrome style has a Danish influence. The hardwearing porcelain floor tiles, which look like pale concrete, are complemented by the hand-glazed black tiles' beautiful texture. The black window frame pulls the room together.

Yoko designed the children's rooms around the concept of 'forest bathing' - the Japanese enjoyment of being in the woods. "The idea was for it to have a calming effect," she says. The beautiful wall mural in Sakura's room is from Sian Zeng.



SOURCE BOOK

DESIGN

Interior design Yoko Kloeden Design (07964 544172 or yokokloeden.com)

Architecture Ampersand Architecture (ampersandarchitecture.co.uk)

Kitchen Yoko Kloeden Design, as before

KITCHEN

Cabinetry Yoko Kloeden Design, as before, painted in Oval Room Blue, Farrow & Ball (01202 876141 or farrow-ball.com)

Worktops Lagoon composite, Silestone (01256 761229 or silestone.co.uk)

Splashback Carrara marble, Stone System of London (0845 6585001 or stonesystemoflondon.co.uk)

Flooring Engineered oak, for similar try The Solid Wood Flooring Company (01666 504015 or thesolidwoodflooringcompany.com)

Appliances Range cooker, Rangecookers (01244 402975 or rangecookers.co.uk); Integrated extractor, Neff (0344 892 8989 or neff.co.uk); Fridge-freezer and microwave, Bosch (0344 892 8979 or bosch-home.co.uk); Integrated dishwasher, Ikea (020 3645 0000 or ikea.com)

Sink Brass & Traditional (0117 330 2277 or brassandtraditional.co.uk)

Tap The French House (020 7859 4939 or thefrenchhouse.net)

Pendant lights Semi by Gubi at Viaduct (020 7278 8456 or viaduct.co.uk)

Barstools Cherner at The Conran Shop (0844 848 4000 or conranshop.co.uk)

Dining table Tulip by Eero Saarinen at Viaduct, as before

Dining chairs DCM Eames at Aram (020 7557 7557 or aram.co.uk)

Chandelier Modo Chandelier Roll & Hill at SCP (020 7739 1869 or scp.co.uk)

LIVING AREA

Sofa Ligne Roset (020 7323 1248 or ligne-roset.com)

Wall tiles Emery & Cie (020 8969 0222 or emeryetcie.com)

Coffee table For similar try Ebay (ebay.co.uk)

Vintage chairs For similar try The Old Cinema (020 8995 4166 or theoldcinema.com)

CLOAKROOM

Tiles Casablanca hexagon porcelain, Mandarin Stone (01600 715444 or mandarinstone.com)

Towel ring and soap dish Bond brushed brass, Miller (01844 264800 or millerbathrooms.co.uk)

Basin and brassware Saneux (020 8686 5100 or saneux.com)

MASTER BEDROOM

Bed Sofa.com (0345 400 2222 or sofa.com), upholstered in white velvet from Designers Guild (020 7351 5775 or designersguild.com)

Bed linen H&M (0344 736 9000 or hm.com)

Flooring Original floorboards, for similar try The Antique Oak Flooring Company (020 8501 7555 or reclaimedflooring.co.uk)

Paint Stiffkey Blue, Farrow & Ball, as before

Curtains Casamance (0844 369 0104 or casamance.com)

Pendants Flower Pot in Brass by Verner Panton, Cloudberry Living (0330 123 3301 or cloudberryliving.co.uk)

ENSUITE

Wall tiles Ice Grey honed marble, Mandarin Stone, as before

Floor tiles Nero riven slate, Mandarin Stone, as before

Brassware Crosswater (0345 873 8840 or crosswater.co.uk)

Basin Saneux, as before

Towel rail Bond brushed brass, Miller, as before

FAMILY BATHROOM

Wall tiles Black Zellige tiles, Emery & Cie, as before

Floor tiles Porcelain, Mandarin Stone, as before

Furniture Ikea, as before

Bath Roca (020 7610 9503 or uk.roca.com)

Basins Saneux, as before

Brassware Crosswater, as before

GIRL'S BEDROOM

Bed John Lewis (0345 604 9049 or johnlewis.com)

Paint Calamine, Farrow & Ball, as before

Wallpaper Sian Zeng (020 8691 7770 or sianzeng.com)

Pendant The French House, as before

Blind fabric St Jude's (01603 662951 or stjudefabrics.co.uk)

Storage unit For similar try The Old Cinema, as before

Rug Vintage Kilim rug, for similar try Nain Trading (020 3289 2834 or naintrading.co.uk)

BOYS' BEDROOM

Bunk beds Aspace (0800 021 9015 or aspace.co.uk)

Paint Stone Green, Dulux Trade Paint Expert (0333 222 7070 or duluxtradepaintexpert.co.uk)

Wall mural Skog by Sandberg (+46 321531660 or sandbergwallpaper.com)

Pendant Ambit from Muuto at Viaduct, as before

Rug Vintage Kilim rug, for similar try Nain Trading, as before

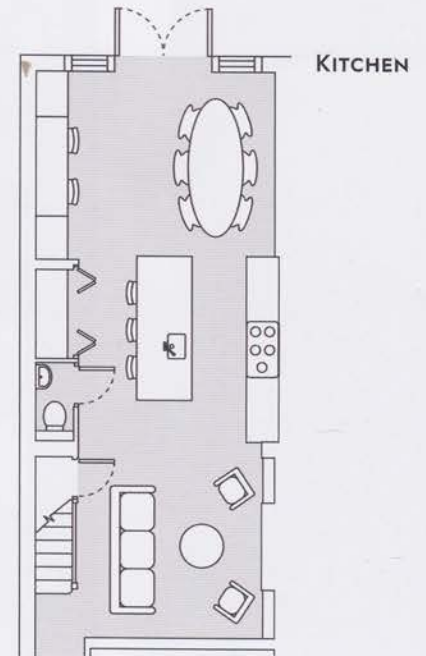
Wall cabinets Ikea, as before

COST

A similar kitchen by Yoko Kloeden Design would cost around £20,000, and a similar master bedroom with ensuite shower would cost around £16,000

THE PLANS

Replacing a half-width rear extension with a full-width one maximised the space and allowed Yoko to transform the groundfloor into a kitchen-dining-living space.



CHILDREN'S BEDROOMS

