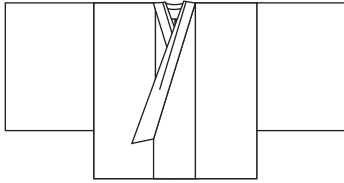
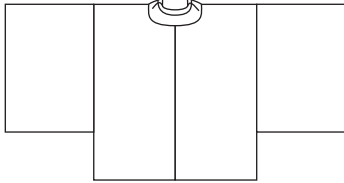


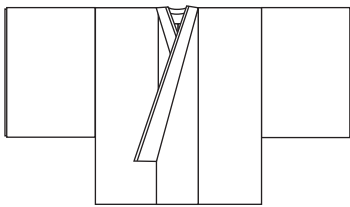
Hitoe-based garments



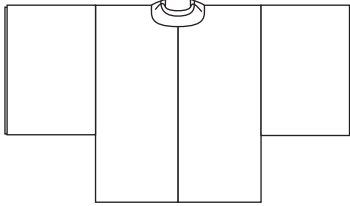
Hitoe (F)



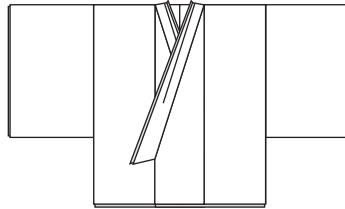
Hitoe (B)



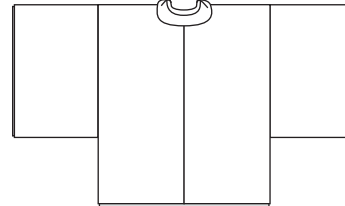
Akome (F)



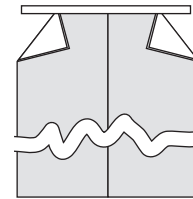
Akome (B)



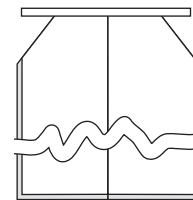
Shitagasane (F)



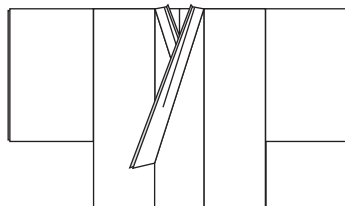
Shitagasane (B)



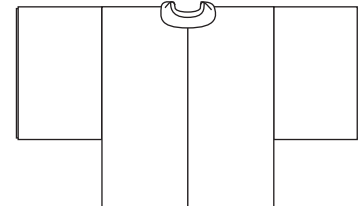
Kyō (F)



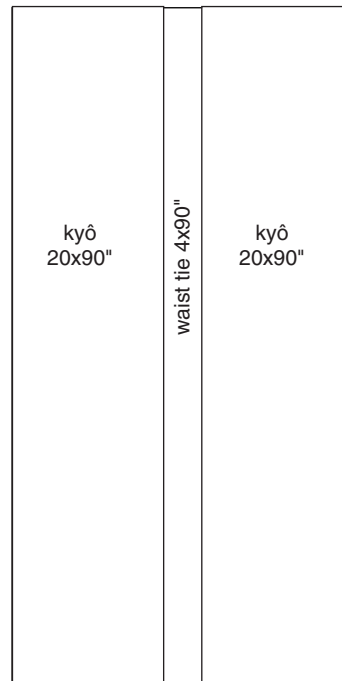
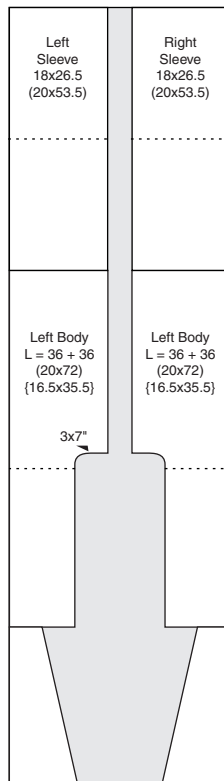
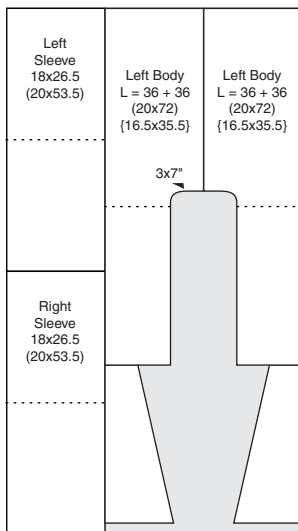
Kyō (B)



Shitagasane (F)



Shitagasane (B)



There are two numbers on the fabric layouts. The larger number is the size that the piece is cut to. The smaller number is the final size of the piece, with seams (and any folds) in place.