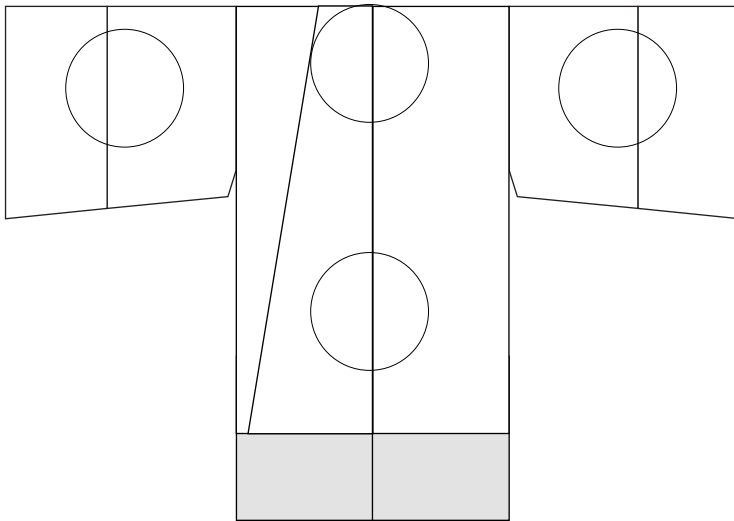
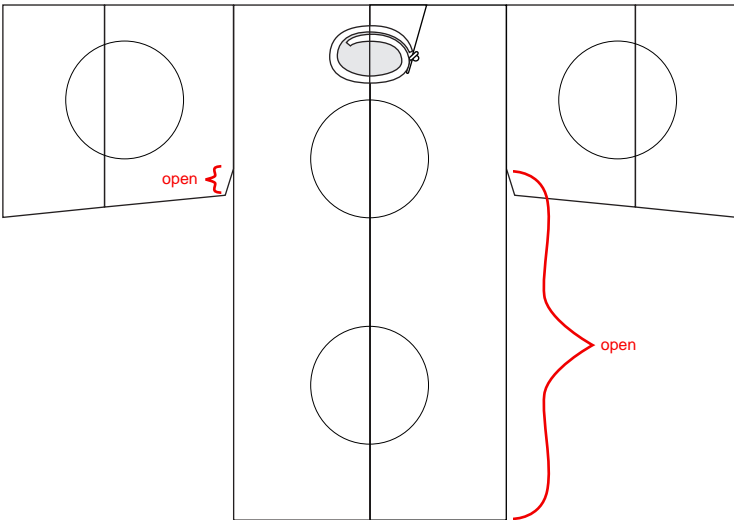


Kachie (based on Kettekí no h™)



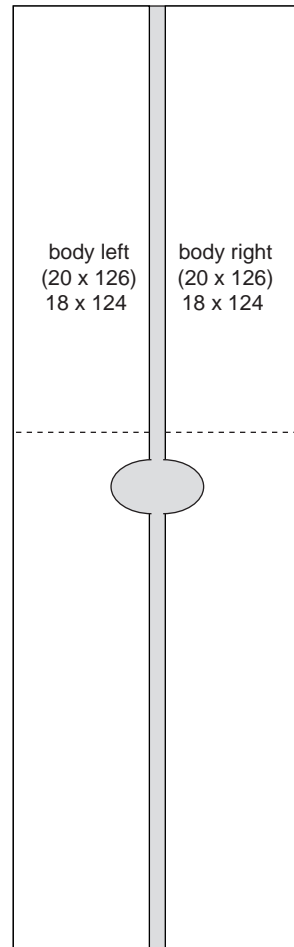
Front



Back

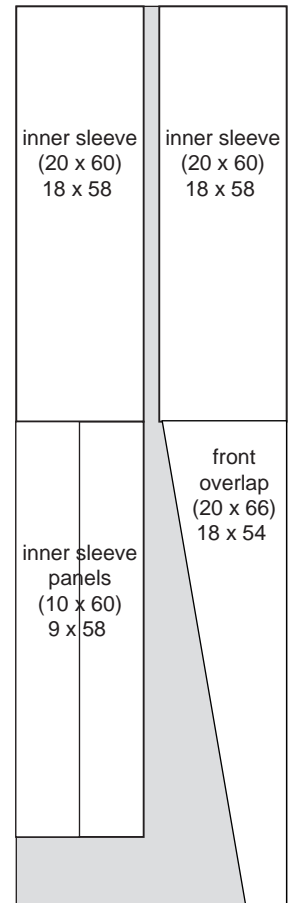
The color is pale blue-grey.
At marked locations is the crest of the guard unit, which should be silk-screened on in black.

Note that the sleeves are attached to the body for most of their length, but below the sleeves the body front and back are separate.



body left
(20 x 126)
18 x 124

body right
(20 x 126)
18 x 124



inner sleeve
(20 x 60)
18 x 58

inner sleeve
(20 x 60)
18 x 58

inner sleeve
panels
(10 x 60)
9 x 58

front
overlap
(20 x 66)
18 x 54

This cutting pattern assumes 45"-wide fabric. c.260" long.

The excess fabric is used to make the collar, and a 2"-wide self-belt which ties closed in front.

There are two numbers on the fabric layouts. The larger number is the size that the piece is cut to. The smaller number is the final size of the piece, with seams (and any folds) in place.