

The Theraphi Experience

rebalance | recharge | rejuvenate



The Theraphi

The Theraphi process is a holistic, non-invasive method that restores the cells of the body to an optimal state of health. It activates the body's healing regeneration system by producing a powerful bio-active field. Precise frequencies of hydrogen and phi-ratio harmonics are modulated and pass through a unique mixture of noble gases. The highly-charged plasma waveforms pass through your body resulting in a recharging of cells, DNA and spirit.

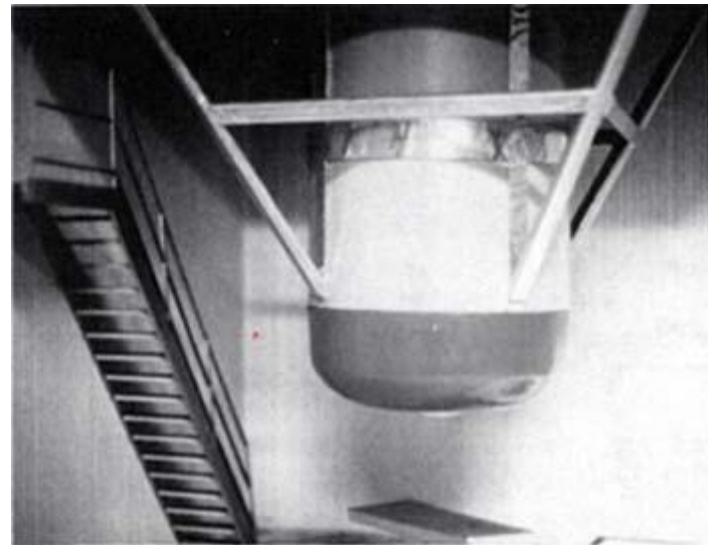
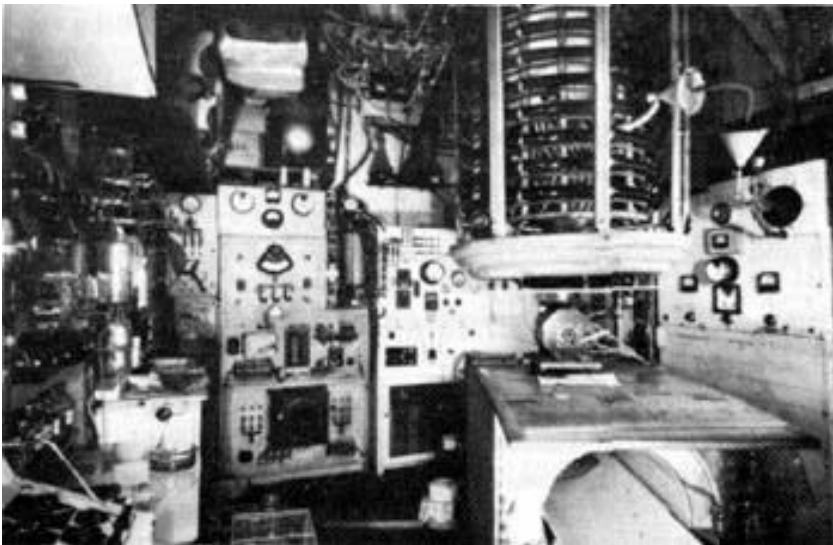


The Theraphi's two plasma tubes, with opposing spin polarities, emulate the super-coherence of a healthy living energy field. The waves converge in such a way that they focus and selforganize to create an increase of order and vitality, stimulating the natural healing process. The Theraphi is the next evolution in the healing technologies pioneered by Nikola Tesla, Royal Raymond Rife, George Lakhovsky and Antoine Priore. Our dedicated team of inventors and researchers have created with the Theraphi a truly unique wellness experience.

The Evolution

This modern-day application of regenerative electromagnetic therapy, has been in development for over 100 years since Nikola Tesla first suggested its uses. Pioneers such as Royal Raymond Rife, Alexander Gurwitsch and George Lakhovsky refined Tesla's theories and manufactured effective healing devices in the 1930-40's.

Then in France, Antoine Priore was the first to use 'phase conjugation' with large plasma tubes, which had spectacular and well documented effects (cancer remissions, faster healing times, etc.) The entire western world knew nothing of phase conjugation in the 1960's when Priore was getting his finest results.



The story of this remarkable work began in 1944 when Antoine Priore noticed some oranges which had been left in a room next to some electrical equipment. These oranges remained in a fresh state while others not near the electrical equipment became rotten and putrid.

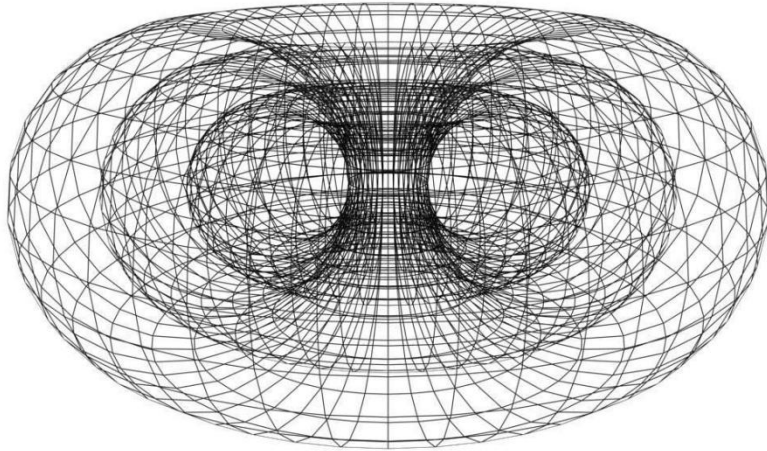
Tests made with the Priore machine on cancer tissues always caused total remission in all tissues exposed to the peach blossom violet color which the machine emitted. The device converted cancer cells back to normal cells and the “Priore signal” stimulated the normal cells, but did not hurt them at all. The device also clearly showed to be able to completely reverse clogging of the arteries and to lower the cholesterol levels to normal.

Many of the experiments and tests were done by prestigious members of the French Academy of Sciences, with a budget of over 16M, however no one knew of phase conjugation at the time. The science was not completely understood and funding was closed down. The machines of Antoine Priore were dismantled shortly after his death in the early 80's.

The original Priore plasma tubes were heavy, large, expensive and labor intensive. The Theraphi avoids these issues and uses solid-state emitters/mixers, the design is robust and easily transportable, and we now completely understand the physics involved, in fact we have advanced it to the 10th degree!

The frequency signature Priore used is substantially predicted on the Dan Winter's new book cover-which is how Theraphi team optimized the new prototype. They used Dan Winter's discovery of the previously unknown pure principle- which is that perfected broad spectral phase conjugation becomes negentropic and regenerative. This was proven in optics. Theraphi takes this principle even more broad spectral and thus more powerful than ever before.

The Phase Conjugation



As modern physics is discovering that everything around us and including us is composed of waves of energy. The Universe is awash in waves that, for the most part, interfere with each other in ways which diminish and cancel each other out. Phase Conjugation is a wave phenomenon whereby certain conditions, geometries and magnetic arrangements etc., cause waves to strengthen each other as they come together by adding and multiplying (cancelling any distortions). This is produced by the Theraphi's unique plasma that creates 'charge collapse' – a centripetal force taking waves to the center of all cell metabolism

The Principle

Natures Phi ratio is the fundamental principle that the Universe uses to multiply and divide itself on all levels. It is the fractal geometry of nature and consciousness, and operates at all levels of scale in the body. It is key to understanding how the Theraphi works and achieves its results. Phase conjugation is 'charge collapse' utilizing Golden Mean Ratio. It is the solution to maximum constructive wave interference, compression, implosion, phase conjugation and to creating the precise harmonics which produce the centripetal self-organizing 'negentropy' bioactive field. This ratio is nature's fractals and is used in all of its biology. It effects every cell of our body and is what makes the DNA's field electrically centripetal, and braids its genetic material. The energy signature of the Theraphi is the energy signature of a healthy living body.

Entropy

Entropy is the tendency towards disorder, fragmentation, wear and tear. It is associated with centrifugal force which disperses energy. In the body it lowers metabolism, cell voltage, telomere length and produces acidity, eventually impairing mood, motivation, mindfulness and motor skills. Physicists speak of entropy as a thermodynamic arrow of time along which physical systems invariably become ever more disordered.

Negentropy

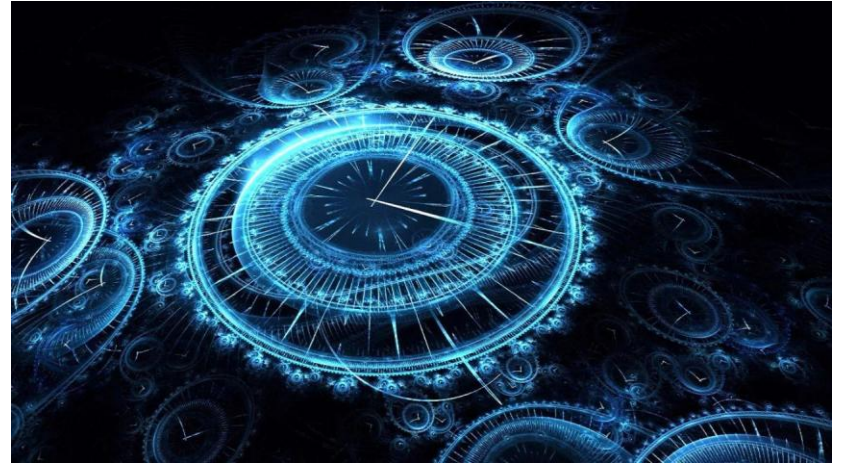
Negentropy is the reverse of entropy and considered the life organizing principle. It is the tendency toward increased order, which reverses disease, the aging process and supplies the centripetal charge compression to every cell of the body. Negentropy is the key to understanding the healing process of the Theraphi's unique technology involving phase conjugation.

Negentropy is reverse time, a process where the cell remembers its original state before disorder set in - a definition of rejuvenation and healing.

The author of the famous book "What is Life", Erwin Schrödinger (one of the fathers of quantum physics), defines negentropy as the remarkable ability of a living system, not only to avoid the effects of entropy production - as dictated by the second law of thermodynamics - but to do just the opposite, that is to increase organization, space-time structure), stored energy and coherence. Negentropy is also reverse time, a process where the cell remembers its original state before disorder set in (cell memory reversal), a definition of rejuvenation and healing.

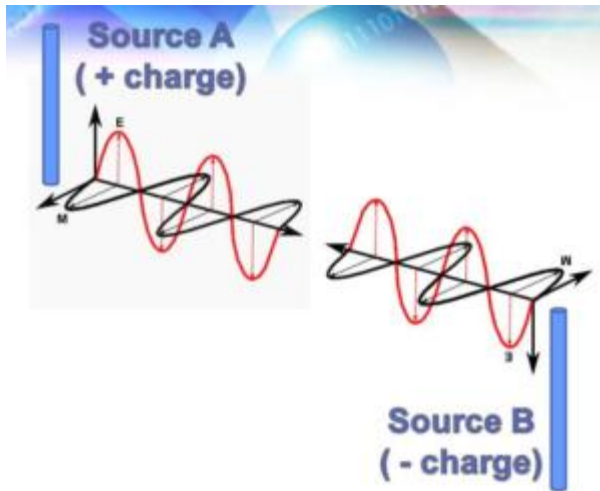
The Cell Memory Reversal

The actual "healing" system in the body is the cellular regenerative system. All living things are made up of cells. The cell is the smallest living thing that can do all the things needed for life. All cells must come from pre-existing cells, and have continuous repair and maintenance of their own existence. This is an electromagnetic system, but of a rare kind not used in our common power systems. Instead of using the common transverse EM waves, this system uses longitudinal EM waves and time-polarized EM waves.



A time-polarized EM wave is an energy current in the time domain, as in the quantum field theory. There we are introduced to time-polarized photons a "compression and rarefaction of the local rate of flow of time". Biological systems use longitudinal EM waves, frequency modulation, amplitude modulation, and "time-domain" electrodynamics which the Theraphi produces. In fact, it uses it to heal damaged cells, organs and tissues. The Theraphi system tailors the specific scalar longitudinal waveform, producing mitogenic radiation, primarily in the UV region of the spectrum but also involving other frequencies. It directly effects the cell's nucleus with phase conjugate (time reversed) waves, which helps restore the cells memory of being "healthy" - the process of Cell Memory Reversal.

Longitudinal EM waves

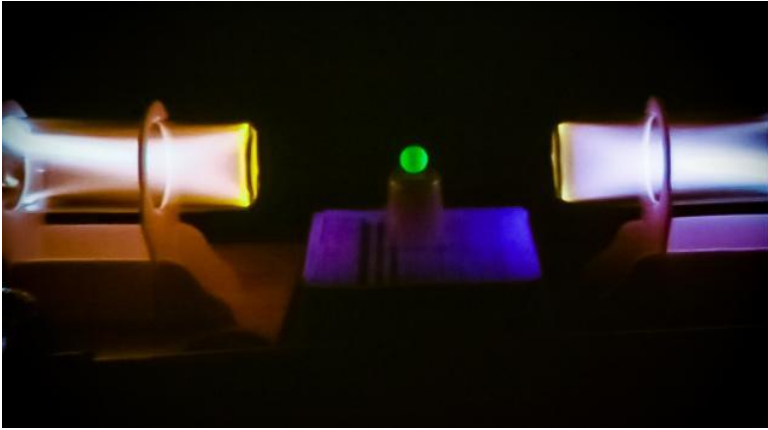


The Theraphi Device unique plasma generates longitudinal waves. Nikola Tesla showed he could send electrical energy without wires by using longitudinal waves. They can be used to send both information and energy and they can be imprinted with information patterns. The possibilities with, and uses of longitudinal (scalar) waves are endless and exciting. Unlike a transverse wave (like an ordinary radio or light wave) a scalar wave's amplitude does not fluctuate up and down. Instead, try to visualize it more like a vibration of electric potential expanding and contracting in the direction of propagation.

The scalar potential is comprised of sets of longitudinal EM phase conjugate wave pairs. One of each pair is time-reversed. This enables engineering of the waves to "pump" the cells of the body (with waves from the time domain) and actually time-reverse the cells back to a previous healthy condition.



In a nutshell



Having two plasma tubes, positioned on the table with opposite spin density, it produces a phase conjugate, longitudinal electromagnetic broad spectral and implosive “Biologic Negentropy” field that cascades into a focal point by utilizing nature’s golden mean phi ratio, allowing for the adding, multiplying, steering and collapse (centripetal) of our frequency modulated waveforms.

Theraphi uses scalar energy to correct the energy field distortions around the cells of the body, reprogramming them and allowing the cells and organs to work normally again.

The symmetrical coherent wave fields converge in such a way that they focus inward and become self-organized to create an increase in order and ‘charge’, referred to as ‘longitudinal wave acceleration’. This resulting wave field restores order to the body’s cellular regenerative system, referred to as Negentropy, which is the reverse of ‘Entropy’. In fact, the Theraphi Negentropy effect on the cells and tissues of the body, is the only true scientific definition we have of “Healing and Rejuvenation” and “Anti-Aging”. “Biologic Negentropy” is the definition of life, order, selfawareness, perception and memory.

Future of Medicine

Regenerative medicine, particular electromagnetic (EM) therapy, has had its ups and downs over the last 100 years. Pioneers such as Royal Rife, Tesla and Priore have been written out of our history books. Tesla used longitudinal waves to produce free energy which turned out to be bad for business. Priore's work was suppressed because of the hostility of the oncology community and the loss of funding due to the absence of 'acceptable physics' to describe the mechanism for the curative results. Royal Rife had well recorded clinical results with cancer and other ailments – only to be totally suppressed by the AMA.

Pain has been relieved by electricity since ancient times. There is enormous experimental evidence to support the claims that EM therapy like that of the Theraphi can help with cancer, leukemia, pain etc. yet there are no major funds available to create the needed clinical trials.

EM is reported to influence a wide variety of biological systems. In physical medicine, low frequency EMF has been clinically applied to healing wounds. Recent protocols based on electromagnetic fields have been developed as non-surgical minimally invasive treatments of tumors. In particular, short-duration electric pulses can induce important non-thermal changes in cell physiology, especially the permeability of the cell membrane, and the unique ability to selectively kill tumor cells without harming normal surrounding tissue.

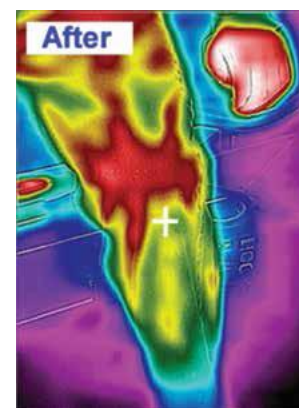
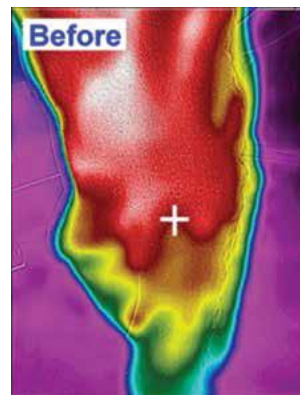
The Theraphi is a wellness device that can also be used for an entire community. For example, the Theraphi program can encourage neurological negentropy, which means an aging population will enjoy a calmer and clearer state of mind. The hallmark of robust mental health, which is within the power of Theraphi to help to achieve, is the optimization of the delicate balance of millions of neurotransmitters. We use non-invasive scalar energy to correct the energy field distortions around the cells of the body, reprogramming them and allowing the cells and organs to work normally again. The Theraphi's plasma allows the carrier wave to transmit 18 different healing

frequencies, (based on phi ratio and hydrogen) causing a field to envelop the person and affect every cell of the body.

There is potential for this technology to reverse genetic diseases to their original state. Because the phase conjugate wave is negentropic it can reverse entropic disease states in organisms. It can carry information into the cell nucleus that was not there originally, and possibly correct for inherited genetic damage, thus reversing birth defects. Priore also noted that mice after treatment seemed more youthful. Experiments also showed positive results for infectious diseases and suppressed immune systems.

Powerful anti-aging technology: If the genetic damage theory of aging is correct, then the Theraphi's phase conjugation would also correct the distorted standing wave signatures that occur over time and cause aging. It is our view that the centripetal field we have so potently assembled in our Theraphi technology is the ideal field effect to catalyze cells back toward de-differentiation (stem cell switching), - particularly if we look at the DNA as a 'phase conjugator.'

The Theraphi's growing team of international centers have often taken far infra-red pictures before and after Theraphi sessions, proving its strong anti-inflammatory properties.



With chronic and degenerative diseases becoming almost endemic in the United States and around the world, and with the failure of Western medicine to effectively treat these conditions – it is certainly time to look at new and innovative systems of healing. Due to the principles and concepts of negentropy, cell time-reversal, phase conjugation and implosion, we can create a new paradigm in self- healing, empowering a new humanitarian 'low cost' system of healthcare for present and future generations.

Come visit us for your own Theraphi Experience!

DISCLAIMER: All information provided in this brochure or the www.clpt.fit website is not expressed as medical advice. It is not meant to diagnose, treat, cure, or prevent any disease or replace conventional medical treatment. The content is provided “as is” and without representations or warranties of any kind, either express or implied. CLPT expressly disclaims all warranties, express or implied, with respect to any statement provided on www.clpt.fit website.