



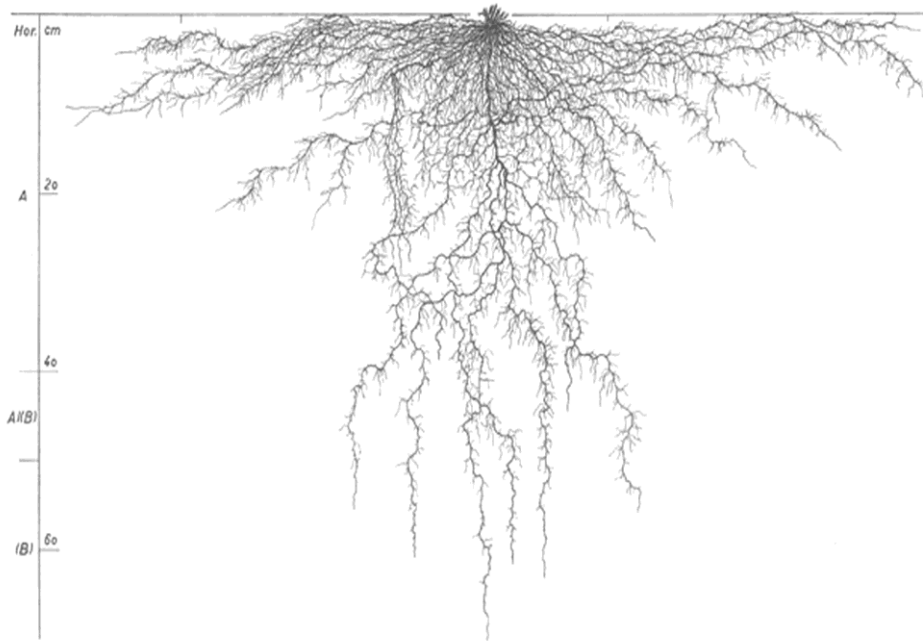
Podcast Episode Illustrations:
The Wisdom of Plants — An Earth Day Talk
by Craig Holdrege on April 22, 2024



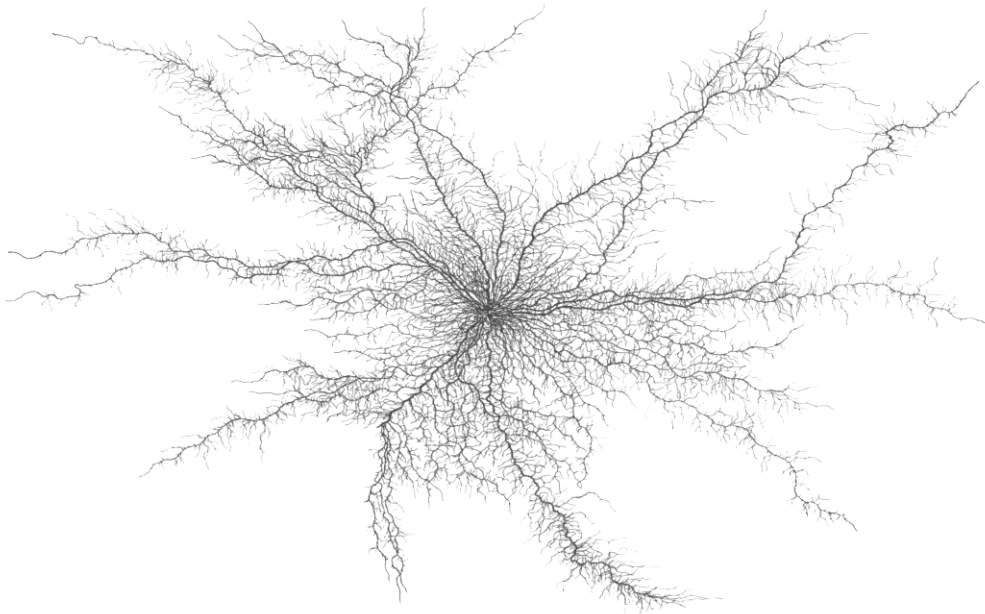
1. 12min 28sec: A drawing of meadow plants in Austria, showing their roots. (Kutschera, L. et al. 1997. *Wurzeln*. Staphia 49, p.249)

The illustrations in this handout are for personal use only and not for further distribution.

2a. 14min 30sec: Black nightshade (*Solanum nigrum*) root system viewed from the side. (Kutschera, L. 1960/2010. *Wurzelatlas*. Bd. 1, p. 460)



2b. 14min 43sec: Black nightshade (*Solanum nigrum*) root system (same as 2a) viewed from above. (Kutschera, L. 1960/2010. *Wurzelatlas*. Bd. 1, p. 461)



3. Roots and root hairs of a grass (corn) plant. (scale bar in a. and b. is 1cm; C. Holdrege photos)

a. 16min 10sec



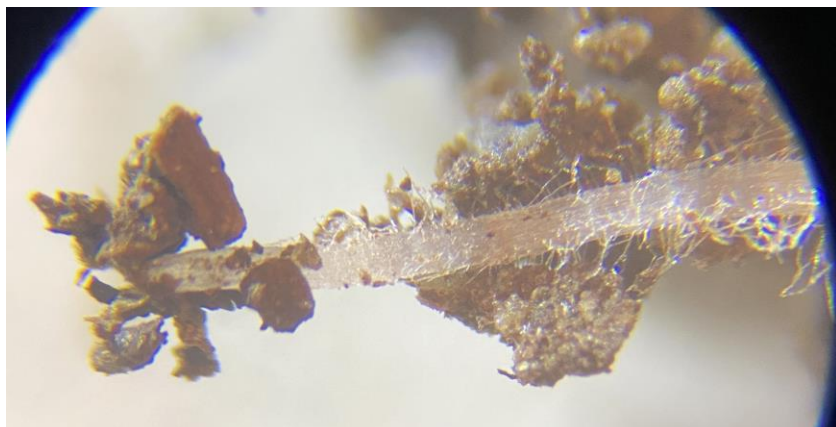
b. 16min 48sec: detail of a.



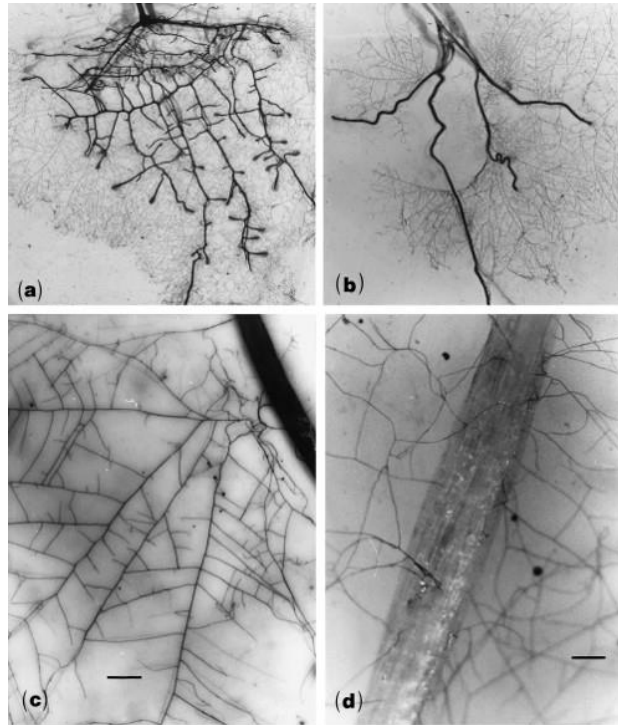
c. 17min 17sec: Two rootlets with root hairs under microscope.



d. 18min 20sec: Rootlet with root hairs.

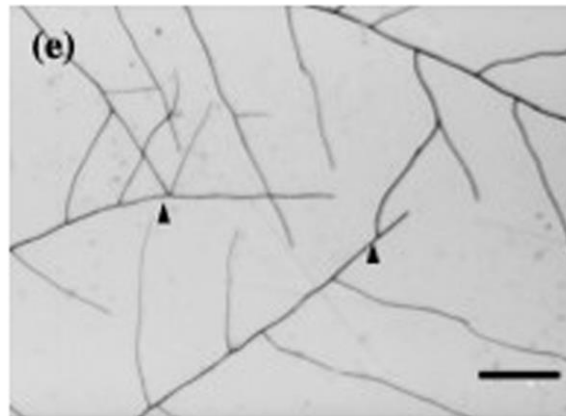


4a. 19min 50sec: Roots (darker) and mycorrhizal fungi (fine filaments).



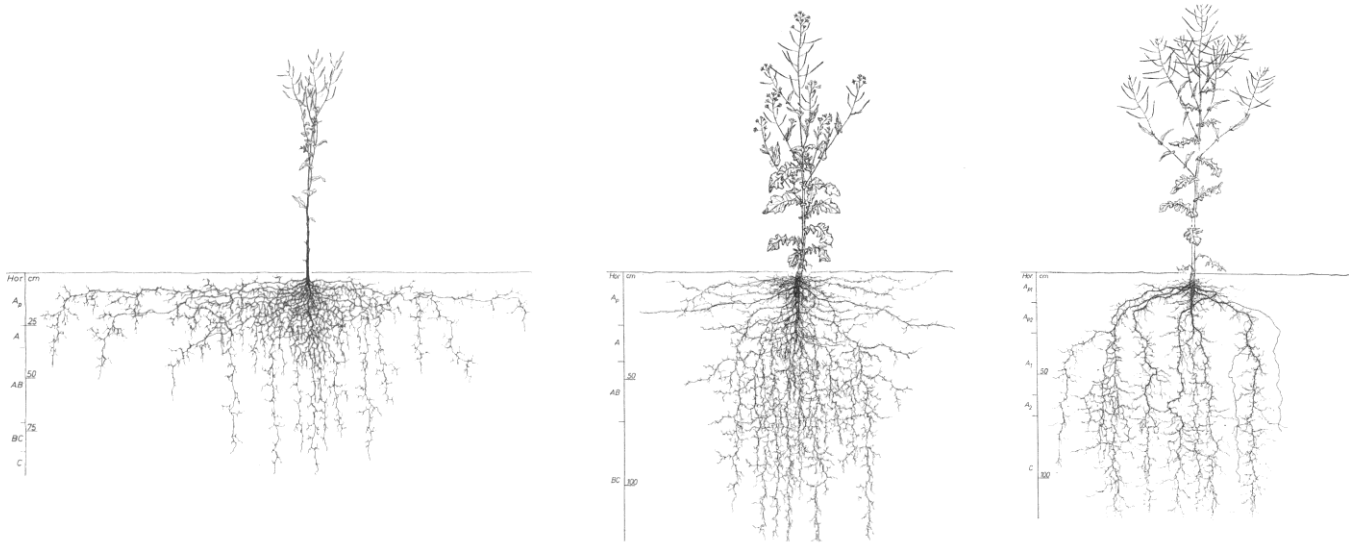
Giovannetti, M. et al. 2021. *New Phytologist* vol. 151, pp. 717-724

4b. 21min 10sec: Mycorrhizal fungi. The arrows show where the fungi that are connected to two different plants join to form one network.



Giovannetti, M. et al. 2004. *New Phytologist* vol. 164, pp. 175-81

5. 25min 10sec: Three specimens of rapeseed (*Brassica napus*) growing in different soil environments in Austria. From left to right: brown earth down to 35cm; brown earth all the way down; rich black earth and moister soil. (Kutschera, L. et al. 2009. *Wurzelatlas*. Bd. 7, pp. 384,385, 388)



6. 27min 54sec: Two specimens of alpine poppy growing in different conditions. (Kutschera, L. et al. 1997. *Wurzeln, Staphia* vol. 49, p.249)

