

# Sylvan Theater: Reimagining Our Nation's Premier Center Stage

OUR  
Monumental  
**MOMENT**

THE CAMPAIGN FOR THE NATIONAL MALL

---

# *The New Sylvan Theater*

## A DYNAMIC, WELCOMING, AND FLEXIBLE CENTER STAGE

This humble, historic, outdated performance space established more than a century ago on the grounds of the Washington Monument will be transformed into a vibrant civic and center stage for all.

The new Sylvan Theater, inspired by the celebration of America's Semiquincentennial in 2026, will be a space for performing arts, educational activities, classroom gatherings, and First Amendment activities that will make a lasting impact now and for future generations.

---

## OUR VISION + PROJECT GOALS

**1**

**Elevate and activate central space on the National Mall**

**2**

**Reimagine and rebuild a modern performance space including two unique stage areas**

**3**

**Provide valuable space for community, arts, educational, and First Amendment events**

**4**

**Provide a welcoming place where visitors and residents can gather to learn, recreate, and rest**

---

## SITE CHALLENGES

- More than 100 years old, now
- Too small in size and scale to meet demand
- Lack of seating and gathering spaces, particularly covered seating areas
- Last restored in 1970s; poor infrastructure, lighting, power, and sound system
- Lack of amenities and support services
- High demand for a multi-purpose, flexible-use venue to host a wide range of events year-round such as free performances, open-air classroom space, and First Amendment demonstrations

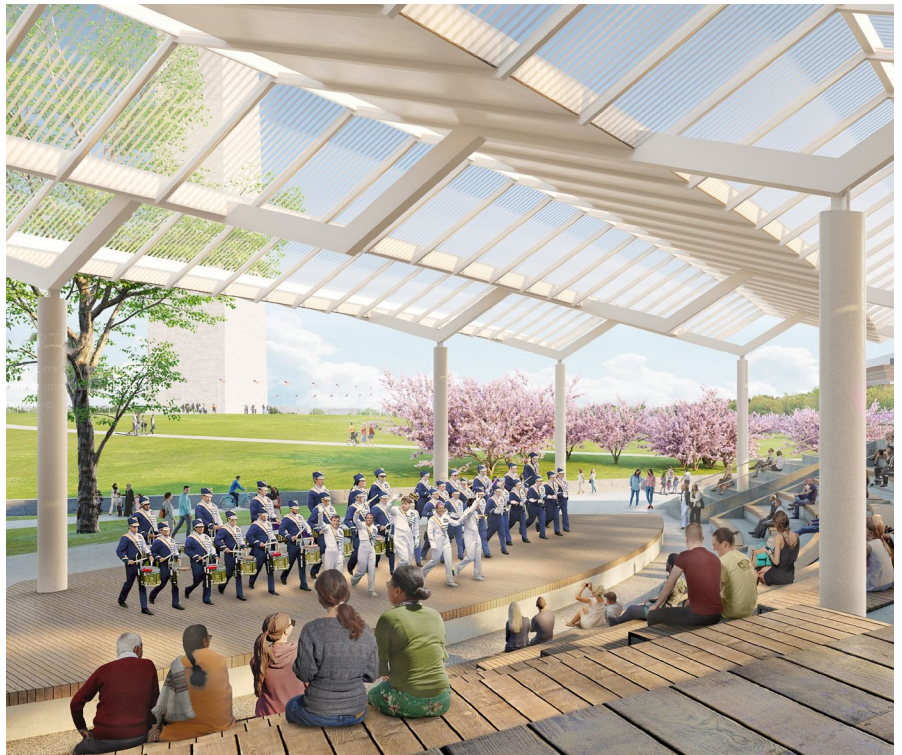


**Today's Sylvan Theater lacks basic features and often sits vacant and underutilized**



# SYLVAN REIMAGINED

- Two new flexible stages will accommodate diverse sizes and types of events and audiences.
- Expanded seating capacity will accommodate 250-350 people under covered area and 1000+ on the lawn for small or large community and arts performances.
- Covered theater and open seating areas will provide educators and class trips with much-needed open-air classroom space on the National Mall.
- Structures, seating, plantings and amenities provide for flexible use and enjoyment of the site year-round.
- New Welcome Center, concessions and exhibit space provide visitor services and amenities.
- The Trust for the National Mall and the National Park Service will partner with a third-party operator to manage operations of year-round special events.



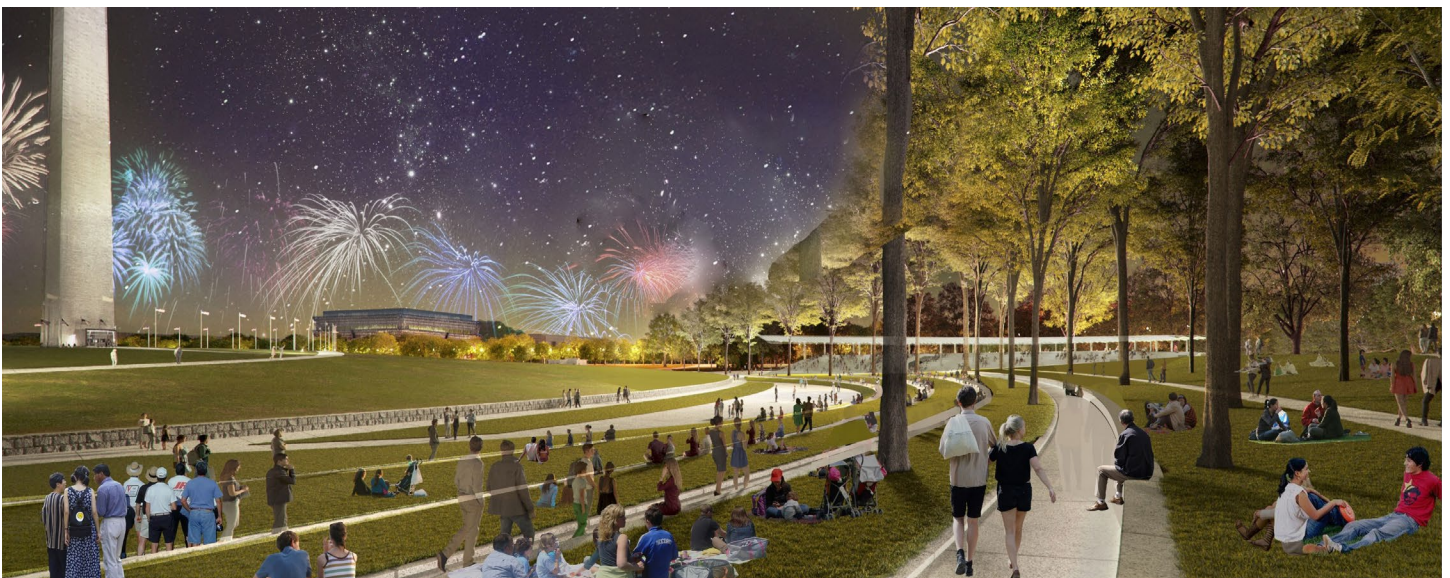
**Covered Theater: an all weather destination**



**New welcome center**

## ABOUT THE DESIGNERS: WEISS/MANFREDI

The World-renowned architecture LLP based in New York City will lead the design-build of this extraordinary project. Their acclaimed work includes the Brooklyn Botanic Gardens, Longwood Gardens and Olympic Sculpture Park.



**Open Amphitheater: a new performance horizon**





Future vision: New seating areas + plantings

CONSTRUCTION TIMELINE		COST ESTIMATES	
PHASE I 2021-2023	Pre-Construction: Business Plan, Design	Phase I (Pre-Construction)	COMPLETED
PHASE II 24 months	Pre-Construction: Environmental Assessment + Compliance, Commission Approvals and Contractor Selection	Phase II (Pre-Construction)	\$10,000,000
PHASE III 24 months	Construction + Project Management	Phase III Direct Construction Cost	\$76,000,000
PHASE IV TBD timeframe	<ul style="list-style-type: none"> <li>• Construction Complete</li> <li>• Public Engagement (Events, educational opportunities)</li> <li>• Ongoing care and maintenance</li> </ul>	Contingency + Contracted Project Management	\$11,400,000
		Operations + Management	\$9,740,000
		Phase IV (Post-Construction)	TBD
		TOTAL PROJECT BUDGET	*\$107,140,000
			* Estimated budget

## GIFT RECOGNITION ON THE NATIONAL MALL

Leadership donors will have the exclusive opportunity to be recognized in special commemorative signage with the National Park Service and Trust for the National Mall for the 2026 Semiquincentennial Celebration. Full funder recognition opportunities and details are available upon request.