

SOUTH FLORIDA ECOSYSTEM RESTORATION (SFER) PROGRAM

2022 UPDATE INTEGRATED DELIVERY SCHEDULE WORKING DRAFT

Tabitha Elkington, PhD
Strategic Program Manager
Programs and Project Management Division
Jacksonville District

October 19, 2022



US Army Corps
of Engineers®





TODAY'S WORKING DRAFT IDS BRIEF



- Schedule
- Public Engagement
- Overview – 2022 IDS Highlights
- IDS Purpose, Investments, Project Locator
- Top Line
- Project Schedule Updates
- System Operations
- Expanding the RECOVER Footprint
- Status of Yellow Book Components



2022 INTEGRATED DELIVERY SCHEDULE

INTEGRATED DELIVERY SCHEDULE 2022 UPDATE - WORKING DRAFT



- ✓ **05 August 2022:** Integrated Delivery Schedule 101 and Stakeholder Listening Session
- ✓ **19 August 2022:** Integrated Delivery Schedule, 68 CERP Components Overview and Listening Session with Stakeholders
- ✓ **01 September:** IDS Update presentation to SFER Task Force WG/SCG
- ☐ **19 October 2022:** Release of Working Draft 2022 IDS Update at SFER Task Force
- ☐ **18 November 2022:** Release of Final 2022 IDS Update at SFER Task Force Workshop



RECAP OF LISTENING SESSIONS



- **IDS 101 and Listening Session: 5 August 2022 (72 Attendees)**
- **68 Components Overview and Listening Session: 19 August 2022 (73 Attendees)**
 - ▶ Both were well attended and included a variety of stakeholders and public participants
 - ▶ Feedback: Appreciation expressed for the webinar series, the public engagement, and depth of information represented in the IDS from participants



2022 IDS UPDATE CONTINUED



Highlights of FY22 and FY23:

- Picayune Strand Restoration Project
 - ▶ Canal Plugging
- Broward County Water Preserve Areas
 - ▶ C-11 Impoundment
- Central Everglades Planning Project
 - ▶ Structures S-631, S-632, S-633 and Gap in L-67C Levee S Spoil Removal
 - ▶ Increase S-356E Pump Station and S-334E Gated Spillway
 - ▶ Gated Spillway S-355W
 - ▶ EAA Reservoir - Foundation and Cutoff Wall



2022 IDS UPDATE CONTINUED



Additional Highlights for FY22 and FY23

- The Southern Everglades Study will kick off in 2023
- In FY22 and FY23 operational planning efforts will be underway across all regions of the system
- CERP 68 Components updated to reflect completion of Yellow Book Component B, St. Lucie C-44 Basin Storage Reservoir
- RECOVER initiated development of a Southwest Florida module to apply RECOVER's programmatic evaluation and assessment framework to the Greater Big Cypress Basin



PURPOSE, INVESTMENTS, PROJECT LOCATOR AND LEGEND

INTEGRATED DELIVERY SCHEDULE 2022 UPDATE - WORKING DRAFT

SOUTH FLORIDA ECOSYSTEM RESTORATION | CENTRAL AND SOUTHERN FLORIDA COMPREHENSIVE EVERGLADES RESTORATION PLAN



The Comprehensive Everglades Restoration Plan (CERP) is the largest aquatic ecosystem restoration effort in the nation, spanning over 18,000 square miles, and is designed to improve the health of more than 2.4 million acres. The Integrated Delivery Schedule (IDS) is a forward-looking snapshot of upcoming planning, design, and construction schedules and programmatic costs at a "top" line level for the South Florida Ecosystem Restoration (SFER) Program – including CERP, Modified Water Deliveries to Everglades National Park, the Critical Projects Program, Kissimmee River Restoration, and non-CERP Central and Southern Florida (C&SF) projects.

The IDS reflects the sequencing strategy for planning, design, and construction and does not include costs for work completed in other fiscal years or land acquisition. The IDS does not require an agency action and is not a decision document. It is a tool that provides information to decision-makers – a living document that is updated as needed to reflect progress and/or program changes. The IDS synchronizes program and project priorities with the State of Florida and achieves the CERP restoration objectives at the earliest practicable time, consistent with funding constraints and the interdependencies between project components.

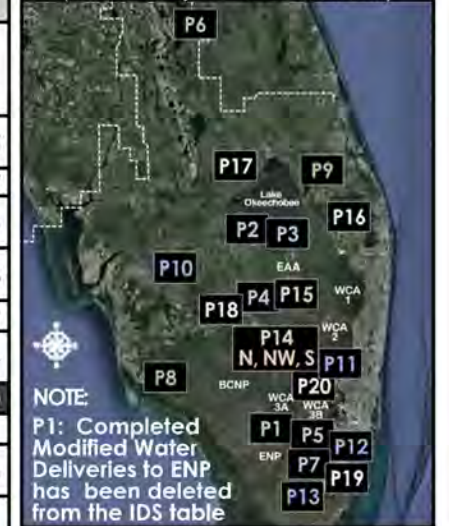
Although non-CERP and Foundation projects upon which the CERP is dependent are reflected in the IDS schedule, they are not included in the funding scenario. These projects are funded through other program authorities or by other entities. Restoration projects by others are also not included but are considered during planning.

Note: The IDS serves the purpose of the Master Sequencing and Implementation Plan (MISP) described in the original CERP plan (Yellow Book). Funding shown for Fiscal Year 24 (Fiscal Year, October 1- September 30) and beyond is only notional, representing approximate funding levels that would be needed to sustain the work displayed in the IDS for any particular fiscal year. The funding does not represent a commitment by the Administration to budget the amounts shown.

Projects completed in prior years have been removed from the 2022 IDS.

SOUTH FLORIDA ECOSYSTEM RESTORATION (SFER) INVESTMENT THROUGH FY2021 (Millions)					
	FEDERAL			NON-FEDERAL	GRAND TOTAL
	USACE	DOI	TOTAL	MULTIPLE AGENCIES	
Modified Water Deliveries to ENP	\$ 78	\$ 317	\$ 395	-	\$ 395
Critical Projects	\$ 89	-	\$ 89	\$ 88	\$ 177
Kissimmee River Restoration	\$ 405	-	\$ 405	\$ 401	\$ 806
C&SF Non-CERP	\$ 774	\$ 52	\$ 826	\$ 227	\$ 1,053
C&SF CERP	\$ 1,818	\$ 112	\$ 1,930	\$ 1,939	\$ 3,869
C&SF CERP, to be credited	-	-	-	\$ 1,183	-
TOTAL SFER	\$ 3,163	\$ 482	\$ 3,645	\$ 3,838	\$ 6,300
Herbert Hoover Dike	\$ 1,506	-	\$ 1,506	\$ 100	\$ 1,606
Restoration Strategies and ECP	-	-	-	\$ 2,229	\$ 2,229

IDS PROJECT LOCATIONS (NOT TO SCALE)
(Refer to Project Locator in Table)



NOTE:
P1: Completed Modified Water Deliveries to ENP has been deleted from the IDS table

Non-federal	Does not reflect budgetary development dollars or capability	Design, PPA Execution, Real Estate Acquisition
Federal	Expected WRDA year	Construction (Initiated by award of construction contract)
Fiscal Closeout	Project Implementation Report	Operational Plan
Monitoring	Project Implementation Report with Exemption	Operational Testing and Monitoring Period

SCAN THIS CODE FOR QUICK ACCESS TO A DIGITAL COPY OF THE IDS



IDS 2022: PLANNING ESTIMATES OF TOTAL SFER CONSTRUCTION COST

NOTE
BLUE OR
BLACK

NOTE
FISCAL
YEARS

NOTE "W" FOR
ANTICIPATED
WRDAs

PROJECT LOCATOR	PROJECT	YELLOW BOOK COMPONENT	FISCAL YEAR (DOLLARS IN MILLIONS) ¹												
			2021	2022 W	2023	2024 W	2025	2026 W	2027	2028 W	2029	2030 W	2031	2032 W	2033
	Planning Estimates Federal Construction Cost (SFER)++		\$ 250	\$ 352	\$ 1,128										
	Planning Estimates Non-Federal Construction Cost (SFER)++		\$ 258	\$ 329	\$ 343	\$ 796	\$ 1,160	\$ 907	\$ 905	\$ 787	\$ 462	\$ 277	\$ 117	\$ 38	\$ 25
	Planning Estimates Total Construction Cost (SFER)++		\$ 508	\$ 679	\$ 1,471										





IDS 2022: NON-CERP AND FOUNDATION PROJECTS

PROJECT LOCATOR	PROJECT	YELLOW BOOK COMPONENT	FISCAL YEAR (DOLLARS IN MILLIONS) ²													
			2021	2022 W	2023	2024 W	2025	2026 W	2027	2028 W	2029	2030 W	2031	2032 W	2033	
NON-CERP AND FOUNDATION																
P2	Herbert Hoover Dike ³	N/A Non-CERP	—	—	—•											
P3	Lake Okeechobee System Operating Manual ¹		○○○○○	○○○○○	○○•											
P4	Restoration Strategies ³		—	—	—	—	—•									
P5	Tamiami Trail Next Steps (TTNS) Phase 2 ³		•••••	—	—	—	—•									
P6	Kissimmee River Restoration (KRR) Construction		—•													
	KRR- Development of Operational Transition Plan/Evaluation Monitoring		●○○○○	○○○○○	○○○○○	○○○○○	○○○○○	○○○•△△△	△△△△△	△△△△△	△△△△△	△△△△△	△△△△△	△△△△△	△△•	
P7	C-111 South Dade Construction (complete)		●○○○○○	○○○○○●												
	C-111 South Dade - S-332 B Pump Station Replacement	●•••••	••••••	•••••	—	—	—	—	—	—	—	—	—	—	—	
	C-111 South Dade - S-332 C Pump Station Replacement	●•••••	••••••	••••••	••••••	●—	—	—	—	—	—	—	—	—	—	



HHD Rehabilitation



Tamiami Trail Bridge



Kissimmee River Restoration



IDS 2022: CERP GENERATION 1, WRDA 2007



PROJECT LOCATOR	PROJECT	YELLOW BOOK COMPONENT	FISCAL YEAR (DOLLARS IN MILLIONS) ²												
			2021	2022 W	2023	2024 W	2025	2026 W	2027	2028 W	2029	2030 W	2031	2032 W	2033
CERP GENERATION 1 (AUTHORIZED IN WRDA 2007)															
P8	Picayune Strand Restoration	OPE						●○○○○○	○○○○○●						
	Flood Protection Features - Conveyance		———	———	———	———●○	○○○○○●								
	Flood Protection Features - Levee		———	———	———	———●									
	Road Removal		———	———	———●										
	Canal Plugging		●●●●●	●———	———	———●									
P9	Indian River Lagoon-South														
	C-44 Reservoir	B	——●	○○○○○○	○○○○○●										
	C-44 STA and Pump Station	B	○○○○○○	○○○○○●											
	C-23/24 Reservoir North	UU Phase 1	●●●●●	●●●●●	●●●●●	———	———	———	———	———	———●	○○○○○●			
	C-23/24 Reservoir South	UU Phase 1	●●●●●	●●●●●	●●●●●	———	———	———	———	———	———●	○○○○○●			
	C-23/24 STA	UU Phase 1	●●●●●	———	———	———	———●	○○○○○●							
	C-25 Reservoir and STA	UU Phase 2		●●●●●	●●●●●	●●●●●	———	———	———	———	———●	○○○○○●			
C-23/C-44 Estuary Discharge Diversion			●●●●●	●●●●●	●●●●●	———	———	———	———	———	———	———			
Natural Water Quality Storage Areas, Muck Removal and Artificial Habitat Creation (Phase 2) - Director's Report and PPA - After Execution, SFWMD Leading Design and Construction				●●●●●	●●●●●										



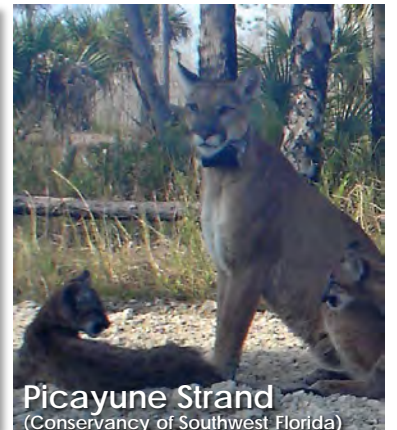
C-44 Reservoir



C-23/24 STA



Picayune Strand



Picayune Strand
(Conservancy of Southwest Florida)



IDS 2022: CERP GENERATION 2, WRDA 2014



PROJECT LOCATOR	PROJECT	YELLOW BOOK COMPONENT	FISCAL YEAR (DOLLARS IN MILLIONS) ²												
			2021	2022 W	2023	2024 W	2025	2026 W	2027	2028 W	2029	2030 W	2031	2032 W	2033
CERP GENERATION 2 (AUTHORIZED IN WRDA 2014)															
P10	Caloosahatchee River (C-43) West Basin Storage									●○○○○○	○○○○○●				
	C-43 Reservoir		———	———	———	———●	○○○○○○	○○○○○●							
	C-43 Pump Station	D	———	———●	○○○○○○	○○○○○●									
P11	Broward County Water Preserve Areas														
	C-11 Impoundment	Q	●●●●●●	●●●●●●	———	———	———	———	———	———	———	———●	○○○○○○	○○○○○●	
	WCA 3A and 3B Seepage Management	O			●●●●●●	●●●●●●	●●●●●●	●●●●●●	●●●●●●	●●●●●●	●●●●●●	○○○○○○			
	C-9 Impoundment	R				●●●●●●	●●●●●●	●●●●●●	●●●●●●	●●●●●●	●●●●●●	———●	○○○○○○	○○○○○○	○○○○○●
P12	Biscayne Bay Coastal Wetlands Phase 1	FFF, OPE, Phase 1							●○○○○○	○○○○○●					
	L-31 East Flow-way S-709 Pump Station (PS)		———	———	———●○○	○○○○○●									
	I-31 East Flow-way S-705 PS		———	———	———	———●○○	○○○○○●								
	L-31 East Flow-way S-703 PS		●●●●●●	———	———●○○	○○○○○●									
	L-31 East Flow-way S-710 PS, S-711 PS, and C-711W Seepage Canal		●●●●●●	———	———	———	———●○○	○○○○○●							
	Cutler Wetlands		●●●●●●	●●●●●●	———	———	———●	○○○○○●							
P13	C-111 Spreader Canal Western Project (Requires PPA – to be Reconciled in Parallel to BBSEER) SFWMD Led Design and Construction	WW, Phase I					●●●●●●	●○○○○○	○○○○○●						
PROJECT LOCATOR	PROJECT	YELLOW BOOK COMPONENT	2021	2022 W	2023	2024 W	2025	2026 W	2027	2028 W	2029	2030 W	2031	2032 W	2033



C-43 Reservoir Pump Intake Station



C-43 Reservoir Construction



Biscayne Bay Coastal Wetlands
(Kiewit)



IDS 2022: CERP GENERATION 4, WRDA 2020

PROJECT LOCATOR	PROJECT	YELLOW BOOK COMPONENT	FISCAL YEAR (DOLLARS IN MILLIONS) ²												
			2021	2022 W	2023	2024 W	2025	2026 W	2027	2028 W	2029	2030 W	2031	2032 W	2033
CERP GENERATION 4 (AUTHORIZED IN WRDA 2020)															
P16	Loxahatchee River Watershed Restoration Project	K, OPE		●●●●●●	●●●●										
	Flow-way 1 (M-1 Canal, G160/161 and Grassy Water Preserve)				●●●●●●	●●●●●●	●●●●	●●●●	●●●●	●●●●●●					
	Flow-way 2 (C-18 Impoundment)				●●●●●●	●●●●●●	●●●●●●	●●●●●●	●●●●	●●●●	●●●●	●●●●	●●●●	●●●●●●	●●●●●●
	Flow-way 2 (ASR Wells)									●●●●●●	●●●●●●	●●●●●●	●●●●	●●●●	●●●●●●
	Flow-way 3 (Gulf Stream West, Nine Gems, Culpepper, Moonshine, Hobe Grove, and Kitching Creek)			●●●●●●	●●●●●●	●●●●	●●●●	●●●●	●●●●	●●●●	●●●●	●●●●	●●●●●●	●●●●●●	





IDS 2022: PLANNING PROJECTS



PROJECT LOCATOR	PROJECT	YELLOW BOOK COMPONENT	FISCAL YEAR (DOLLARS IN MILLIONS) ²												
			2021	2022 W	2023	2024 W	2025	2026 W	2027	2028 W	2029	2030 W	2031	2032 W	2033
PLANNING PHASE															
P17	Lake Okeechobee Watershed Restoration Project ⁵ ASR Wells - Design and Implementation by SFWMD	A, GG	XXXXXX	XXXXXX	XXXX*										Dependent on Future WRDA Authorization. Construction and Funding TBD.
P18	Western Everglades Restoration Project ⁵	RR, CCC	XXXXXX	XXXXXX	XXXXXX*										Anticipate Authorization in WRDA 2024. Construction and Funding TBD.
P19	Biscayne Bay Southeastern Everglades Ecosystem Restoration (BBSEER) ⁵	BBB, FFF, HHH, WW, XX, OPE	XXXXXX	XXXXXX	XXXXXX	XXXXXX	XXXXXX*								Anticipate Authorization in WRDA 2026. Construction and Funding TBD.
P20	Southern Everglades ⁵	BB, CC, EEE, GG, QQ, S, U, YY, ZZ			XXXX	XXXXXX	XXXXXX	XXXXXX	XXXXXX	XXXX*					Anticipate Authorization in WRDA 2028. Construction and Funding TBD.
N/A	PENDING: Please refer to the CERP Components Map on Page 2 (Start of "Pending" CERP Component Feasibility Studies will be informed by the technical evaluations including input from the Science Coordination Group, RECOVER, periodic CERP update analysis, and engagement with the public.)	A, DDD, F, VV, X, Y, KK, LL, OPE(4), Phased (* D, H, M, W, AA, FF, GGG, OPE(1))	FOOTNOTES: 1: Once authorized, the design and construction of current planning projects will increase annual estimates and extend beyond FY2033. 2: FY 2022 and beyond includes allocation for Bipartisan Infrastructure Law funds. 3: Funded through other program authorities or by other entities. 4: Requires WCA-3 outler and conveyance structures to maximize operational flexibility. 5: Construction and funding TBD.												



SOUTH FLORIDA ECOSYSTEM RESTORATION AND GETTING THE WATER RIGHT - 2022 WORKING DRAFT
Page 2

THE RESTORATION FRAMEWORK

OPERATIONS IN SYNC WITH PROJECT DELIVERY
Restoration activities, including operational components recommended in the CERF, occur within the context of the larger, actively operating C&SF system. The C&SF Project includes 1,000+ miles of canals and levees and several hundred water control structures and pump stations providing the C&SF Congressionally authorized purposes of flood control, water supply, navigation, regional groundwater control, prevention of saltwater intrusion, recreation, and preservation of fish and wildlife.

COMPONENTS AND PROJECTS
The CERF identified 68 components that can contribute significantly to "getting the water right" and restoring the health of the ecosystem. Through a rigorous planning process, the components described in the CERF "Yellow Book" are combined into 50+ implementable projects that become part of the Integrated Delivery Schedule (IDS).

System Operating Manuals: The Critical Last Step in Getting the Water Right and Achieving Maximum System-wide Benefits
Operating Manuals are the set of documents that describe how to operate components of the C&SF Project and CERF projects to ensure the goals and purposes of the projects are achieved. Operating Manuals for the CERF consist of a System Operating Manual (SOM) and Project Operating Manuals (POMs). Draft Project Operating Manuals (DPOMs) are initially developed during the planning phase of project delivery.

- The SOM consists of 7 Volumes, organized according to geographical regions, that collectively provide a system-wide framework for the operation of components of the C&SF Project and CERF projects to ensure that projects function in a coordinated, systematic way.
- Updates to Operating Manuals: The Programmatic Regulators require that POMs be updated, as appropriate, for project construction and operational testing and monitoring phases, as well as when relevant CERF and non-CERF components come online. In turn, SOM Volumes are updated to include new or updated POMs.

EXPANDING THE RECOVER FOOTPRINT

The Comprehensive Everglades Restoration Plan (CERP) footprint is sub-divided into similar landscapes, each representing a Restoration, Coordination, Verification (RECOVER) module where monitoring is applied to address uncertainties and inform progress toward achieving CERF goals and objectives. In October 2021 RECOVER initiated development of a Southwest Florida Module to apply RECOVER's programmatic evaluation and assessment framework to the Greater Big Cypress Basin (GBCB). The GBCB is more than just a single self-contained watershed, the conservation lands within the region function as a central hub in the southern Florida peninsula that contain and connect multiple watersheds between the Big Cypress and Everglades ecosystems.

The overlap with the Greater Everglades and Southern Coastal Systems modules was purposeful. Overlap allows regional experts to work together in areas of the system that are more varied in character such as transitional areas between forested wetlands and swamps, prairies, and inland and coastal systems. Overlap increases coordination and communication between regions and enhances RECOVER's system-wide assessment mission.

Getting the water right throughout the GBCB could translate to more natural downstream flows to the tidal Reservations, Everglades National Park, Big Cypress National Preserve, Florida Panther National Wildlife Refuge, Fakahatchee Strand Preserve State Park and the upper southwestern coast. This new RECOVER Module gives the western regions a voice at the Everglades restoration table and potentially paves the way towards a path to improved evaluation and assessment tools. Formulation of this module increases the extent of Everglades wetland system-wide knowledge and increases the understanding of the needs associated with each region. It also provides a means to evaluate CERF performance across the entirety of the CERF footprint and gain knowledge to reduce uncertainties to further inform CERF design and implementation.

CERP COMPONENTS STATUS AND LOCATIONS BY RECOVER REGIONS

NOTE: Authorized projects are listed on the front page of this Integrated Delivery Schedule Placement

#	RR	YELLOW BOOK NAME AND CODE	COMPLETION PHASE / IMPLEMENTED
10	SC	Change Coastal Wetland Operations (L)	
11	GE	Site 1 Impoundment with ASR* (M)	
14	GE	C-4 Structures (I)	
19	LO	Taylor Creek/Nubbis Slough Storage and Treatment Area (W)	
25	GE	Modified L-1 and Wildlife Management Area Water Management Operations (DB)	
26	GE	Modified Kromeberger Waste Management Area Water Management Operations (DB)	
28	SC	C-111 Spreader Canal* (WU) - Phase 2 in Planning	
42	GE	Lower East Coast Water Conservation (AAA)	
44	GE	C-51* and Southern US Reservoir (C&S)	
46	LO	Lake Okeechobee Watershed Water Quality Treatment Facilities* (OPE)	
55	GE	Acme Basin* (OPE)	
57	NE	Lake Worth Lagoon Restoration (OPE)	
58	GE	Wingsberg Farms Wetlands Restoration (OPE)	
60	GE	Protect and Enhance Existing Wetlands Systems along Lox (Stratford Tract) (OPE)	
64	GE	Southern CREW Project Addition (OPE)	
65	GE	Lake Trafford Restoration (OPE)	
66	GE	Henderson Creek/Belle Meade Restoration (OPE)	
67	GE	Lake Park Restoration (OPE)	
68	SC	Florida Keys Tidal Restoration (OPE)	
69	ALL	Mexico Bay Erosion and Other Beach Rights (OPE)	
2	NE	St. Lucie/C-4 Basin Storage Reservoir (S)	
3	NE	Environmental Water Supply, Deliveries to St. Lucie Estuary (C)	
4	NE	Caloosahatchee Basin Storage Reservoir with ASR* (C)	
5	NE	Environmental Water Supply, Deliveries to Caloosahatchee Estuary (S)	
7	GE	EAA Storage Reservoir (C)	
8	GE	Everglades Rain-Driven Operations* (R)	
9	GE	L-3 Project (L)	
12	GE	Water Conservation Area 3A and 3B Levee Seepage Management (C)	
13	GE	Western C-1 Diversion Impoundment and Diversion Canal (C)	
14	GE	C-8 Stormwater Treatment Area Impoundment (S)	
18	GE	L-3/N Improvements for Seepage Management (V)	
19	GE	Adaptation L-3/S Structures* (AA)	
27	SC	Construction of S-35A and S Structures** (FF)	
28	SC	Rump Station G-404 Modification (I)	
32	SC	Modification to JPCS in southern portion of L-31N and C-111 (CO)	
33	SC	Decomartmentalization of Water Conservation Area (C&S)	
36	NE	C-23, C-24, C25 and Northfork and Southfork basins storage Reservoirs (LU)	
38	NE	Rat Marina L-1/W, Coopers Wildlife Management Area Hydropattern Restoration (OPE)	
61	SC	Biscayne Bay Coastal Wetlands* (OPE) - Phase 2 in Planning	
63	SC	Southern Dooden Gate Estates Hydrologic Restoration (OPE)	
1	LO	North of Lake Okeechobee Storage Reservoir (A)	
25	LO	Lake Okeechobee Aquifer Storage and Recovery (OO)	
34	GE	Flow to Central Water Conservation Area 3A (R)	
39	GE	North Lake Belt Storage Area (X)	
43	GE	South Miami Dade County Reuse (BS)	
44	GE	Big Cypress/L-28 Interceptor Modification (C&C)	
47	SC	Biscayne Bay Coastal Canals (FF)	
49	SC	West Miami Dade Reuse (HR)	
6	LO	Lake Okeechobee Regulation Scheduler* (F)	
15	GE	Central Lakebelt Storage Area (S)	
17	GE	Wing Drive Recharge Basin (U)	
20	GE	C-87 Backpumping to West Palm Beach Water Treatment Area (T)	
21	GE	Dose Broward Levee/Rennusua Wetlands (S)	
24	GE	Broward County Secondary Canal System (CO)	
30	GE	Loxahatchee National Wildlife Refuge Internal Canal Structures (C)	
31	GE	C-81 Regional Groundwater ASR (LL)	
37	GE	Ram Beach County Agricultural Reserve Reservoir (VV)	
38	GE	Divert WCA-2 Inflow/Central Lake Belt Storage (V)	
45	GE	Divert WCA-2 Inflow/Central Lake Belt Storage Area (Z)	
46	NE	Caloosahatchee Backpumping with STA (DD)	
48	GE	Flows to Eastern Water Conservation Area (EE)	
49	LO	Lake Okeechobee Phosporus, Sediment, and Acid Phosphorus Removal (OPE)	
52	LO	Lake Inokanga Regulation Soneau Modification (OPE)	
54	SC	Accroachment Restoration Plan (OPE)	
64	SC	Restoration of Pinegall & Parowood hammocks in C-111 Basin (OPE)	
65	SC	Re-use of Miami-Dade Water Supply, Deliveries (S)	
68	SC	Seminole Tribe Big Cypress Water Conservation (R)	
69	SC	Ram Beach County Wetlands-based Water Reclamation (ST)	

IDS CONSTRUCTION RELEVANT* SCHEDULES FOR SOM VOLUME, WATER MANAGEMENT OPERATING CRITERIA (DPOM, POM, WCP), NEPA, AND MODELING

Existing water control manuals (WCM), water control plans (WCP), and POMs will continue to govern operations until SOM Volumes are finalized.

SOM VOLUME 2: KISSIMMEE RIVER- LAKE ISTOKPOGA

- 12 Lake Okeechobee Watershed Restoration Project DPOM (P17)
- 12 Kissimmee River Restoration WCP: Increment 1: Temporary Diversion (P1)
- 12 Development of Operational Transition Plan (F)

SOM VOLUME 3: LAKE OKEECHOBEE - EAA

- 12 Lake Okeechobee - EAA WCP: LOSOM (P2; P3)
- 12 C-43 West Basin Storage POM Update (P1)
- 12 IRL-South POM Update: C-44 Reservoir STA (P9)
- 12 IRL-South POM Update: C-23/C-44 Interconnect: C-44 Reservoir STA (P9)
- 12 CEPP and EAA Phase DPOM: EAA Reservoir A-2 STA (P15)
- 12 CEPP EAA Phase P14 Update: A-2 STA Pre-Reservoir (P15)
- 12 CEPP EAA Phase POM Update: CEPP North, EAA, Reservoir (P4; P14N; P15)

SOM VOLUME 4: WCAs: ENP-SDCS (COP- P1; P7; P13)

- 12 Combined Operational Plan WCP: Update for 8, SSMA (P1)
- 12 Western Everglades Restoration DPOM (P1)
- 12 CEPP and EAA Phase DPOM Update: CEPP South Contract 1 Interim Operations (P14)
- 12 CEPP DPOM Update: TINS Phase 2, CEPP South, CEPP North (P5; P7; P14S; P14N; P14NW)

SOM VOLUME 5: EAST COAST CANALS

- 12 IRL-South DPOM Update: C-23/C-24 Reservoirs STA; C-25 Reservoir STA (P9)
- 12 IRL-South POM Update: C-23/C-24 STA (P9)
- 12 Loxahatchee River Watershed Restoration Project DPOM (P1)
- 12 Broward County WFA DPOM Update: C-11 Impoundment (P11)
- 12 Broward County WFA DPOM Update: C-24 and 58 Seepage Management (P11)
- 12 Broward County WFA DPOM Update: C-9 Impoundment (P11)
- 12 Biscayne Bay Coastal Wetlands POM Update: L-31E Flow-way, Cutler Wetlands (P12)
- 12 Biscayne Bay Southeastern Everglades Ecosystem Restoration DPOM (P1)

SOM VOLUME 7: SOUTHWEST FLORIDA

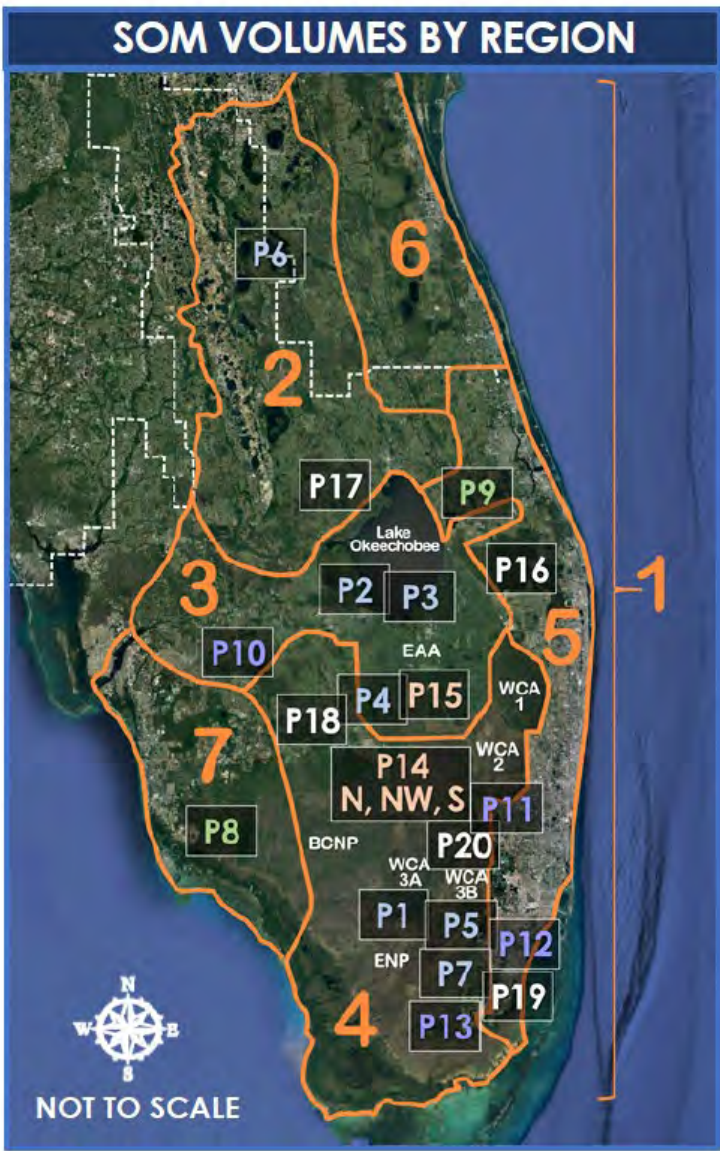
- 12 Playoune Strand Restoration Project POM Update: River Canal Plugging (P8)
- 12 Playoune Strand POM Update: Flood Protection Features: Foka Union Canal Plugging (P8)

*SOM Volume 1 System-Wide Operational Framework for C&SF and CERF and SOM Volume 6 (Upper St. Johns River Basin) will not have CERF POMs.

SOUTH FLORIDA ECOSYSTEM RESTORATION INTEGRATED DELIVERY SCHEDULE



IDS 2022: GETTING THE WATER RIGHT



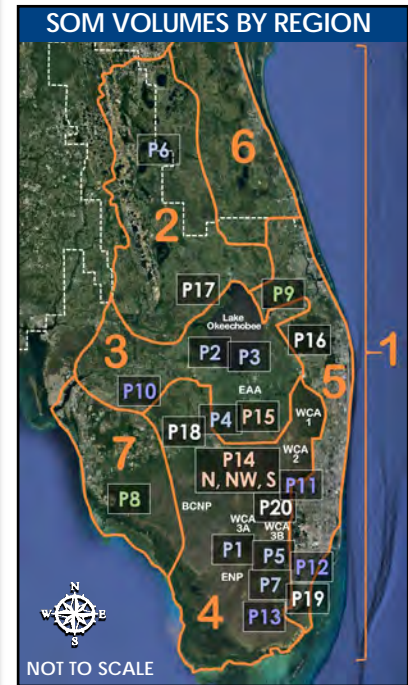
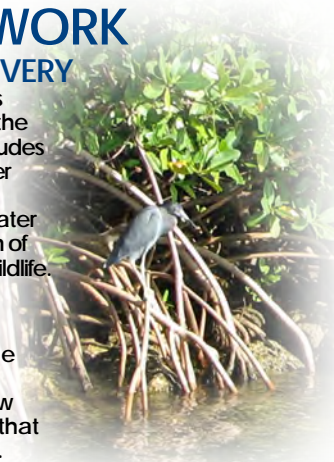
THE RESTORATION FRAMEWORK

OPERATIONS IN SYNC WITH PROJECT DELIVERY

Restoration activities, including operational components recommended in the CERP, occur within the context of the larger, actively operated C&SF system. The C&SF Project includes 1,000+ miles of canals and levees and several hundred water control structures and pump stations providing the C&SF Congressionally authorized purposes of flood control, water supply, navigation, regional groundwater control, prevention of saltwater intrusion, recreation, and preservation of fish and wildlife.

COMPONENTS AND PROJECTS

The CERP identified 68 components that can contribute significantly to “getting the water right” and restoring the health of the ecosystem. Through a rigorous planning process, the components described in the CERP “Yellow Book” are combined into 50+ implementable projects that become part of the Integrated Delivery Schedule (IDS).

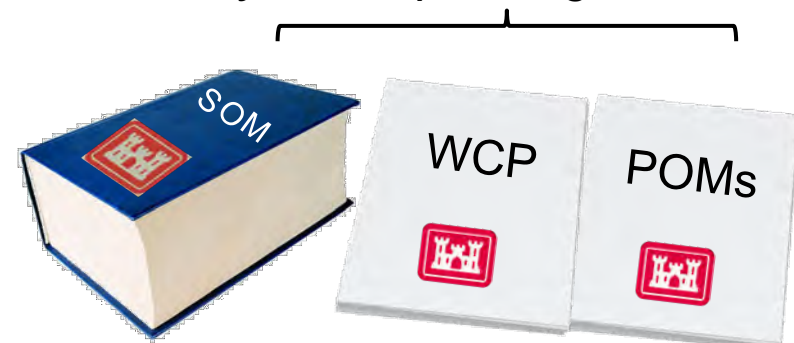


System Operating Manuals: The Critical Last Step In Getting the Water Right and Achieving Maximum System-wide Benefits
 Operating Manuals are the set of documents that describe how to operate components of the C&SF Project and CERP projects to ensure the goals and purposes of the projects are achieved. Operating Manuals for the CERP consist of a System Operating Manual (SOM) and Project Operating Manuals (POMs). Draft Project Operating Manuals (DPOMs) are initially developed during the planning phase of project delivery.

- The SOM consists of 7 Volumes, organized according to geographical regions, that collectively provide a system-wide framework for the operation of components of the C&SF Project and CERP projects to ensure that projects function in a coordinated, systematic way.
- Updates to Operating Manuals: The Programmatic Regulations require that POMs be updated, as appropriate, for project construction and operational testing and monitoring phases, as well as when relevant CERP and non-CERP components come online. In turn, SOM Volumes are updated to include new or updated POMs.



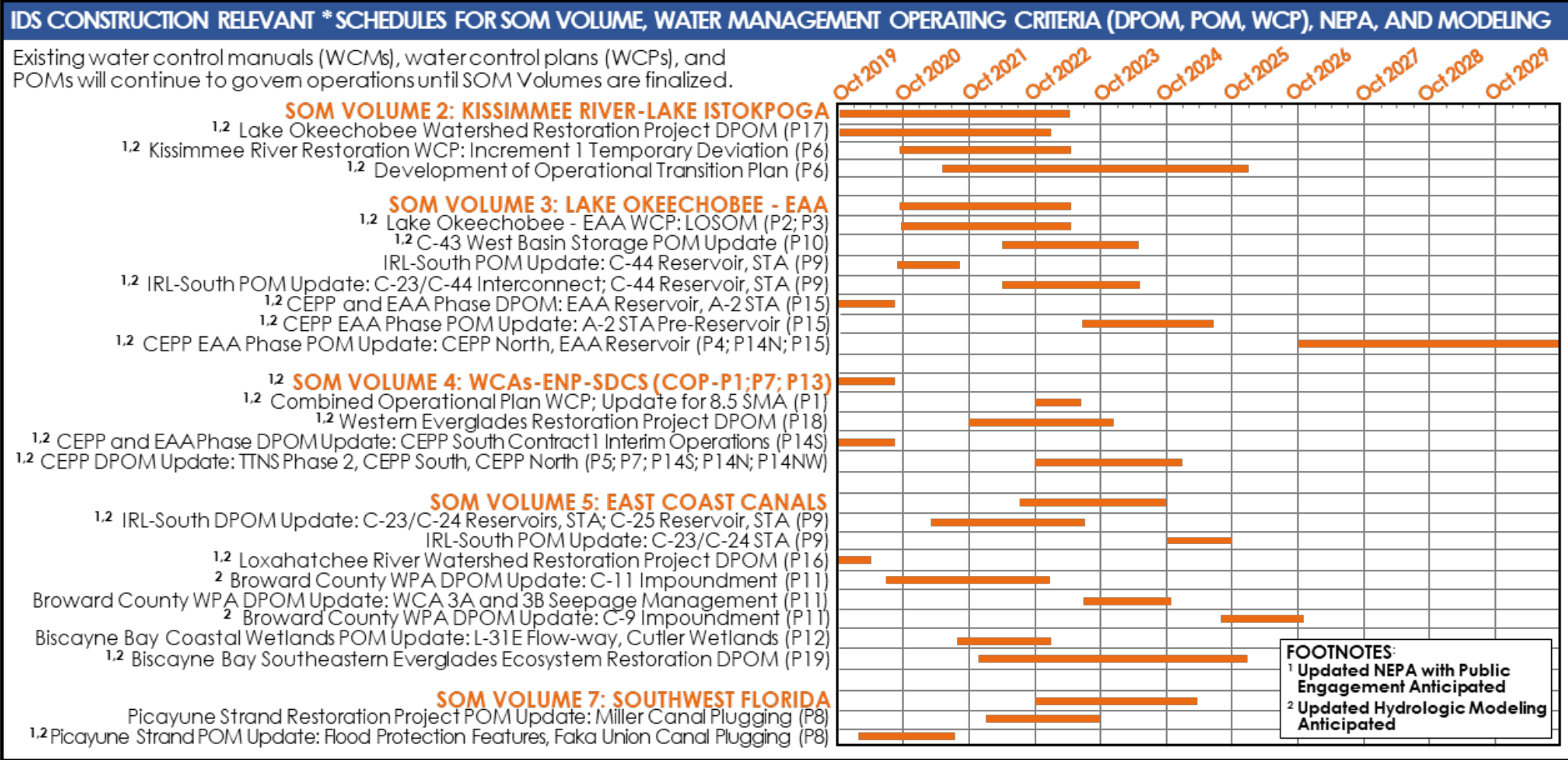
System Operating Manual



NOTE: Project Locators correspond to IDS Front Placemat



IDS 2022: GETTING THE WATER RIGHT



*SOM Volume 1 (System-Wide Operational Framework for C&SF and CERP) and SOM Volume 6 (Upper St. Johns River Basin) will not have CERP POMs.

System Operating Manuals: the Critical Last Step in Getting the Water Right and Achieving Maximum System-wide Benefits



IDS 2022: EXPANDING THE RECOVER FOOTPRINT



Big Cypress National Preserve

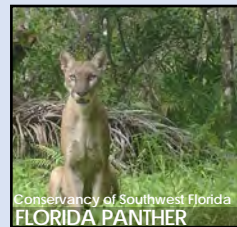
EXPANDING THE RECOVER FOOTPRINT



The Comprehensive Everglades Restoration Plan (CERP) footprint is sub-divided into similar landscapes, each representing a RESToration, COordination, VERification (RECOVER) module where monitoring is applied to address uncertainties and inform progress toward achieving CERP goals and objectives. In October 2021 RECOVER initiated development of a Southwest Florida Module to apply RECOVER's programmatic evaluation and assessment framework to the Greater Big Cypress Basin (GBCB). The GBCB is more than just a single self-contained watershed, the conservation lands within the region function as a central hub in the southern Florida peninsula that contain and connect multiple watersheds between the Big Cypress and Everglades ecosystems.

The overlap with the Greater Everglades and Southern Coastal Systems modules was purposeful. Overlap allows regional experts to work together in areas of the system that are more varied in character such as transitional areas between forested wetlands and sawgrass prairies, and inland and coastal systems. Overlap increases coordination and communication between regions and enhances RECOVER's system-wide assessment mission.

Getting the water right throughout the GBCB could translate to more natural downstream flows to the Tribal Reservations, Everglades National Park, Big Cypress National Preserve, Florida Panther National Wildlife Refuge, Fakahatchee Strand Preserve State Park and the upper southwestern coast. This new RECOVER Module gives the western regions a voice at the Everglades restoration table and potentially paves the way towards a path to improved evaluation and assessment tools. Formulation of this module increases the extent of Everglades wetland system-wide knowledge and increases the understanding of the needs associated with each region. It also provides a means to evaluate CERP performance across the entirety of the CERP footprint and gain knowledge to reduce uncertainties to further inform CERP design and implementation.



Conservancy of Southwest Florida
FLORIDA PANTHER

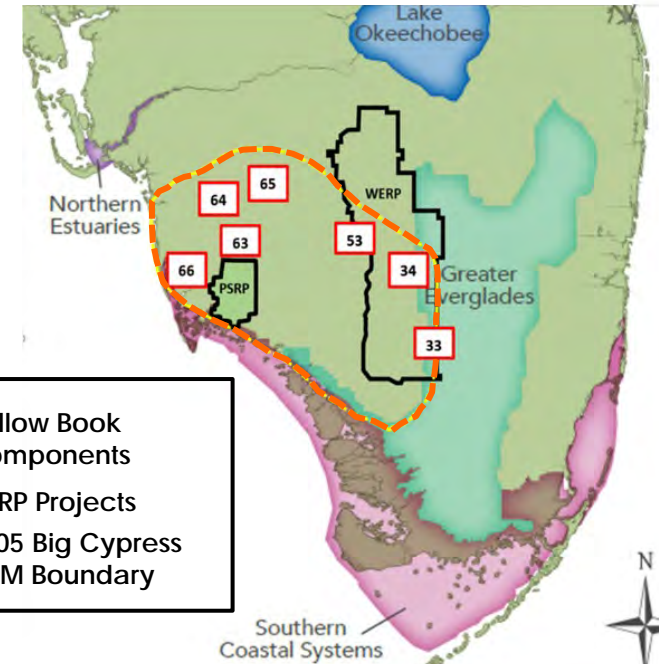


WOOD STORK



POND CYPRESS

Yellow Book Components		
Number	Name	Code
33	Decomartmentalization of WCA 3A	QQQ
34	Flow to Central WCA 3A	RR
44	Big Cypress/L-28 Interceptor Modifications	CCC
63	Southern Golden Gate Estates Hydrologic Restoration	OPE
64	Southern CREW Project	OPE
65	Lake Trafford Restoration	OPE
66	Henderson Creek/Belle Meade Restoration	OPE



53 Yellow Book Components

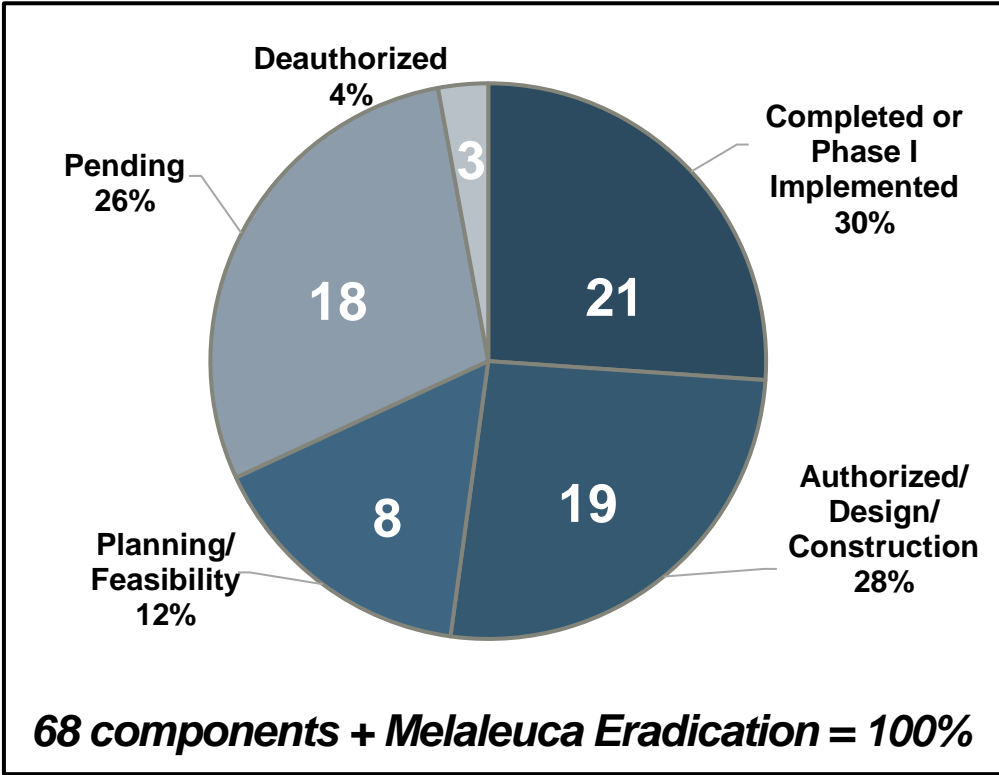
— CERP Projects

- - - 2005 Big Cypress CEM Boundary





IDS 2022: 68 COMPONENTS OVERALL STATUS



Note: The category of "Complete" includes components where at least one separable feature of the component has been completed/implemented. May include instances where there is a Phase II that has not yet been implemented.

Terminology Overview:

- **Completed or Phase I Implemented:** partially or completely constructed and operational
- **Authorized/Design/Construction:** project approved by WRDA. Start or continue implementation activities
- **Planning/Feasibility:** currently evaluated for future implementation
- **Deauthorized:** due to lack of funding and activity. May be considered in a future PIR
- **Pending:** to be considered in an upcoming study

- The Yellow Book continues to be our roadmap
- RECOVER Regions





USACE | JACKSONVILLE DISTRICT

SOUTH FLORIDA ECOSYSTEM RESTORATION PROGRAM



THANK YOU!