



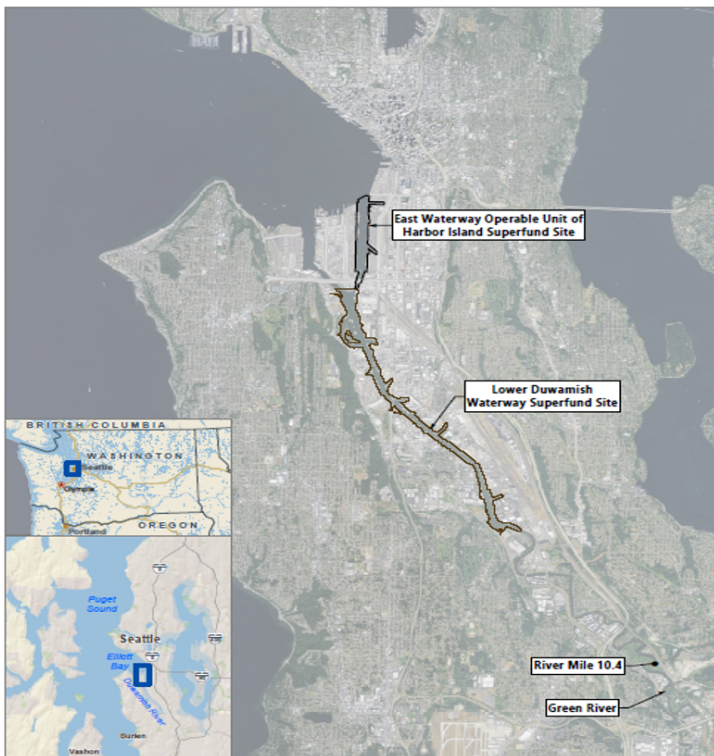
What is the East Waterway (EW)?



The East Waterway is part of the Harbor Island Superfund site - a separate Superfund site from the Lower Duwamish Waterway. The Spokane St. Bridge, a popular fishing bridge within immigrant communities, is located in the East Waterway site.

The East Waterway is a part of the Duwamish River. They are biologically connected as one river, and influenced by the tides. What flows through one flows through the other.

What separates them is government regulation by the EPA, not nature.



The EPA is currently deciding what the cleanup levels for the East Waterway will be. As of now, the EPA is considering potential cleanup levels that allow for high levels of hazardous pollution in the mud. Compared to the levels set for the Lower Duwamish, these potential levels are not the most health protective for Duwamish Valley communities and can put them at risk!

DRCC is demanding:

Consultation with affected EJ communities, including people who live in the Duwamish Valley, Tribes, and Fishers.

Consistency: Use of the same standards as the Lower Duwamish Waterway cleanup in the 2014 ROD.

Concurrence: Follow Washington State's health protective regulations and guidance for waterbodies and standards.

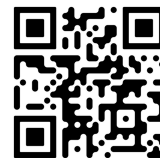
What YOU can do:

Sign our petition: <https://www.change.org/duwamishcleanuptriplethreat> (use QR code above too). And also email contact@drcc.org and put "East Waterway" in the subject line. We will add you to a community contact list for future actions to demand environmental justice from the EPA!



What DRCC is doing for Duwamish Valley communities

For more information visit www.DRCC.org



DRCC is fighting for a fair and just cleanup on the East Waterway

We are committed to a cleanup of the East Waterway that is healthy and just for all Duwamish Valley communities and are currently taking action in these ways:

- We listen to community voice and present relevant information
- Hold weekly meetings with elected officials, Responsible Parties, local, state, and federal agencies, and Earth Justice
- Work with national EPA environmental justice experts

The cleanup EPA is currently considering on the East Waterway represents a betrayal of the Duwamish River community. The EPA conducted studies that it developed in closed-door meetings with polluters and with those responsible for cleanup costs

*The Duwamish River must be recovered to standards that support our community and fishing for future generations. We **demand health justice**, especially for community members who have been historically marginalized, silenced, and disproportionately burdened with the legacy pollutants that have given rise to this cleanup.*

The cleanup EPA is considering:

—Fails to meet human health standards - this signals that some communities are disposable!

—Fails on protecting salmon and orca - these are integral to our Puget Sound!

—Fails scientific standards and does NOT meet state and federal regulations

—Fails to meet environmental justice commitments to Duwamish Valley communities

Lower Duwamish and East Waterway Superfund Sites



What YOU can do:

Sign our petition: <https://www.change.org/duwamishcleanuptriplethreat> (use QR code above). And also email contact@drcc.org and put "East Waterway" in the subject line. We will add you to a contact list for future actions to demand environmental justice from the EPA!

