

# Lower Duwamish Cleanup Sites Update



## CONTACTS & INFORMATION

### Public Involvement Coordinator:

Kelsey Ketcheson  
kkt461@ecy.wa.gov  
206-594-0125

For more information  
about site cleanups  
and source control,  
visit our website:

[http://www.ecy.wa.gov/  
programs/tcp/sites\\_bro  
chure/lower\\_duwamish/  
lower\\_duwamish\\_hp.ht  
ml](http://www.ecy.wa.gov/programs/tcp/sites_brochure/lower_duwamish/lower_duwamish_hp.html)

Join our email list for  
regular updates!

[https://listserv.wa.gov/cgi-  
bin/wa?A0=DUWAMISH-  
RIVER-UPDATES](https://listserv.wa.gov/cgi-bin/wa?A0=DUWAMISH-RIVER-UPDATES)

## Cleaning up sites to reduce pollution of the Lower Duwamish Waterway

Ecology is leading the effort to clean up sources of contamination from the upland area surrounding the Lower Duwamish Waterway (LDW) Superfund Site. This is called ‘source control’.

We define source control as finding the sources of contamination and taking actions to stop or reduce them before they reach the LDW. It’s a crucial part of our commitment to control contamination sufficiently so that the Environmental Protection Agency (EPA) can start cleanup of the river sediments. Our long-term goal is to minimize recontamination of the river sediment and restore water quality in the river. A variety of actions, such as business inspections, controlling stormwater runoff, education, and cleanup up of contaminated sites, are all part of source control. Contaminants in soil and groundwater in upland areas around the LDW pose a risk to human health and the environment. They can find their way into the river through groundwater discharges, storm runoff, erosion, and other pathways.

### Upstream to downstream

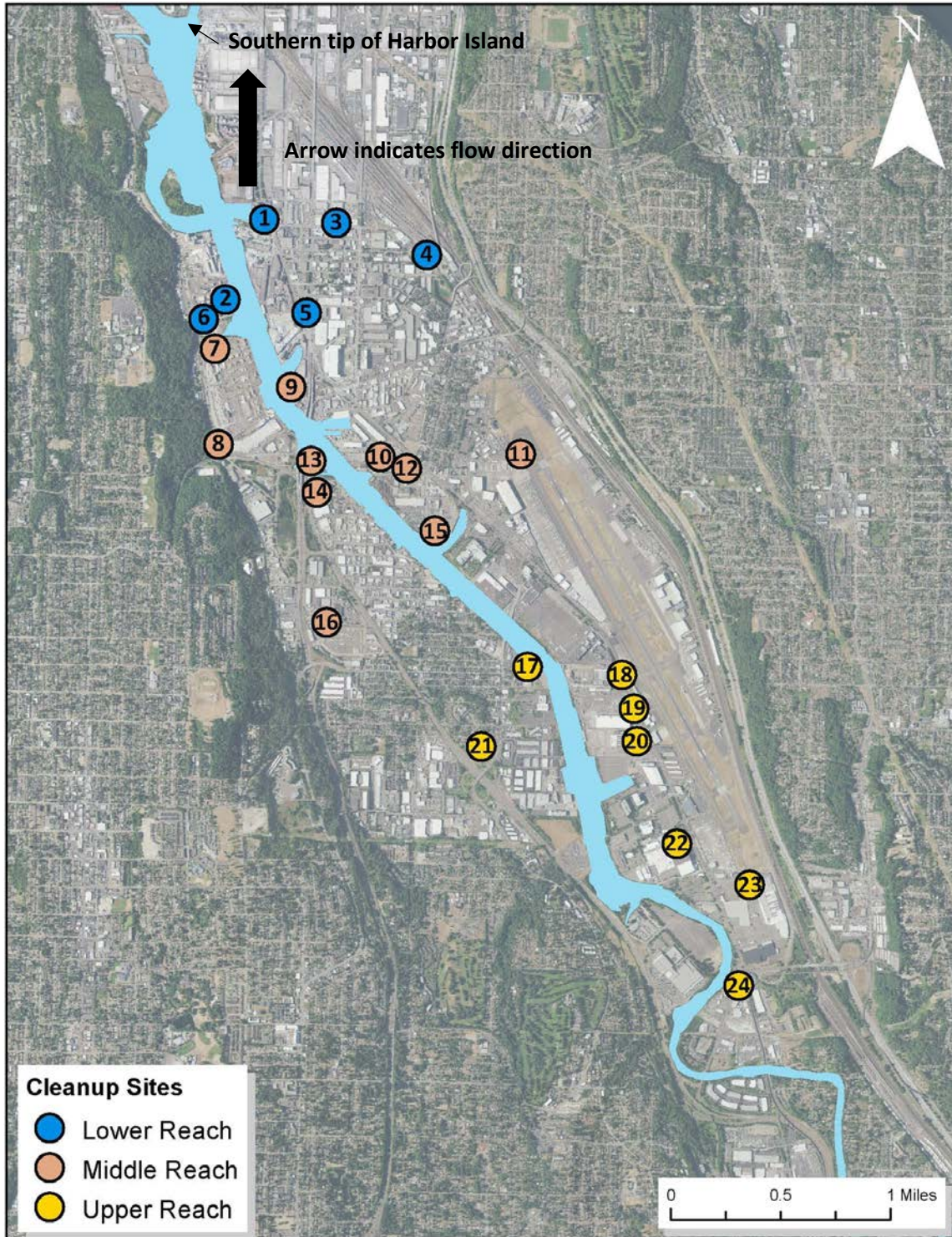
Ecology and EPA developed an “upstream to downstream” approach to source control and site cleanup. We divide the LDW into three sections called the Upper, Middle, and Lower Reaches. Since the river flows northward to Elliott Bay, the Upper Reach (upstream) starts in Tukwila and the Lower Reach (downstream) ends at the southern tip of Harbor Island. Cleaning up upstream sections first ensures that sediment moving downstream will be cleaner.

### Cleanup Oversight

We actively oversee the cleanup of 24 sites through a legal agreement cleanup process under the State Model Toxics Control Act (MTCA). Our Toxics Cleanup Program currently oversees 20 cleanup sites and our Hazardous Waste and Toxics Reduction Program oversees 4 sites. Other sites are cleaned up independently through the Ecology Voluntary Cleanup Program (VCP), or through federal programs overseen by EPA.

**Progress!**

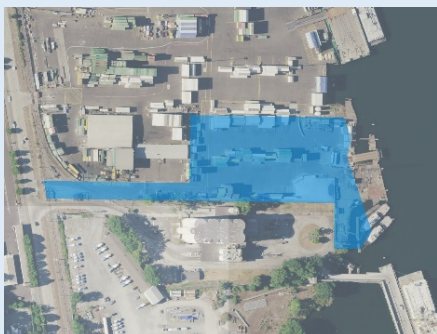
The 24 formal cleanup sites moving through the MTCA cleanup process are indicated on this figure and briefly summarized below with each site's status. The numbers on the map below correspond to specific sites. More site information is on pages 3 - 11.







5055 E Marginal Way, Seattle



### ① Snopac Property

**Agreed Order:** 2019.

**CSID:** 12463

**Status:** Remedial Investigation complete. Feasibility Study and Interim Action in progress.

**Previous uses:** Commercial warehousing, sandblast grit disposal, fish processing.

**Current uses:** Construction site.

**Contaminants of concern:** PCBs, PAHs, petroleum hydrocarbon constituents, tributyltin, metals.

### ② Duwamish Shipyard

**Agreed Order:** 2010.

**CSID:** 54

**Status:** Remedial Investigation complete. Feasibility Study in progress.

**Previous uses:** Repair and maintenance of floating vessels.

**Current uses:** Shipping container storage and truck access.

**Contaminants of concern:** PCBs, PAHs, SVOCs, tributyltin, dioxins, furans, oil, metals.

### ③ General Electric Aviation Div

**Consent Decree:** 2014.

**CSID:** 2446

**Status:** Implementing Cleanup Action Plan.

**Previous uses:** Servicing aircraft parts; warehouse.

**Current uses:** Office space.

**Contaminants of concern:** Chlorinated VOCs, metals, fuels, and oils.

### ④ Burlington Environmental LLC Georgetown

**Agreed Order:** 2010; amended 2015.

**CSID:** 2622

**Status:** Implementing Cleanup Action Plan. Several Interim Actions occurred beginning in 1991.

**Previous uses:** Hazardous waste treatment and storage facility.

**Current uses:** Facility closed (2003); receipt and short-time storage of small quantities of wastes.

**Contaminants of concern:** PCBs, VOCs, SVOCs, petroleum hydrocarbons.



*Between 4<sup>th</sup> Ave S and Duwamish Waterway*

### 5 West of 4th

**Agreed Order:** 2014; amended 2017.

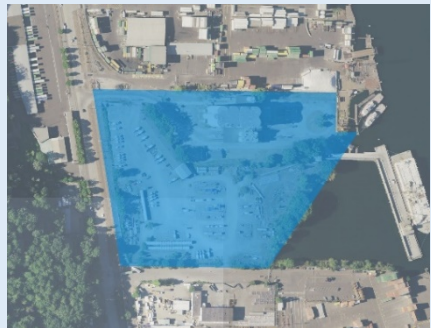
**CSID:** 12260

**Status:** **Supplemental** Supplemental Feasibility Study in progress. Pilot studies completed. Sediment porewater sampling completed. Several Interim Actions occurred beginning in 2007.

**Previous uses:** Hazardous waste treatment and storage facility and zinc die-casting.

**Current uses:** Facility closed in 2003; metal plating and fabrication of metal containers.

**Contaminants of concern:** Chlorinated VOCs, metals.



### 6 Glacier Northwest Inc

**Agreed Order:** 2009.

**CSID:** 599

**Status:** Remedial Investigation and Feasibility Study in progress.

**Previous uses:** Manufacturing activated charcoal, resins, glues.

**Current uses:** Cement storage and distribution.

**Contaminants of concern:** PCBs, PAHs, VOCs and SVOCs, petroleum hydrocarbons, dioxins, furans, metals.



### 7 Port of Seattle N Terminal 115

**Agreed Order:** 2011.

**CSID:** 1229

**Status:** Remedial Investigation in progress.

**Previous uses:** Tin reclamation.

**Current uses:** Lumber distribution; vehicle storage.

**Contaminants of concern:** PAHs, SVOCs, petroleum, metals.



*6020 W Marginal Way, Seattle*

### 8 Terminal 115 Plant 1

**Agreed Order:** 2020.

**CSID:** 11307

**Status:** Pre-Remedial Investigation work in progress.

**Previous uses:** Aircraft Manufacturing including plating, assembly, engine and fuel testing and metal working, concrete production, land filling former river channel.

**Current uses:** Retail fuel sales, cargo transfer, seafood processing, limited vehicle and cargo container maintenance.

**Contaminants of concern:** VOCs, SVOCs, petroleum, metals.



6365 1<sup>st</sup> Ave S, Seattle

### 9 Duwamish Marine Center

**Agreed Order:** 2011.

**CSID:** 4146

**Status:** Remedial Investigation complete. Feasibility Study in progress.

**Previous uses:** Repair and maintenance of floating vessels; junk dealer; construction services; barge shipping terminal.

**Current uses:** Tug and barge operations; metal fabrication.

**Contaminants of concern:** PCBs, PAHs, oil, metals.



### 10 Fox Ave Building

**Agreed Order:** 1991, 2009, and 2012.

**CSID:** 5082

**Status:** Remedial Investigation and Feasibility Study complete. Implementing Cleanup Action Plan. Interim Action occurred in 2009. Five Year Periodic Review in process.

**Previous uses:** Chain manufacturing; chemical and petroleum repackaging and distribution.

**Current uses:** Chemical distribution.

**Contaminants of concern:** CVOCs, Pentachlorophenol, oil, benzene.



### 11 North Boeing Field Georgetown Steam Plant

**Agreed Order:** 2008.

**CSID:** 4765

**Status:** Remedial Investigation in progress. Interim Action occurred in 2011.

**Previous uses:** Electrical power generation; aircraft manufacturing, maintenance, and research.

**Current uses:** Aircraft manufacturing, research, and delivery; jet fuel bulk storage.

**Contaminants of concern:** PCBs, PAHs, petroleum hydrocarbons, VOCs, SVOCs, jet fuel, phthalates, metals.





730 S Myrtle St, Seattle

### 12 Whitehead Tye

**Agreed Order:** 2016.

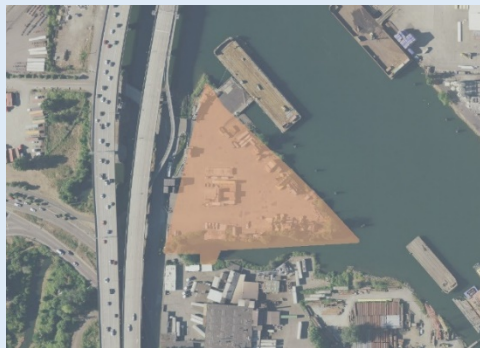
**CSID:** 12115

**Status:** Remedial Investigation Work Plan in progress. Interim Action occurred in 2018.

**Previous uses:** Lumber finishing, refuse burning, and wood treating.

**Current uses:** Metal recycling.

**Contaminants of concern:** PCBs, PAHs, VOCs, pentachlorophenol, petroleum, dioxins, furans, metals.



### 13 Douglas Management Dock

**Agreed Order:** 2011.

**CSID:** 6967

**Status:** Remedial Investigation complete. Feasibility Study in progress.

**Previous uses:** Sand and gravel batch plant; school bus parking and maintenance.

**Current uses:** Storage of equipment and shipping containers.

**Contaminants of concern:** PCBs, oil, metals.



### 14 Industrial Container Services WA LLC

**Agreed Order:** 2010.

**CSID:** 62

**Status:** Remedial Investigation complete. Feasibility Study in progress.

**Previous uses:** Cleaning and recycling of used storage drums, some used for hazardous wastes.

**Current uses:** Cleaning and recycling of used storage drums.

**Contaminants of concern:** PCBs, PAHs, VOCs, pesticides, oil, metals.



7400 8<sup>th</sup> Ave S, Seattle

**15 Crowley Marine Services 8<sup>th</sup> Ave S**

**Agreed Order:** 2009.

**CSID:** 2520

**Status:** Remedial Investigation complete. Feasibility Study in progress.

**Previous uses:** Manufacturing of pipe, chain, hydraulic equipment, and concrete; machinery and scrap iron storage; sawmill, lumber distribution, creosote wood treatment.

**Current uses:** Transloading and loading of contaminated soils and dredge sediments from trucks and barges onto rail cars.

**Contaminants of concern:** PAHs, metals.



**16 South Park Landfill**

**Agreed Order:** 2009. **Consent Decree:** 2019. **CSID:** 1324

**Status:** Remedial Investigation and Feasibility Study complete. Implementing Cleanup Action Plan. Interim Actions occurred in 2016 and planning in progress for more cleanup actions.

**Previous uses:** Landfill; truck and equipment storage, auto wrecking yard.

**Current uses:** Solid waste transfer station, commercial businesses and school bus parking.

**Contaminants of concern:** Chlorinated VOCs, VOCs, landfill gas, petroleum hydrocarbons, oil, metals.



**17 South Park Marina**

**Agreed Order:** 2019.

**CSID:** 2858

**Status:** Remedial Investigation Work Plan completed. Field investigations in progress.

**Previous uses:** Marina (including boat repair, maintenance, storage); drum cleaning / reconditioning operations, radiator repair, gas station.

**Current uses:** Marina with boat storage and repair, marine supplies retail sales; automobile tire sales and installation.

**Contaminants of concern:** PCBs, PAHs, VOCs, dioxins, furans, phthalates, pesticides, oil, metals.



8531 E Marginal Way S, Seattle

**18 Jorgensen Forge Corp**

**Agreed Order:** 2007 and 2017.

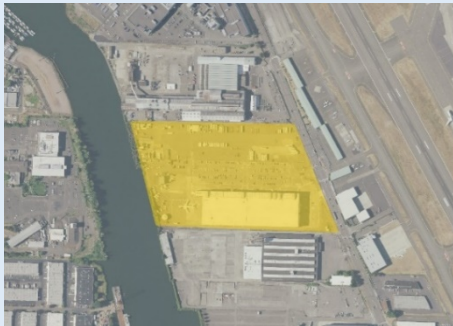
**CSID:** 3689

**Status:** Remedial Investigation in progress. Interim Action occurred in 2014.

**Previous uses:** Fabrication of structural steel, tractor and road equipment; manufacturing of Navy vessels; steel distribution.

**Current uses:** Facility being demolished for future reuse.

**Contaminants of concern:** PCBs, VOCs, petroleum, metals.



**19 Boeing Isaacson Thompson**

**Agreed Order:** 2010.

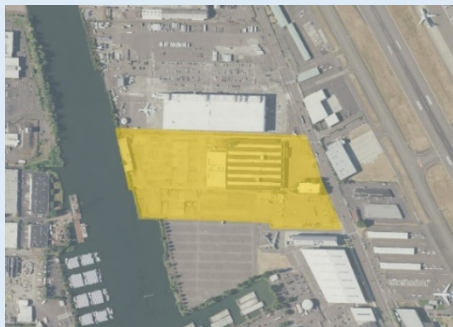
**CSID:** 1944

**Status:** Remedial Investigation complete. Feasibility Study in progress.

**Previous uses:** Aircraft manufacturing.

**Current uses:** Aircraft manufacturing.

**Contaminants of concern:** PCBs, PAHs, VOCs, SVOCs, petroleum hydrocarbons, metals.



**20 8801 E Marginal Way S**

**Agreed Order:** 2006 (sediment) 2008 (upland).

**CSID:** 5056

**Status:** Remedial Investigation complete. Feasibility Study and Interim Action Work Plan finalized. Interim action is proposed to begin in 2021.

**Previous uses:** Truck manufacturing.

**Current uses:** None (under development).

**Contaminants of concern:** PCBs, PAHs, VOCs, SVOCs, petroleum hydrocarbons, metals.



**21 Precision Engineering Inc.**

**Agreed Order:** 2020.

**CSID:** 4532

**Status:** Remedial Investigation Work Plan in progress.

**Previous uses:** Manufacturing of large marine items, including propellers and blade assemblies. Services performed included grinding, polishing, chrome plating, milling, welding and coating.

**Current uses:** Warehouse for heavy duty hardware, machine tools, construction supplies and surplus equipment.

**Contaminants of concern:** Trichloroethene (TCE), chromium, petroleum.





9725 E Marginal Way, Seattle

**22 Boeing Developmental Center**

**Agreed Order:** 2019. **CSID:** 5059

**Status:** Remedial Investigation in progress. Interim Action occurred in 2019.

**Previous uses:** Various commercial, industrial and agricultural uses.

**Current uses:** Primarily research and development for aircraft, such as structural testing of hydraulic systems, coating development, 3D printing.

**Contaminants of concern:** VOCs, TPHs, metals, PCBs, and PAHs.



**23 Emerald Gateway**

**Agreed Order:** 2020. **CSID:** 6584

**Status:** Interim Action in progress.

**Previous uses:** Commercial warehousing, truck maintenance and repair operations, truck refueling activities, automobile wrecking and parts salvaging, gasoline service station.

**Current uses:** Commercial warehousing.

**Contaminants of concern:** PCBs, PAHs, petroleum hydrocarbon constituents, metals.



**24 Boeing Field Chevron**

**Agreed Order:** 2015. **CSID:** 7030

**Status:** Remedial Investigation complete. Feasibility Study in development.

**Previous uses:** Service station with underground storage of gasoline.

**Current uses:** Service station with underground storage of gasoline.

**Contaminants of concern:** Benzene, gasoline, diesel.

**Acronyms:**

**CVOCs:** chlorinated volatile organic compounds

**PAHs:** polycyclic aromatic hydrocarbons

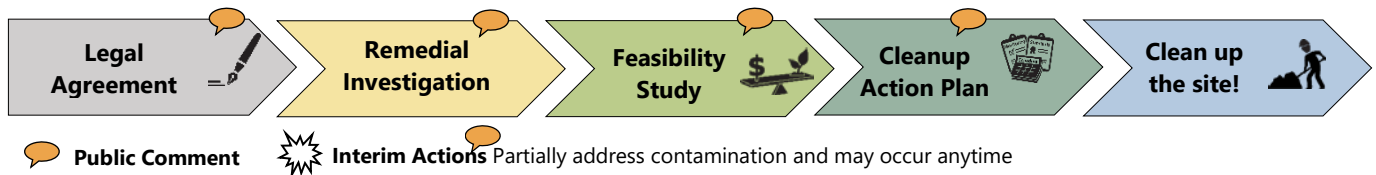
**PCBs:** polychlorinated biphenyls

**SVOC:** semi volatile organic compound

**TPH:** total petroleum hydrocarbon

**VOC:** volatile organic compound

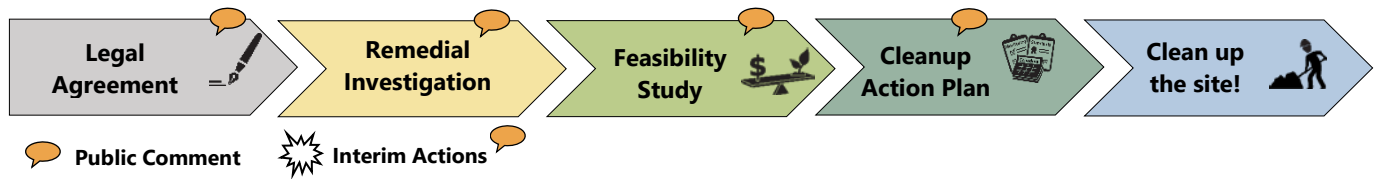
### Lower Duwamish Waterway Formal Sites Status



	Current Status	Site Name
1	Feasibility Study and Interim Action ongoing 2019 → → → 2020	Snopac Property
2	Feasibility Study in progress 2010 → → →	Duwamish Shipyard
3	Implementing Cleanup Action Plan 2014 → → → → 2007	General Electric Aviation Div
4	Implementing Cleanup Action Plan 2010 → → → → → 1991	Burlington Environmental LLC Georgetown
5	Feasibility Study in progress 2014 → → → 2007	West of 4 <sup>th</sup>
6	Remedial Investigation and Feasibility Study in progress 2009 → → →	Glacier Northwest Inc
7	Remedial Investigation in progress 2011 → →	Port of Seattle N Terminal 115
8	Pre-Remedial Investigation work in progress 2020 →	Terminal 115 Plant 1
9	Feasibility Study in progress 2011 → → →	Duwamish Marine Center
10	Implementing Cleanup Action Plan 1991, 2009 & 2012 → → → → → 2009	Fox Ave Building
11	Remedial Investigation in progress 2008 → → → 2011	North Boeing Field Georgetown Steam Plant
12	Remedial Investigation Work Plan in progress 2016 → → → 2018	Whitehead Tye



### Lower Duwamish Waterway Formal Sites Status



	Current Status	Site Name
13	Feasibility Study in progress 2011	Douglas Management Dock
14	Feasibility Study in progress 2010	Industrial Container Services WA LLC
15	Feasibility Study in progress 2009	Crowley Marine Services 8 <sup>th</sup> Ave S
16	Implementing Cleanup Action Plan 2009, 2019      2016 & 2020	South Park Landfill
17	Remedial Investigation in progress 2019	South Park Marina
18	Remedial investigation in progress 2007 & 2017      2014	Jorgensen Forge Corp
19	Feasibility Study in progress 2010	Boeing Isaacson Thompson
20	Feasibility Study and Interim Action Work Plan finalized 2006 & 2008      2021	8801 E Marginal Way
21	Remedial Investigation Work Plan in progress 2020	Precision Engineering Inc.
22	Remedial Investigation in progress 2019      2019	Boeing Developmental Center
23	Interim Action in progress 2020      2021	Emerald Gateway
24	Feasibility Study in development 2015	Boeing Field Chevron



Toxics Cleanup Program  
3190 160<sup>th</sup> Ave SE  
Bellevue, WA 98008-5452

## Lower Duwamish Cleanup Sites Update



### **Información sobre la limpieza ambiental del Lower Duwamish Waterway:**

Si le gustaría obtener este documento en español, favor de comunicarse al 360-407-6097 o [preguntas@ecy.wa.gov](mailto:preguntas@ecy.wa.gov).

### **Thông tin về công tác làm sạch môi trường Duwamish:**

Nếu quý vị muốn nhận tài liệu này bằng tiếng Việt hoặc cần thêm thông tin, xin liên hệ ông Liêm Nguyễn: 360-407-6955, điện thư: [Lngu461@ecy.wa.gov](mailto:Lngu461@ecy.wa.gov).

有關 Duwamish 河清理信息:

如需此文件的中文版, 請聯繫 Sunny Becker, 聯繫方式 425-649-7187 : [sunny.becker@ecy.wa.gov](mailto:sunny.becker@ecy.wa.gov).

**Want to get more involved with efforts to clean up the Duwamish River?**

Contact the Duwamish River Cleanup Coalition/Technical Advisory Group at [contact@duwamishcleanup.org](mailto:contact@duwamishcleanup.org), (206) 954-0218, or visit <http://duwamishcleanup.org/>