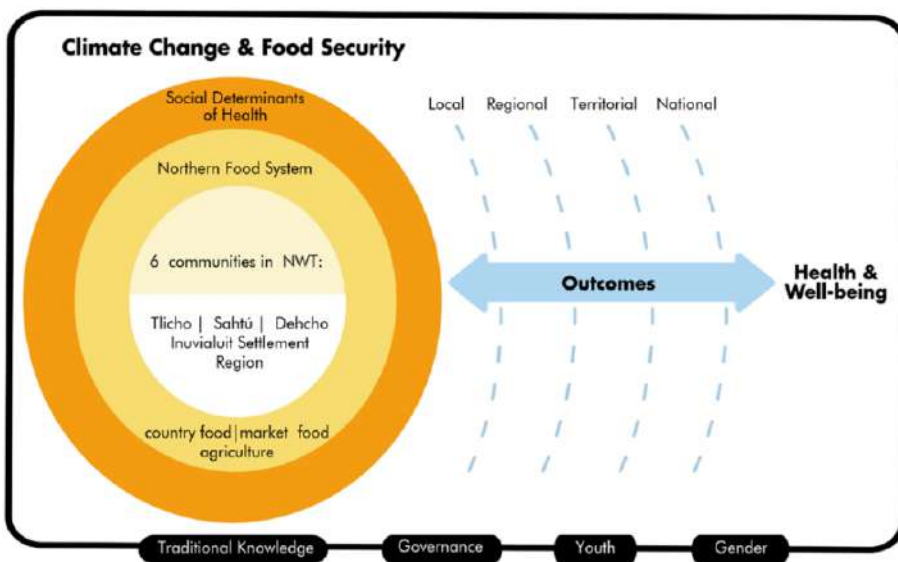


Learning from and enhancing Community Capacity for Climate Change and Food Security (C4FS) action in the NWT

This project works closely with six NWT communities and regional and territorial partners. It will **identify, develop and apply community action, created by and with community members, to strengthen community capacity to plan for and deal with food security issues in the face of climate change.** The four focus areas for this research include:



- 1. Traditional Knowledge (TK):** How can TK strengthen & adapt food systems to climate change?
- 2. Governance:** How can a community govern its own food systems?
- 3. Youth:** How can youth be empowered with knowledge and skills to strengthen food systems and be future community leaders?
- 4. Gender:** How do climate and food challenges impact each gender in communities?

Research Timeline

Team Feature

This project is co-lead by a team of community, academic, and government partners. The three co-Principal Investigators are: Kelly Skinner, Andrew Spring, and Sonia Wesche.

Other project leads: Gina Bayha, Warren Dodd, Myriam Fillion, Jennifer Fresque-Baxter, Tiff-Annie Kenny, Alex Latta, Brian Laird, Jullian MacLean, Sonja Ostertag, Mylene Ratelle, Melaine Simba, Allan Torng, and John B. Zoe.



Inuvialuit Settlement Region



COMMUNITY-LED RESEARCH QUESTIONS

Tuktoyaktuk

- How does the Inuvik-Tuktoyaktuk highway and changing NNC subsidy status affect market food costs in the community?
- How does the highway affect availability of and access to market foods and/or country foods?

Paulatuk

- How can the community freezer become a sustainable resource to improve food security?
- How can the NNC Cooking Circles contribute to food security in the community?

RESEARCH UPDATES

Sonia Wesche is leading project activities in this region with Tiff-Annie Kenny, Sonja Ostertag and Jullian Maclean. They have met with Tuktoyaktuk Community Corporation (TCC), and hope to meet soon with Paulatuk Community Corporation (PCC) to plan research activities in each community. The C4FS project overlaps with the Country Foods for Good Health project taking place in both communities. In Tuktoyaktuk, graduate student Kim Mathieu (supervised by Sonia and Tiff-Annie) is conducting a market food cost analysis. In collaboration with Mataya Gillis, who runs the Inuvialuit youth magazine *Nipaturuq*, interviews will be conducted with youth and Elders about their perspectives on the impacts of the Inuvik-Tuk highway on food availability and access. The interviews will contribute to a *Nipaturuq* magazine issue on Food Security, as well as the research project. Graduate student Julia Gyapay (supervised by Kelly Skinner) is collaborating with the local school to conduct a recipe book project to document and share community-adapted country food recipes. Julia is also speaking with Elders, harvesters, local health professionals and community members to see how culturally relevant messaging about healthy and safe food choices in the ISR can be co-developed with various message disseminators. Activities in Paulatuk may include an evaluation of the local cooking circles (funded by Nutrition North Canada) and/or the community freezer, and their contribution to country food access and food security; however, details will be determined in discussion with PCC.

Dehcho Region



COMMUNITY-LED RESEARCH QUESTIONS

Kakisa

- How can community capacity for agriculture be increased for different groups of people in the community (e.g. youth, Elders)?
- How might Kakisa serve as a food hub for other neighbouring communities?

RESEARCH UPDATES

Research Assistant Erin Snider (supervised by Andrew Spring), worked with four local youth during summer 2020. Northern Agriculture Funding is supporting the community work around an agro-ecological project that will be developed in the future. Graduate student Jennifer Temmer (supervised by Andrew), is initiating a feasibility study of a Ka'a'gee Tu food hub, and reimagining a community store that could facilitate the movement of food in and out of the area.

Sahtú Region



COMMUNITY-LED RESEARCH QUESTIONS

Deline

- How can a food processing trailer and community garden build community capacity to improve food security?

RESEARCH UPDATES

Andrew Spring has been working with the Délı̨nę Got'ı̨nę Government to create a place for knowledge and food sharing in Deline. The Climate Change and Health Adaptation Program (CCHAP) is funding work with local youth to create youth-led programming about climate change adaptation, food security, and language and culture. Graduate student Neala McFarlane (supervised by Andrew) is supporting youth-led discussion in the community around needed and desired programming through the youth council. Graduate student Connor Judge (supervised by Kelly Skinner) is evaluating the country food processing trailer and conducting a policy review of rules and regulations affecting country food use in the area.

Tłjcho Region



COMMUNITY-LED RESEARCH QUESTIONS

Both communities

- How can the communities build on Traditional Knowledge of country food sources as a component of food security?

Wekweeti

- How can food security research contribute to the development of a community knowledge centre?

Whati

- What impact will the new road have on food security comparing the community's former non-NNC status (prior to 2016), current eligibility status, and loss of NNC status after the road is built?

RESEARCH UPDATES

Andrew Spring and Alex Latta are working closely with John B. Zoe to plan a strategy for the project in the region and hire a community-based research coordinator. Work will begin by engaging Elders to map traditional placenames linked to country food sources. Michael Birlea, Manager of Lands Protection and Renewable Resources for the Tłjcho Government, will be central to the research. He started his graduate studies at Wilfrid Laurier University in September (supervised by Alex).