



Nambour women claim three in a row in premiership thriller

- STORY PAGE 6

Nambour Senior Women's rugby team celebrates the 2024 Sunshine Coast Rugby Union premiership win with Coach Luke Zeremes. Pic Patrick Gillett

New investments mark turning point, signal green shoots:

Nambour on the rise

by Cameron Outridge

NAMBOUR is witnessing promising signs of growth, according to Mark Bray, President of the Nambour Chamber of Commerce. The town's affordability and ongoing revitalisation initiatives were attracting new businesses and residents, contributing to its trajectory.

Mr Bray said a notable advancement was the planned establishment of Queensland Hydro's headquarters at 144 Currie Street (next door to the Fred Murray building), which follows the recent sale of the building for \$4.5 million.

This move is expected to open up new job

opportunities and spur further economic activity in the area.

The office will serve as the headquarters for the Lake Borumba mega hydro project, expected to create local employment opportunities and further investment in the region. Their five-year lease is anticipated to be just the beginning of their tenure in the town.

Mr Bray welcomed the influx of investment and praised the collective efforts of the business community, political advocates, and residents. "The significant investment we're seeing in Nambour is a testament to the hard work behind the scenes to attract investment

and restore town pride.

"We are excited for Nambour's future and looking forward to continuing to help effect more change," he said.

Interest in Nambour's commercial real estate market is surging, with 144 Currie Street generating interest from 30 potential buyers before its sale.

Nambour Central sells for \$9.2 million

In addition, the Nambour Central shopping centre recently sold for \$9.2 million, with plans to develop a medical hub, further boosting local employment. Boasting a

6728sqm site, Nambour Central (not to be confused with Nambour Plaza) has been recently refurbished and is anchored by national tenants Pets Domain, Sunshine Coast Radiology, ANZ and Commonwealth Bank.

The previous Westpac Bank location also sold recently, offering another prime spot for future business operations. Investors are also eyeing 32-36 Lowe Street, home to the National Australia Bank, which will continue to occupy the ground floor for at least another year.

Managing Director at Colliers Sunshine

- CONTINUED PAGE 3

CALOUNDRA SCRAP METAL

All cars, trucks, machinery

Removed CASH for some Scrap metal bins supplied

Caloundra Scrap Metal 1300 132 013

SUNSHINE STEERING
Straight up front.

RTA No. AU49451

David & Tina Ledger P 5478 8020 F 5478 8850

Power Steering • Suspension • Wheel Alignments
Child Restraints • Roadworthy Inspections
Tyre & Balancing • All Mechanical Service & Repairs
Air Conditioning • All Brake Repairs
We also sell nuts, bolts and tyres.

4/27 Main St, Palmwoods, Qld 4555

Sunstate Gearbox & Diff Service

Specialising in:

- Manuals • Differentials
- Automatics • Tailshafts
- Transferscases • Clutches

OBLIGATION FREE APPRAISAL

5 Charles Court, Kunda Park
Ph: (07) 5476 8911
www.sunstategearbox.com.au

CENTURY 21. Living Local

PAY \$0 UPFRONT MARKETING

Sell Now - Pay Later!

Contact our office for more information. Conditions apply

Woombye | 07 5442 1888
Nambour | 07 5441 3366

Collectorama \$8 ea CASH

Giant Vintage and Antiques Fair KIDS & PARKING FREE

September 7, 2024 | 7am - 2pm

NAMBOUR SHOWGROUNDS Coronation Avenue

THE HINTERLANDS HIGHEST RATED AGENTS

#1 AS RANKED BY GOOGLE

OPEN 7 DAYS

5441 2511 Cnr Howard & Queen Sts, Nambour

CHECK OUT OUR GOOGLE REVIEWS

Sunshine Valley Gazette

Editorial

If it matters to you, it matters to us. Send your news to Cameron Outridge 0409 424 487 editor@svgazette.com.au

Advertising

To advertise contact Tanya Outridge 0400 069 711 or email Tanya at tanya@sunshinevalleygazette.com.au

Designer

Katie Buckley: katiebuckley@live.com

Distribution

10,000 copies are distributed to popular pick-up points throughout the hinterland including at Palmwoods, Woombye, Nambour, Chevallum, Eudlo, Mooloolah, Hunchy, Yandina, Maleny, Montville, Flaxton, Mapleton and Forest Glen.

Print, Email, Online & on Facebook

The Gazette is Printed Fortnightly & Online Always. A pdf form of the printed paper can be found on our website. Stories are also posted on Facebook, on our blog and via email to our subscribers.

Editorial Policy

Every endeavour is made to publish submissions but we can never guarantee that any article will definitely appear. We prioritise constructive news which strengthens the community fabric. Our broad aims are to:

- Promote local events and clubs.
- See and report what's good in the hinterland.
- Back local small businesses.

Thanks to our Advertisers

The Gazette is completely funded by our advertisers who make community journalism possible. Please support them and let them know you found them in the Gazette.

Nambour legal eagle earns top lawyer accolade

by Tanya Outridge

AFTER just four years practising law, Bradley and Bray's Associate Director, Bridie Edwards, has been recognised as one of Australasian Lawyer's Most Influential Lawyers for 2024.

The Australasian Lawyer's prestigious list honours legal professionals who have made significant contributions to the industry.

The 2024 list celebrates 47 influential lawyers who have delivered positive outcomes in support of their peers and the industry.

Bridie was named alongside just 17 lawyers from all around Australia in the 'Young Influencers' category.

Detailing what it means to be deemed influential, Megan Gallagher, Senior Consultant for legal, risk and compliance at recruitment firm Robert Walters, says, "It's no secret that the work of a lawyer is demanding and relentless.

When I think about what makes someone an influential lawyer in 2024, the first qualities that come to mind are drive, a strong work ethic and a proactive attitude."

"I was absolutely shocked but very excited by this recognition," Ms Edwards said.

"But at our firm, we are constantly looking for ways to make the practice of Law a more innovative, and in turn, accessible and efficient space.

"We have an incredible team here, and it is because of their dedication and support that my extra curricular activities are possible."



Nambour lawyer Bridie Edwards: "I was absolutely shocked but very excited by this recognition."

Ms Edwards explained "We utilise technology to streamline processes and this drives efficiency for not just our clients, but our staff as well."

A true leader and innovator, Ms Edwards was elected as the youngest member of the Queensland Law Society Council for two consecutive terms and has also contributed to the InfoTrack Legal Tech Advisory Group for two years, being a part of its inaugural group just last year.

Despite aspiring to a career as a TV journalist, Ms Edwards showed an early aptitude for Law.

"I really wanted to do Lisa Wilkinson's job,"

she laughed. "But my Legal Studies teacher at school suggested that I might be better suited to Law, and so here we are."

Ms Edwards completed her studies at the University of the Sunshine Coast, and after finishing her degree, applied to work at Nambour's Bradley and Bray Lawyers.

"What we strive to maintain here is a very close and supportive environment for our entire team," she said.

"We have clients who have been with this firm for decades and I think the fact that we are warm, make the law accessible for our clients, but also embrace and use technology to make it as smooth as possible, really helps."

WHITE'S IGA WHITE HOT MEAT SALE

WEDNESDAY 21ST AUGUST - TUESDAY 27TH AUGUST

HOT

BETTER THAN 1/2 PRICE



\$20 kg
SAVE \$39.99

AUSTRALIAN WHOLE ECONOMY BEEF TENDERLOIN



\$22 kg
SAVE \$10

AUSTRALIAN GRAIN FED RUMP STEAK



\$20 kg
SAVE \$9

AUSTRALIAN LAMB RUMP STEAK

WE SLICE Fresh!

MEET THE BUTCHERS

1/2 PRICE



\$4.50 ea
SAVE \$4.50

KB BLUEWAVE SALT & PEPPER SQUID 270G
\$16.67 per kg

HOT



\$34 kg
HOT PRICE

AUSTRALIAN GRAIN FED SCOTCH FILLET STEAK

HOT



\$13 kg
HOT PRICE

AUSTRALIAN BONELESS PORK LOIN ROAST

FAVOURITE ROO RECIPES

QUICK & EASY TO COOK



\$10 ea
SAVE \$4

MACRO MEATS KANGAROO MINCE 1KG \$10 per kg

HIGH IN PROTEIN & IRON ... AND LEAN!

Nambour gets festive:

Businesses prep for Big Pineapple music event

THE Big Pineapple Music Festival is set to return on October 19th, promising an unforgettable day of music, food, and fun.

With a massive lineup featuring some of Australia's top artists, including The Amity Affliction, Bliss n Eso, The Dreggs and Tones and I, the festival is a must-attend event for music lovers across the region.

In the lead-up to the festival, Nambour businesses are gearing up for a busy season. Rhonda Billett from IamNambour.com.au highlighted the excitement, particularly for local shops and salons.

"The Big Pineapple Music Festival is back, and it's fantastic to see so many festival-goers ready to celebrate live music in our region," Rhonda said.

"We've noticed that, based on previous years, Nambour's op shops get busy with people searching for unique outfits. It's the perfect time to check out our Op Shop Hop map on www.IamNambour.com.au."

Local hair salons, like Uptown Hair Studio, are also seeing a surge in bookings. "We're getting booked up for festival hair braids, curls, and colours. It's amazing to see the flow-on effect for our local businesses," Rhonda added.

Uptown Hair Studio, in collaboration with KMS Au, is also offering an exciting opportunity for festival-goers.

In September, the salon will be giving away a \$500 prize package, including a hair styling session for two on the morning of the festival, along with a selection of hair goodies. Details on how to enter will be available soon via their social media channels.

Festival attendees can also look forward to unique attractions like the stunning Lantern Parade, the new World Eats and Beats area offering exotic foods and global tunes, and the thrill of watching some of Australia's hottest skaters at the Skate Jam. Plus, don't miss out on dressing to impress for the Best Dressed at



Isabella, Amity and Erin strike a pose in front of the iconic Big Pineapple, ready for the festival fun. Picture: Kenna Morgan

The Fest competition or trying your hand at the inaugural Great Australian Pineapple Toss. The day will wrap up with a massive Piney Sing-Along, filled with surprises, making this

year's Big Pineapple Festival a celebration of fun, flavour, and togetherness.

• Tickets for the Festival are available at www.bigpineapplefestival.com.



Nambour Central has sold for \$9.2 million.

Nambour's 'upward trajectory' after challenging times

- FROM PAGE 1

Coast Nick Dowling highlighted the growing confidence in Nambour's potential, reflecting the town's upward trajectory after facing challenging market conditions in recent years.

"Over the last two decades, the population of the Sunshine Coast has experienced a significant increase, growing by 65 percent to be over 413,000 residents in 2022. The trend towards remote work and lifestyle preferences, coupled with housing affordability, has spurred significant migration to regional areas, positioning the Sunshine Coast as a key beneficiary.

"Nambour is currently experiencing robust growth, with its demographics evolving over the past decade into a sought-after destination for young families seeking affordable housing on the Sunshine Coast, thereby bolstering retail demand."

Member for Nicklin Rob Skelton said hundreds of workers from Queensland Hydro were all set to move into 144 Currie Street.

"With Queensland Hydro having secured a 5-year lease on the building, this means more jobs for Nambour, boosting our local economy," he said. "I'm proud to have advocated for this outcome for the last two years on behalf of the community, and I'm thankful the Miles Labor government is delivering for Nambour and the Sunshine Coast."

• For more information on how your business can support the Nambour Chamber of Commerce, visit www.nambour.wavecrm.com.au.



Luxe High Tea

Saturday | 10:00am | \$99pp - Minimum of 2 guests

GF available

Glass of Bollinger Special Cuvée

PLATE OF

- Moreton bay bug & brie brioche
- FG smoked pulled brisket in a baby Yorkshire pudding
- Freshly baked gourmet sausage roll
- Fresh bruschetta of the day

PLUS A STACKER OF

- Petite Flaxton specialty raspberry soufflé
- Macaron
- Vanilla bean infused butterfly cake
- Cheesecake pop

Unable to be made vegetarian or vegan (most other dietaries can be catered for)
This is an example may change due to availability



Tapas High Tea with a twist

Saturday | 10:00am | \$55pp | GF available

- Poached organic chicken & avocado brioche
- Freshly baked gourmet sausage roll
- Fresh bruschetta of the day
- Tempura zucchini fingers

PLUS A STACKER OF

- Rich chocolate truffle
- Macaron
- Vanilla bean infused butterfly cake
- Cheesecake pop

This is an example may change due to availability

Pre-order and pre-pay is essential for your High Tea event so we are ready for you on arrival

Breakfast

Wednesday - Sunday
8:00am - 11:00am

Lunch

Wednesday - Sunday
11:00am - 2:00pm

Bollinger Luxury High Tea

Saturday
10:00am
Pre Order - Pre Pay

CALL NOW TO BOOK
07 5445 7450

313 Flaxton Drive, FLAXTON
flaxtongardens.com.au



Call for an on-site measure & quote

Personalise Your Home with Local, Custom-Made Curtains

- Our skilled installer will fully install your new curtains.
- Expert advice on the best solutions for your project.
- Combine your curtains with new blinds or shutters.
- Choose from our showroom range of beautiful fabrics.
- Do just one room or your whole home.
- Many looks & styles to suit your home.



CUSTOM Curtains and Shade

Shop 5/46-50 Hospital Road, Nambour
www.customcurtains.com.au

5441 6000

Blinds • Awnings • Curtains • Shutters • Security • Wallpaper

ROB SKELTON & LABOR HAVE A PLAN FOR OVER 4500 NEW JOBS ON THE SUNSHINE COAST.

- ✓ Lake Borumba Pumped Hydro
- ✓ Sunshine Coast Direct Rail
- ✓ Beerburrum to Nambour Rail Duplication
- ✓ Multi-Purpose Hall for Yandina State School

Rob SKELTON_{MP}
LABOR for NICKLIN
Getting Things Done!



DOING WHAT MATTERS FOR THE SUNSHINE COAST

Authorised Kate Flanders
 Level 1, 16 Peel St South Brisbane QLD

Therapist turns stress into healing using hypnotic techniques

Business Writeup by Tanya Outridge

LIKE many people, Behaviour and Mental Health Practitioner, Marisa Netherwood, ultimately found her calling through adversity, and now she uses her skills and experience to help others who are struggling in various areas of their lives.

“My husband passed away in 2018 and I was forced to process the subsequent grief,” Marisa explained. “It was fortunate that I had already begun a regular practice of meditation, and it helped me through an enormously complex and difficult time.

“My work background had been quite varied and although it was painful, I think this situation was largely responsible for me tuning in to my intuition and exploring ways I could help others to face their own challenges and adversity.”

After studying Clinical Hypnotherapy and Neuro Linguistic Programming, Marisa opened her clinic, *Your Mind Redesigned*, in Nambour in 2022. “I love what people can achieve by going through the experience of hypnotherapy,” Marisa said.

Therapeutic techniques such as Hypnotic Visualisation, EFT/ Tapping and Hypnotic Anchoring are increasingly recognised in scientific literature as effective in managing a broad range of issues, including stress, anxiety, depression, fears, phobias, weight management, motivation, unhealthy habits and addictions, self sabotage, limiting beliefs, trauma, negative thinking, emotional dysregulation, pain, low self esteem, emotional eating and sexual dysfunction.



Marisa Netherwood: “I love what people can achieve by going through the experience of hypnotherapy.”

“What I do can best be described as directed meditation with a clinical purpose. I listen carefully to my clients, take their own words and give them back to their subconscious mind.

“This is quite intense therapy, but the hypnotic state is extremely peaceful and I like to think of it as a ‘reward’ for going through the hard work of therapy,” she said.

On the 24th of this month, Marisa is co-hosting a stress management workshop and one day retreat at the Mooloolaba Wellness Collective.

“This retreat is specifically designed for women who are experiencing chronic stress and burnout,” Marisa explained.

“Our mission is to help you change your relationship with stress through a carefully curated collaboration of movement, techniques, and evidence based real-world tools that have been selected because of their proven effectiveness when completing the stress cycle.”

To secure your place, contact Marisa on hello@yourmindredesigned.com and to find out more about Your Mind Redesigned, visit www.yourmindredesigned.com

GOODYEAR
 AUTOCARE *Good to go*

ALLCOAST
 TYRE SOLUTIONS

WWW.ALLCOASTTYRES.COM.AU



OUR SERVICES

- TYRE FITTING
- TYRE REPAIRS
- TYRE ROTATIONS
- WHEEL UPGRADES
- WHEEL ALIGNMENTS
- BATTERIES & WIPERS

(ALL TYRE BRANDS AVAILABLE)

22 Coronation Ave,
 Nambour

(Opposite the Nambour RSL)

Ph: 07 5441 2133





Bloody Good Tour visits Nambour, encouraging locals to save lives

SIMMO Braun, pictured above in Nambour last week, is a Central Coast father on an extraordinary journey to visit every blood donor centre in Australia as part of "The Bloody Good Tour." His mission? To save thousands of lives and inspire Australians to donate blood or plasma, particularly those who have never done so before.

Simmo and his children are traveling around the country in a caravan, donating plasma every fortnight. Simmo hopes to show how donating blood not only saves lives but also improves the donor's mental well-being. Lifeblood research reveals that 4 in 5 donors feel a positive impact on their mental health, and 1 in 4 feel energised after donating.

"While I haven't personally needed blood, last year I faced some personal challenges, and regular blood donation helped me manage my mental health," Simmo said. "It lifted my spirits and made me feel connected to something bigger. I want people to know that doing good feels good—donating blood is a great way to help others and improve your own well-being."

Lifeblood spokesperson Rebecca Ind supported Simmo's message, sharing that donors overwhelmingly report feeling better after donating blood. She also noted that blood demand is at a 10-year high, with plasma demand higher than ever.

To support the tour and register to donate, visit www.lifeblood.com.au or call 13 14 95.

Remembering Hermann Schwabe

Hinterland mourns the loss of visionary leader

Vale Hermann Schwabe
June 19, 1941 – August 7, 2024

THE Sunshine Coast has lost a good man in former Maroochy Shire Council Division One Councillor, Hermann Schwabe.

Hermann Schwabe was a Councillor in the then Maroochy Shire Council, for over two decades. In that time, he was Councillor for Division 1, and spent one term as deputy mayor. When he first ran for Council, he had recently immigrated and had a thick German accent. He won his first election by only 6 votes. From then on, until his retirement, Hermann was each time re-elected with a comfortable majority, even being elected unopposed for one term. From that first term, the majority of residents in his division recognised his determination and vision, and their support is testimony to his character, vision and integrity.

Hermann saw things that he believed could be done better, and he fought for those things. He fought for the environment, he fought for the "little guy". If he thought there was a better way, he would push for it, regardless of how uphill a battle it might be. He was not afraid of standing alone for what he believed in.

Hermann was dogged in standing up for environmental protection, even at a time where the the catchcry of the day was "progress, growth and development". He pushed for developers to bear the costs of infrastructure and was instrumental in creating the "user pays" principle, ensuring that developers, not rate-payers were responsible for those costs. He negotiated with developers to set aside land protected from development for the enjoyment of residents and the protection of natural habitats. He pushed for reducing the heights and locations of high rise buildings, helping to protect some of the beautiful green areas on the coast. He fought to protect the Maroochy River floodplain from over-development, and was passionate about

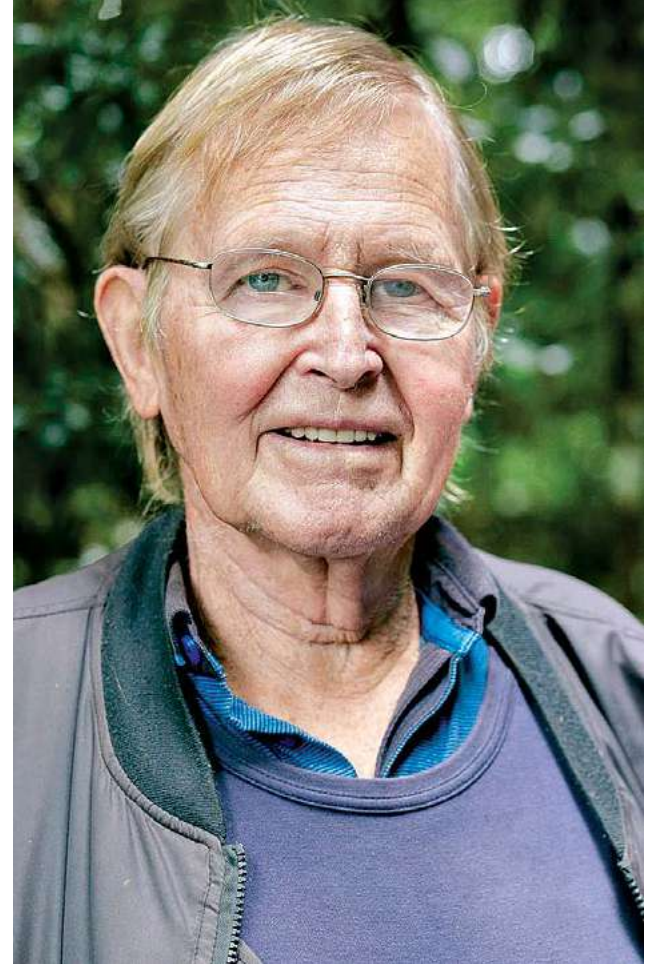
protecting various coastal habitats.

Hermann was an active member of many organisations, both within Council, and in the broader community. He worked within Council's Water Board, pushing his vision for a better water quality and effluent treatment. He was integral in shaping Council's Town Plan, helping to shape and preserve the liveability of the Sunshine Coast. Hermann was an avid supporter of the Sunshine Coast Environment Council, often working closely with them to preserve and protect local environment.

"My father had strong views on many things," said his daughter, Cornelia Schwabe.

"Even after leaving Council, he was dedicated to the betterment of the Sunshine Coast. He was a man who stood up for what he believed in, he stood in his integrity and he relentlessly pursued a more effective, more environmentally friendly and generally better way, in all that he did. This did not always lead to his popularity, but it has absolutely helped to shape the the Sunshine Coast, in terms of developments, lifestyle and the environment, and has impacted on the lives of many.

"Over the years, I have learned so much from my father, and among the strongest ideals that I have gained from him is to stand up for what I believe in, both for myself and for others; to give a voice to those who are unable to exercise their own, and never, ever give up. My father was a man of passion, vision and determination. When the community said, 'someone should do something



about that', my father answered with 'I am someone'. In my family at least, this will echo through the generations."

Hermann Schwabe passed on August 7, 2024 at Sunshine Coast University Hospital. He had battled with increasing dementia for a number of years, after a stroke in 2021. He will be remembered for his vision, strength, dedication, passion and so much more.

A public memorial will be held for Hermann, which will be organised by his daughters, Cornelia and Heidi. If you would like to be involved, share memories or just be informed of the time and place of the memorial, please contact Cornelia, at remembering-hermann@gmail.com.

URBAN DEPOT RECYCLING CENTRE NAMBOUR

Get Cash for Containers

- Collect your eligible containers and remove the lids.
- Visit us at our full drive through recycling experience.
- Let us sort and count your containers.
- We bring your cash refund to your vehicle or we deposit your refund into your scheme ID account.

EASY!



Visit us at our full drive through recycling experience at 7/1 Windsor Road, Burnside | 0492 846 936
info@urbandepotrecycle.com | urbandepotrecycle.com



Brady's Fruit

FRUIT & VEGETABLE SPECIALIST
• Wholesale & Retail •

Col & Sandy Pearce
Ph/Fax 07 5445 9260

Park at your leisure where shopping is a pleasure

Woombye-Palmwoods Rd.
Palmwoods, Q. 4555

"IT'S TIME TO REFRESH YOUR DECOR FOR SPRING"

Bring those tired pictures back to life with modern frames and UV resistant low reflection glass

Add a custom mirror to add light and movement to dark areas in your home

Get those pictures out of the drawer and onto your wall to be admired and appreciated

Our art space has fabulous works by local artists for sale - something to suit all tastes and budgets

Our painting conservator Sophie can bring your dull art works back to life

Yandina Art & Framing
Framing | Art Space | Art Supplies

ART SUPPLIES WINTER CLEARANCE SALE WITH UP TO 50% OFF

7 Stevens Street Yandina, Q 4561

[f](https://www.facebook.com/yandinaartframing) [i](https://www.instagram.com/yandinaartframing) admin@yandinaartframing.com.au 07 5446 8000 Trading 6 days: Mon - Fri 9:30 - 4 Sat 9 - 2

Palmwoods-Montville Road Landslip repairs ...

from Andrew Powell
State Member for Glass House
glass.house@parliament.qld.gov.au



Landslip repairs are commencing mid-August for Palmwoods-Montville Road. During this time, a 400m section of the road must be fully closed. Traffic will be detoured via Razorback and Hunchy Roads. The works are expected to take approximately eight weeks, and over 20 landslip sites will be repaired, along with major reconstruction on a 60-metre section of roadway.

Works undertaken will include clearing, excavation and rock scaling, rockfill installation and drainage works, soil nailing and shotcreting. Motorists are advised to allow for additional travel time due to the detour and are reminded to drive to the changed traffic conditions. Works will generally be undertaken Monday to Friday between 6:30am and 6:30pm.

Vietnam Veterans Day

This year's Vietnam Veterans Day was the 51st Anniversary of the end of the Australian involvement in the War and 58th Anniversary of the Battle of Long Tan. I commemorated the day at the Glasshouse Country Sub-RSL Branch.

Unfortunately, many returned servicemen and women were met with strong anti-war sentiment and treated unfairly by their peers, leading to isolation in an already incredibly difficult transition. We didn't say it enough when they returned so it is important that we say it now - thank you for your service. Lest We Forget.

New Marquees for Community Groups

Last week I had the pleasure of delivering some shiny new marquees - in less than shiny weather - to Montville State School, the Mooloolah Men's Shed and Mooloolah Valley Lions. Personalised marquee design, purchase and delivery is a service I offer all community groups in the electorate of Glass House. I collect the details of interested groups and place one or two marquee orders a year. When they are ready, I hand deliver them to you ... how's that for door-to-door service!

If your community group is interested in receiving a marquee, at glass.house@parliament.qld.gov.au to be added to the list.

Nambour women win third rugby premiership in row

NAMBOUR have claimed their third Sunshine Coast Rugby's women's premiership in a row after defeating Brothers 21-18 in a nail-biting finish at University on Saturday (August 17).

Nambour crossed the line in the dying minutes but the try was ruled out because of a forward pass. But Coach Luke Zeremes said the girls kept their composure to cross again for the winning try on the final whistle.

"Anyone who watched that game, but especially that last few minutes, knows that a coach or anyone involved in a team that wins a game like that on the death is going to be pretty excited," said Zeremes. "Even with ten minutes to go the message to the girls was just to stay patient. Keep that self belief. We've had some close games during the year and we took a lot of confidence out of those. I really feel for Brothers. They've been the standout team all season. And they deserved that just as much as us. But at the end of the day our girls kept their self belief and got the job done."



Brothers coach Jeff Flood said the experience would hold his team in good stead for next season. "Nambour, right across the paddock, are a highly talented, fit, skillful team. Our girls have learnt a lot of those skills, putting structure together. That was an epic battle."

Brothers coach Jeff Flood said the experience would hold his team in good stead for next season. "Nambour, right across the paddock, are a highly talented, fit, skillful team. Our girls have learnt a lot of those skills, putting structure together. That was an epic battle."

If any one wants to have a reason, thinking 'should I go and watch women's rugby?' All that there is an example of why you should be down watching women's rugby."

Senior Men lose GF to Maroochydore

In the C Grade Cricks Cup Grand Final played on Friday night Nambour Men were also aiming for their third premiership in a row. But they were beaten 25-3 after an outstanding defensive effort by the Swans.

"They were just too good, man, too good defensively," said Nambour coach Isaac Finch. "Maroochydore did really well tonight. They played in front of their home crowd and I think the crowd sort of willed them over a bit."

Finch said Nambour was always looking to go up a level and play in B or A grade. "Oh, yeah, that's always a goal. At the end of the day, it just comes down to numbers. We only have enough for one team at the moment. So C Grade's where we've going to stay up until we can get two teams going."

Finch said the Club's emphasis was on building the junior ranks and said there were promising signs. "But they're still a bit young. They'll probably be 15, 16 next year. So we've got a couple of years, we need to hold off for just to make sure we can start feeding them through properly. Can't rush it."

• Pics: Patrick Gillett.



Monster Trucks coming to Nambour

THE Monster Trucks Tour of Destruction will take place at Nambour Showgrounds on Saturday, August 24, 2024, from 5pm to 6.45pm. This event will showcase a range of thrilling displays, including monster trucks performing stunts and car crushing, the flame-throwing Jetvan, FMX tricks, and a fireworks finale.

Gates will open at 2.30pm, allowing attendees ample time to choose their seats and enjoy the full range of activities on offer. General admission tickets are available for \$50 for adults and \$35 for children aged 2-14, with family packages also offered. Premium seating options include Gold Grandstand and Silver On Track seating for closer views of the event.

The evening promises to be a unique spectacle of skill and machinery, with something for all ages. Those interested in attending are encouraged to secure tickets in advance to ensure availability. For further information and seating arrangements, visit the Nambour Showgrounds website.

• Bookings via [eventbrite.com](https://www.eventbrite.com) (search monster trucks).

Nambour Chamber to host networking event at The Big Pineapple

NAMBOUR Chamber of Commerce, in collaboration with the Woombye and Palmwoods business associations, is holding a combined networking and Coffee Catchup event at The Big Pineapple on Wednesday, September 4. Attendees are invited to arrive at 7.45am for an 8am start.

The event will provide insights into the Stage 2 Plan for The Big Pineapple, directly from those involved in the project. The Sunshine Coast Council's Economic Development team will

also share information on upcoming business opportunities in the region. Presidents from both the Woombye and Palmwoods Community & Business Associations will offer updates on developments within their local areas.

Nambour Chamber of Commerce President Mark Bray highlighted the importance of the event: "This is a great opportunity for local businesses to connect, share knowledge, and collaborate on future initiatives. It's a chance

to learn about key projects and grow the strong business community we have here in the hinterland."

• Non-members are welcome to attend for just \$5, which includes a barista-made coffee. Members of the Nambour Chamber of Commerce attend free of charge.

Follow Nambour Chamber of Commerce Facebook page for further information regarding the event.

Proudly serving the Sunshine Coast for over 16 yrs

DentalExcel

WE'RE HERE FOR YOU!

NOW OPEN FOR ALL PROCEDURES

In line with Stage 1 restrictions, we look forward to welcoming you back for ALL of your dental needs.

COVID-19 Screening measures in place to ensure safety.

Dental Excel is grateful for the dedication of our staff who have been there for your emergency treatments throughout this crisis. We are still here for you and still adhering to strict hygiene precautions to keep you and us safe.

Dental Excel is proud to be a part of the MARLEY DENTAL GROUP

DentalExcel

Bulk Billing Medicare Child
Dental Benefit Scheme for Eligible 2-17 yrs

- Family Dentistry • General Dentistry • Cosmetic Enhancements • Zoom® Teeth Whitening
- Veneers • Crown and Bridge • White Fillings • Preventative Dentistry • Children's Care
- Gum Disease Maintenance • Dentures and Veterans Affairs • Dental Implants

Payment plans available - no interest ever

Open Monday to Saturday • Early and Late Appointments [afterpay](#) [zip money](#)

Ph: 5445 0166 2-4 Margaret Street, Palmwoods www.dentalexcel.com.au

ASPHALT & BASE CONSTRUCTION CALL JOSEPH 07 5478 9834 | 0402 932 159

38 YEARS EXPERIENCE FREE QUOTES

RED BROWN & BLACK ASPHALT | MACHINE & HAND LAID HOTMIX ASPHALT

- CAR PARKS
- SALES YARDS & DISPLAY AREAS
- DRIVEWAYS
- TENNIS COURTS
- FOOTPATHS, KERBS
- GRAVEL ROAD
- CRACK SEALING
- PRIVATE ROADS
- SPEED HUMPS
- MODERN, STYLISH EDGING
- EXCAVATIONS & DRAINAGE

www.asphaltbaseconstruction.com.au

Earthmoving • Cranes • Trucks • Hydraulics • Attachments

GR FLEET SERVICES
DIESEL MAINTENANCE & REPAIRS

We service and repair all makes of earthmoving machinery, cranes and trucks.

From Warranty Servicing to hydraulic hose repairs we have you covered.

FULLY EQUIPPED WORKSHOP + FIELD SERVICE

Authorised Dealers

169 Nicklin Road, Palmwoods • 5457 3066 • grfleet.com.au



MARKET SPECIALS

Australian Lamb Loin Chops



\$15 kg



Australian Strawberries
500gm Punnet



\$7.90 Per Kg

\$3.95 ea

Australian Pink Lady Apples



\$3.95 kg

Australian Tomatoes



\$2.95 kg

Australian Cauliflower



\$2.95 ea

Australian Continental Cucumbers



\$1.95 ea

Australian Beef Rump Steak



\$15 kg

WHILE STOCKS LAST

3 DAY SPECIAL VALID 23RD, 24TH, 25TH AUGUST 2024

SCAN TO SUBSCRIBE TO OUR LATEST WEEKLY CATALOGUE STRAIGHT TO YOUR INBOX!



**OPEN
7 DAYS!**

SPAR
PALMWOODS
7 MAIN ST, PALMWOODS
PH: 5436 6147

SPAR
WOOMBYE
20 BLACKALL ST, WOOMBYE
PH: 5413 8007



Specials available while stocks last. Limit rights reserved. We reserve the right to correct any printing errors and omissions.

Landslip repairs completed

from Winston Johnston
Division 5 Councillor
Division5@sunshinecoast.qld.gov.au



Roads are among the most important pieces of infrastructure for our hinterland communities.

During the February 2022 rain deluge the Sunshine Coast experienced many landslips that impacted Division 5 roads, particularly on steep slopes.

The most affected were: Policemans Spur Road, Wootha; River Road, Maleny; Perrins Road, Eudlo; Narrows Road, Montville; Leeding Road, Glenview; Brandenburg Road, Mooloolah; Bald Knob Road, Bald Knob and three major slips on Howard Road, Bald Knob.

I'm very happy to report that our dedicated road maintenance team has now completed the extensive remedial repair works on these roads.

Thank you to the impacted residents for being patient over the past 18 months.

Lookout improvement

The fantastic new lookout on Mountain View Road, Maleny, makes this location a safer place to park and take in the stunning Glass House Mountains view.

This lookout became popular during Covid-19 as a great drive destination to escape cabin fever.

Its popularity has increased ever since, with around 22 cars parking there on fine days to watch the sunset and take photos of the expansive mountain vista.

Razorback investigation

Council is looking for potential design solutions to improve safety on Razorback Road, from Hunchy Road to Montville School Road intersection in Hunchy.

In recent years, sections of the road have sunk, and safety railings damaged by vehicles.

During design phases and the investigation period, there'll be various contractors onsite surveying, counting traffic, and making environmental assessments.

Thank you for your understanding as we carry out this important work.



The building features spaces for 'team-teaching,' replacing traditional classrooms with flexible learning zones.

First look inside the new primary school building



College principal Greg Mattiske.

A state-of-the-art primary school building at Suncoast Christian College in Woombye officially opened Wednesday, August 7, marked by a special ceremony attended by students, staff, and the community.

The 4750-square-metre facility, which accommodates 450 students, was completed in 580 days and is designed to support diverse learning needs across three levels.

The building, designed by m3architecture, features innovative spaces for collaborative 'team-teaching,' replacing traditional classrooms with flexible learning zones.

"Our mission is to grow stu-

dents in their faith, character, and learning," said College principal Greg Mattiske.

He said that the new facility offers optimal social, emotional, and academic outcomes for students.

The building's design also includes a unique steel mesh adorned with 6,000 stainless steel discs forming a honeycomb pattern, allowing natural light and ventilation.

Melanie Mitchell, Head of Primary, highlighted that the new building transforms the school's approach to education, creating adaptable environments that cater to the diverse needs of students.

Blues celebrate strong AFL finish in Division 1 as 13s advance to semi-finals

THE Hinterland Blues' 2024 senior season concluded on Saturday as both the Seniors and Reserves teams were defeated by the University of Queensland Red Lions. Despite the losses, it was an impressive season for the club, particularly in their second year in Division 1. The Seniors made it to the second round of finals, and the Reserves team, which hadn't won a game until Round 2 this year, showed remarkable progress.

Special thanks go to the Senior coaching team: Phil Birchmore, Steve Senn, Brendan Palmer, Jordan Lovini, Shaun Silver, and Alex Seare for their dedication on and off the field. The club also acknowledged the efforts of managers Peter Brisbane and Jess Pople.

A big congratulations to the Blues' Under-13 Girls team, who advanced to the next round of finals with a win over the Maroochy Flyers. They will face Caloundra in the semi-final this Sunday, with game details to be announced soon.

The club also extended gratitude to their junior coaches, Tim Lowes and Rohan Kapoor, for their work with the Under-8s and Under-9s. The juniors wrapped up their season with matches against Coolum and Noosa. Thanks were also extended to team managers Alexandria Kapoor, and James and Stacey Small.

The Hinterland Blues are already looking forward to another successful season in 2025.

RESULTS:

• Seniors - Uni 17.13 (115) v. Hinterland Blues 9.10 (64). Goals: T. Wischnat (4); R. Magin (2); D. Brosnan (2); M. Lawrence. Bests: B. Finlay; I. Richardson; D. McKendry; N. Widdicombe; D. Killworth; T. Cuffe.

• Reserves - Uni 18.19 (117) v. Hinterland Blues 6.8 (44).

Goals: R. Anderson; C. Lee; R. McCormack; E. Modlin; C. Robertson; K. Disney

Bests: H. Brisbane; L. McCormick; D. Ballard; D. McCullough; C. Lee; L. Moore

• Under 13 Girls - Maroochydhore 3.2 (20) v. Hinterland Blues 9.8 (62).

HEALING TOUCH FOR ANIMALS

through Pet Cremation and Twilight Care

Having pets is a fulfilling experience: they show us what it means to truly love unconditionally. As they reach their senior years, Healing Touch for Animals is a wonderful way to help keep your loving companions well and comfortable.

This therapy brings the pet's major and minor chakras into alignment to stimulate their natural healing abilities, helping to restore balance to their body, mind, and soul.

Our gentle but impactful healing sessions can significantly enhance their quality of life. Sessions last approximately an hour and support your pet to relax, become calmer and more restful. It is also useful for behavioural problems.

For more information or to book a session, call or message me on 0468 934 864. Also see Facebook at Twilight Care for Pets or visit my website at www.petcremationandtwilightcaresunshinecoast.com

0468 934 864 OR 0408 827 965 contact@petsendoff.com



N

THE
NEWSTEAD
FUND

EQUITY CAPITAL FUND
Investment Summary

Looking for the peace of mind of monthly returns?

The Newstead Fund team can help you to strategically diversify your portfolio using a time-tested investment concept of Real Estate, Equity Allocations and Asset Laddering, which offers a comprehensive investment method that leverages the tangible value inherent in real estate.

To find out more, go to www.thenewsteadfund.com.au

salon

haarscharf

men's
modern cutting,
perms and colouring,
beard cutting/maintenance

ladies
modern cutting, blow dry/styling,
various colouring techniques,
perming and styling support

tuesday - friday : 9am - 6pm // saturday : 9am - 1pm
other times on request

122 Nambour Mapleton Road, Nambour
Nathan 0430 374 319 Hubert 0461 579 356

AUTO ELECTRICS QLD
AEQ
MECHANICAL
5442 2278

* AIR CONDITIONING
* AUTO ELECTRICS

* MECHANICAL REPAIRS
* LOG BOOK SERVICING

07 5442 2278

227 Nambour Connection Rd, Woombye

autoelectricssql.com.au

Salvation Army faces rising demand amid cost of living issues

by Cameron Outridge

THE Nambour Salvation Army is experiencing a surge in demand for its services as the rising cost of living continues to strain communities across the hinterland.

Nambour Captain David Donaldson outlined growing pressures that have led more individuals and families to seek support.

"We are tremendously blessed with great volunteers and staff who are always willing to help. As always, our local community supports The Army with donations. But there has been a considerable increase in the number of people we are serving," Captain Donaldson said.

He said the Salvos had witnessed a marked rise in the number of people seeking assistance, including food provision and financial planning services.

"The Salvation Army serves many different types of people in various services. There has been an increase for food provision and financial planning."

This increase was not just limited to the traditionally vulnerable. "We are seeing more people coming to us, and we are seeing more people come to us who are employed," he added. "Families where you see both partners employed are coming to us for help because that kind of breadline, that survival line is month-by-month now, and you're seeing it getting squeezed tighter and tighter all the time."

The situation was becoming increasingly common, even among those who were previously more financially secure. "In our experience it's right across society and right across all



Salvation Army Captain David Donaldson, centre, with, from left, Manager Katherine Miller and volunteers Karen Kelson, Deb Celary and Helen Watt.

levels. It used to be more confined to the lower end of our community, the unemployed, the homeless. But now it's right across the scope of our community that we're seeing people who are requiring help for very different things," Captain Donaldson said.

The Salvation Army has also noted a rise in people needing assistance for more specific needs, such as school provisions for children and even fuel. "From things like even filling people's car up with petrol - we've done that - right across the spectrum to domestic violence, family breakup and housing needs," he said.

Captain Donaldson recently attended Ted O'Brien's Fairfax Cost of Living Forum and emphasised the importance of continued dialogue with policymakers. "I welcome engagement from our elected officials," he said. "What was particularly pleasing was that the forum was established so that MPs could listen to what was happening within our communities," he said.

"It is important that this sort of forum isn't a one-off. Each organisation was able to speak for a few minutes on the issues they

were facing, however, there is so much more that should be heard which effects our local communities."

Despite the rising demand, Captain Donaldson remains hopeful that awareness of available help will continue to grow. "We don't want to be making it more than it is, but we have seen an increase - and maybe people have just become more aware that there's help available for them. Maybe the word is getting out. You don't have to be on your last legs. Know there's a problem and come in, and we'll help you with that if we can; the old adage, 'where there's a need, there's The Army', is still true today.

As cost-of-living pressures continue, the Nambour Salvation Army is committed to offering support to anyone in need. The organisation works tirelessly to ensure that no one faces these challenges alone.

- The Salvation Army Church is at 4/6 Maud St Nambour 5441 7307. The Salvation Army Family Store is at 163 Currie St 5441 6458. There are Op Shops at Maleny and Montville.

Community mourns loss of local businesswoman

PALMWOODS is mourning the loss of well known business owner Sandra Lea Pearce, who passed away peacefully at her home on August 9, aged 60.

Sandra, alongside her husband Colin and son Brendan, was a familiar face and the co-owner of Brady's Fruit, a popular local business that has served the community for many years. Her friendly demeanor and dedication to providing fresh, quality produce made her a beloved figure in Palmwoods.

Beyond her contributions to local commerce, Sandra was a devoted wife to Colin and a loving mother and mother-in-law to Brendan, Matt, and Tayla. She was also a grandmother to Hallie and Johnny.

Her family invites friends and community members to join in celebrating Sandra's life at a service to be held at the Gregson and Weight Chapel, 34 National Park Road in Nambour, on Tuesday, August 27 at 11am. The family would love attendees to wear bright colours.



Seeing Clearly Starts Here, Nambour ...

Don't let blurred vision go unnoticed. Our comprehensive eye examinations ensure every detail of your vision is crystal clear. From detecting early signs of eye conditions to prescribing individually-tailored corrective lenses, we're dedicated to safeguarding your sight.

WILSON FITZPATRICK FAMILY OPTOMETRISTS

Call the team on 5441 2277
book online at www.wfoptometry.com.au
or visit 40 Howard Street Nambour

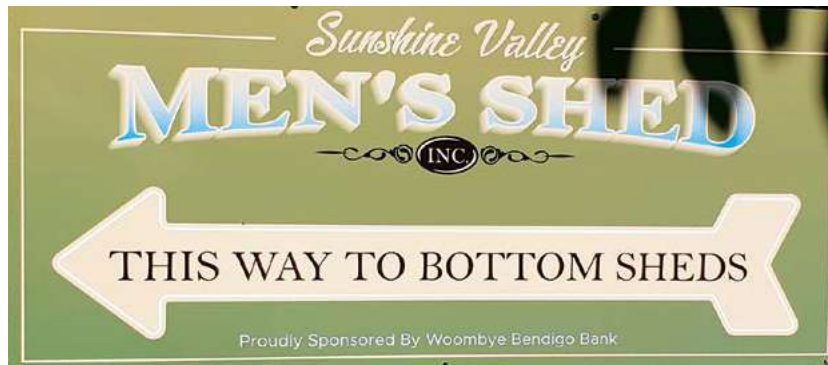


The PCB Ltd Directors and Staff of the Heritage Community Bank are proud to support the Sunshine Coast Men's Shed with sponsorship for various items that the group needed.



PCB Ltd, Palmwoods Community Branch Ltd, PO Box 92 Palmwoods, QLD, 4555 ACN 115370011
ABN 32 087 652 024, AFSL 240984, Australian Credit Licence 240984

The PCB Ltd and the Heritage Palmwoods Community Bank Staff continue to proudly Support the Palmwoods Community



MALENY APEX & MALENY SHOW SOCIETY PRESENTS THE

11TH MUSCLE ON THE MOUNTAIN

MALENY APEX AUSTRALIA

SUNDAY, 8TH SEPTEMBER 2024

MALENY SHOW GROUNDS 7AM-1PM

MUSIC • COFFEE • FOOD
LUCKY CAR PRIZES • PEOPLE'S CHOICE AWARDS

\$5 ENTRY
UNDER 12 FREE



CASH ONLY
AT THE GATE

EFTPOS AVAILABLE
IN THE GROUNDS



MALENY & HINTERLAND REAL ESTATE

SOMMER PETROLEUM

M.A.S. SERVICE CENTRE

Maleny Coachlines

Graphic Design
Award-Winning Graphic Designer
M: 0404 581 026
www.kbgd.com.au

BRIDGESTONE SERVICE CENTRE MALENY



Proudly Supporting
Prostate Cancer Foundation of Australia
MHA Maleny Hospital Auxiliary

muscleonthemountain E: apexmalenyclub@hotmail.com

Event 7am until 1pm. Vehicles need to stay on grounds until event is finished.
Admission is \$5.00 per adult. Under 12 years of age is free.
CASH ONLY. No EFT facilities available on grounds.

MP launches petition for satellite hospital



NICKLIN MP Rob Skelton has launched a call for a satellite hospital based on the Sunshine Coast.

Since 2020, the Government has built seven new satellite hospitals across South East Queensland with more than 130,000 Queenslanders accessing healthcare from them.

Initial data from Queensland Health has demonstrated a 12% reduction in presentations at local hospitals, as a result of the local satellite hospital.

The services provided at these satellite hospitals include free walk-in, urgent care for illnesses and injuries not anticipated to be life-threatening in nature and outpatient services such as mental health services, kidney dialysis and other allied health services.

"Labor's Satellite Hospitals have been highly successful in reducing pressure on our local

hospitals," Mr Skelton said. "They make an incredibly effective addition to the local health-care network and provide Queenslanders with greater choice to access free walk-in urgent care."

"Since being elected as the MP for Nicklin, I have been committed to delivering better healthcare on the Sunshine Coast—including delivering the Nambour Hospital Expansion which will deliver an extra 118 beds and an expanded ED."

"Now, I want to see a Satellite Hospital on the Sunshine Coast so that our region can experience the same benefits as the rest of the South East."

Mr Skelton encouraged all Sunshine Coast residents to sign his petition: <https://form.123formbuilder.com/6714495/satellite-hospital-nicklin>

RSPCA fundraiser: High Tea with bubbles and band



IT'S that time of year when the RSPCA are raising much needed funds for animal welfare by putting on their annual "Cupcake day" fundraiser. This year, Tracey Reno and Shan Tilley are taking it one step further by hosting a lavish High Tea Thursday 29th August, from 1pm to 4pm.

"Nambour Crushers Rugby League Club have generously donated the use of their newly renovated clubhouse to hold our High Tea event," Shan said. "For \$60 per head, our guests will receive a glass of bubbles on arrival and a lucky door prize. There will be delectable homemade petite savouries and sweets, including traditional finger sandwiches, petite quiches, scones - with jam and cream, of course - and

lemon curd tartlets, just to name a few."

Local band *The Shoplifters* have kindly donated their time to support the event and the RSPCA.

"I would like to extend a huge thank you to our local business community for donating for our raffles," said Shan. "Grab your friends for a fantastic afternoon of great food and entertainment, all for a good cause."

To purchase your ticket please contact Shan crazyforcupcakes3@gmail.com or go to the high tea for the RSPCA Facebook event page.

Welcome to Sunshine Coast Audiology



Sunshine Coast Audiology

We are a new independent audiology clinic located at Sippy Downs, providing personalised hearing care to the community. We are able to recommend, fit and adjust hearing devices from all leading brands and will do what is right for you.

Our services include:

- **NOW OFFERING WAX REMOVAL** via microsuction, curette or irrigation
- Hearing tests for adults or school-aged children
- Hearing aid fitting, repairs and adjustment from all major brands
- Providers of the Hearing Services Program for eligible pensioners and veterans
- Tinnitus management
- Supply and fitting of ear plugs for swimming, noise and music



Emryn Maclachlan



Anita Burgess

Call **07 5378 2226** or email info@sunshinecoastaudiology.com.au

Shop 10, 1 Scholars Drive, Sippy Downs

www.sunshinecoastaudiology.com.au

Unleash your dog's potential with Wild Spirit Dog Training

Business Writeup
by Cameron Outridge

AT Wild Spirit Dog Training and Behaviour, Claire Evelyn's approach to dog training goes beyond basic obedience commands. With over 12 years of experience, Claire is dedicated to nurturing the unique personalities of each dog she works with, ensuring that their wild spirits remain intact while fostering a harmonious relationship between dogs and their guardians.

"I have a lot of respect for the beautiful, wild spirits of our canine companions," says Claire, who has combined her extensive knowledge of dog psychology with a passion for animal welfare. "My methods are holistic, considering the balance of a dog's body, mind, emotions, and spirit. I believe that compassionate, consistent training can provide dogs with the leadership they need without breaking their spirits."

Claire's background is as fascinating as her approach to training. As the daughter of a wildlife ranger, her childhood was steeped in a deep connection with animals and nature. "I grew up surrounded by animals, learning to observe and listen to their subtle forms of communication. This connection with animals has been the foundation of my life's work."

"The goodness that dogs have bestowed on me throughout my life is immeasurable, and I'm committed to giving back to them."

Her expertise extends beyond dog training; Claire has studied

martial arts, Taoist philosophy, and Chinese medicine, all of which inform her unique approach. "There is a magic involved in dog training," she said. "It's discoverable through the deep presence required to work effectively with dogs. When we tune into the moment, we experience the magic of connection and subtle communication. Incredible things can happen."

One of Claire's most cherished training partners is her Border Collie, Waylan. Together, they form the Wild Spirit team, demonstrating obedience tasks and assisting with behaviour modification during private training sessions. "Waylan has been training dogs for years, and his presence helps to calm and guide other dogs. He's truly a magical, special dog," Claire said.

Training with Claire isn't just about teaching dogs commands; it's about fostering a deeper bond between dogs and their guardians. "I teach my clients how to apply compassionate, assertive leadership to deepen trust, increase their bond with their dogs, and set boundaries that create harmony within the family," Claire says. "The leadership tools we learn through dog training can have a dramatically positive impact on all of our relationships and our overall happiness."

After years of working as the head trainer at a renowned assistance dog organisation on the Sunshine Coast, Claire decided to bring her expertise to the local community through Wild Spirit



Mapleton dog trainer Claire Evelyn and her trusted companion, Waylan, bring a unique blend of compassion and expertise to every dog training session.

Dog Training and Behaviour. "I'm passionate about supporting dogs and their guardians in finding balance and greater enjoyment in their lives," she says. "The goodness that dogs have bestowed on me throughout my life is immeasurable, and I'm committed to giving back to them."

If you're looking for a dog trainer who blends compassion with science, respects the individual spirit of your dog, and has a lifelong pas-

sion for animal welfare, Wild Spirit Dog Training and Behaviour is the perfect choice. Claire Evelyn and her canine partner, Waylan, are ready to help you and your dog embark on a journey of growth and connection.

For more information, contact Wild Spirit Dog Training and Behaviour on 0402 943 511 or visit wildspiritdogs.com. Claire offers in-home puppy training and one-on-one dog obedience training.



Orchid Society gears up for Spring and Species Shows

THE Nambour Orchid Society is excited to announce its upcoming events, set to captivate plant enthusiasts and support the community. Mark your calendars for two special shows that will feature stunning orchid displays, plant sales, and more.

First up is the Spring Show, taking place on September 6th and 7th, 2024, at the Nambour Uniting Church, Coronation Ave, Nambour. The event will run from 8am to 3:30pm on Friday and from 8am to 1pm on Saturday. Visitors can expect to see benched orchid displays, a variety of orchid and foliage plant sales, and member plant sales. There will also be \$1 raffles, adding to the excitement.

Following the Spring Show, the Species Show will be held on November 9th, 2024, from 8am to 4pm at the Buderim Uniting Church, Gloucester Road, Buderim. This event will also feature benched orchid displays, orchid and foliage plant sales, and \$1 raffles, along with six vendors offering a wide selection of plants.

Both events offer \$5 admission, with Eftpos available for convenience. Refreshments will be on hand to keep visitors fueled as they explore the beautiful displays. For more information, you can reach out to the Nambour Orchid Society at nambourorchids@gmail.com.

Don't miss these wonderful opportunities to enjoy the beauty of orchids and support a local society dedicated to horticulture and community service.



The Denture Care Group
Sunshine Coast

Caloundra | Maleny | Woombye



BEFORE



AFTER

MAKE THE MOST OF YOUR HEALTH FUND THIS YEAR CONTACT US TO FIND OUT HOW

Book a Consult with us this month so we can help you get the most out of your benefits and have you leave smiling.



P 07 5442 1721

HINTERLAND VIEW DENTAL 6 Hill Street, Woombye
denturecaregroup@gmail.com



ELITE FOOT CARE
Podiatry • Orthotics • Footwear

Online Bookings Available

Call Elite Foot Care on **5328 3588** to book your appointment



For online bookings
www.elitefootcare.com.au

DO YOU HAVE FOOT AND LEG PAIN?

Call **5328 3588**

• Private Health Rebates • Medicare Rebates
• DVA Registered • NDIS • Workcover
• Home Care Packages • No Referral Needed

The team at Elite Foot Care can treat:

- Ingrown Nails
- Corns & Callus
- Heel Pain
- Achilles Pain
- Shin Splints
- Arthritis
- Knee & Hip Pain
- Lower Back Pain
- Kids Podiatry
- Diabetic Assessment

4/40 Wilson Avenue, Woombye
Corner of Blackall Street and Nambour Connection Road

OPEN HOURS: Mon-Fri 8:30am – 5pm www.elitefootcare.com.au



ENROL NOW

Year 7 in 2025

Discover the excellence in education through our prestigious Pinnacle Program. With five different pathways on offer, there is something for everyone.

In addition to our Pinnacle Program, we offer unique opportunities through the Nambour Academy of Creative Arts and the Thunder Volleyball Program, catering to every student's passion and talent.

Enrol before the end of Term 3 to secure your child's position in the Term 4 Pinnacle Gala Day.

Unlock your child's potential today!

Enrol now for Year 7 in 2025 - Scan the QR code:



or visit our website at <https://namboursc.eq.edu.au/enrolments> or email enrol@namboursc.eq.edu.au



Senior Campus 1 Carroll Street, Nambour QLD 4560 Phone: 5450 4111
Junior Campus 70 Coronation Avenue, Nambour QLD 4560 Phone: 5459 0333
enrol@namboursc.eq.edu.au <https://namboursc.eq.edu.au> Nambour State College

CRICOS Provider Code: 00608A

LOCAL FOUNDATIONS; GLOBAL OPPORTUNITIES



Rob Skelton with Club President Maurice Mahady and Heritage Bank Palmwoods Committee Chairman Craig Agnew.

Palmwoods Tennis Club celebrates court upgrades with official opening

PALMWOODS Tennis Club is serving up success with the recent completion of major upgrades to its tennis courts, funded through an \$81,814 grant from Round One of the Minor Infrastructure Program. The courts, originally resurfaced in 2008, had deteriorated over time, with worn synthetic grass, tears, and uneven patches creating safety concerns.

Now, after extensive resurfacing, the courts have been restored to a smooth, safe playing surface that meets all facility standards. Despite challenges from wet weather, the project was completed earlier this year, and the club is now ready to get back into full swing.

At the official opening of the courts, Member for Nicklin Rob Skelton praised the investment: "The \$82,000 investment from the Miles government, alongside a contribution from Heritage Bank Palmwoods, will ensure the club has room to grow into the future." He also thanked the club president and Tennis Queensland for their support at the opening event.

With these upgrades, Palmwoods Tennis Club is poised to continue growing its membership and fostering a thriving tennis community.



College's student innovators propose city of the future

NAMBOUR State College recently hosted its annual Pinnacle Innovators Immersion Day for students involved in the three-year program focussing on innovation and technologies. BoP Innovation, experts in helping students harness their ideas for innovation and future planning, delivered a full day experience in the College's auditorium.

The year 8 and 9 students involved focused on improving issues in the Nambour community as well as learning about urban innovations taking place all over the world.

Students identified local issues with safety, accessibility, youth needs, consumer patterns and healthcare. The group used a variety of online research techniques to conclude that areas requiring improvement included the amount of school basketball courts, wait times at Nambour Hospital, accessibility and safety at the skatepark, and the layout and consumer needs of Nambour Plaza.

Students spent the afternoon preparing pitches delivered alongside multimodal presentations. Standout pitches included

Jasper, Declan and Seth's proposal to improve wait times at Nambour Hospital by supplying patients with tokens linked to timers as they arrived at emergency and utilising artificial intelligence to complete triage and match presenting patients to the right health service.

Sam, Eli, Riley and Jay focussed on the needs of the College and proposed further basketball courts in response to the popularity of the sport at break times and increased murals to continue the mural trail around all sides of the College.

Students had a fantastic time "learning and getting to spend time with our best friends" building on their innovation skills they have been developing all year.

Pinnacle Innovators have a specialist lesson each week where they gain further enrichment for their innovation and digital technology skills. Applications for the 2025 Pinnacle Program are now open and can be found on the Nambour State College website: <https://namboursc.eq.edu.au/curriculum/excellence-programs>

Sunshine Coast Satellite Hospital petition

from Rob Skelton

State Member for Nicklin
nicklin@parliament.qld.gov.au



Since being elected as your local MP, I have been committed to delivering better healthcare on the Sunshine Coast—including the Nambour Hospital Expansion which will see an extra 118 beds and an expanded emergency department.

Now, I want to see a Satellite Hospital on the Sunshine Coast. Satellite Hospitals have been highly successful in reducing pressure on our local hospitals. They make an incredibly effective addition to the local healthcare network and provide Queenslanders with greater choice to access free walk-in urgent care.

A Sunshine Coast Satellite Hospital means our region can experience the same benefits as the rest of the South East.

If you support this, you can sign my petition at bit.ly/SCSatelliteHospital, or by visiting my Facebook page.

Suncoast Christian College Primary School building opening

I was delighted to attend Suncoast Christian College's grand opening for their new Primary Education Building.

Well done to the Suncoast Christian College community for organising such a fantastic event to commemorate the opening. The construction was completed with the help of a \$2 Million grant from the Queensland government.

Bruce Highway resurfacing works

My Office has been advised TMR will be undertaking resurfacing works on the southbound carriageway of the Bruce Highway, between the Parklands interchange and the Kiel Mountain Road overpass.

These works include resurfacing and rehabilitation to the ramps at the Bli Bli interchange and will start in mid-August 2024, taking up to six weeks to complete, weather and construction conditions permitting.

I thank everyone for their patience and understanding while these works are ongoing.

If you have any questions or concerns at all, please don't hesitate to contact my office on 5406 4100, or email us at nicklin@parliament.qld.gov.au.



BOQ Nambour & Hinterland in the heart of your community.

BOQ Nambour & Hinterland is proud to support our local community and we'll continue to work hard to show you how.

BOQ Nambour & Hinterland

Matt Wall, Owner-Manager

0448 690 577 07 5376 9999

matt.wall@boq.com.au

facebook.com/boqnambourhinterland



Changes at the Fred Murray Building

David Law
Division 10 Councillor
david.law@sunshinecoast.qld.gov.au



I'm pleased to see the works progressing since early August, as Hutchinson Builders started initial investigations and site preparations for the Fred Murray Building project.

The first stages included the installation of temporary fencing and bollards around the loading zone and precinct areas of the site.

Work has also started in the customer service area located on the ground floor of the Nambour administration building.

In the coming weeks, Hutchinson Builders will carry out demolition and renovation, marking the start of an exciting new chapter for the Fred Murray Building.

To minimise disruption, demolition work and other noisy tasks will be scheduled outside of working hours. Council Customer Contact in Nambour will remain open throughout the construction period.

For more information visit www.sunshine-coast.qld.gov.au and search "Nambour Centre Activation Project".

Nambour Showgrounds improvements

Continuing our ongoing work to improve the Nambour Showgrounds, we have completed the electrical and lighting upgrade for Jim Carolan Pavilion.

With 11 new LED lights throughout the pavilion, it's now ready and up to Australian standards for many future events for our community to enjoy.

The showgrounds are packed with events, with the Sunshine Coast Caravan and Outdoor Expo a huge success over the weekend, the Monster Trucks Tour of Destruction this Saturday, August 24 and coming up the State Emergency Services Expo on August 31.

Kerb and channel for Elder Street, Nambour

We are considering improvements to Elder Street, investigating design solutions for installing a new kerb and channel.

This will continue our work to improve and enhance this part of Nambour and Petrie Creek.



Overall winners with two wins +33 was the team of Faye Ford, Ellie Josephsen, Rita Hedges and Brenda Muntz. They are pictured with Bendigo Bank representatives Hayley Saunders and Jill Kuramoto and Fiesta organiser Pam Cranney.

Woombye Bowls Club hosts successful Fiesta Fours

THE annual Fiesta Fours event at Woombye Bowls Club recently was a very successful day with 96 bowlers from all over the Coast participating.

"We received many favourable comments from visiting bowlers about our great club, especially our well-groomed greens, plentiful food and hospitality," said club spokesperson Pam Cranney.

"Many thanks to our local Woombye businesses who supported us with donations of prizemoney and goods."

Sponsors included: Woombye's Bendigo Bank, our major sponsor; Century 21; Rural and Plumbing Supplies and 4CP Printing.

Overall winners with two wins +33 was the team of Faye Ford, Ellie Josephsen, Rita Hedges and Brenda Muntz— pictured with Bendigo Bank reps. Hayley Saunders and Jill Kuramoto, and Fiesta organiser Pam Cranney.

Runners-up with 2 wins +29 were Linda Milne, Jane Mantle, Jan Sullivan and Angela Johnstone.

Hopefully, many will return for future events like our upcoming monthly LEGENDS afternoon on Sunday 25 August where we have good prizemoney and Treats for Touchers.

We are always looking for new bowlers and have coaching each Friday from 10am, or other times by arrangement; and Social Bowls Wednesday mornings from 9-11am, followed by morning tea. Phone the club after 10am on 5294 5245 for more details.



Trainer Kevin Brown and gym owner Wendy Versluis gear up for the upcoming LiFT X charity fitness event to raise vital funds for Inclusive Kids.

LiFT gym's charity event champions Inclusive Kids

by Tanya Outridge

ON the 31st of this month, LiFT Nambour is running a charity event in support of Inclusive Kids on the Sunshine Coast.

"The event is called LiFT X and sees participants battle it out head to head in a series of specially designed fitness events," said LiFT Nambour owner, Wendy Versluis.

This will be LiFT Nambour's third time running the event and Wendy expected it to be bigger and better than before with the goal being to raise over \$6000 for Inclusive Kids. "We have partnered with this charity for the past few years. We love the amazing work they do for the kids in our community and that every dollar raised goes directly to the kids," she said.

"Unfortunately, many children and young people face financial difficulties, which deprive them of fully experiencing the opportunities available in their communities."

Inclusive Kids raises funds for children who lack the necessary financial resources to fully and actively participate, feel a sense of belonging, and be included in their respective communities.

"We are looking for local businesses to get involved and be part of the event, and there are

a few ways for your business to support this fundraiser," Wendy said.

You can sponsor one of the rounds (strength, endurance, conditioning), with a minimum donation of \$100 dollars. You can provide a prize for one of the 6 event finalists, or you can provide small prizes for all the participants (around 20 members will be competing).

"In return your business will feature on our socials, and there will be shout-outs for your business during the event. We will also display any promotional material you supply.

"And of course, we invite you to come along and get amongst it on the day."

"The previous events have been fantastic for raising funds and for making our growing membership community aware of our incredible business sponsors. It's a real win-win."

Wendy said the event was not limited to members and encouraged the local Nambour community to come down to watch the competition.

"There will be raffle tickets sold for prizes to be won on the morning and there will also be second hand clothing sold for \$2-\$5 with all money going to Inclusive Kids."

To support the cause phone 0436 121 798 or nambour@liftstrengthandconditioning.com.au.

Explore plant oddities at Woombye workshop with local expert

EVER wondered about the strange bumps, twists, and growths that appear on trees and plants? Local botanical author and naturalist Joan Heavey will be demystifying these curious phenomena in her upcoming workshop titled Galls, Burls and Other Plant Oddities. The event will be held at Florabunda Bushcare Nursery on Saturday, September 7th, 2024, from 9am to 10.30am, followed by a relaxing morning tea.

During the workshop, attendees will gain insight into the world of plant deformities. Joan will delve into the fascinating processes that create galls—unusual growths caused by insects on leaves, stems, and flower buds—and burls, which are knotted features often found on tree trunks as a result of injury or infection. Joan's in-depth knowledge will illuminate these natural marvels, helping participants understand the often-overlooked peculiarities of plant life.

Whether you're a seasoned gardener, a nature enthusiast, or simply curious about the environment, this workshop will offer something for everyone. Joan Heavey's passion for



the natural world promises to make the session both informative and engaging.

The event is free for members of the Petrie Creek Catchment Care Group, and non-members are welcome to attend for a \$5 donation. Morning tea will be provided, offering a chance to mingle and discuss all things plants.

To reserve your spot, please RSVP by September 5th by emailing florabundabushcare@bigpond.com or by calling Florabunda Bushcare Nursery on 0475 581 890. Everyone is welcome, so come along and immerse yourself in the fascinating world of plant oddities!

Wild about flowers

THE 2024 Sunshine Coast Wildflower Festival is an annual, spring event that celebrates the Coast's native wildflowers. Running from Saturday, August 17, until Sunday, September 1, Division 5 offerings include: Life as a Botanical Artist, Mary Cairncross Scenic Reserve; Making a Microforest, Maroochy Botanic Garden; Wildflower Botany walk, Mapleton National Park. See Council's website and search Wildflower Festival for more details.

Street Up launch

DIV 10 Councillor David Law was pleased to have attended the Street Up launch in Nambour on August 6 during Homelessness Week.

Under the program Council is working with the Nambour Community Centre and people in our community who have experienced homelessness to help transform how our community understands and addresses homelessness. Visit streetup.com.au to get involved with Street Up.

Everything you need to promote your business for a whole year!



Now taking bookings for 2025 edition

- **Editorial-based** annual magazine featuring local businesses via compelling stories & attractive pictures.
- **15,000 printed copies** + Gazette website, NambourDirectory.com.au, Facebook Post & email blast exposure.
- Professional Services, Real Estate, Trades, Medical, Food & Drink, Retail, Education & more.
- Prices from just \$400*^{gst}

Scan the Code for details

or email Tanya at tanya@sunshinevalleygazette.com.au



Secrets on the Lake:

Complete wedding experience, stunning lakeside setting

Business Writeup by Cameron Outridge

NESTLED in the heart of a temperate rain-forest by the tranquil waters of Lake Baroon, Montville's Secrets on the Lake offers couples a unique and seamless wedding experience.

From luxurious treehouse accommodations to lakeside ceremonies and intimate receptions, Secrets on the Lake combines natural beauty with tailored service, making it an ideal destination for a memorable wedding day.

Couples can start their celebration by checking into "The Nest," a large, secluded treehouse that sleeps up to six guests. This space provides ample room for the bridal party to prepare, with easy access for hairdressers, makeup artists, florists and photographers.

"The Nest allows for a relaxed, stress-free lead-up to the big day, with plenty of space for the bridal party to get ready and a peaceful environment to enjoy the moments before the ceremony," said Secrets owner Aldy Johnston.

The venue offers flexibility for ceremonies, which are held in the picturesque gardens that overlook the lake and feature a unique jetty. Couples can select their favourite spot in the garden based on the number of guests, with the stunning natural setting often requiring little to no additional decoration. "The gardens and lake provide such a beautiful backdrop that many couples opt for minimal decoration," Aldy explained. "The choice is entirely yours, whether you want to keep it simple or go all out with decorations."

After the ceremony, guests are treated to a celebratory toast with canapés and can enjoy lawn games while the photographer captures the happy couple against the backdrop of the jetty, gardens, and the expansive lake. The scenic location offers a variety of photo opportunities, ensuring couples can create stunning visual memories of their day.

For the reception, Secrets on the Lake offers

several options to suit different group sizes and preferences. Couples can choose from the Lake-house, the restaurant, or The Hideaway for smaller, more intimate gatherings. Evening receptions in the restaurant allow for a romantic atmosphere, with the option for couples to decorate the venue to match their taste. "We pride ourselves on offering flexibility," said Aldy.

"Whether couples want an intimate day celebration or a full evening reception, we have spaces that can be customised to suit their desires."

'Ultimate Romance' or 'Escape' Packages

After the festivities, the newlyweds can retreat to their own private treehouse for a honeymoon surrounded by nature. Couples can enhance their stay with one of Secrets on the Lake's special packages, such as the Ultimate Romance or the Escape Package, or even design their own from a selection of indulgent add-ons.

In addition to the exceptional wedding facilities, Secrets on the Lake offers a dedicated team to ensure everything runs smoothly. Meals for the bridal party can be tailored to fit the flow of the day, from breakfast in the restaurant to lunch platters delivered directly to The Nest. "We understand the excitement of the day can sometimes mean meals are overlooked," Aldy said. "We make sure the



The scenic location offers a variety of photo opportunities



bridal party is well-fed and relaxed before the ceremony, so they can focus on enjoying their special day."

Secrets on the Lake provides a one-stop destination for weddings, allowing couples to experience the magic of their special day without the stress of managing multiple locations and services.

From the pre-wedding preparations to the final moments of the reception, Secrets offers an all-inclusive, personalised experience in a breathtaking setting. Go to www.secretsonthelake.com.au/weddings/ for more information.

Get in early and book a table for this Father's Day - 1st September 2024



Whether you indulge and stay in our luxury treehouse accommodation to rejuvenate amongst the rainforest or take a day trip and dine on the deck in our award-winning restaurant, you're guaranteed an unforgettable experience.

Stay
in a luxury
treehouse!



Call our team for special mid week rates!

Visit our website

www.secretsonthelake.com.au or Call 07 5478 5888 or Email info@secretsonthelake.com.au

Say
"I DO"



Intimate Elopements
to Grand Affairs

Enquire

with our Wedding Coordinator at events@secretsonthelake.com.au

Dine
in our Café
& Restaurant



Overlooking Lake Baroon

Tues - Sun : 8am - 4pm
Breakfast : 8am - 10:30am
Lunch : 11am - 2:30pm
Coffee & Cake all day!

Enjoy
our
Spring Menu



We cater for groups
of all sizes & love
special celebrations!

Avoid disappointment and prebook your table via OpenTable or email for group bookings dining@secretsonthelake.com.au





Sundale hosts conference on aged care innovation and standards

SOUTH-EAST Queensland's aged care leaders have descended on the Sunshine Coast to discuss and debate the future of aged care in Queensland.

The Sundale Conference, organised and hosted by Sundale, based on the Sunshine Coast, allowed industry leaders to discuss the opportunities and challenges facing the sector.

The two-day event covered the new Aged Care Quality Standards and explored topical subjects such as palliative care, trauma informed care, falls prevention and technological innovations in aged care.

Sundale CEO, Cameron Taylor, said the Sundale Conference followed the resounding success of last year's Palliative Care Conference, the first of its type on the Sunshine Coast.

"For more than six decades, Sundale has been synonymous with exceptional care for seniors throughout the Sunshine Coast region," Mr Taylor said.

"We're committed to driving innovation and excellence in aged care, and this conference is



an extension of that."

Representatives from multiple Sunshine Coast based aged care providers attended the conference, which included presentations from The Dementia Centre's, Yvonne Feeley, a Clinical Dietician focussed on the aged care population and Dr Diane Corser, a Clinical Psychologist who specialises in senior trauma informed care.

"It is imperative all aged care professionals, nurses and carers are up to date with industry developments, so they are best placed to care for the region's aging population," Mr Taylor said.

"We have heard from some of Queensland's best aged care specialists, who have delivered some fantastic insights to all attendees. This event was nothing short of fantastic."

Three things I love about the AIP diet

by Linda Goggan,
Sacred Body Montville www.SacredBody.com.au



YOU may be wondering "What is the AIP diet?"

It is the Auto Immune Protocol Diet or otherwise known as an elimination diet. It is very similar to the popular Paleo diet however it has more restrictions.

The idea is to eliminate all foods that are known or suspected to cause inflammation and digestive issues of the gut. It is most suitable for people that have auto immune conditions, those diagnosed with digestive conditions such as Small Intestinal

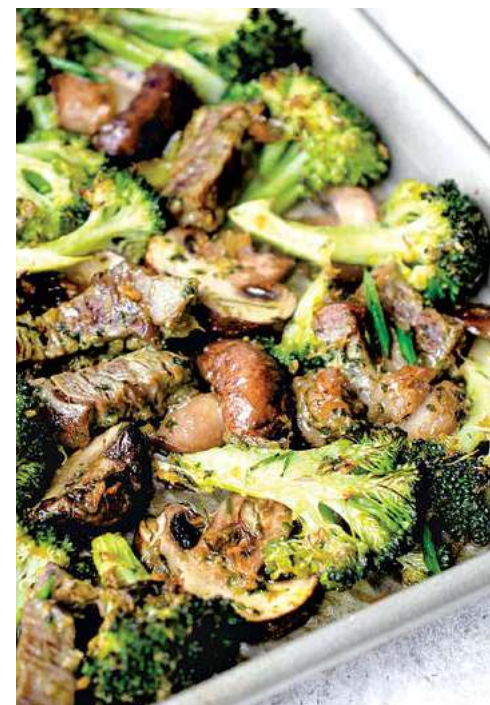
Bacterial Over Growth (SIBO) or leaky gut. The focus is to eat nutrient dense foods such as grassed meats, fresh seafood, vegetables and fruits but then eliminating grains, dairy, legumes, nuts, seeds, eggs, vegetables from the nightshade family, refined sugar, coffee, alcohol and processed foods.

You may be thinking what does that leave to eat? How on

earth can anyone enjoy eating this way? Well, these are the 3 things I love about the AIP elimination diet.

1. Restriction is only for a short time
Depending on your health concerns the AIP diet is designed to only be short term. You can choose to do it for 30, 60 or 90 days. The idea is to set how long you will do it for and restrict the inflammatory foods for that period of time and then slowly reintroduce these foods back into your diet. This will show you what foods agree with your body and what foods don't. Chances are there will be quite a few foods that you can bring back in but the reality is there are also likely foods that you may need to cut ties with forever.

2. It's positive side effects
While the AIP diet has a primary focus on improving gut health and reducing inflamma-



tion it often has the welcomed side effect of weight loss. As someone that is trained in creating calorie control eating plans and helping others in counting calories

to achieve weight loss I have found that when on the AIP diet there is no focus on counting calories at all. Because you are eating super clean, nutrient dense foods you will find you just naturally eat less calories and cravings are reduced.

3. Simple eating
Because you are so restricted in the types of foods you can eat for this short period it makes eating very simple. You fill your fridge with amazing fresh meats and produce and that's it! No complications, and shopping is super easy too because it keeps you out of all the aisles away from the packaged and highly processed foods.

Don't fret though, like I said, this is only short term and is designed to sort of reset your digestive system so you can develop full body awareness to how your body likes to be fed.

Landsborough-Maleny Road Set for \$910,000 Resurfacing

THE Department of Transport and Main Roads (TMR) will soon begin a \$910,000 project to resurface and rehabilitate a 1.2-kilometre stretch of Landsborough-Maleny Road. The works, set to commence in late August 2024,

will extend from McCarthy Road to Obi Lane South, Maleny. Nearly 10,000 motorists travel this stretch of road daily. Motorists should prepare for potential delays, with lane closures and reduced speed limits expected during the three-week construction period. The final line marking is scheduled for October 2024. Motorists can stay updated through the QLDTraffic app or QLDTraffic.qld.gov.au.

Weed Control is the secret to regeneration

Petrie Creek BushCare News. With Norm Morwood.

IF you'd like to join Petrie Creek Bushcare for some weed control activity, making habitat for native animals, the next opportunities around Nambour are as follows:

Gulung Gung on Wednesday 28 August starting at 8 am. Parking is available in the NE part of Aldi Carpark in Howard St Nambour, and then walk down to the creek by following the rough track that skirts the north of the Aldi carpark. Alternatively walk across the new park from Quota Park off Matthew St.

Florabunda Pocket on Saturday 07 September 2024 starting at 8am. (Meet near the back Rugby oval at Woombye. Come down Laidlaw Rd and turn right through the large

wire mesh gates just before the Gymnastics Hall, and follow that road till you see us)

To join in the action, you'll need to come in "long everything" bush protective clothing including boots/shoes and a hat. All tools required will be provided. Then after a couple of hours of good exercise and satisfying achievement we'll finish with the well-deserved cuppa and as interesting a chat as you can make. Let's know you're planning to come by email to Norm or just turn up on the day.

For more info and to check starting times and dates etc of events, see the FB Page <https://www.facebook.com/PetrieCreekCatchmentCareGroupInc/> and for additional info www.sunshinecoast.qld.gov.au/bushcare or contact Norm Morwood 0409 63 99 44 or email norwmorwood@gmail.com.

Look Local Classifieds

FUNERAL NOTICE

PEARCE, Sandra Lea

Late of Brady's Fruit, Palmwoods.
Passed away at home on August 9, 2024.
Aged 60 years.
Loving wife of Colin.
Dearly loved mother and mother-in-law of Brendan, Matt and Tayla.
Loved Grandma of Hallie and Johnny.
Family and Friends are invited to attend the celebration of Sandra's Life to be held at the Gregson and Weight Chapel, 34 National Park Road Nambour on Tuesday August 27, 2024 at 11am.
The family would love attendees to wear bright colours.

YOGA

HATHA YOGA/PILATES RELAXATION

Hatha Yoga Pilates is held at the Woombye Hall: Sat 9am & Wed 9.30am. Beginners & Seniors welcome. Cost \$10. Call Christine: 5441 6285 (Cert. in Pilates matwork; Dip. IYTA: Yoga Instructor; USC Sport & Exercise minor: Ex. Prescrip. for Health & Rehab.)

AGM

Montville Chamber of Commerce Inc.

NOTICE OF ANNUAL GENERAL MEETING

Wednesday, 18th September, 2024
5pm

At: Flaxton Gardens

All positions on the Executive Committee are open.

To receive a Nomination form please email info@montvillecommerce.com.au

Nominations close 5pm 4 September 2024

HOME FOR SALE

NEW HOME FOR SALE

A new home with a legal structural warranty of 6 and half years. Good size living, dining, kitchen, air conditioned. Fans in bedrooms with two balconies, front and rear. Large garden, colour-bond shed. Two-car accommodation and a very large, beautiful garden. The home is situated in the Sunshine Coast hinterland, Over 50s residential Palmwoods tropical village. Pets are accepted but must be on leash. Price by negotiation.
For inquiry please call 0421 005 121.
How nice would it be to retire in a beautiful tropical paradise?

YOUR LOCAL PET & RURAL STORE

WE HAVE EVERYTHING YOU NEED, RIGHT HERE!

- PET FOOD
- ANIMAL HEALTH PRODUCTS
- STOCK FEED
- BIRD SEED

- RURAL SUPPLIES
- GARDEN PRODUCTS
- HERBICIDES / INSECTICIDES
- FERTILISER
- RURAL / ELECTRIC FENCING

NAMBOUR PRODUCE AGENCY

60 NATIONAL PARK ROAD, NAMBOUR
P 07 5441 5955

Embrace the season with homegrown coleslaw and pickled veggies

Hinterland Homesteading with Racheal Pascoe

WHAT a fabulous time of year it is! I am harvesting little handfuls of things each day to have with dinner. It is so good to sit down to tea and impress everyone with the fact the snow peas, cabbage and squash are all from the garden. I actually say 'these snow peas are very local' and they all get it. Absolutely none of the sugar snap peas made it to the kitchen, they were all eaten in the garden by everyone! I don't mind at all. This year though I planted quite a few sugar loaf cabbage seeds, grew them up to seedlings and planted them out and they all grew beautifully! So now I have an abundance of cabbage! Yikes.

Luckily my family just love fresh coleslaw. Have you thought about making your own? It is so much better than the store bought coleslaw.

Fresh Coleslaw

Buy a lovely fresh cabbage from the fruit shop (I like Fruity Life in Howard St, Nambour the best), or even better if you have grown one yourself in the garden. Cut it in half and then slice one half very finely and put into a bowl. Add a grated carrot and some finely diced red onion. Mix through a nice lot of mayonnaise and it is ready to serve. Now it will taste so good today, but tomorrow it will taste even better as the flavours meld together. You can also add some finely diced capsicum, snow peas etc. Coleslaw is really a cabbage salad, so you can get creative and make it how you want. It is a terrific side dish to have with any sort of meat. Coleslaw will last a few days in the fridge, but it is easy to make, so you can prepare fresh batches in a flash.

Another really tasty way to enjoy cabbage is by making sauerkraut. (That might be an

entire column on its' own!)

In a pickle

Another terrific way to store vegetables for later on is to pickle them. As with a lot of things we grow in the garden, when it is in season it all becomes ripe and ready to pick at the same time, so pickling is a fabulous solution for a lot of vegetables... onions, carrot, capsicum, cucumber, zucchini, asparagus, radish, squash, turnips, in fact just about any vegetable can be pickled!

We just love golden beetroot and it is delicious pickled to enjoy as we fancy. Quick pickling is so easy and you can get creative with the vinegars and spices you use. Experiment and see what flavours your family like. Consider garlic, red pepper flakes, ginger, peppercorns, fresh dill, thyme etc as flavouring agents for your brine. Fresh herbs, dried herbs, whole spices and ground spices are all great to use. Start out slowly, seeing what flavours you like.

Pickling is not a difficult process, it just takes a little bit of time to get organised and it is best done with super fresh vegetables. You will need clean, dry jars to store the vegetables in.

Once you have harvested your vegetables, wash/dry and then slice them or cut them all in pieces which about the same size and layer them in the jars. Put in your spices etc into each jar.



You don't need to boil the brine. The idea is to dissolve the sugar and salt, this can be done in the liquid by simply stirring. Sugar is used to balance the tartness of the vinegar. A classic ratio is 100% vinegar, 50% water, 25% sugar and 12.5% salt. You can easily scale this recipe up to any amount you require.

Pour your pickling mix in and seal the jars. Store them in a cool, dark place. Pickled veggies will last 3-4 weeks in the fridge for you to enjoy and much longer if they are unopened. Let your vegetables soak in the brine for a few days before enjoying them. Okay, try to make it to 48 hours before opening and sampling!

You can blanch vegetables in boiling water for 2-3 minutes and then shock them in an ice bath to preserve their colour before putting them in the jars. This is nice if you are planning on giving jars of pickled goodies away as gifts.

Have the jar of pickled goodies on the table at dinner for people to enjoy! Happy pickling!

Aussies paying high price for electricity

from Ted O'Brien
Federal Member for Fairfax
ted.obrien.mp@aph.gov.au



New data shows that 49 per cent of Australians are fearful of turning on their heater due to the increased cost, which means half of Australians—whether they be seniors, whether they be people with disabilities, whether they be veterans or whether they be hardworking families—are going cold because this government has lost control of the energy system.

Australians are now paying among the highest prices in the world for electricity. Every single week since this government came to power, an extra 600 families have gone on hardship arrangements with their energy retailer because they can't afford their power bills.



Ted O'Brien, right, chats with Pastor Dale Dowler and Senator Hume at the Cost of Living Forum.

Recently I brought together community organisations yesterday in a forum to discuss cost-of-living with Senator Jane Hume who chaired an inquiry into the issue. She has heard first-hand many harrowing accounts of the impact families across Australia are feeling. The swapping of ideas between attendees on practical measures to assist those in our community most in need made this forum really valuable.

Read more at www.finder.com.au/news/heating-hardship-winter-2024 and watch at www.youtube.com/watch?v=-ZN31kOhx6Y.

If I or my office can be of assistance, please don't hesitate to reach out on (07) 5479 2800 or at ted.obrien.mp@aph.gov.au.

I've never felt threatened or unsafe in Nambour

Regarding Robyn Deane's letter (*Gazette*, August 7, 'Why does Nambour get such a bad rap from certain politicians?'): We moved to Nambour three-and-a-half years ago from a small town in Western Queensland. Nambour was not on our radar to purchase at the time, but we rented there until we found the right property ... which just happened to be in Burnside.

We absolutely love living here, beaches, Hinterland etc are so close, great shopping, coffee shops/cafes and the people here are so friendly. We've made new friends and have wonderful neighbours.

Not once have I ever felt threatened or unsafe. All towns everywhere have some "bad" elements, but in the majority of cases the "good" far outweighs the "bad". Please don't let the grandstanding politicians deter you, they have one agenda, to get elected. Hope to see you in Nambour soon!

– Ellen Smith, Burnside

LNP doesn't care, judging by their policies

I note that your articles about the cost-of-living crisis included only opposition LNP politicians.

I think it's pretty rich of the LNP to get up and pretend to care about the people at the bottom of society's ladder, when I can't recall them ever voting to increase the minimum wage. In fact, in 2019, former finance minister Mathias Cormann said low wage growth was "a deliberate design feature of our economic architecture".

The LNP is the party that planned for the Stage 3 Tax Cuts to go only to high income earners, delivering most of the benefit to those on high incomes. So, nothing at all for people earning \$45,000, \$875 for people earning \$80,000 but a massive \$9,075 for people earning \$200,000.

They loudly opposed the restructuring of the Stage 3 cuts as implemented by the current government, to spread the tax cuts across all income levels.

There is a cost-of-living crisis, and it equates directly to an inequality crisis. The LNP has

Letters to the Editor

The Gazette welcomes letters to the editor. Please keep your letters brief (under 300 words). All things being equal, preference is given to topical, shorter letters on local matters of widespread interest. Very brief letters are particularly appreciated and well-read.

always favoured "corporate socialism" over actual social policies.

Massive, no-strings-attached government payouts went to the biggest corporations during the pandemic, without the then government securing any equity in those companies on behalf of the people of Australia.

Harvey Norman took all that money and posted record profits, but was not required to return any of it. QANTAS took all that money, sacked staff anyway, and rewarded the taxpayer's generosity by selling us "ghost flights".

Private schools build baronial halls and Olympic sports facilities with public money, while State schools starve, robbing the nation of the potential of some of its brightest minds.

The LNP's Robodebt punished those at the very bottom rung of society by assuming everyone on unemployment benefits was a crook just waiting to be found out. Meanwhile, massive corporate rorts in education and training, NDIS, environmental funding, asylum seeker detention facilities, etc, were allowed to go unchecked.

For those who have money, owning property and charging others to use it is an investment strategy that has tax perks, but does not increase the nation's productivity.

I'm disappointed that Pastor Dowler, who supports the sector of society most cruelly treated by the LNP, should allow himself and his organisation to be used by them as their champions.

– Joy Hinckley, Coes Creek

A bit of editorial balance please

Re page 3 of the August 7 Gazette, there are four articles about the depth of community struggles re money but, just below these, there

is a large ad for a luxe high tea ... \$99 pp ... champagne, seafood, gourmet delights etc.

Coupled with the overflowing cafes and restaurants in the district, surges in on-line gambling, multitudes of expensive cars and SUV's, for at least 50% of people in our area there's absolutely no cost of living crisis.

Many people are obviously swimming in money.

It would be great if your editorial team could be a bit more balanced about the real state of division in our community.

At the moment it looks more like a biased political ad for the LNP and conservative churches.

A greater focus on the quiet good being done by certain groups and churches would be far preferable to this avalanche of endless woe.

– Graham Langdon, Maleny

There's another side to the Maleny precinct issue

Steven Lang of Maleny and a former member of the Maleny Precinct Advisory Group deserves a big thankyou for his timely letter highlighting a possible option and a solution for the proposed Maleny District Park (*Gazette Letters*, August 7).

Many residents & ratepayers agree with everything he says in his brilliant letter.

I encourage you, the editor of this paper, to consider giving Mr Lang & other Maleny residents, like Frances Harper, and perhaps Marek & Libby Malter a similar size article in your wonderful local publication to share their visions & thoughts on this important matter, like you did for that resident trio page 6 of the very same edition.

This would be a fair and appropriate thing to do because the trio's version of a vision regarding this District Park – does neither represent me nor hundreds of other residents & ratepayers.

However, locals like Mr Lang, Mrs Harper and the Malters – all of whom have been involved with various long-running community groups which have various involvements with the land affected by this proposal, do represent a far wider cross section of residents, ratepayers & other stakeholders than this trio ever will.

– Gaby Luft, Maleny

Call for better maintenance of median strips and roadsides



Attention Councillor Division 5, State Member for Nicklin:

A number of years ago, I wrote to local and state politicians regarding the unkept median strip on Nambour Connection Road. The response from the local Main Roads Manager was that 18 mows a year were allocated and controlled by the contractor.

My question is: do the handlers of state money check these areas? If this was Maroochydore Road or a similar location, it would be managed more effectively. Therefore, I request a resolution for ongoing management of the median strip.

My second concern is the safety and visibility of the entry to Woombye and the ambience of the route from Woombye to Palmwoods along Pine Grove Road. The Council contractor informed me this morning that he can only mow where instructed by the Council. Consequently, the overgrown side on the left going up Pine Grove Road past the speed cameras, including the Armco fence and grass in that area, is neglected.

In effect, Main Roads has accountability but lacks supervision over how well the contractor manages grass growth in the median strip over 12 months. Additionally, there is mismanagement of the overgrowth at the entrance to Blackall Street.

The Council needs to address the area along Pine Grove on the left-hand side. Surely, commonsense and a focus on tidiness would be the way forward. Our parks are well maintained, but certain areas are neglected.

– Howard Riach, Woombye

Live Local Real Estate

Your dream home could be just around the corner. We bring you the latest news & Agent's Choice listings.



The luxurious living air brings the outdoors in, with multi-stacker doors that open to the patio.

Resort living meets luxury in meticulous Burnside home

AGENT'S CHOICE: 11 Swift Lane, Burnside.
\$1,049,000.

THIS immaculate one owner home combines opulence and luxury in resort style living.

The large galley style kitchen has enormous bench space and a full length breakfast bar. The cooking station features a gas cooktop and canopy style range hood, stone bench tops and a butler's pantry. The living area has been styled for luxury with feature light fittings, floor to ceiling window furnishings and huge multi-stacker doors which open out to the patio area.

A huge undercover patio area meets the pool and timber deck, making this a wonderful home for outdoor living and entertaining.

The family sized media room and third living area/ home office provide space and options

for a variety of situations.

The four generous bedrooms feature ceiling fans, built in robes, venetian blinds and luxurious carpets. The master suite has large windows which look out onto the gardens, walk through robes and an ensuite with dual vanity and shower heads.

For year long comfort, the home has ducted air conditioning and heating, and solar power and battery keep the running costs at bay.

Set on a 814m² block, this home has a oversized double garage, garden shed, is fully fenced and has an extensive surveillance camera system.

It is just minutes from Burnside schools, St John's College, and the Nambour CBD.

• To arrange an inspection of this immaculate property, contact Jason Stock on 0499 562 675.



The spacious, light filled kitchen opens to the living area.

Quiet and convenient town living in Maleny

AGENT'S CHOICE: 24 Fig Street, Maleny.
\$1,120,000

THIS recently remodelled, contemporary home is just a short walk from the main street of Maleny.

Tucked away in a quiet cul-de-sac, this meticulous property is currently running as an Airbnb. It is a very versatile property for many different lifestyles.

The spacious kitchen with Belfast sink is open to the light filled living area, which has a Canadian fire, air conditioning and large windows which look out to the leafy yard.

There is a generous main bathroom plus an en suite to the main bedroom, and the good-sized bedrooms all have an appealing leafy outlook. All of the bedrooms have air



conditioning.

A large covered deck provides plenty of additional living space and there is accommodation for cars and lockable storage space under the house.

The 933m² private landscaped yard has established trees and all town services. There is side access to the yard and plenty of room for a boat, caravan or granny flat.

• Contact Exclusive Agent Jess Luthje on 0438 616 064 to arrange an inspection today.



Positioned in a prime location, Lowanna Beach Resort ensures easy access to all areas of the Sunshine Coast.

Beach and coastal lifestyle in central Buddina location

AGENT'S CHOICE: Lowanna Beach Resort. New apartments selling from \$1,240,000.

LOCATED beachside within the vibrant Kawana precinct of Buddina, Lowanna Beach Resort offers unparalleled access to all essential amenities. This exceptional lifestyle opportunity invites you to join a unique community that seamlessly blends urban convenience with coastal charm.

Just a short stroll from the beach, local shopping center, and entertainment options, the resort boasts spacious apartments with large balconies, all finished to the highest standards.

Residents can enjoy exclusive access to a pool, clubhouse, and a pet-friendly environment. The secure complex is perfect for those seeking a "lock up and leave" lifestyle.

Apartment features include spacious bedrooms, high quality stone surfaces and European appliances throughout, expansive open plan living areas, an entertainers balcony and complex security and optional storage.

Discover modern living, an enriching lifestyle, and a welcoming community at Lowanna Beach Resort.

• Contact selling agent David Taylor today on 0428 636 880 to find out more.



French doors connect the living area to the verandah.

Endless charm and privacy at 42A Nadi Lane, North Maleny

AGENT'S CHOICE: 42A Nadi Lane, Maleny.
\$1,120,000

THIS recently renovated highset Queenslander at 42A Nadi Lane offers a stylish and peaceful retreat on a private acre of land in North Maleny. With verandahs wrapping around three sides of the house and connected via French doors, the home provides seamless indoor-outdoor living. The lush garden, shaded by mature trees, offers a perfect space for children to explore and play.



The property includes three bedrooms, two bathrooms, a wood-burning fireplace, and polished floorboards throughout.

Additional features include ducted air conditioning, a triple carport with 3-phase power, rainwater tanks, a working bore, and an under-house workshop.

• Contact Rodney Millett, Maleny & Hinterland Realty, for a private inspection.

MALENY & HINTERLAND REAL ESTATE

SALES | PROPERTY MANAGEMENT | COMMERCIAL



84 Tallowood Street **MALENY**

4 bedrooms, 2 bathrooms, 2 car spaces

Elevated for cool summers with North-East breezes, an enviable location, and immaculately maintained rendered brick and tile home.

- Convenient location; just a 3-minute drive to the bustling township of Maleny
- Easy walk or bike ride to Maleny Primary and High Schools
- Fully landscaped, 2118m² corner block with great privacy
- Raised veggie beds, fruit trees and a mini Hot House for seed raising
- Covered outdoor entertaining with wood fire

The grounds are thoughtfully landscaped, with walkways all around the house, securely fenced house yard and convenient terraced levels for pets and children.

FOR SALE
Price Guide \$1,235,000

INSPECT
By Appointment Only

Jess Luthje
0438 616 064
jess@malenyrealestate.com



997 Aherns Road **CONONDALE**

3 bedrooms, 2 bathrooms, 3 car spaces

Located a stone's throw away from the Mary River crossing, this 3-bedroom home is positioned on an elevated 1-hectare block of land and offers an idyllic country lifestyle.

- Quiet location with rural views
- Gorgeous, covered verandah boasting valley views
- Wood burning fireplace
- Large triple bay shed
- Stables/animal yards and a dam
- Fencing in place separating the house yard and adjoining paddocks

Create your new sustainable life here or simply escape the hustle and bustle of city life; contact exclusive agent Rodney Millett today.

FOR SALE
Contact Agent

INSPECT
By Appointment Only

Rodney Millett
0477 702 073
rodney@malenyrealestate.com



536 Mountain View Road **MALENY**

4 bedrooms, 4 bathrooms, 2 car spaces

Superbly positioned in the Blue-Ribbon area of Maleny, Sandford House sits proudly on a level, fully landscaped 4237m² parcel of land. Glasshouse Mountain glimpses and delightful garden views abound.

- 12-foot ceilings, Deco features, timber floors, French doors and feature glass
- Private, self-contained 2 storey cottage nestled on the block
- Three separate deck areas for all-weather outdoor entertaining
- Recently remodelled kitchen with new appliances, generous storage and replica stone benchtops
- Solar back to grid, solar hot water and your own rainwater supply

Located in one of Maleny's most picturesque areas with the convenience of an Eastside location just four minutes' drive from the thriving centre of town.

FOR SALE
\$1,850,000

INSPECT
By Appointment Only

Jess Luthje
0438 616 064
jess@malenyrealestate.com



45 Obi Vale **NORTH MALENY**

3 bedrooms, 2 bathrooms, 2 car spaces

Nestled in the highly coveted locale of North Maleny, this gem of a home is on over an acre of land and is ready for its new owners.

- Lowset, very solid North Maleny gem
- Glorious sunroom looking over cottage gardens
- Studio, office, or mudroom space just off the garage entry-the options are endless
- Double remote garage, large workshop space and internal entry
- Covered, entertaining area with connection to the kitchen via a servery
- High, A-frame ceiling in the living area

Bring your interior and landscape design plans to this blank canvas and reap the rewards for many years to come.

FOR SALE
Contact Agent

INSPECT
By Appointment Only

Rodney Millett
0477 702 073
rodney@malenyrealestate.com



24 Fig Street **MALENY**

3 bedrooms, 2 bathrooms, 1 car space

You will love living in this recently remodelled, contemporary home just a short walk from the bustling main street of Maleny; be quick, this level of presentation is rare!

- Light-filled living area with Canadian fire and air conditioning
- Large, covered deck: a great area for family and friends
- Car accommodation, plus under house lockable storage
- Large, private landscaped yard with established trees
- 933m² block with all town services
- Side access, room for a boat, caravan or granny flat

Currently running as an Airbnb; a very versatile property for many different lifestyles.

FOR SALE
\$1,120,000

INSPECT
By Appointment Only

Jess Luthje
0438 616 064
jess@malenyrealestate.com



42A Nadi Lane **NORTH MALENY**

3 bedrooms, 2 bathrooms, 3 car spaces

Boasting immediate warmth and charm as you enter this very stylish and recently renovated home, here is the opportunity to secure a gorgeous parcel of land and very private home.

- Recently renovated highset Queenslander on an acre parcel of land
- Wood-burning fireplace
- Ducted air conditioning
- Polished floorboards throughout
- Over-sized triple carport with 3 phase power and room for the cars, caravan, trailer and boat
- Under house workshop ready for your next project

This much-loved home will deliver endless style, warmth and charm for many years to come.

FOR SALE
Contact Agent

INSPECT
By Appointment Only

Rodney Millett
0477 702 073
rodney@malenyrealestate.com

5494 3022

malenyrealestate.com

Maleny & Hinterland Real Estate

malenyandhinterlandrealestate

PROUDLY A FAMILY OWNED AND OPERATED AGENCY IN THE HEART OF MALENY

Trades & Services

Local people look local first. Cast a wide net with an advertisement and write-up in the Gazette. A massive 10,000 copies delivered every fortnight.

WATER SERVICES

HW WS SEPTIC PUMP OUTS
 Hinterland Waste Water Services
 Peter
 0428 723 082
 hwws@bigpond.com

PRESSURE CLEANING

ADAM'S PRESSURE WASHING
 SOLAR PANEL CLEANING
 GUTTERS
 HOUSEWASH
 DRIVEWAYS AND PATHS
 EXTERNAL WINDOW CLEANING
0437 732 628
 FULLY INSURED AND SAFETY TRAINED

AUTO & MECHANICAL

AUTO ELECTRICS QLD AEO MECHANICAL
 5442 2278
 * AIR CONDITIONING
 * MECHANICAL REPAIRS
 * AUTO ELECTRICS
 * LOG BOOK SERVICING
07 5442 2278
 227 Nambour Connection Rd
 WOOMBYE
 autoelectricssqld.com.au

RUBBISH REMOVAL

2-GO Clear-Space !!
RUBBISH (ANYTHING) REMOVAL
 Fridges, Beds, Mattresses, Lounges, including clutter
FREE QUOTES
 Small Clutter or Full House Clearances
The Clear-Choice !!
CALL NOW 0477 772 138

TREE SERVICES

Hollows For Wildlife
 Habitat Creation
 Pruning
 Tree & Palm Removals
 Hedging
 Qualified & Insured • 10% Seniors Discount
 info@hollowsforwildlife.com

BUILDER

local builder FOR ALL YOUR BUILDING NEEDS
 Local Family Owned Building Company
 30 Years Industry Experience
 You deal directly with the owners and we ensure our customer's needs and expectations are met and exceeded on every project.
0448 866 907
 www.ibuildqueensland.com.au
 QBCC: 1304991 - Master Builders: 68500
IBUILD QUEENSLAND
 SEEING THE FUTURE IN BUILDING

ELECTRICIAN

ACW ELECTRICAL
 Lc No. 8020
SMALL JOB SPECIALIST
 Over 30 years experience
Quality Workmanship on Domestic Installations & Repairs
 mobile **0427 170235**

AUTO SERVICES

CARAVANS WE BUY, SELL AND CONSIGN
P: 0408 758 688

SEPTIC CLEANING

Sutton's CLEANING SERVICE
 • SEPTIC SYSTEM *Locally Owned*
 • TREATMENT PLANTS *& Operated Since 1980*
 • GREASE TRAPS
 • HYDRO EXCAVATION
 • LIQUID WASTE
 • COMMERCIAL & DOMESTIC
PH 5447 6477
 www.suttonscleaning.com.au

PLUMBER

WOOMBYE PLUMBING
 30 Years Experience
RURAL PLUMBING SPECIALIST
 • RAINWATER TANKS & INSTALLATION
 • DRAINAGE
 • MAINTENANCE
 • EXCAVATOR HIRE
HAYDEN KITHER
 0490 308 785
 hayden@kitherplumbing.com
 135 OLD PALMWOODS ROAD, WEST WOOMBYE

LANDSCAPING SERVICES

WOODCHIP / FOREST MULCH
 \$25 per cubic metre + GST
 (8 cubic metres minimum delivery)
54 459921 or 0412 586 131
 We also provide complete tree services including pruning, removals & consultancy
 TREE SOLUTIONS

HOSE FITTING

SUNSHINE COAST HOSE & FITTINGS
 MOBILE HOSE SERVICE

SERVICES INCLUDE
 • 24/7 BREAKDOWN SERVICE
 • PLANNED MAINTENANCE & SHUTDOWN WORK
 • HYDRAULIC & INDUSTRIAL HOSE AND FITTINGS
 • FLUID TRANSFER, STORAGE AND METERING
 • PUMPS AND REELS
 • HYDRAULICS
 • PNEUMATICS
 • LUBRICATION
 • REFUELLING
0408 220 503 24/7 MOBILE SERVICE
 sunshinecoasthoseandfittings.com.au
 schf@outlook.com.au KUREELPA Sunshine Coast

TANK CLEANING

TANK LEAKING CLEAN REPAIR RENDER
 OVER 35 YEARS SUNSHINE COAST EXPERIENCE
 FREE QUOTES
 PENSIONERS DISCOUNT
0475 249 367

CONCRETING

CREATIV CONCRETE CO.
 Pathways | Driveways
 Pool Surrounds | Patios
 Shed Slabs | Plain Concrete
 Exposed Aggregate
0408 696 286
 E: creativconcreteco@outlook.com
 QBCC - 15237470

FLOOR SANDING

CHOICE FLOOR SANDING
 TIMBER FLOORS • STAIRS • DECKS
 OWNER OPERATOR FOR 25 YEARS
CALL PAUL
0419 716 500

SEPTIC CLEANING

Sutton's CLEANING SERVICE
 • SEPTIC SYSTEM *Locally Owned*
 • TREATMENT PLANTS *& Operated Since 1980*
 • GREASE TRAPS
 • HYDRO EXCAVATION
 • LIQUID WASTE
 • COMMERCIAL & DOMESTIC
PH 5447 6477
 www.suttonscleaning.com.au

WATER SERVICES

HW WS SEPTIC PUMP OUTS
 Hinterland Waste Water Services
 Peter
 0428 723 082
 hwws@bigpond.com

CONCRETING

CONCRETING & LANDSCAPING ALL AREAS
 • Footpaths • Driveways • Slabs • Stencil
 • Stamped • Concrete Saw Cutting
 • Exposed Aggregate • Plain • Bobcat
 • Excavator & Truck
 • Quality work at affordable rates
 • Free Quotes & Free Advice Anytime
 • Credit Cards
Ph Guy 0416 202 044
 www.concretecontrol.com.au
 QBCC Lic no. 1129605

BLINDS AWNINGS

Servicing The Sunshine Coast For Over 30 Years
INDEPENDENT BLINDS & AWNINGS
0411 872 060
 Ziptrak & Zipscreen • Blinds & Awnings
 Clear PVC Blinds • Plantation Shutters
 Security Doors & Screens
Call us today for a free measure and quote!
 www.independentblindsandawnings.com.au
 QBCC No. 1096933

ELECTRICIAN

lit Lit Electrical and Data Pty Ltd.
 ECL LIC: 87381 ABN 30644470315
DOMESTIC RURAL COMMERCIAL INDUSTRIAL MAINTENANCE
 Switchboard Upgrades | Underground Power | Renovations
 Ceiling Fans | Appliance Repairs | Smoke Alarms | New Builds
 NBN | CCTV | Phone and Data | Intercoms
0421 176 849
 www.litelectrical.com.au | admin@litelectrical.com.au



Dignified Anger: Stories for a Perilous Now

WE live in perilous times. Maybe we always have, but not on such a grand scale as now. So, what stories got us here?

Performers and musicians Jan 'Yarn' Wositzky and Penny Glass, pictured, bring their wealth of experience to this dramatic, moving and comical piece of storytelling theatre.

The stories are sprinkled with songs and music on a 5-string banjo, harmonica, flute, rhythm bones and drums. Two performances on the Sunshine Coast. The first is a House Theatre at Kari's, August 25 at 4pm: www.trybooking.com/1255225. The second is at Maleny Playhouse, Showgrounds. Saturday 31st August at 7pm: www.trybooking.com/1255210.

Jordie Lane at Eudlo Hall on August 30

DON'T miss the opportunity to see acclaimed Americana/folk artist Jordie Lane live at Eudlo Hall on Friday, August 30. Jordie will perform as part of his "Tropical Depression" Australian Album Tour, supported by Alys Pffon, a talented artist who has spent a decade honing her craft in Nashville. The evening promises poignant lyricism and captivating performances. Doors open at 6:30pm for a 7:15pm show. Tickets are available for \$25, with concessions at \$20 and youth tickets at \$10. Visit www.jordielane.com to purchase tickets.

Live album recording with Andrea Kirwin & Claire Evelyn

EXPERIENCE an exclusive live album recording at Yama-Nui Recording Studio on Saturday, September 7. Andrea Kirwin and Claire Evelyn will perform their Fijian folk/Island Soul duo show, with support from award-winning NZ duo Matt Joe Gow and Kerryn Fields. This intimate event, limited to 35 attendees, includes a post-show dinner around the fire. Tickets are \$100, with all proceeds supporting the recording, mixing, and filming of the event. Email bookings@peacerunrecords.com to reserve your spot.



Pianist back to Parklands for 'monster' recital

RUSSIAN-BORN piano maestro Konstantin Shamray is returning to Lucas Parklands in Montville on September 14 for what's touted as a 'monster' recital that includes three huge 30-minute Russian sonatas.

Shamray is now among Australia's premier classical pianists and, combined with his physical stature and strength, is regarded as one of very few who could 'pull off' such a demanding program.

"It's an incredibly difficult, long, unusual program; it's Russian music, played by a Russian monster," promoter Ian Lucas, of Lucas Parklands, said.

"If Konstantin was a car, he'd be a Hummer, if he was a plane, he'd be an A380, because the works he is playing are really big, there's no little seven-minute pieces here."

Konstantin will present the all-Russian program, highlighting three monumental Russian piano sonatas: Tchaikovsky-Piano Sonata, Scriabin-Piano Sonata No. 2, and Medtner-Piano Sonata "The Night Wind".

"He can cope with the enormously long, hard work that some of the Russian works are; they demand extraordinary technique, virtuosity and stamina to get through them. To play, say 32 minutes or 33 minutes in a single piece, it's a marathon."

Mr Lucas and his wife Lee have a long friendship with Mr Shamray, stemming from his first arrival to eventually settle in Australia.

"When I first met him in 2008, he was new to the country and we were the first family he met in Australia, which was just a pure coincidence," Mr Lucas explained.



Konstantin will present the all-Russian program, highlighting three monumental Russian piano sonatas.

"And then we grew to watch him develop his career within Australia, and now of course, we are lucky he can actually spare the time to come back up here because, if you look at his schedule of performances, he's a very busy artist."

Mr Shamray will perform at the Lucas Parklands concert hall, at Montville, in the Sunshine Coast hinterland, on Saturday, September 14 at 3pm. For tickets, please phone 0409 623 228 or 54785667 Email: lucasparklands@bigpond.com. For info go to www.lucasparklands.com.au.

Mooloolah Community Centre hosts another popular cooking workshop

THE Mooloolah Community Centre is hosting a "Cooking for 1 or 2 Persons" workshop following the success of the recent event on the same topic held my the QCWA Maleny. Scheduled for Monday, September 30 from 9.30am to 1.30pm at the Mooloolah Public Hall, this workshop will be led by the Country Kitchens Team, including Team Leader Aleks Lukovic from the State Office and Nambour North Coast Division Facilitators. Learn to prepare quick, healthy meals suitable for small households, with a focus on making meal planning easy and economical. \$15 per person. Email Vicki to reserve a spot by September 23 at secretary@mooloolahcommunitycentre.org.

Yandina Community Gardens hosts Introduction to Permaculture Workshop

YANDINA Community Gardens will hold an "Introduction to Permaculture" workshop on Saturday, August 31, from 9am to 11am at North St and Farrell St, Yandina. The workshop will explore permaculture principles, which were developed in the 1970s by Bill Mollison and David Holmgren to promote sustainable use of land and resources. Dave will cover topics such as Syntropic Agriculture, Holistic Management, and Korean Natural Farming, as well as bushfire resilience, soil regeneration, and animal management. To attend, book your ticket via events.humanitix.com. For more details, contact Lissa Evans at secretary@yandinacomcommunitygardens.com.au.

Secrets on the Lake unveils new spring menu

SECRETS on the Lake's Chef Jon Dunston has just launched an enticing new Spring menu, blending fresh seasonal delights with the restaurant's beloved classics.

Among the standout dishes are the Secrets Salad, a vibrant mix of pumpkin, rocket, sundried tomato, pickled red onion, fetta, and roasted chickpeas, all drizzled with a maple balsamic vinaigrette. For something heartier, try the Sticky Beef Ribs, slow-cooked in a sticky black vinegar caramel and served with steamed jasmine rice and a refreshing siam salad. Seafood lovers will enjoy the Fish of the Day, paired with a kipfler potato salad and tomato & herb vinaigrette. End your meal with a decadent Sticky Date Pudding, topped with salted caramel and whipped cream.

• Call 5478 5888 or visit www.diningonthedeck.com.au to reserve your table.

Celebrate Father's Day at Secrets on the Lake

MAKE this Father's Day unforgettable with a special dining experience at Secrets on the Lake on Sunday, 1st September. Whether Dad prefers a hearty Farmers Breakfast or something from the value-packed Father's Day Specials Board, Secrets has something to make his day truly special. Secrets is also running these specials on Saturday, offering flexibility for families with date restrictions.

• Bookings are essential. Call 5478 5888 or visit www.diningonthedeck.com.au for a table.



'Kim Kirkman and Friends', the concert will include old favourites and new items with Kim plus guest artists in song, harp and violin.

New St Georges in the Hills concert coming soon

LOCAL popular musician, conductor and choirmaster, Kim Kirkman, has devised a new 'surprise' program for the next St Georges-in-the-Hills concert at the church 2 Walkers Drive Maleny on Sunday September 8 at 3pm.

Titled 'Kim Kirkman and Friends', the concert will include old favourites and new items with Kim plus guest artists in song, harp and violin. Ticket cost \$25 and include refreshments after the concert. They can be purchased via humanitix.com/kim-kirkman-and-friends or at the door.

Emily Lubitz in concert on Thursday 19 September

PEACE Run Records is proud to present award winning singer/songwriter Emily Lubitz in concert on Thursday 19 September at Black Box Theatre in Nambour. Supported by Australian/Fijian singer-songwriter Andrea Kirwin and her wife Claire Evelyn on Celtic Harp this will be a true celebration of independent women in music and their songs and stories. Doors will open 5.30pm for 6.15pm show and Tickets are \$25 admission with \$20 concession (Limited seats so please book early) and \$10 youth tickets (17-13 yrs). Seeing Emily Lubitz perform is a real treat. She has an old world charm that is so disarming. Emily also has a very dry wit that will have you laughing between songs at her humorous banter.

Broadway in the Hangar: A night of music and charity

THE highly anticipated "Broadway in the Hangar" event is set to return on October 19th, 2024, at the Queensland Air Museum in Caloundra. Hosted by Cirrus Aircraft, this evening promises to be a spectacular blend of entertainment, fine dining, and philanthropy, all in support of Angel Flight.

Attendees will be treated to a stellar performance by Bruce Edwards and the Underground Opera Company, while enjoying delicious Italian cuisine prepared by Michael Berris and his team. Tickets are expected to sell fast. Visit www.trybooking.com.au/CPPI. Don't miss out on this unique opportunity to enjoy a night of Broadway magic in the historic setting of the Queensland Air Museum.

Poetry debut by local author available at Maleny

MALENY Bookshop is stocking the debut poetry collection by Sunshine Coast author and artist Max McDonald.

Titled "Please Enjoy My Poetry and Prose, Max", the book offers readers a journey through nine decades of McDonald's life, captured in verse.

Known for his evocative paintings, McDonald has turned his creative talents to poetry, blending classic bush poetry with his own humour and nostalgia.

The collection is a celebration of Australian life, accompanied by hand-drawn illustrations by the author.

Visit Maleny Bookshop to explore this unique addition to local literature.

Maleny Hospital Auxiliary hosts annual fundraiser

THE Maleny Hospital Auxiliary is hosting its annual fundraising event, "A Springtime Affair," featuring a high tea and fashion parade.

The event, celebrating 40 years of fundraising, will showcase fashion from Hinterlandies Fashion and Imelda's on Maple.

It will take place on September 23, with doors opening at 8.45am the Pavilion, Maleny Showgrounds.

Tickets are \$35, including three raffle tickets, and can be purchased as tables of six or individually.

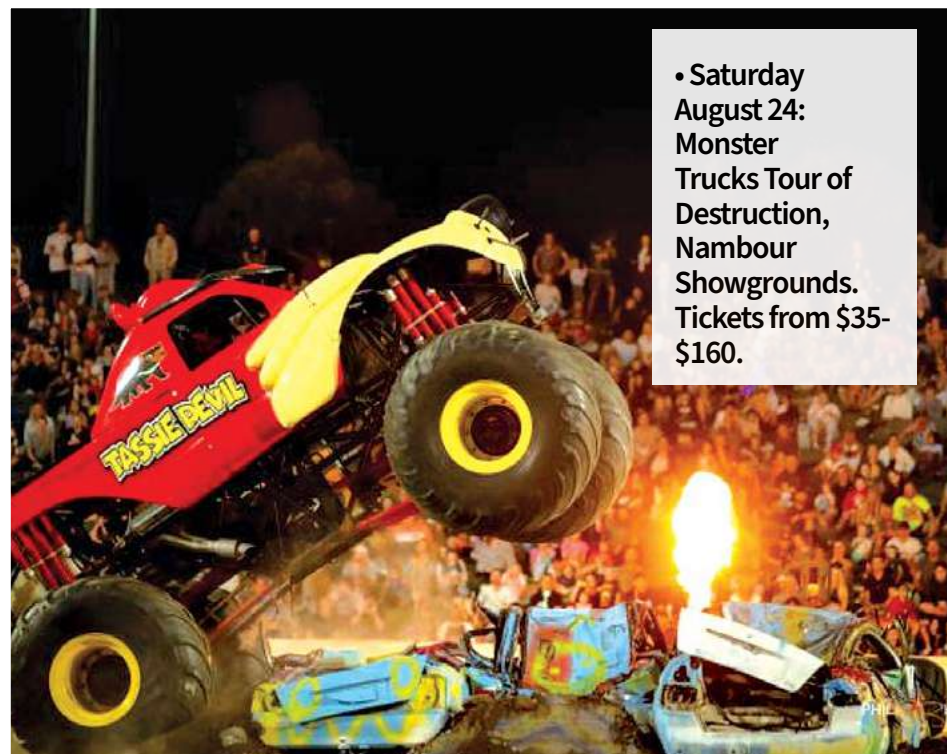
To secure your spot, contact Carole at 0414 373 734 or Louise at 0415 446 856.

Please note that tickets will not be available at the door.

What's On Day by Day in the Hinterland

Local Events and Entertainment coming up. Preference given to local events of widespread interest. All care taken but please check details with organisers. Send details to editor@sunshinevalleygazette.com.au.

- **Wednesday August 21: Mapleton Community Crop Swap**, 9am at The Old School House (TOSH). Share and swap produce with your community.
- **Thursday August 22: The Jazz Sessions** - The Jess Spina Quartet in an intimate setting, hosted by Robyn Brown at The Presyncnt, 15 Ann Street, Nambour, 6pm-midnight. Tickets: events.humanitix.com/the-jazz-sessions.
- **Friday August 23: Cuban Dance Co.** - Maleny Lane, 6-9pm, BYO, outdoor venue subject to weather conditions. Visit the Facebook page for details/updates.
- **Saturday August 24: Groovin' Up Soul Sistas** - 3 bands, funky grooves and stories, The Presyncnt, 15 Ann Street, Nambour, 7pm-midnight. Tickets: events.humanitix.com.
- **Saturday August 24: Mapleton Country Market from 8am** to noon at the Mapleton School Carpark at 24 Flaxton Drive Mapleton. Info: countrymarket.mapleton@gmail.com.
- **Saturday August 24: Monster Trucks Tour of Destruction**, Nambour Showgrounds. Tickets from \$35-\$160.
- **Saturday August 24: Allan Reed at ACMA** concert, Yandina Hall of Fame, 12 noon. Entry \$10, members \$8.
- **Saturday August 24: Classic Car Display, 9am-1pm**, Repco car park, Nambour. Hosted by Maroochy Vehicle Owners Club. Free entry.
- **Saturday August 24: Monster Trucks Tour of Destruction** at Nambour Showgrounds, 5pm-6.45pm. Enjoy stunts, FMX tricks, fireworks. Tickets via eventbrite.com.
- **Saturday August 24: Kenilworth Country Markets, 8am-1.30pm** at Kenilworth Town Park, Charles Street.



• **Saturday August 24: Monster Trucks Tour of Destruction, Nambour Showgrounds.** Tickets from \$35-\$160.

- **Saturday August 24: Yandina Country Market, 6am-12pm** at North Street, Yandina.
- **Sunday August 25: Dignified Anger: Stories for a Perilous Now** at Kari's House Theatre, 4pm. Tickets via www.trybooking.com/1255225.
- **Sunday August 25: Club Yandina's Memorial Bowls Fundraiser** for Bloomhill Cancer Care. BBQ lunch at noon, Bowls at 1pm. Contact: 5446 7126.
- **Sunday August 26: Maleny Art, Craft and Collectables Markets, 8am-2pm** at Maleny RSL.
- **Sunday August 26: Mapleton Country Markets, 8am-12pm** at Mapleton School.
- **Thursday August 29: RSPCA Fundraiser High Tea**, Nambour Crushers Rugby League Club, 1pm-4pm. \$60 per head. Email crazyforcupcakes3@gmail.com for tickets.
- **Friday August 30: Jordie Lane at Eudlo** Hall, 6.30pm. Tickets \$25/\$20/\$10 via www.jordie-lane.com.
- **Saturday August 31: Dignified Anger: Stories for a Perilous Now** at Maleny Playhouse, Showgrounds, 7pm. Tickets via www.trybooking.com/1255210.

- **Saturday August 31: Yandina Community Gardens Introduction** to Permaculture Workshop, 9am-11am. Book via events.humanitix.com.
- **Saturday August 31: Mapleton Country Market** at Mapleton State School, 8am-12pm. Food, crafts, and live music.
- **Saturday August 31: Wildflower Botany Walk, Mapleton** National Park, part of the Sunshine Coast Wildflower Festival. Details at sunshine-coast.qld.gov.au.
- **Friday August 30: Zaleta Love Food Give** Food Long Lunch, Flaxton Gardens. Tickets: Humanitix/love-food-long-lunch.
- **Saturday August 31: State Emergency Services Expo**, Nambour Showgrounds, 10am-2pm. Free event.
- **Saturday August 31: Mapleton Country Market, 8am-12pm** at Mapleton State School. Enjoy food, fresh produce, crafts, and live music.
- **Monday September 2: Mapleton Choir rehearsals begin**, 7pm-9pm at Kureelpa Hall.

- New members warmly welcomed.
- **Wednesday September 4: MADCA General Meeting, 6.30pm** at Mapleton Bowls Club.
 - **Wednesday September 4: Nambour Chamber Coffee Catchup** and Networking Event at The Big Pineapple, 7.45am-9am. \$5 for non-members.
 - **Thursday September 5 - Saturday September 7: Loads of Love, Light and Laughter** - Four one-act plays at Lind Lane Theatre, Nambour. Enquiries: 1300 732 764 or visit trybooking.com.
 - **Thursday September 5 - Sunday September 8: The Shining Hour folk** supergroup tour, Maleny, Pomona, Coolum, and Eudlo. Tickets: www.redchair.com.au.
 - **Friday September 6 - Saturday September 7: Nambour Orchid Society Spring Show**, Nambour Uniting Church. 8am-3.30pm Friday, 8am-1pm Saturday. \$5 admission.
 - **Saturday September 7: Fire Up DanceSport Championship**, Venue 114, Bokarina. Contact: events@jively.com.au.
 - **Saturday September 7: Collectorama, Nambour Showgrounds.** Tickets: events.sunshine-coast.qld.gov.au.
 - **Saturday September 7: Galls, Burls and Plant Oddities Workshop**, Florabunda Nursery, 9am-10.30am. RSVP by Sept 5 at florabundabushcare@bigpond.com.
 - **Saturday September 7: Live Album Recording with Andrea Kirwin & Claire Evelyann** at Yama-Nui Recording Studio, 6pm. Tickets \$100. Email bookings@peacerun-records.com.
 - **Sunday September 8: Kim Kirkman and Friends** concert, St Georges-in-the-Hills, Maleny, 3pm. Tickets \$25 via humanitix.com.
 - **Saturday September 9: Nambour Twilight Markets, 4.30pm**, food, art and music, Short Street.
 - **Saturday September 9: Nambour Rum-magers Market, 9am-1pm** at Nambour Tram Co, 28 Mill Street. Enquiries: rummage@NambourTram.com.au.
 - **Friday September 13: Rick Price 'Hometown' Tour**, Nambour RSL. Tickets: events.sunshine-coast.qld.gov.au.

SUNDALE NOW SELLING – BOOK A TOUR TODAY!



BOOK A TOUR



AVAILABLE NOW

STUMERS CREEK LOCATION SHOT

FROM \$525,000

61 Jubilee Drive Palmwoods

- 2 (bedrooms)
- 1 (bathroom)
- 1 (car spaces)

New stock available with options of a 2 or 3 bedroom beautifully refurbished units. Surrounded by stunning scenery you'll love to call this your new home.

With some of the Sunshine Coast's best facilities on your doorstep, Palmwoods Garden Village offers residents a relaxed lifestyle and the perfect blend of privacy and connection to the community.

BOOK A TOUR

Please call Shorelle on 1800 572 422 for more information or to book a tour



ONLY \$725,000

4 Wembley Road Coolum Beach

- 2 (bedrooms)
- 1.5 (bathroom)
- 1 (car spaces)

Unit 22 is a stones throw from the tranquil waters of Stumers Creek that wraps around the village.

Your Coolum Waters home is architecturally designed to compliment your beachside lifestyle with a spacious, breezy layout and easy flow through indoor and outdoor living spaces. Situated just moments from Coolum Beach our community offers a carefree lifestyle within a connected community.

BOOK A TOUR

Please call Bronya on 0439 862 940 for more information or to book a tour



Images are indicative and to be used as a guide only. Information correct as at July 2024 and subject to change without notice.

BOOK NOW

Father's Day

CALL 5445 9003

SEPTEMBER 01, 2024

DRAWN 28TH SEPT FROM 2PM

SPRING CHA-CHING!

\$10,000 PRIZE POOL

5,000 GRAND

2,000 MAJOR

1,000 MINOR

+ \$2,000 MINI PRIZES

EARN AN ENTRY TICKET WITH EVERY \$50 DROP
T&C'S APPLY - BE HERE TO WIN

EVERY WEEKEND
FROM 8:30PM | FREE ENTRY | 18+

AUGUST

FRIDAY NIGHTS	SATURDAY NIGHTS
23 DJ MOTO SAS	24 SPERLO & FRIENDS
30 DJ MOTO SAS	31 SPARGO BROS.

SUNDAY'S AT THE PALMY
ALL DAY DINING FROM 11:30AM

MATT RYAN
4th FROM 2PM

TREVA SCOBIE
18th FROM 2PM

JAM SESSIONS
11th & 25th

CONTACT KALEB ON 0409 850 062

FREE POOL

SRI LANKAN PRAWN CURRY

NORTH QLD PRAWNS LIGHTLY GRILLED AND SERVED ON A BED OF COCONUT RICE, STEAMED PAK CHOY TOPPED WITH A CREAMY AND LIGHTLY SPICED COCONUT CURRY SAUCE, CRUSHED PEANUTS AND FRESH CORIANDER

Only \$32

JAG THE JOKER

THURSDAYS FROM 3:30PM

JACKPOTS BY \$50 WEEKLY UNTIL WON

ALL THE WAY FROM BUNDABERG...

SPARGO BROTHERS

SATURDAY AUGUST 31

FREE ENTRY | FROM 8:30PM | 18+ EVENT

28-34 MAIN STREET PALMWOODS | BOOKINGS ESSENTIAL | 1300 PALMWOODS | WWW.PALMWOODSHOTEL.COM.AU |

Bottlemart

There's more in store

WIN A JIM BEAM VIP MUSIC EXPERIENCE

10 PACK

\$44.99 EACH

JIM BEAM WHITE BOURBON 4.8% VARIETIES 10 X 375ML CANS

SPEND \$25 OR MORE ON ANY JIM BEAM PRODUCT AND ENTER AT BOTTLEMART.COM.AU FOR YOUR CHANCE TO WIN.

FOR TERMS AND CONDITIONS, VISIT BOTTLEMART.COM.AU.

WIN A 2025 BRONCOS MEMBERSHIP FOR YOU AND A MATE

FOR TERMS AND CONDITIONS, VISIT BOTTLEMART.COM.AU

XXX GOLD

24 X 375ML BOTTLES OR CANS

\$51.99 EACH

GREAT NORTHERN SUPER CRISP

24 X 330ML BOTTLES OR 375ML CANS

\$54.99 EACH

HAHN SUPER DRY 3.5%

30 X 375ML CANS

30 PACK

\$56.99 EACH

PERONI NASTRO AZZURRO

24 X 330ML BOTTLES

\$59.99 EACH

GORDON'S GIN, SMIRNOFF RED VODKA, BUNDABERG UP RUM OR RED RUM, JOHNNIE WALKER RED LABEL SCOTCH WHISKY OR CAPTAIN MORGAN SPICED GOLD 700ML

\$44.99 EACH

JIM BEAM WHITE BOURBON, ABSOLUT VODKA OR CANADIAN CLUB WHISKY 1LITRE

1LITRE

\$64.99 EACH

SQUEALING PIG WINES (EXCL. THIS PRIZED PIG WINES) 750ML

SAVE \$7

\$14.99 EACH

BEERWAH CELLARS - BEERWAH
BEERWAH DRIVE THRU - BEERWAH
GLASS HOUSE CELLARS - GLASS HOUSE MOUNTAIN

FOREST GLEN CELLARS - FOREST GLEN
MOOLOOLAH CELLARS - MOOLOOLAH
PALMWOODS CELLARS - PALMWOODS
PALMWOODS DRIVE THRU - PALMWOODS

PICK UP DELIVERY FIND US GET THE APP

All specials available from Wednesday 14th August until Tuesday 27th August 2024. Images are for illustrative purposes only. Specials available only in the state of Queensland. Prices may vary in country and far North Queensland. Different pack sizes and variants may not be available in all stores. Bottlemart supports the responsible service of alcohol.

PAY **\$0** UPFRONT MARKETING



Thinking of Selling? Now is the perfect time to list your property. Sell now and pay later!
Contact our office for more information. Conditions apply

CENTURY 21 Living Local

Woombye | 07 5442 1888
Nambour | 07 5441 3366
SALES | RENTALS | COMMERCIAL



Blackall Terrace Dental

N A M B O U R

★★★★★ "Hands down THE BEST dentist experience I've ever had."

★★★★★ "Can't recommend enough. Great dentist and great people."

For clinical excellence and individualised care on the Sunshine Coast
www.blackallterrace dental.com.au
(07) 5441 3583

Exams • Restorations • Crowns • Dentures • Implants • Emergencies • Whitening • Sedation

\$199*
or no gap
WELCOME
OFFER

*New patients only. T&Cs available online. Valid to 30.09.24.

CUB CADET • ROVER • WOLF GARTEN WINTER SPECIALS

SALE

24" DECK
30" DECK
5+5 WARRANTY

RIDER

30" MINI RIDER HYDRO	RRP-\$3,799	\$3,499
24" ROVER MICRO RIDER	RRP-\$3,099	\$2,999
30" MINI RIDER 6 SPEED MANUAL	RRP-\$3,299	\$2,999

New RANCHER

36" ROVER RANCHER AUTODRIVE
547CC 36" FOOT CVT AUTODRIVE
RRP-\$4,099 **\$3,899**

LAWN KING

42" ROVER LAWN KING
KAWASAKI ENGINE 18HP V TWIN
RRP-\$5,399 **\$4,999**

42" ROVER LAWN KING
KAWASAKI ENGINE 21HP AUTO DIFF LOCK V TWIN
RRP-\$6,299 **\$5,899**

New
I-547/42 HYDRO
RRP-\$4,899 **\$4,499**

WOLF Garten

FREE GIFT PACK
VALUE \$89.95
WITH EVERY ROVER &
CUB CADET RIDE ON SOLD
(WHILE STOCKS LAST)

20% OFF
LOPPERS
10% OFF
ALL OTHER
WOLF GARTEN
PRODUCTS

UP TO 2 ACRES 5+5 WARRANTY ROVER

FREE LOCAL DELIVERY • COMPLEMENTARY 4 LITRES OIL SUPPLIED BY NORTH COAST MOWER CENTRE (2 LITRES RIDER MODELS) FOR 1ST OIL CHANGE SERVICES

ELECTRIC CUB CADET RIDE ON MOWERS
BOTH WITH 6 YEAR WARRANTY INC BATTERIES.

6 YR WARRANTY
30" CUTTING DECK
ELECTRIC POWER

CC30E RRP-\$6,799 **\$6,399**

6 YR WARRANTY
42" CUTTING DECK
ELECTRIC POWER

LT42E RRP-\$9,999 **\$8,799**

XT & LX

XT1 42 INTELLIPOWER	RRP-\$5,199	\$4,799
LX42 XT2 24HP V TWIN KAWASAKI	RRP-\$6,999	\$6,499
New Model LX42 XT2 PUSH BUTTON START, TRACTION CONTROL	RRP-\$6,999	\$6,499
LX46 679CC V TWIN EFI	RRP-\$7,599	\$6,999

PRO Z

PRO Z 148S	RRP-\$16,999	\$14,999
PRO Z 760S	RRP-\$27,499	\$23,999
PROZ 972SD	RRP-\$34,499	\$27,999
PRO Z 972SDL DUEL WHEELER BEACON BUT NO LIGHTS. SELF LEVELLING SEAT	RRP-\$36,499	\$31,999

while stocks last

Cub Cadet

ZERO TURN ULTIMA LAP BAR

ZT1 42" PRESSED DECK 21.5HP V TWIN KAWASAKI ENGINE	RRP-\$7,599	\$6,999
42" FABRICATED DECK 21.5HP V TWIN KAWASAKI ENGINE	RRP-\$8,299	\$7,699
46" FABRICATED DECK 23HP V TWIN KAWASAKI ENGINE	RRP-\$8,799	\$8,299
ZT2 54" FABRICATED DECK 23HP V TWIN KAWASAKI ENGINE	RRP-\$10,299	\$9,499
ZTX5 48" FABRICATED DECK 54" FABRICATED DECK	RRP-\$13,999	\$12,799
60" FABRICATED DECK	RRP-\$14,899	\$13,499
ZTZS4 48" FABRICATED DECK 23HP KAWASAKI V-TWIN	RRP-\$14,499	\$13,499
ZTXS4 54" FABRICATED DECK ULTIMA STEERING WHEEL	RRP-\$14,899	\$13,899

OUR BEST SELLING MOWERS

ZTS1
4 WHEEL STEER

42" FABRICATED DECK	RRP-\$8,899	\$8,299
46" FABRICATED DECK	RRP-\$9,599	\$8,699

FREE LOCAL DELIVERY • COMPLEMENTARY 4 LITRES CUB CADET OIL FOR 1ST SERVICES