

The Geography and Color of Poverty in Anne Arundel County



Anne Arundel County Partnership
for Children, Youth & Families

One of Maryland's Local Management Boards

Pamela M. Brown, Ph.D.
Executive Director,
srbrow00@aacounty.org

How is Our County Doing?

2018 Estimates	Anne Arundel	Maryland	United States
Families Below Poverty Level	5.1%	6.0%	9.3%
Individuals Below Poverty Level	7.1%	9.0%	13.1%
Median Household Income	\$97,814	\$83,242	\$61,937
Unemployment Rate, March 2020	2.9%	3.3%	4.5%
High Housing Costs*	29.2%	31.6%	31.9%
Violent Crime (per 100,000)	316.8	468.7	368.9
High School Graduation	92.3%	90.5%	88.3%
English as Primary Language	87.9%	80.7%	78.1%
Households Receiving SNAP Benefits	5.4%	9.4%	11.3%
Uninsured	4.2%	6.0%	8.9%
Percent of residents reporting routine check up in past year	82.7%	78.0%	77.0%



*Percent of people paying 30 percent or more of household income on monthly housing costs.
 Data Sources: U.S. Census Bureau: 2018 American Community Survey 1-year Estimates; United States Department of Labor: Bureau of Labor Statistics; 2015 Crime in the United States, Federal Bureau of Investigation; Centers for Disease Control, 2018 Maryland BRFSS

Anne Arundel County Population Demographics

Anne Arundel County Population change 2010-2020					
	2010	2020	Population Change	Percent Change	Percent of Total Population
Total Population	537656	588261	50605	9.41%	
White alone	405456	377634	-27822	-6.86%	64.19%
Black or African American alone	83484	104473	20989	25.14%	17.76%
Hispanic	32902	56796	23894	72.62%	9.65%
American Indian and Alaska Native alone	1665	2354	689	41.38%	0.40%
Asian alone	18352	25504	7152	38.97%	4.34%
Native Hawaiian and Other Pacific Islander alone	484	449	-35	-7.23%	0.08%

Source: US Decennial Census Redistricting Data (PL 94-171) P1, P2, 2010, 2020

**Anne Arundel County Estimated Annual Household Income Numbers
2016-2019**

Totals	2016		2019		
Per Household	Number	%	Number	%	Percent Change
Less than \$25,000	20,439	10%	16,127	7.4%	-21%
\$25,000 - \$34,999	10,875	5.3%	10,386	4.8%	-4%
\$35,000 - \$49,999	18,775	9.2%	14,214	6.6%	-24%
\$50,000 - \$74,999	32,573	15.9%	34,349	15.9%	5%
\$75,000 - \$99,999	29,148	14.2%	30,813	14.3%	6%
\$100,000 - \$199,999	68,734	33.6%	74,692	34.6%	9%
\$200,000 or more	24,285	11.9%	35,619	16.5%	47%

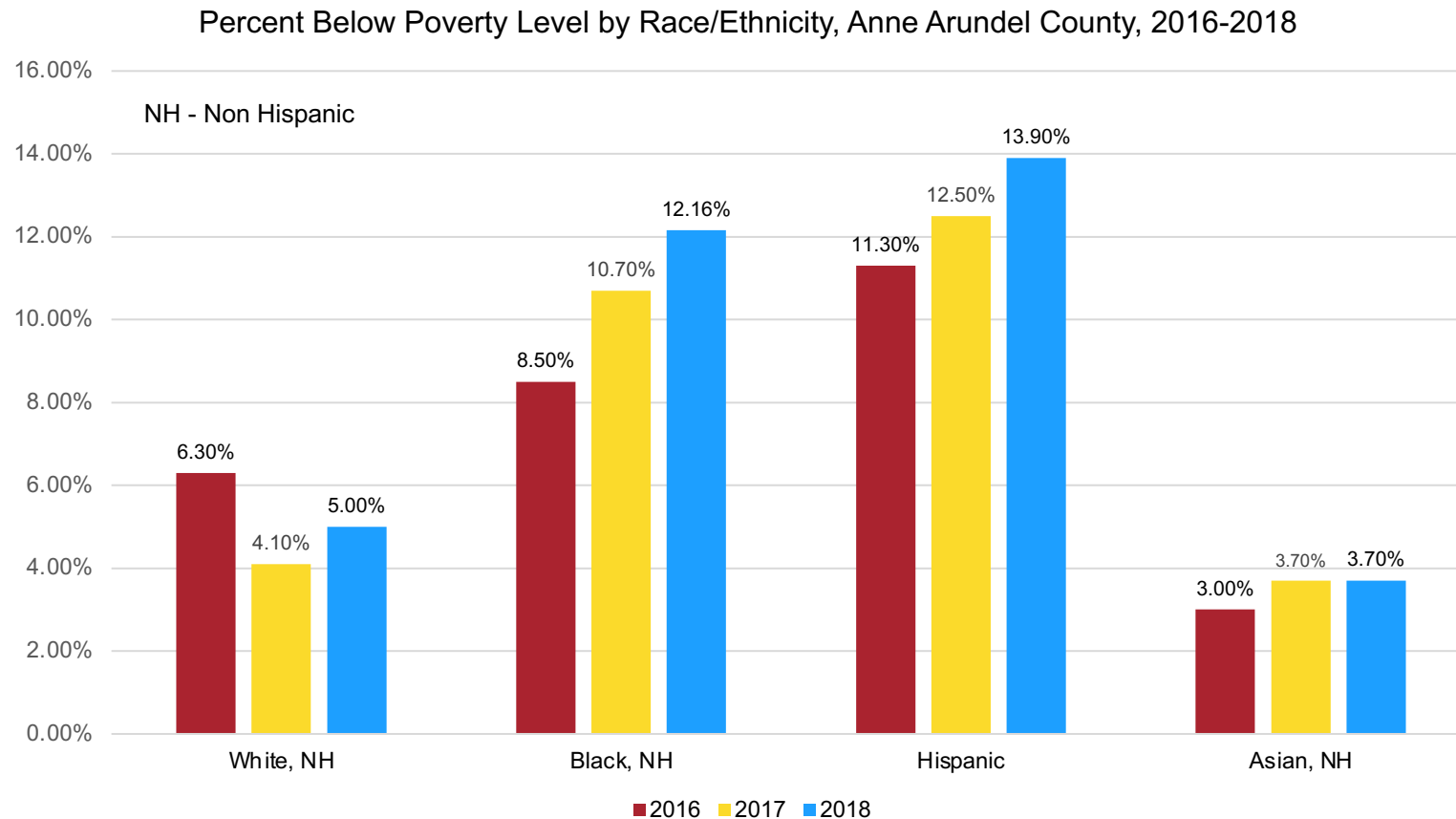
US Census Bureau American Community Survey estimates, 2020

Anne Arundel County Poverty, 2014-2019

	Poverty Status, Anne Arundel County, 2014-2019											
	2014		2015		2016		2017		2018		2019	
	Below poverty level	% below poverty level	Below poverty level	% below poverty level	Below poverty level	% below poverty level	Below poverty level	% below poverty level	Below poverty level	% below poverty level	Below poverty level	% below poverty level
Population below poverty level	31,573	5.90%	31,573	5.90%	33,168	6.10%	32,368	5.80%	39,678	7.1%	28,044	5.0%
Age												
Under 18 years	8,846	7.10%	8,359	6.70%	8,923	7.10%	9,024	7.10%	13,887	11.0%	9,433	7.4%
18 to 64 years	8,377	6.80%	19,571	5.70%	20,126	5.80%	18,585	5.30%	21,663	6.2%	15,256	4.4%
65 years and over	3,563	5.20%	3,643	5.10%	4,119	5.60%	4,759	6.00%	4,128	5.0%	3,355	3.9%

Source: data.census.gov ACS 1-Year Estimate Subject Tables

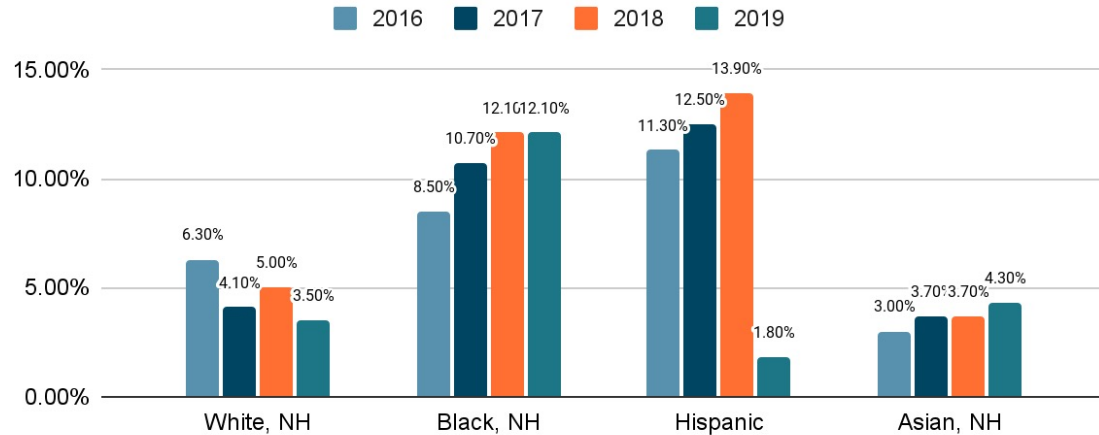
US Census Estimates for Poverty by Race/Ethnicity 2016-2018



Economic Disparities

Percent Below Poverty Level by Race, Anne Arundel County, 2016-2019

NH-Non Hispanic



Source: U.S. Census Bureau: 2016, 2017, 2018, 2019 American Community Survey 1 Year Estimates

Children Living with Single Female Head of Household Living Below Poverty Anne Arundel County, 2019

	2017	2018	2019
White	9.9%	10.8%	10%
Black	12.6%	15.6%	17.4%
Hispanic	18.8%	24.2%	24.1%
Asian	12.8%	10.3%	9.6%

Source: U.S. Census Bureau American Community Survey 2017-2019 5 Year Estimates

Median Household Income by Race in Anne Arundel County, 2016-2019

	2016	2017	2018	2019
White, NH	\$101,174	\$102,080	\$103,360	\$104,458
Black, NH	\$72,015	\$79,105	\$78,888	\$91,784
Hispanic	\$93,847	\$73,405	\$72,304	\$93,475
Asian, NH	\$107,385	\$107,650	\$82,804	\$103,048

Source: U.S. Census Bureau 2016, 2017, and 2018, 2019 American Community Survey 1-Year Estimates

Asset Limited Income Constrained Employed (ALICE) Families

Despite being employed, many individuals and families do not earn enough to afford the five basic household necessities:

- Housing
- Child care
- Food
- Transportation
- Health care

Even though they are working, their income does not cover the cost of living in the state and they often require public assistance to survive.

<https://www.uwcm.org/alice>

Maryland Counties, 2018		
COUNTY	TOTAL HOUSEHOLDS	% ALICE & POVERTY
Allegany	27,190	55%
Anne Arundel	212,687	35%
Baltimore	313,259	40%
Baltimore City	237,204	55%
Calvert	31,726	33%
Caroline	12,081	42%
Carroll	60,371	29%
Cecil	36,930	39%
Charles	55,903	38%
Dorchester	13,264	45%
Frederick	95,903	37%
Garrett	12,073	43%

Anne Arundel County Living Wage Calculations, 2019

	1 Adult				2 Adults (1 Working)				2 Adults (Both Working)			
	0 Children	1 Child	2 Children	3 Children	0 Children	1 Child	2 Children	3 Children	0 Children	1 Child	2 Children	3 Children
Living Wage	\$15.84	\$34.18	\$42.52	\$55.16	\$25.81	\$31.22	\$34.81	\$37.85	\$12.91	\$18.47	\$23.13	\$27.67
Poverty Wage	\$6.13	\$8.29	\$10.44	\$12.60	\$8.29	\$10.44	\$12.60	\$14.75	\$4.14	\$5.22	\$6.30	\$7.38
Minimum Wage	\$11.00	\$11.00	\$11.00	\$11.00	\$11.00	\$11.00	\$11.00	\$11.00	\$11.00	\$11.00	\$11.00	\$11.00

Anne Arundel County Typical Expenses, 2019

	1 Adult				2 Adults (Not Working)				2 Adults (Both Working)			
	0 Children	1 Child	2 Children	3 Children	0 Children	1 Child	2 Children	3 Children	0 Children	1 Child	2 Children	3 Children
Food	\$3,177	\$4,670	\$6,990	\$9,294	\$5,825	\$7,238	\$9,305	\$11,345	\$5,825	\$7,238	\$9,305	\$11,345
Child care	\$0	\$9,675	\$19,349	\$29,024	\$0	\$0	\$0	\$0	\$0	\$9,675	\$19,349	\$29,024
Medical	\$3,001	\$8,936	\$8,623	\$8,763	\$6,560	\$8,623	\$8,763	\$8,417	\$6,560	\$8,623	\$8,763	\$8,417
Housing	\$10,764	\$16,512	\$16,512	\$21,372	\$13,260	\$16,512	\$16,512	\$21,372	\$13,260	\$16,512	\$16,512	\$21,372
Transportation	\$5,113	\$9,378	\$11,672	\$13,896	\$9,378	\$11,672	\$13,896	\$12,611	\$9,378	\$11,672	\$13,896	\$12,611
Civic	\$1,811	\$3,889	\$3,554	\$4,127	\$3,889	\$3,554	\$4,127	\$3,982	\$3,889	\$3,554	\$4,127	\$3,982
Other	\$2,875	\$4,687	\$5,144	\$6,216	\$4,687	\$5,144	\$6,216	\$6,235	\$4,687	\$5,144	\$6,216	\$6,235
Annual Taxes	\$6,215	\$13,347	\$16,590	\$22,045	\$10,093	\$12,196	\$13,594	\$14,776	\$10,093	\$14,422	\$18,044	\$22,114
Required annual income before taxes	\$32,956	\$71,094	\$88,435	\$114,738	\$53,692	\$64,941	\$72,414	\$78,737	\$53,692	\$76,841	\$96,213	\$115,098

Anne Arundel County Occupations & Typical Annual Salary, 2019

Management	\$122,080	Protective Service	\$48,124
Business & Financial Operations	\$79,071	Food Preparation & Serving Related	\$24,829
Computer & Mathematical	\$102,049	Building & Grounds Cleaning & Maintenance	\$29,494
Architecture & Engineering	\$96,576	Personal Care & Service	\$26,476
Life, Physical, & Social Science	\$90,570	Sales & Related	\$29,464
Community & Social Service	\$50,354	Office & Administrative Support	\$41,546
Legal	\$75,133	Farming, Fishing & Dorestry	\$35,152
Education, Training & Library	\$61,516	Construction & Extraction	\$48,728
Arts, Design, Entertainment, Sports & Media	\$55,009	Installation, Maintenance & Repair	\$51,487
Healthcare Practitioners & Technical	\$77,240	Production	\$38,487
Healthcare Support	\$31,387	Transportation & Material Moving	\$33,781

Examples of ‘Baked in’ Inequities

Percent Owning Home by Race/Ethnicity Anne Arundel County, 2016-2019				
	2016	2017	2018	2019
White, NH	80.5%	81.7%	80.4%	80.2%
Black, NH	50.5%	55.1%	53.5%	54.8%
Hispanic	59.9%	48.6%	57%	49.6%
Asian, NH	76.6%	69.5%	72.8%	68.7%
Source: U.S. Census Bureau, American Community Survey 1-year Estimates 2017-2019				

Residents Lacking Health Insurance by Race/Ethnicity Anne Arundel County 2019		
	Percent of Residents Uninsured	Number of Residents Uninsured
White, NH	2.3%	8,665
Black, NH	5.0%	4,812
Hispanic	8.7%	3,998
Asian, NH	5.7%	1,195
Total	3.6%	20,195

- Historically, homeownership for Black people has been burdened by redlining, the inability to use their G.I. Bills, and other federal discriminatory practices to inhibit homeownership for Black people (Ray & Perry, 2020).
- GI Bill was structured in a way that ultimately shut doors for the [1.2 million Black veterans](#) who had bravely served their country during World War II, in segregated ranks.

Households on Food Stamps/SNAP Benefits by Race/Ethnicity, Anne Arundel County, 2016-2018

- 11,072 households receive SNAP benefits (American Community Survey, 2019 estimates).
- The median income of those receiving SNAP benefits is \$45,693 (American Community Survey, 2019 estimates).
- The average cost of a meal is \$3.47 in Anne Arundel County (Feeding America, 2021)

Households on Food Stamps/SNAP Benefits	2016	2017	2018
White, NH	4.4%	4.6%	3.4%
Black, NH	19.3%	12.0%	9.9%
Hispanic	18.8%	13.2%	10.6%
Asian, NH	8.9%	4.4%	4.8%

Anne Arundel County Department of Health, 2020

Homelessness in Anne Arundel County...

Counting the Cost

- Homeless families – may be doubled up, living in cars or some sort of shelter - 750 as of April 2021 (AACPS data)
- Developmentally disabled youth and adults
- Adults with chronic behavioral health and medical conditions (may or may not have families) – up to 1500 on a given evening
- Unaccompanied homeless youth - 150-400 on any given night
- Seniors with or without co-occurring conditions; 82 served in FY 2020 (HMIS data)
- 1, 100 served in FY 2020, 415 reported a mental health diagnosis (HMIS data)

Common Needs

Shelter
Health care access
Navigation through services
Eligibility determination
Money management
Medication management

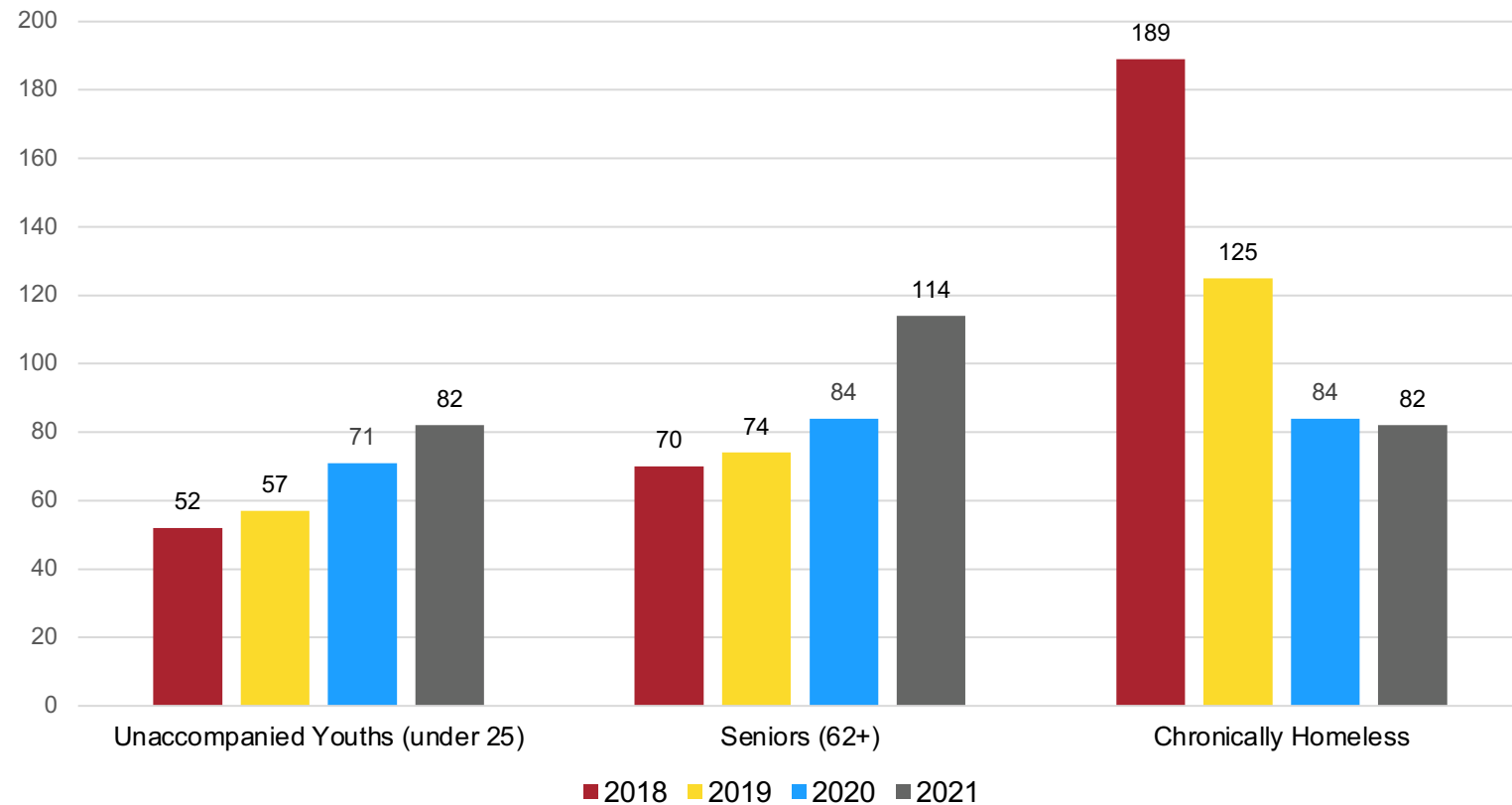
Systems Impacted:

Hospitals
Insurers
Schools
Government



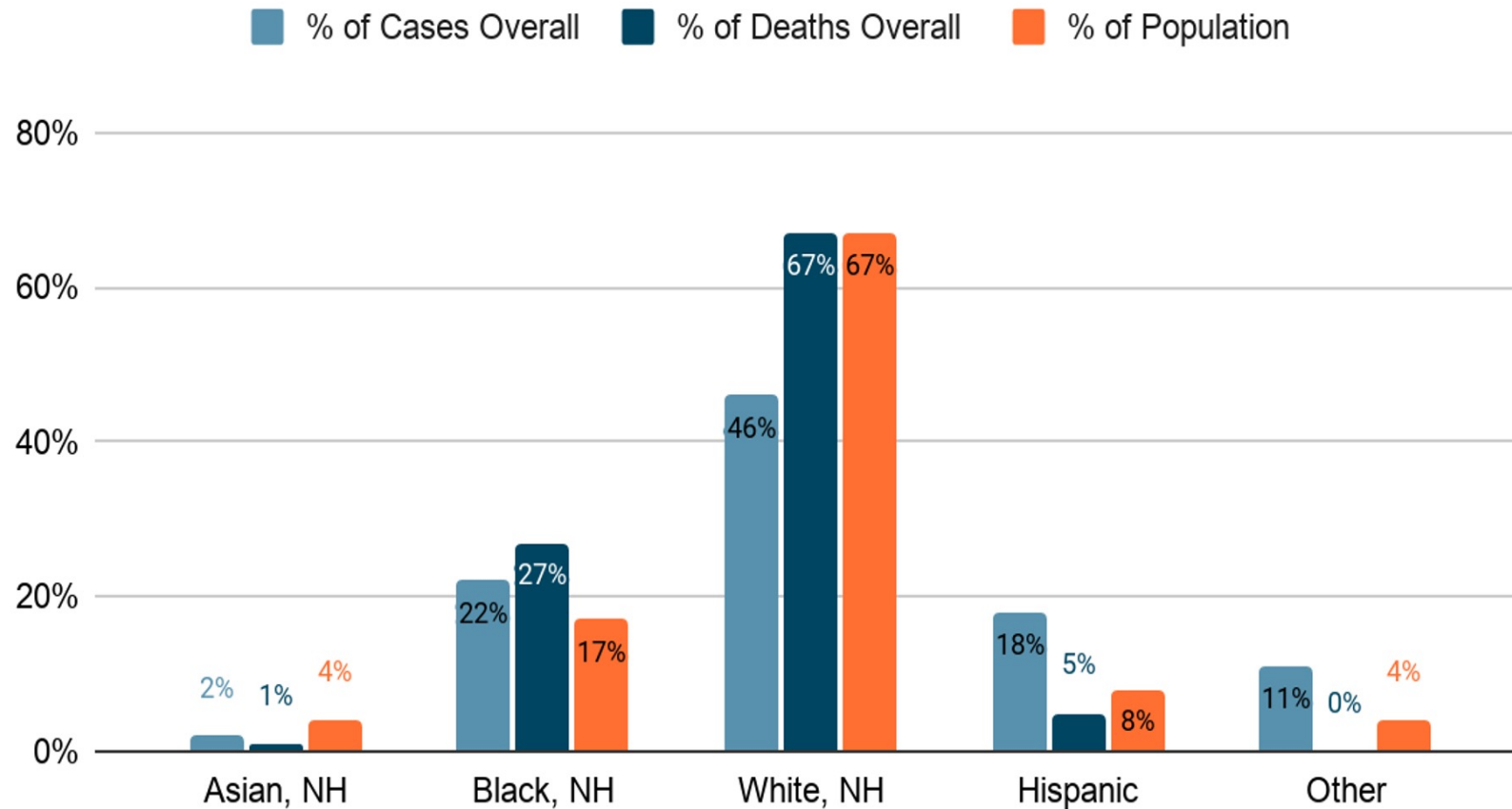
Chronically Homeless, Unaccompanied Youth and Seniors 2018-2021

Anne Arundel County Homeless Youths, Seniors and Chronically Homeless Served 2018-2021



COVID Racial and Ethnic Disparities

Anne Arundel County Cases and Deaths by Race and Ethnicity



Source: Anne Arundel County Department of Health, January 2, 2021

Whites

67% of the population
67% of the deaths
46% of the cases

African Americans

17% of the population
27% of the deaths
22% of the cases

Hispanics

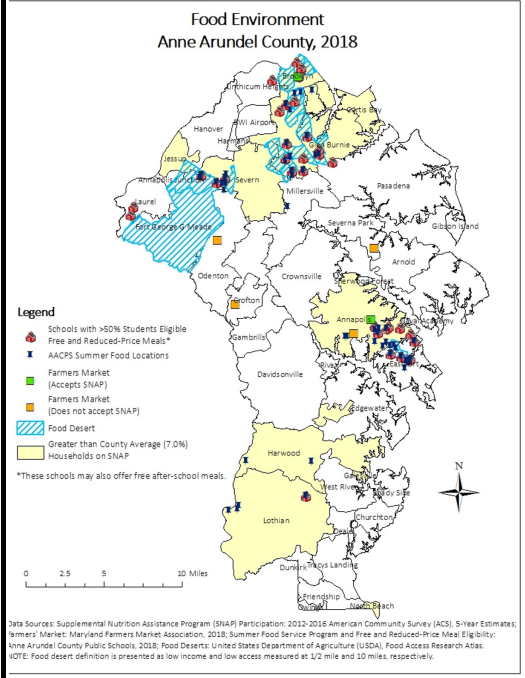
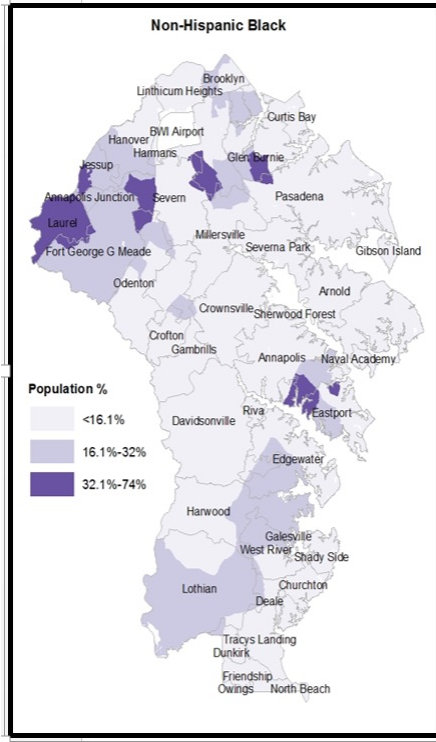
8% of the population
5% of the deaths
18% of the cases

The Social Determinants of Health (SDOH)

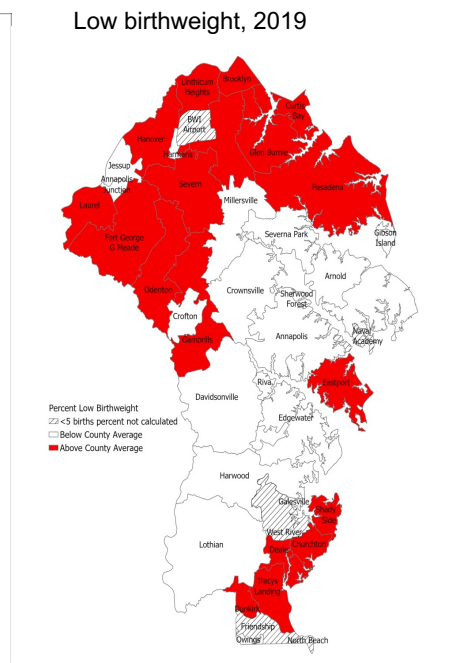
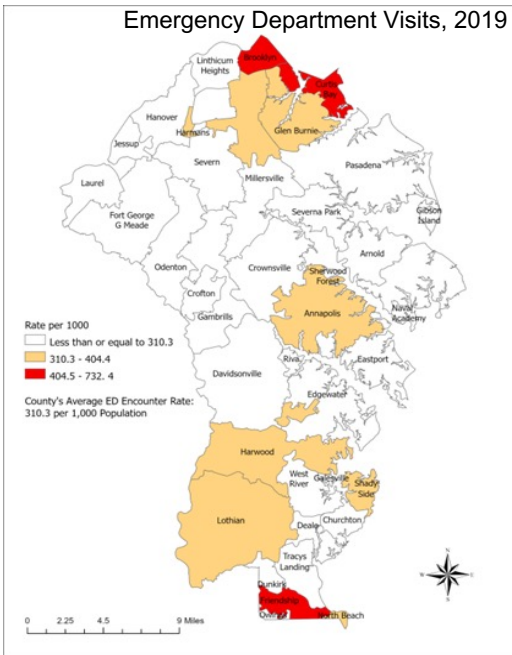
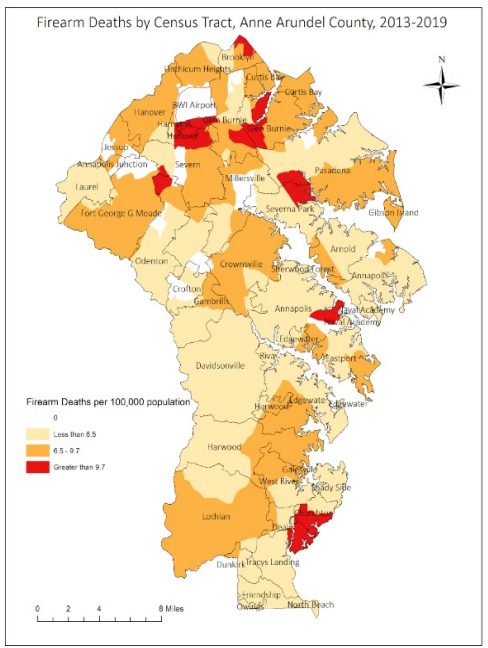
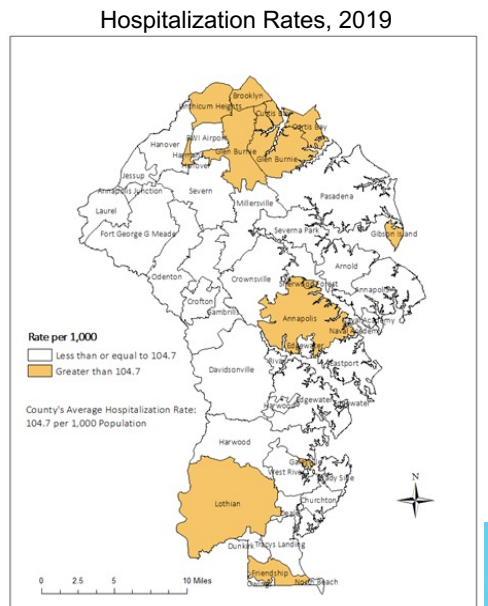
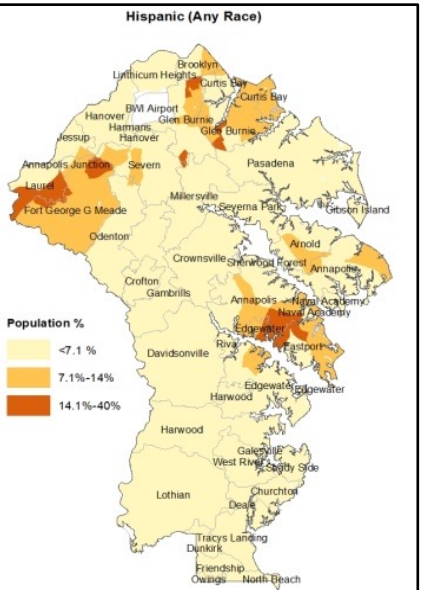
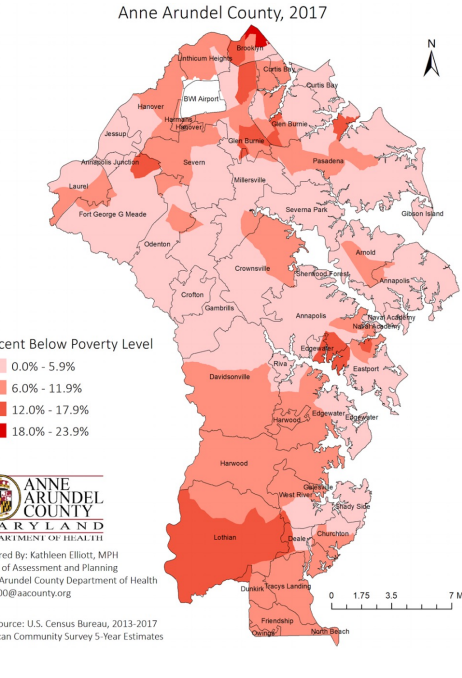
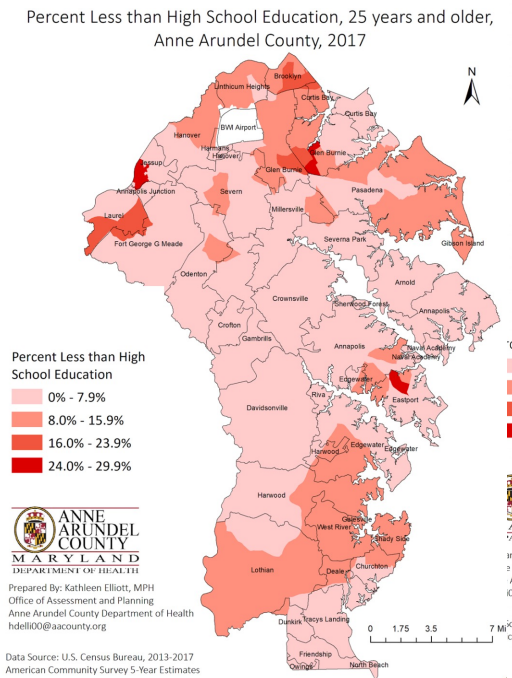
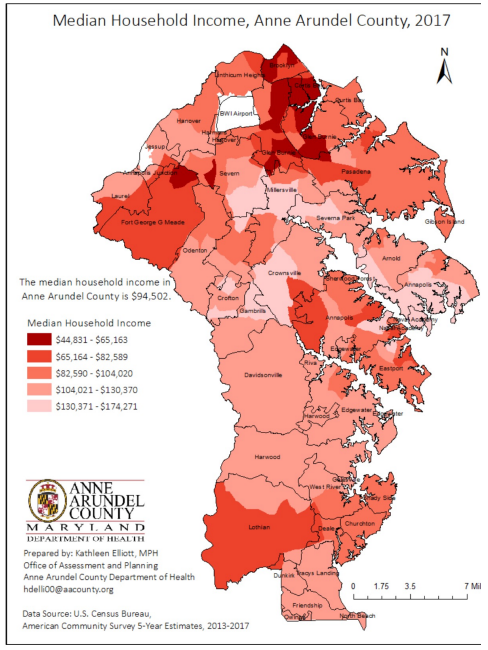
‘The conditions in the environments where people are born, live, learn, work, play, worship, and age that affect a wide range of health, functioning, and quality-of-life outcomes and risks.’

U.S. Department of Health and Human Services
(2021)

- Economic distress and rising social determinants of health spread unequally throughout the county
- Pockets of low income and poverty-level families clustered in North and South County areas, parts of Annapolis, and the Meade/Severn area of West County.
- These areas are disproportionately African American and Hispanic, pointing to a geography and color to county poverty.



SOCIAL DETERMINANTS



**All Demographic, Socioeconomic, and Health Indicators by Zip Code
Anne Arundel County, 2019**
***Red: Higher than County Average**

Zip Code	Area	Poverty Percentage	Percent without High School	Percent of Households on SNAP	ED Visit Rate per 1,000	Percent Low Birth Weight Infants (2015-2019)	Minority Population
20711	Lothian	9.4%	10.6%	9.8%	333.2	7.3%	32.4%
20724	Laurel	7.3%	8.9%	3.5%	250.0	8.6%	67.6%
20755	Ft. Meade	6.9%	3.6%	1.4%	185.4	8.2%	46.0%
20765	Galesville	23.6%	11.3%	25.5%	289.9	0.0%	45.7%
21056	Gibson Island	0.0%	0.0%	0.0%	151.9	0.0%	0.0%
21060	Glen Burnie (East)	7.5%	12.9%	9.2%	356.2%	7.7%	33.4%
21061	Glen Burnie (West)	8.4%	11.8%	11.8%	404.4	8.9%	43.0%
21144	Severn	6.4%	6.0%	9.0%	279.9	8.7%	55.2%
21225	Brooklyn	24.8%	20.6%	29.3%	732.4	11.1%	60.9%
21226	Curtis Bay	9.6%	15.4%	12.3%	576.8	8.3%	27.6%
21401	Annapolis	8.1%	15.4%	12.3%	344.5	7.0%	30.1%
21403	Easport	7.4%	9.2%	7.8%	308.1	7.9%	38.1%
	AA County	5.8%	7.9%	6.1%	310.3	7.7%	31.8%

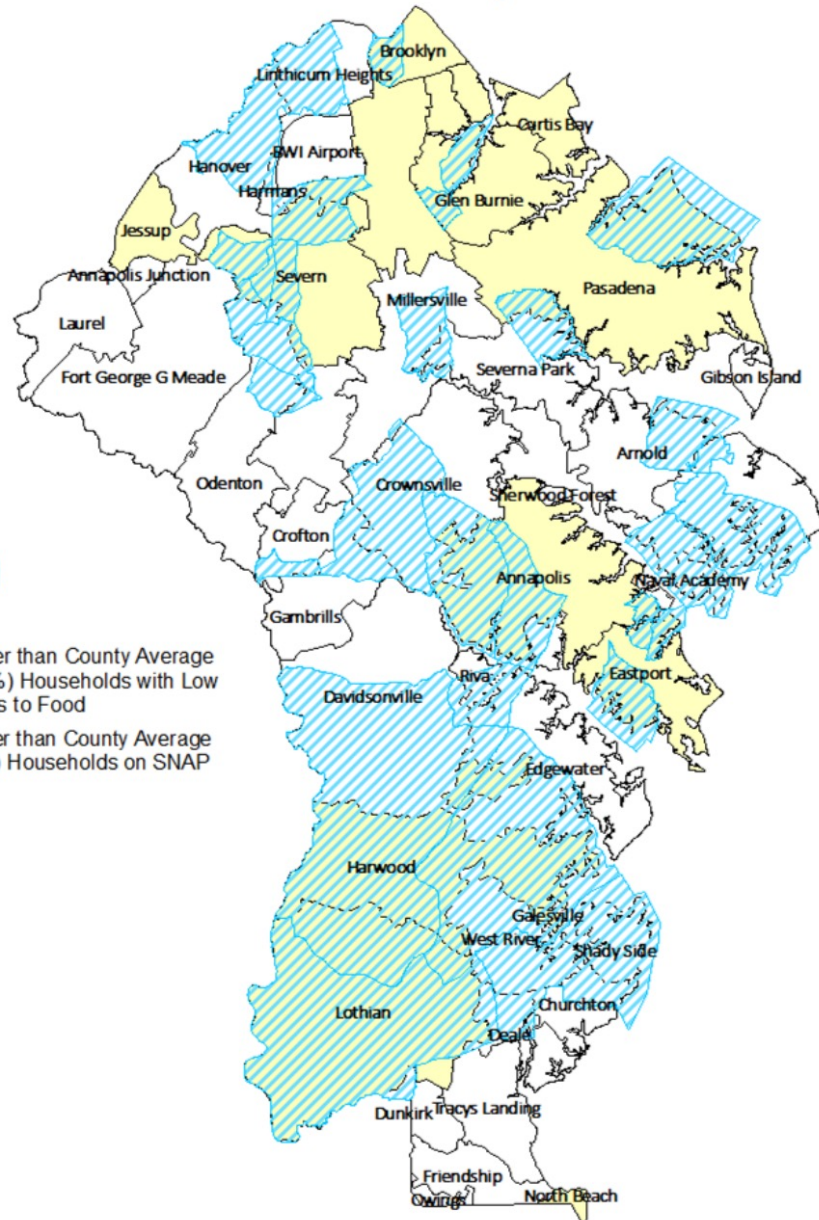
Source: U.S. Census American Community Survey 5 Year Estimates, 2015-2019; Maryland Health Services Cost Review Outpatient Files, 2019

Anne Arundel County Poverty Highest Zip Codes


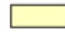
Anne Arundel County Percentage of Poverty by Zip Code, 2016-2019					
ZIP code	Area	Poverty Percentage			
		2016	2017	2018	2019
21225	Brooklyn Park	27.3%	24.9%	24.8%	24.8%
21226	Curtis Bay	16.6%	15.4%	12.9%	9.6%
21060	Glen Burnie (East)	7.9%	7.1%	7.1%	7.5%
21061	Glen Burnie (West)	9.2%	9.1%	8.2%	8.4%
20714	North Beach	10.6%	9.1%	5.8%	6.1%
20751	Deale	10.8%	12.0%	5.5%	5.6%
21401	Annapolis	7.9%	6.9%	7.8%	8.1%
21403	Annapolis	6.9%	7.0%	7.9%	7.4%
	Anne Arundel County	6.9%	5.8%	7.1%	5.0%

Source: US Census estimates, 2020

Access to Healthy Food Anne Arundel County, 2019

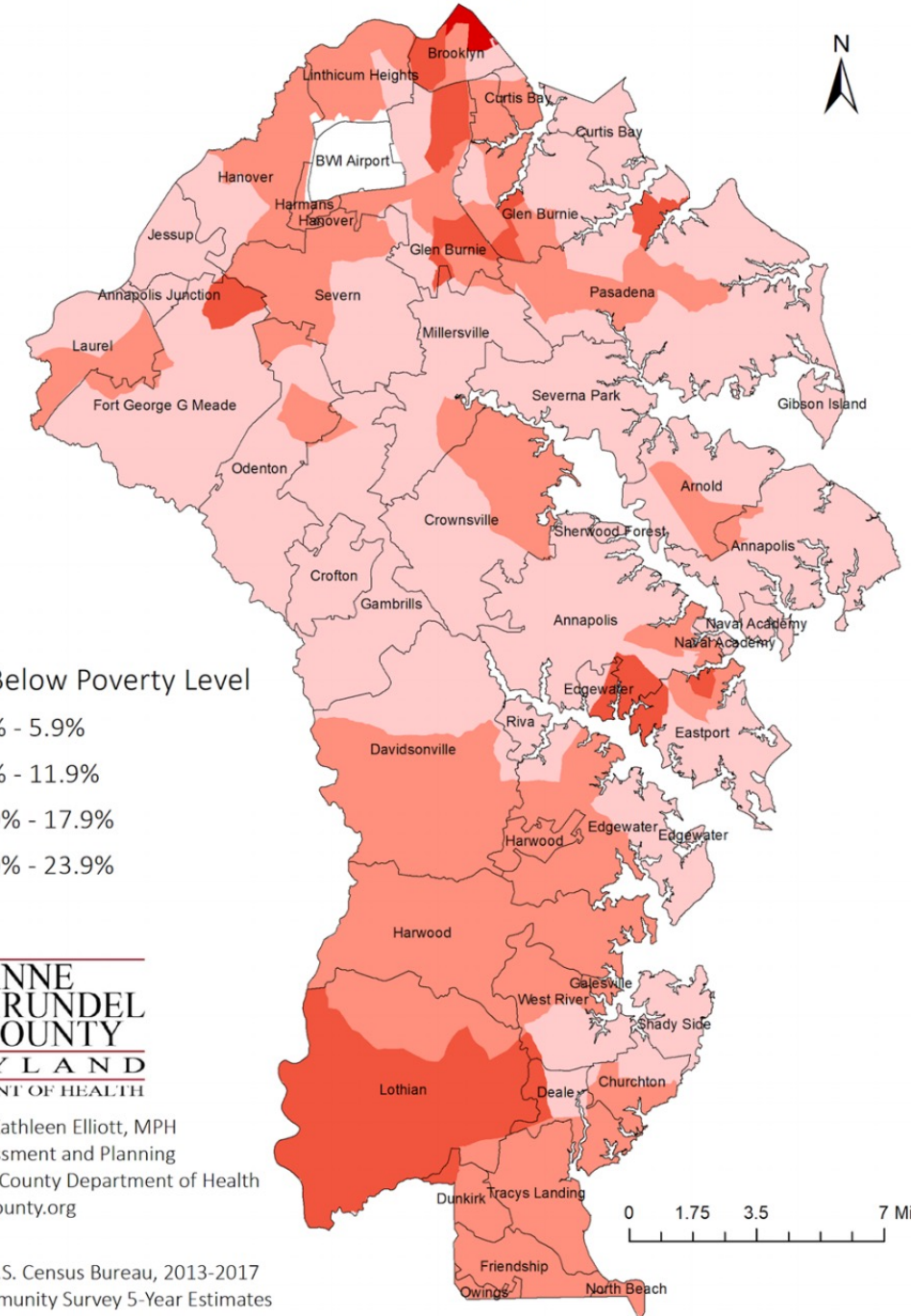


Legend

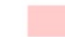



-  Greater than County Average (1.39%) Households with Low Access to Food
-  Greater than County Average (6.7%) Households on SNAP

Data Source: Supplemental Nutrition Assistance Program (SNAP) Participation: 2013-2017 American Community Estimates; Low Access Areas: United States Department of Agriculture (USDA) Food Access Research Atlas. NOTE: Low access is defined as the percentage of housing units more than 1 mile from nearest supermarket or grocery store without access to vehicle.

Anne Arundel County, 2017



Percent Below Poverty Level

-  0.0% - 5.9%
-  6.0% - 11.9%
-  12.0% - 17.9%
-  18.0% - 23.9%



Prepared By: Kathleen Elliott, MPH
Office of Assessment and Planning
Anne Arundel County Department of Health
hdelli00@aacounty.org

Data Source: U.S. Census Bureau, 2013-2017 American Community Survey 5-Year Estimates

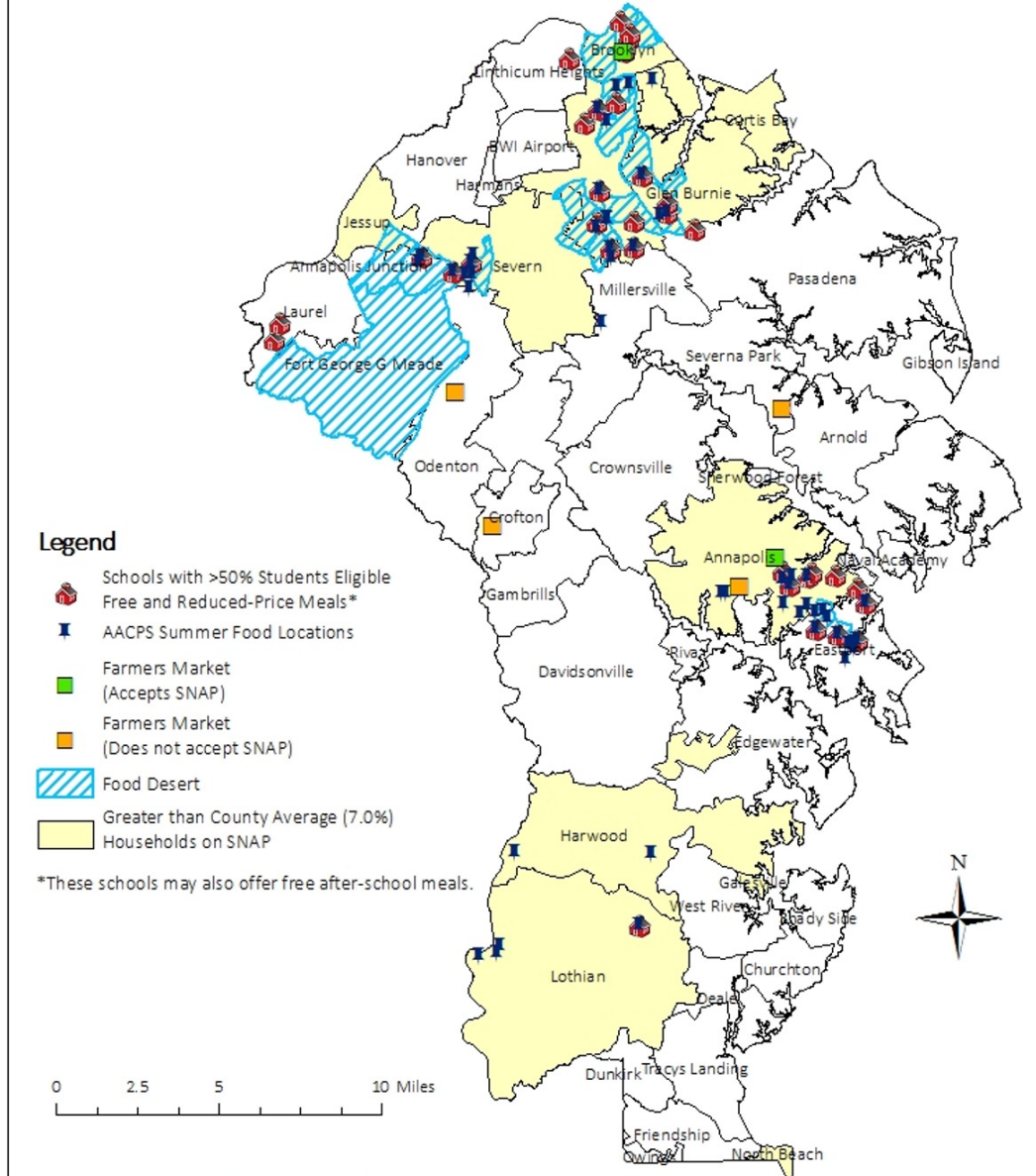
Food Deserts

- Food deserts are defined by the United States Department of Agriculture (USDA) as urban neighborhoods and rural towns without ready access to fresh, healthy and affordable food.
- Typically, these areas are low-income, where the population lacks economic resources to travel for food purchases.
- There are 17 census tracts which are considered food deserts in Anne Arundel County located in Glen Burnie, Brooklyn Park, Linthicum Heights, Eastport, Fort Meade, Jessup and Severn

74,522
county residents
currently reside in a
food desert

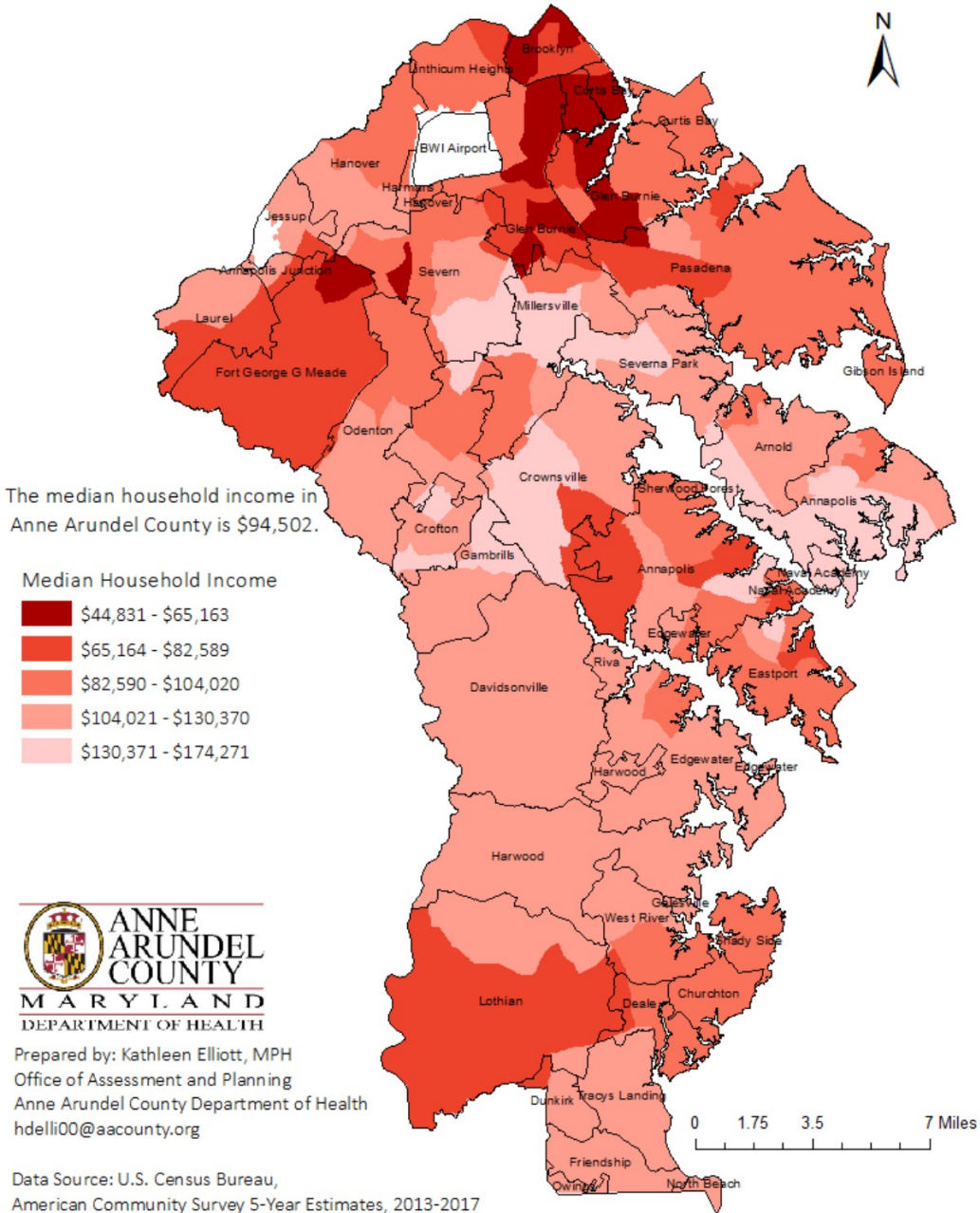
The number of
free lunches
served daily to students
has increased
7%
in four years

Food Environment
Anne Arundel County, 2018

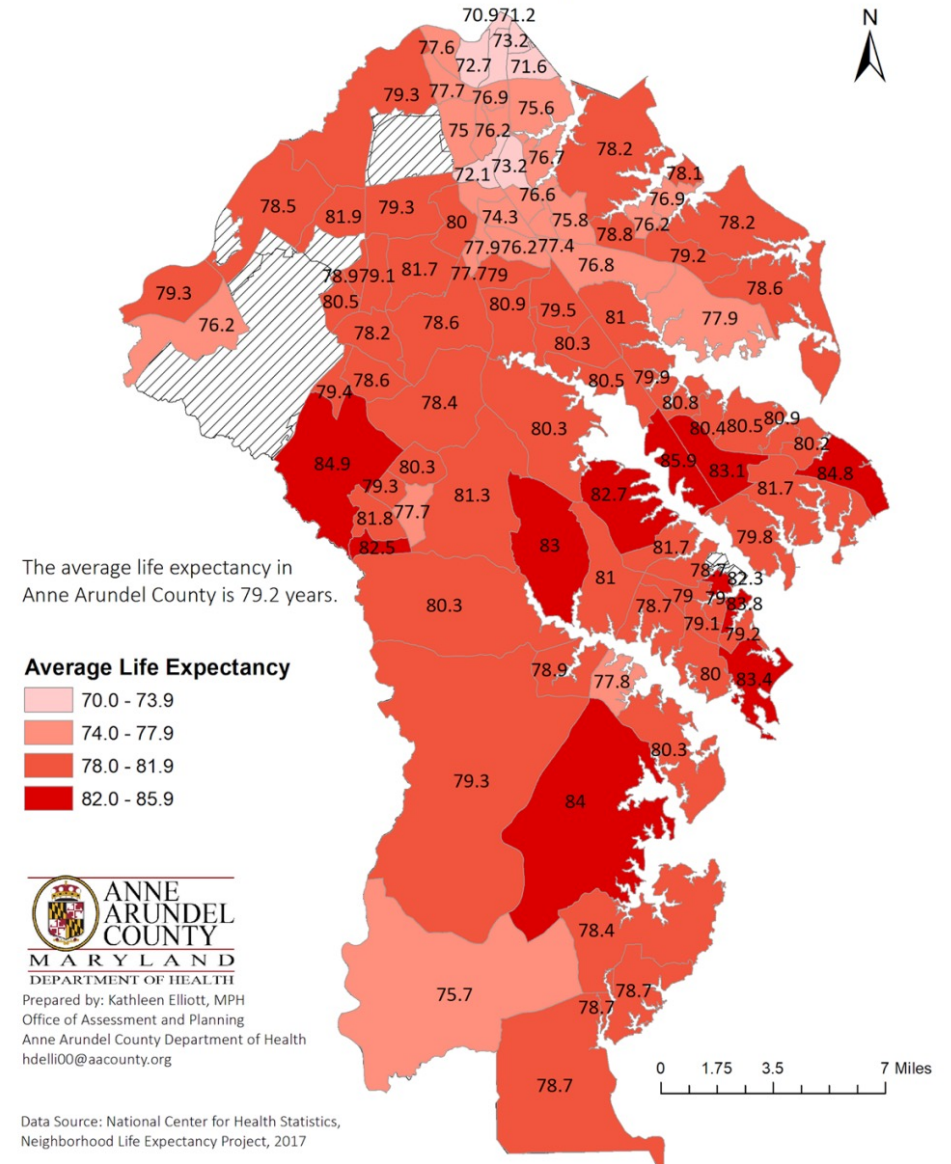


Data Sources: Supplemental Nutrition Assistance Program (SNAP) Participation: 2012-2016 American Community Survey (ACS), 5-Year Estimates; Farmers' Market: Maryland Farmers Market Association, 2018; Summer Food Service Program and Free and Reduced-Price Meal Eligibility: Anne Arundel County Public Schools, 2018; Food Deserts: United States Department of Agriculture (USDA), Food Access Research Atlas. NOTE: Food desert definition is presented as low income and low access measured at 1/2 mile and 10 miles, respectively.

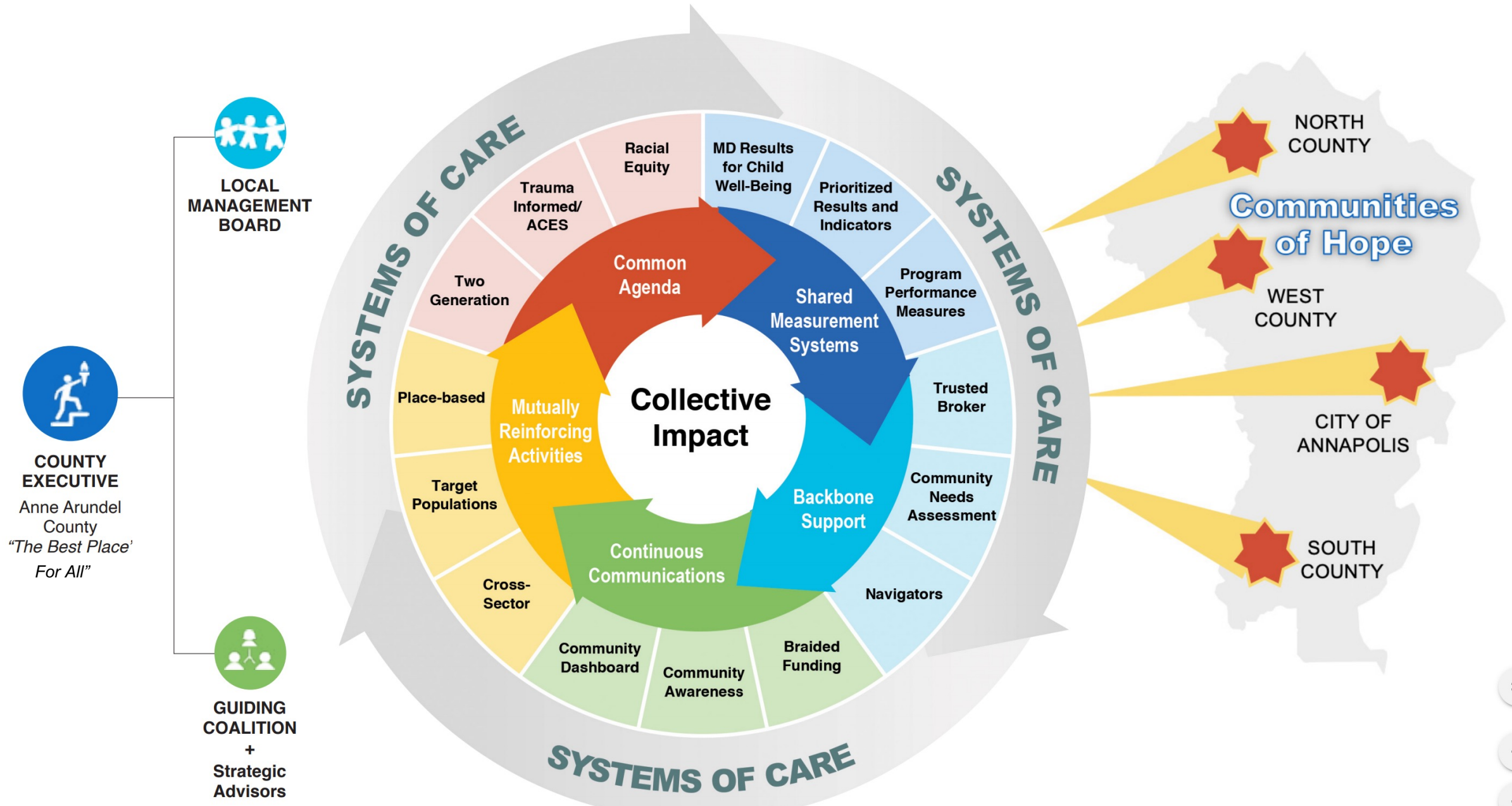
Median Household Income, Anne Arundel County, 2017



Average Life Expectancy by Census Tract, Anne Arundel County, 2010-2015



Sparking and Sustaining Collective Action

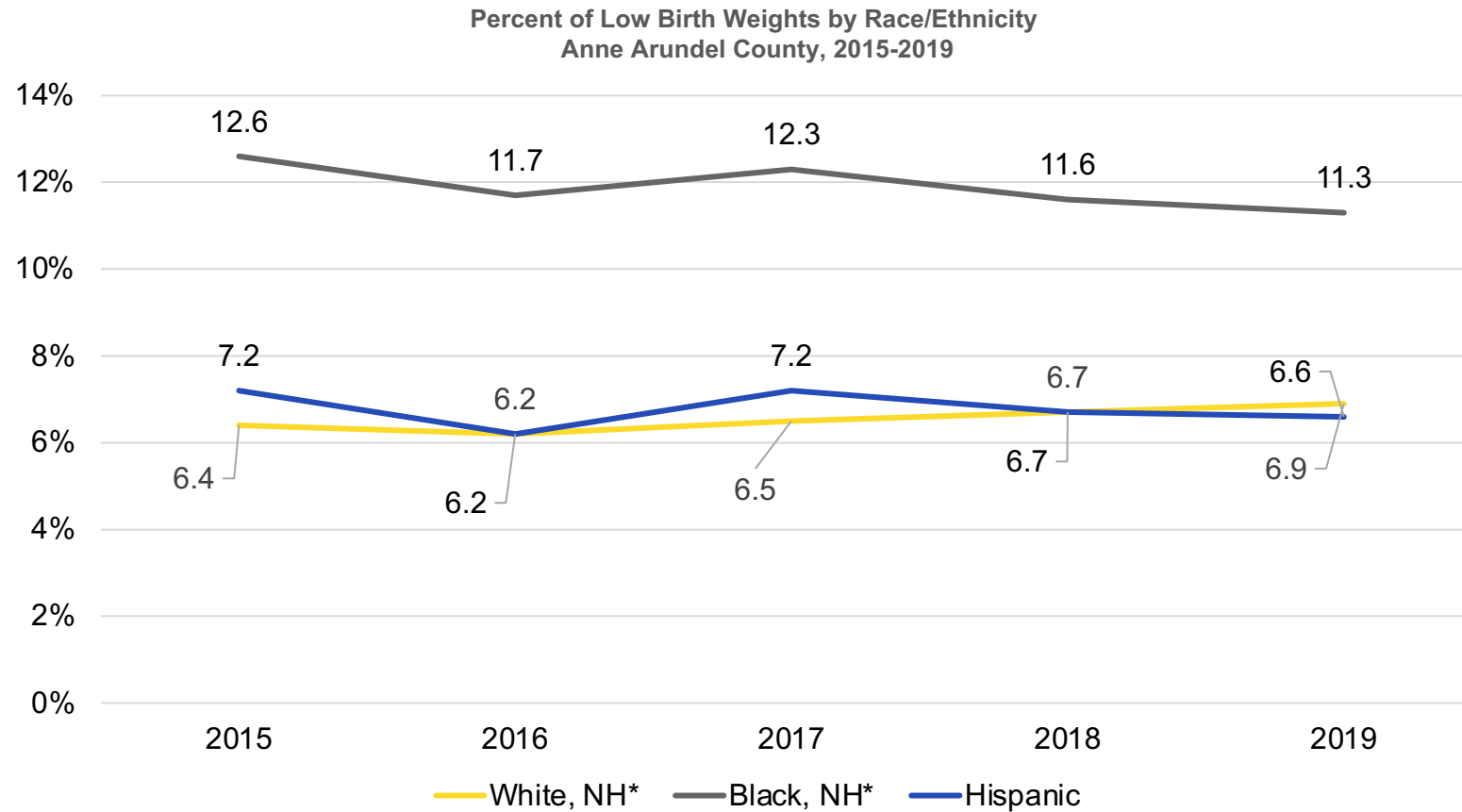


Children and Families Living in our Communities of Hope

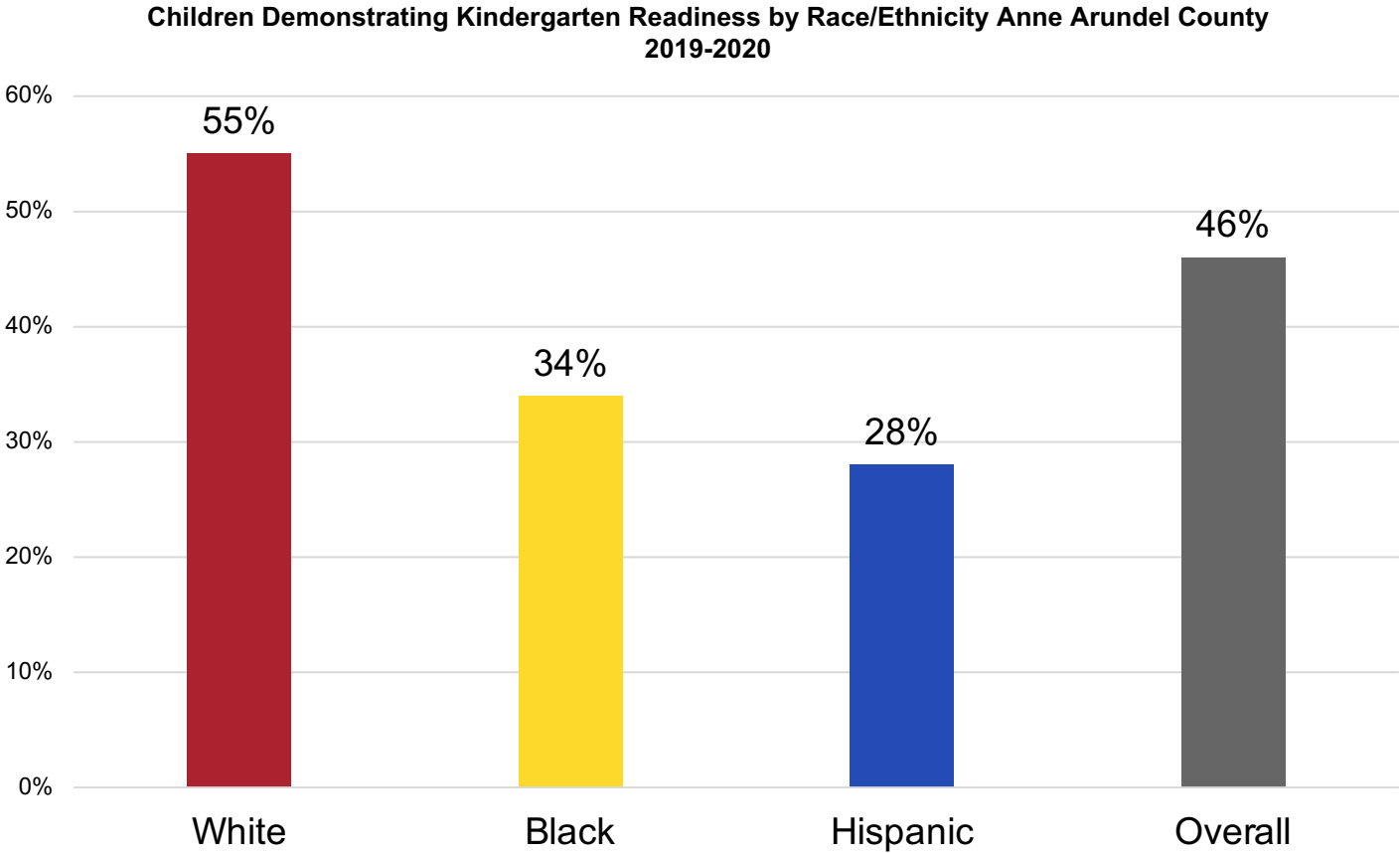
- Disproportionately African American
- Low income, very low income, living in poverty
- Impacted by Adverse Community Environments often caused by historical and systemic racism
- Suffer from health disparities: low birth weight, environmental issues including asthma, diabetes, heart disease
- Food access issues
- Rent overburdened
- Lack of transportation
- Incarcerated partner
- Many economic and racial disparities



Anne Arundel County Low Birth Weight by Race/Ethnicity 2015-2019



Anne Arundel County Readiness for Kindergarten, 2020



Ready for Kindergarten (R4K): Maryland Comprehensive Early Childhood Assessment, 2019-2020

Residents/Children Lacking Health Insurance by Race/Ethnicity, 2019

Residents Lacking Health Insurance by Race/Ethnicity Anne Arundel County, 2019		
	Percent of Residents Uninsured	Number of Residents Uninsured
White, NH	2.3%	8,665
Black, NH	5.0%	4,812
Hispanic	8.7%	3,998
Asian, NH	5.7%	1,195
Total	3.6%	20,195

Uninsured Children by Race/Ethnicity Anne Arundel County, 2019	
White, NH	2.1%
Black, NH	3%
Hispanic	7.3%

Source: *Kids Count Data Book, 2021*

What is the Achievement Gap? - 5th Grade

5th Grade Maryland Comprehensive Assessment Program (MCAP) English Language Arts Percent Proficient, Anne Arundel County, 2019	
Race/Ethnicity	Percent
Overall	51.5%
Black	31.9%
Hispanic	36.7%
White	63.1%

Maryland State Department of Education, Maryland Report Card 2021
MCAP English Language Arts: Core Maryland standards based literacy assessment

5th Grade Maryland Comprehensive Assessment Program (MCAP) Mathematics Percent Proficient, Anne Arundel County 2019	
Race/Ethnicity	Percent
Overall	36.6%
Black	16.6%
Hispanic	21.7%
White	48.5%

Maryland State Department of Education, Maryland Report Card 2021

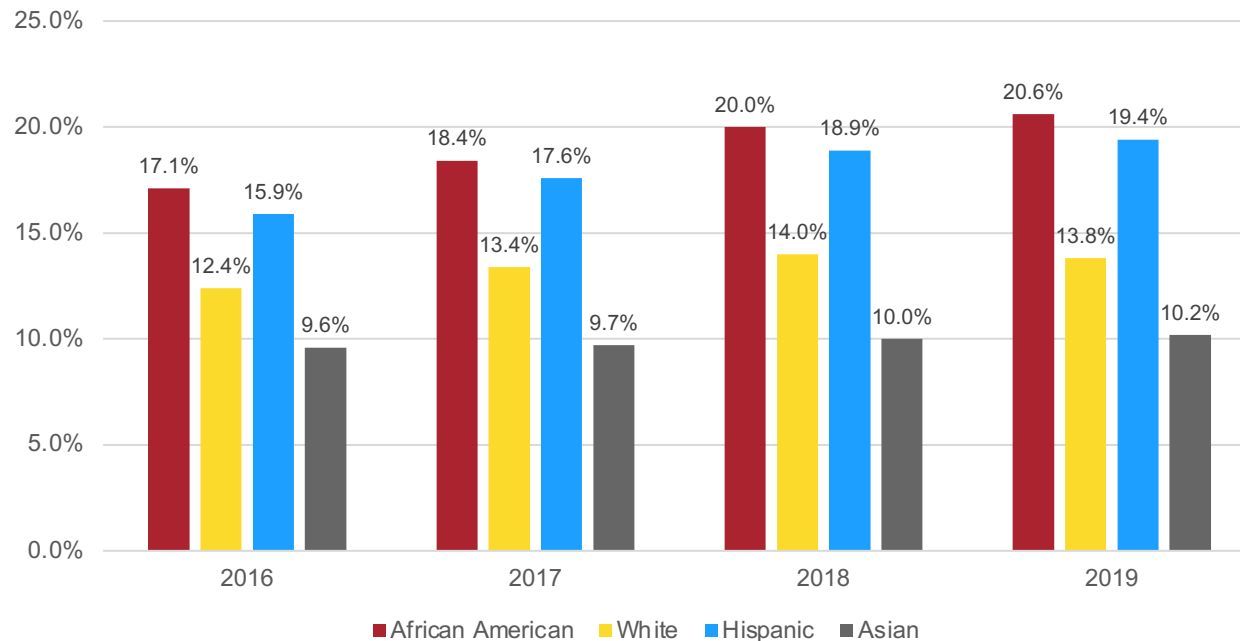
What is the Achievement Gap - 8th Grade?

8th Grade MCAP English Language Arts Percent Proficient, 2019	
Race	Percent
Overall	48.9%
Black	28.3%
Hispanic	30.6%
White	60%
Source: Maryland State Department of Education, Maryland Report Card 2021	

8th Grade MCAP Math Percent Proficient, 2019	
Race	Percent
Overall	11.9%
Black	5%
Hispanic	5.8%
White	19%
Source: Maryland State Department of Education, Maryland Report Card 2021	

Anne Arundel County Chronic Absences by Race and Ethnicity, 2016-2019

Chronic Absenteeism Rate for Anne Arundel County Public Schools by Race/Ethnicity, 2016-2019

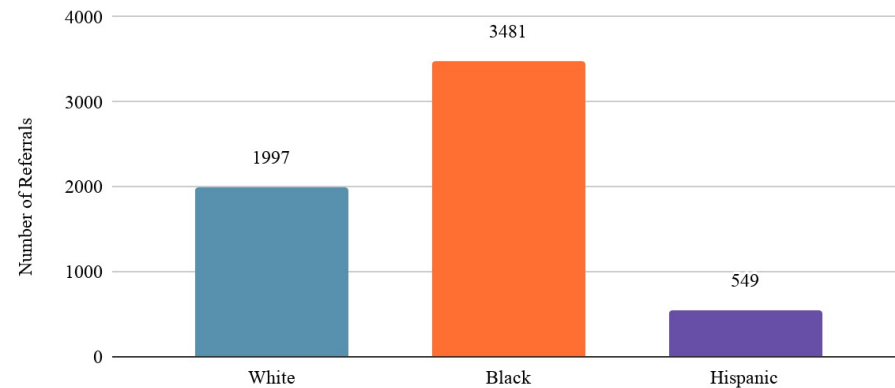


Chronic Absenteeism Rate for Anne Arundel County Public Schools by Race/Ethnicity, 2016-2019				
	2016	2017	2018	2019
African American	17.1%	18.4%	20.0%	20.6%
White	12.4%	13.4%	14.0%	13.8%
Hispanic	15.9%	17.6%	18.9%	19.4%
Asian	9.6%	9.7%	10.0%	10.2%

Source: Maryland Department of Education Report Card

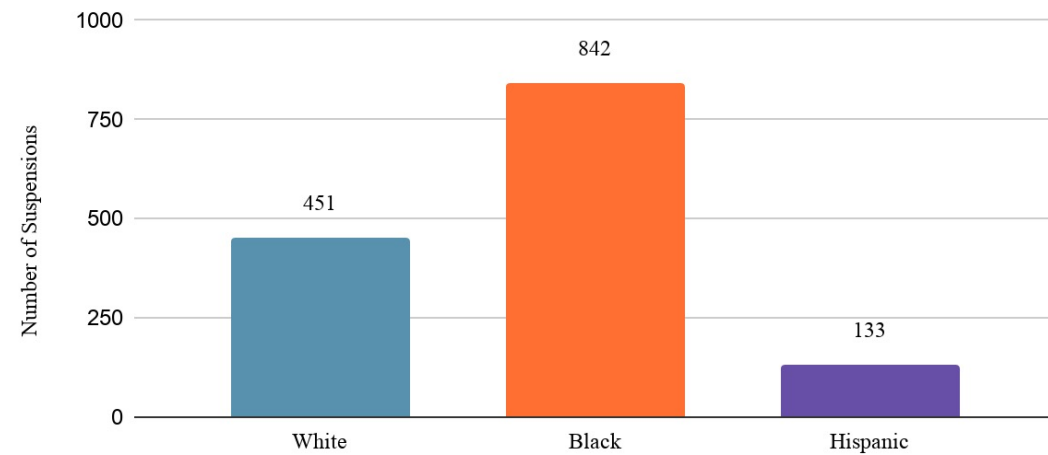
Elementary School Discipline Anne Arundel County Public Schools

Elementary School Referrals by Race, Anne Arundel County Public Schools, School Year 2018-2019



Source: Anne Arundel County Public Schools

Elementary School Suspensions by Race, Anne Arundel County Public Schools, School Year 2018-2019



Source: Anne Arundel County Public Schools

AACPS School Arrests

School Arrests, Anne Arundel County School Year 2018-2019	
White - 51.6% of School Population	103
Black - 21.2% of School Population	193
Hispanic - 17.2% of School Population	45
Source: 2021 Kids Count Data Book	

Youth Unemployment Rates by Race and Ethnicity State of Maryland, 2019

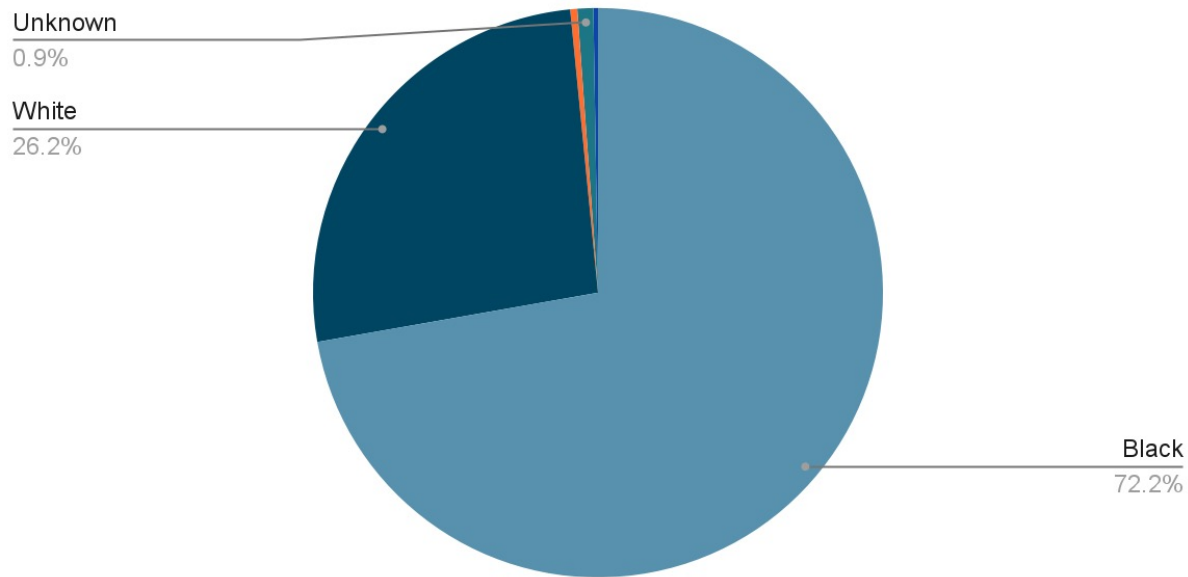
			Youth Unemployment Rate, Maryland, 2010-2019										
			2010	2011	2012	2013	2014	2015	2016	2017	2018	2019	
Race/Ethnicity	Black, non-Hispanic	Number	14000	13000	12000	12000	11000	8000	7000	8000	9000	10000	
		Percent	12%	12%	12%	11%	12%	8%	7%	8%	9%	10%	
	Hispanic	Number	3000	2000	2000	2000	3000	3000	2000	2000	2000	3000	3000
		Percent	9%	8%	7%	5%	10%	7%	7%	4%	7%	7%	
	White, non-Hispanic	Number	11000	8000	9000	9000	8000	7000	8000	6000	5000	6000	6000
		Percent	7%	5%	6%	6%	5%	5%	5%	5%	7%	5%	

Maryland Department of Labor, 2020

Maryland Inmate Population, by Race, 2020

Sentenced Populations Demographics, 2020

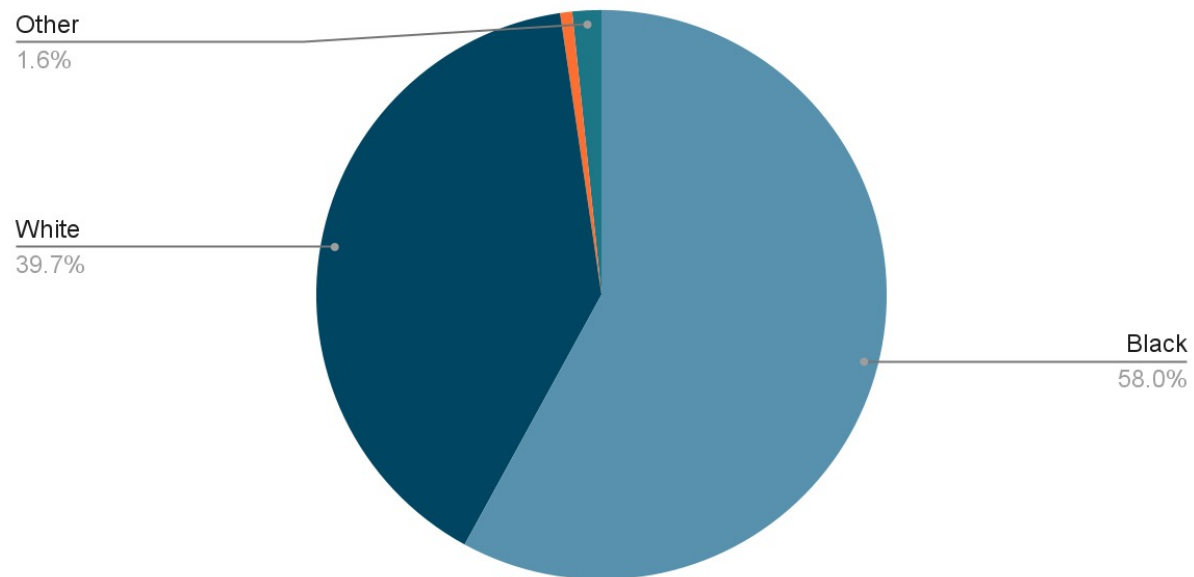
Source: FY2020 Population Overview, DOC Inmate Demographics



FY 2020 Population Overview, DOC Inmate Demographics

Community Supervision by Race, 2020

Source: Division of Parole and Probation FY2020 Population Overview



Division of Probation and Parole, FY 2020 Population overview

THANK YOU!

If you would like to join our Communities of Hope, please email:

Mizetta Wilson, Communities of Hope Director at srwils00@aacounty.org

If you have questions about this presentation, please email:

Pam Brown, Executive Director, at srbrow00@aacounty.org