



## ***The dolly family***



[www.cinetech.it](http://www.cinetech.it)

## ***OUR GOAL***

IS TO CREATE THE BEST CAMERA DOLLIES THAT CAN BE A PERFECT SUPPORT TO YOUR PROFESSIONALISM!

---

Cinetech Italiana S.r.l.  
Via Del Casale Ferranti  
27/29 - 00173 Rome (Italy)

Phone: +39-067211804  
Fax +39-067222157

[www.cinetech.it](http://www.cinetech.it)  
e-mail: [falcon@cinetech.it](mailto:falcon@cinetech.it)



## *CONTENT*

Introduction	4-5
Super Falcon II	6-9
Super Falcon II - Electronic and Hydraulic	10-13
Super Hawk II	14-17
Sea Gull Dolly	18-21
T-Dolly	22-25
New accessories	26



**SIMPLICITY      PRECISION      QUALITY      RELIABILITY**

Our company **Cinetech Italiana s.r.l.** is well-known world-wide and has an internationally proven reputation in manufacturing of the professional camera dollies. Our plant is based in Rome and from here we are exporting our dollies all over the world. At the moment we are present in the **35 countries**, where we manage to guarantee the technical and commercial assistance in 48 hours.

Our company is constantly developing and is following the fast-moving changes in the movie industry. Today **Cinetech Italiana s.r.l.** can offer the new-generation gear-base dollies which can satisfy the needs of the most demanding operator or grip. Characterised by great **stability, manoeuvrability, manageability and versatility**, they require the absolute **minimum of maintenance**. They are engineered and designed with the latest technology in structural materials and surface finishes and are thoroughly tested to **guarantee a perfect operation**.

All components are made at our plant using the latest technologies in the mechanical industry. Cinetech's dollies are really resistant, that's why they can work under **any environmental condition**.

Today the market offers two main types of the dollies – with hydraulically – actuated arm and electronic centre column ones. In order to satisfy both needs we are introducing the new **electronic/hydraulic** dolly on the market today. It will combine both characteristics- will be operated both electronically or electrically/manually, using hydraulics.

# 10 REASONS WHY

*you should own Cinetech's dollies:*

**1** Electronic/Hydraulic versions in one dolly

**3** Incredible stability

**5** Unique versatility

**7** Very smooth and precise arm movement

**9** Resistant to any environmental condition

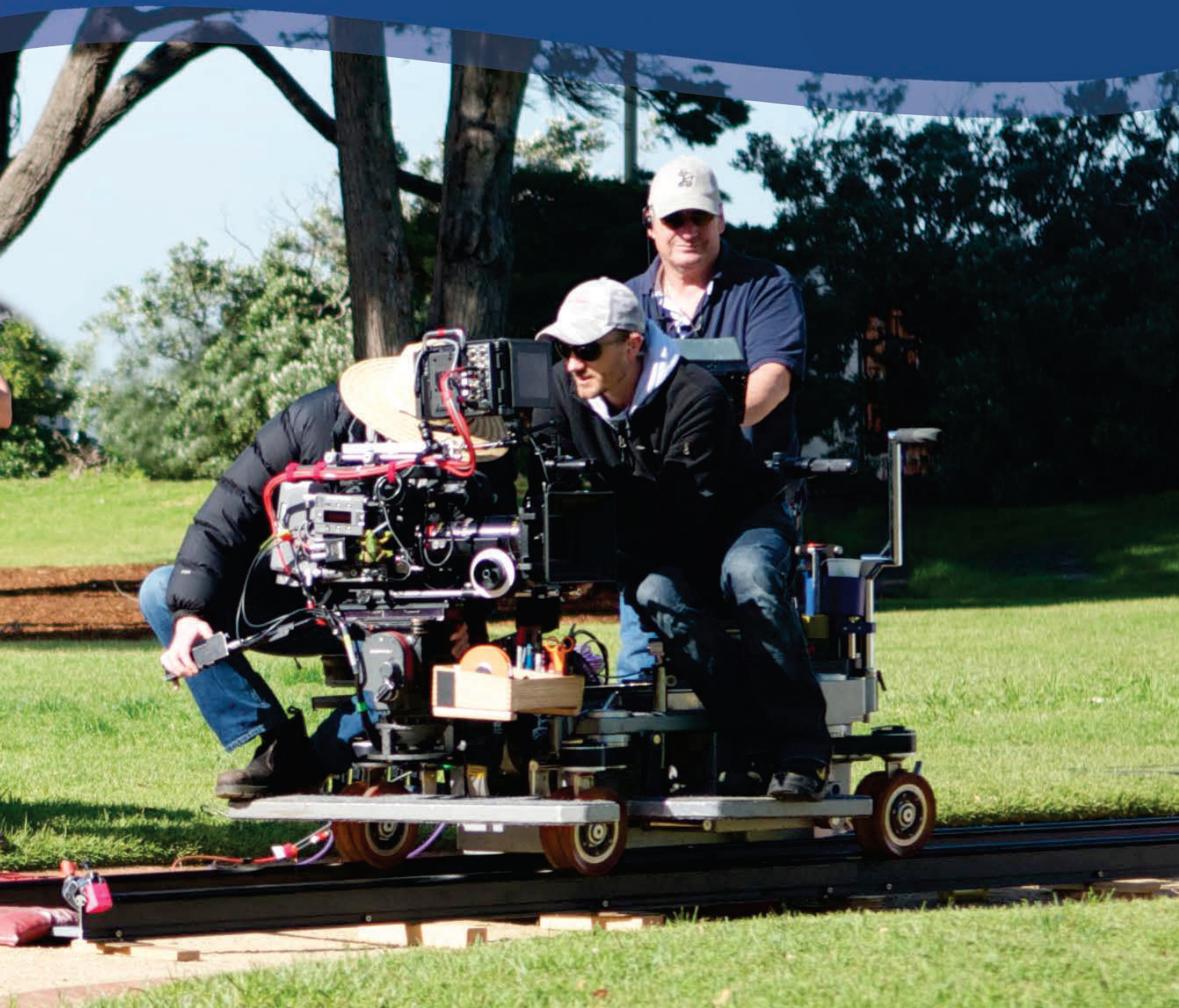
**2** All parts and accessories are made in stainless steel and are interchangeable

**4** Chainless steering box and small arms, so no need for adjustment

**6** Silent in operation

**8** 3-steering modes – CRAB, CONV, ROUND-AROUND (2 steering modes on request)

**10** Free 5-day technical/maintenance course at our plant





# Super Falcon II

Manufactured by Cinotech Italiana srl

SUPER FALCON II today is the best dolly for professional film makers. Characterized by great stability, manoeuvrability, manageability and versatility, it requires the absolute minimum of maintenance. Engineered and designed with the latest technology in structural materials and surface finishes, it is tested thoroughly to ensure an accurate and reliable operation.

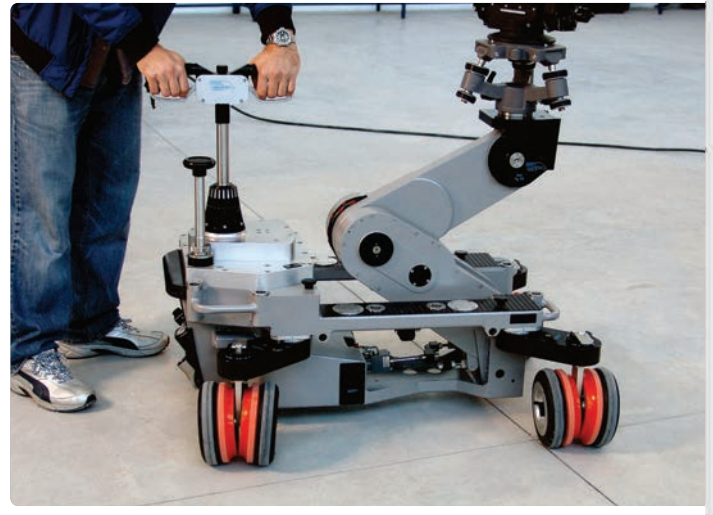


**SUPER FALCON II** today is the best dolly for professional film makers. Characterized by great stability, manoeuvrability, manageability and versatility, it requires the absolute minimum of maintenance. Engineered and designed with the latest technology in structural materials and surface finishes, it is tested thoroughly to ensure an accurate and reliable operation.

The **SUPER FALCON II** dolly is very resistant, so it guarantees its performance under every environmental condition.

Dolly can be equipped with two different types of wheels; the standard wheel of selected hardness may be used directly on the studio floor, or on any standard track; and mixed wheel incorporating the standard wheel along with an inflated rubber wheel, excellent flexibility and performance when used on whatever surface even if it is not completely smooth. Steering mode can be quickly changed from four wheel **"CRAB"** operation, into **"ROUND"** four-wheel steering and two wheel **"CONVENTIONAL"** operation or vice versa by simply twisting the steering bar handle. A very high tech gears steering is located between the rear wheels to facilitate this operation in the **"ROUND"** mode, avoiding friction.

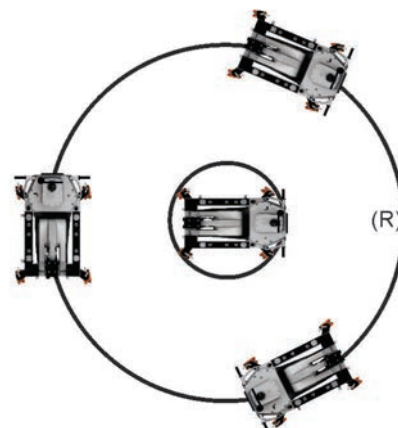
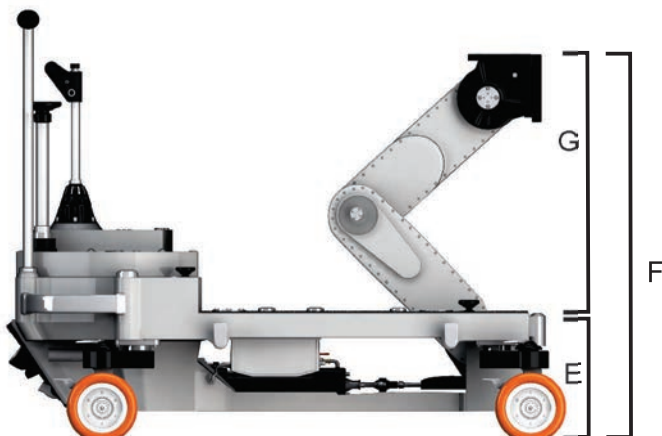
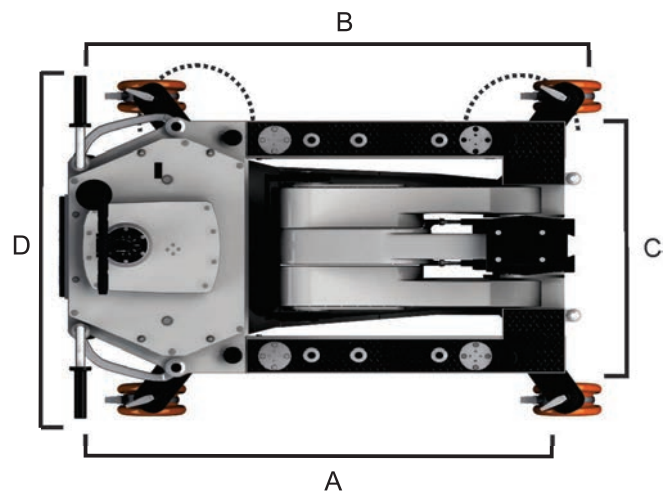
The steering column can be removed by unscrewing the threaded base ring and the transmission shaft. A simple release device, at the base of the column, locks the steering facilitating realignment of the wheels when this is necessary. The steering box is a gear-base one, so there is no need for adjustment of the chains.



The dolly's vertical lift maintains precise camera alignment during the whole run of the arm. It is possible to mount the 90° Accessory plate on the mounting plate, so operator can work in the very low positions. Pressure accumulator may be recharged manually (by removing the control bar and inserting it in the manual pump and pumping), or electrically (the pump motor is connected to the main power by a supplied cable and activated by an ON/OFF switch). The motor automatically stops when it reaches the preselected pressure. A special device, in both cases, prevents any damage by over pressurizing. Dolly is equipped with a new kind of piston that embodies an end run "dashpot".

Min. length (A):	38 in - 96 cm
Max length (B):	43 in - 110 cm
Min. width (C):	20,4 in - 52 cm
Max width (D):	24,5 in - 62 cm
Min. Height (E):	16,5 in - 42 cm
Max Height (F):	46 in - 117 cm
Travel (G):	28,3 in - 72 cm

Turn Radius (R):	0 - ∞
Power supply:	220V - 110V / 50Hz - 60Hz
Usable track gauge:	24,4 in - 62 cm
Lifting capacity:	131 lbs - 60 kg
Min. working P:	1305 psi - 90 bar
Max working P:	2755 psi - 190 bar
Maximum arm lifts:	6
Weight:	280lbs - 140kg



# Super Falcon II Accessories

Manufactured by Cinotech Italiana srl

CODE	EQUIPMENT	Qty
100001	leveling head	01
100002	6" camera riser	01
100003	12" camera riser	01
100004	bolt and washer	02
100005	90° accessory plate	01
100006	seat riser	02
100007	push bar	02
100008	small board	01
110100	battery support	01
110101	central board	01
100009	solid/pneumatic wheels	08
100010	long camera extension	01
100012	short camera extension	01
100013	flight case for accessories	01
110102	flight case for SUPER FALCON	01
110103	kit low board	01



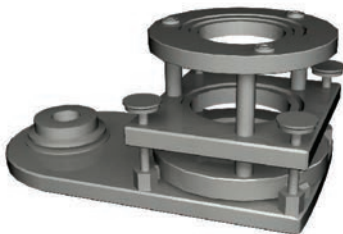
140006



100010



100012



100001



100003



100002



100005



140009



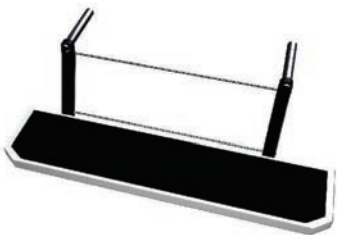
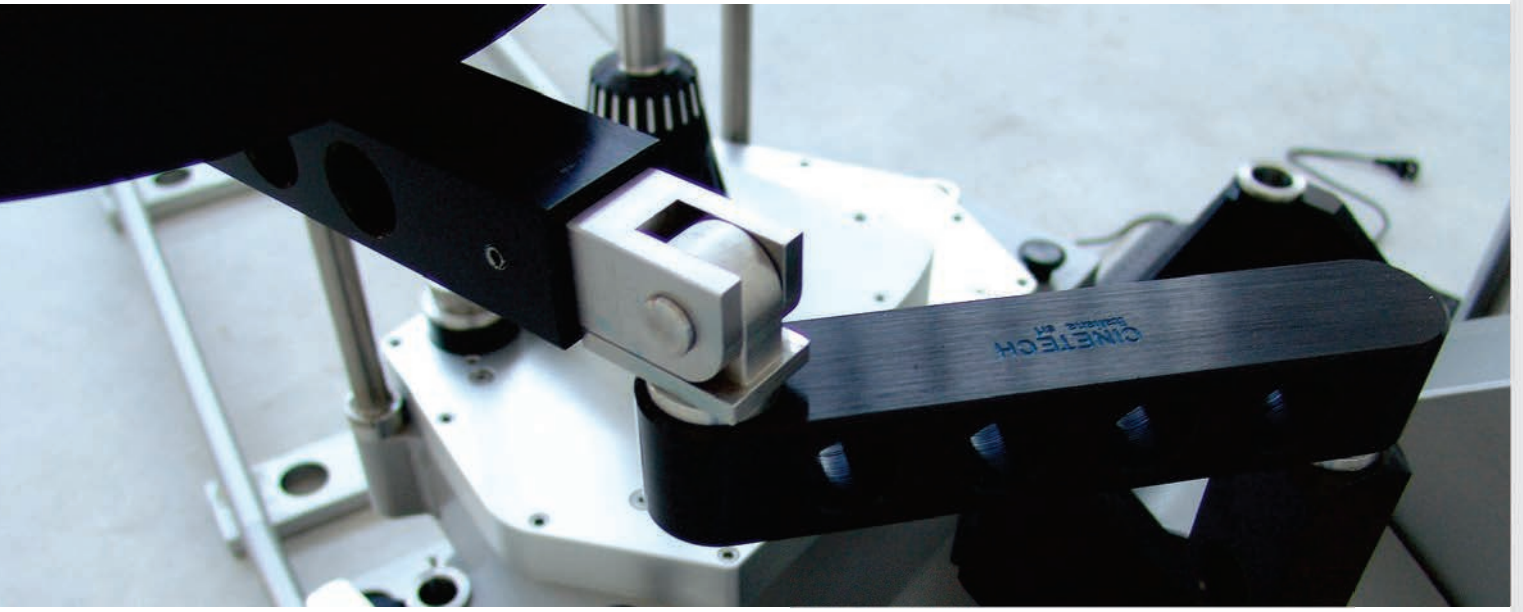
100006



all the accessories for Super Falcon II and Super Hawk II are interchangeable and are made of stainless steel.

140006 - Bazooka attachment, 140009 - Seat, 100006 - Seat Riser, 100007 - Push bar are identical to all our models.





110103



110100



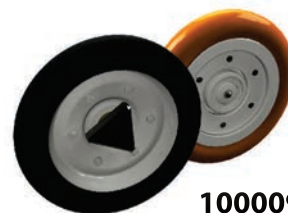
110101



10007



100008



100009

# Super Falcon II

ELECTRONIC and HYDRAULIC

Manufactured by Cinetech Italiana srl

The new **Electronic/Hydraulic Super Falcon II** dolly is the latest invention of the Cinetech Italiana s.r.l. that allows the operator to express all his professionalism and creativity. Memorise any amount of steps, choose the speed of the movement or control the arm movement classically using the incredibly sensitive joystick.



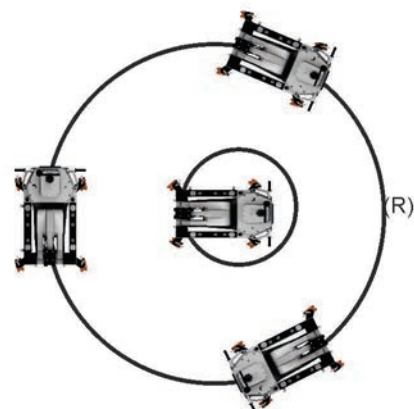
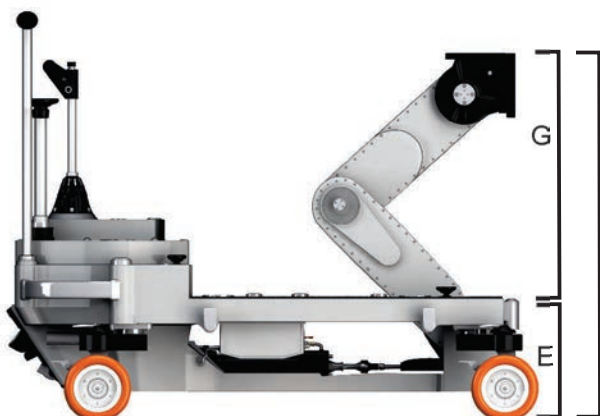
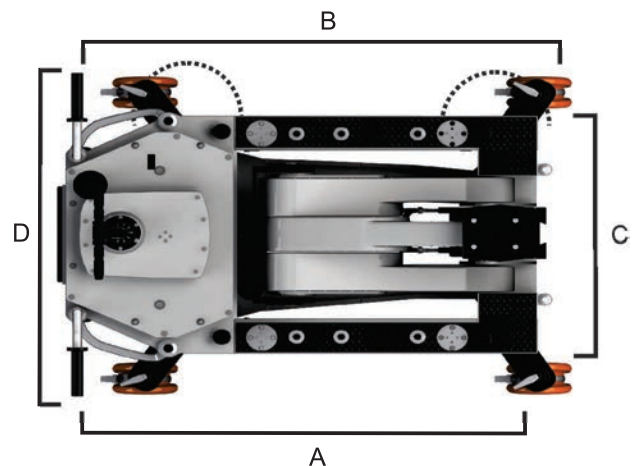
The new **Electronic/Hydraulic Super Falcon II** dolly is the latest invention of the Cinetech Italiana s.r.l. that allows the operator to express all his professionalism and creativity. This dolly will permit the user to memorise a lot of sequences, where the operator pushes one button and is able to choose where to stop the arm during booming up or down and can return to the same positions any time he wants.

In fact, it is possible to memorise any amount of steps in any sequence as well as the positions where the arm will stop. It is possible to choose the speed of the movement between one step or another or to control the arm movement classically using the incredibly sensitive joystick. This new dolly is genuinely precise and versatile thus it can satisfy all needs of even most demanding operators.



Min. length (A):	38 in - 96 cm
Max length (B):	43 in - 110 cm
Min. width (C):	20,4 in - 52 cm
Max width (D):	24,5 in - 62 cm
Min. Height (E):	16,5 in - 42 cm
Max Height (F):	46 in - 117 cm
Travel (G):	28,3 in - 72 cm

Turn Radius (R)	0 - ∞
Power supply:	220V - 110V / 50Hz - 60Hz
Usable track gauge:	24,4 in - 62 cm
Lifting capacity:	131 lbs - 60 kg
Min. working P:	1305 psi - 90 bar
Max working P:	2755 psi - 190 bar
Maximum arm lifts:	6
Weight:	300lbs - 150kg



# Super Falcon II ELECTRONIC and HYDRAULIC Accessories

Manufactured by Cinetech Italiana srl

CODE	EQUIPMENT	Qty
100001	leveling head	01
100002	6" camera riser	01
100003	12" camera riser	01
100004	bolt and washer	02
100005	90° accessory plate	01
100006	seat riser	02
100007	push bar	02
100008	small board	01
110100	battery support	01
110101	central board	01
100009	solid/pneumatic wheels	08
100010	long camera extension	01
100012	short camera extension	01
100013	flight case for accessories	01
110102	flight case for SUPER FALCON	01
110103	kit low board	01



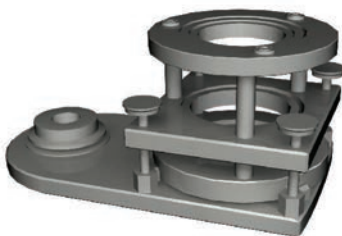
140006



100010



100012



100001



100003



100002



100005



140009

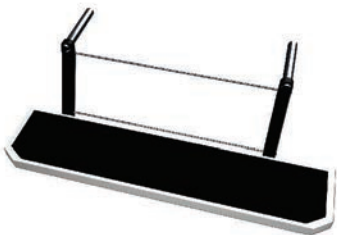
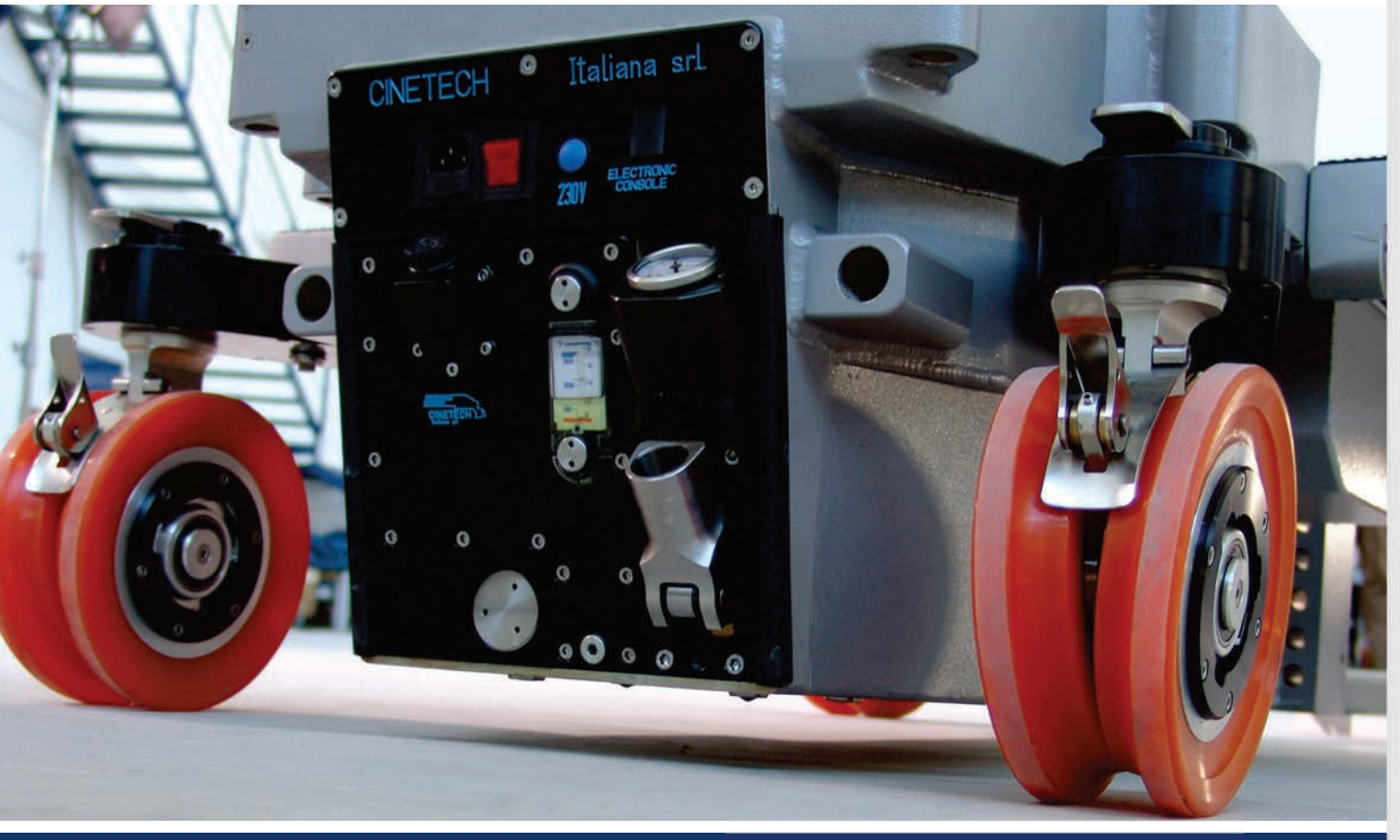


100006



all the accessories for Super Falcon II and Super Hawk II are interchangeable and are made of stainless steel.

140006 - Bazooka attachment, 140009 - Seat, 100006 - Seat Riser, 100007 - Push bar are identical to all our models.



110103



110100



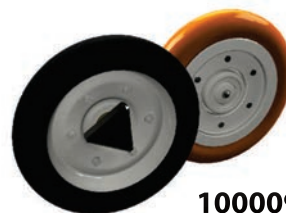
110101



100007



100008



100009



# Super Hawk II

Manufactured by Cinetech Italiana srl

**SUPER HAWK II** today is the best dolly for professional film makers. Characterized by great stability, manoeuvrability, manageability and versatility, it requires the absolute minimum of maintenance. Engineered and designed with the latest technology in structural materials and surface finishes, it is tested thoroughly to ensure an accurate and reliable operation. **The SUPER HAWK II** dolly is very resistant, so it guarantees its performance under every environmental condition. Dolly can be equipped with two different types of wheels; the standard wheel of selected hardness may be used directly on the studio floor, or on any standard track; and mixed wheel incorporating the standard wheel along with an inflated rubber wheel, excellent flexibility and performance when used on whatever surface even if it is not completely smooth.



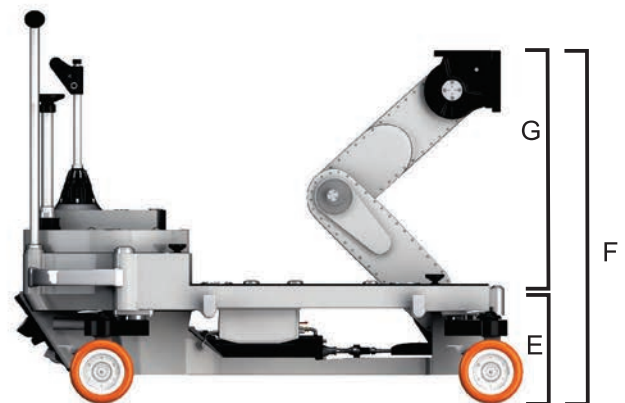
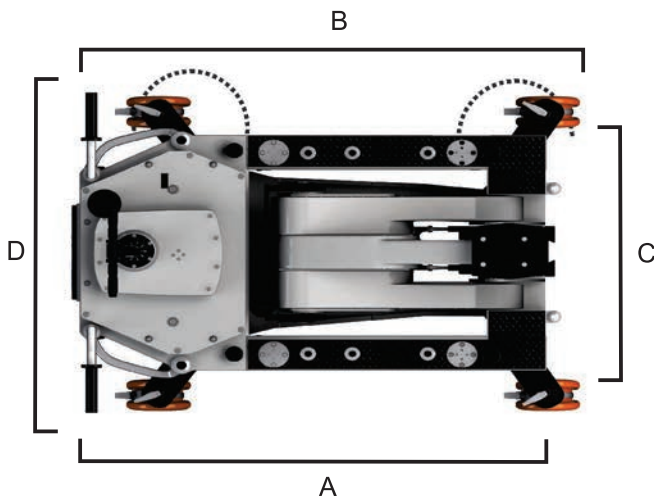
Steering mode can be quickly changed from four wheel "CRAB" operation, into "ROUND" four-wheel steering and two wheel "CONVENTIONAL" operation or vice versa by simply twisting the steering bar handle. A very high tech gears steering is located between the rear wheels to facilitate this operation in the "ROUND" mode, avoiding friction. The steering column can be removed by unscrewing the threaded base ring and the transmission shaft. A simple release device, at the base of the column, locks the steering facilitating realignment of the wheels when this is necessary. The steering box is a gear-base one, so there is no need for adjustment of the chains.



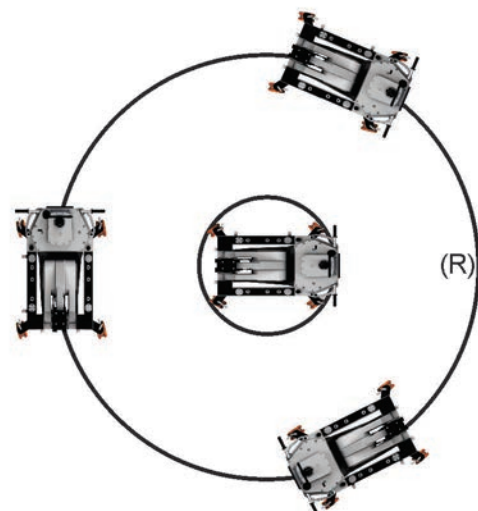
The dolly's vertical lift maintains precise camera alignment during the whole run of the arm. It is possible to mount the 90° Accessory plate on the mounting plate, so operator can work in the very low positions. Pressure accumulator may be recharged manually (by removing the control bar and inserting it in the manual pump and pumping), or electrically (the pump motor is connected to the main power by a supplied cable and activated by an ON/OFF switch). The motor automatically stops when it reaches the preselected pressure. A special device, in both cases, prevents any damage by over pressurizing. Dolly is equipped with a new kind of piston that embodies an end run "dashpot".

Min. length (A): 41 in - 105 cm  
 Max length (B): 50 in - 125 cm  
 Min. width (C): 28 in - 59 cm  
 Max width (D): 36 in - 91 cm

Min. Height (E): 18 in - 46 cm  
 Max Height (F): 49 in - 126 cm  
 Travel (G): 32 in - 80 cm



Turn Radius (R) 0 - ∞  
 Power supply: 220V - 110V / 50Hz - 60Hz  
 Usable track gauge: 24,4 in - 62 cm  
 Lifting capacity on the head: 175 lbs - 80 kg  
 Two people on the arm: 218 lbs - 100 kg (each)  
 Min. working P: 1450 psi - 100 bar  
 Max working P: 2900 psi - 200 bar  
 Maximum arm lifts: 5  
 Weight: 362 lbs - 165 kg  
 Charge time in electronic mode: 65sec



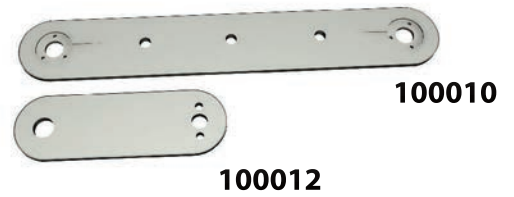
# Super Hawk II Accessories

Manufactured by Cinetech Italiana srl

CODE	EQUIPMENT	Qty
100001	leveling head	01
100002	6" camera riser	01
100003	12" camera riser	01
100004	bolt and washer	02
100005	90° accessory plate	01
100006	seat riser	02
100007	push bar	02
100008	small board	01
120101	central board	01
100009	solid/pneumatic wheels	08
100010	long camera extension	01
100012	short camera extension	01
100013	flight case for accessories	01
120102	flight case for SUPER HAWK	01
120103	kit low board	01

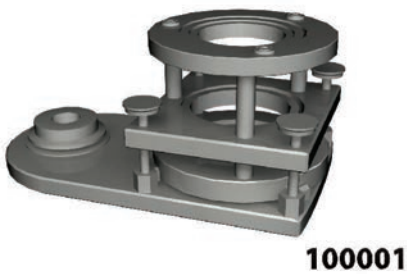


140006



100010

100012



100001



100003

100002



100005



140009



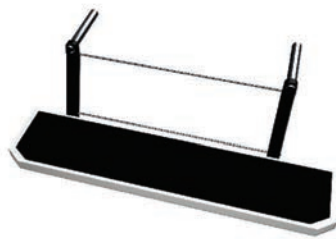
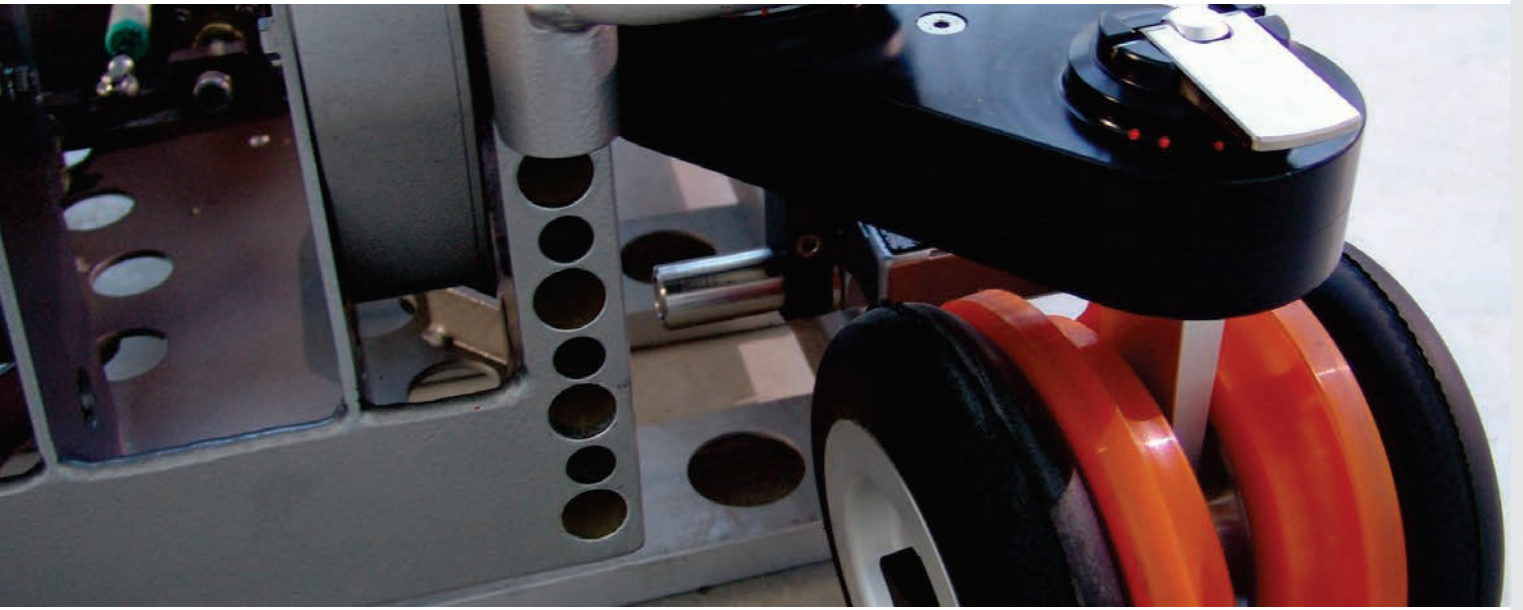
100006



all the accessories for Super Falcon II and Super Hawk II are interchangeable and are made of stainless steel.

140006 - Bazooka attachment, 140009 - Seat, 100006 - Seat Riser, 100007 - Push bar are identical to all our models.





120103



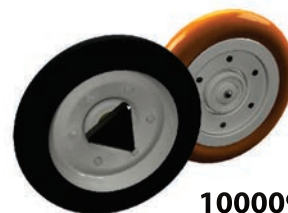
120101



100007



100008



100009



**Sea Gull** is the new product of Cinotech Italiana s.r.l. This dolly is a hydraulic arm that can be mounted on a stable and light flat platform.



**Sea Gull** is a fruit of our twenty year experience in field of professional camera dolly manufacturing. This little dolly can support standard cameras operating it either on the track or with pneumatic wheels.

**Sea Gull** arm is built to be easy in maintenance and the incredible 30 Kg weight is a key benefit for those grips who are looking for a stable and professional product easy to carry on. Assembly and disassembly can be made in few minutes, thus saving time for the professionals on set. It can be operated without the platform, allowing the operator to use it in the narrow spaces.

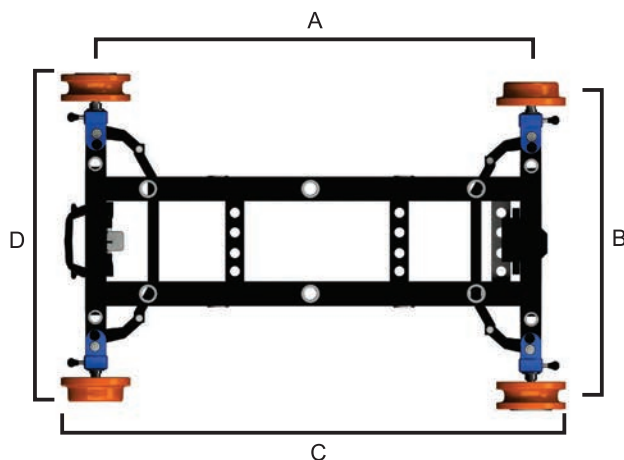


## Arm

Power Supply:	Battery 24V	
Lifting capacity:	30 Kg	66 lbs
Arm lifts:	6	
Charge time:	45 sec.	
Weight:	33 Kg	72.6 lbs
Max Height:	A 92 cm	36,22 in
Min Height:	B 27 cm	10,61 in
Arm Travel:	65 cm	25.60 in

## Platform

Length:	A 90 cm	35.40 in
	C 110 cm	43.30 in
Width:	D 69 cm	27.16 in
Height:	E 19,5 cm	7,80 in
Track gauge:	B 62 cm	24,40 in
Weight:	30 Kg	66 lbs



**Sea Gull**  
**Accessories**  
 Manufactured by Cinetech Italiana srl

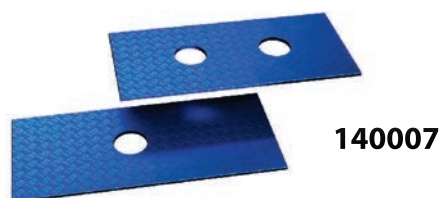


**Swivel** is our brand new accessory. It allows two operators to seat close to the camera and to move around with the camera.

**Steering bar** angle position is adjustable with a fast system lock.

**Seagull's seats** are made with interchangeable brackets. This novelty helps to place the seats in the most comfortable position for the operator.

CODE	EQUIPMENT	Qty
140001	Seagull Arm	01
140002	Seagull Platform	01
140003	Pneumatic Wheels set	04
140004	Low Mode Kit	01
140005	Side Board	02
140006	Bazooka Attachment	01
140007	Plate for Jib Mode	01
140008	Boom Handle	01
140009	Seat	02
140010	Push Bar	01
140011	Battery 24V	01
140012	Battery Charger	01
140013	Rigid Wheels	04
140014	Swivel	01
100006	Seat riser	02



**NOTE:**

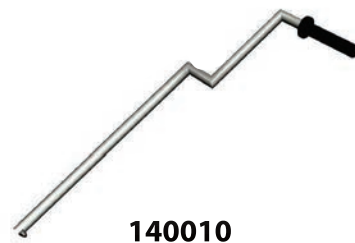
140013 - T-DOLLY RIGID TRACK WHEELS ARE IDENTICAL TO THE SEAGULL RIGID WHEELS.

Identical for all our models:  
 140006 - Bazooka attachment  
 140009 - Seat  
 100006 - Seat Riser  
 100010 - Push bar



**Pneumatic wheels** Pneumatic wheels are supplied in order to ease up the movement of the Seagull on the uneven surface, making the travel smooth and steady.

**Hard wheels** have a particular shape – fruit of the efforts of our technical department. Those are mounted in the diagonal position on the flat platform, thus allowing the professional to use the Seagull on both straight & curved track. Important thing is that the friction is minimised.





# T-Dolly

Manufactured by Cinotech Italiana srl

**T-Dolly** is the new product of Cinotech Italiana s.r.l. This dolly is a stable and light flat platform made for narrow spaces.



***Always the Take-off in the right Direction!***

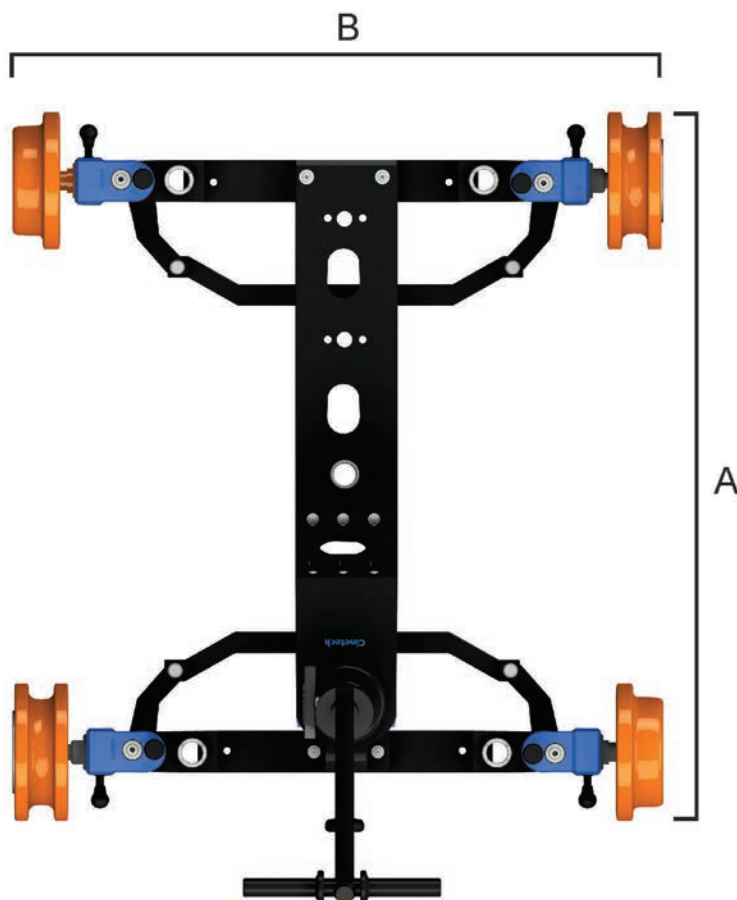


**T-Dolly** is a fruit of our twenty year experience in the field of professional camera dolly manufacturing. This little dolly can support standard cameras, operating it either on the track (straight or curved) or with pneumatic wheels.

**T-Dolly** can be used either with three wheels, or with four. The three wheels feature was designed for entering in the narrow spaces, while four wheels guarantee more stability to the dolly.

**T-Dolly** boasts to be light as a weight, but also as a cost for those who want to have a reliable, but at the same time inexpensive product.

**T-Dolly** is built to be easy in maintenance and the incredible 30 Kg weight is a key benefit for those grips who are looking for a stable and professional product easy to carry on. Assembly and disassembly can be made in few minutes, thus saving time for the professionals on set.



Length: 87,5cm - 34,45 in  
(A) 110 cm - 43,30 in

Width: 72 cm - 28,30 in  
Height: (B) 62 cm - 24,40 in

Track gauge: (B) 62 cm - 24,40 in  
Weight: 30 kg - 66 lbs

# T-Dolly Accessories

Manufactured by Cinetech Italiana srl

CODE	EQUIPMENT	Qty
150001	T-Dolly tracks adapter kit	01
150002	Rigid track wheels	04
150014	Swivel	01
100006	Seat riser	02
100007	Push Bar	02
140003	Pneumatic wheels set	04
140006	Bazooka Attachment	01
140008	Boom handle	01
150000	Side board	02
140009	Seat	02

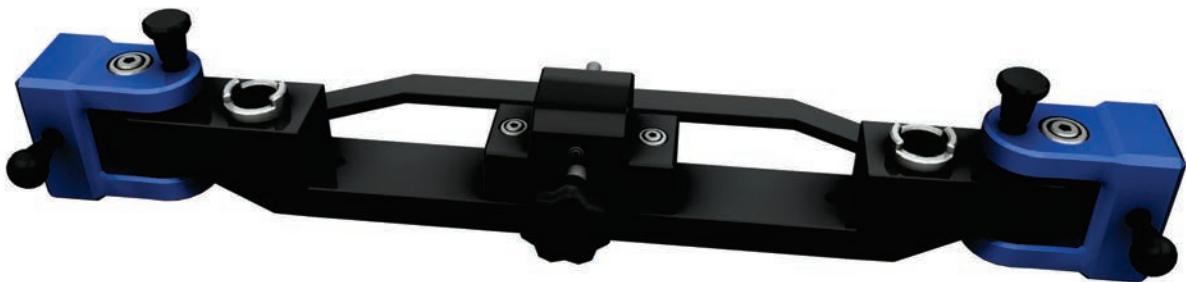
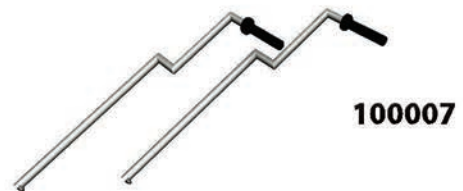
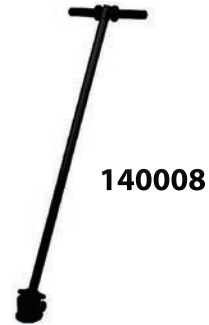


140013 - T-DOLLY RIGID TRACK WHEELS ARE IDENTICAL TO THE SEAGULL RIGID WHEELS.

Identical for all our models:  
 140006 - Bazooka attachment  
 140009 - Seat  
 100006 - Seat Riser  
 100007 - Push bar







# New accessories



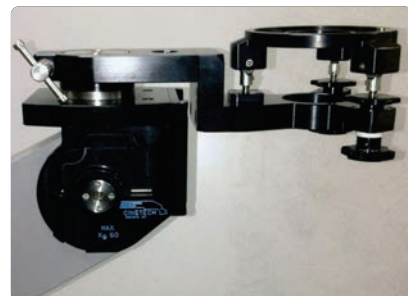
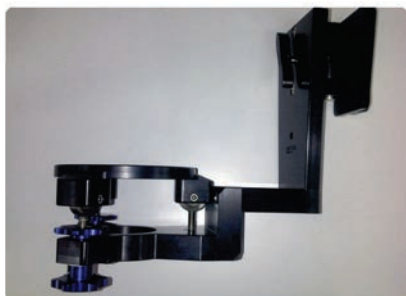
Levelling heads are identical for all our models

Manufactured by Cinetech Italiana srl



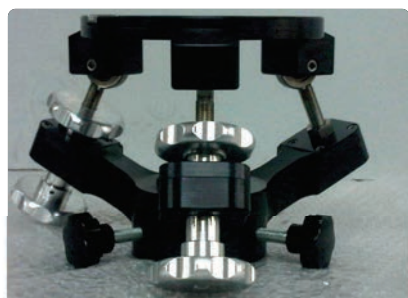
## LOW POSITION LEVELLING HEAD / 100021

This is a new levelling head, which is an improved version of traditional one. It allows the camera to go very low and can be adjusted in two positions. (Traditional ones can be adjusted in three positions). This feature enables the camera, which is mounted on the head to be more stable and precise, avoiding the free play.



## LEVELING HEAD MAXI / 100022

Levelling head is adjustable in two positions. This feature enables the camera, which is mounted on the head to be more stable and precise, avoiding the free play.



## OFF-SET BALL ADAPTER 150mm / 100023



  
**Cinetech**  
Italiana srl



Cinetech Italiana S.r.l.  
Via Del Casale Ferranti  
27/29 - 00173 Rome (Italy)

Phone: +39-067211804  
Fax +39-067222157

e-mail: [falcon@cinetech.it](mailto:falcon@cinetech.it)

[www.cinetech.it](http://www.cinetech.it)