

studios and lofts

ONE ROOM LIVING

Marcos Nestares



UNIVERSE

NEW YORK sjoberg residence

| | |
|--------------|---|
| LOCATION | New York City, New York, United States |
| SURFACE AREA | 559.52 sq. ft. |
| ARCHITECT | Abigail Shachat, AJS Design/s |
| DATE | 2001 |
| PHOTOGRAPHER | Bjorg |

From the access area, separated by a light steel railing, the living room, with an incorporated fireplace, dominates. The furnishings were selected to suit a comfortable and relaxed environment. The bedroom, separated by a partition, does not lose its permeability because it is linked to the exterior by a window on the upper floor.

The young thirty-year-old professional who owns this apartment wanted to obtain a contemporary space that would reflect his personal lifestyle in his first apartment.

Aided by a total height of almost 16.40 ft., this unique apartment is developed into three floors, all of which are visually related. The middle floor that provides access to the kitchen and dining room also incorporates a bathroom. The living room area is located on the lower floor, and the upper floor is made up of the bedroom, bathroom, and dressing room. All of these areas are connected and form a whole in which the rooms can be perceived from any point. From the access, the living room, bedroom, and kitchen can be made out with a glance. At the same time, the hall and living room area can be seen from the kitchen on the lower floor and visitors can be seen at the apartment's entrance from a wide window in the bedroom.

The two flights of stairs unite all the rooms, emphasizing the sense of connection and vertical movement. With a unique design, this stairway constitutes a point of union between the different areas.

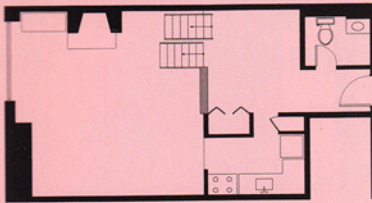
The furniture adds a second layer to the architecture, chosen for its comfort, simplicity, and for not obstructing vision from any point—a generating element of the design.



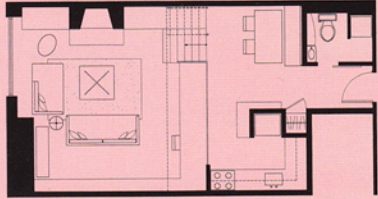
The meticulous details of the furnishings and complements dot all of the rooms. The furniture combines functionality with a pleasant and elegant design.



ENTRY-LEVEL FLOOR PLAN BEFORE ALTERATIONS



ALTERED ENTRY-LEVEL FLOOR PLAN

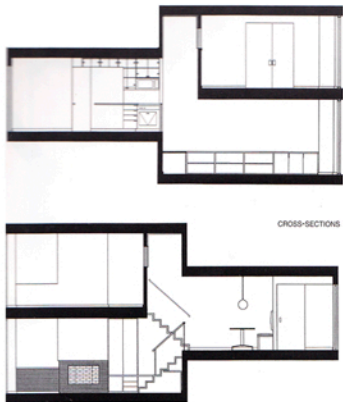


The alteration of this apartment was made subtly through the elimination of elements such as partitions and closets; therefore obtaining one space fragmented in three heights. The entry level, formed by the bathroom and kitchen, was separated from the lower living room by a light railing, leaving the whole space integrated.

Under the kitchen, making the most of the recess of the upper floor's volume, a study table is placed longitudinally in front of the living room from where the kitchen can also be made out.

The two flights of stairs, as the apartment's main feature, were designed with pieces of wood that show how it connects the rooms. The way it is dealt with also relates to how the rooms are united: massive on the lower part for the apartment's public area and lofty on the upper part like a bridge of union to the bedroom—the most private room of the apartment.





CROSS-SECTIONS

The cross-section is the best representation for perceiving a space with these characteristics. In this, the bedroom block, situated on the upper floor, is set in place in respect to the entry-level floor to visually increase the space and take in the nucleus of the stairway.

The bathroom was made with great aesthetic skill, selecting indirect lighting and elegant and functional bathroom fittings.



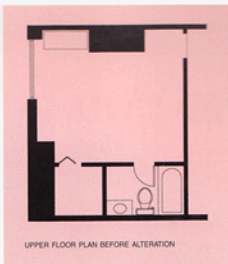
In the kitchen, located in the corner, there are two areas: one visible from the access and the living room, and another more protected area for preparing food.

The wall-to-wall carpet and the treatment of the windows and closets favor the feel of a secluded and relaxed environment, contrasting with the spaciousness of the other rooms.



A face of windows that offers both permeability and privacy visually connects the upper floor, which takes in the most private area of the bedroom and dressing room.

There is a wide window without woodwork above the bed that offers a vision of the entry area. Sliding panels that make the area more spacious substituted the doors to the dressing room and bathroom.



UPPER FLOOR PLAN BEFORE ALTERATION



ALTERED UPPER FLOOR PLAN

