

BERT SELEN

AWARDS

BMI TV MUSIC AWARD

Raven's Home (Disney Channel) 2018

BMI TV MUSIC AWARD

K.C. Undercover (Disney Channel) 2015

BMI TV MUSIC AWARD

Rules of Engagement (CBS/Sony) 2013

BMI TV MUSIC AWARD

Rules of Engagement (CBS/Sony) 2012

BMI TV MUSIC AWARD

Rules of Engagement (CBS/Sony) 2009

TELEVISION SERIES

RULES OF ENGAGEMENT

Happy Madison/CBS/Sony
Season 3-7 (Score & End Credits)
Season 2 (Additional Music)

Tom Hertz & Doug Robinson, exec. prods.
David Spade, Patrick Warburton, Oliver Hudson
Megyn Price, Bianca Kajlich, Adhir Kalyan

POWER RANGERS COSMIC FURY

Netflix/Hasbro
Season 30 "Mighty Morphin Power Rangers"
Series + Original Theme Song

Simon Bennett, exec. prod.

POWER RANGERS DINO FURY

Netflix/Nickelodeon/Hasbro
Season 28 & 29 "Mighty Morphin Power Rangers"
Series + Theme Song

Simon Bennett, exec. prod.

FAST LAYNE

Disney Channel/Disney+/Lakeshore Ent

Travis Braun, Tom Burkhard, Matt Dearborn, exec. prods.

RAVEN'S HOME

Disney Channel/Disney+
Season 1-2

Raven Simone
Jed Elinoff & Scott Thomas, exec. prods.
Dava Savel, Michael Feldman, exec. prods.

K.C. UNDERCOVER

Disney Channel/Disney+/Hulu
Season 1-2-3

Zendaya
Rob Lotterstein, exec. prod.

LAB RATS

Disney XD/Disney+
Season 1-2-3-4

Chris Peterson & Bryan Moore, exec. prods.

LAB RATS VS MIGHTY MED (Theme Song)

Disney XD/Disney+

Chris Peterson & Bryan Moore, exec. prods.

LAB RATS ELITE FORCE

Disney XD/Disney+

Chris Peterson & Bryan Moore, exec. prods.

MYSTERY GIRLS (Series & Theme Song)

ABC Family
Season 1

Shepard Boucher, Tim Marx, Tori Spelling, exec. prods.
Jenny Garth, exec. prod.

BILLION DOLLAR FRESHMEN (Pilot)

Disney XD/Disney+

Chris Peterson & Bryan Moore, exec. prods.

BERT SELEN

STAGE

PEEWEE HERMAN LIVE AT THE NOKIA THEATRE
Additional Music

PEEWEE HERMAN ON BROADWAY
Additional Music

MUSIC PLACEMENTS

NCIS: LOS ANGELES (CBS)
PARKS & RECREATION (NBC)
THE MENTALIST (CBS)
DANNY COLLINS (Trailer)
K.C. UNDERCOVER (DISNEY)
JERSEY SHORE (MTV)
SNOOKI & JWOW (MTV)
AMERICAN MUSIC AWARDS (E! Network)
FINDING CARTER (MTV)
AWKWARD (MTV)
GOSSIP GIRL (CW)
ON THE ROAD IN AMERICA
ANTE UP, 2008
WALK LIKE A MAN, 2008
SAINTS AND SINNERS, SHOWDOAN AT THE VERONA 2007
AMERICAN HEIRESS – LION KING, 2007
WATCH OVER ME - TRUTH OR CONCEQUENCES, 2007

FILM

BIRDS OF A FEATHER	Director: Anthony Meindl
PREGNANT WITH DOUBT (Short)	Director: Ahmet Elez
READY? OK! (Theme Song)	Director: Anthony Meindl

DOCUMENTARY

DROP, MY LIFE DOWNHILL (Original Music)	Director: Marc McCrudden
--	--------------------------

COMMERCIAL

X-Japan/Yoshiki Sankyo promotional trailers Think Tank Commercial Reel Ecko Red	Vanessa Hudgens
--	-----------------

VIDEO GAMES

WET (2009)
Artificial Mind & Movement/Bethesda Softworks
Songs used

BERT SELEN

ALBUM WORK

Chloe Demore Side Effects	(Co-Written & Produced by)
Remzan Parkways Slipping Away	(Co-Written & Produced by)
SLN ft. Mike Canton Bury Me	(Written & Produced by)
SLN ft. Alke Making Waves	(Written & Produced by)
SLN ft. Kelsey Karrasch Rise Up	(Written & Produced by)
FIRE IN THE HAMPTONS F.I.T.H.	(Written & produced by)
FIRE IN THE HAMPTONS Girls in Drums	(Written & produced by)
VAN GUNN, Van Gunn	(Written & Produced by)
STEVIE ANN, With Open Arms	(Written & Produced by)
RELAX, Take These Wings	(Mixing)
ZEKE, Really Into You, 2010	(Engineer)
ANNEKE VAN GIERSBERGEN, Sunny Side Up, 2010	(Remix)
CARO EMERALD, A Night Like This, 2010	(Remix)
ENDLESS HALLWAY Autonomy Games, 2009	(Vocal Editing)
SONNY MOORE (Skrillex) Gypsyhook. EP 2009	(Vocal Editing)
CHOLERIC The Chosen, 2008	(Engineer/Editing)
FOUL PLAY Musiculous, 2007	(Producer, Co-Writing, Mixing)
GEORGE RITTER White desert light, 2008	(Producer, Musician, Mixing)
SARAH HETHCOAT Prosody EP, (Producer) 2008	(Drums)
CITY MUSEUM Motel, 2008	(Engineer)
THE NAKED The Naked, 2008	(Producer, Mixer)

BERT SELEN

COMMERCIALS

VERIZON

"Only Words"

Licensed for 12 different campaigns.

SAUCEY

Campaign

LOGITECH

Campaign

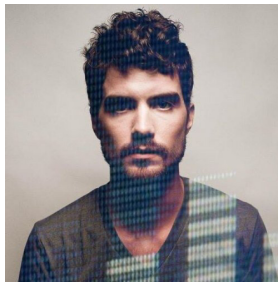
HEAD & SHOULDERS

Campaign

VOGUE

"Glitter & Gold"

BERT SELEN



Bert Jacobus Martinus Selen is a Multi Award-winning TV/Film composer, Music-Producer, Multi-Instrumentalist and Songwriter from the Netherlands based in Los Angeles.

Selen's strengths are in his "pop-production" approach to TV & Film scoring, delivering scores that are sonically impactful through the use of production techniques typically used in modern hit-songwriting.

His scoring work includes the primetime Internationally Syndicated TV show "Rules of Engagement", (Sony/CBS/Happy Madison), Limited Series "Fast Layne" (Disney Channel/Lakeshore Productions), "Raven's Home" (Disney Channel), "K.C. Undercover" (Disney Channel), "Lab Rats" (Disney XD), "Lab Rats: Elite Force" (Disney XD), "Mystery Girls" (ABC Family) "Power Rangers - Dino Fury" (Nickelodeon/Netflix/Hasbro) and "Power Rangers - Cosmic Fury" (Netflix/Hasbro).

Selen is a 5-time BMI TV & Film Award winner for his work on several Top Grossing Primetime, Cable and Streaming shows in the U.S.

His music has been featured in a variety of TV shows, including: "Parks and Recreation" (NBC), "NCIS Los Angeles" (CBS), "The Mentalist" (CBS), "Gossip Girl" (CW), "Awkward" (MTV), "Finding Carter" (MTV), Trailers: "Danny Collins" (Al Pacino), Advertising: "American Music Awards" (E! Network), Verizon, Vogue, Logitech, Head & Shoulders, as well as in Video Games "WET" (Artificial Mind and Movement/Bethesda Softworks) and Stage productions "The Pee-Wee Herman show on Broadway" (HBO), "Pee-Wee Herman live at the Nokia Theatre.

