

TRCW-519FRC1 Waveguide-Coax Adapter, WR-51, Special Flange

Features:

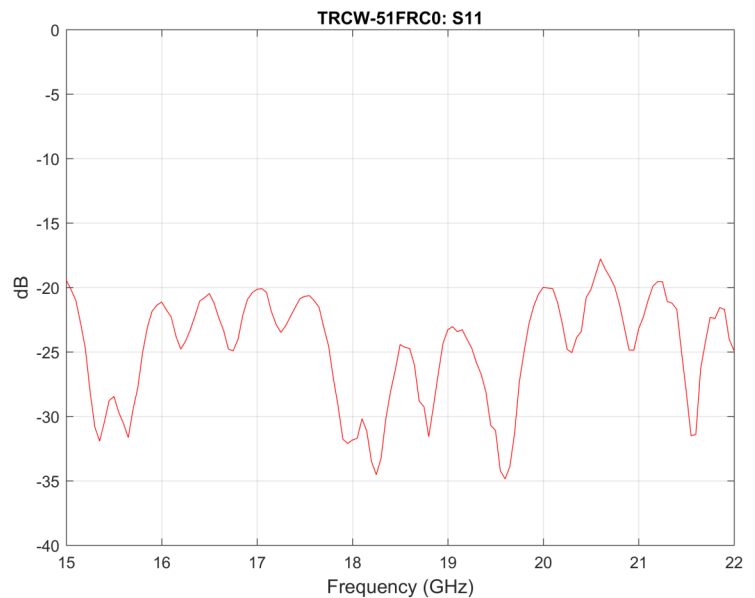
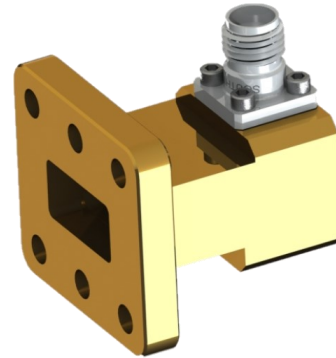
- Low Insertion Loss and Return Loss
- Broadband Coverage
- Center Pin DC Open

Electrical Specifications:

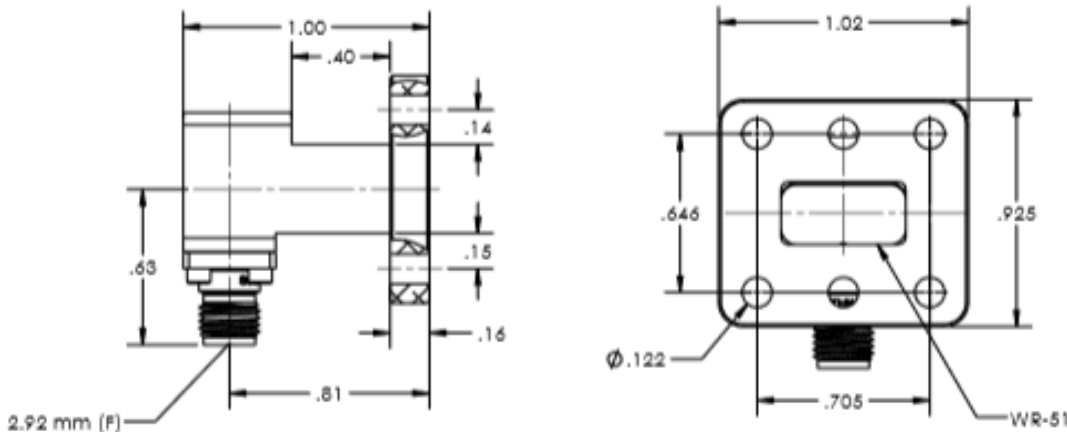
- Frequency: 15.0 – 22.0 GHz
- Insertion Loss: 0.2 dB
- VSWR: 1.25:1

Mechanical Specifications:

- Waveguide: WR-51
- Waveguide Flange: See Outline Drawing
- Coax: 2.92 mm
- Size: 1.02" (W) x .93" (H) x 1.02" (Length)
- Material: Aluminum
- Finish: Hard Gold



Outline: TRCW025-OL00



Note: Raytech Inc. reserves the right to change the information presented without notice.