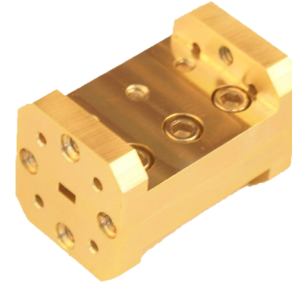


FIST-E001D00 BANDSTOP FITLER, WR-6, 140 GHz

Features:

- Low Cost
- High Rejection
- High Power Handling

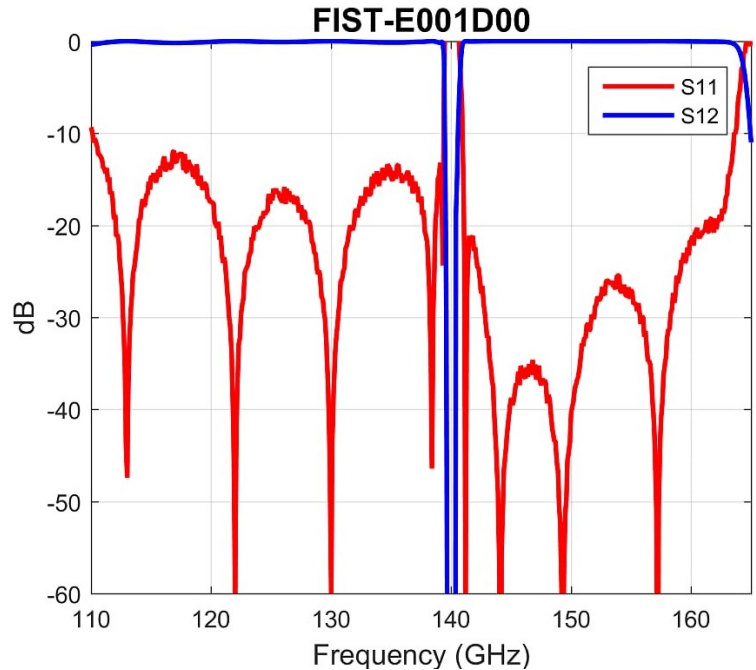


Electrical Specifications:

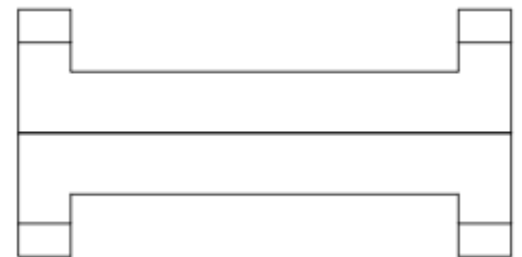
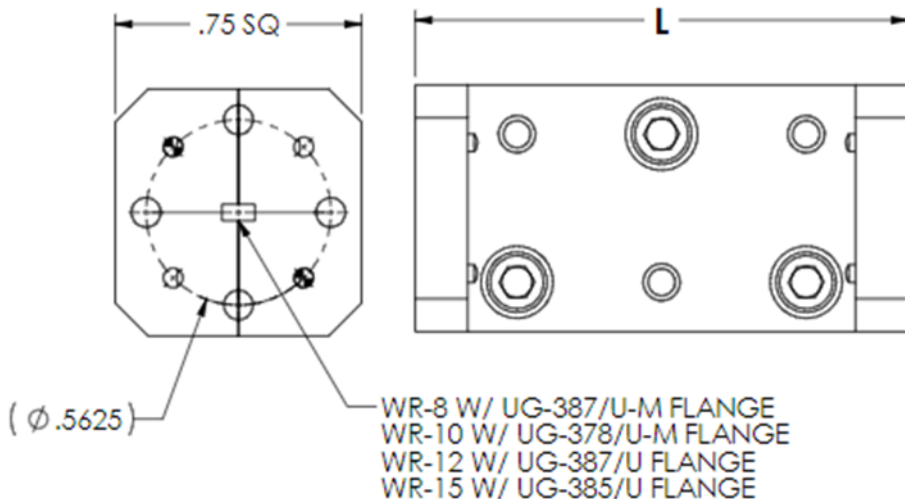
- Passband Frequency: 110 - 165 GHz
- Passband Insertion Loss: 2 dB
- Passband Return Loss: 15 dB
- Bandstop (40 dB): 140 GHz

Mechanical Specifications:

- Port: WR-6, UG-387/UM
- Size: 1.00" (L) X 0.75" (W) X 0.75" (W)
- Material: Aluminum
- Finish: Chromate



Outline: FIBL001-OL00-001 Rev A



| DASH | L (inch) |
|------|----------|
| -001 | 1.00 |
| -002 | 1.25 |
| -003 | 1.50 |
| -004 | 1.75 |
| -005 | 2.00 |

Note: Raytech Inc. reserves the right to change the information presented without notice.