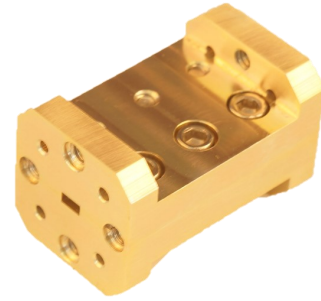


FIBP-7405E2B0 BANDPASS FITLER, WR-12, 71 - 76 GHz



Features:

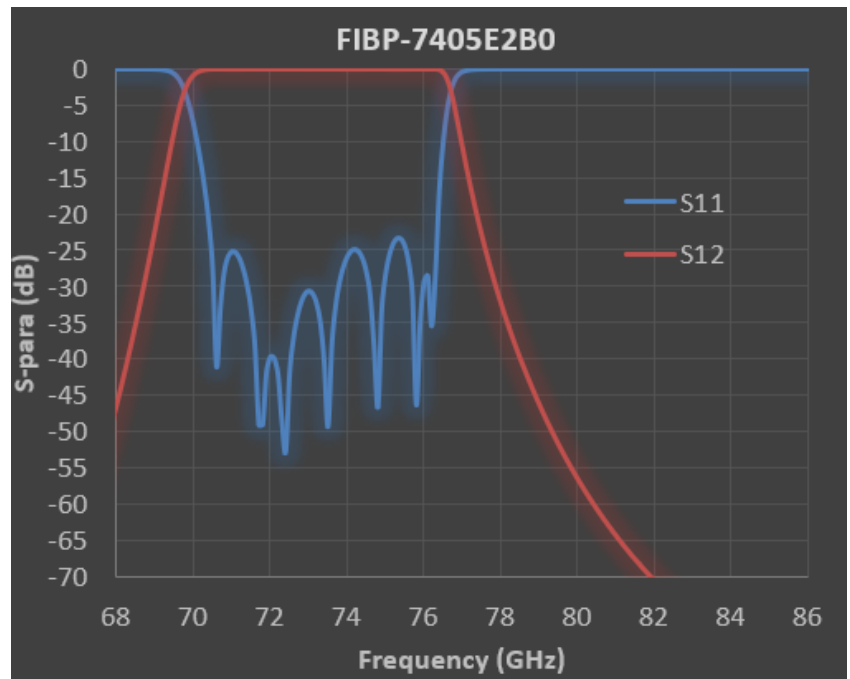
- 2 Weeks Lead Time
- Low Cost
- High Rejection
- High Power Handling

Electrical Specifications:

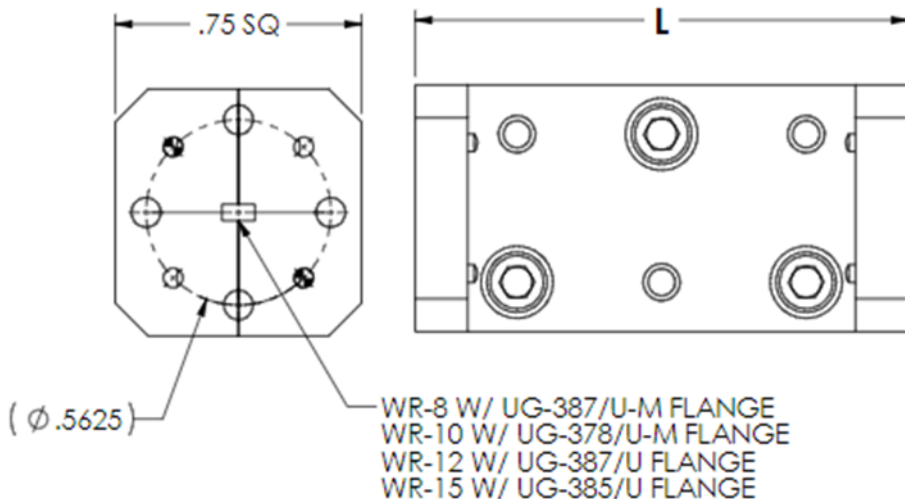
- Passband Frequency: 71.0 - 76.0 GHz
- VSWR: 1.5:1
- Insertion Loss: 1.0 dB
- Rejection: 60 dB min at 81—86 GHz

Mechanical Specifications:

- Port: WR-12, UG-387/U
- Size: 1.25" (L) X 0.75" (W) X 0.75" (W)
- Material: Aluminum
- Finish: Chromate



Outline: FIBL001-OL00-002



DASH	L (inch)
-001	1.00
-002	1.25
-003	1.50
-004	1.75
-005	2.00

Note: Raytech Inc. reserves the right to change the information presented without notice.